

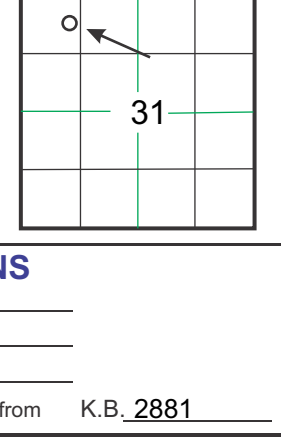
GEOLOGICAL REPORT

Larry A. Nicholson

NAD 83
38.97133524
-100.6969751

COMPANY & WELL Murfin Drilling - Abell Ranch 'B' #2-31
LOCATION 660 FNL 1169 FWL SE NE NW NW
SEC 31 TWP 12S RGE 30W
COUNTY Gove STATE KS

COMPANY Murfin Drilling Company, Inc.
API # 15-063-22238 FIELD Gaeland West
LEASE Abell Ranch 'B' WELL # #2-31
LOCATION SE NE NW NW
SURVEY 660 FNL 1169 FWL
SECTION 31 TWP 12S RGE 30W
COUNTY Gove STATE Kansas



CONTRACTOR Murfin Drilling Company, Inc. Rig # 21
SPUD 9:00 pm 12-12-14 COMP. _____
RTD 4:594 LTD 4:597
MUD UP AT 3300'
MUD TYPE Chemical Morgan Mud

ELEVATIONS
K.B. 2881
D.F. _____
G.L. 2870
All measurements from K.B. 2881

ELECTRICAL SURVEYS				ELEVATIONS			
SAMPLES SAVED	FROM 3600	TO	RTD	Conductor	of	_____	_____
DRILLING TIME	FROM 3600	TO	RTD	Surface	223	of	8:58 23#
SAMPLES EXAMINED	FROM 3600	TO	RTD	Production	_____	of	_____
GEOLOGICAL SUPERVISION	FROM 3600	TO	RTD				
WELL SITE GEOLOGIST	LARRY A. NICHOLSON						

FORMATION TOPS & STRUCTURAL POSITION

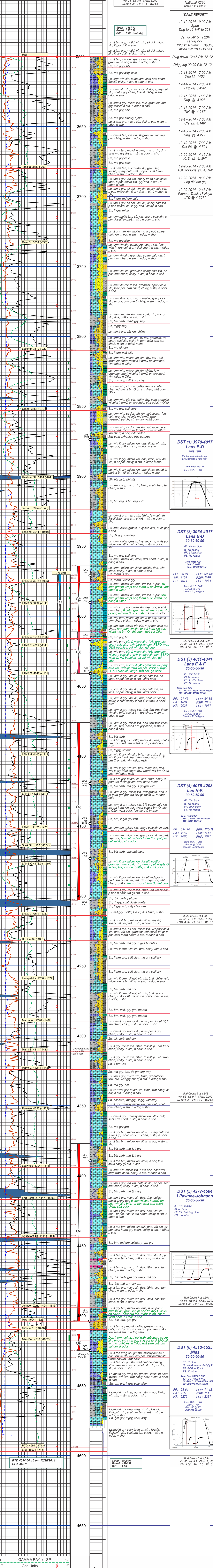
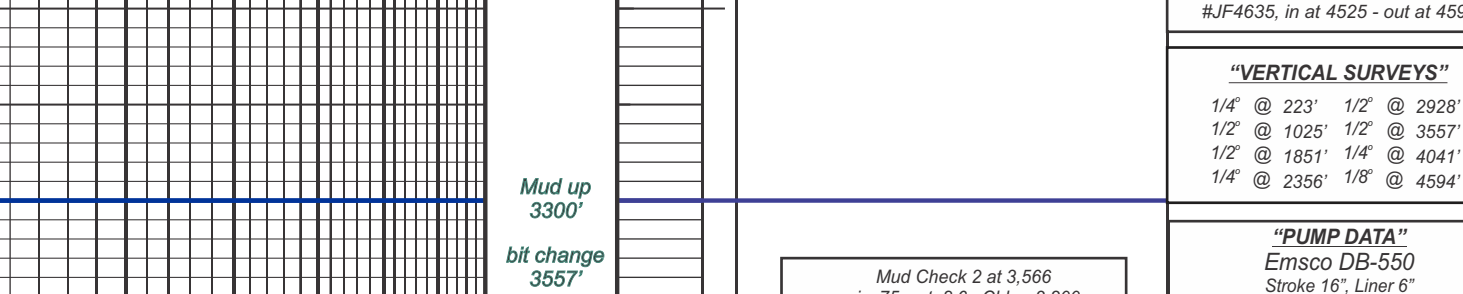
FORMATION	SAMPLE TOPS	SUBSEA DATUM	ELEC LOG TOPS		SUBSEA DATUM		REFERENCE WELL	
			_____	_____	_____	_____	A	B
Anhydrite	2363	+518	2370	+511	2395	+512	-1	
Bi/Anhydrite	2393	+488	2396	+485	2421	+486	-1	
Topeka	3682	-801	3680	-799	3703	-796	-3	
Heebner Sh	3902	-1021	3902	-1021	3923	-1016	-5	
Lansing	3943	-1062	3941	-1060	3964	-1057	-3	
Stark Sh	4165	-1284	4165	-1284	4188	-1281	+3	
Pawnee	4363	-1482	4353	-1472	4386	-1479	-7	
Fort Scott Ls	4421	-1540	4417	-1536	4444	-1537	+1	
Johnson Zone	4493	-1642	4494	-1613	4514	-1607	-6	
Miss	4508	-1627	4510	-1629	4531	-1624	-5	
Miss Dol	4516	-1635	4518	-1637	4546	-1639	+2	
RTD	4594	-1713	_____	_____	4625	-1718	+5	
LTD	_____	_____	4597	-1716	4627	-1720	+4	

REFERENCE WELLS A: Murfin Drilling Abell Ranch 'B' #1-3, 330' FNL 330' FWL, Sec 31 T12S R30W KB 2907'
B: _____

REMARKS & RECOMMENDATIONS:
Based on sample shows and dst results csg was set.
*NOTE: ROP curve is roughly 1' high to elog curves.
Formation tops have been corrected to Log tops

LAN 7/92, Modified 5/05, 1/11, 4/12 Hanover, KS 66845 1inch = 25.4mm 8.5 x 9.7.5 216 mm x 2460 mm

LEGEND



COMPANY Murfin Drilling Company, Inc. ELEVATIONS K.B. 2881
LEASE Abell Ranch 'B' #2-31 SE NE NW NW D.F. _____
LOCATION 660 FNL 1169 FWL SEC. 31 TWP 12S RGE 30W G.L. 2870
COUNTY Gove STATE Ks All measurements from K.B. 2881

