

Janel Staab
Consulting Petroleum Geologist

2428 Toulon Ave
Hays, KS 67601
Phone: 785-625-4311
Cell Phone: 785-635-1660

GEOLOGIST'S WELL REPORT

COMPANY Staab Oil Company #6037

WELL Hoffman Leikam #1

FIELD unknown

LOCATION (legal) 175' FNL + 1535' FWL

Section 26 TWP 12S RGE 17W

(Map) 1/2 mile E + 3 mile W of Catherine KS

COUNTY Ellis STATE Kansas

ELEVATION: 2130' K.B., 2125' G.L.

Depths measured from Kelly Bushing

A. P. I. NUMBER 15-051-26761

GEOLOGY BY Janel Staab

PERTINENT WELL DATA

CONTRACTOR Shields Oil Producer

RIG # 2 HYDRAULICS Bath 225 6X14X60

DRILL PIPE 4 1/2" X - H COLLARS 6 1/4"

CASING: SURFACE 8 5/8" @ 208' W / 150 SX Common

PRODUCTION 5 1/2" @ 3798' W 150 SX Common

DRILLING FLUID: COMPANY Mud-Co / Service Mud, Inc

TYPE: Chemical (Gary Schmidtberger)

REMARKS: Full Service

DRILL STEM TESTS: COMPANY Trilobite Testing Inc

NUMBER OF TESTS Two (2)

ELECTIC LOGS: COMPANY Pioneer Energy Service

DETAIL (5") 3850' - RTD

TYPE D.I. Comp N-D. Micro.S

DRILLING TIME FROM 3020' TO RTD

SAMPLE TIME FROM 3060' TO RTD

SUPERVISION FROM 3110' TO RTD

VERTICAL DEVIATION 3/4" @ 211 0" @ 3800

PLUGGING REPORT 30 SX Rat. 15 SX Mouse

RESERVE PIT _____

DAILY REPORT

DATE: 7 a.m. Depth

RIG ACTIVITY

11-20-14

MIRU, Spud

11-21-14

220'

WOC

11-22-14

1315'

Drilling Anhydrite

11-23-14

2417'

Drilling Shale + Lim

11-24-14

3150'

Drilling Topeka lim

11-25-14

3550'

Drilling KC. TD

11-26-14

3800'

Logging DST #1 +

11-27-14

Set casing

DRILL STEM TESTS

NO	INTERVAL	IFP/TIME	ISF/TIME	FFP/TIME	FSF/TIME	IHP/FHP	RECOVERY
1	Arb. 3652- 3676	414# 673# 5"	1160# 60"	767# 824# 60"	1160# 90"	1862# 1786#	16' S.O.S.m few o. 2148 wcm 378 mw
2	Arb. 3665- 3674	16# 19# 5"	1127# 60"	22# 56# 90"	907# 90"	1883# 1789#	116' c/o 10' HOCm 20' 80
3							
4							
5							
6							
7							
8							

MUD RECORD

CHK	DEPTH	WT	VIS	FIL	CHL	YP
1	2950					
2	3050	8.7	80			
3	3150	8.7	64			
4	3261	8.8	62	7.2	2.1K	35
5	3350	8.9	55			
6	3400	9.0	55			
7	3500	9.0	66			
8	3550	9.1	57			
9	3600	9.3	57			
10	3600	9.4	55			
11						

Displaced
LCM #2
LCM #2
LCM #2

LCM #2
LCM #2
LCM #2

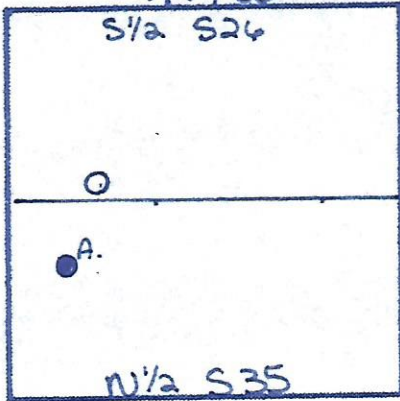
BIT RECORD

NO	SIZE	MAKE	TYPE	DEPTH	FEET	HOURS
1	12 1/4	Reed	milltooth	211	211	6 1/4
2	7 7/8	Reed	S-52	3800	3589	70
3						
4						

FORMATION TOPS & STRUCTURAL GEOL

R17W

S 1/2 S24



REFERRED TO:

- A: Staab Oil Co.
- Leikam #1 SE N
- B: _____
- C: _____
- D: _____
- E: _____

STRATIGRAPHIC MARKERS	SUBJECT WELL		STRUCTURAL POSITIO			
	SAMPLE	E. LOG	DATUM	A	B	C
Anhydrite	1319'	1314'	+816	+812		
Base	1354'	1354'	+776	+775		
Topeka	3099'	3097'	-967	-975		
Heeb. Sh.	3342'	3339'	-1209	-1212		
Toronto	3366'	3363'	-1233	-1241		
Lansing	3391'	3389'	-1259	-1267		
BKC	3623'	3622'	-1492	-1497		
Arbuckle	3660'	3658'	-1528	-1531		
T.O.	3801'	3801'		-1592		

*Structural position of subject well as compared to refer

spcs

oil
mud

T
12
S

6

7

MW 35

The Hoffman Leikam #1 well was drilled by Shields Oil Producers beginning 11-20-14, completed 11-27-14

The drill site was picked via 3-D seismic

The well ran high structurally to the Leikam. Poor oil shows were found in the LKc. The Arbuckle came in high with good show oil

Two DST's were run. The DST#1 was inconclusive test. The bottom packer did. DST#2 was a positive test

Based upon the DST#2, good shows of logs casing was set and cemented. It will be on the Arbuckle

J. Paul Saal

D E

red well.

with
nd

ic. Survey.

Sam #1
cup
WS of

an
at hold.

oil and
cus

REMARKS

LITHOLOGY (LAGGED)

ρ & SHOWS
POOR
FAIR
GOOD
DST

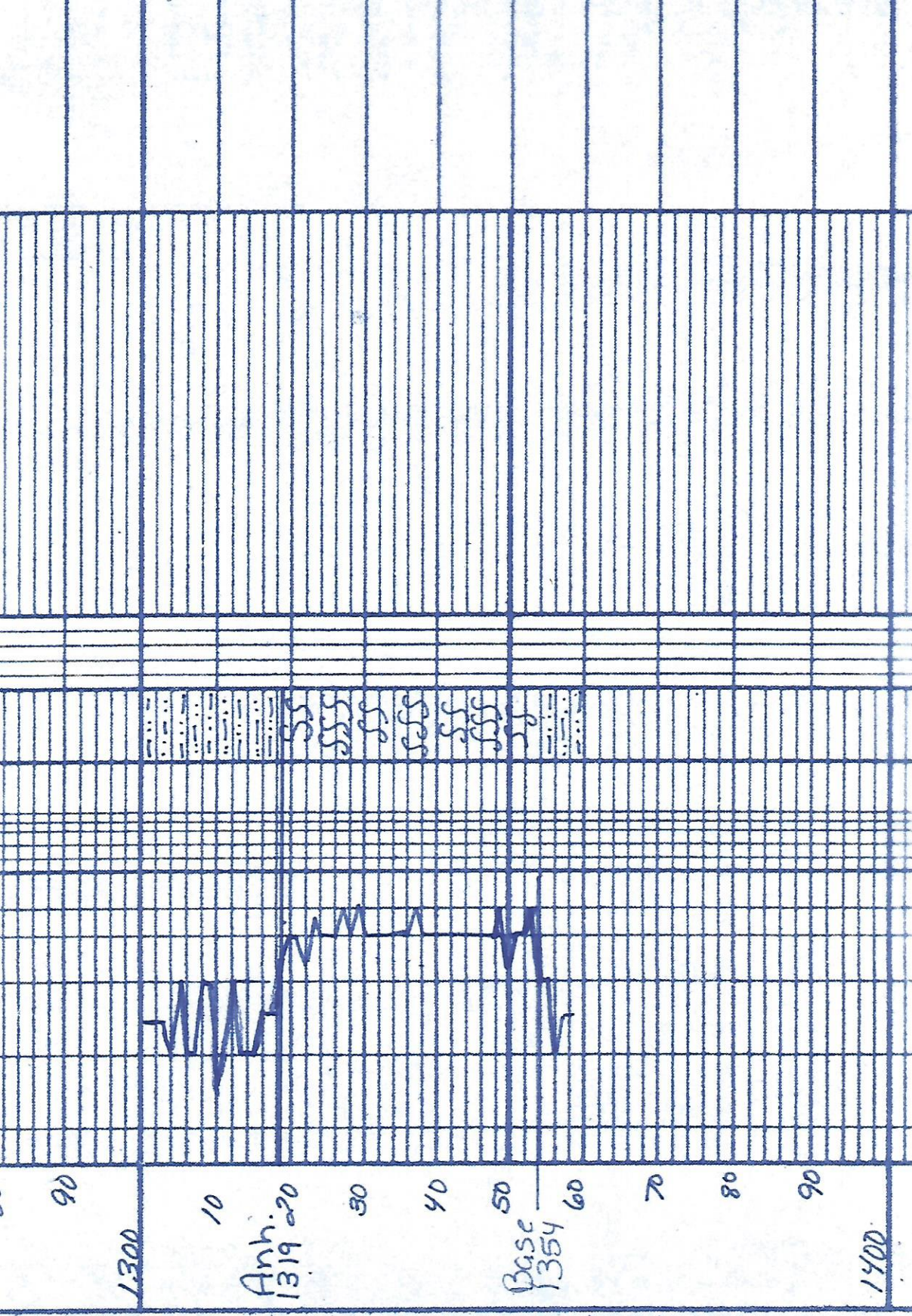
DRILLING TIME (min/ft)
1/2 1 2 3 4 5678910

1250

60

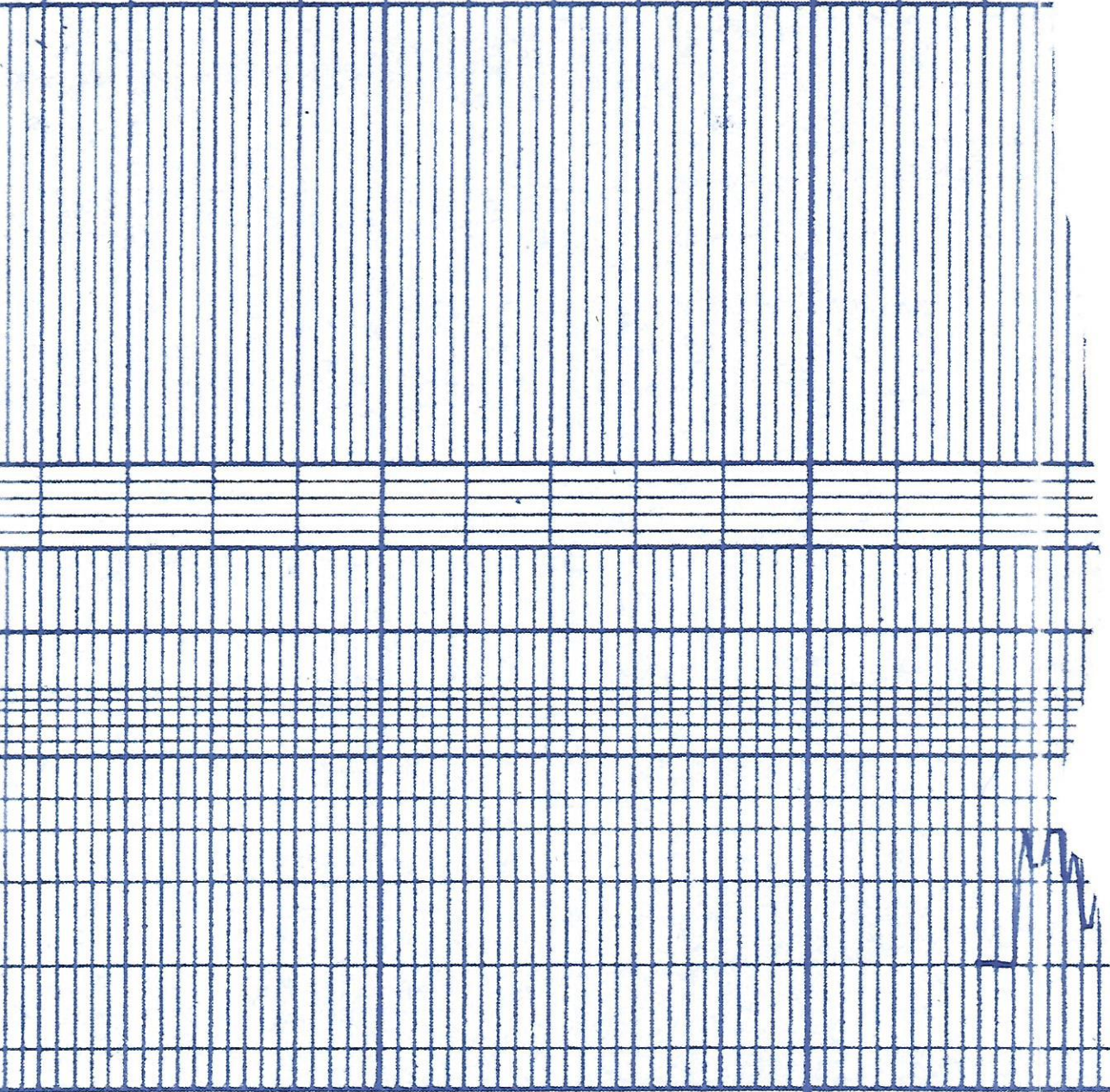
70

80



SS
SS
SS
SS
SS
SS

1300
90
10
Anh.
1319.20
30
40
50
Base
1354
60
70
80
90
1400



3000

10

20

30

Mud
WT 8.7
V15 80
Lem 2

Giro on location
4:45am
11-24-14

mud

sh + sstst - gry brown

LS fan-brn - gry faxta

sh + sstst gry - brn - grn

LS offwh - gry - brn
fynth

LS AIA fossil

LS offwh - gry - brn faxta

sh - drk gry

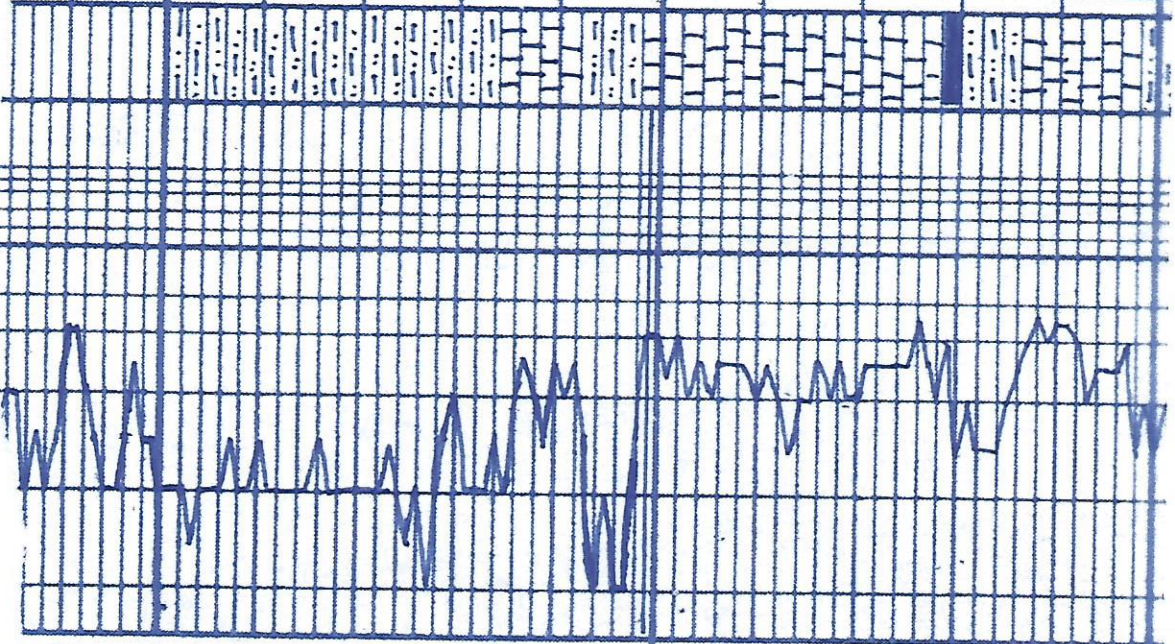
sh + sstst - gry - brn pyrite

LS offwh - gry - brn faxta
fossil

sh + sstst - gry - brn

40 50 60 70 80 90 10 20 30 40 50

Topok 90
3099
3100



WT 8.7
Vis 6.4
Lcm 3

LS tan - grey - brown
fract + impure
slight stain show when cut
no odor
pyrite

LS offwhite - grey - brown
fract. - fossil

A/A

sh. Bk

sh. siltst. grey - brown

LS tan - grey - brown
fract. - cherty

sh. Bk

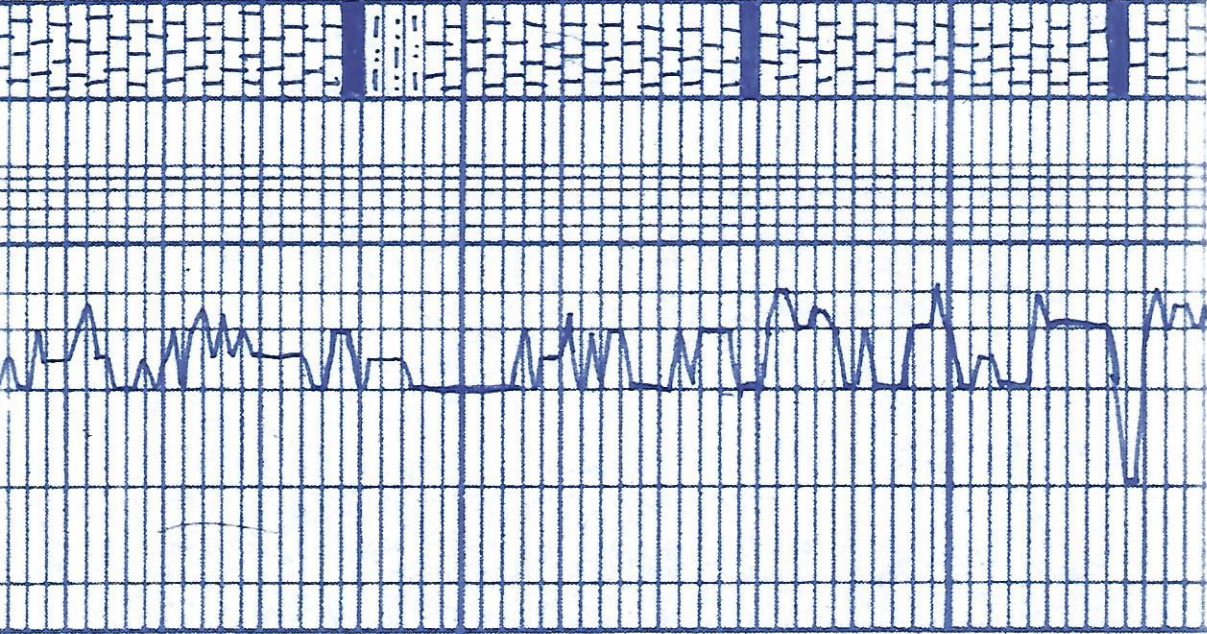
LS offwhite - grey - brown
fract. - cherty

LS A/A w/ pyrite

sh. Bk

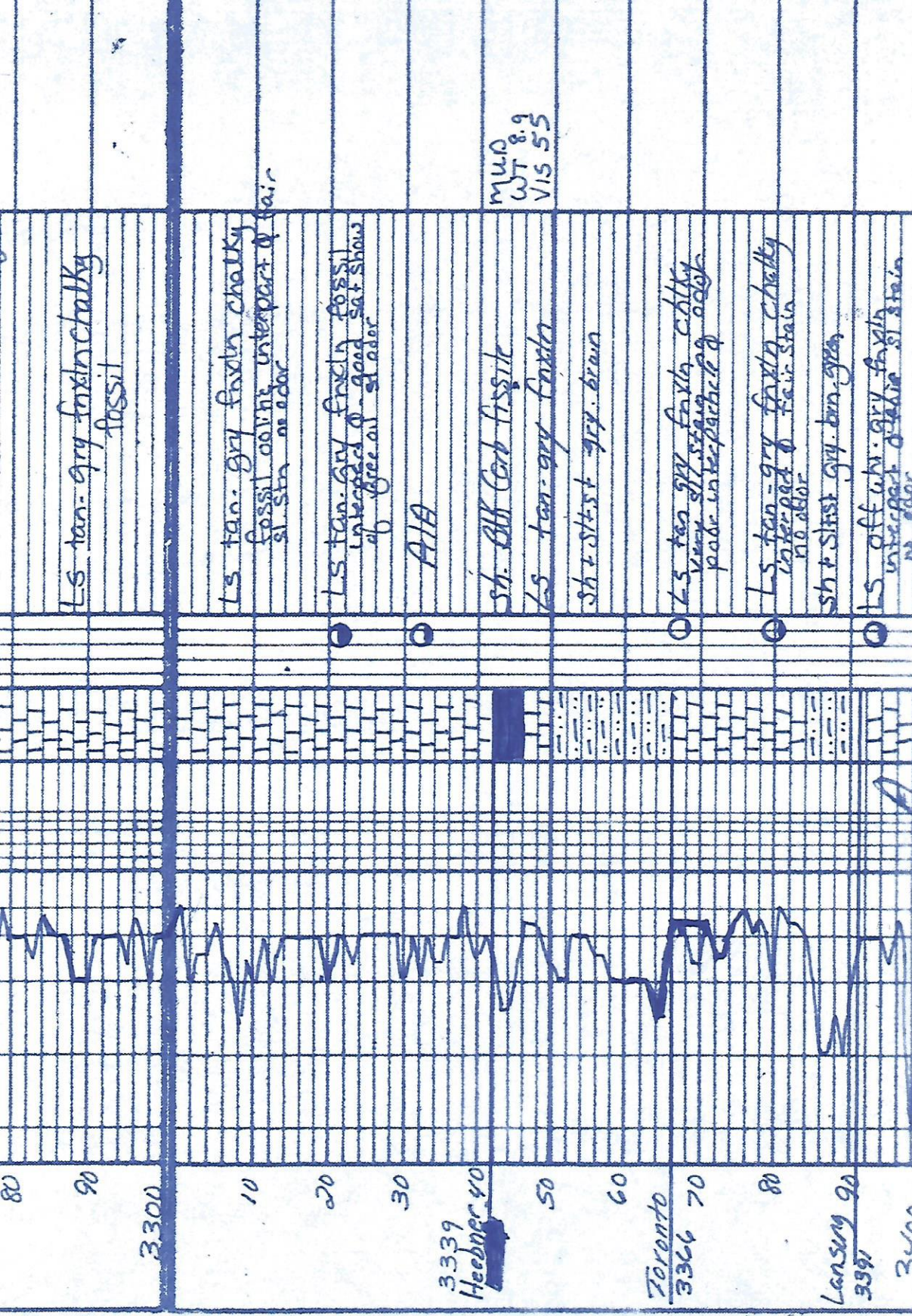
LS tan - brown fract. - cherty

mud
WT 8.8
Vis 6.2
Lcm 2



60 70 80 90 10 20 30 40 50 60 70

3200



MUD
WT 8.9
VIS 55

LS tan-gry finch chalky
fossil

LS tan-gry finch chalky
fossil oolite interpart of fair
sl stain no odor

LS tan-gry finch fossil
interpart of good sat show
of free oil stain

AIA

sh. blk carb fossil

LS tan-gry finch

sh + st + st - gry. brown

LS tan-gry finch chalky
with sil stain no odor

LS tan-gry finch chalky
interpart of fair stain
no odor

sh + st + st - gry. brown

LS off wh. gry. finch
interpart of fair stain
no odor

3300

10

20

30

3339
Heebner 40

50

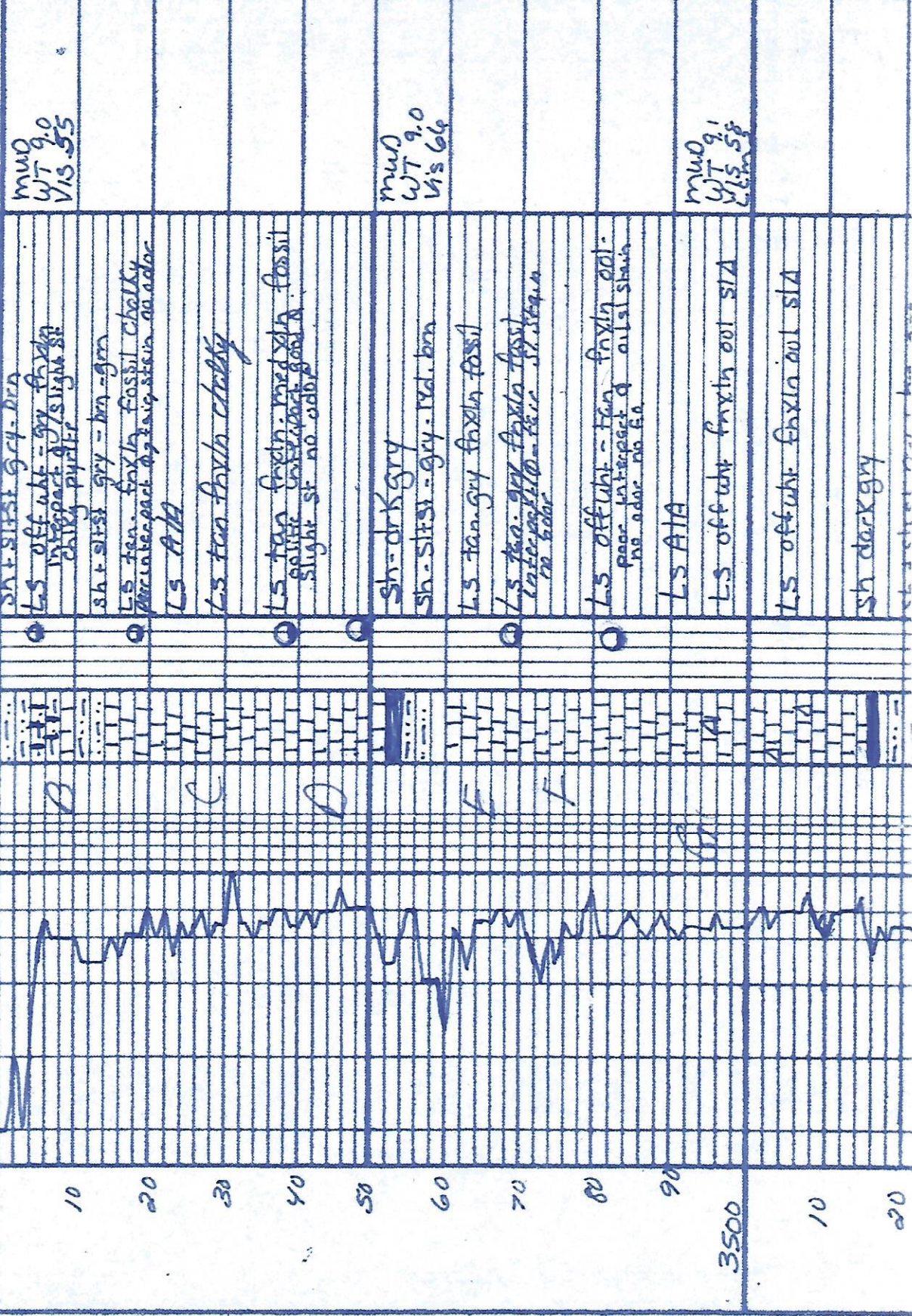
60

Toronto
3366 70

80

Lansing 90
3391

3400



MWD
WT 9.0
Vis 55

MWD
WT 9.0
Vis 66

MWD
WT 9.1
Vis 58

3500

MWD
WT 8.1
VIS 57
LCM 2

LS off wht. - tan gray fossils
fossil sld

Sh + sstst gray brn green
pyrite

LS off wht. - gray w/ fossils
fossil sld

Sh - gray sstst gray + brn

LS off wht. - tan gray fossils
fossil sld

LS off wht. - brn fossils
fossil sld

MWD
WT 9.2
VIS 67
LCM 2

LS off wht. - tan fossils

Sh - off wht. - gray brn green

LS off wht. - tan fossils

Sh + sstst gray brn green

LS - tan - gray fossils

Sh - sstst gray brn green

30

40

50

60

70

80

90

3600

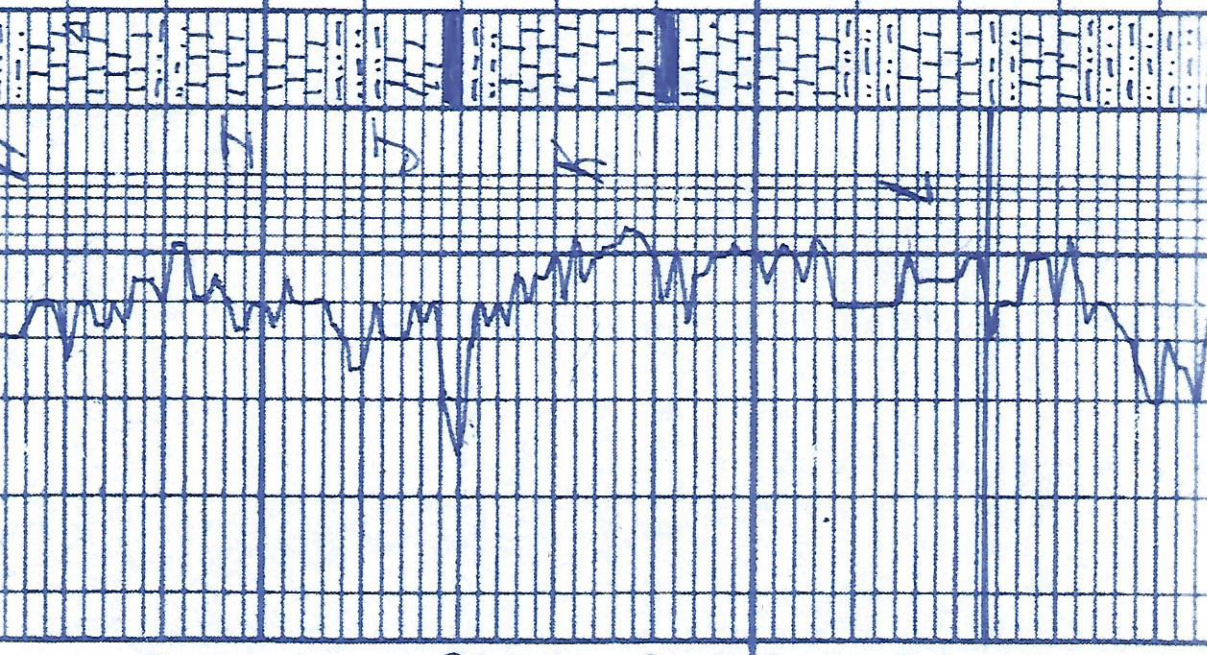
10

20

30

40

BKC
3623



DST #1 Arbuckle
3452.3676
5:40:40:90
failed bottom packer

DST #2 Arbuckle
3465.3674
Spec 116' L10
10' HOCM

LS tan. gy. f. lo. A
fossil interpreted and
sh. silty gray sh. with no odor

Dark tan. fin. med. xlo
w/ good texture. V. grey color
& good saturation

AIA Good odor
Dark
Dark tan. Sur. w/ good
interpart. f.o. Saturated
out show good odor

AIA

Dark Sur. and calcic
good calcic in part of
f.o. Saturated good odor

AIA but less f.o.

Dark Sur. calcic w/
good calcic in part of
good from f.o. Saturated
all show good odor f.o.

AIA

Dark Sur. calcic
f.o. Saturated

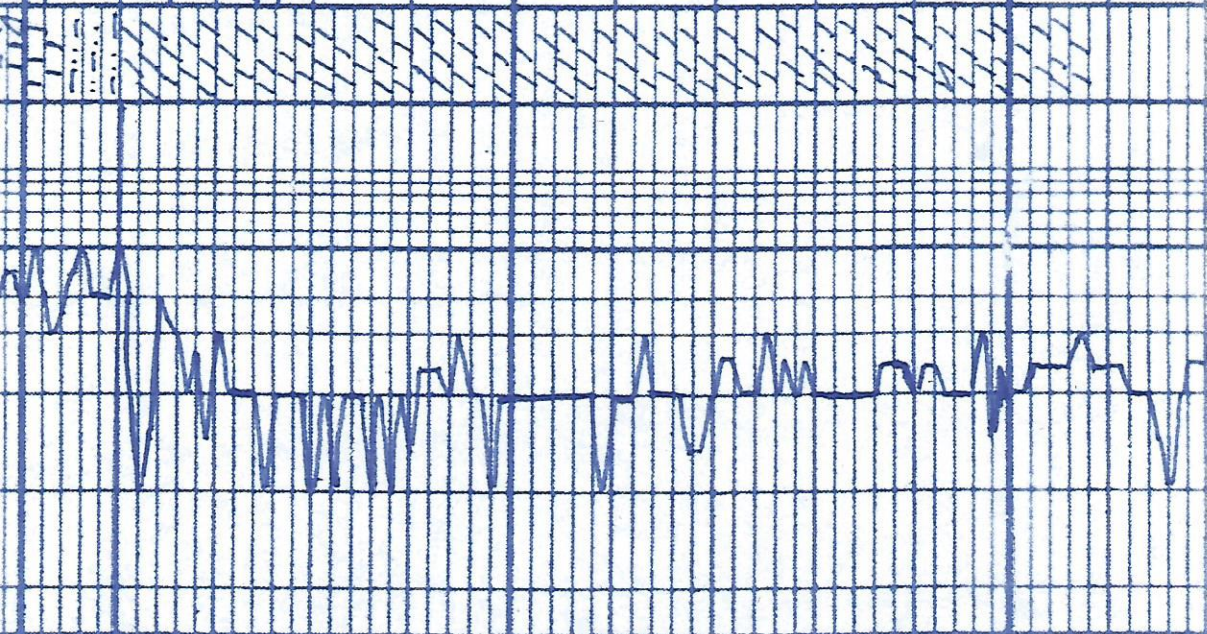
AIA

Dark Sur. calcic
f.o. Saturated

AIA

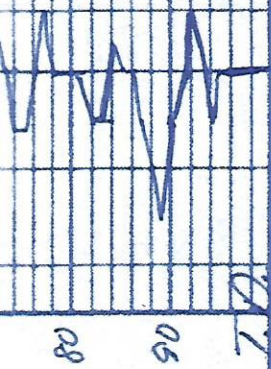
Dark Sur. calcic
f.o. Saturated

AIA



50
3660
Arbuckle
70
3700
10
20
30
40
50
60
70

DO NOT WRITE



80

90

3800 T.D.