

Janel Staab
Consulting Petroleum Geologist

2428 Toulon Ave
Hays, KS 67601
Phone: 785-625-4311
Cell Phone: 785-635-1660

GEOLOGIST'S WELL REPORT

COMPANY Staab Oil Company (6037)
WELL Hagen #1
FIELD Wildcat
LOCATION (legal) NE, SE, SW, SE (460 FSL, 1370 FEL)
Section 18 TWP 12 RGE 19
(Map) Yocemento I-70 - North 6 mile West
COUNTY Ellis STATE Kansas ^{2 miles}
ELEVATION: 2221 K.B., 2216 G.L.

Depths measured from Kelly Bushing

A. P. I. NUMBER 15-051-26771-00-00

GEOLOGY BY Janel Staab

PERTINENT WELL DATA

CONTRACTOR Shields Oil Producers (5184)

RIG #2 HYDRAULICS Beth 225 6X14X55

DRILL PIPE 4 1/2 X-11 COLLARS 6 1/2 311

CASING: SURFACE 8 5/8" @ 219' w/ 150 SC Comm

PRODUCTION 5 1/2 @ 3930' w/ 150 SC common

DRILLING FLUID: COMPANY Mud-Co / Service Mud, Inc

TYPE: Chemical Gary Schmidtberger

REMARKS: Full Service

DRILL STEM TESTS: COMPANY Trilobite Testing Inc

NUMBER OF TESTS 3 Brannon Lonsdale

ELECTIC LOGS: COMPANY Pioneer

DETAIL (5") 3200 - RTD

TYPE DI, Comp N-D, Micro

DRILLING TIME FROM 3000' TO 3930' RTD

SAMPLE TIME FROM 3020' TO 3930' RTD

SUPERVISION FROM 3020' TO 3930' RTD

VERTICAL DEVIATION _____

PLUGGING REPORT _____

RESERVE PIT _____

DRILL STEM TESTS

NO	INTERVAL	IFP/TIME	ISIP/TIME	FFP/TIME	FSIP/TIME	IHP/FHP	RECOVERY
1	LKCC-D 3564- 3609	29# 29# 5'	1024# 60'	33# 33# 30'	924# 30'	1783# 1756#	10' mud
2	3852- 3874 Arb	24# 30# 5'	1217# 60'	33# 68# 60'	1195# 90'	2028# 1990#	90' feet wn
3	3716- 3750 zone K	30# 33# 5'	1296# 60'	33# 22# 30'	994# 30'	1981# 1777#	5' Mufew Spot
4							
5							
6							
7							
8							

MUD RECORD

CHK	DEPTH	WT	VIS	FIL	CHL	YP
1	219					
2	1271	8.8	27	NC	6700	-
3	2226	9.5	28	NC	31000	-
4	2966	8.6	65+	6.0	4500	34
5	3527	9.1	57	6.4	2900	30
6	3609	9.2	52	6.8	3000	27
7	3840	9.2	59	6.4	3000	17
8	3930	9.3	58	7.2	3100	36
9						
10						
11						

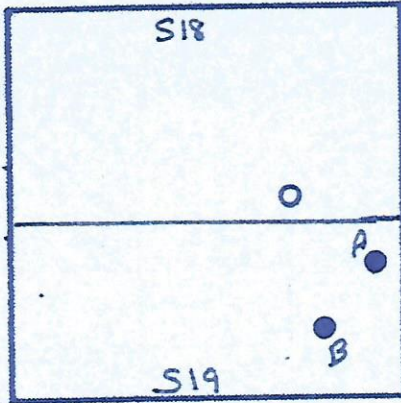
LCM -
LCM -
LCM 3
LCM 2
LCM 2
LCM 6
LCM 6

BIT RECORD

NO	SIZE	MAKE	TYPE	DEPTH	FEET	HOURS
1	1 1/4	Millbrook	Reed	219	219	4 1/2
2	7/8	S.52	Reed	2930		98 3/4
3						
4						

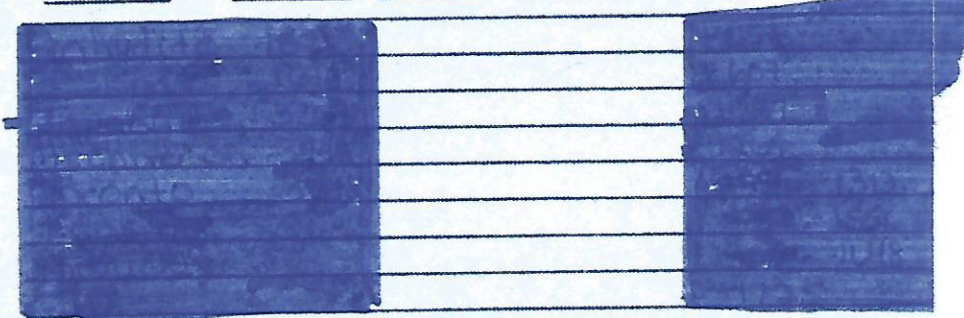
FORMATION TOPS & STRUCTURAL GEO

REFERRED TO:



- A: Vonfeldt #1
- B: Vonfeldt #2
- C: _____
- D: _____
- E: _____

STRATIGRAPHIC MARKERS	SUBJECT WELL		STRUCTURAL POSITION	
	SAMPLE	E. LOG	DATUM	A • • B



A.

Anhydrite	1571	1569	+ 652	+ 651
Base	1619	1617	+ 604	+ 607
Topeka	3263	3259	- 1038	- 1039
Heebner	3495	3490	- 1269	- 1269
Toronto	3518	3515	- 1294	- 1296
Lansing	3535	3534	- 1313	- 1313
BKC	3779	3776	- 1555	- 1556
Arbuckle	3855	3852	- 1631	- 1648
TD	3830	3928	- 1707	- 1725

pipe strap 2' short

*Structural position of subject well as compared to refer

The Hagen #1 was drilled using Shield
 The well ran structurally high to Vanfe
 3 DST's were run, all with negative res
 Even though the Arbuckle came in stru
 high, sample shows were poor. Logs
 run

Based upon all data, the well was

Good Seal



B

- (65)
- 606
- 1034
- 1264
- 1287
- 1308
- 1548
- 1628
- 1715

red well.

s #2
d #1
ults
cturally
ore

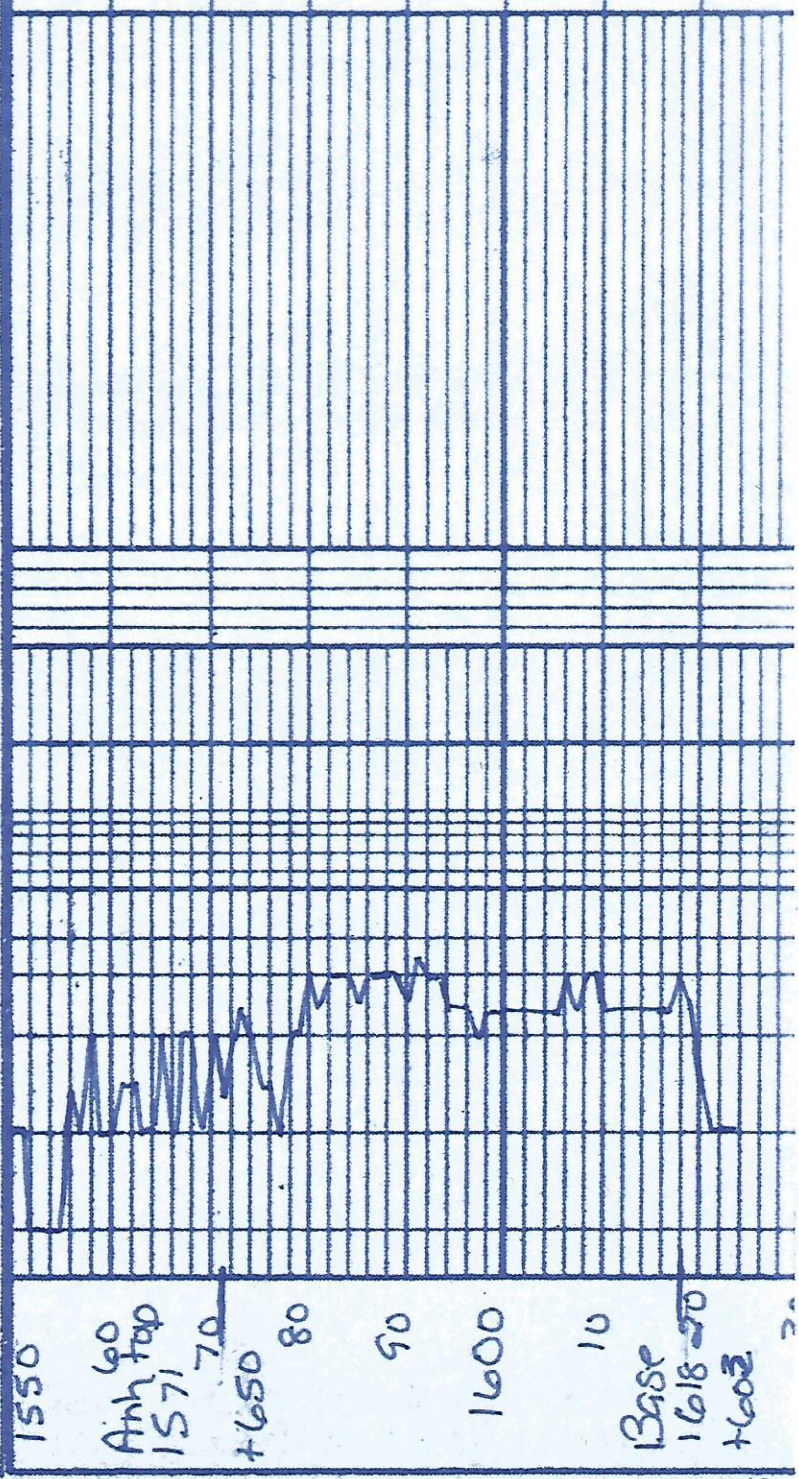
P+A

REMARKS

LITHOLOGY (LAGGED)

φ & SHOWS
POOR
FAIR
GOOD
DST

DRILLING TIME (min/ft)
1/2 1 2 3 4 5678910



MS: A

Geo on location
@ 1:00 p.m

Tankio - no oil show
then out

3000

10

20

30

40

50

60

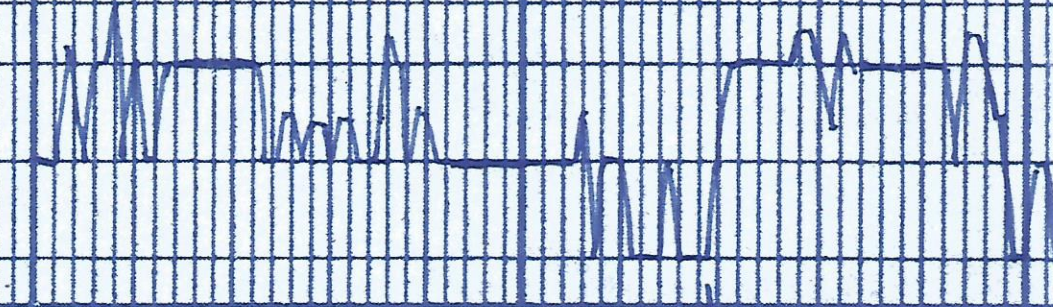
Tankio

306970

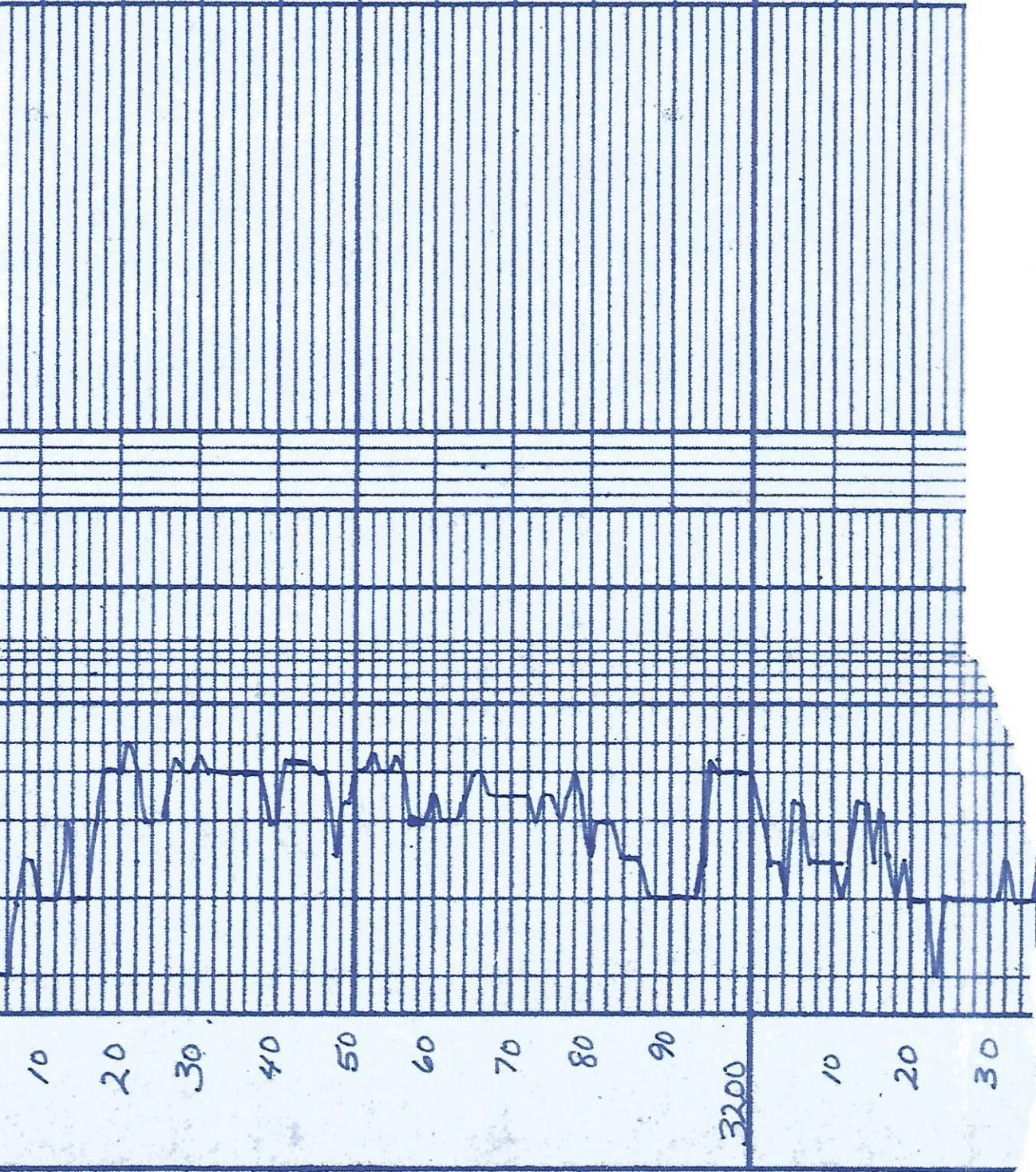
80

90

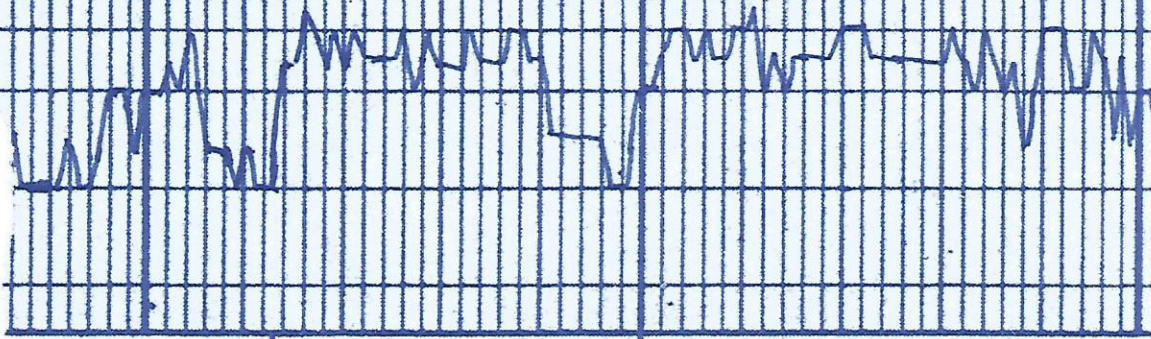
3100



Mud
Vis 65
wt 8.6



40
50
Topek
60
3263
-1042
70
80
90
3300
10
20
30
40
50



Sh + sista - grey. brn. gran
LS top. grey foxlin chily

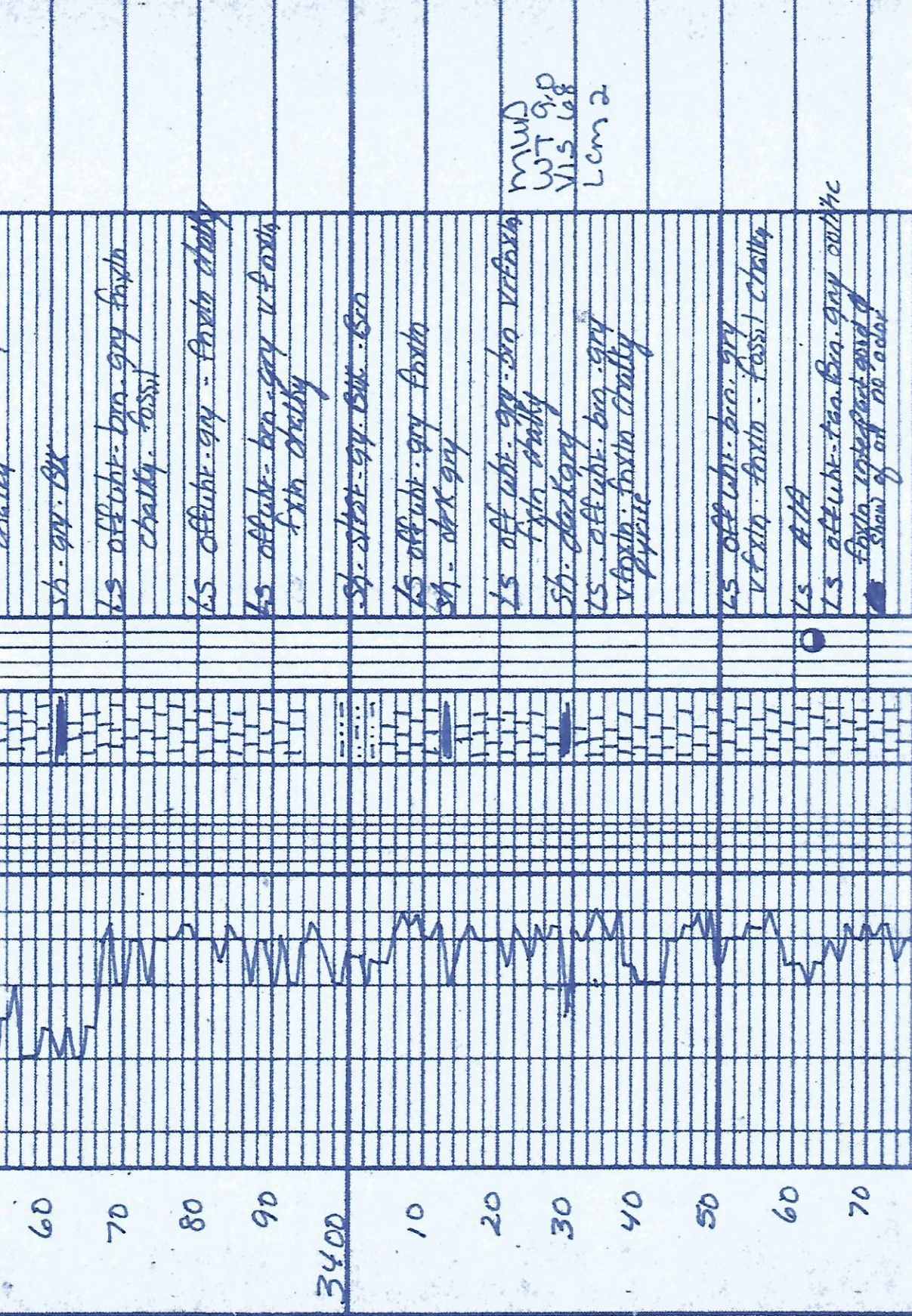
Sh - grey
LS off wh. brn. grey foxlin

LS off wh. brn. grey V foxlin. foxlin
Sh + sista - grey brn. given red
LS off wh. brn. grey V foxlin. foxlin

ATA

Sh - grey

Mud
wt. 8.8.
vis 69
LCM 2H



mud
WT 9.0
VLS 68
Lcm 2

Sh. - gray - Brk

Ls. off-white - brn. gray fossil cherty. fossil

Ls. off-white - gray - fossil cherty

Ls. off-white - brn. gray v. fossil fish cherty

Sh. - light - gray - Brk - Brn

Ls. off-white - gray - fossil fish - dark gray

Ls. off-white - gray - brn. v. fossil fish cherty

Sh. - dark gray

Ls. - off-white - brn. - gray v. fossil - fossil cherty pyrite

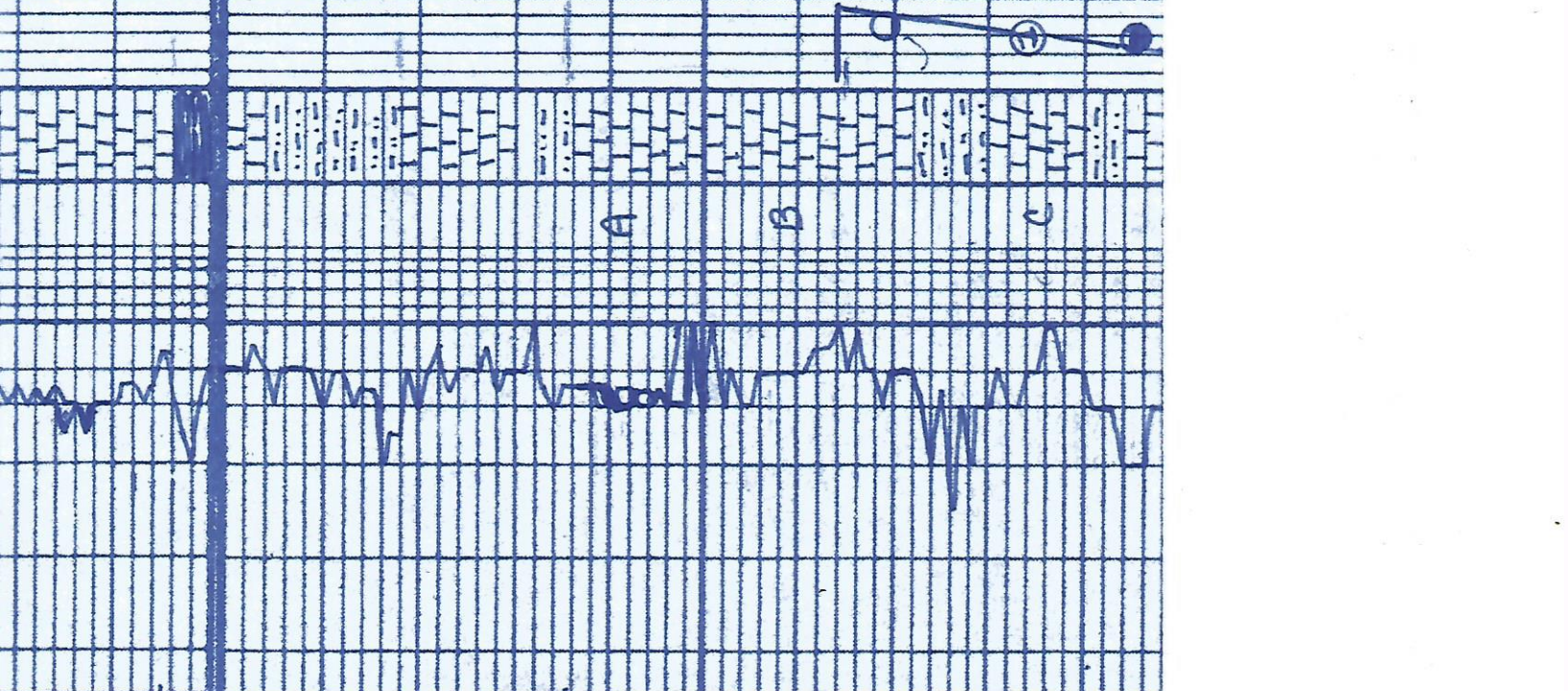
Ls. - off-white - brn. - gray v. fossil - fossil cherty

Ls. - Brk

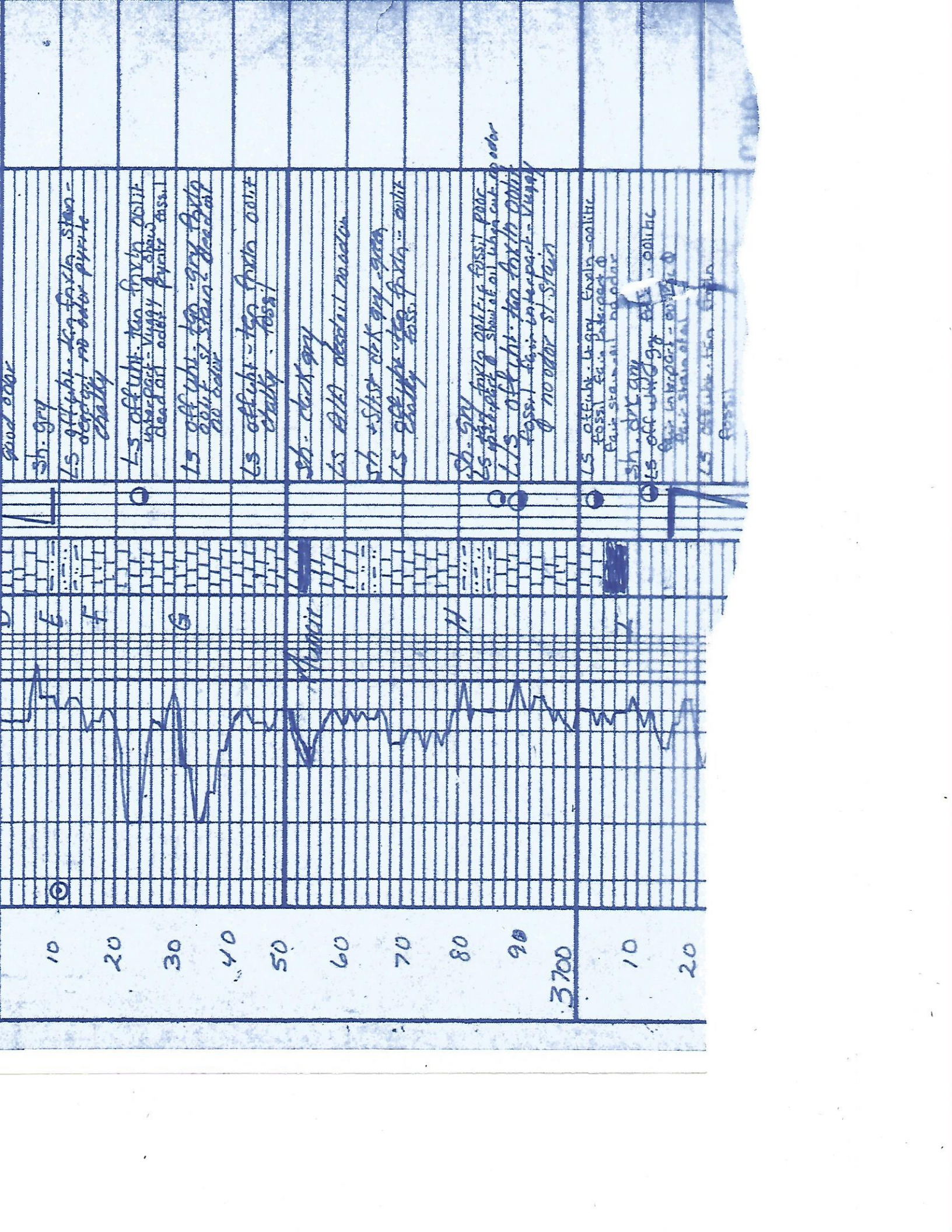
Ls. - off-white - tan - brn. - gray - calc. fossiliferous and show of oil no. oil

WT 90
 VIS 65
 LCM 2.4
 DST #1 Lams
 3564' - 3609' C-0
 S: 60.30.30
 Rec 10' M
 FP: 29.29, 33.33
 SEP 1024.924
 MUD
 WT 9.0
 VIS 65
 LCM 2

LS off-white - om. gray
 calcic forin fossil
 LS off-white - br. gray forin fossil
 sh. blk carb fossil
 LS tan forin
 sh. blk carb fossil
 LS off-white - tan forin fossil
 cherty
 LS off-white - tan forin fossil
 cherty
 LS off-white - tan forin fossil
 cherty
 LS off-white - tan forin fossil
 cherty
 LS off-white - tan forin fossil
 cherty
 LS off-white - tan forin fossil
 cherty
 LS off-white - tan forin fossil
 cherty



80
 Heebner 90
 3495
 -1214
 3500
 10
 Toronto 3518
 -1297 20
 30
 Lansing 3535
 -7314 40
 50
 60
 70
 80
 90
 200



good odor

Sh. grey

L5 off white - tan fossils stain -
deserted no odor - pyrite
chalky

L4 off white - tan fossils stain
interpart - Vuggy & sand
dead oil - odder
pyrite mss. 1

L3 off white - tan - grey fossils
good oil - stain - dead oil
no odor

L2 off white - tan fossils stain
chalky - fossil

Sh. dark grey

L1 AKA desert. no odor

Sh. + Silt. dark grey - green

L0 off white - tan fossils - stain
chalky - fossil

Sh. grey

L5 off white - tan fossils stain -
interpart & show of oil when cut - no odor

L4 off white - tan fossils stain
fossil - thin - interpart - Vuggy
& no odor / stain

L3 off white - tan fossils - stain
fossil - thin - interpart &
fair stain - all no odor

Sh. grey
L2 off white - tan fossils - stain
interpart - Vuggy

L1 off white - tan fossils - stain
interpart - Vuggy

L0 off white - tan fossils - stain

10

20

30

40

50

60

70

80

90

3700

10

20

50
Arbuckle
3855
-163460

70

80

90

3900

10

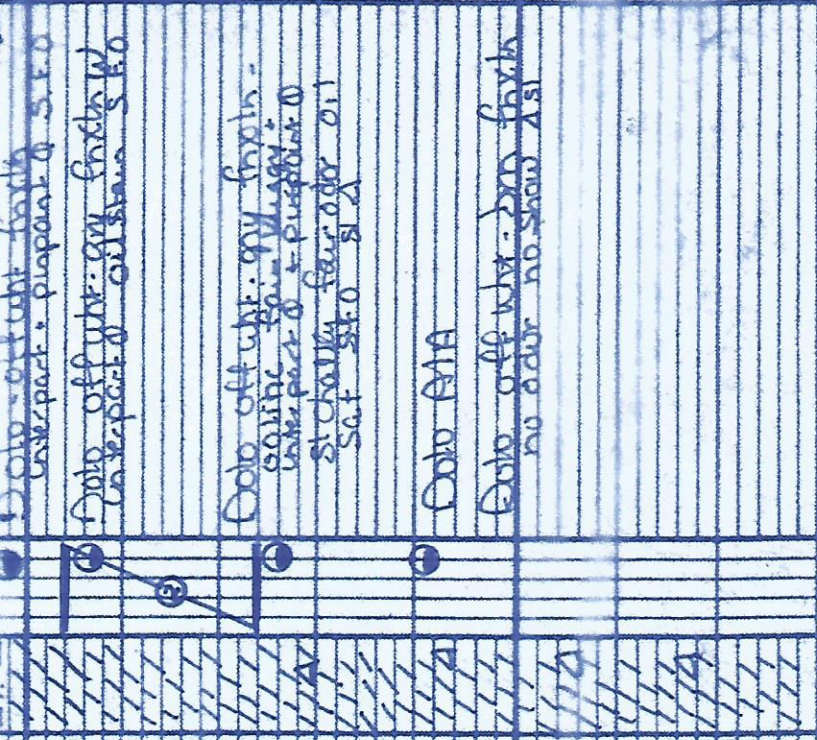
20

30
T.O

40

50

TD 11:00 AM 2 BEATS



0 Data off wht. - grey finch
under part - purport of S.F.O

40 Data off wht. - grey finch W
under part - O OIL STAIN S.F.O

80 Data off wht. - grey finch -
positive - rain - W. 1997 +
under part - O - purport of O
S. CHAUNY fear odor O.I.
S.F. S.F.O S.A

120 Data AIA

160 Data off wht. - grey finch
no odor no stain A.S.

DST #2
38563874
5-60-60.90
REC 90 WIM
EP 24.30 33.68
SIP 1217-1195