



DIAMOND TESTING
 P.O. Box 157
HOISINGTON, KANSAS 67544
 (800) 542-7313
DRILL-STEM TEST TICKET
 FILE: bhfarm2-20dst3

TIME ON: 2-17 21:35
 TIME OFF: 2-18 06:11

Company LD Drilling Inc Lease & Well No. B-H Farms #2-20
 Contractor Petromark Rig #2 Charge to LD Drilling Inc
 Elevation 1863 KB Formation _____ Arbuckle Effective Pay _____ Ft. Ticket No. S0542
 Date 2-17-15 Sec. 20 Twp. _____ 21 S Range _____ 12 W County _____ Stafford State KANSAS
 Test Approved By Kurt Talbot Diamond Representative _____ Jacob McCallie

Formation Test No. 3 Interval Tested from 3467 ft. to 3567 ft. Total Depth 3567 ft.

Packer Depth 3462 ft. Size 6 3/4 in. Packer depth _____ ft. Size 6 3/4 in.

Packer Depth 3467 ft. Size 6 3/4 in. Packer depth _____ ft. Size 6 3/4 in.

Depth of Selective Zone Set _____

Top Recorder Depth (Inside) 3455 ft. Recorder Number _____ Cap. 5,000 P.S.I.

Bottom Recorder Depth (Outside) 3534 ft. Recorder Number _____ Cap. 5,000 P.S.I.

Below Straddle Recorder Depth _____ ft. Recorder Number _____ Cap. _____ P.S.I.

Mud Type Chem Viscosity 47 Drill Collar Length 123 ft. I.D. 2 1/4 in.

Weight 9.35 Water Loss 11.2 cc. Weight Pipe Length 0 ft. I.D. 2 7/8 in

Chlorides 8,200 P.P.M. Drill Pipe Length 3318 ft. I.D. 3 1/2 in

Jars: Make STERLING Serial Number NA Test Tool Length 26 ft. Tool Size 3 1/2-IF in

Did Well Flow? NO Reversed Out NO Anchor Length 100 (37A) ft. Size 4 1/2-FH in

Main Hole Size 7 7/8 Tool Joint Size 4 1/2 XH in. Surface Choke Size 1 in. Bottom Choke Size 5/8 in

Blow: 1st Open: 2" Blow- Built to BB in 4 1/2 min **BBBB**

2nd Open: 1 1/2" Blow- Built to BB in 4 min **BBBB**

Recovered 1702 ft. of GIP

Recovered 286 ft. of CO 100% O Gravity: 41 @ 60 degrees F

Recovered 406 ft. of HMCHGCO 32% G 38% O 30% M

Recovered 692 ft. of TOTAL FLUID

Recovered _____ ft. of _____ Price Job

Recovered _____ ft. of _____ Other Charges

Remarks: _____ Insurance

Diesel in bucket

Tool Sample: 42% O 58% M Total

Time Set Packer(s) 2-17 11:32 PM ^{A.M.}/_{P.M.} Time Started Off Bottom 2-18 2:32 AM ^{A.M.}/_{P.M.} Maximum Temperature 101

Initial Hydrostatic Pressure..... (A) 1669 P.S.I.

Initial Flow Period..... Minutes 30 (B) 28 P.S.I. to (C) 161 P.S.I.

Initial Closed In Period..... Minutes 45 (D) 840 P.S.I.

Final Flow Period..... Minutes 45 (E) 174 P.S.I. to (F) 275 P.S.I.

Final Closed In Period..... Minutes 60 (G) 809 P.S.I.

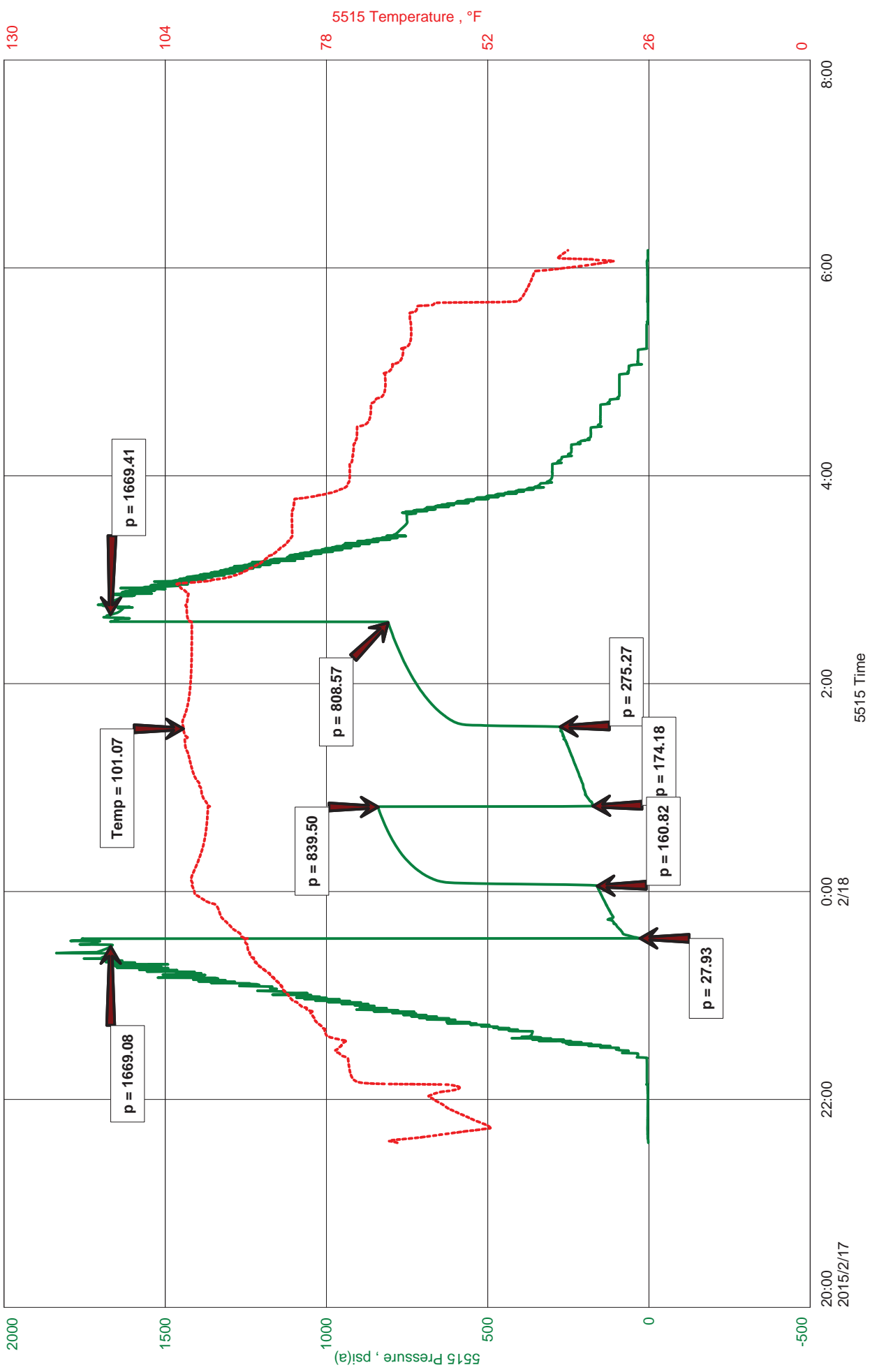
Final Hydrostatic Pressure..... (H) 1669 P.S.I.

Diamond Testing shall not be liable for damages of any kind to the property or personnel of the one for whom a test is made or for any loss suffered or sustained, directly or indirectly, through the use of its equipment, or its statement or opinion concerning the result of any test. Tools lost or damaged in the hole shall be paid for at cost by the party for whom the test is made.

LD Drilling Inc.
DST #3 Arbuckle 3467-3567'
Start Test Date: 2015/02/17
Final Test Date: 2015/02/18

B-H Farms #2-20
Formation: DST #3 Arbuckle 3467-3567'
Pool: Infield
Job Number: S0542

B-H Farms #2-20





Hoisington, Kansas

JACOB MCCALLIE
620-617-7116
mccallie.dtlc@gmail.com

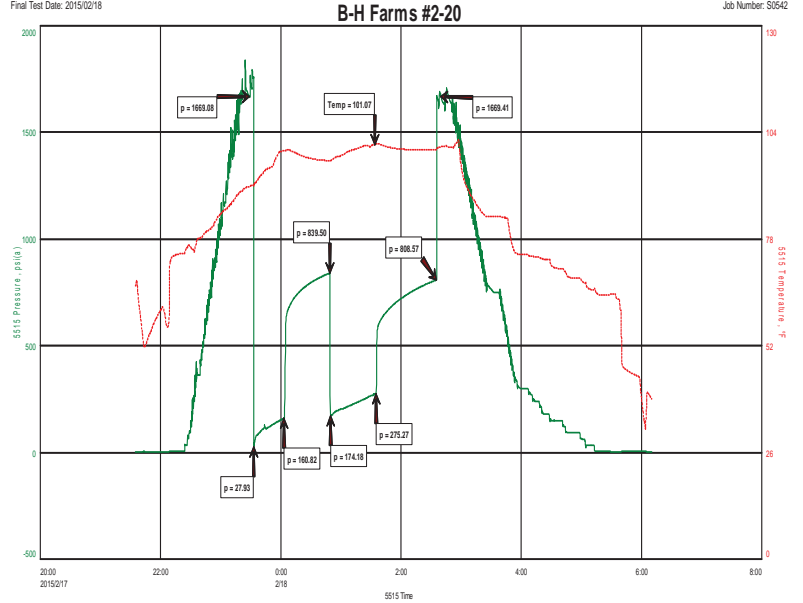
General Information

Company Name LD Drilling Inc.

Contact	LD Davis
Well Name	B-H Farms #2-20
Unique Well ID	DST #3 Arbuckle 3467-3567'
Surface Location	SEC 20-21S-12W Stafford County
Field	Mueller
Well Operator	LD Drilling Inc.
Test Type	Drill Stem Test
Well Type	Vertical
Formation	DST #3 Arbuckle 3467-3567'
Well Fluid Type	01 Oil
Test Purpose (AEUB)	Initial Test
Start Test Date	2015/02/17
Start Test Time	21:35:00
Final Test Date	2015/02/18
Final Test Time	06:11:00
Job Number	S0542
Representative	Jacob McCallie
Prepared By	Jacob McCallie
Report Date	2015/02/17

LD Drilling Inc.
 DST #3 Arbuckle 3467-3567'
 Start Test Date: 2015/02/17
 Final Test Date: 2015/02/18

B-H Farms #2-20
 Formation: DST #3 Arbuckle 3467-3567'
 Post: Initial
 Job Number: S0542



FLUID RECOVERY

1702'	GIP		
286'	CO	100% O	GRAVITY: 41 @ 60 degrees F
406'	HMCHGCO	32% G 38% O 30% M	
692'	TOTAL FLUID		

TOOL SAMPLE:
 42% O 58% M