



DIAMOND TESTING
 P.O. Box 157
HOISINGTON, KANSAS 67544
 (800) 542-7313
DRILL-STEM TEST TICKET
 FILE: ernsting1-1dst3

TIME ON: 16:55
 TIME OFF: 21:54

Company LD Drilling Inc Lease & Well No. Ernsting #1-1
 Contractor Petromark Rig #2 Charge to LD Drilling Inc
 Elevation 1792 KB Formation Arbuckle Effective Pay _____ Ft. Ticket No. S0545
 Date 2-26-15 Sec. 1 Twp. 20 S Range 12 W County Barton State KANSAS
 Test Approved By Kurt Talbot Diamond Representative Jacob McCallie

Formation Test No. 3 Interval Tested from 3316 ft. to 3341 ft. Total Depth 3341 ft.
 Packer Depth 3311 ft. Size 6 3/4 in. Packer depth -- ft. Size 6 3/4 in.
 Packer Depth 3316 ft. Size 6 3/4 in. Packer depth -- ft. Size 6 3/4 in.

Depth of Selective Zone Set _____

Top Recorder Depth (Inside) 3304 ft. Recorder Number 5515 Cap. 5,000 P.S.I.
 Bottom Recorder Depth (Outside) 3319 ft. Recorder Number 5586 Cap. 5,000 P.S.I.
 Below Straddle Recorder Depth _____ ft. Recorder Number _____ Cap. _____ P.S.I.

Mud Type Chem Viscosity 64 Drill Collar Length 123 ft. I.D. 2 1/4 in.
 Weight 9.5 Water Loss 9.2 cc. Weight Pipe Length 0 ft. I.D. 2 7/8 in.
 Chlorides 10,500 P.P.M. Drill Pipe Length 3167 ft. I.D. 3 1/2 in.
 Jars: Make STERLING Serial Number NA Test Tool Length 26 ft. Tool Size 3 1/2-IF in.
 Did Well Flow? NO Reversed Out NO Anchor Length 25 ft. Size 4 1/2-FH in.
 Main Hole Size 7 7/8 Tool Joint Size 4 1/2 XH in. Surface Choke Size 1 in. Bottom Choke Size 5/8 in.

Blow: 1st Open: WSB- Built to 1 3/4" in 30 min **NOBB**
 2nd Open: WSB- Built to 1/2" in 15 min **NOBB**

Recovered 3 ft. of CO 100% O
 Recovered 33 ft. of OCM 25% O 75% M
 Recovered 36 ft. of TOTAL FLUID

Recovered _____ ft. of _____	Price Job
Recovered _____ ft. of _____	Other Charges
Recovered _____ ft. of _____	Insurance
Remarks: <u>Diesel in bucket</u>	
Tool Sample: <u>30% O 60% M</u>	Total

Time Set Packer(s) 6:45 PM A.M. P.M. Time Started Off Bottom 8:00 PM A.M. P.M. Maximum Temperature 92

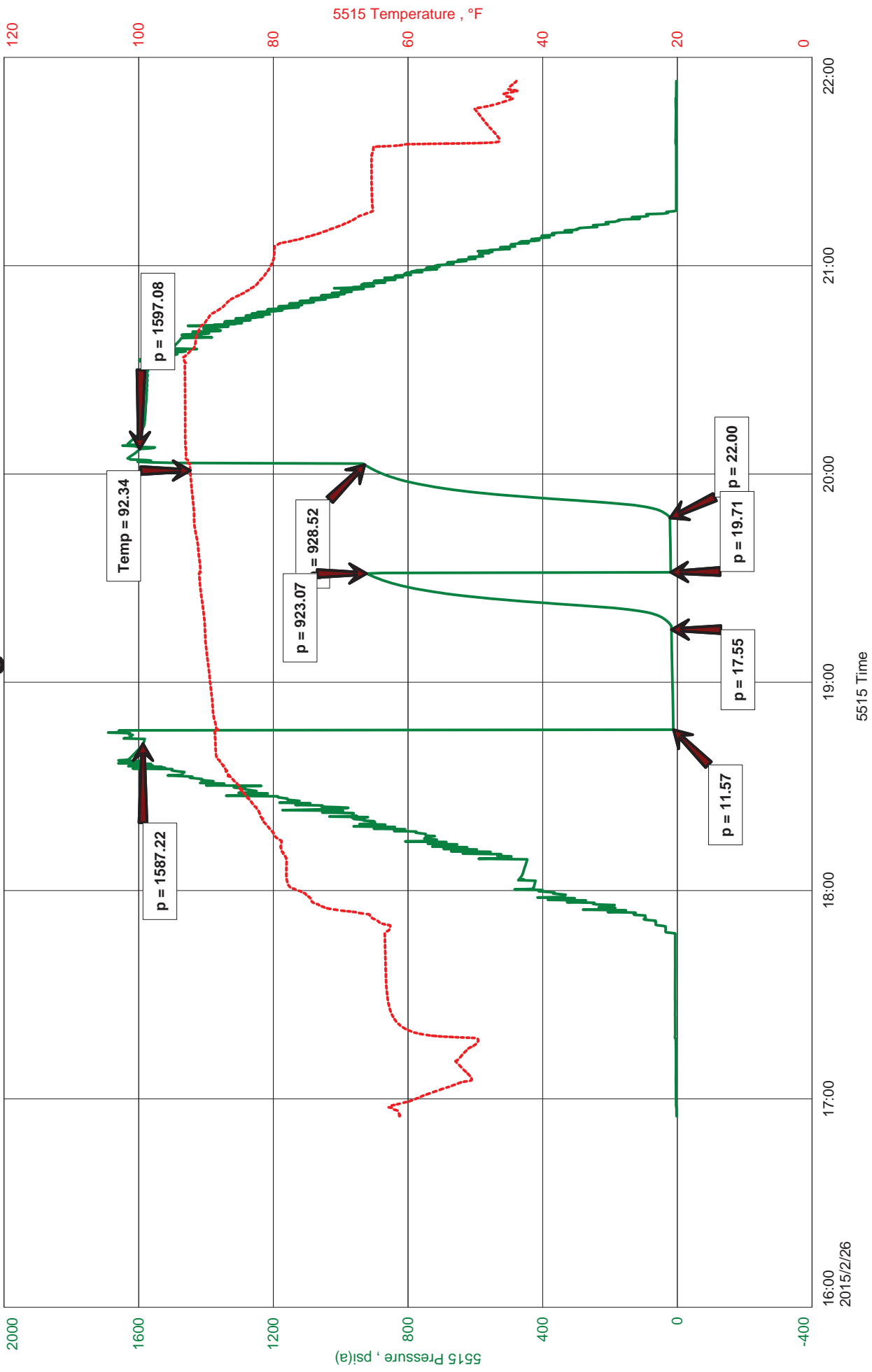
Initial Hydrostatic Pressure..... (A) 1587 P.S.I.
 Initial Flow Period..... Minutes 30 (B) 12 P.S.I. to (C) 18 P.S.I.
 Initial Closed In Period..... Minutes 15 (D) 923 P.S.I.
 Final Flow Period..... Minutes 15 (E) 20 P.S.I. to (F) 22 P.S.I.
 Final Closed In Period..... Minutes 15 (G) 929 P.S.I.
 Final Hydrostatic Pressure..... (H) 1597 P.S.I.

Diamond Testing shall not be liable for damages of any kind to the property or personnel of the one for whom a test is made or for any loss suffered or sustained, directly or indirectly, through the use of its equipment, or its statement or opinion concerning the result of any test. Tools lost or damaged in the hole shall be paid for at cost by the party for whom the test is made.

LD Drilling Inc.
DST #3 Arbuckle 3316-3341'
Start Test Date: 2015/02/26
Final Test Date: 2015/02/26

Ernsting #1-1
Formation: DST #3 Arbuckle 3316-3341'
Pool: Infield
Job Number: S0545

Ernsting #1-1





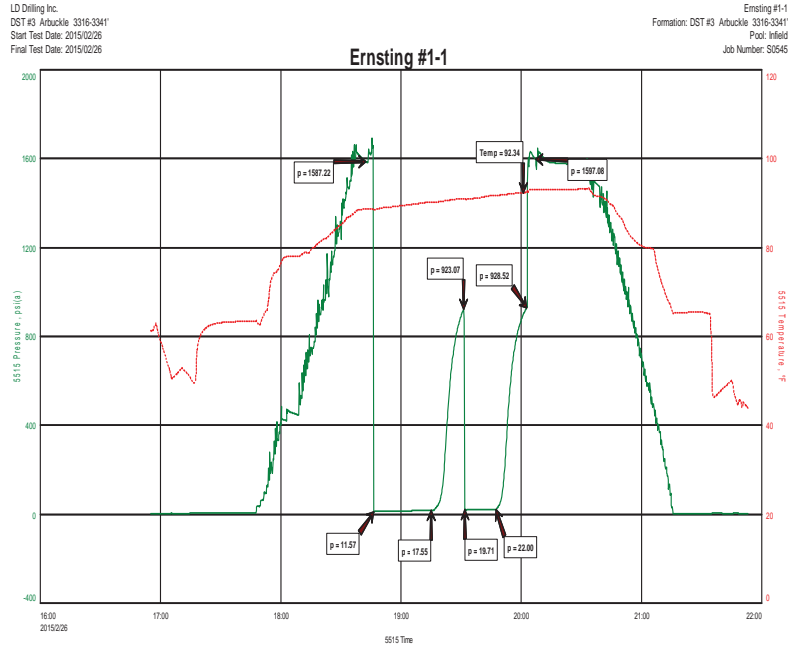
Hoisington, Kansas

JACOB MCCALLIE
620-617-7116
mccallie.dtlc@gmail.com

General Information

Company Name LD Drilling Inc.

Contact	LD Davis
Well Name	Ernsting #1-1
Unique Well ID	DST #3 Arbuckle 3316-3341'
Surface Location	SEC 1-20S-12W Barton County
Field	Chase-Silica
Well Operator	LD Drilling Inc.
Test Type	Drill Stem Test
Well Type	Vertical
Formation	DST #3 Arbuckle 3316-3341'
Well Fluid Type	01 Oil
Test Purpose (AEUB)	Initial Test
Start Test Date	2015/02/26
Start Test Time	16:55:00
Final Test Date	2015/02/26
Final Test Time	21:54:00
Job Number	S0545
Representative	Jacob McCallie
Prepared By	Jacob McCallie
Report Date	2015/02/26



FLUID RECOVERY

3'	CO	100% O
33'	OCM	25% O 75% M
36'	TOTAL FLUID	

TOOL SAMPLE:
30% O 60% M