



**TRILOBITE
TESTING, INC**

DRILL STEM TEST REPORT

Venture Resources, Inc.
2255 S Wadsworth Ste 205
Lakewood, CO 80227
ATTN: Brad Rine

30-8S-23W Graham, KS

Billips #1-30

Job Ticket: 58416

DST#: 1

Test Start: 2014.12.03 @ 15:37:40

GENERAL INFORMATION:

Formation: **KC "D"**

Deviated: No Whipstock: ft (KB)

Time Tool Opened: 20:21:40

Time Test Ended: 00:55:10

Test Type: Conventional Bottom Hole (Initial)

Tester: Brannan Lonsdale

Unit No: 62

Interval: **3736.00 ft (KB) To 3760.00 ft (KB) (TVD)**

Total Depth: 3760.00 ft (KB) (TVD)

Hole Diameter: 7.88 inches Hole Condition: Poor

Reference Elevations: 2343.00 ft (KB)

2334.00 ft (CF)

KB to GR/CF: 9.00 ft

Serial #: 8655

Outside

Press@RunDepth: 29.89 psig @ 3737.00 ft (KB)

Start Date: 2014.12.03

End Date:

2014.12.04

Start Time: 15:37:41

End Time:

00:55:10

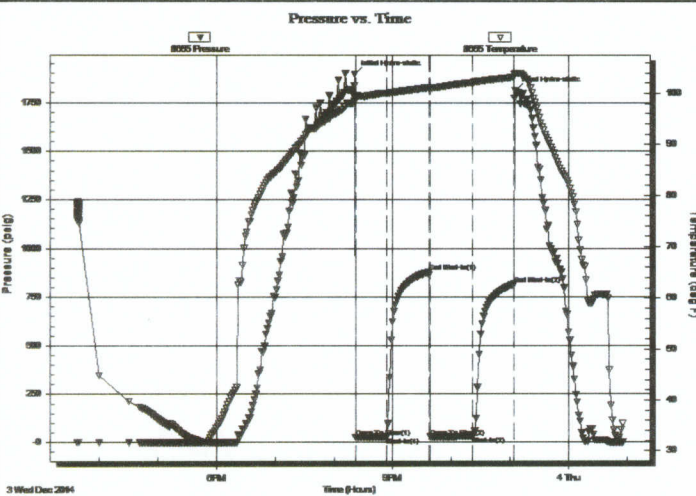
Capacity: 8000.00 psig

Last Calib.: 2014.12.04

Time On Btm: 2014.12.03 @ 20:21:10

Time Off Btm: 2014.12.03 @ 23:05:10

TEST COMMENT: 30- IF- Surface blow built to .5"
45- IS- No blow
45- FF- Intermittent surface blow
45- FS- No blow



PRESSURE SUMMARY

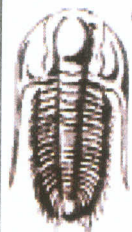
Time (Min.)	Pressure (psig)	Temp (deg F)	Annotation
0	1895.99	98.98	Initial Hydro-static
1	24.94	99.27	Open To Flow (1)
32	27.52	100.04	Shut-In(1)
76	879.36	101.12	End Shut-In(1)
77	27.08	100.97	Open To Flow (2)
120	29.89	102.14	Shut-In(2)
163	817.40	103.20	End Shut-In(2)
164	1811.08	103.97	Final Hydro-static

Recovery

Length (ft)	Description	Volume (bbl)
30.00	M	0.41

Gas Rates

	Choke (inches)	Pressure (psig)	Gas Rate (Mcf/d)



**TRILOBITE
TESTING, INC**

DRILL STEM TEST REPORT

FLUID SUMMARY

Venture Resources, Inc.

30-8S-23W Graham, KS

2255 S Wadsworth Ste 205
Lakewood, CO 80227

Billips #1-30

Job Ticket: 58416

DST#: 1

ATTN: Brad Rine

Test Start: 2014.12.03 @ 15:37:40

Mud and Cushion Information

Mud Type: Gel Chem

Cushion Type:

Oil API:

deg API

Mud Weight: 10.00 lb/gal

Cushion Length:

ft

Water Salinity:

ppm

Viscosity: 55.00 sec/qt

Cushion Volume:

bbl

Water Loss: 7.20 in³

Gas Cushion Type:

Resistivity: ohm.m

Gas Cushion Pressure:

psig

Salinity: 900.00 ppm

Filter Cake: inches

Recovery Information

Recovery Table

Length ft	Description	Volume bbl
30.00	M	0.410

Total Length: 30.00 ft

Total Volume: 0.410 bbl

Num Fluid Samples: 0

Num Gas Bombs: 0

Serial #:

Laboratory Name:

Laboratory Location:

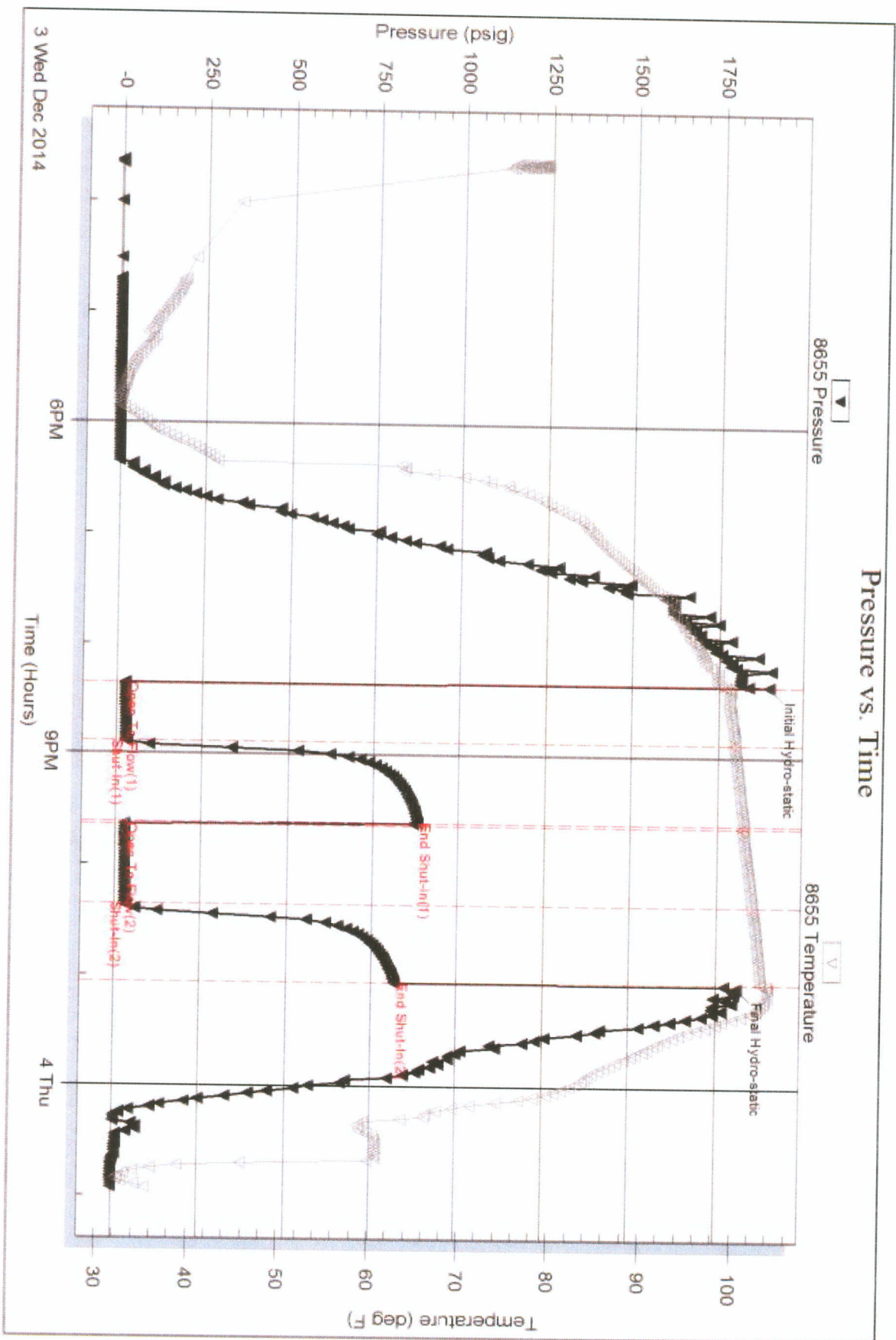
Recovery Comments:

Serial #: 8655

Outside Venture Resources, Inc.

Billips #1-30

DST Test Number: 1





TRILOBITE TESTING, INC

DRILL STEM TEST REPORT

Venture Resources, Inc.
 2255 S Wadsworth Ste 205
 Lakewood, CO 80227
 ATTN: Brad Rine

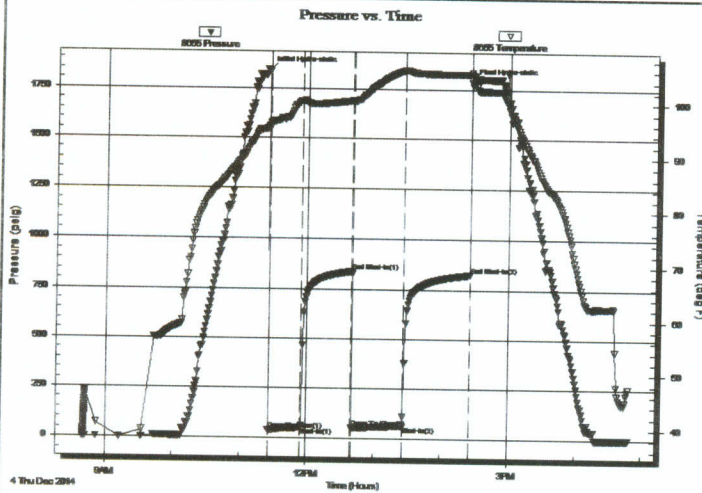
30-8S-23W Graham, KS
Billips #1-30
 Job Ticket: 58417 DST#: 2
 Test Start: 2014.12.04 @ 08:39:33

GENERAL INFORMATION:

Formation: **KC "E&F"**
 Deviated: No Whipstock: ft (KB)
 Time Tool Opened: 11:25:33
 Time Test Ended: 16:48:33
 Interval: **3756.00 ft (KB) To 3784.00 ft (KB) (TVD)**
 Total Depth: 3784.00 ft (KB) (TVD)
 Hole Diameter: 7.88 inches Hole Condition: Poor
 Test Type: Conventional Bottom Hole (Reset)
 Tester: Brannan Lonsdale
 Unit No: 62
 Reference Elevations: 2343.00 ft (KB)
 2334.00 ft (CF)
 KB to GR/CF: 9.00 ft

Serial #: 8655 Outside
 Press@RunDepth: 64.36 psig @ 3757.00 ft (KB) Capacity: 8000.00 psig
 Start Date: 2014.12.04 End Date: 2014.12.04 Last Calib.: 2014.12.04
 Start Time: 08:39:34 End Time: 16:48:33 Time On Btm: 2014.12.04 @ 11:24:03
 Time Off Btm: 2014.12.04 @ 14:25:33

TEST COMMENT: 30- IF- Built very slowly to 1"
 45- IS- No blow
 45- FF- Slowly built to 2.5"
 60- FS- No blow



PRESSURE SUMMARY

Time (Min.)	Pressure (psig)	Temp (deg F)	Annotation
0	1840.90	95.54	Initial Hydro-static
2	37.85	95.44	Open To Flow (1)
31	52.85	100.37	Shut-In(1)
76	837.81	100.48	End Shut-In(1)
77	53.80	100.29	Open To Flow (2)
122	64.36	106.20	Shut-In(2)
181	823.70	105.58	End Shut-In(2)
182	1786.43	105.85	Final Hydro-static

Recovery

Length (ft)	Description	Volume (bbl)
100.00	MW, 30%M 70%W	0.84

* Recovery from multiple tests

Gas Rates

Choke (inches)	Pressure (psig)	Gas Rate (Mcf/d)



**TRILOBITE
TESTING, INC**

DRILL STEM TEST REPORT

FLUID SUMMARY

Venture Resources, Inc.

30-8S-23W Graham, KS

2255 S Wadsworth Ste 205
Lakewood, CO 80227

Billips #1-30

Job Ticket: 58417

DST#: 2

ATTN: Brad Rine

Test Start: 2014.12.04 @ 08:39:33

Mud and Cushion Information

Mud Type: Gel Chem

Mud Weight: 9.00 lb/gal

Viscosity: 49.00 sec/qt

Water Loss: 6.80 in³

Resistivity: ohm.m

Salinity: 1000.00 ppm

Filter Cake: inches

Cushion Type:

Cushion Length: ft

Cushion Volume: bbl

Gas Cushion Type:

Gas Cushion Pressure: psig

Oil API: deg API

Water Salinity: 35000 ppm

Recovery Information

Recovery Table

Length ft	Description	Volume bbl
100.00	MW, 30%M 70%W	0.841

Total Length: 100.00 ft Total Volume: 0.841 bbl

Num Fluid Samples: 0

Num Gas Bombs: 0

Serial #:

Laboratory Name:

Laboratory Location:

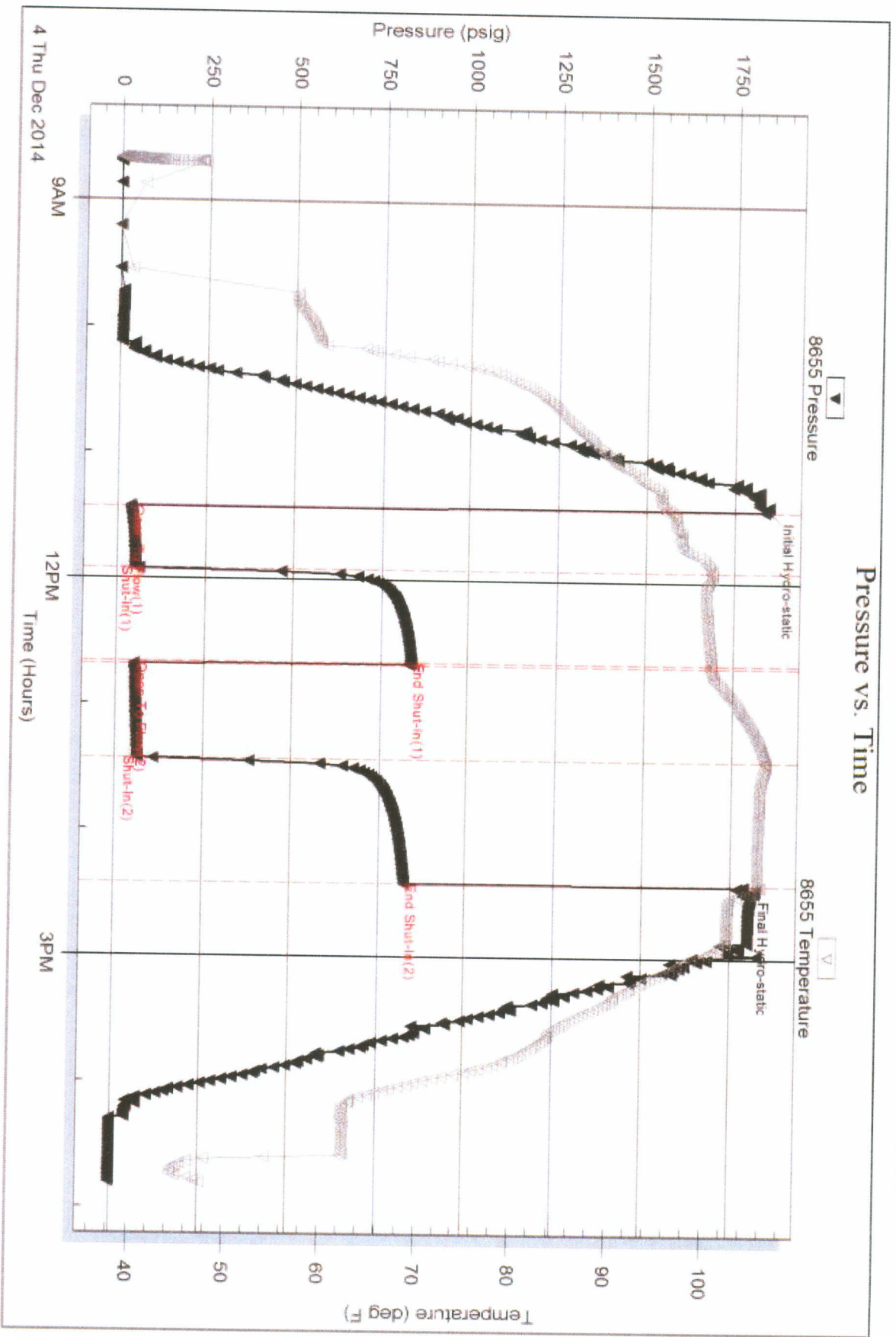
Recovery Comments:

Serial #: 8655

Outside Venture Resources, Inc

Billips #1-30

DST Test Number: 2



Tribble Testing, Inc

Ref No: 58417

Printed 2014 12 04 @ 17:32:34



TRILOBITE TESTING, INC

DRILL STEM TEST REPORT

Venture Resources, Inc.
 2255 S Wadsworth Ste 205
 Lakewood, CO 80227
 ATTN: Brad Rine

30-8S-23W Graham, KS
Billips #1-30
 Job Ticket: 58418 **DST#: 3**
 Test Start: 2014.12.05 @ 03:54:27

GENERAL INFORMATION:

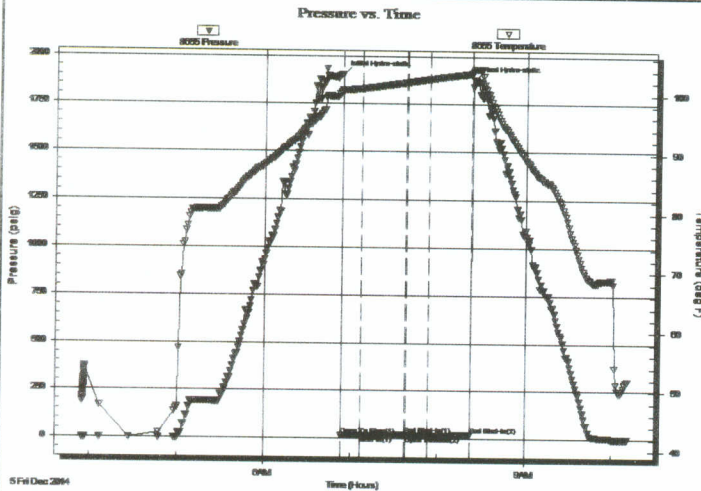
Formation: **KC "I"**
 Deviated: No Whipstock: ft (KB)
 Time Tool Opened: 06:53:27
 Time Test Ended: 10:10:57
 Interval: **3836.00 ft (KB) To 3860.00 ft (KB) (TVD)**
 Total Depth: 3860.00 ft (KB) (TVD)
 Hole Diameter: 7.88 inches Hole Condition: Poor
 Test Type: Conventional Bottom Hole (Reset)
 Tester: Brannan Lonsdale
 Unit No: 62
 Reference Elevations: 2343.00 ft (KB)
 2334.00 ft (CF)
 KB to GR/CF: 9.00 ft

Serial #: 8655

Outside

Press@RunDepth: 15.79 psig @ 3837.00 ft (KB)
 Start Date: 2014.12.05 End Date: 2014.12.05
 Start Time: 03:54:28 End Time: 10:10:57
 Capacity: 8000.00 psig
 Last Calib.: 2014.12.05
 Time On Btm: 2014.12.05 @ 06:52:57
 Time Off Btm: 2014.12.05 @ 08:23:57

TEST COMMENT: 15- IF- Surface blow died in 7mins
 30- IS- No blow
 15- FF- No blow
 30- FS- No blow



PRESSURE SUMMARY

Time (Min.)	Pressure (psig)	Temp (deg F)	Annotation
0	1904.43	100.70	Initial Hydro-static
1	16.00	100.55	Open To Flow (1)
14	16.49	100.96	Shut-In(1)
45	22.51	102.03	End Shut-In(1)
45	16.28	102.04	Open To Flow (2)
61	15.79	102.60	Shut-In(2)
90	20.05	103.58	End Shut-In(2)
91	1876.07	104.26	Final Hydro-static

Recovery

Length (ft)	Description	Volume (bbl)
2.00	M	0.03

* Recovery from multiple tests

Gas Rates

Choke (inches)	Pressure (psig)	Gas Rate (Mcf/d)



**TRILOBITE
TESTING, INC**

DRILL STEM TEST REPORT

FLUID SUMMARY

Venture Resources, Inc.

30-8S-23W Graham, KS

2255 S Wadsworth Ste 205
Lakewood, CO 80227

Billips #1-30

Job Ticket: 58418

DST#: 3

ATTN: Brad Rine

Test Start: 2014.12.05 @ 03:54:27

Mud and Cushion Information

Mud Type: Gel Chem

Mud Weight: 9.00 lb/gal

Viscosity: 49.00 sec/qt

Water Loss: 6.80 in³

Resistivity: ohm.m

Salinity: 1000.00 ppm

Filter Cake: inches

Cushion Type:

Cushion Length: ft

Cushion Volume: bbl

Gas Cushion Type:

Gas Cushion Pressure: psig

Oil API: deg API

Water Salinity: ppm

Recovery Information

Recovery Table

Length ft	Description	Volume bbl
2.00	M	0.027

Total Length: 2.00 ft

Total Volume: 0.027 bbl

Num Fluid Samples: 0

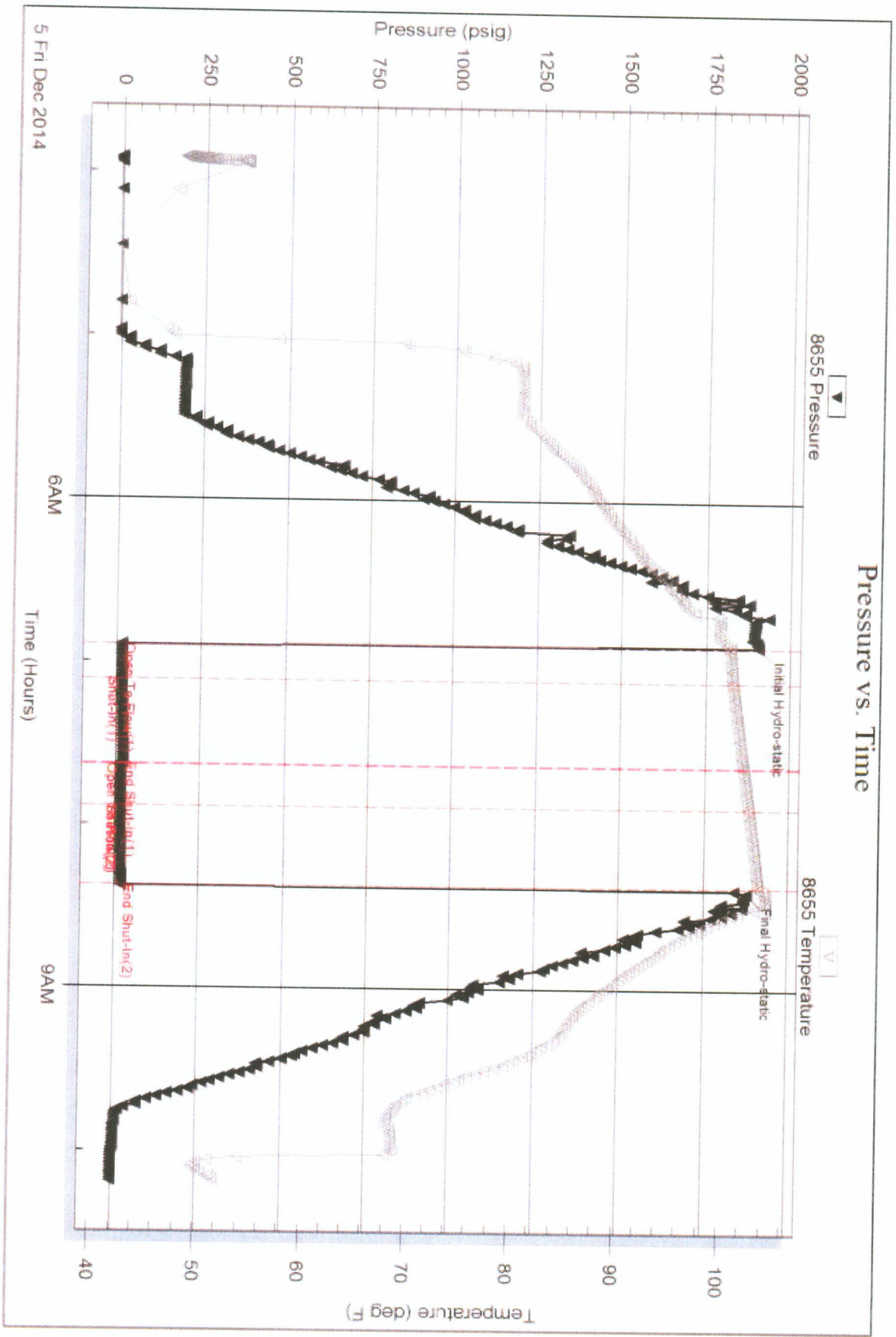
Num Gas Bombs: 0

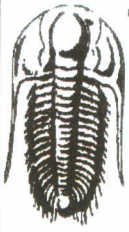
Serial #:

Laboratory Name:

Laboratory Location:

Recovery Comments:





**TRILOBITE
TESTING, INC.**

DRILL STEM TEST REPORT

Venture Resources, Inc.
2255 S Wadsworth Ste 205
Lakewood, CO 80227
ATTN: Brad Rine

30-8S-23W Graham, KS

Billips #1-30

Job Ticket: 58419

DST#: 4

Test Start: 2014.12.05 @ 16:37:45

GENERAL INFORMATION:

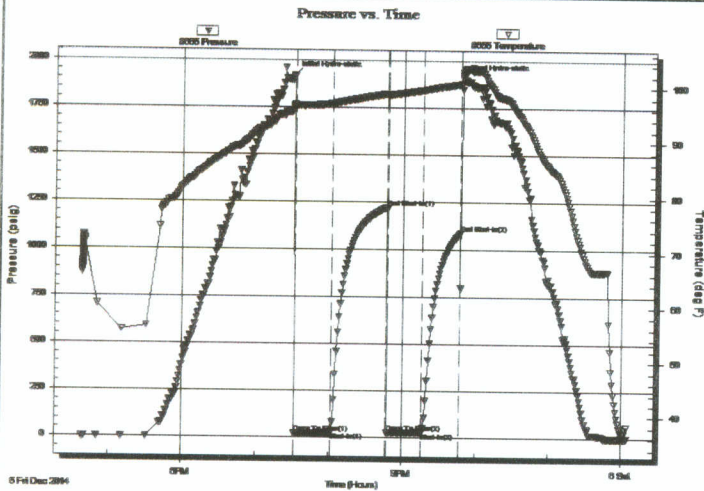
Formation: **KC "I&J"**
 Deviated: No Whipstock: ft (KB)
 Time Tool Opened: 19:32:15
 Time Test Ended: 00:04:15
 Interval: **3836.00 ft (KB) To 3878.00 ft (KB) (TVD)**
 Total Depth: 3878.00 ft (KB) (TVD)
 Hole Diameter: 7.88 inches Hole Condition: Fair
 Test Type: Conventional Bottom Hole (Reset)
 Tester: Brannan Lonsdale
 Unit No: 62
 Reference Elevations: 2343.00 ft (KB)
 2334.00 ft (CF)
 KB to GR/CF: 9.00 ft

Serial #: 8655

Outside

Press@RunDepth: 28.42 psig @ 3837.00 ft (KB)
 Start Date: 2014.12.05 End Date: 2014.12.06
 Start Time: 16:37:46 End Time: 00:04:15
 Capacity: 8000.00 psig
 Last Calib.: 2014.12.06
 Time On Btm: 2014.12.05 @ 19:30:45
 Time Off Btm: 2014.12.05 @ 21:48:45

TEST COMMENT: 30- IF- Slowly built to 1"
 45- IS- No blow
 30- FF- No blow
 45- FS- No blow



PRESSURE SUMMARY

Time (Min.)	Pressure (psig)	Temp (deg F)	Annotation
0	1916.14	96.65	Initial Hydro-static
2	20.69	96.55	Open To Flow (1)
31	24.48	96.98	Shut-In(1)
76	1222.49	98.84	End Shut-In(1)
77	25.33	98.65	Open To Flow (2)
106	28.42	99.50	Shut-In(2)
136	1087.06	100.62	End Shut-In(2)
138	1907.40	102.74	Final Hydro-static

Recovery

Length (ft)	Description	Volume (bbl)
15.00	M	0.20

* Recovery from multiple tests

Gas Rates

Choke (inches)	Pressure (psig)	Gas Rate (Mcf/d)



**TRILOBITE
TESTING, INC.**

DRILL STEM TEST REPORT

FLUID SUMMARY

Venture Resources, Inc.

30-8S-23W Graham, KS

2255 S Wadsworth Ste 205
Lakewood, CO 80227

Billips #1-30

Job Ticket: 58419

DST#: 4

ATTN: Brad Rine

Test Start: 2014.12.05 @ 16:37:45

Mud and Cushion Information

Mud Type: Gel Chem

Mud Weight: 9.00 lb/gal

Viscosity: 55.00 sec/qt

Water Loss: 7.40 in³

Resistivity: ohm.m

Salinity: 1200.00 ppm

Filter Cake: inches

Cushion Type:

Cushion Length: ft

Cushion Volume: bbl

Gas Cushion Type:

Gas Cushion Pressure: psig

Oil API:

Water Salinity: ppm

deg API

ppm

Recovery Information

Recovery Table

Length ft	Description	Volume bbl
15.00	M	0.205

Total Length: 15.00 ft

Total Volume: 0.205 bbl

Num Fluid Samples: 0

Num Gas Bombs: 0

Serial #:

Laboratory Name:

Laboratory Location:

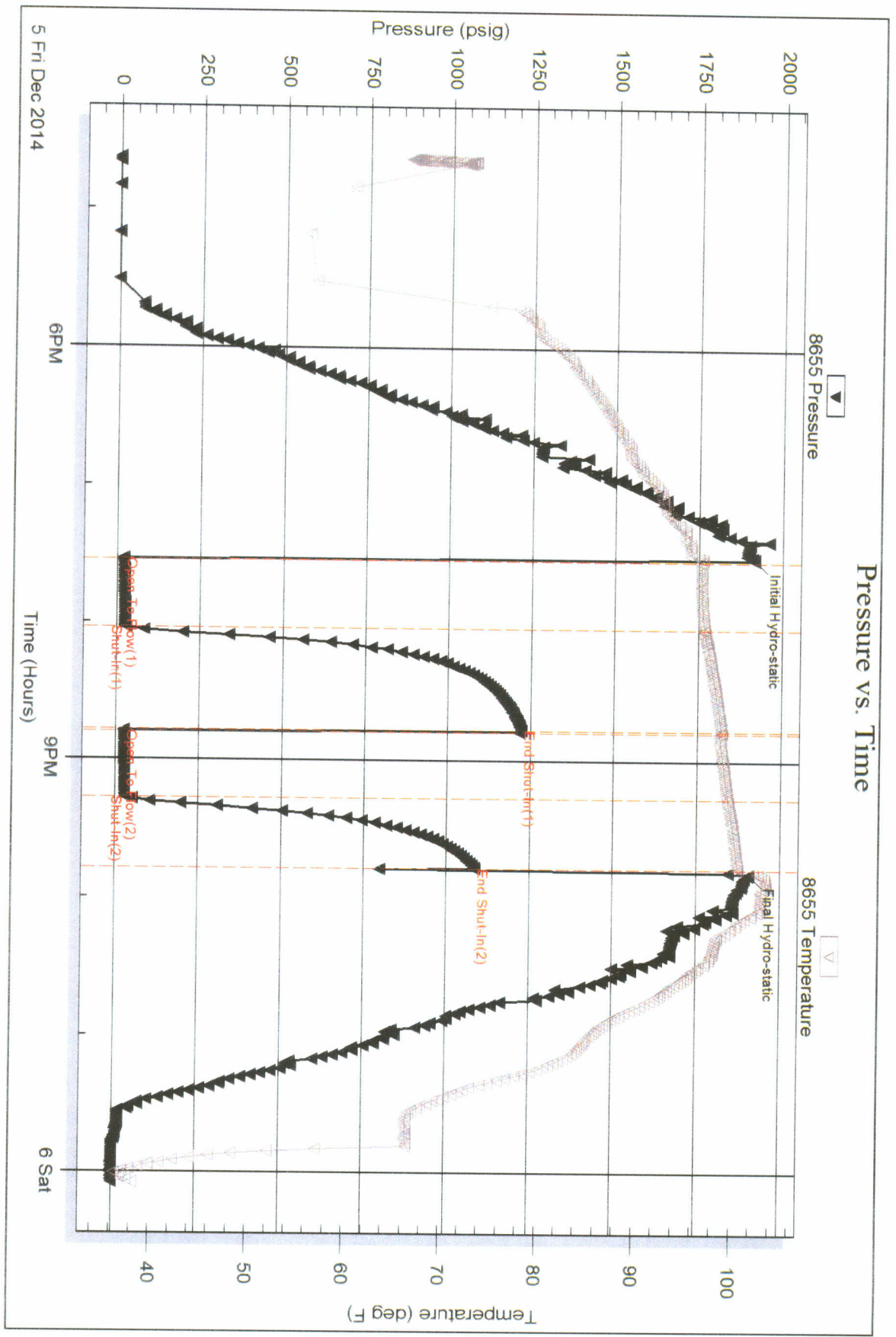
Recovery Comments:

Serial #: 8655

Outside Venture Resources, Inc.

Billips #1-30

DST Test Number: 4



Trilobite Testing, Inc

Ref. No: 58419

Printed: 2014.12.06 @ 06:52:13