

DIAMOND TESTING

General Information Report

General Information

Company Name PALOMINO PETROLEUM, INC.
Contact KLEE WATCHOUS
Well Name PRIM #1
Unique Well ID DST #1, LKC "K&L", 4301-4400
Surface Location SEC 26-19S-29W, LANE CO. KS.
Field PARIS SOUTHWEST
Well Type Vertical
Test Type CONVENTIONAL
Formation DST #1, LKC "K&L", 4301-4400
Well Fluid Type 01 Oil

Representative TIM VENTERS
Well Operator PALOMINO PETROLEUM, INC.
Report Date 2015/03/17
Prepared By TIM VENTERS
Qualified By RYAN SEIB

Start Test Date 2015/03/16
Final Test Date 2015/03/17

Start Test Time 20:55:00
Final Test Time 03:47:00

Test Recovery:

RECOVERED: 15' CO, 100% OIL, GRAVITY: 34
30' W&MCO, 53% OIL, 24% WATER, 23% MUD
190' SOHMCW, 6% OIL, 56% WATER, 38% MUD
185' SO&MCW, 9% OIL, 82% WATER, 9% MUD
420' TOTAL FLUID

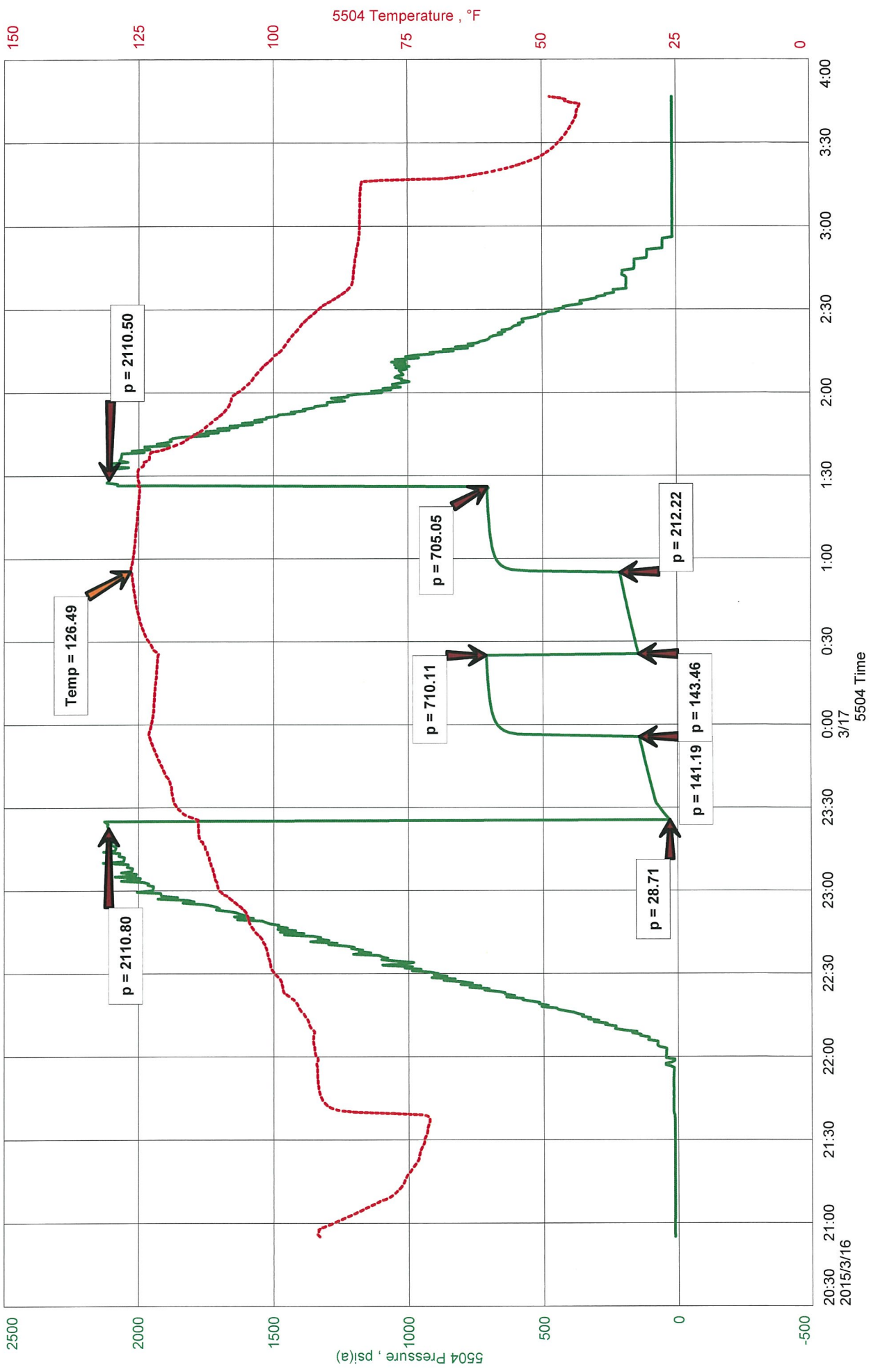
TOOL SAMPLE: 3% OIL, 91% WATER, 6% MUD

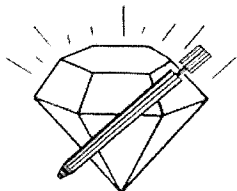
CHLORIDES: 28,000 ppm
PH: 7.5
RW: .28 @ 72 deg.

PALOMINO PETROLEUM, INC.
DST #1, LKC "K&L", 4301-4400
Start Test Date: 2015/03/16
Final Test Date: 2015/03/17

PRIM #1
Formation: DST #1, LKC "K&L", 4301-4400
Pool: PARIS SOUTHWEST
Job Number: T451

PRIM #1





DIAMOND TESTING
P.O. Box 157
HOISINGTON, KANSAS 67544
(800) 542-7313
DRILL-STEM TEST TICKET
FILE: PRIM1DST1

TIME ON: 20:55 3-16-15
TIME OFF: 03:47 3-17-15

Company PALOMINO PETROLEUM, INC. Lease & Well No. PRIM #1
Contractor WW DRILLING, LLC RIG #10 Charge to PALOMINO PETROLEUM, INC.
Elevation 2837 KB Formation LKC "K&L" Effective Pay _____ Ft. Ticket No. T451
Date 3-16-15 Sec. 26 Twp. _____ 19 S Range _____ 29 W County LANE State KANSAS
Test Approved By RYAN SEIB Diamond Representative TIMOTHY T. VENTERS

Formation Test No. 1 Interval Tested from 4301 ft. to 4400 ft. Total Depth 4400 ft.
Packer Depth 4296 ft. Size 6 3/4 in. Packer depth _____ ft. Size 6 3/4 in.
Packer Depth 4301 ft. Size 6 3/4 in. Packer depth _____ ft. Size 6 3/4 in.

Depth of Selective Zone Set _____

Top Recorder Depth (Inside) 4282 ft. Recorder Number 5504 Cap. 5,000 P.S.I.
Bottom Recorder Depth (Outside) 4397 ft. Recorder Number 11029 Cap. 5,025 P.S.I.
Below Straddle Recorder Depth _____ ft. Recorder Number _____ Cap. _____ P.S.I.

Mud Type CHEMICAL Viscosity 47 Drill Collar Length 122 ft. I.D. 2 1/4 in.
Weight 9.45 Water Loss 10.0 cc. Weight Pipe Length 0 ft. I.D. 2 7/8 in.
Chlorides 1,400 P.P.M. Drill Pipe Length 4146 ft. I.D. 3 1/2 in.

Jars: Make STERLING Serial Number 2 Test Tool Length 33 ft. Tool Size 3 1/2-IF in.

Did Well Flow? NO Reversed Out NO Anchor Length 35 ft. Size 4 1/2-FH in.

Main Hole Size 7 7/8 Tool Joint Size 4 1/2 XH in. ^{64' DP IN ANCHOR} Surface Choke Size 1 in. Bottom Choke Size 5/8 in.

Blow: 1st Open: WEAK 1/4 INCH BLOW, BUILDING, REACHING BOB 20 1/2 MIN. (NO BB)
2nd Open: WEAK SURFACE BLOW, BUILDING, REACHING BOB 24 MIN. (WS BB)

Recovered 15 ft. of CO, 100% OIL, GRAVITY: 34
Recovered 30 ft. of W&MCO, 53% OIL, 24% WATER, 23% MUD
Recovered 190 ft. of SOHMCW, 6% OIL, 56% WATER, 38% MUD
Recovered 185 ft. of SO&MCW, 9% OIL, 82% WATER, 9% MUD

Recovered <u>420</u> ft. of <u>TOTAL FLUID</u>	Price Job
Recovered _____ ft. of _____	Other Charges
Remarks: _____	Insurance
_____	Total

TOOL SAMPLE: 3% OIL, 91% WATER, 6% MUD

Time Set Packer(s) 11:25 PM ^{A.M.}/_{P.M.} Time Started Off Bottom 1:25 AM ^{A.M.}/_{P.M.} Maximum Temperature 126 deg.
Initial Hydrostatic Pressure..... (A) 2111 P.S.I.
Initial Flow Period..... Minutes 30 (B) 29 P.S.I. to (C) 141 P.S.I.
Initial Closed In Period..... Minutes 30 (D) 710 P.S.I.
Final Flow Period..... Minutes 30 (E) 143 P.S.I. to (F) 212 P.S.I.
Final Closed In Period..... Minutes 30 (G) 705 P.S.I.
Final Hydrostatic Pressure..... (H) 2111 P.S.I.

Diamond Testing shall not be liable for damages of any kind to the property or personnel of the one for whom a test is made or for any loss suffered or sustained, directly or indirectly, through the use of its equipment, or its statement or opinion concerning the result of any test. Tools lost or damaged in the hole shall be paid for at cost by the party for whom the test is made.

DIAMOND TESTING

General Information Report

General Information

Company Name PALOMINO PETROLEUM, INC.
Contact KLEE WATCHOUS
Well Name PRIM #1
Unique Well ID DST #2, MARMATON, 4380-4500
Surface Location SEC 26-19S-29W, LANE CO. KS.
Field PARIS SOUTHWEST
Well Type Vertical
Test Type CONVENTIONAL
Formation DST #2, MARMATON, 4380-4500
Well Fluid Type 01 Oil

Representative TIM VENTERS
Well Operator PALOMINO PETROLEUM, INC.
Report Date 2015/03/18
Prepared By TIM VENTERS
Qualified By RYAN SEIB

Start Test Date 2015/03/17
Final Test Date 2015/03/17

Start Test Time 16:53:00
Final Test Time 23:13:00

Test Recovery:

RECOVERED: 155' SO&WCM, 4% OIL, 7% WATER, 89% MUD
565' SOHMCW, 5% OIL, 52% WATER, 43% MUD
565' SO&MCW, 1% OIL, 91% WATER, 8% MUD
1285' TOTAL FLUID

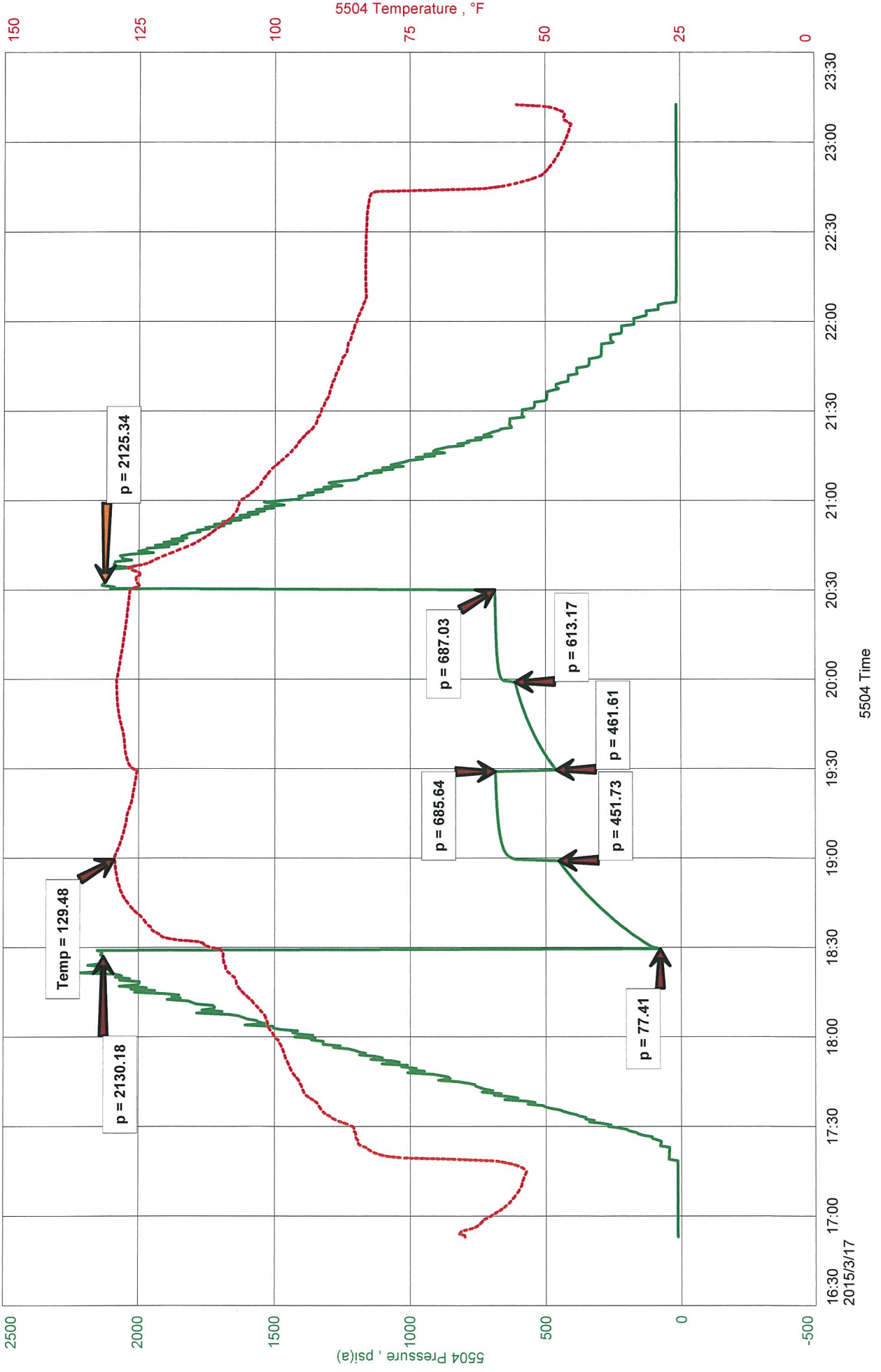
FOOL SAMPLE: 2% OIL, 90% WATER, 8% MUD

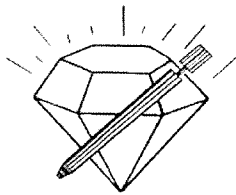
CHLORIDES: 30,000 ppm
pH: 7.5
RW: .24 @ 86 deg.

PALOMINO PETROLEUM, INC.
DST #2, MARMATON, 4380-4500
Start Test Date: 2015/03/17
Final Test Date: 2015/03/17

PRIM #1
Formation: DST #2, MARMATON, 4380-4500
Pool: PARIS SOUTHWEST
Job Number: T452

PRIM #1





DIAMOND TESTING
P.O. Box 157
HOISINGTON, KANSAS 67544
(800) 542-7313
DRILL-STEM TEST TICKET
FILE: PRIM1DST2

TIME ON: 16:53
TIME OFF: 23:13

Company PALOMINO PETROLEUM, INC. Lease & Well No. PRIM #1
Contractor VW DRILLING, LLC RIG #10 Charge to PALOMINO PETROLEUM, INC.
Elevation 2837 KB Formation MARMATON Effective Pay _____ Ft. Ticket No. T452
Date 3-17-15 Sec. 26 Twp. _____ 19 S Range _____ 29 W County LANE State KANSAS
Test Approved By RYAN SEIB Diamond Representative TIMOTHY T. VENTERS

Formation Test No. 2 Interval Tested from 4380 ft. to 4500 ft. Total Depth 4500 ft.
Packer Depth 4375 ft. Size 6 3/4 in. Packer depth _____ ft. Size 6 3/4 in.
Packer Depth 4380 ft. Size 6 3/4 in. Packer depth _____ ft. Size 6 3/4 in.

Depth of Selective Zone Set _____

Top Recorder Depth (Inside) 4361 ft. Recorder Number 5504 Cap. 5,000 P.S.I.
Bottom Recorder Depth (Outside) 4497 ft. Recorder Number 11029 Cap. 5,025 P.S.I.
Below Straddle Recorder Depth _____ ft. Recorder Number _____ Cap. _____ P.S.I.

Mud Type CHEMICAL Viscosity 48 Drill Collar Length 122 ft. I.D. 2 1/4 in.
Weight 9.4 Water Loss 8.0 cc. Weight Pipe Length 0 ft. I.D. 2 7/8 in.
Chlorides 2,200 P.P.M. Drill Pipe Length 4225 ft. I.D. 3 1/2 in.

Jars: Make STERLING Serial Number 2 Test Tool Length 33 ft. Tool Size 3 1/2-IF in.

Did Well Flow? NO Reversed Out NO Anchor Length 25 ft. Size 4 1/2-FH in.

Main Hole Size 7 7/8 Tool Joint Size 4 1/2 XH in. ^{95' DP IN ANCHOR} Surface Choke Size 1 in. Bottom Choke Size 5/8 in.

Blow: 1st Open: GOOD 1 1/2 INCH BLOW, BUILDING, REACHING BOB 3 MIN. (NO BB)
2nd Open: WEAK 1/2 INCH BLOW, BUILDING, REACHING BOB 6 1/2 MIN. (NO BB)

Recovered 155 ft. of SO&WCM, 4% OIL, 7% WATER, 89% MUD
Recovered 565 ft. of SOHMCW, 5% OIL, 52% WATER, 43% MUD
Recovered 565 ft. of SO&MCW, 1% OIL, 91% WATER, 8% MUD
Recovered 1285 ft. of TOTAL FLUID

Recovered _____ ft. of _____	Price Job
Recovered _____ ft. of _____	Other Charges
Remarks: _____	Insurance
_____	Total

TOOL SAMPLE: 2% OIL, 90% WATER, 8% MUD

Time Set Packer(s) 6:29 PM A.M. P.M. Time Started Off Bottom 8:29 PM A.M. P.M. Maximum Temperature 129 deg.
Initial Hydrostatic Pressure..... (A) 2130 P.S.I.
Initial Flow Period..... Minutes 30 (B) 77 P.S.I. to (C) 452 P.S.I.
Initial Closed In Period..... Minutes 30 (D) 686 P.S.I.
Final Flow Period..... Minutes 30 (E) 462 P.S.I. to (F) 613 P.S.I.
Final Closed In Period..... Minutes 30 (G) 687 P.S.I.
Final Hydrostatic Pressure..... (H) 2125 P.S.I.

Diamond Testing shall not be liable for damages of any kind to the property or personnel of the one for whom a test is made or for any loss suffered or sustained, directly or indirectly, through the use of its equipment, or its statement or opinion concerning the result of any test. Tools lost or damaged in the hole shall be paid for at cost by the party for whom the test is made.

DIAMOND TESTING

General Information Report

General Information

Company Name PALOMINO PETROLEUM, INC.
Contact KLEE WATCHOUS
Well Name PRIM #1
Unique Well ID DST #3, MARMATON, 4440-4486
Surface Location SEC 26-19S-29W, LANE CO. KS.
Field PARIS SOUTHWEST
Well Type Vertical
Test Type STRADDLE
Formation DST #3, MARMATON, 4440-4486
Well Fluid Type 01 Oil

Representative TIM VENTERS
Well Operator PALOMINO PETROLEUM, INC.
Report Date 2015/03/19
Prepared By TIM VENTERS
Qualified By RYAN SEIB

Start Test Date 2015/03/19
Final Test Date 2015/03/19

Start Test Time 00:26:00
Final Test Time 06:55:00

Test Recovery:

RECOVERED: 630' SOHMCW, 3% OIL, 51% WATER, 46% MUD
565' SO&MCW, 2% OIL, 78% WATER, 20% MUD
75' SO&WCM, 1% OIL, 26% WATER, 73% MUD
1270' TOTAL FLUID

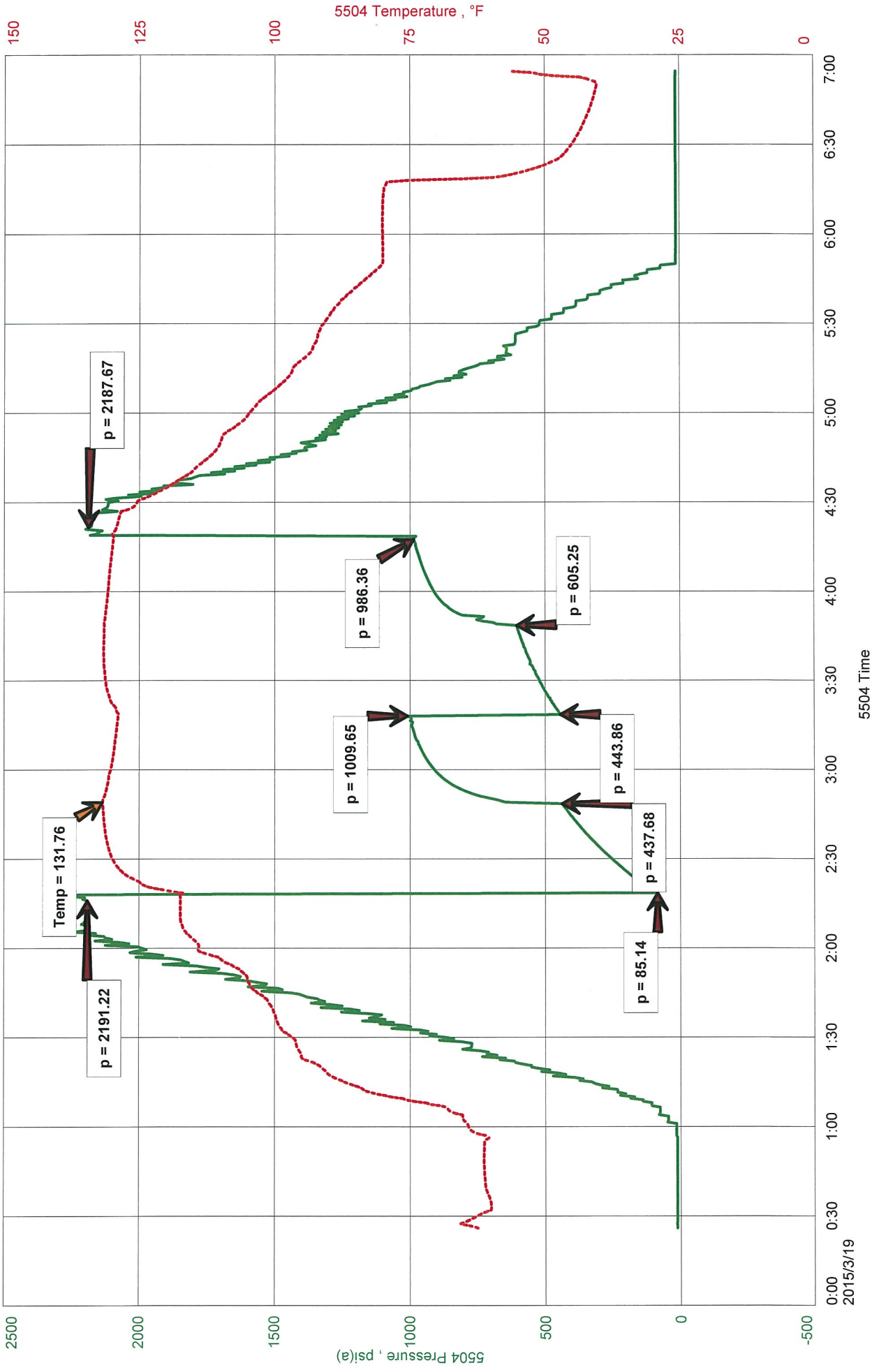
TOOL SAMPLE: TRACE OIL, 75% WATER, 25% MUD

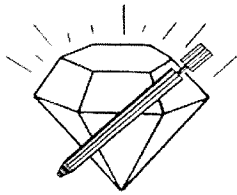
CHORIDES: 30,000 ppm
pH: 7.5
pW: .29 @ 71 deg.

PALOMINO PETROLEUM, INC.
DST #3, MARMATON, 4440-4486
Start Test Date: 2015/03/19
Final Test Date: 2015/03/19

PRIM #1
Formation: DST #3, MARMATON, 4440-4486
Pool: PARIS SOUTHWEST
Job Number: T453

PRIM #1





DIAMOND TESTING
P.O. Box 157
HOISINGTON, KANSAS 67544
(800) 542-7313
DRILL-STEM TEST TICKET
FILE: PRIM1DST3

TIME ON: 00:26
TIME OFF: 06:55

Company PALOMINO PETROLEUM, INC. Lease & Well No. PRIM #1
Contractor VW DRILLING, LLC RIG #10 Charge to PALOMINO PETROLEUM, INC.
Elevation 2837 KB Formation MARMATON Effective Pay _____ Ft. Ticket No. T453
Date 3-19-15 Sec. 26 Twp. 19 S Range 29 W County LANE State KANSAS
Test Approved By RYAN SEIB Diamond Representative TIMOTHY T. VENTERS

Formation Test No. 3 Interval Tested from 4440 ft. to 4486 ft. Total Depth 4759 ft.
Packer Depth 4435 ft. Size 6 3/4 in. Packer depth 4486 ft. Size 6 3/4 in.
Packer Depth 4440 ft. Size 6 3/4 in. Packer depth _____ ft. Size 6 3/4 in.

Depth of Selective Zone Set _____

Top Recorder Depth (Inside) 4421 ft. Recorder Number 5504 Cap. 5,000 P.S.I.
Bottom Recorder Depth (Outside) 4483 ft. Recorder Number 13819 Cap. 5,025 P.S.I.
Below Straddle Recorder Depth 4756 ft. Recorder Number 11029 Cap. 5,025 P.S.I.

Mud Type CHEMICAL Viscosity 48 Drill Collar Length 122 ft. I.D. 2 1/4 in.

Weight 9.4 Water Loss 8.0 cc. Weight Pipe Length 0 ft. I.D. 2 7/8 in.

Chlorides 1,900 P.P.M. Drill Pipe Length 4285 ft. I.D. 3 1/2 in.

Jars: Make STERLING Serial Number 2 Test Tool Length 33 ft. Tool Size 3 1/2-IF in.

Did Well Flow? NO Reversed Out NO Anchor Length 14 ft. Size 4 1/2-FH in.

Main Hole Size 7 7/8 Tool Joint Size 4 1/2 XH in. ^{32' DP IN ANCHOR} Surface Choke Size 1 in. Bottom Choke Size 5/8 in.

Blow: 1st Open: GOOD 2 1/2 INCH BLOW, BUILDING, REACHING BOB 3 1/2 MIN. (NO BB)
2nd Open: WEAK 1/2 INCH BLOW, BUILDING, REACHING BOB 7 MIN. (NO BB)

Recovered 630 ft. of SOHMCW, 3% OIL, 51% WATER, 46% MUD
Recovered 565 ft. of SO&MCW, 2% OIL, 78% WATER, 20% MUD
Recovered 75 ft. of SO&WCM, 1% OIL, 26% WATER, 73% MUD
Recovered 1270 ft. of TOTAL FLUID

Recovered _____ ft. of _____	Price Job
Recovered _____ ft. of _____	Other Charges
Remarks: _____	Insurance
_____	Total

TOOL SAMPLE: TRACE OIL, 75% WATER, 25% MUD

Time Set Packer(s) 2:18 A.M. P.M. Time Started Off Bottom 4:18 A.M. P.M. Maximum Temperature 132 deg.
Initial Hydrostatic Pressure..... (A) 2191 P.S.I.
Initial Flow Period..... Minutes 30 (B) 85 P.S.I. to (C) 438 P.S.I.
Initial Closed In Period..... Minutes 30 (D) 1010 P.S.I.
Final Flow Period..... Minutes 30 (E) 444 P.S.I. to (F) 605 P.S.I.
Final Closed In Period..... Minutes 30 (G) 986 P.S.I.
Final Hydrostatic Pressure..... (H) 2188 P.S.I.

Diamond Testing shall not be liable for damages of any kind to the property or personnel of the one for whom a test is made or for any loss suffered or sustained, directly or indirectly, through the use of its equipment, or its statement or opinion concerning the result of any test. Tools lost or damaged in the hole shall be paid for at cost by the party for whom the test is made.

DIAMOND TESTING

General Information Report

General Information

Company Name PALOMINO PETROLEUM, INC.
Contact KLEE WATCHOUS
Well Name PRIM #1
Unique Well ID DST #3, MARMATON, 4440-4486
Surface Location SEC 26-19S-29W, LANE CO. KS.
Field PARIS SOUTHWEST
Well Type Vertical
Test Type STRADDLE
Formation DST #3, MARMATON, 4440-4486
Well Fluid Type 01 Oil

Representative TIM VENTERS
Well Operator PALOMINO PETROLEUM, INC.
Report Date 2015/03/19
Prepared By TIM VENTERS
Qualified By RYAN SEIB

Start Test Date 2015/03/19
Final Test Date 2015/03/19

Start Test Time 00:26:00
Final Test Time 06:55:00

Test Recovery:

RECOVERED: 630' SOHMCW, 3% OIL, 51% WATER, 46% MUD
565' SO&MCW, 2% OIL, 78% WATER, 20% MUD
75' SO&WCM, 1% OIL, 26% WATER, 73% MUD
1270' TOTAL FLUID

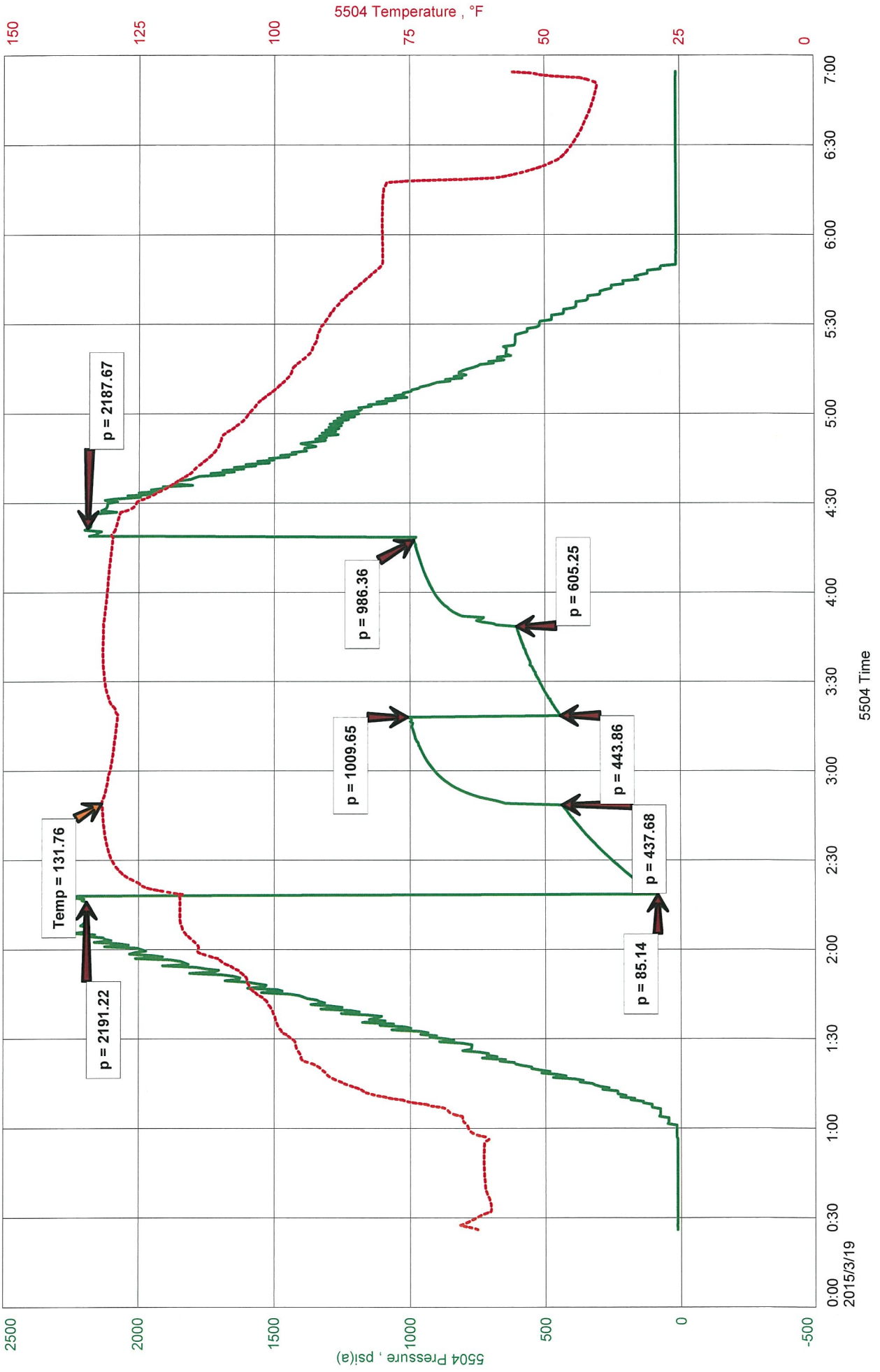
COOL SAMPLE: TRACE OIL, 75% WATER, 25% MUD

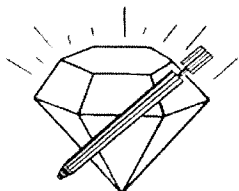
CHLORIDES: 30,000 ppm
pH: 7.5
RW: .29 @ 71 deg.

PALOMINO PETROLEUM, INC.
DST #3, MARMATON, 4440-4486
Start Test Date: 2015/03/19
Final Test Date: 2015/03/19

PRIM #1
Formation: DST #3, MARMATON, 4440-4486
Pool: PARIS SOUTHWEST
Job Number: T453

PRIM #1





DIAMOND TESTING
P.O. Box 157
HOISINGTON, KANSAS 67544
(800) 542-7313
DRILL-STEM TEST TICKET
FILE: PRIM1DST3

TIME ON: 00:26
TIME OFF: 06:55

Company PALOMINO PETROLEUM, INC. Lease & Well No. PRIM #1
Contractor VW DRILLING, LLC RIG #10 Charge to PALOMINO PETROLEUM, INC.
Elevation 2837 KB Formation MARMATON Effective Pay _____ Ft. Ticket No. T453
Date 3-19-15 Sec. 26 Twp. _____ 19 S Range _____ 29 W County LANE State KANSAS
Test Approved By RYAN SEIB Diamond Representative TIMOTHY T. VENTERS

Formation Test No. 3 Interval Tested from 4440 ft. to 4486 ft. Total Depth 4759 ft.
Packer Depth 4435 ft. Size 6 3/4 in. Packer depth 4486 ft. Size 6 3/4 in.
Packer Depth 4440 ft. Size 6 3/4 in. Packer depth _____ ft. Size 6 3/4 in.

Depth of Selective Zone Set _____

Top Recorder Depth (Inside) 4421 ft. Recorder Number 5504 Cap. 5,000 P.S.I.
Bottom Recorder Depth (Outside) 4483 ft. Recorder Number 13819 Cap. 5,025 P.S.I.
Below Straddle Recorder Depth 4756 ft. Recorder Number 11029 Cap. 5,025 P.S.I.

Mud Type CHEMICAL Viscosity 48 Drill Collar Length 122 ft. I.D. 2 1/4 in.
Weight 9.4 Water Loss 8.0 cc. Weight Pipe Length 0 ft. I.D. 2 7/8 in.
Chlorides 1,900 P.P.M. Drill Pipe Length 4285 ft. I.D. 3 1/2 in.

Jars: Make STERLING Serial Number 2 Test Tool Length 33 ft. Tool Size 3 1/2-IF in.

Did Well Flow? NO Reversed Out NO Anchor Length 14 ft. Size 4 1/2-FH in.

Main Hole Size 7 7/8 Tool Joint Size 4 1/2 XH in. ^{32' DP IN ANCHOR} Surface Choke Size 1 in. Bottom Choke Size 5/8 in.

Blow: 1st Open: GOOD 2 1/2 INCH BLOW, BUILDING, REACHING BOB 3 1/2 MIN. (NO BB)

2nd Open: WEAK 1/2 INCH BLOW, BUILDING, REACHING BOB 7 MIN. (NO BB)

Recovered 630 ft. of SOHMCW, 3% OIL, 51% WATER, 46% MUD

Recovered 565 ft. of SO&MCW, 2% OIL, 78% WATER, 20% MUD

Recovered 75 ft. of SO&WCM, 1% OIL, 26% WATER, 73% MUD

Recovered 1270 ft. of TOTAL FLUID

Recovered _____ ft. of _____ Price Job _____

Recovered _____ ft. of CHLORIDES: 30,000 ppm Other Charges _____

Remarks: PH: 7.5 Insurance _____

RW: .29 @ 71 deg.

TOOL SAMPLE: TRACE OIL, 75% WATER, 25% MUD Total _____

Time Set Packer(s) 2:18 ^{A.M.}/_{P.M.} Time Started Off Bottom 4:18 ^{A.M.}/_{P.M.} Maximum Temperature 132 deg.

Initial Hydrostatic Pressure..... (A) 2191 P.S.I.

Initial Flow Period..... Minutes 30 (B) 85 P.S.I. to (C) 438 P.S.I.

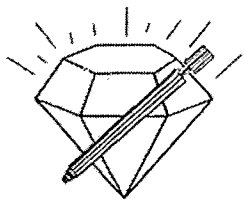
Initial Closed In Period..... Minutes 30 (D) 1010 P.S.I.

Final Flow Period..... Minutes 30 (E) 444 P.S.I. to (F) 605 P.S.I.

Final Closed In Period..... Minutes 30 (G) 986 P.S.I.

Final Hydrostatic Pressure..... (H) 2188 P.S.I.

Diamond Testing shall not be liable for damages of any kind to the property or personnel of the one for whom a test is made or for any loss suffered or sustained, directly or indirectly, through the use of its equipment, or its statement or opinion concerning the result of any test. Tools lost or damaged in the hole shall be paid for at cost by the party for whom the test is made.



DIAMOND TESTING, LLC
P.O. Box 157
HOISINGTON, KANSAS 67544
(620) 653-7550 • (800) 542-7313
PRIM1DST4

Company Palomino Petroleum, Inc. Lease & Well No. Prim No. 1
Elevation 2837 KB Formation Lansing/Kansas City "K" Effective Pay Ft. Ticket No. T454
Date 3-19-15 Sec. 26 Twp. 19S Range 29W County Lane State Kansas
Test Approved By Ryan Seib Diamond Representative Tim Venters

Formation Test No. 4 Interval Tested from 4,301 ft. to 4,331 ft. Total Depth 4,759 ft
Packer Depth 4,296 ft. Size 6 3/4 in. Packer Depth 4,331 ft. Size 6 3/4 in.
Packer Depth 4,301 ft. Size 6 3/4 in. Packer Depth ft. Size in.
Depth of Selective Zone Set 4,331 ft.

Top Recorder Depth (Inside) 4,282 ft. Recorder Number 5504 Cap. 5,000 psi.
Bottom Recorder Depth (Outside) 4,328 ft. Recorder Number 11029 Cap. 5,025 psi.
Below Straddle Recorder Depth 4,756 ft. Recorder Number 13819 Cap. 5,025 psi.

Drilling Contractor WW Drilling, LLC - Rig 10 Drill Collar Length 122 ft I.D. 2 1/4 in.
Mud Type Chemical Viscosity 48 Weight Pipe Length ft I.D. in.
Weight 9.4 Water Loss 8.0 cc. Drill Pipe Length 4,146 ft I.D. 3 1/2 in.
Chlorides 1,900 P.P.M. Test Tool Length 33 ft Tool Size 3 1/2-IF in.
Jars: Make Sterling Serial Number 2 Anchor Length 30' perf. w/428' tail pipe Size 4 1/2-FH in.
Did Well Flow? No Reversed Out No Surface Choke Size 1 in. Bottom Choke Size 5/8 in.
Main Hole Size 7 7/8 in. Tool Joint Size 4 1/2-XH in.

Blow: 1st Open: Weak, 1 in. blow increasing. Off bottom of bucket in 29 mins. No blow back during shut-in.

2nd Open: Weak, surface blow increasing to 9 ins. No blow back during shut-in.

Recovered 95 ft. of mud w/trace oil = 1.351850 bbls. (Grind out: Trace-oil; 100%-mud)
Recovered 125 ft. of heavy mud cut water w/trace oil = 1.760130 bbls. (Grind out: Trace-oil; 59%-water; 41%-mud)
Recovered 60 ft. of slightly mud cut water w/trace oil = .295200 bbls. (Grind out: Trace-oil; 90%-water; 10%-mud) Chlorides: 21,000 Ppm PH: 7.5 RW: .52 @ 61°
Recovered 60 ft. of water cut mud = .295200 bbls. (Grind out: 31%-water; 69%-mud)
Recovered 340 ft. of TOTAL FLUID = 3.702380 bbls.

Recovered ft. of
Remarks Tool Sample Grind Out: Trace-oil; 65%-water; 35%-mud

Time Set Packer(s) 10:55 A.M. Time Started off Bottom 12:55 P.M. Maximum Temperature 126°
Initial Hydrostatic Pressure.....(A) 2133 P.S.I.
Initial Flow Period.....Minutes 30 (B) 42 P.S.I. to (C) 124 P.S.I.
Initial Closed In Period.....Minutes 30 (D) 705 P.S.I.
Final Flow Period.....Minutes 30 (E) 129 P.S.I. to (F) 179 P.S.I.
Final Closed In Period.....Minutes 30 (G) 702 P.S.I.
Final Hydrostatic Pressure.....(H) 2131 P.S.I.

DIAMOND TESTING

General Information Report

General Information

Company Name PALOMINO PETROLEUM, INC.
Contact KLEE WATCHOUS
Well Name PRIM #1
Unique Well ID DST #4, LKC "K", 4301-4331
Surface Location SEC 26-19S-29W, LANE CO. KS.
Field PARIS SOUTHWEST
Well Type Vertical
Test Type STRADDLE
Formation DST #4, LKC "K", 4301-4331
Well Fluid Type 01 Oil

Representative TIM VENTERS
Well Operator PALOMINO PETROLEUM, INC.
Report Date 2015/03/19
Prepared By TIM VENTERS

Qualified By RYAN SEIB

Start Test Date 2015/03/19
Final Test Date 2015/03/19

Start Test Time 09:28:00
Final Test Time 15:04:00

Test Recovery:

RECOVERED: 95' M W/TR. O, TRACE OIL, 100% MUD
 125' HMCW W/TR. O, TRACE OIL, 59% WATER, 41% MUD
 60' SMCW W/TR. O, TRACE OIL, 90% WATER, 10% MUD
 60' WCM, 31% WATER, 69% MUD
 340' TOTAL FLUID

TOOL SAMPLE: TRACE OIL, 65% WATER, 35% MUD

CHLORIDES: 21,000 ppm
PH: 7.5
RW: .52 @ 61 deg.

PALOMINO PETROLEUM, INC.
DST #4, LKC "K", 4301-4331
Start Test Date: 2015/03/19
Final Test Date: 2015/03/19

PRIM #1
Formation: DST #4, LKC "K", 4301-4331
Pool: PARIS SOUTHWEST
Job Number: T454

PRIM #1

