



**TRILOBITE
TESTING, INC.**

DRILL STEM TEST REPORT

Vincent Oil Corp.
155 N. Market Ste. 700
Wichita, KS 67202-1821
ATTN: Tom Dudgeon

28-28s-23w. Ford Co. Ks

Brown 2-28

Job Ticket: 59957

DST#: 2

Test Start: 2015.01.03 @ 00:31:13

GENERAL INFORMATION:

Formation: **Penn. Lime**

Deviated: No Whipstock: 0.00 ft (KB)

Time Tool Opened: 02:31:13

Time Test Ended: 08:56:58

Test Type: Conventional Bottom Hole (Reset)

Tester: Ryan Reynolds

Unit No: 68

Interval: 5069.00 ft (KB) To 5130.00 ft (KB) (TVD)

Total Depth: 5130.00 ft (KB) (TVD)

Hole Diameter: 7.88 inches Hole Condition: Fair

Reference Elevations: 2483.00 ft (KB)

2473.00 ft (CF)

KB to GR/CF: 10.00 ft

Serial #: 8790

Press @ RunDepth: 56.68 psig @ 5070.00 ft (KB)

Start Date: 2015.01.03

End Date:

2015.01.03

Start Time: 00:31:18

End Time:

08:56:57

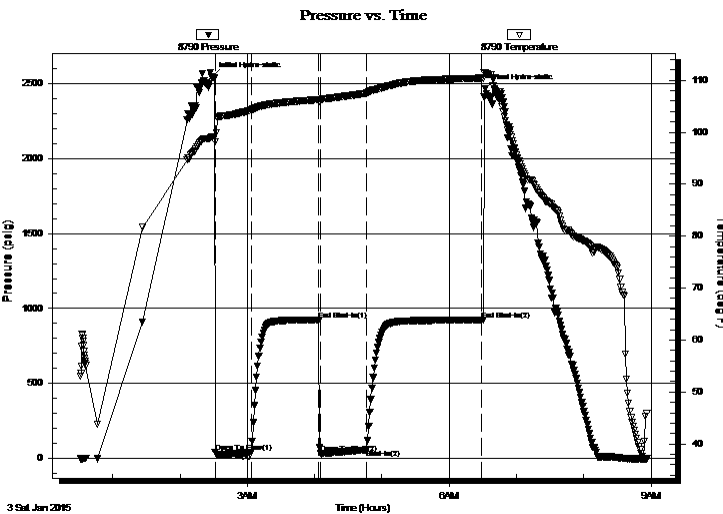
Capacity: 8000.00 psig

Last Calib.: 2015.01.03

Time On Btm: 2015.01.03 @ 02:28:43

Time Off Btm: 2015.01.03 @ 06:32:13

TEST COMMENT: IF: Strong blow . BOB @ 1min.
IS: Strong blow . BOB throughout.
FF: Strong blow . BOB immed. GTS @ 9min. Guaged gas.
FS: Strong blow . BOB throughout.



PRESSURE SUMMARY

Time (Min.)	Pressure (psig)	Temp (deg F)	Annotation
0	2550.52	99.13	Initial Hydro-static
3	41.00	98.23	Open To Flow (1)
35	39.60	104.19	Shut-In(1)
95	924.48	106.25	End Shut-In(1)
97	31.63	106.15	Open To Flow (2)
138	56.68	107.50	Shut-In(2)
241	923.53	110.41	End Shut-In(2)
244	2468.43	111.36	Final Hydro-static

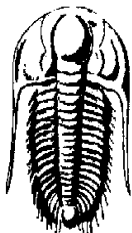
Recovery

Length (ft)	Description	Volume (bbl)
35.00	Drig Mud 100%m	0.49

Gas Rates

	Choke (inches)	Pressure (psig)	Gas Rate (Mcf/d)
First Gas Rate	0.13	7.00	8.01
Last Gas Rate	0.13	17.00	11.75
Max. Gas Rate	0.13	17.00	11.75

* Recovery from multiple tests



**TRILOBITE
TESTING, INC.**

DRILL STEM TEST REPORT

Vincent Oil Corp.

28-28s-23w. Ford Co. Ks

155 N. Market Ste. 700
Wichita, KS 67202-1821

Brown 2-28

Job Ticket: 59957

DST#: 2

ATTN: Tom Dudgeon

Test Start: 2015.01.03 @ 00:31:13

GENERAL INFORMATION:

Formation: **Penn. Lime**

Deviated: No Whipstock: 0.00 ft (KB)

Time Tool Opened: 02:31:13

Time Test Ended: 08:56:58

Interval: 5069.00 ft (KB) To 5130.00 ft (KB) (TVD)

Total Depth: 5130.00 ft (KB) (TVD)

Hole Diameter: 7.88 inches Hole Condition: Fair

Test Type: Conventional Bottom Hole (Reset)

Tester: Ryan Reynolds

Unit No: 68

Reference Elevations: 2483.00 ft (KB)

2473.00 ft (CF)

KB to GR/CF: 10.00 ft

Serial #: 8792

Press @ RunDepth: psig @ 5070.00 ft (KB)

Start Date: 2015.01.03

End Date: 2015.01.03

Capacity: 8000.00 psig

Last Calib.: 2015.01.03

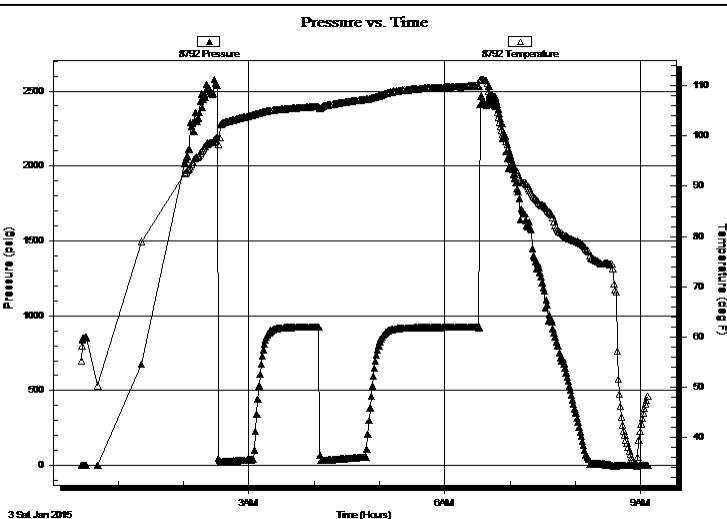
Start Time: 00:26:22

End Time: 09:07:02

Time On Btm:

Time Off Btm:

TEST COMMENT: IF: Strong blow . BOB @ 1min.
IS: Strong blow . BOB throughout.
FF: Strong blow . BOB immed. GTS @ 9min. Guaged gas.
FS: Strong blow . BOB throughout.



PRESSURE SUMMARY

Time (Min.)	Pressure (psig)	Temp (deg F)	Annotation

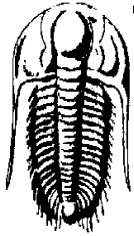
Recovery

Length (ft)	Description	Volume (bbl)
35.00	Drig Mud 100%m	0.49

* Recovery from multiple tests

Gas Rates

	Choke (inches)	Pressure (psig)	Gas Rate (Mcf/d)
First Gas Rate	0.13	7.00	8.01
Last Gas Rate	0.13	17.00	11.75
Max. Gas Rate	0.13	17.00	11.75



**TRILOBITE
TESTING, INC.**

DRILL STEM TEST REPORT

GAS RATES

Vincent Oil Corp.

28-28s-23w. Ford Co. Ks

155 N. Market Ste. 700
Wichita, KS 67202-1821

Brown 2-28

Job Ticket: 59957

DST#: 2

ATTN: Tom Dudgeon

Test Start: 2015.01.03 @ 00:31:13

Gas Rates Information

Temperature: 59 (deg F)
Relative Density: 0.65
Z Factor: 0.8

Gas Rates Table

Flow Period	Elapsed Time	Choke (inches)	Pressure (psig)	Gas Rate (Mcf/d)
2	10	0.13	7.00	8.01
2	20	0.13	11.00	9.51
2	30	0.13	13.00	10.26
2	40	0.13	17.00	11.75
2	45	0.13	17.00	11.75

