



Scale 1:240 Imperial

Well Name: Brown 2-28
Surface Location: 28-28S-23W SE SE NW SE
Bottom Location: N/A
API: 15-057-20957-00-00
License Number: 5004
Spud Date: 12/15/2014 Time: 9:15 AM
Region: SW
Drilling Completed: 1/6/2015 Time: 6:53 PM
Surface Coordinates: 1605 FSL & 1625 FEL
Bottom Hole Coordinates:
Ground Elevation: 2473.00ft
K.B. Elevation: 2483.00ft
Logged Interval: 4200.00ft To: 5300.00ft
Total Depth: 5300.00ft
Formation: MISS
Drilling Fluid Type: Chemical Mud

OPERATOR

Company: Vincent Oil Corporation
Address: 155 N. Market St.
Ste. 700
Wichita, KS 67202
Contact Geologist: Dick Jordan
Contact Phone Nbr: 316.262.3573
Well Name: Brown 2-28
Location: 28-28S-23W SE SE NW SE API: 15-057-20957-00-00
Pool: Development Field: Mulberry Creek
State: KANSAS Country: USA

CONTRACTOR

Contractor: Val Energy, Inc.
Rig #: 2
Rig Type: Rotary
Spud Date: 12/15/2014 Time: 9:15 AM
TD Date: 1/6/2015 Time: 6:53 PM
Rig Release: 1/8/2015 Time: 2:15 AM

LOGGED BY

Company: Vincent Oil Corporation
Address: 155 N. Market St.
Ste. 700
Wichita, KS 67202
Phone Nbr: 316.262.3573
Logged By: Geologist Name: Tom Dudgeon

ELEVATIONS

K.B. Elevation: 2483.00ft Ground Elevation: 2473.00ft
K.B. to Ground: 10.00ft

TOTAL DEPTH

Measurement Type:	Measurement Depth:	TVD:
Rotary Total Depth	5300.00	5302.00
Log Total Depth	5302.00	5302.00

SURFACE CO-ORDINATES

Well Type:	Vertical	Latitude:	37.5768254
Longitude:	-99.8376192		
N/S Co-ord:	1605 FSL		
E/W Co-ord:	1625 FEL		

DRILLING FLUID SUMMARY

Type	Date	From Depth	To Depth
Chemical	1/9/2015	3663.00ft	5300.00ft

OPEN HOLE LOGS

Logging Company:	Nabors Completion _Production Services Co.		
Logging Engineer:	Ian Mabb		
Truck #:	3802		
Logging Date:	1/7/2015	Time Spent:	7
# Logs Run:	4	# Logs Run Successful:	4

LOGS RUN

Tool	Logged Interval	Logged Interval	Hours	Remarks	Run #
Dual Induction	0.00ft	5302.00ft	3.00		1
Comp Den/Neu/	4150.00ft	5302.00ft	3.00		1
Micro	4150.00ft	5302.00ft	4.00		2
Sonic	0.00ft	5302.00ft	4.00		2

LOGGING OPERATION SUMMARY

Date	From	To	Description Of Operation
1/9/2015	0.00ft	5302.00ft	Logs Ran Successfully

CASING SUMMARY

	Surface	Intermediate	Main		
Bit Size	12.25 in				
Hole Size			7.88 in		
	Size	Set At	Type	# of Joints	Drilled Out At
Surf Casing	8.625 in	604 ft	21#	14	1/16/2015 6:00 AM
Int Casing					
Prod Casing	4.5 in	5295 ft	11.6#	120	

CASING SEQUENCE

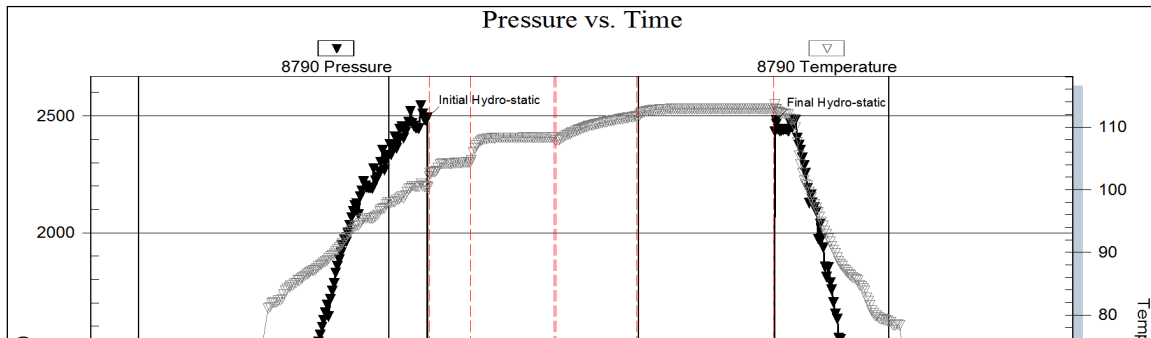
Type	Hole Size	Casing Size	At
Surface	12.25 in	8.63	604.00 ft
Production	7.88 in	4.50	5295.00 ft

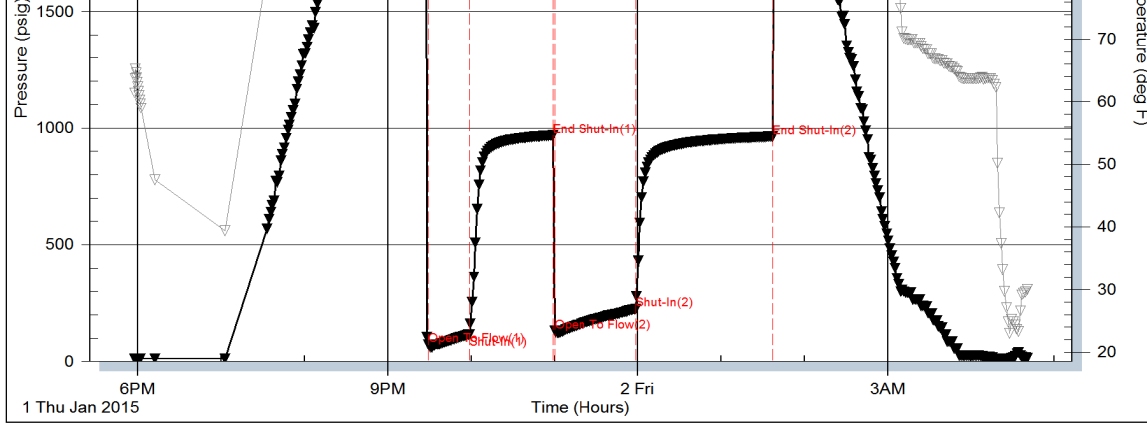
Serial #: 8790

Vincent Oil Corp.

Brown 2-28

DST Test Number: 1





Trilobite Testing, Inc

Ref. No: 59956

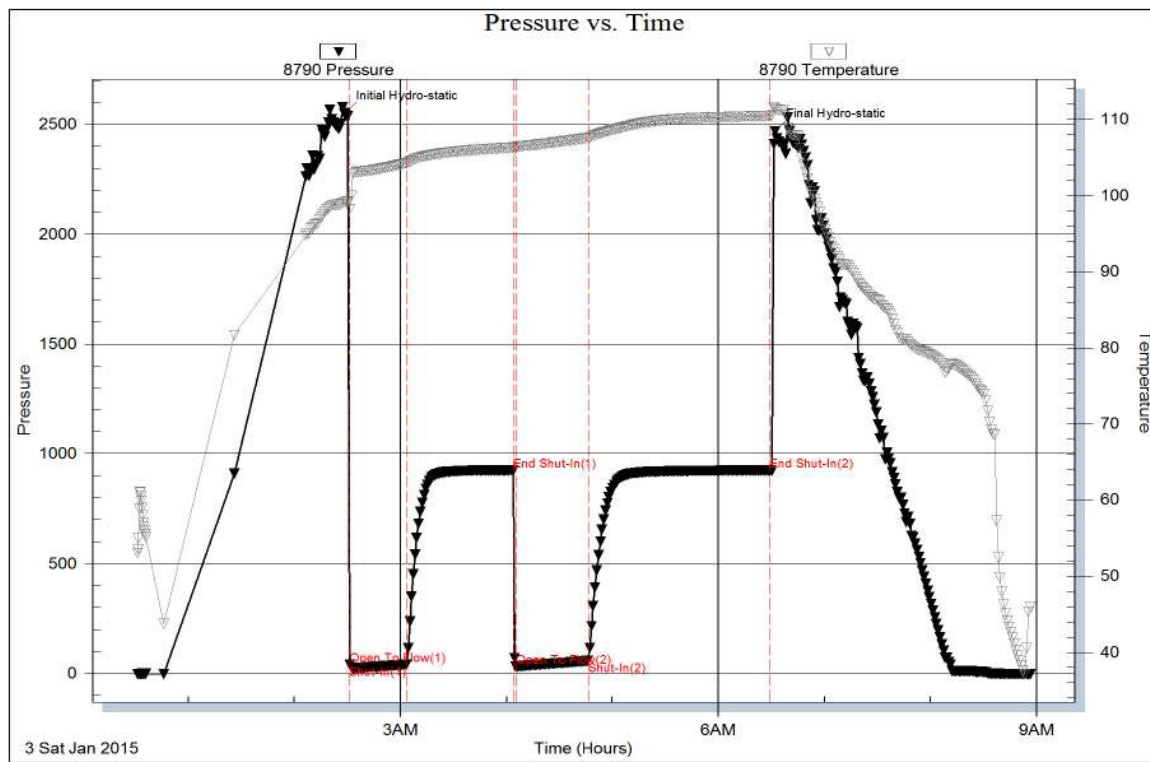
Printed: 2015.01.02 @ 06:51:19

Serial #: 8790

Inside Vincent Oil Corp.

Brown #2-28

DST Test Number: 2



Trilobite Testing, Inc

Ref. No: 59957

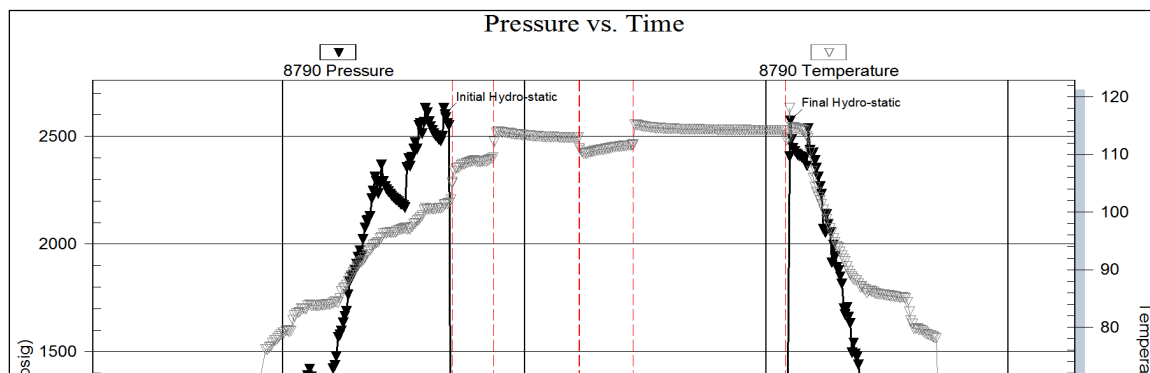
Printed: 2015.01.09 @ 08:20:24

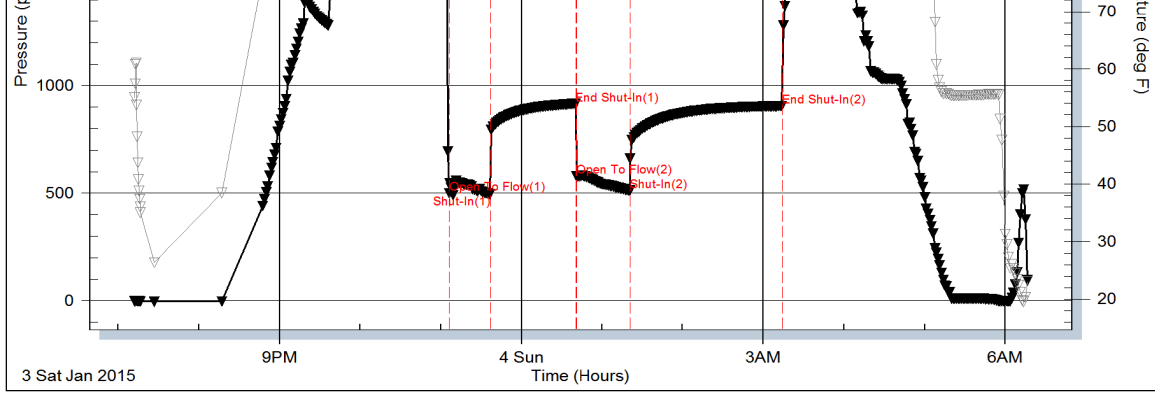
Serial #: 8790

Vincent Oil Corp.

Brown 2-28

DST Test Number: 3





Trilobite Testing, Inc

Ref. No: 59958

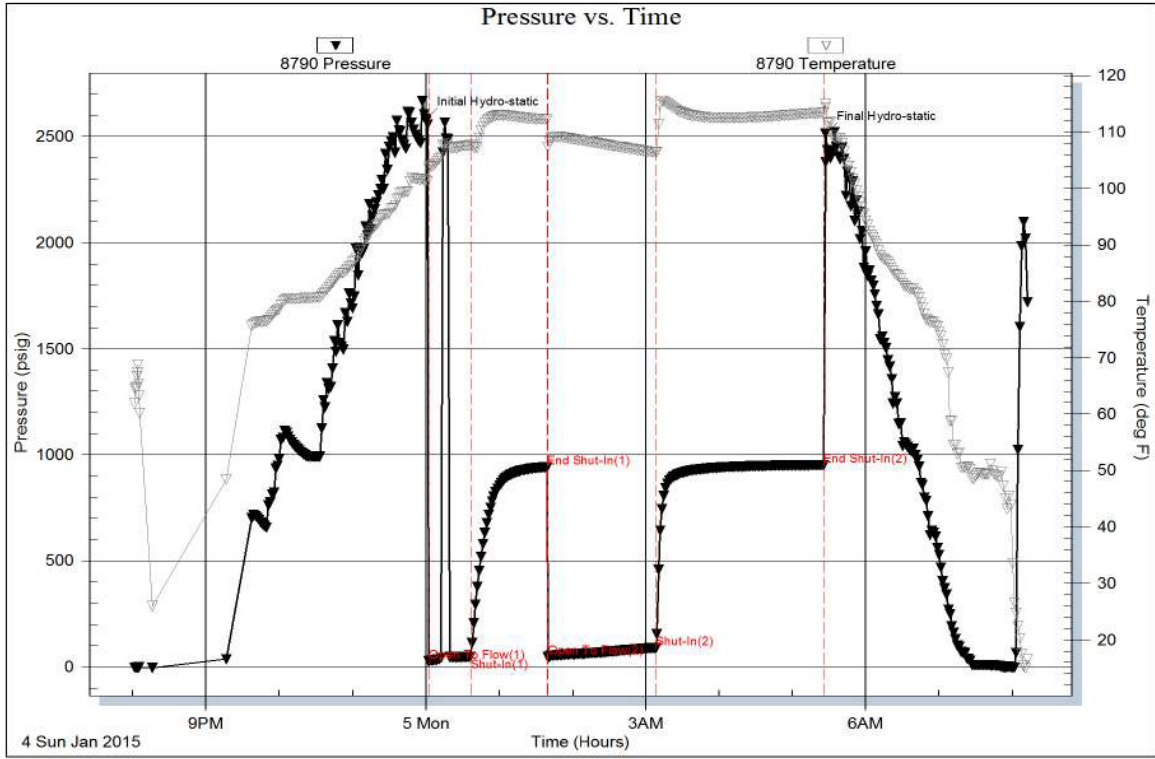
Printed: 2015.01.04 @ 06:43:40

Serial #: 8790

Vincent Oil Corp.

Brown 2-28

DST Test Number: 4



Trilobite Testing, Inc

Ref. No: 59959

Printed: 2015.01.05 @ 08:34:00

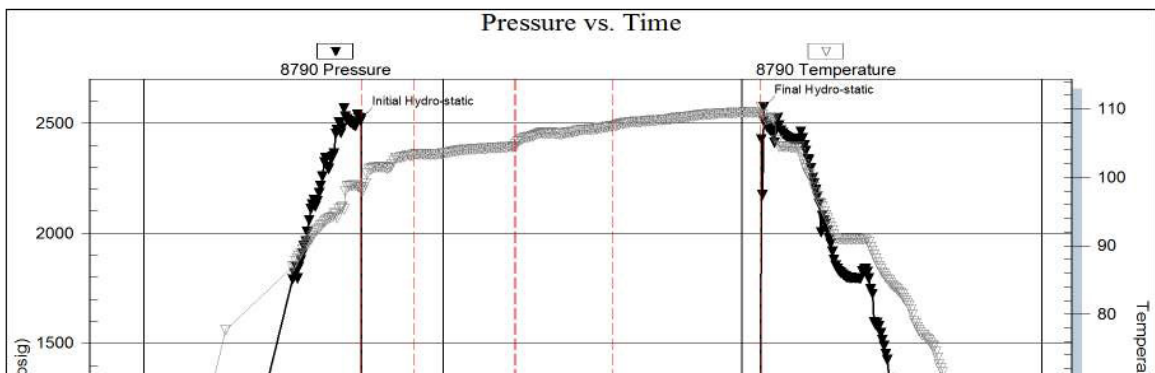
Serial #: 8790

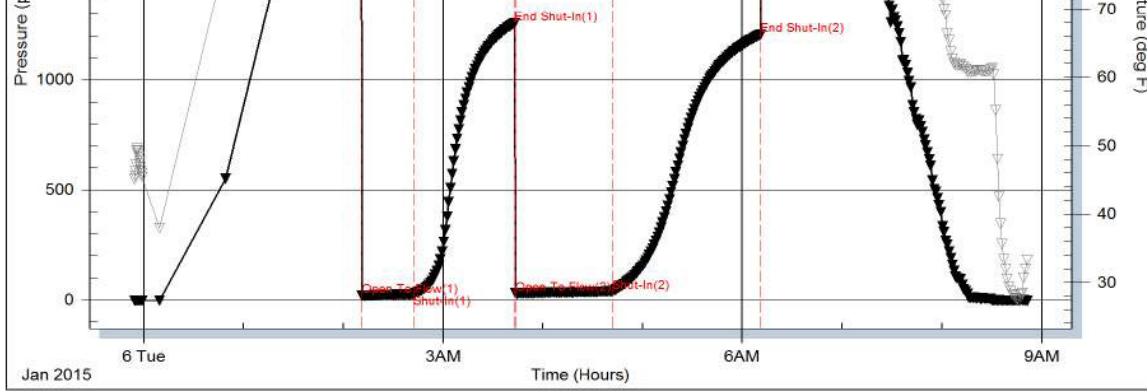
Inside

Vincent Oil Corp.

Brown 2-28

DST Test Number: 5



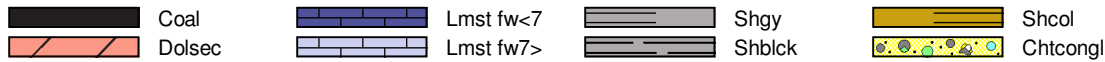


Triobite Testing, Inc

Ref. No: 59960

Printed: 2015.01.06 @ 09:16:44

ROCK TYPES



ACCESSORIES

MINERAL

- ▲ Chert, dark
- ∟ Dolomitic
- Ferruginous, grains or p
- ∩ Glauconite
- Heavy, dark minerals
- P Pyrite
- Sandy
- Silty
- △ Chert White

FOSSIL

- ⊕ Brachiopod
- ∩ Coral
- Crinoids
- F Fossils < 20%
- ⊕ Oolite
- Oolites

STRINGER

- Limestone
- Sandstone
- Shale

TEXTURE

- C Chalky
- e Earthy

DUNHAM

- MS Mudst
- PS Packst
- WS Wackstone

OTHER SYMBOLS

POROSITY TYPE

- × Intercrystalline
- φ Interoolitic
- V Vuggy
- P Pinpoint
- ∩ Moldic
- O Organic
- F Fracture
- e Earthy
- Fenestral

OIL SHOWS

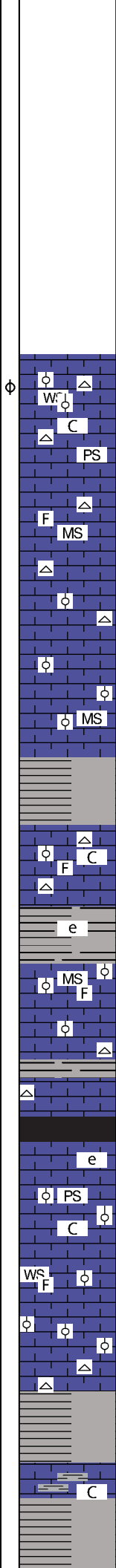
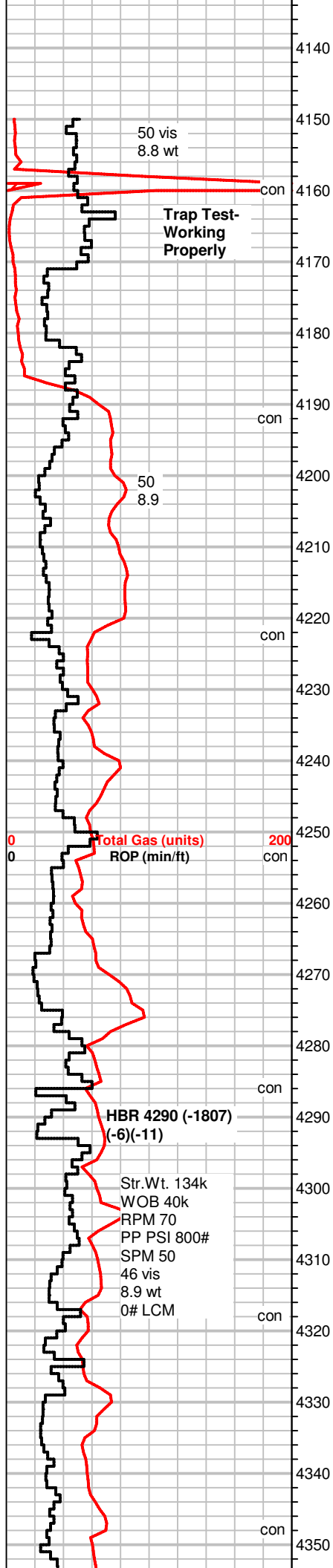
- Even Stn
- Spotted Stn 50 - 75 %
- Spotted Stn 25 - 50 %
- Spotted Stn 1 - 25 %
- Questionable Stn
- D Dead Oil Stn
- Fluorescence

INTERVALS

- Core
- DST

Printed by GEOstrip VC Striplog version 4.0.7.0 (www.grsi.ca)

Curve Track #01		Depth Intervals	Porosity Types	Interpreted Lithology	Oil Shows	Geological Descriptions	Comment
Total Gas (units)	ROP (min/ft)						
1:240 Imperial		4100					
0	0	4110					
		4120					
		4130			Pipe strap @ 3663' 2' long to board		



MS-WS, crm to tan, some lt. gray, mic-xln, hard, f-gr oolitic, fossils, Chert, white,

WS-PS, tan to crm, vf-xln, gritty txt, firm, scatt. chalky pcs, Chert, white

MS, tan to brn, mic-xln, hard to firm, scatt fossils, NS, Chert, white

MS-WS, A.A., fusulinids, Chert, white, fossilif.

SH, gray, blk
MS, crm to lt. tan, vf-xln gritty txt in part, m-gr oolitic pcs scatt.

MS, crm, rare gray pcs, mic-xln, hard, some chalky pcs, fossilif.
SH, gray

MS-WS, crm to brn, some gray, mic-xln, dense, some chalky A.A., Chert, white, gray, fossils, some SH, gray, dk. gray

SH, blk gray, MS, crm to gray, earthy, soft, chalky matrix

MS, crm to gray, mostly mic-xln, some vf-gro oolitic pcs, fossilif.

MS, crm, lt. gray, mic-xln, dense, hard, scatt fossils, blk, specs, NS, Chert, white,

SH, blk, gray

MS-WS, crm to gray, vf-xln, earthy txt, some sandy/gritty looking, hard

WS-PS, off white, crm, f-gr oolitic, chalky matrix

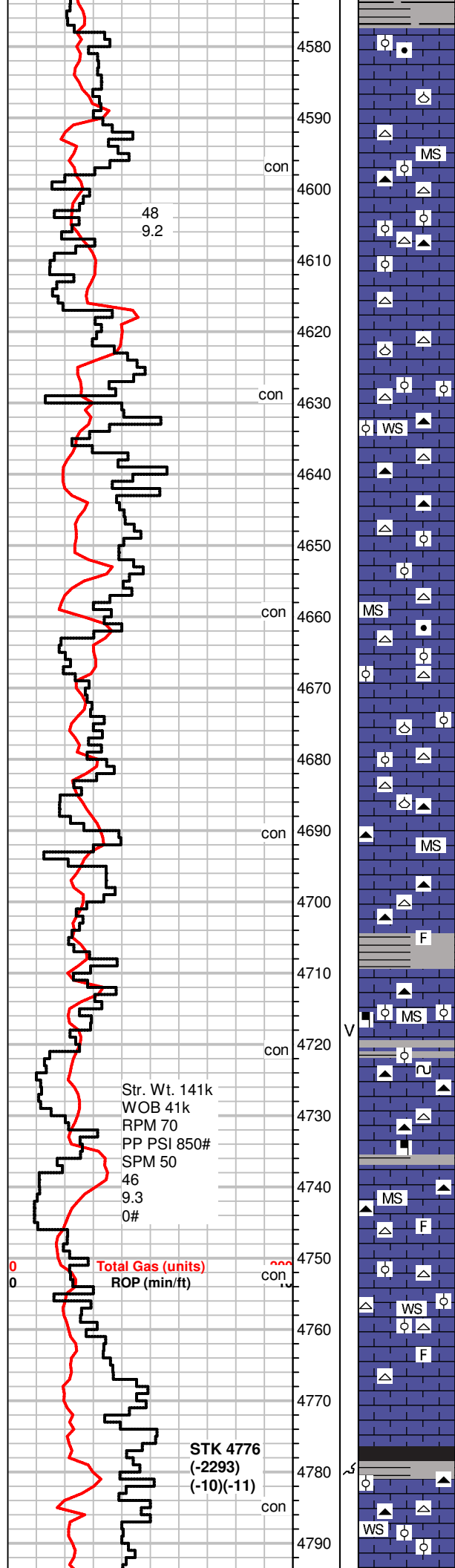
MS-WS, vrm to brn, mic to vf-xln, hard to firm, some chalky pcs, fossilif, Chert, white, fossils
SH, gray, green

MS, crm, mic-xln, v-f gr oolitic to gritty txt, hard, NS

MS, A.A., some green MS, Chert, white, blocky
some SH, gray, green

MS, brn to crm, some green mic-xln, gritty txt, chalky matrix, rare fn-gr oolitic, hard to firm, NS

SH, gray,



MS, lt. brn to gray, mic-xln, dense hard, rare mottled pcs w/ black specs, barren, NS

MS, off white to gray, some crm, mic to crip-xln, dense, fossilif. NS
Chert, tan

MS, gray to brn, mic-xln, mottled pcs scatt., rare f-n gr. oolitic pcs,
Chert, gray, white, micro oolitic
Some SH, gray

MS, crm to lt. gray, vf to mic-xln, firm, dense pcs, some chalky, fn-
gr oolitic, Chert, white, smoky gray
SH, rare blk, gray

MS, crm to tan, mic-xln, dense, fossilif.
Chert, white, weathered

+35 UGK

MS-WS, crm to off white, vf-xln, massive txt, firm, mottled pcs
scatt., Chert, blk, white, weathered, micro oolitic
SH, gray, green

MS, crm to tan, chalky to mic-xln, scatt blk specs in tan pcs,
Chert, white, blk.
SH, gray

MS-WS, crm to lt. brn, mic-xln, m-gr oolitic pcs scatt, firm, fossilif.
Chert, white, tan

MS, crm to off white, mic-xln, dense, some WS, gray, mottled, blk
specs, silty, Chert, white, fossilif

MS-WS, A.A., calcite on edges, Chert white, micro oolitic, fossilif.
SH, gray, green

WS, crm to brn, f-xln, dense, fossilif, m-gr oolitic, NS
Chert, white

MS, crm to gray, mic-xln, hard, dense, rare calcite on edge, Chert,
white, blk, fossilif
SH, blk, gray, green

MS, crm to brn, f to mic-xln, hard, dense, fractures, mineral fluor,
NS, Chert, brn, fossilif.

MS, crm to off white, some lt. gray, f-xln, firm to hard, fossil frgmts,
rare f-gr oolitic pcs, Chert, tan
SH, gray

MS, crm, lt. gray, to tan, f-xln, chalky to dense, silty, black specs,
rare glauc, scatt sub oolitic tan pcs, fossilif.
Chert, blk, tan, fossilif., vuggy por., NS

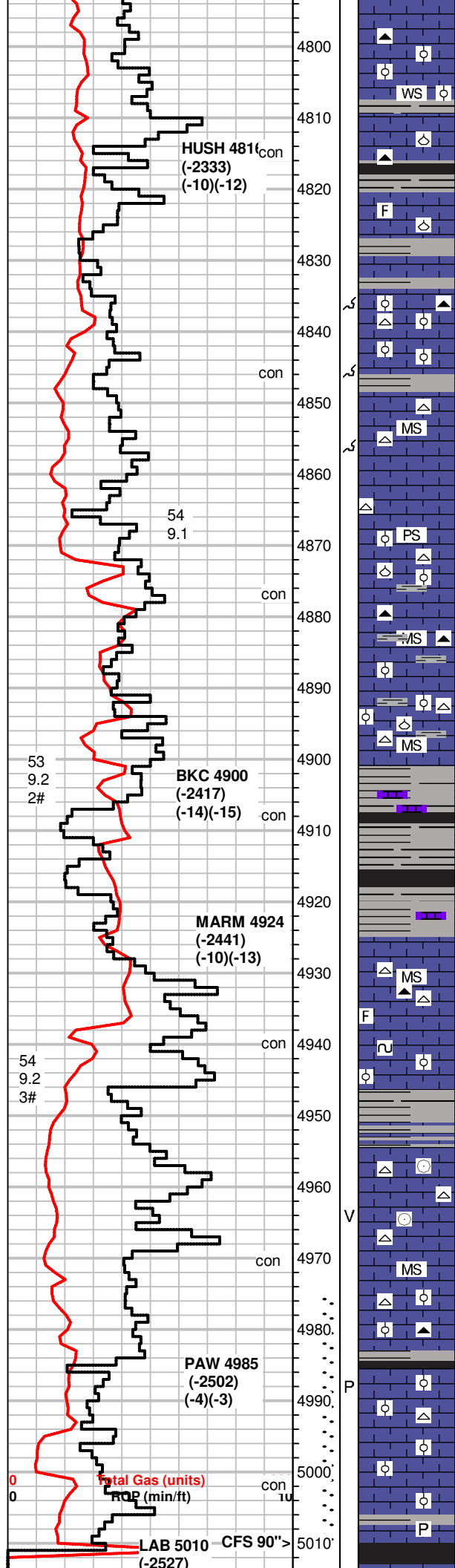
MS, off white to lt. gray, chalky to dense matrix, mic-xln, scatt
fossils, rare mottled pcs, no vis por., Chert, blk
rare SH, gray

MS, A.A., soft to firm pcs, fossilif, Chert, tan, smoky gray

WS, lt. gray to crm, off white, m-gr oolitic, dense, calcite x-tals, rare
mineral fluor, NS, Chert, white, fossilif.
rare SH, gray

SH, gray, green
MS-WS, crm to gray, mic-xln, oomoldic/oolitic m-gr pcs, firm to
hard, dense, Chert, brn

MS-WS, crm to lt. brn, A.A., some chalky pcs, scatt dark f to m-gr
oids in dense matrix, Chert, tan



No Sample

MS-WS, off white, lt. gray to tan, vf-xln, oolitic pcs, m-gr ooids, hard, dense pcs
SH, gray green

MS, lt. gray, mic-xln, dense, scatt oolitic pcs, A.A., rare calcite on edges, Chert, tan, white, fossilif.
some SH, gray, silty

MS, tan to off white, chalky txt in part, firm to soft, scatt fossils, gritty pcs, dull fluor, NS
SH, blk, gray, green

MS, A.A., some lt. gray, mic-xln, dense, rare m-gr oolitic pcs
Chert, white, blocky

MS, crm to lt. gray, mic-xln, firm, dense pcs, rare moldic pcs, calcite
SH, gray

MS, A.A., Chert, white, fossilif.

MS, gray, crm, some brn, mic to vf-xln, shaly, firm to hard, silky luster, some SH, gray

WS-PS, crm, mic-xln dense, m-gr deformed ooids, fossilif pcs, Chert, tan, white, fossilif, spicules

MS, crm to brn, some gray, vf to mic-xln, earthy in part, hard pcs., fossilif., Chert, brn,
SH, gray green

scatt SH, blk, gray, green, WS-PS, crm to gray, mic-xln, oolitic, crinoids, fossilif. dense, Chert, white, brn

MS-WS, crm to gray, f to mic-xln, firm, some pcs sub oolitic, mottled, NS, Chert, white, black
SH, gray

Sh, gray,blk,

SH, blk, gray, green, MS, tan to gray, mic-xln, dense, scatt fossilif pcs, some m-gr oolitic

SH, gray, green
MS, crm to tan, chalky matrix in part, some pcs vf-xln, hard, gritty txt, Chert, tan, white, blk, fossilif.

MS, crm, mic-xln, firm to hard, rare glauc specs, some pcs chalky, rare m-gr oolitic pcs, rare mineral fluor, NS
SH, gray, green

MS, crm to brn, f-xln, dense, scatt mottled pcs, rare fossils, rare Chert, white

MS-WS, A.A., inc in fossilif pcs, some SH, gray, dk. gray

MS, crm to brn, mic-xln, scatt f-gr oolitic pcs, dense, NS
SH, gray

MS, crm to brn, gray, A.A., hard dense, sub oolitic in part, Chert, blk, spicules
SH, gray, dk. gray, green, waxy

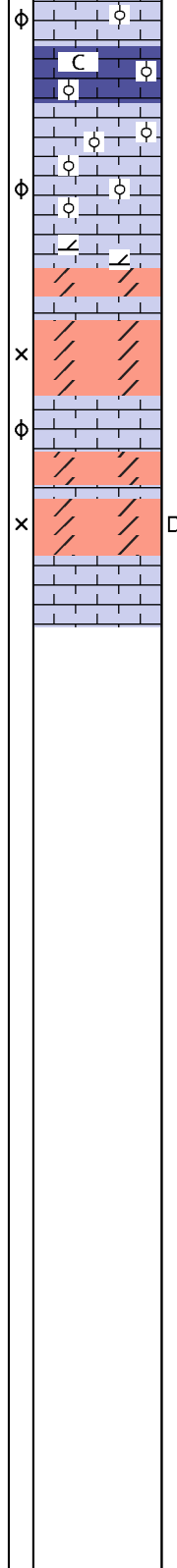
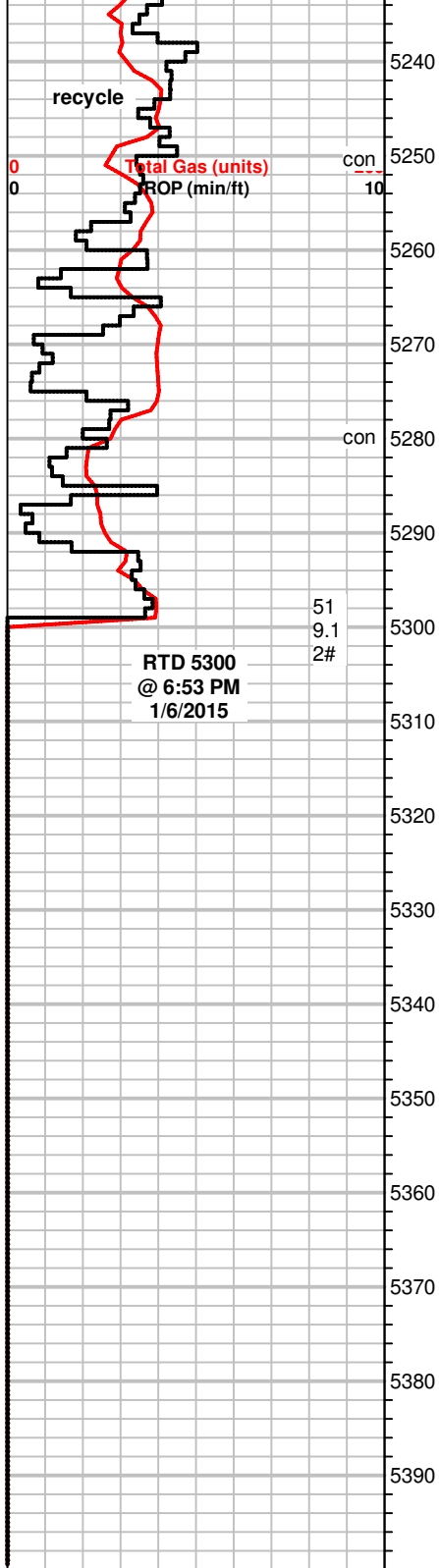
MS, crm to tan, chalky in part, oolitic, f-gr ooids, hard, Chert, white, gray

MS, crm to brn, vf-xln, chalky matrix, f-gr oolitic in part, firm, good odor in 30&60" sample, no free oil, rare bright fluor, rare wormy stn (1 pc), no cut from any samples, lt. edge stn dry.

SH, blk, dk. gray, gas bubbles, pyrite

DST #1 4975-5010
30-60-60-90
SB BOB/1"
BB BOB/30" GTS/45"
SB BOB/immed
Ga. Gas 1/8 in choke
6.9 MCF/10"
7.64 MCF/20"
8.38 MCF/30"
8.76 MCF/40"
9.13 MCF/50"
9.51 MCF/60"
BB SB throughout
Rec: 450' Fluid Total
190' CO
135' GMCO
(40g 25o 35m)
125' GMWCO
(30g 45o 15w 10m)
IH 2491#
IF 71-116#
ISIP 968#
FF 132-225#
FSIP 963#
FH 2481#
BHT 113°F
Gravity 41 API
Rw .32 @ 30°F
CI 56,000 ppm

+15 UGK



fossilif. dull fluor, NS

MS-WS, crm to off white, some lt. tan, mic-xln to f-xln, m-gr suboolitic pcs, firm, chalky matrix on some pcs, Chert, white, NS

MS-WS A.A., NS

MS-PS, crm to tan, scatt off white and brn inc, w/ depth, f-xln sub oolitic, m-gr ooids, chalky in part, hard, rare Chert, white scatt limey Dolo, brn, m-xln, sucrosic to sandy, mineral fluor, no stn, no cut, no odor

Dolo, crm to brn, f-xln, fn sucrosic txt, firm, mineral fluor, NS

WS-PS, tan to lt. brn, f-xln, m-gr oolitic, firm to hard, scatt chalky pcs, scatt tan pcs, dense, rare Chert, white

Dolo, gray to brn, f-sugary sucrosic txt, firm to soft, rare dense pcs, dead wormy stn, mineral fluor, no cut, no odor, NS

WS-PS, scatt MS, brn to tan, f-xln, dense, hard, m-gr oolitic to sub oolitic in part, chalky pcs common, Chert, white

DST #4 5166-5180
30-60-90-120
NB flush tool @ 10", SB BOB/15"
BB SB BOB, NB/55"
BOB/immed GTS/42"
Gauged 1/8" choke
10.63 MCF/50"
12.13 MCF/60"
13.25 MCF/70"
14.37 MCF/80"
15.50 MCF/90"
NBB
Rec: 125' MUD
IH 2581#
IF 27-48#
ISIP 941#
FF 47-90#
FSIP 950#
FH 2513#
Temp 114°F

DST #5 5182-5208
30-60-60-90
WB surf-1"
NBB
FB surf-7"
NBB
Rec: 120' GIP
60' SGOCM (4g, 1o, 95m)
IH 2520#
IF 19-27#
ISIP 1258#
FF 29-38#
FSIP 1205#
FH 2572#
Temp 109°F