



**TRILOBITE TESTING, INC**

# DRILL STEM TEST REPORT

Shelby Resources L.L.C

**3-22s-16w Pawnee**

445 Union Blvd Suite 208 Lakewood CO 80228

**Arkansas River Unit**

ATTN: Jeremy Schwartz

Job Ticket: 61894

**DST#: 1**

Test Start: 2014.12.12 @ 14:10:00

## GENERAL INFORMATION:

Formation: **Conglomerate**

Deviated: No Whipstock: ft (KB)

Time Tool Opened: 15:58:00

Time Test Ended: 22:57:30

Test Type: Conventional Bottom Hole (Initial)

Tester: Jared Scheck

Unit No: S5-Great Bend-50

**Interval: 3825.00 ft (KB) To 3864.00 ft (KB) (TVD)**

Reference Elevations: 1999.00 ft (KB)

Total Depth: 3864.00 ft (KB) (TVD)

1986.00 ft (CF)

Hole Diameter: 7.88 inches Hole Condition: Fair

KB to GR/CF: 13.00 ft

**Serial #: 6999 Outside**

Press@RunDepth: 147.02 psig @ 3861.00 ft (KB)

Capacity: 5000.00 psig

Start Date: 2014.12.12 End Date: 2014.12.12

Last Calib.: 2014.12.13

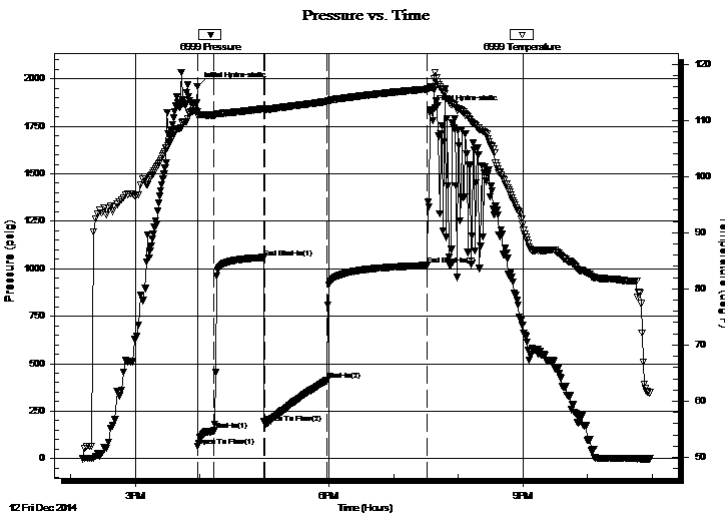
Start Time: 14:11:00 End Time: 22:57:30

Time On Btm: 2014.12.12 @ 15:57:30

Time Off Btm: 2014.12.12 @ 19:34:00

**TEST COMMENT:** IFP-15 Minutes-Strong blow built bottom of bucket in 3 minutes  
 ISIP-45 Minutes-Blow back 8 inches  
 FFP-60 Minutes-Strong blow built bottom of bucket in 3 minutes  
 FSIP-90 Minutes-Blow back bottom of bucket

## PRESSURE SUMMARY



Time (Min.)	Pressure (psig)	Temp (deg F)	Annotation
0	1958.76	111.50	Initial Hydro-static
1	63.82	110.78	Open To Flow (1)
16	147.02	110.92	Shut-In(1)
62	1059.45	112.06	End Shut-In(1)
63	187.09	111.88	Open To Flow (2)
121	411.67	113.35	Shut-In(2)
213	1017.79	115.53	End Shut-In(2)
217	1839.23	115.89	Final Hydro-static

## Recovery

Length (ft)	Description	Volume (bbl)
330.00	Oil 90% 10% mud	1.62
720.00	Gas oil 10% gas 90% Oil	10.10
0.00	gas in pipe 3525	0.00

## Gas Rates

	Choke (inches)	Pressure (psig)	Gas Rate (Mcf/d)



**TRILOBITE  
TESTING, INC**

# DRILL STEM TEST REPORT

**FLUID SUMMARY**

Shelby Resources L.L.C

**3-22s-16w Pawnee**

445 Union Blvd Suite 208 Lakewood CO 80228

**Arkansas River Unit**

Job Ticket: 61894

**DST#: 1**

ATTN: Jeremy Schwartz

Test Start: 2014.12.12 @ 14:10:00

## Mud and Cushion Information

Mud Type: Gel Chem

Cushion Type:

Oil API:

43 deg API

Mud Weight: 10.00 lb/gal

Cushion Length:

ft

Water Salinity:

ppm

Viscosity: 60.00 sec/qt

Cushion Volume:

bbbl

Water Loss: 7.98 in<sup>3</sup>

Gas Cushion Type:

Resistivity: ohm.m

Gas Cushion Pressure:

psig

Salinity: 5400.00 ppm

Filter Cake: 1.00 inches

## Recovery Information

Recovery Table

Length ft	Description	Volume bbbl
330.00	Oil 90% 10% mud	1.623
720.00	Gas oil 10% gas 90% Oil	10.100
0.00	gas in pipe 3525	0.000

Total Length: 1050.00 ft      Total Volume: 11.723 bbl

Num Fluid Samples: 0

Num Gas Bombs: 0

Serial #:

Laboratory Name:

Laboratory Location:

Recovery Comments: Max gas gauged 9,200 gas gauge leveled out at 5,320

