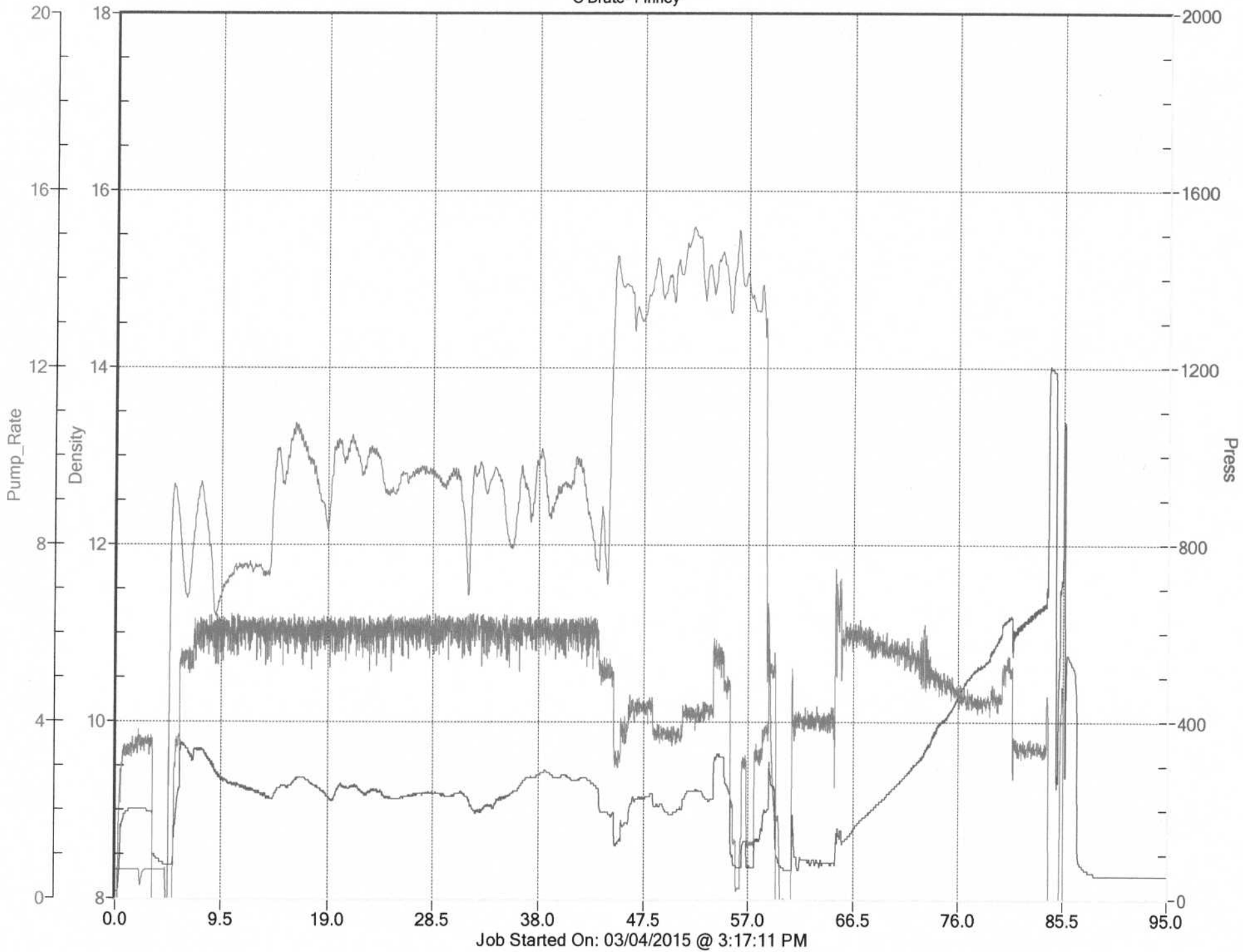


American Warrior

O'Brate- Finney



Job Started On: 03/04/2015 @ 3:17:11 PM



CHARGE TO: American Warrior
 ADDRESS:
 CITY, STATE, ZIP CODE:

TICKET 28243

PAGE 1 OF 2

SERVICE LOCATIONS: 1. New City KS
 WELL/PROJECT NO. 7-5 LEASE obrate-Finney COUNTY/PARISH Finney STATE KS CITY Garden City DATE 12 MAR 15 OWNER
 2. TICKET TYPE SERVICE CONTRACTOR DUKE RIG NAME/NO. 10 SHIPPED VIA CT DELIVERED TO location ORDER NO.
 3. WELL TYPE oil WELL CATEGORY Development JOB PURPOSE cement log string WELL PERMIT NO. WELL LOCATION 5-23-32
 4. REFERRAL LOCATION INVOICE INSTRUCTIONS

PRICE REFERENCE	SECONDARY REFERENCE/ PART NUMBER	ACCOUNTING			DESCRIPTION	QTY.		UNIT PRICE		AMOUNT	
		LOC	ACCT	DF		QTY.	U/M	QTY.	U/M		
575		1			MILEAGE	90	mi	5	00	450.00	
578		1			Pump Charge	1	ea	1250	00	1250.00	
402		1			Centralizer	5 1/2	in	9	ea	60.00	540.00
403		1			Cement Basket	5 1/2	in	1	ea	250.00	250.00
406		1			Latch down plug & baffle	5 1/2	in	1	ea	225.00	225.00
407		1			Insert flat shoe w/ AUTO FILL	5 1/2	in	1	ea	300.00	300.00

LEGAL TERMS: Customer hereby acknowledges and agrees to the terms and conditions on the reverse side hereof which include, but are not limited to, **PAYMENT, RELEASE, INDEMNITY, and LIMITED WARRANTY** provisions.

MUST BE SIGNED BY CUSTOMER OR CUSTOMER'S AGENT PRIOR TO START OF WORK OR DELIVERY OF GOODS

X
 DATE SIGNED TIME SIGNED A.M. P.M.
12/10

REMIT PAYMENT TO:
 SWIFT SERVICES, INC.
 P.O. BOX 466
 NESS CITY, KS 67560
 785-798-2300

SURVEY	AGREE	UN-DECIDED	DIS-AGREE		AMOUNT
OUR EQUIPMENT PERFORMED WITHOUT BREAKDOWN?				PAGE TOTAL 1	3015.00
WE UNDERSTOOD AND MET YOUR NEEDS?				2	5316.22
OUR SERVICE WAS PERFORMED WITHOUT DELAY?				subtotal	8331.22
WE OPERATED THE EQUIPMENT AND PERFORMED JOB CALCULATIONS SATISFACTORILY?				Finney TAX 7.3%	419.77
ARE YOU SATISFIED WITH OUR SERVICE? <input type="checkbox"/> YES <input type="checkbox"/> NO				TOTAL	8750.99
<input type="checkbox"/> CUSTOMER DID NOT WISH TO RESPOND					

CUSTOMER ACCEPTANCE OF MATERIALS AND SERVICES The customer hereby acknowledges receipt of the materials and services listed on this ticket.

SWIFT OPERATOR Agill APPROVAL

Thank You!



PO Box 466
Ness City, KS 67560
Off: 785-798-2300

TICKET CONTINUATION

TICKET No. 28243

CUSTOMER American Warrior WELL O Brate-Finney 7-5 DATE 12 MAR 15 PAGE 2 OF 2

PRICE REFERENCE	SECONDARY REFERENCE/ PART NUMBER	ACCOUNTING			TIME	DESCRIPTION	QTY		U/M		UNIT PRICE	AMOUNT
		LOC	ACCT	DF			QTY	U/M	QTY	U/M		
325		1				Standard cement (for ct-2)	175	sk			12.25	2143.75
284		1				calseal	800	lb	8	sk	30.00	240.00
283		1				salt	900	lb			0.20	180.00
292		1				halad-322	125	lb			8.00	1000.00
276		1				flocle	50	lb			2.25	112.50
290		1				D-AIR	2	gal			42.00	84.00
281		1				mud flush	500	gal			1.25	625.00
221		1				KCh liquid	2	gal			25.00	50.00
581						SERVICE CHARGE	175				1.50	262.50
583						MILEAGE CHARGE	18325		90		0.75	618.47
						TOTAL WEIGHT	18325					
						LOADED MILES		90				
						TON MILES			824.63			

CONTINUATION TOTAL 5316.22

JOB LOG

SWIFT Services, Inc.

DATE 12 MAR 15 PAGE NO.

CUSTOMER American Warrior WELL NO. 7-5 LEASE OBRATE - Finney JOB TYPE cement long string TICKET NO. 28243

CHART NO.	TIME	RATE (BPM)	VOLUME (BBL) (GAL)	PUMPS		PRESSURE (PSI)		DESCRIPTION OF OPERATION AND MATERIALS
				T	C	TUBING	CASING	
								175sk EA-2 cement w/ 1/4" floccle 5 1/2" x 15.5" casing 116 joints TD=4910 set @ 4877' shoe jt 21' Basket # 10 Cement car 1, 3, 5, 7, 9, 11, 13, 15, 17
	1500							on loc TRK 114
	1525							start 5 1/2" x 15.5 casing in well
	1725							Drop ball - circulate
	1815	4	12				200	Pump 500 gal mud flush
		4	20				200	Pump 20 bbl KCL flush
	1820		7					Plug RH - MH 30sk - 20sk
	1825	3 3/4	35				200	mix EA-2 cement 125sk @ 15.3 ppg
								Drop latch down plug wash out pup & line
	1842	6					200	Displace plug
		6	93				500	
		5 1/2	105				400	
	1900	5 1/2	116				1500	Land plug
	1903							Release pressure to truck - dried up
	1910							wash truck
								back up
	1940							job complete
								Thinks Blaine, Flint & more