



1000 Ledge Lane Drive
 Conway, Arkansas 72034
 501.328.3316 f 501.328.3325 f
 www.craftontull.com

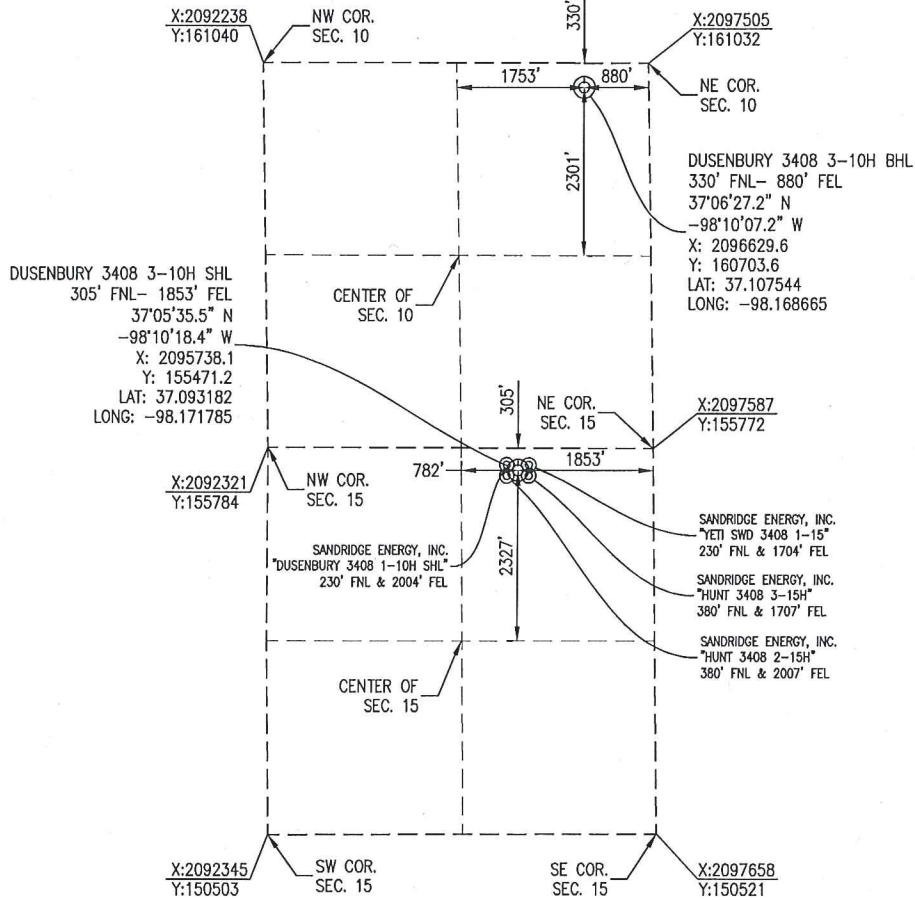
Crafton Tull
 SURVEYING

HARPER COUNTY, KANSAS

305' FNL- 1853' FEL SECTION 15 TOWNSHIP 34S RANGE 08W 6TH P.M.



BOTTOM HOLE INFORMATION PROVIDED BY OPERATOR LISTED AND CORNER COORDINATES ARE TAKEN FROM POINTS SURVEYED IN THE FIELD.



OPERATOR: SANDRIDGE ENERGY, INC.

WELL NO: 3-10H

ELEVATION:
 1387' GR. AT STAKE

LEASE NAME: DUSENBURY 3408

TOPOGRAPHIC & VEGETATION: LOCATION FELL IN A FIELD

GOOD DRILL SITE: YES

REFERENCE STAKES OR ALTERNATE LOCATION STAKES SET: NONE

BEST ACCESSIBILITY TO LOCATION: NORTH LINE

DISTANCE & DIRECTION

FROM HWY JCT OR TOWN: FROM THE JCT. OF OK-2 & SW 70 AVE (±7.5 MILES WEST OF ANTHONY, KS) TRAVEL SOUTH ON SW 70 AVE FOR ±4.0 MILES TO THE NORTHEAST CORNER OF SECTION 15, T34S-R08W.

(THE FOLLOWING INFORMATION WAS GATHERED USING A GPS RECEIVER ACCURACY ±2-3 METERS)

GPS DATUM: NAD-27
 LAT: 37.093182
 LONG: -98.171785

STATE PLANE COORDINATES:
 ZONE: KS-SOUTH NAD-27
 X: 2095738.1
 Y: 155471.2

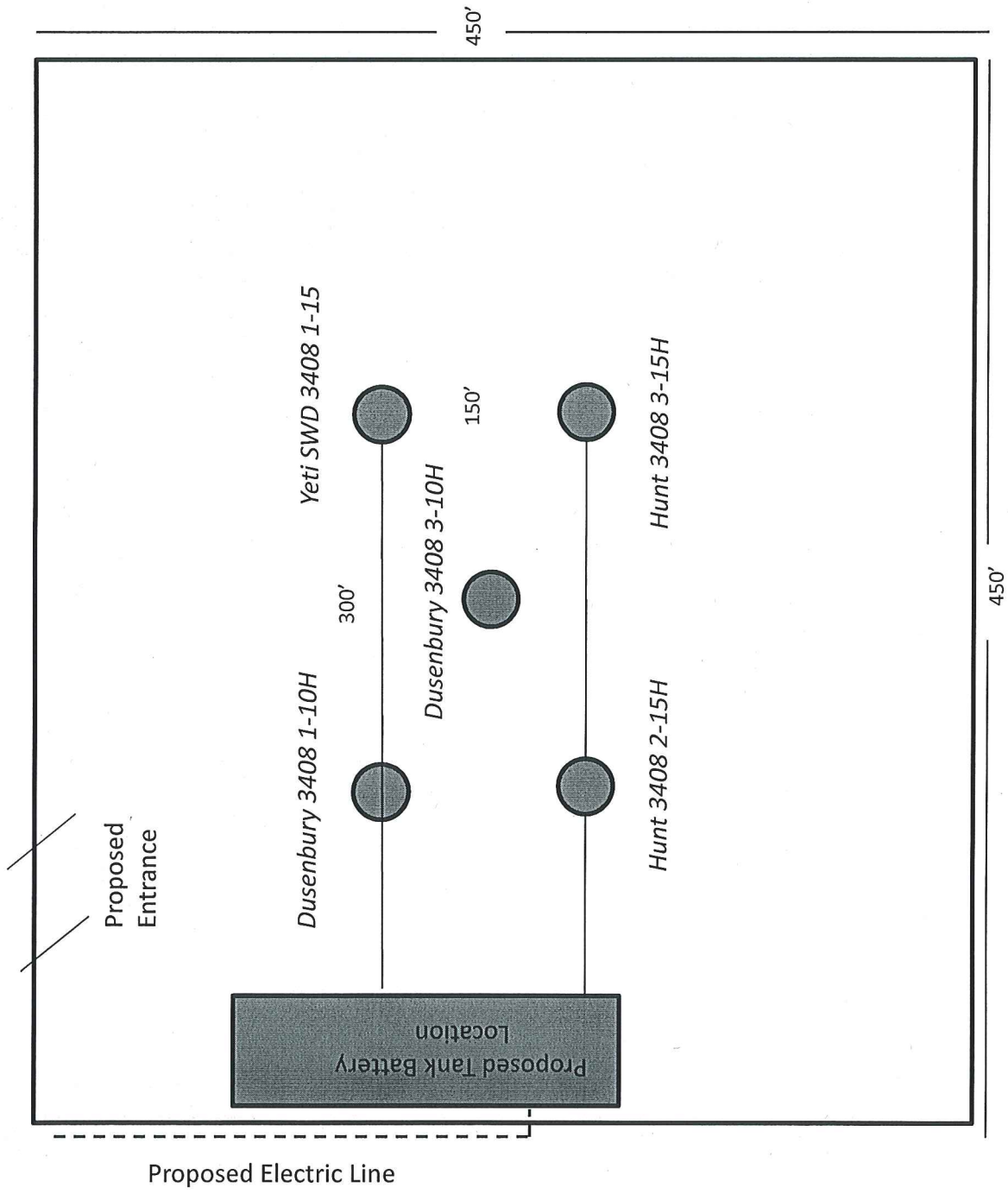
DATE STAKED: 4-10-2015

GENERAL NOTES:

THE TIES AND FOOTAGES SHOWN ON THIS PLAT ARE FROM LINES OF OCCUPATION FROM A SURVEY MADE ON THE GROUND AND / OR BEARING AND DISTANCES FROM THE GENERAL LAND OFFICE PLAT OF THE AREA SHOWN AND MAY NOT BE THE ACTUAL PROPERTY CORNERS. THIS PLAT DOES NOT REPRESENT A TRUE BOUNDARY SURVEY. DRILL SITE CONDITION DETERMINATIONS WERE MADE BY SANDRIDGE ENERGY INC. REPRESENTATIVES.



REVISION	SandRidge		
	"DUSENBURY 3408 3-10H" PART OF THE NE1/4 OF SECTION 15, T-34-S, R-08-W PROPOSED DRILL SITE HARPER COUNTY, KANSAS		
	SCALE: 1" = 2000'	PLOT DATE: 04-14-2015	DRAWN BY: JWB SHEET NO.: 1 OF 4



Proposed Entrance

Dusenbury 3408 1-10H Yeti SWD 3408 1-15

300'

Dusenbury 3408 3-10H

150'

Hunt 3408 2-15H

Hunt 3408 3-15H

Proposed Electric Line

450'

450'

Dusenbury 3408 3-10H

Harper County, KS

Unit Description:

All of 10-34S-8W

Surface Owner:

SandRidge Expl. and Prod., LLC

123 Robert S Kerr Ave

Oklahoma City, OK 73102

