

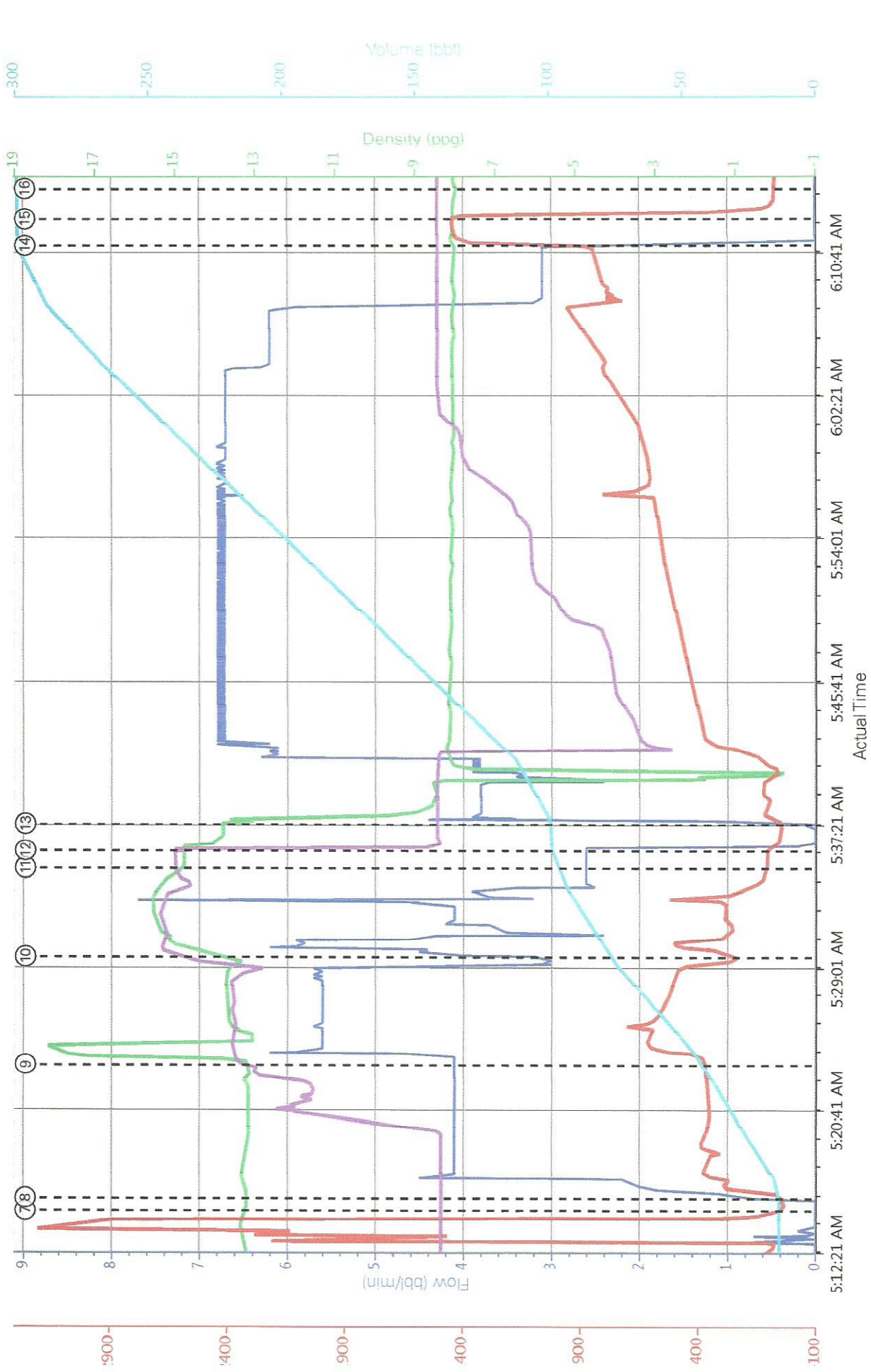
.0 Real-Time Job Summary

.1 Job Event Log

Type	Seq. No.	Activity	Graph Label	Date	Time	Source	Comb Pump Rate (bbl/min)	DH Density (ppg)	PS Pump Press (psi)	Recirc Density (ppg)	Comb Pump Total	Comments
Event	1	Arrive At Loc	Arrive At Loc	3/4/2015	15:00:00	USER						requested on loc 3/5 @ 0200 arrived early in case of bad weather
Event	2	Pre-Rig Up Safety Meeting	Pre-Rig Up Safety Meeting	3/5/2015	02:30:00	USER						discussed possible icy slick spots
Event	3	Rig-Up Equipment	Rig-Up Equipment	3/5/2015	02:40:00	USER						
Event	4	Pre-Job Safety Meeting	Pre-Job Safety Meeting	3/5/2015	04:40:00	USER	0.00	3.81	-2.00	0.00	0.0	reviewed isa discussed high pressure lines and red zone
Event	5	Prime Pumps	Prime Pumps	3/5/2015	04:48:31	COM5	0.00	3.78	-3.00	0.00	0.0	
Event	6	Test Lines	Test Lines	3/5/2015	05:07:33	COM5	0.00	3.89	3.00	8.35	11.6	low 300 psi high 3000 psi good test
Event	7	Drop Bottom Plug	Drop Bottom Plug	3/5/2015	05:15:00	USER	0.00	13.21	31.00	8.34	13.5	plug left head
Event	8	Pump Spacer 1	Pump Spacer 1	3/5/2015	05:15:45	COM5	0.80	13.20	174	8.35	13.7	10 bbls mud flush III @ 4 bpm
Event	9	Pump Lead Cement	Pump Lead Cement	3/5/2015	05:23:27	COM5	4.10	13.22	368.00	13.58	42.9	37.6 bbls scaled @ 13.6 ppg @ 5.5 bpm
Event	10	Pump Tail Cement	Pump Tail Cement	3/5/2015	05:29:51	COM5	4.10	14.01	278.00	15.62	76.4	19 bbls scaled @ 15.6 @ 4.4 bpm
Event	11	Shutdown	Shutdown	3/5/2015	05:35:00	USER	2.60	14.78	102.00	14.97	96.5	
Event	12	Drop Top Plug	Drop Top Plug	3/5/2015	05:36:00	USER	2.30	14.77	100.00	8.69	99.0	plug left head
Event	13	Pump Displacement	Pump Displacement	3/5/2015	05:37:35	COM5	0.80	13.07	860	8.44	99.2	200 bbls fresh water @ 7 bpm with 170 gone slowed rate to 3 bpm
Event	14	Bump Plug	Bump Plug	3/5/2015	06:11:18	COM5	0.00	8.03	1430	8.43	299.0	bumped @ 860 psi went up tp 1430 psi

Event 15	Check Floats	Check Floats	3/5/2015	06:12:50	USER	0.00	8.09	1361.00	8.43	299.0	floats held 1 bbl back
Event 16	End Job	End Job	3/5/2015	06:14:35	COM5	0.00	7.99	69.00	8.43	299.0	
Event 17	Pre-Rig Down Safety Meeting	Pre-Rig Down Safety Meeting	3/5/2015	06:24:00	USER	0.00	-0.13	66.00	8.42	299.0	discussed icy areas and pinch points
Event 18	Rig-Down Equipment	Rig-Down Equipment	3/5/2015	06:30:00	USER	0.00	-0.58	64.00	8.42	299.0	
Event 19	Safety Meeting- Departing Location	Safety Meeting- Departing Location	3/5/2015	07:20:00	USER						make sure to use journey management
Event 20	Depart Location	Depart Location	3/5/2015	07:30:00	USER						

TAPSTONE DUKE18-35-8 INTERMEDIATE



Comb Pump Rate (bbf/min) DH Density (ppg) PS Pump Press (psi) Recirc Density (ppg) Comb Pump Total (bbf)

- At Loc (3) Rig-Up Equipment (5) Prime Pumps (7) Drop Bottom Plug (9) Pump Lead Cement (11) Shutdown (13) Pump Displacement (15) Check Floats (17) F
- Up Safety Meeting (4) Pre-Job Safety Meeting (6) Test Lines (8) Pump Spacer 1 (10) Pump Tail Cement (12) Drop Top Plug (14) Bump Plug (16) F

Cementing Job Summary

HALIBURTON

The Road to Excellence Starts with Safety

Sold To #: 372073	Ship To #: 3645774	Quote #: 0022007149	Sales Order #: 0902182626
Customer: TAPSTONE ENERGY LLC	Customer Rep:	Well Name: DUKE 18-35-8	Well #: 1H
AP/UWI #: 15-077-22129-01	Field: UNDESIGNATED	City (SAP): WALDRON	County/Parish: HARPER
State: KANSAS	Legal Description: NW NE NE NE-7-35S-8W-200FNL-460FEL	Contractor: NOMAC	Rig/Platform Name/Num: NOMAC 07
Job BOM: 7522	Well Type: HORIZONTAL OIL	Sales Person: HALAMERICA\HX25353	Svc Supervisor: Ronald Youngblood

Formation Name	Bottom	BHST	Job Depth TVD	4795	Water Depth	WK Ht Above Floor	4
Formation Depth (MD)	Top	Bottom	Job Depth TVD	4795	Perforation Depth (MD)	From	To

Description	New / Used	Size	ID	Weight	Grade	Top MD	Bottom MD	Top TVD	Bottom TVD
Casing	3	9.625	8.921	36	LTC	0	800	0	4795
Casing	3	7	6.276	26	LTC	0	5311	0	4795
Open Hole Section			8.75			800	5312	800	4795

Tools and Accessories									
Type	Size	Qty	Make	Depth	Type	Size	Qty	Make	
Guide Shoe	7	7	5272		Top Plug	7	1	HES	
Float Shoe	7	7	5311		Bottom Plug	7	1	HES	
Float Collar	7	7	5227		SSR plug set	7		HES	
Insert Float	7	7			Plug Container	7		HES	
Stage Tool	7	7			Centralizers	7		HES	

Miscellaneous Materials									
Gelling Agt	Conc	Surfactant	Inhibitor	Conc	Acid Type	Sand Type	Qty	Conc	
Treatment Fid									

Fluid Data									
Stage/Plug #: 1	Fluid Name	Qty	Qty Uom	Mixing	Yield	Mix	Rate	Total Mix	
	Mud Flush III	10	bbl	8.33			5	Gal	
	FRESH WATER								

Fluid #	Stage Type	Fluid Name	Qty	Qty Uom	Mixing	Yield	Mix	Rate	Total Mix
1	Mud Flush III (Liquid)	Mud Flush III	10	bbl	8.33			5	Gal

Fluid #	Stage Type	Fluid Name	Qty	Qty UOM	Mixing Density lbm/gal	Yield ft ³ /sack	Mix Fluid Gal	Rate bbl/mi	Total Mix Fluid Gal
2	Lead Cement	ECONOCEM (TM) SYSTEM	140	sack	13.6	1.506		5	7.3
0.40 % HALAD(R)-9, 50 LB (100001617)									
Fluid #	Stage Type	Fluid Name	Qty	Qty UOM	Mixing Density lbm/gal	Yield ft ³ /sack	Mix Fluid Gal	Rate bbl/mi	Total Mix Fluid Gal
3	Tail Cement	HALCEM (TM) SYSTEM	90	sack	15.6	1.19		5	5.36
0.40 % HALAD(R)-9, 50 LB (100001617)									
Fluid #	Stage Type	Fluid Name	Qty	Qty UOM	Mixing Density lbm/gal	Yield ft ³ /sack	Mix Fluid Gal	Rate bbl/mi	Total Mix Fluid Gal
4	Displacement	Displacement	200.4	bbl	8.33			5	
Cement Left In Pipe Amount 84 ft Reason Shoe Joint Mix Water: pH 7 Mix Water: <1000 Chloride: Cement Temperature: 44 Plug Displaced by: Fresh Water Disp. Temperature: Plug Bumped? Yes Bump Pressure: 740 Returns Density: Cement Returns: 0 Returns Temperature: Comment Top of Tail 4721 ft - Top of Lead 3318 ft Top of Mud Flush 2945 ft									



Summary Report

Sales Order #: 0902182626
WO #: 0902182626
PO/AFE #: NA

Crew: _____
Job Start Date: 3/4/2015

Customer:	TAPSTONE ENERGY LLC	Field:	UNDESIGNATED	Job Type:	CMT INTERMEDIATE
UWI / API Number:	15-077-22129-01	County/Parish:	HARPER	Service Supervisor:	Ronald Youngblood
Well Name:	DUKE 18-35-8	State:	KANSAS	Cust Rep Name:	
Well No:	1H	Latitude:	37.020863	Cust Rep Phone #:	
		Longitude:	-98.220192		
		Sect / Twn / Rng:	7/35/8		

Remarks:

The Information Stated Herein Is Correct

Customer Representative Printed Name

Customer Representative Signature

Date