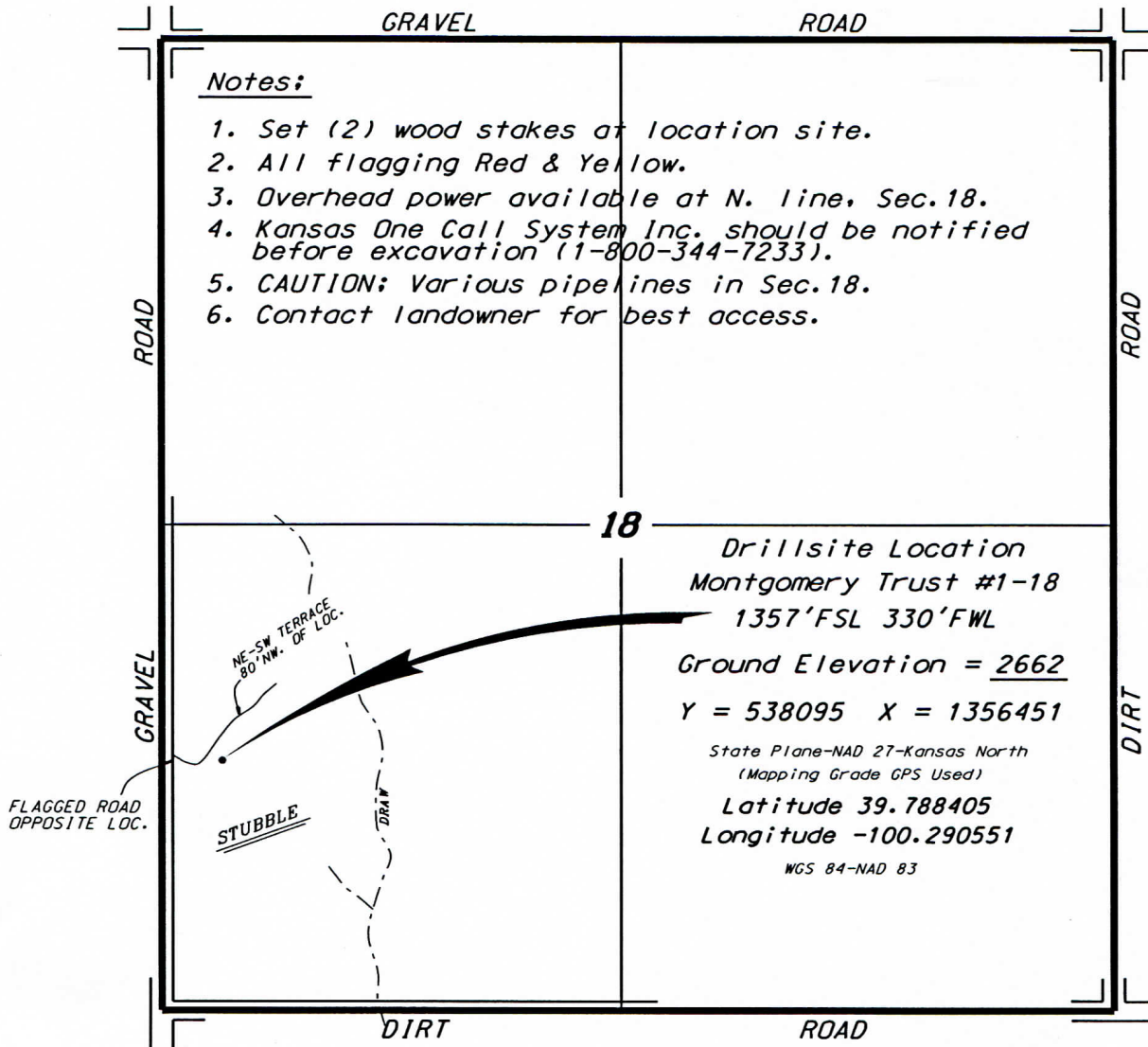


**WILD COLT OIL & GAS, LLC  
MONTGOMERY LEASE  
SW. 1/4, SECTION 18, T3S, R26W  
DECATUR COUNTY, KANSAS**

**Directions:**

From the intersection of Highway 83 and Highway 36 (in Oberlin, Kansas) go 13.0 miles East on Highway 36, then go 2.0 miles South to the NW. corner of Section 18, then go 0.74 miles South to a flag on the east edge of road, then go 0.06 miles East to location.

\*Ingress and egress to location as shown on this plat is per usage only and may not be legally opened for public use. Contact landowner, tenant and county road department for access.



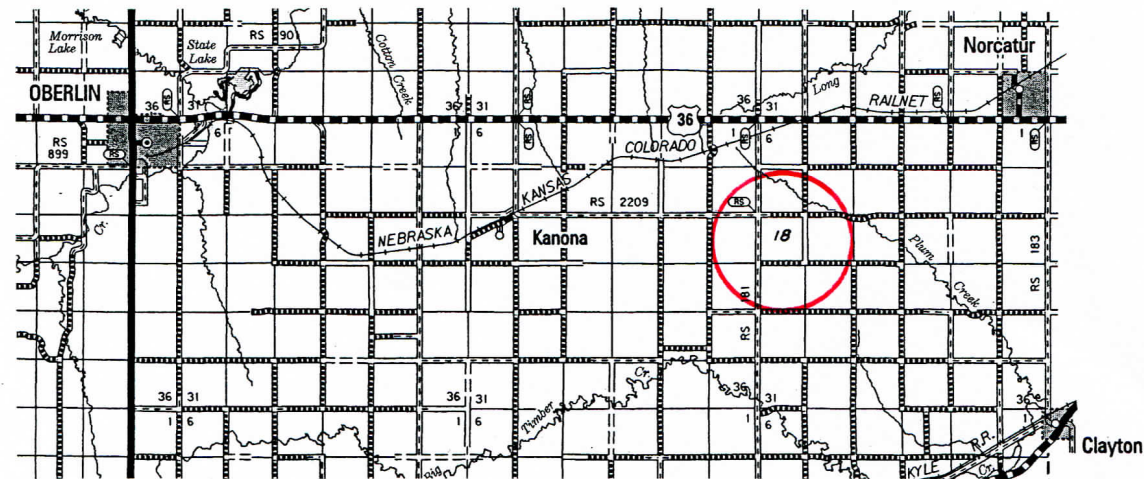
**Notes:**

1. Set (2) wood stakes at location site.
2. All flagging Red & Yellow.
3. Overhead power available at N. line, Sec. 18.
4. Kansas One Call System Inc. should be notified before excavation (1-800-344-7233).
5. CAUTION; Various pipelines in Sec. 18.
6. Contact landowner for best access.

**Drillsite Location**  
**Montgomery Trust #1-18**  
**1357'FSL 330'FWL**  
**Ground Elevation = 2662**  
**Y = 538095 X = 1356451**  
 State Plane-NAD 27-Kansas North  
 (Mapping Grade GPS Used)  
**Latitude 39.788405**  
**Longitude -100.290551**  
 WGS 84-NAD 83

FLAGGED ROAD  
OPPOSITE LOC.

STUBBLE



\* Controlling data is based upon the best maps and photographs available to us and upon a regular section of land containing 640 acres.  
 \* Approximate section lines were determined using the normal standard of care of oilfield surveyors practicing in the state of Kansas. The section corners, which establish the precise section lines, were not necessarily located, and the exact location of the drillsite location in the section is not guaranteed. Therefore, the operator securing this service and accepting this plat and all other parties relying thereon agree to hold Central Kansas Oilfield Services, Inc., its officers and employees harmless from all losses, costs and expenses and said entities released from any liability from incidental or consequential damages.  
 \* Elevations derived from National Geodetic Vertical Datum.

Date April 8, 2015