

QUALITY OILWELL CEMENTING, INC.

Federal Tax I.D.# 20-2886107

Phone 785-483-2025
Cell 785-324-1041

Home Office P.O. Box 32 Russell, KS 67665

No. 1071

Date	Sec.	Twp.	Range	County	State	On Location	Finish
1-6-2015	25	1	33	Rawlins	KANSAS		5:30 AM
Lease				Location			
SINNINGER				ATWOOD KS. 7N 4E 1/4N 1/4W INTO			
Contractor				Well No.		Owner	
VAL DRUG, RIG # 7				1-25		ROY ROSS	
Type Job				To Quality Oilwell Cementing, Inc.			
SURFACE				You are hereby requested to rent cementing equipment and furnish cementer and helper to assist owner or contractor to do work as listed.			
Hole Size		T.D.		Charge To			
12 1/4		325		BOW CREEK OIL			
Csg.		Depth		Street			
8 5/8 New		309					
Tbg. Size		Depth		City			
23# csg.				State			
Tool		Depth		The above was done to satisfaction and supervision of owner agent or contractor.			
Cement Left in Csg.		Shoe Joint		Cement Amount Ordered			
15'-20'				200 SX 80 20 28 GEL 38CC			
Meas Line		Displace					
313 TOTAL PPE		18 3/4 / BBL					
EQUIPMENT				Common			
				160			
Pumptrk		No.		Cementer		Helper	
18				GLENN G.		CODY B.	
Bulktrk		No.		Driver		Driver	
9				RYAN M.			
Bulktrk		No.		Driver		Driver	
JOB SERVICES & REMARKS				Hulls			
Remarks:				Salt			
Rat Hole				Flowseal			
Mouse Hole				Kol-Seal			
Centralizers				Mud CLR 48			
Baskets				CFL-117 or CD110 CAF 38			
D/V or Port Collar				Sand			
Set 8 5/8 SURFACE CSG @				Handling			
Receive Circ. Cement w/200 SX				212			
Displace 18 3/4 / BBL H ₂ O				Mileage			
SHUT IN @ 300#.				FLOAT EQUIPMENT			
Cement Circulated				Guide Shoe			
Sandy Loc.				Centralizer			
				Baskets			
				AFU Inserts			
				Float Shoe			
				Latch Down			
				Pumptrk Charge			
				Surface			
				Mileage			
				66			
				Tax			
				Discount			
				Total Charge			
Signature							
THANKS!							



PO Box 884, Chanute, KS 66720
620-431-9210 or 800-467-8676

1811
1758

PO: 1829

TICKET NUMBER 47926
LOCATION Oakley KS
FOREMAN Dane Retzlaff

FIELD TICKET & TREATMENT REPORT
CEMENT

DATE	CUSTOMER #	WELL NAME & NUMBER	SECTION	TOWNSHIP	RANGE	COUNTY	
1-15-15	1751	Simminger 1-25	25	15	33	RAWLINS	
CUSTOMER		Atwood North to 314 East 3 miles 1/4 North West into		TRUCK #	DRIVER	TRUCK #	DRIVER
MAILING ADDRESS		Bow Creek		772	Mike		
CITY		STATE		366	Colin		
		ZIP CODE		528	Lance		

JOB TYPE 2-Stage HOLE SIZE 7 7/8 HOLE DEPTH 4639 CASING SIZE & WEIGHT 5 1/2 15.5 LBS
 CASING DEPTH 4412.91 DRILL PIPE _____ TUBING _____ OTHER DV Tool at 2890.3
 SLURRY WEIGHT 14.2/12.5 SLURRY VOL 156/1.72 WATER gal/sk 6.97/9.28 CEMENT LEFT IN CASING 12.77
 DISPLACEMENT 104.72/68.7 DISPLACEMENT PSI _____ MIX PSI _____ RATE _____

REMARKS: Safety meeting. Run float equip. Cents on 1, 3, 5, 7, 9, 11, 31, 38
Basket on 37. DV Tool on 37. Run casing. Circ on bottom 1 hr. Pump 5 ahead mix mud flush
Pump 5 behind. Mix 150 sks of OWC 5* Kol seal. Displace 105 BBls. Final lift
was 900 psi. Plug landed at 1400 psi. Circ 3 hrs. Plug Rlt + mix 500 sks of
60/40 Poz mix 800 gal. 1/4 th seal. Displace 70 BBls of water. Final lift was 850 psi
Plug landed at 1500 psi
Ball thru at 600 psi
Tool opened at 900 psi
25 sks 60/40 Rat hole

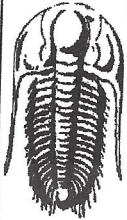
ACCOUNT CODE	QUANTITY or UNITS	DESCRIPTION of SERVICES or PRODUCT	UNIT PRICE	TOTAL
5401c	1	PUMP CHARGE	3175.00	3175.00
5406	65	MILEAGE	5.25	341.25
5407	29.62	Ten Mileage Delivery	1.75	3369.27
1121a	150 sks	Owc Cement	23.70	3555.00
1112a	750 #	Kol Seal	.56	420.00
1131	525 sks	60/40 Poz mix	15.86	8326.50
1107	151 #	Fib Seal	2.97	389.07
1118A	362	Bentonite	.27	978.24
1144G	500 gal	Mudflush	1.00	500.00
4104	1	5 1/2 Basket	290.00	290.00
4130	8	5 1/2 Centralizers	41.00	488.00
4157	1	5 1/2 WPU Float shoe	433.75	433.75
4454	1	5 1/2 Latchdown Plug Assembly	567.00	567.00
4377A	1	5 1/2 DV Tool	4900.00	4900.00
			Sub	27730.08
			136 1570	4159.51
			Total	23570.57
			SALES TAX	1999.70
			ESTIMATED TOTAL	24970.27

Thanks Dane

Revin 3737

AUTHORIZATION [Signature] TITLE _____ DATE _____

I acknowledge that the payment terms, unless specifically amended in writing on the front of the form or in the customer's account records, at our office, and conditions of service on the back of this form are in effect for services identified on this form.



TRILOBITE TESTING, INC.

DRILL STEM TEST REPORT

Bow Creek Oil Co.
108 E 12th St., Ste 5
Hays, KS 67601
ATTN: Tony Stroup

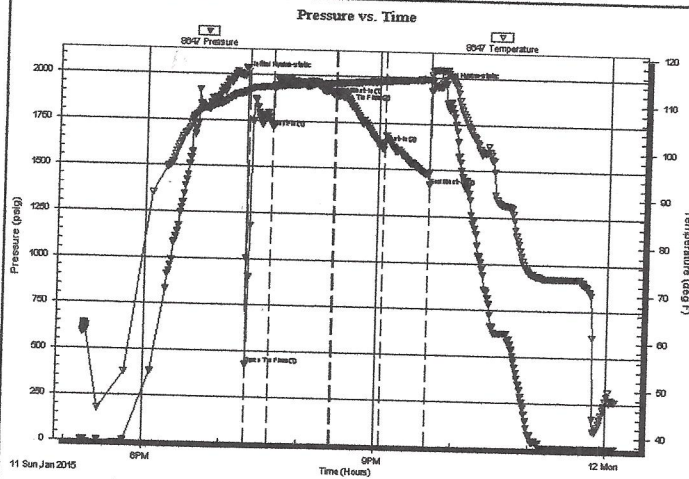
25/1N/33W
Simminger #1-25
Job Ticket: 61058 **DST#: 1**
Test Start: 2015.01.11 @ 17:13:00

GENERAL INFORMATION:

Formation: **LKC "B-C"**
Deviated: No Whipstock: ft (KB)
Time Tool Opened: 19:19:30
Time Test Ended: 00:07:00
Interval: **4027.00 ft (KB) To 4130.00 ft (KB) (TVD)**
Total Depth: **4130.00 ft (KB) (TVD)**
Hole Diameter: **7.88 inches** Hole Condition: Fair
Test Type: Conventional Bottom Hole (Initial)
Tester: Brandon Quintana
Unit No: 57
Reference Elevations: 3054.00 ft (KB)
3043.00 ft (CF)
KB to GR/CF: 11.00 ft

Serial #: 8647 **Inside**
Press@RunDepth: 1644.62 psig @ 4028.00 ft (KB) Capacity: 8000.00 psig
Start Date: 2015.01.11 End Date: 2015.01.12 Last Calib.: 2015.01.12
Start Time: 17:13:00 End Time: 00:07:00 Time On Btm: 2015.01.11 @ 19:15:30
Time Off Btm: 2015.01.11 @ 21:42:30

TEST COMMENT: 30 - IF - Opened w/ surface blow, built to 10" and died back to 9"
45 - ISI - No Return
30 - FF - Surface blow, died back to nothing
30 - FSI - No Return



PRESSURE SUMMARY

Time (Min.)	Pressure (psig)	Temp (deg F)	Annotation
0	1994.76	111.53	Initial Hydro-static
4	429.12	112.12	Open To Flow (1)
22	1716.17	112.94	Shut-In(1)
70	1898.19	113.85	End Shut-In(1)
71	1909.12	113.88	Open To Flow (2)
109	1644.62	114.48	Shut-In(2)
144	1418.87	115.04	End Shut-In(2)
147	1960.59	116.90	Final Hydro-static

Recovery

Length (ft)	Description	Volume (bbl)
128.00	100% mud w/ oil spots in tool	1.22

Gas Rates

	Choke (inches)	Pressure (psig)	Gas Rate (Mcf/d)

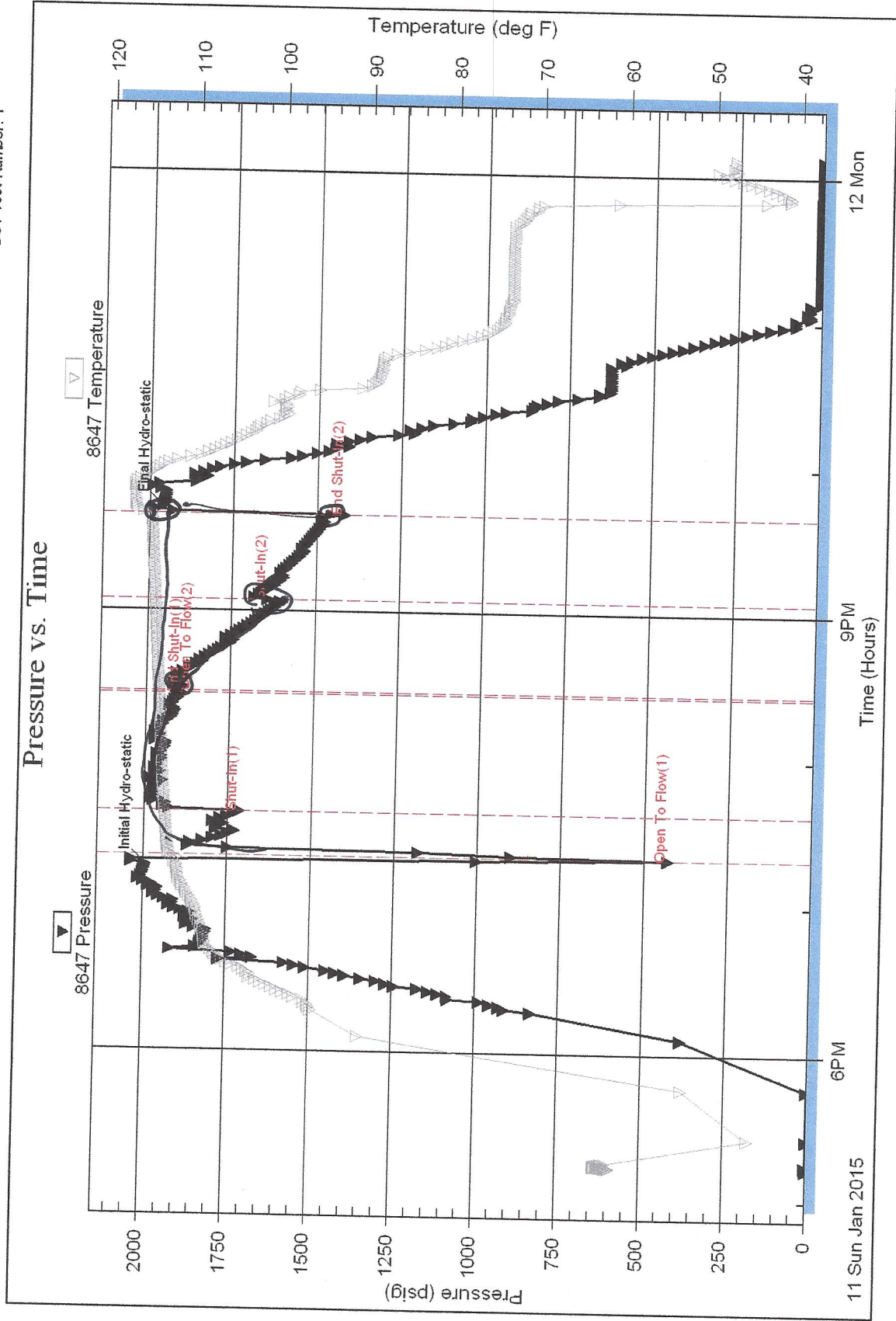
Serial #: 8647

Inside

Bow Creek Oil Co.

Simminger #1-25

DST Test Number: 1

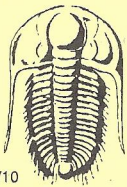


lycheerman@att.net

Tribbitt Testing, Inc

Ref. No: 61058

Printed: 2015.01.12 @ 00:18:18



TRILOBITE TESTING INC.

1515 Commerce Parkway • Hays, Kansas 67601

Branden
785-639-0586

Test Ticket

NO. 61058

Well Name & No. Siminger #128 Test No. 1 Date 1-11-15
 Company Bow Creek Oil Company, General Partner Elevation 3054 KB 3043 GL
 Address 108 E 12th St., STE 5 Hays, KS 67601
 Co. Rep / Geo. Tony Stroup Rig Val #7
 Location: Sec. 25 Twp. 1N Rge. 33W Co. Rawlins State KS

Interval Tested 4027-4130 Zone Tested LKC "B+C"
 Anchor Length 103 Drill Pipe Run 3971 Mud Wt. 9.3
 Top Packer Depth 4022 Drill Collars Run 60.15 Vis 48
 Bottom Packer Depth 4027 Wt. Pipe Run — WL 9.2
 Total Depth 4130 Chlorides 1450 ppm System LCM 2

Blow Description IF - Opened w/ surface blow, built to 10" and died back 109"
ISI - No Blow
FF - surface blow, died back to nothing
ESI - No Return

Rec	Feet of	%gas	%oil	%water	%mud
<u>128</u>	<u>Mud w/ oil spots in tool</u>				<u>100</u>
Rec	Feet of	%gas	%oil	%water	%mud
Rec	Feet of	%gas	%oil	%water	%mud
Rec	Feet of	%gas	%oil	%water	%mud
Rec	Feet of	%gas	%oil	%water	%mud

Rec Total 128 BHT 115 Gravity _____ API RW _____ @ _____ ° F Chlorides _____ ppm

(A) Initial Hydrostatic 1994 Test _____ T-On Location 3:42 PM
 (B) First Initial Flow 429 Jars _____ T-Started 5:13 PM
 (C) First Final Flow 1716 Safety Joint _____ T-Open 7:21 PM
 (D) Initial Shut-In 1898 Circ Sub _____ T-Pulled 10:20 PM 9:36 PM
 (E) Second Initial Flow 1909 Hourly Standby _____ T-Out 12:09 AM
 (F) Second Final Flow 1644 Mileage 88 R.T. Comments _____
 (G) Final Shut-In 1418 Sampler _____
 (H) Final Hydrostatic 1960 Straddle _____
 Shale Packer _____
 Ruined Shale Packer _____
 Ruined Packer _____
 Extra Copies _____

Initial Open 30
 Initial Shut-In 45
 Final Flow 30
 Final Shut-In 30
 Extra Recorder _____
 Day Standby _____
 Accessibility X1
 Sub Total _____
 Sub Total _____
 Sub Total _____
 MP/DST Disc't _____

Approved By _____ Our Representative Branden

Trilobite Testing Inc. shall not be liable for damaged of any kind of the property or personnel of the one for whom a test is made, or for any loss suffered or sustained, directly or indirectly, through the use of its equipment, or its statements or opinion concerning the results of any test, tools lost or damaged in the hole shall be paid for at cost by the party for whom the test is made.



TRILOBITE TESTING, INC.

DRILL STEM TEST REPORT

Bow Creek Oil Co.

25-1n-33w

108 E. 12th St., Ste 5
Hays, KS 67601

Simminger #1-25

ATTN: Tony Stroup

Job Ticket: 62564

DST#: 2

Test Start: 2015.01.12 @ 13:33:00

GENERAL INFORMATION:

Formation: **LKC " D "**

Deviated: No Whipstock: ft (KB)

Time Tool Opened: 15:48:10

Time Test Ended: 20:29:20

Interval: **4132.00 ft (KB) To 4192.00 ft (KB) (TVD)**

Total Depth: 4192.00 ft (KB) (TVD)

Hole Diameter: 7.88 inches Hole Condition: Good

Test Type: Conventional Bottom Hole (Reset)

Tester: Ryan Nichols

Unit No: 78

Reference Elevations: 3054.00 ft (KB)

3043.00 ft (CF)

KB to GR/CF: 11.00 ft

Serial #: 6752

Inside

Press@RunDepth: 353.60 psig @ 4133.00 ft (KB)

Start Date: 2015.01.12 End Date: 2015.01.12

Start Time: 13:33:00 End Time: 20:29:20

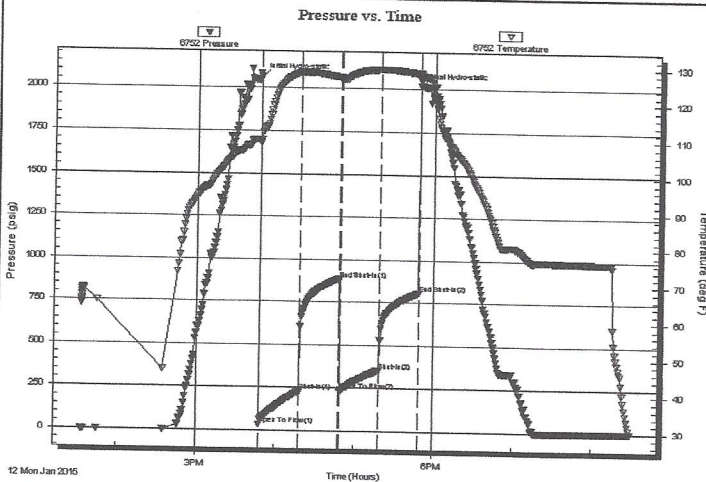
Capacity: 8000.00 psig

Last Calib.: 2015.01.12

Time On Btrn: 2015.01.12 @ 15:48:00

Time Off Btrn: 2015.01.12 @ 17:48:40

TEST COMMENT: 30 IF - 2" blow built to BoB @ 5 mins
30 ISI - Weak surface blow started @ 11 mins
30 FF - 1/2" blow built to BoB @ 9 mins
30 FSI - No return



PRESSURE SUMMARY

Time (Min.)	Pressure (psig)	Temp (deg F)	Annotation
0	2065.09	109.89	Initial Hydro-static
1	33.46	109.11	Open To Flow (1)
30	228.49	128.41	Shut-In(1)
61	886.42	127.11	End Shut-In(1)
61	236.56	126.82	Open To Flow (2)
91	353.60	129.31	Shut-In(2)
121	806.88	128.34	End Shut-In(2)
121	2015.72	128.50	Final Hydro-static

Recovery

Length (ft)	Description	Volume (bbl)
60.00	MCW - 45%M - 55%W	0.30
261.00	MCW - 5%M - 95%W	3.66
248.00	MCW - 10%M - 90%W	3.48
131.00	MCW W/oil spots - 30%M - 70%W	1.84

* Recovery from multiple tests

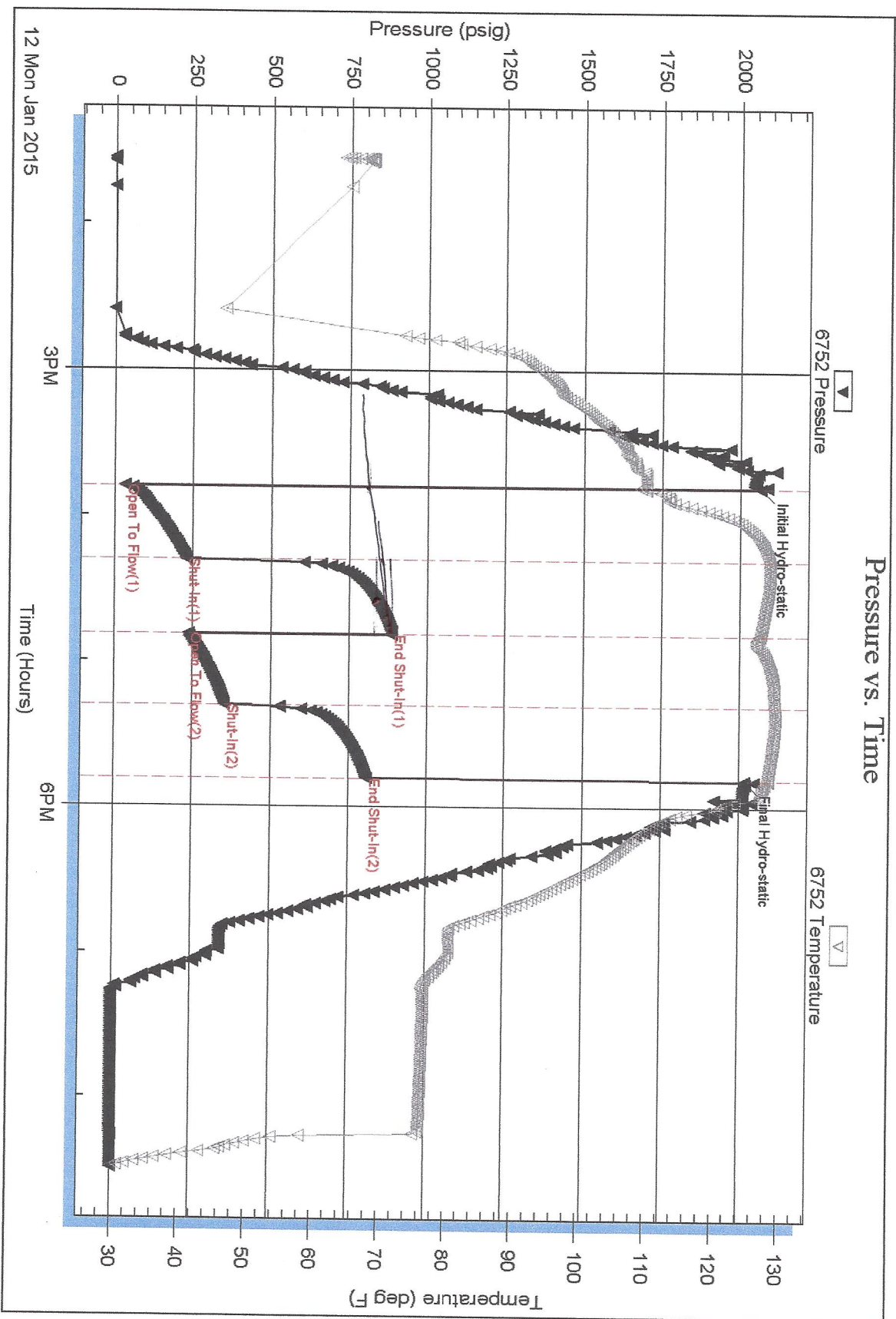
Gas Rates

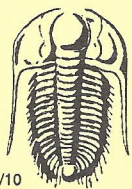
Choke (inches)	Pressure (psig)	Gas Rate (Mcf/d)

Serial #: 6752 Inside Bow Creek Oil Co.

Stiminger #1-25

DST Test Number: 2





TRILOBITE TESTING INC.

1515 Commerce Parkway • Hays, Kansas 67601

Test Ticket

NO. 62564

Well Name & No. Simminger # 1-25 Test No. 2 Date 1/12/15
 Company Flow Creek Oil Co. Elevation 3054 KB 3043 GL
 Address 108 E. 12th St. STE 5 Hays KS 67601
 Co. Rep / Geo. Tony Stroup Rig Vol # 7
 Location: Sec. 25 Twp. 1N Rge. 33W Co. Rawlins State KS

Interval Tested 4132-4192 Zone Tested 2KC "D"
 Anchor Length 60' Drill Pipe Run 4085' Mud Wt. 9.04
 Top Packer Depth 4127 Drill Collars Run 60' Vis 55
 Bottom Packer Depth 4132 Wt. Pipe Run 0' WL 8
 Total Depth 4192 Chlorides 750 ppm System LCM 2

Blow Description IF - 1" blow built to BOT @ 5 mins
ISI - Weak surface blow started @ 11 mins
FF - 1/2" blow built to BOT @ 9 mins
FSL - No return

Rec	Feet of	%gas	%oil	%water	%mud
<u>131</u>	<u>MCW w/oit spots</u>		<u>70</u>	<u>30</u>	
<u>248</u>	<u>MCW</u>		<u>90</u>	<u>10</u>	
<u>261</u>	<u>MCW</u>		<u>95</u>	<u>5</u>	
<u>60'</u>	<u>MCW</u>		<u>55</u>	<u>45</u>	
<u>700'</u>					

Rec Total 700' BHT 128° Gravity — API RW 295 @ 25 °F Chlorides 76,000 ppm

(A) Initial Hydrostatic 2065 Test 13:00 T-On Location
 (B) First Initial Flow 33 Jars 13:33 T-Started
 (C) First Final Flow 228 Safety Joint 15:49 T-Open
 (D) Initial Shut-In 886 Circ Sub NC 17:49 T-Pulled
 (E) Second Initial Flow 237 Hourly Standby 20:29 T-Out
 (F) Second Final Flow 354 Mileage 88 KT Comments
 (G) Final Shut-In 807 Sampler
 (H) Final Hydrostatic 2016 Straddle Ruined Shale Packer
 Shale Packer Ruined Packer
 Extra Packer Extra Copies
 Extra Recorder Sub Total
 Day Standby Total
 Accessibility MP/DST Disc't
 Sub Total

Initial Open 30
 Initial Shut-In 30
 Final Flow 70
 Final Shut-In 30

Approved By _____ Our Representative [Signature]

Trilobite Testing Inc. shall not be liable for damaged of any kind of the property or personnel of the one for whom a test is made, or for any loss suffered or sustained, directly or indirectly, through the use of its equipment, or its statements or opinion concerning the results of any test, tools lost or damaged in the hole shall be paid for at cost by the party for whom the test is made.



**TRILOBITE
TESTING, INC**

DRILL STEM TEST REPORT

Bow Creek Oil Co.
108 E. 12th St., Ste 5
Hays, KS 67601
ATTN: Tony Stroup

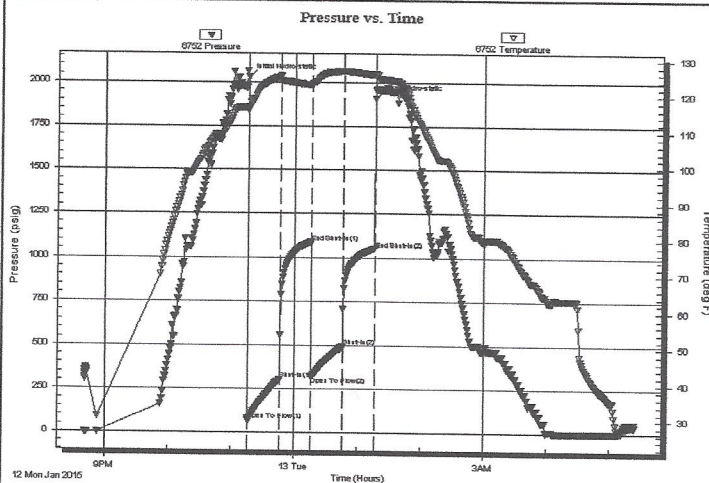
25-1N-33W Rawlins, KS
Simminger #1-25
Job Ticket: 62565 **DST#: 3**
Test Start: 2015.01.12 @ 20:41:00

GENERAL INFORMATION:

Formation: **LKC " B - C "**
Deviated: No Whipstock: ft (KB)
Time Tool Opened: 23:16:10
Time Test Ended: 05:23:49
Interval: **4030.00 ft (KB) To 4127.00 ft (KB) (TVD)**
Total Depth: 4192.00 ft (KB) (TVD)
Hole Diameter: 7.88 inches Hole Condition: Good
Test Type: Conventional Straddle (Reset)
Tester: Ryan Nichols
Unit No: 78
Reference Elevations: 3054.00 ft (KB)
3043.00 ft (CF)
KB to GR/CF: 11.00 ft

Serial #: 6752 Inside
Press@RunDepth: 492.82 psig @ 4031.00 ft (KB) Capacity: 8000.00 psig
Start Date: 2015.01.12 End Date: 2015.01.13 Last Calib.: 2015.01.13
Start Time: 20:41:00 End Time: 05:23:49 Time On Btm: 2015.01.12 @ 23:15:50
Time Off Btm: 2015.01.13 @ 01:16:39

TEST COMMENT: 30 IF - BoB @ 2 mins 40 secs (in diesel)
30 ISI - Surface blow started @ 6 mins
30 FF - 1" blow built to BoB @ 4 mins 40 secs
30 FSI - Surface blow started @ 10 mins built to 1/2"



PRESSURE SUMMARY

Time (Min.)	Pressure (psig)	Temp (deg F)	Annotation
0	2028.82	116.75	Initial Hydro-static
1	67.96	116.44	Open To Flow (1)
30	306.47	125.29	Shut-In(1)
60	1083.78	123.02	End Shut-In(1)
60	324.40	122.84	Open To Flow (2)
90	492.82	126.82	Shut-In(2)
121	1048.44	125.74	End Shut-In(2)
121	1908.74	125.89	Final Hydro-static

Recovery

Length (ft)	Description	Volume (bbl)
252.00	GOMCW - 5%M - 15%o - 5%M - 75%W	2.99
317.00	OMCW - 10%o - 20%M - 70%W	4.45
378.00	GOMCW - 5%G - 5%o - 30%M - 60%W	5.30
202.00	GOWCM - 15%G - 10%o - 15%W - 50%W	2.83
15.00	Oil - 100%o	0.21

* Recovery from multiple tests

Gas Rates

Choke (inches)	Pressure (psig)	Gas Rate (Mcf/d)

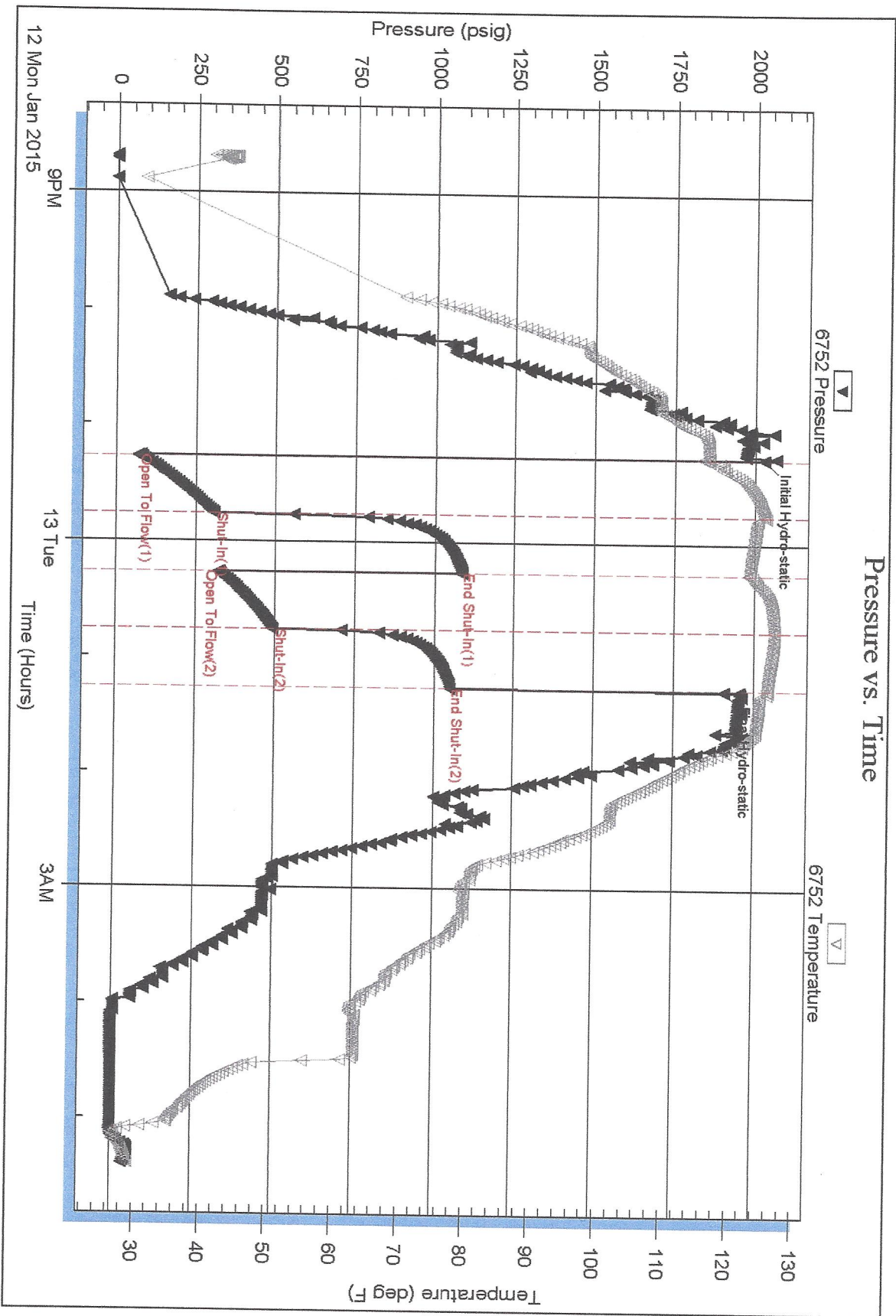
Serial #: 6752

Inside

Bow Creek Oil Co.

Simminger #1-25

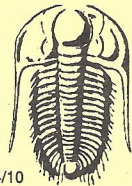
DST Test Number: 3



Trilobe Testing, Inc

Ref. No: 62565

Printed: 2015.01.13 @ 05:39:52



TRILOBITE TESTING INC.

1515 Commerce Parkway • Hays, Kansas 67601

Test Ticket

NO. 62585

Well Name & No. Simminger # 1-25 Test No. 3 Date 1/12/15
 Company Pow Creek Oil Co Elevation 3054 KB 3043 GL
 Address 102 E 123 St STE 5 Hays KS 67601
 Co. Rep / Geo. Tony Stroop Rig Val # 7
 Location: Sec. 25 Twp. 1N Rge. 33W Co. Kanlin State KS

Interval Tested 4030 - 4127 Zone Tested LKC "B-C"
 Anchor Length 97' Drill Pipe Run 3973' Mud Wt. 9.4
 Top Packer Depth 4025 4030 Drill Collars Run 60' Vis 55
 Bottom Packer Depth 4127 (shale) Wt. Pipe Run 0' WL 8.0
 Total Depth 4192 Chlorides 750 ppm System LCM 2
 Blow Description IF - BoB @ 2 mins 40 secs (in diesel)
ISI - Surface blow started @ 6 mins
FF - 1" blow built to ToD @ 4 mins 10 secs
ISI -

Rec	Feet of	%gas	%oil	%water	%mud
19	Oil	100			
202	GOMCM	15	10	15	50
378	GOMCW	5	5	60	30
317	GOMCW	10	70	20	
252	GOMCW	5	15	75	5

Rec Total 7164' BHT 126° Gravity 2.25 API RW .230 @ 42 °F Chlorides 64000 ppm

(A) Initial Hydrostatic 2029' Test 17:49 T-On Location
 (B) First Initial Flow 68 Jars 20:41 T-Started
 (C) First Final Flow 306 Safety Joint 23:16 T-Open
 (D) Initial Shut-In 1084 Circ Sub NL T-Pulled 01:16
 (E) Second Initial Flow 324 Hourly Standby 05:23 T-Out
 (F) Second Final Flow 493 Mileage
 (G) Final Shut-In 1048 Sampler
 (H) Final Hydrostatic 1909 Straddle Ruined Shale Packer
 Shale Packer Ruined Packer
 Extra Packer Extra Copies
 Extra Recorder Sub Total
 Day Standby Total
 Accessibility MP/DST Disc't
 Sub Total

Approved By _____ Our Representative [Signature]

Trilobite Testing Inc. shall not be liable for damaged of any kind of the property or personnel of the one for whom a test is made, or for any loss suffered or sustained, directly or indirectly, through the use of its equipment, or its statements or opinion concerning the results of any test, tools lost or damaged in the hole shall be paid for at cost by the party for whom the test is made.