



TRILOBITE TESTING, INC.

DRILL STEM TEST REPORT

Samuel Gary Jr. & Associates, Inc.

15-10S-30W

1515 Wynkoop, STE 700
Denver, CO, 80202

Fellhoelter 1-15

Job Ticket: 62142

DST#: 2

ATTN: Chris Mitchell

Test Start: 2015.01.13 @ 13:14:00

GENERAL INFORMATION:

Formation: **LKC "I-J"**

Deviated: No Whipstock: ft (KB)

Time Tool Opened: 15:26:45

Time Test Ended: 19:35:00

Test Type: Conventional Bottom Hole (Initial)

Tester: Donovan Baumann

Unit No: 83

Interval: 4092.00 ft (KB) To 4144.00 ft (KB) (TVD)

Reference Elevations: 2881.00 ft (KB)

Total Depth: 4144.00 ft (KB) (TVD)

2873.00 ft (CF)

Hole Diameter: 7.88 inches Hole Condition: Good

KB to GR/CF: 8.00 ft

Serial #: 8366 Outside

Press@RunDepth: 26.89 psig @ 4093.00 ft (KB)

Capacity: 8000.00 psig

Start Date: 2015.01.13

End Date: 2015.01.13

Last Calib.: 2015.01.13

Start Time: 13:14:05

End Time: 19:34:59

Time On Btm: 2015.01.13 @ 15:26:30

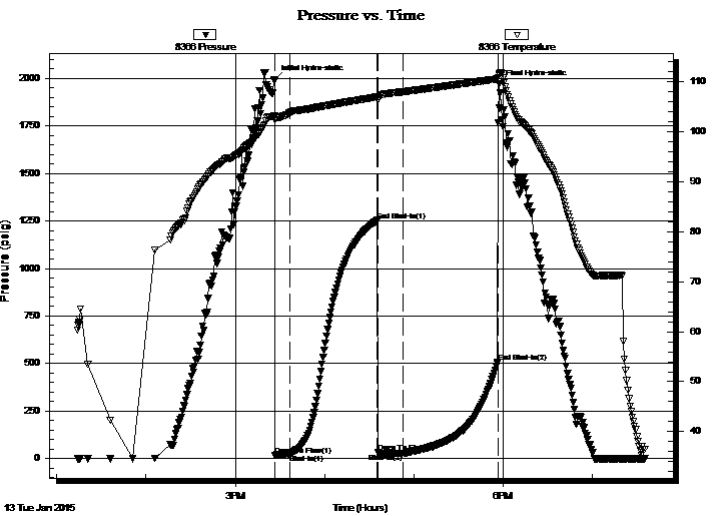
Time Off Btm: 2015.01.13 @ 17:57:15

TEST COMMENT: 10 - IF - Weak surface blow built to 1 in. in 10 min. (In Diesel)

60 - ISI - No return

15 - FF - Weak surface blow built to 1 1/4 in. in 15 min.

60 - FSI - No return



PRESSURE SUMMARY

Time (Min.)	Pressure (psig)	Temp (deg F)	Annotation
0	1992.13	103.14	Initial Hydro-static
1	17.43	102.52	Open To Flow (1)
10	21.67	103.76	Shut-In(1)
69	1252.71	107.01	End Shut-In(1)
70	30.48	106.38	Open To Flow (2)
86	26.89	108.02	Shut-In(2)
150	508.18	110.61	End Shut-In(2)
151	1970.47	111.47	Final Hydro-static

Recovery

Length (ft)	Description	Volume (bbl)
7.00	OCM- 15o - 85M	0.03

Gas Rates

Choke (inches)	Pressure (psig)	Gas Rate (Mcf/d)



TRILOBITE TESTING, INC.

DRILL STEM TEST REPORT

Samuel Gary Jr. & Associates, Inc.

15-10S-30W

1515 Wynkoop, STE 700
Denver, CO, 80202

Fellhoelter 1-15

Job Ticket: 62142

DST#: 2

ATTN: Chris Mitchell

Test Start: 2015.01.13 @ 13:14:00

GENERAL INFORMATION:

Formation: **LKC "I-J"**

Deviated: No Whipstock: ft (KB)

Time Tool Opened: 15:26:45

Time Test Ended: 19:35:00

Test Type: Conventional Bottom Hole (Initial)

Tester: Donovan Baumann

Unit No: 83

Interval: **4092.00 ft (KB) To 4144.00 ft (KB) (TVD)**

Total Depth: 4144.00 ft (KB) (TVD)

Hole Diameter: 7.88 inches Hole Condition: Good

Reference Elevations: 2881.00 ft (KB)

2873.00 ft (CF)

KB to GR/CF: 8.00 ft

Serial #: 8320

Fluid

Press@RunDepth: psig @ 4059.00 ft (KB)

Start Date: 2015.01.13

End Date: 2015.01.13

Start Time: 13:14:05

End Time: 19:35:14

Capacity: 8000.00 psig

Last Calib.: 2015.01.13

Time On Btm:

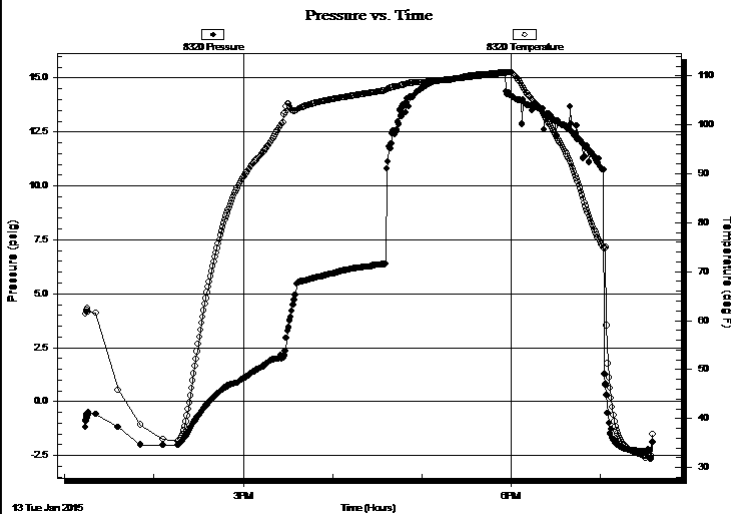
Time Off Btm:

TEST COMMENT: 10 - IF - Weak surface blow built to 1 in. in 10 min. (In Diesel)

60 - ISI - No return

15 - FF - Weak surface blow built to 1 1/4 in. in 15 min.

60 - FSI - No return



PRESSURE SUMMARY

Time (Min.)	Pressure (psig)	Temp (deg F)	Annotation

Recovery

Length (ft)	Description	Volume (bbl)
7.00	OCM - 150 - 85M	0.03

Gas Rates

	Choke (inches)	Pressure (psig)	Gas Rate (Mcf/d)



**TRILOBITE
TESTING, INC**

DRILL STEM TEST REPORT

FLUID SUMMARY

Samuel Gary Jr. & Associates, Inc.

15-10S-30W

1515 Wynkoop, STE 700
Denver, CO, 80202

Fellhoelter 1-15

Job Ticket: 62142

DST#: 2

ATTN: Chris Mitchell

Test Start: 2015.01.13 @ 13:14:00

Mud and Cushion Information

Mud Type: Gel Chem

Cushion Type:

Oil API:

deg API

Mud Weight: 9.00 lb/gal

Cushion Length:

ft

Water Salinity:

ppm

Viscosity: 63.00 sec/qt

Cushion Volume:

bbbl

Water Loss: 6.40 in³

Gas Cushion Type:

Resistivity: 0.00 ohm.m

Gas Cushion Pressure:

psig

Salinity: 500.00 ppm

Filter Cake: 1.00 inches

Recovery Information

Recovery Table

Length ft	Description	Volume bbl
7.00	OCM - 15o - 85M	0.034

Total Length: 7.00 ft Total Volume: 0.034 bbl

Num Fluid Samples: 0

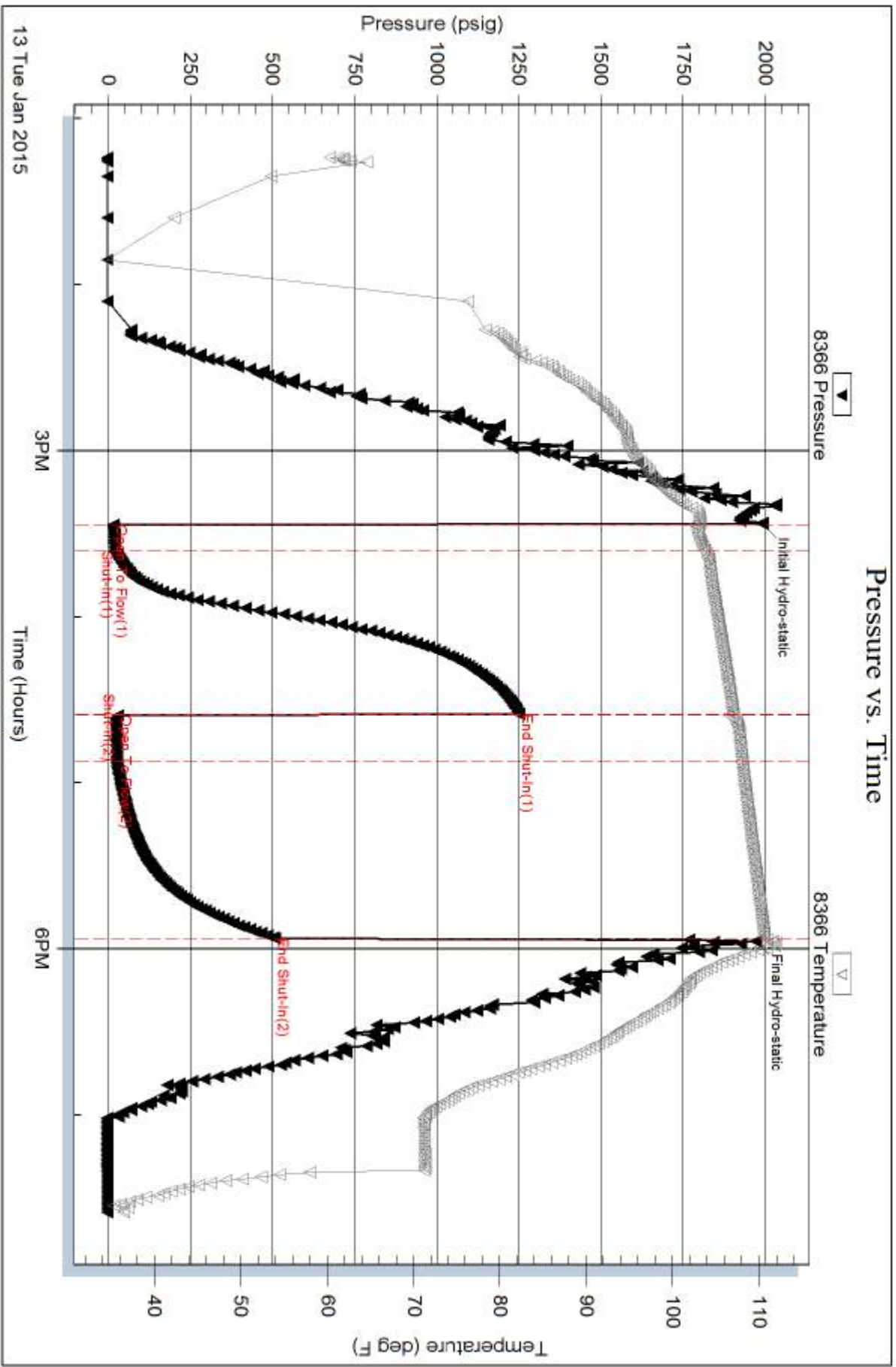
Num Gas Bombs: 0

Serial #:

Laboratory Name:

Laboratory Location:

Recovery Comments:



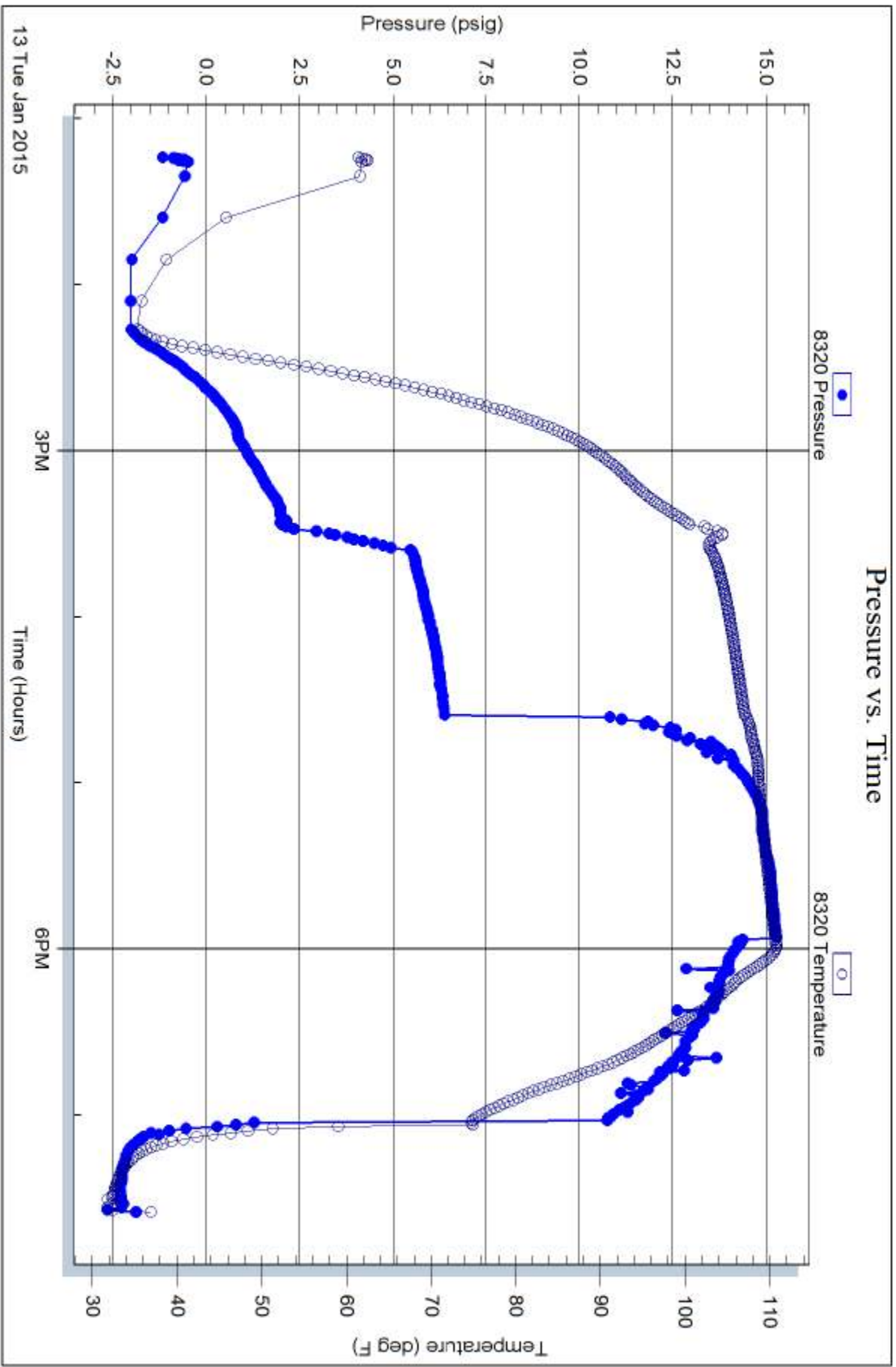
Serial #: 8320

Fluid

Samuel Gary Jr. & Associates, Inc.

Fellhoelter 1-15

DST Test Number: 2



Trilobite Testing, Inc

Ref. No: 62142

Printed: 2015.01.14 @ 08:01:49