



**TRILOBITE
TESTING, INC.**

DRILL STEM TEST REPORT

Berexco LLC.
2020 N. Bramblewood
Wichita Ks, 67206
ATTN: Pete Vollmer

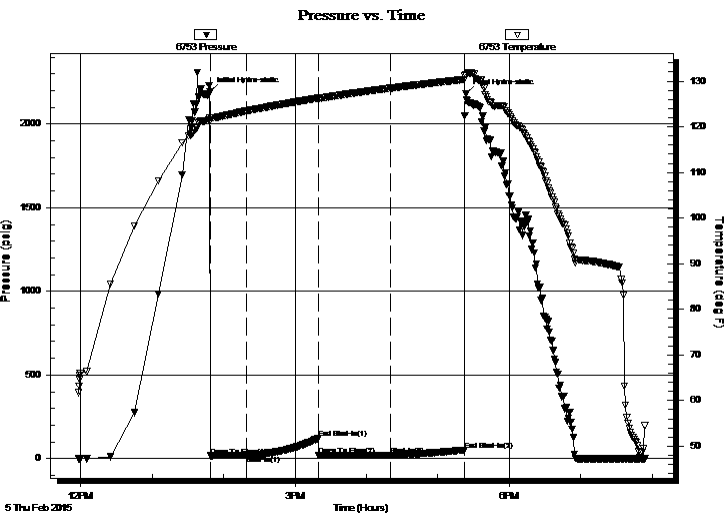
19-1S-37W
Owens - Trust #2-19
Job Ticket: 61090 **DST#: 3**
Test Start: 2015.02.05 @ 11:58:00

GENERAL INFORMATION:

Formation: **KCL - 'E'**
Deviated: No Whipstock: ft (KB)
Time Tool Opened: 13:48:45
Time Test Ended: 19:53:45
Interval: **4362.00 ft (KB) To 4420.00 ft (KB) (TVD)**
Total Depth: 4420.00 ft (KB) (TVD)
Hole Diameter: 7.88 inches Hole Condition: Good
Test Type: Conventional Bottom Hole (Initial)
Tester: Royal Fisher
Unit No: #54
Reference Elevations: 3236.00 ft (KB)
3223.00 ft (CF)
KB to GR/CF: 13.00 ft

Serial #: 6753 Outside
Press @ Run Depth: 20.72 psig @ 4363.00 ft (KB) Capacity: 8000.00 psig
Start Date: 2015.02.05 End Date: 2015.02.05 Last Calib.: 2015.02.05
Start Time: 11:58:05 End Time: 19:53:44 Time On Btm: 2015.02.05 @ 13:48:30
Time Off Btm: 2015.02.05 @ 17:23:30

TEST COMMENT: 30 - IF - Started with weak surface blow then died in 20 min.
60 - ISI - No Return
60 - FF - No Surface blow
60 - FSI - No Return



PRESSURE SUMMARY

Time (Min.)	Pressure (psig)	Temp (deg F)	Annotation
0	2196.40	122.01	Initial Hydro-static
1	16.73	121.33	Open To Flow (1)
31	18.30	123.43	Shut-In(1)
91	120.23	126.25	End Shut-In(1)
91	18.96	126.19	Open To Flow (2)
152	20.72	128.45	Shut-In(2)
214	51.35	130.36	End Shut-In(2)
215	2183.44	131.38	Final Hydro-static

Recovery

Length (ft)	Description	Volume (bbl)
5.00	Mud - 100M	0.02

Gas Rates

Choke (inches)	Pressure (psig)	Gas Rate (Mcf/d)



**TRILOBITE
TESTING, INC.**

DRILL STEM TEST REPORT

FLUID SUMMARY

Berexco LLC.

19-1S-37W

2020 N. Bramblewood
Wichita Ks, 67206

Owens - Trust #2-19

Job Ticket: 61090

DST#: 3

ATTN: Pete Vollmer

Test Start: 2015.02.05 @ 11:58:00

Mud and Cushion Information

Mud Type: Gel Chem

Cushion Type:

Oil API:

deg API

Mud Weight: 9.00 lb/gal

Cushion Length:

ft

Water Salinity:

ppm

Viscosity: 57.00 sec/qt

Cushion Volume:

bbbl

Water Loss: 6.80 in³

Gas Cushion Type:

Resistivity: 0.00 ohm.m

Gas Cushion Pressure:

psig

Salinity: 600.00 ppm

Filter Cake: 2.00 inches

Recovery Information

Recovery Table

Length ft	Description	Volume bbl
5.00	Mud - 100M	0.025

Total Length: 5.00 ft Total Volume: 0.025 bbl

Num Fluid Samples: 0

Num Gas Bombs: 0

Serial #:

Laboratory Name:

Laboratory Location:

Recovery Comments:

