



Petroleum Geology
212 Main Street, Claflin KS

Geologist's Report

Company: L. D. Drilling, Inc.
 Lease: R & B Unit #1-25
 Field: Pundsack
 Surface Location: NW-NW-NE-SE (2598' FSL & 1010' FEL)
 Sec: 25 Twp: 21S Rge: 14W
 County: Stafford State: Kansas
 GL: 1917' KB: 1922'

Contractor: Petromark Drilling Rig #2
 Spud: 3/03/15 Comp: 3/13/15
 RTD: 3810' LTD: 3811'
 Mud Up: +/- 3000' Mud Type: Chemical Displaced

Drilling Time Kept From: 3100' to RTD
 Samples Saved From: 3100' to RTD
 Samples Examined: 3100' to RTD
 Geological Supervision: 3275' to RTD
 Geologist on Well: Kurt Talbott

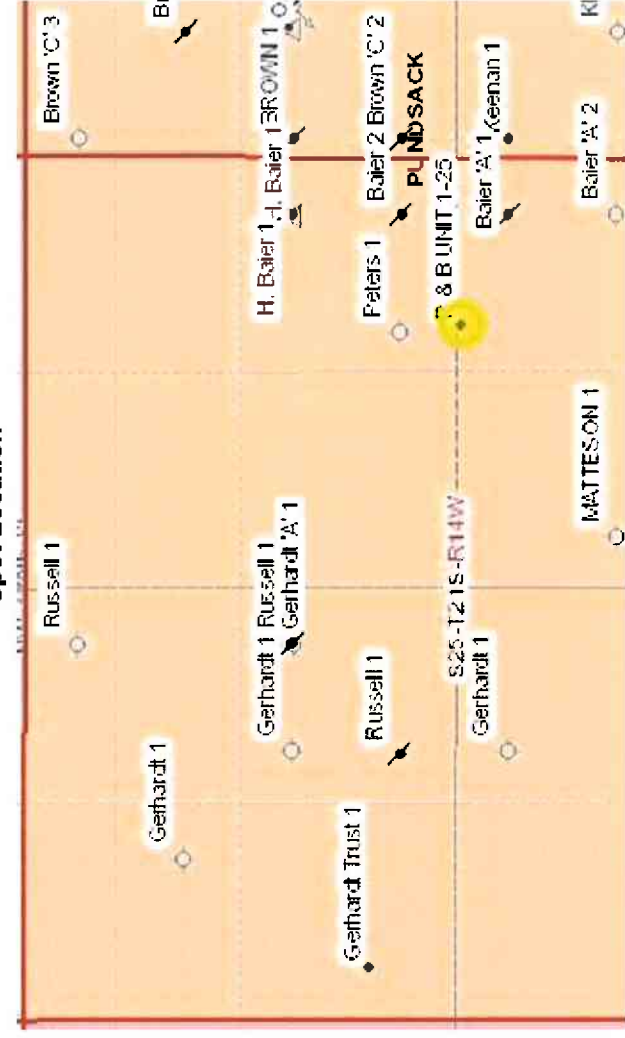
Surface Casing: 8 5/8" @ 431'
 Production Casing: 4 1/2" @ 3810'

Wireline Logs: By Nabors: CNL/CDL, DIL, MEL, Sonic

FORMATION	LD DRILLING		CORAL PRODUCTION		GMR OIL	
	Log	Log SS	SAMPLE	SS	MD	SS
ANHYDRITE	821	1101				
BASE ANHYDRITE	844	1078				
HEEBNER	3263	-1341	3264	-1338		
TORONTO	3283	-1361	3284	-1358		
BROWN LIME	3384	-1462			3379	-1450
LANSING	3396	-1474			3393	-1464
BASE KC	3611	-1689			3641	-1712
VIOLA	3658	-1736			3685	-1756
SIMPSON	3700	-1778			3738	-1809
ARBUCKLE	3758	-1836	3754	-1828	3745	-1816
TOTAL DEPTH	3811	-1889	3766	-1840		

Well Comparison

Spot Location



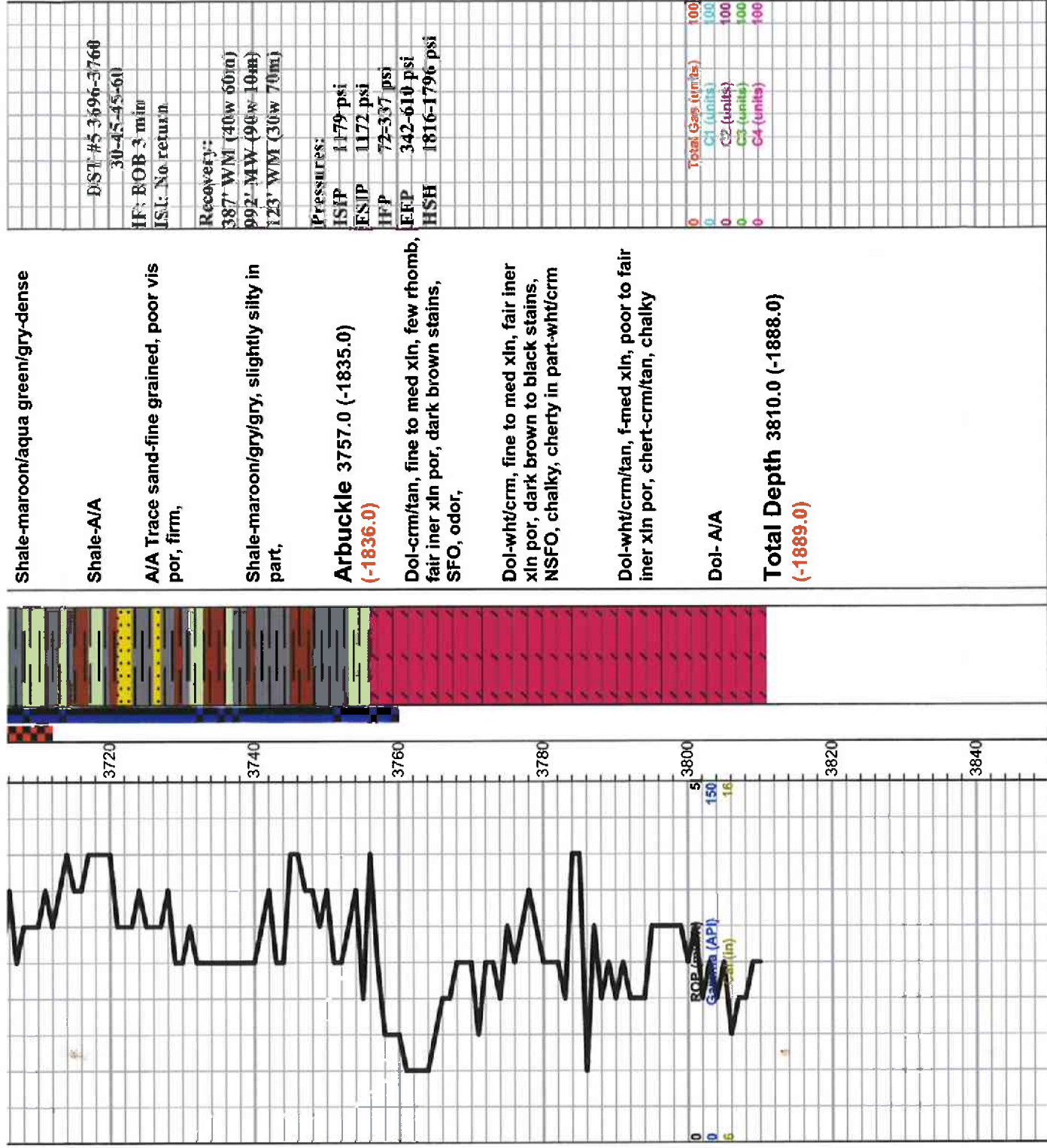
ROCK TYPES	
	Dolprim Lmst fw<7
	shale, gm
	shale, gry
	Carbon Sh shale, red
	Ss

OTHER SYMBOLS

EVENTS
 Casing Shoe
 RTF
 Core

INTERVALS

DST int
 DST alt



Shale-maroon/aqua green/gry-dense

Shale-A/A

A/A Trace sand-fine grained, poor vis por, firm,

Shale-maroon/gry/gry, slightly silty in part,

Arbuckle 3757.0 (-1835.0) (-1836.0)

Dol-crm/tan, fine to med xin, few rhomb, fair iner xin por, dark brown stains, SFO, odor,

Dol-wht/crm, fine to med xin, fair iner xin por, dark brown to black stains, NSFO, chalky, cherty in part-wht/crm

Dol-wht/crm/tan, f-med xin, poor to fair iner xin por, chert-crm/tan, chalky

Dol- A/A

Total Depth 3810.0 (-1888.0) (-1889.0)