

# GEOLOGIC REPORT

## DAVID J. GOLDAK

WICHITA, KANSAS  
Scale 1:240 (5"=100') Imperial  
Measured Depth Log

Well Name: Wiechman Trust #1-13  
Location: Section 13 - T17S - R33W  
License Number: API: 15-171-21127  
Spud Date: 02 / 13 / 2015  
Surface Coordinates: 1466' FSL and 2136' FEL  
SE - SW - NW - SE  
Region: Scott Co., KS  
Drilling Completed: 02 / 21 / 2015  
Bottom Hole Coordinates:  
Ground Elevation (ft): 2982' K.B. Elevation (ft): 2987'  
Logged Interval (ft): 3700' To: 4756' Total Depth (ft): 4756'  
Formation: Mississippian - St Louis  
Type of Drilling Fluid: Chemical - Mud-Co

Printed by MUD.LOG from WellSight Systems 1-800-447-1534 www.WellSight.com

### OPERATOR

Company: Stelbar Oil Corporation  
Address: 1625 N. Waterfront Pkwy., Suite 200  
Wichita, Kansas 67206-6602

### GEOLOGIST

Name: David J. Goldak  
Company: D. J. GOLDAK, INC.  
Address: 155 N. Market, Suite 710  
Wichita, Kansas 67202

### General Info

CONTRACTOR: WW Drilling, Rig #8

#### BIT RECORD:

No.	Size	Make	Jets	Out	Feet	Hours
1	12-1/4	Smith-?	15-14-14	302	302	2.25
2	7-7/8	Smith-F27	15-14-14	4756	4454	105.75

SURVEYS: 302'-0.75, 4417'-1.00, 4756'-1.25

#### GENERAL DRILLING & PUMP INFORMATION:

Drilling with 8 stands of collars (6.25"x2.25"): 477.15'  
Drilling with 38,000-39,000 lbs on bit and 80-85 RPM.  
Pumping 57 S/M; 7.35 B/M; 800-900 psi at the standpipe.

## Daily Status

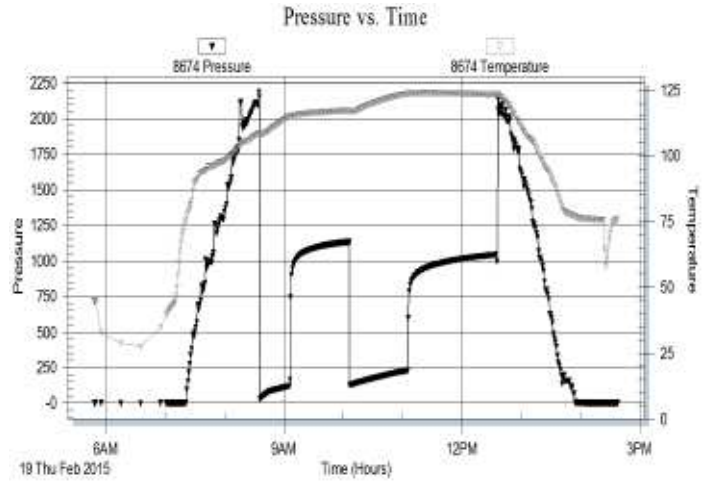
02/13/15 - Spud at 2:00 PM; Set 8-5/8" csg at 301'  
 02/14/15 - 880' Drilling; Lost circ & stuck @ 2,620'  
 02/15/15 - 2,620' Stuck; Spot oil @ 6:15 AM, free at 6:15 PM  
 02/16/15 - 3,042' Drilling; Displace mud @ 3,366'  
 02/17/15 - 3,698' Drilling; Short trip @ 4,019'  
 02/18/15 - 4,162' Drilling  
 02/19/15 - 4,417' TIH with DST #1  
 02/20/15 - 4,605' Drilling; DST #2 @ 4,639'  
 02/21/15 - 4,727' Drilling; TD @ 4,756'; Log in PM

**DST #1: 4,340' - 4,417' (Marmaton)**  
30" - 60" - 60" - 90"

**IF: Blow built to BOB in 18 minutes**  
**ISI: No blow back**  
**FF: Blow built to BOB in 25 minutes**  
**FSI: No blow back**

**RECOVERY: 466' Total Fluid, consisting of:**  
 466' MW (85% W, 15% M)  
**Chlorides recovery: 38,000 ppm**  
**Sampler: 500 ml Mud & 1500 ml Water**

**SIP: 1122-993; FP: 27-162, 126-227; HP: 2152-2065;**  
**BHT: 123**

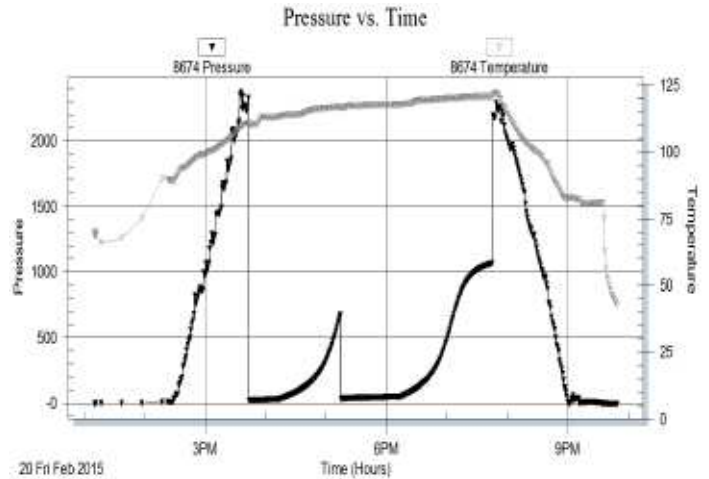


**DST #2: 4,580' - 4,639' (Johnson Zone)**  
30" - 60" - 60" - 90"

**IF: Weak blow building to 3-1/2 inches**  
**ISI: No blow back**  
**FF: Fair blow building to BOB in 30 minutes**  
**FSI: No blow back**

**RECOVERY: 95' Total Fluid, consisting of:**  
 95' OCM (10% O, 90% M)  
**Sampler: 1800 ml Oil & 100 ml M**  
**Oil Gravity: 30 API**

**SIP: 674-1065; FP: 19-34, 34-49; HP: 2324-2196;**  
**BHT: 121**



## ROCK TYPES

	Anhy
	Bent
	Brec
	Cht
	Clyst
	Coal
	Congl
	Dol

	Gyp
	Igne
	Lmst
	Meta
	Mrlst
	Salt
	Shale
	Shcol

	Shgy
	Sltst
	Ss
	Till
	Carb sh
	Dol
	Dtd
	Gry sh

	Sandylms
	Shale
	Sltstn
	Shlyslts
	Slytsh
	Lms

### ACCESSORIES

#### MINERAL

- Anhy
- Arggrn
- Arg
- Bent
- Bit
- Brecfrag
- Calc
- Carb
- Chtdk
- Chtlt
- Dol
- Feldspar
- Ferrpel
- Ferr
- Glau
- Gyp
- Hvymin
- Kaol
- Marl
- Minxl
- Nodule
- Phos
- Pyr

- Salt
- Sandy
- Silt
- Sil
- Sulphur
- Tuff
- Chlorite
- Dol
- Sand
- Sltly

#### FOSSIL

- Algae
- Amph
- Belm
- Bioclst
- Brach
- Bryozoa
- Cephal
- Coral
- Crin
- Echin
- Fish
- Foram

- Fossil
- Gastro
- Oolite
- Ostra
- Pelec
- Pellet
- Pisolite
- Plant
- Strom
- Fuss
- Oomold

#### STRINGER

- Anhy
- Arg
- Bent
- Coal
- Dol
- Gyp
- Ls
- Mrst
- Sltstrg
- Ssstrg
- Carbsh

- Clystn
- Dol
- Grysh
- Gryslt
- Lms
- Sandylms
- Sh
- Sltstn

#### TEXTURE

- Boundst
- Chalky
- Cryxln
- Earthy
- Finexln
- Grainst
- Lithogr
- Microxln
- Mudst
- Packst
- Wackest

### OTHER SYMBOLS

#### POROSITY TYPE

- Earthy
- Fenest
- Fracture
- Inter
- Moldic
- Organic
- Pinpoint
- Vuggy

#### SORTING

- Well
- Moderate
- Poor

#### ROUNDING

- Rounded
- Subrnd
- Subang
- Angular

#### OIL SHOWS

- Even
- Spotted
- Ques
- Dead
- Gas show

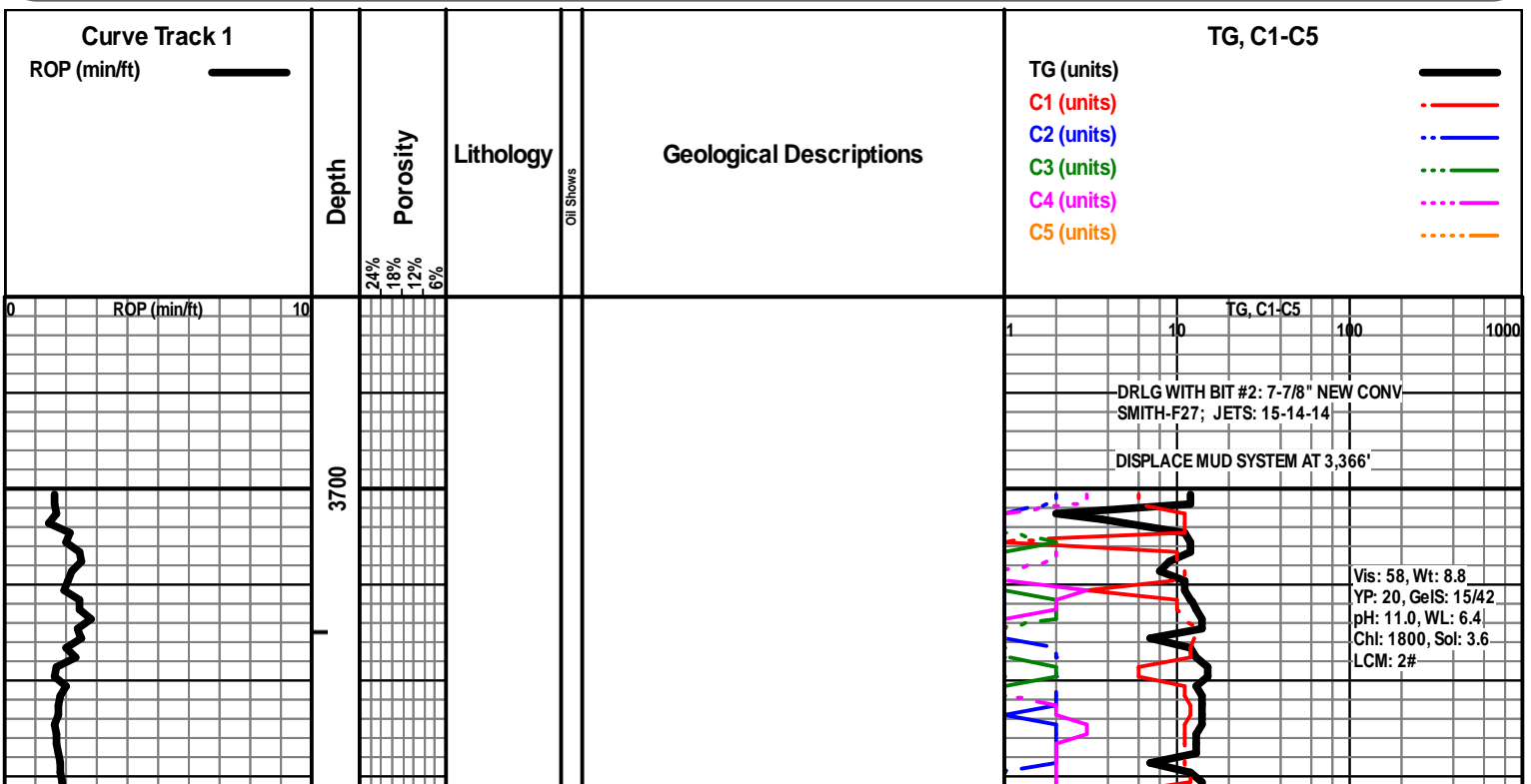
#### INTERVALS

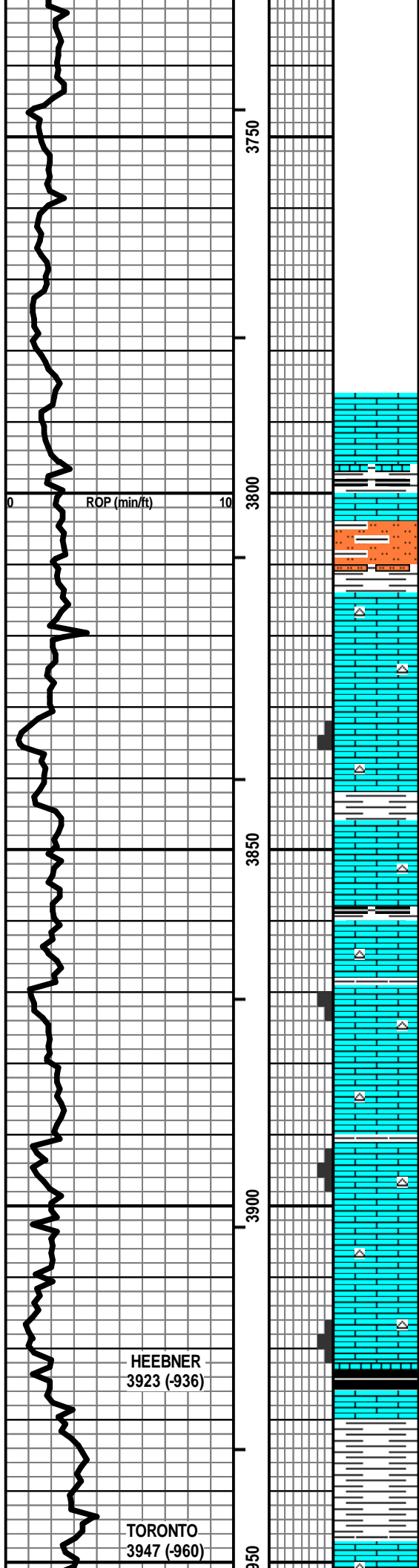
- Core
- Dst

- Dst\_1\_t
- Dst\_1\_b
- Dst

#### EVENTS

- Rft
- Sidewall
- Conn





LS - CRM / TAN / SCAT GY, VF / F XLN, FOSS IN PT, SUBCHKY IN PT, PRED DNS, NS

LS - TAN / BRN / GY, VF / F XLN, FOSS IN PT, CHKY IN PT, PRED DNS, NS W/ SH + SLTST - LT / MED GY

LS - CRM / TAN, F / VF XLN, FOSS + OOL IN PT, SUBCHKY IN PT, PRED DNS, NS W/ CHT - WHT / CRM / GY

LS - CRM / TAN, F / VF XLN, OOL IN PT, SL FOSS, SCAT P / F INTPART POR, SUBCHKY IN PT, SS ASPH + GILS, NO ODOR, SCAT SPTY BLK STN W/ SCAT CHT - AS ABOVE

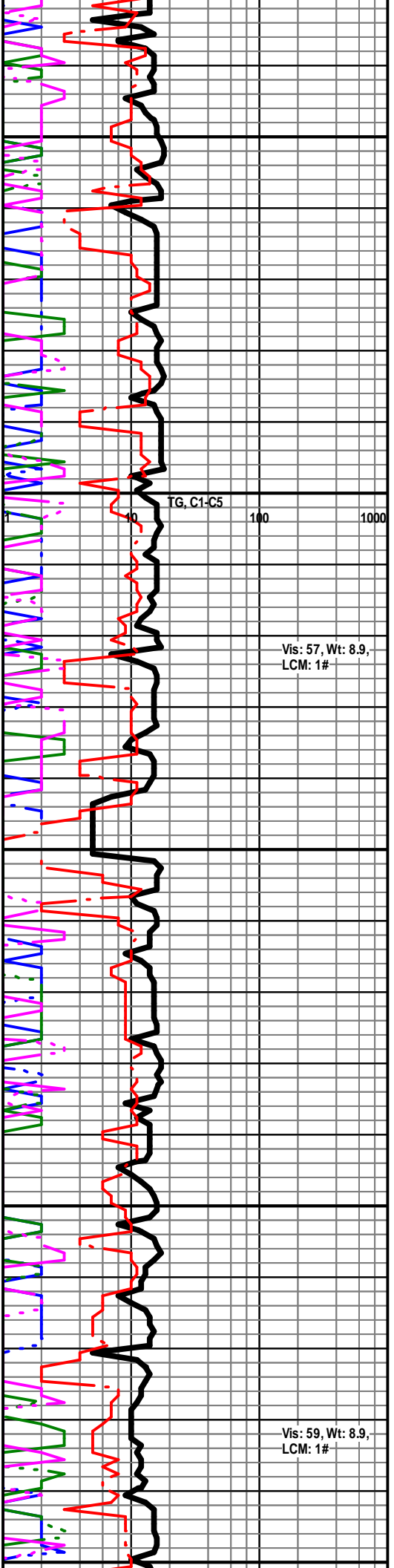
LS - CRM / TAN / SCAT GY, VF / F XLN, OOL + FOSS IN PT, CHKY IN PT, PRED DNS, NS W/ SCAT CHT - AS ABOVE W/ SCAT SH - GY / BLK

LS - CRM / TAN, F / VF XLN, FOSS IN PT, SCAT OOL, P / F PPT + INTXLN POR, SUBCHKY IN PT / DNS, NS W/ CHT - AS ABOVE

LS - TAN / CRM / SCAT BRN, F XLN, FOSS + OOL IN PT, F / G INTXLN + PPT POR, TR VUG POR, SCAT GILS STN, NO ODOR W/ SCAT CHT - AS ABOVE

LS - TAN / BRN / CRM, VF / F XLN, FOSS IN PT, SCAT P / F INTXLN POR, PRED CHKY / DNS, NS W/ SCAT CHT - GY

LS - TAN / BRN, VF / F XLN, SL FOSS, PRED DMS, NS W/ SH - GY / GRN, SLTY IN PT



TG, C1-C5 100 1000

Vis: 57, Wt: 8.9, LCM: 1#

Vis: 59, Wt: 8.9, LCM: 1#

HEEBNER  
3923 (-936)

TORONTO  
3947 (-960)

3750  
3800  
3850  
3900  
3950

ROP (min/ft)

LS - CRM / WHT / SCAT LT GY, VF / F XLN, SCAT M  
REXLN CALC, TR FOSS, TR P INTXLN POR, SUBCHKY  
IN PT, PRED DNS, NS W/ CHT - WHT / LT GY / CRM

LANSING  
3968 (-981)

LS - CRM / TAN, F XLN, OOL, SL FOSS, P / F INTOOL +  
PPT POR, SUBCHKY IN PT / DNS, NS

LS - CRM / TAN, VF / F XLN / SCAT M XLN, OOL IN PT,  
TR P INTXLN POR, PRED DNS, NS

LS - CRM / TAN / SCAT LT GY, F XLN, OOL IN PT, SL  
FOSS, SCAT P / TR F PPT + INTXLN POR, TR VUG POR,  
VSSFO, SS ASPH, NO ODOR, SPTY STN, F / G FLUOR, P /  
G CUT, SCAT BARR POR

LS - CRM / WHT / SCAT TAN, PRED VF / F XLN, SL OOL,  
TR FOSS, SCAT P INTXLN POR, SUBCHKY IN PT, PRED  
DNS, NS

LS - CRM / WHT / SCAT TAN, PRED VF / F XLN, OOL IN  
PT, SCAT P INTXLN + MOLDIC POR, CHKY IN PT / DNS,  
NS

LS - CRM / TAN / SCAT BRN, F XLN, OOL IN PT, TR  
FOSS, TR VP INTXLN POR, PRED DNS, V FT ODOR,  
NSFO, TR SPTY STN

LS - CRM / SCAT TAN, VF / F / SCAT M XLN, TR OOL,  
SCAT P / TR F INTXLN + PPT POR, TR P VUG POR,  
SUBCHKY IN PT / DNS, NS

LS - CRM / LT GY / SCAT TAN, F / VF XLN, OOL IN PT, P /  
F INTXLN POR IN PT, NS

LS - SIM TO ABOVE, SCAT CHKY, PRED DNS, NS

LS - CRM / TAN / GY, F / VF XLN, SL FOSS + OOL, SCAT  
P INTXLN POR, TR P FOSSMOLD POR, CHKY IN PT, NS  
W/ SCAT CHT - GY / TAN

MUNCIE CREEK  
4140 (-1153)

LS - TAN / BRN, VF / F XLN, FOSS IN PT, DNS, NS W/  
CHT - GY / TAN W/ SH - GY / SCAT BLK

LS - CRM / TAN, F / VF XLN, OOL, P INTOOL POR IN PT,  
SCAT CHKY / DNS, NS W/ CHT - LT GY / WHT

LS - CRM / TAN / GY, VF / F XLN, OOL IN PT, P / F INTOOL POR IN PT, NS

A

B

C

D

E

F

G

H

OP (min/ft)

CFS @ 4019'

TG, C1-C5

SHORT TRIP @ 4,019'

Vis: 60, Wt: 8.9,  
LCM: 1#

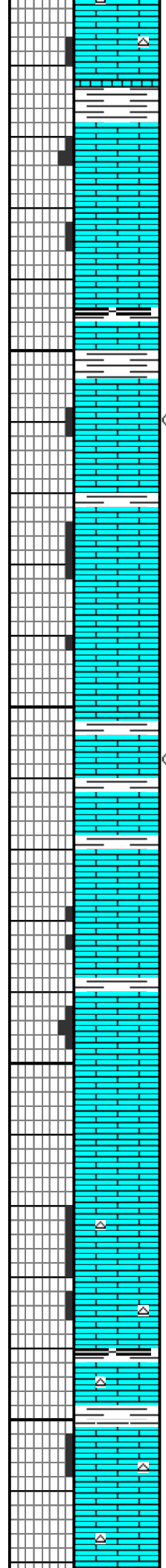
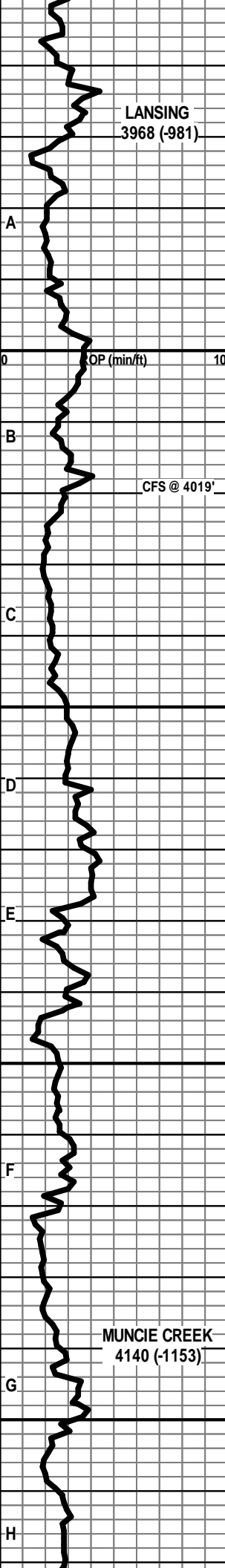
Vis: 57, Wt: 9.0  
YP: 19, GelS: 14/41  
pH: 10.0, WL: 7.2  
Chl: 2300, Sol: 4.9  
LCM: 1#

GAS EXTRACTOR PLUGGING

GAS EXTRACTOR PLUGGING

WORK ON GAS EXTRACTOR

30  
4000  
4050  
4100  
4150



LS - CRM / WHT / SCAT LT GY, VF / F XLN, SCAT M  
REXLN CALC, TR FOSS, TR P INTXLN POR, SUBCHKY  
IN PT, PRED DNS, NS W/ CHT - WHT / LT GY / CRM

LS - CRM / TAN, F XLN, OOL, SL FOSS, P / F INTOOL +  
PPT POR, SUBCHKY IN PT / DNS, NS

LS - CRM / TAN, VF / F XLN / SCAT M XLN, OOL IN PT,  
TR P INTXLN POR, PRED DNS, NS

LS - CRM / TAN / SCAT LT GY, F XLN, OOL IN PT, SL  
FOSS, SCAT P / TR F PPT + INTXLN POR, TR VUG POR,  
VSSFO, SS ASPH, NO ODOR, SPTY STN, F / G FLUOR, P /  
G CUT, SCAT BARR POR

LS - CRM / WHT / SCAT TAN, PRED VF / F XLN, SL OOL,  
TR FOSS, SCAT P INTXLN POR, SUBCHKY IN PT, PRED  
DNS, NS

LS - CRM / WHT / SCAT TAN, PRED VF / F XLN, OOL IN  
PT, SCAT P INTXLN + MOLDIC POR, CHKY IN PT / DNS,  
NS

LS - CRM / TAN / SCAT BRN, F XLN, OOL IN PT, TR  
FOSS, TR VP INTXLN POR, PRED DNS, V FT ODOR,  
NSFO, TR SPTY STN

LS - CRM / SCAT TAN, VF / F / SCAT M XLN, TR OOL,  
SCAT P / TR F INTXLN + PPT POR, TR P VUG POR,  
SUBCHKY IN PT / DNS, NS

LS - CRM / LT GY / SCAT TAN, F / VF XLN, OOL IN PT, P /  
F INTXLN POR IN PT, NS

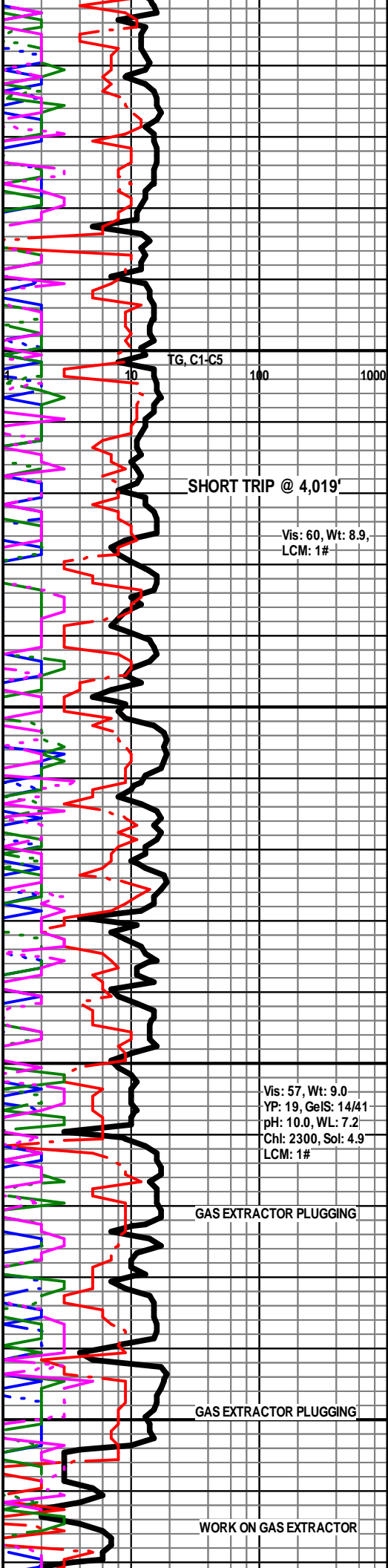
LS - SIM TO ABOVE, SCAT CHKY, PRED DNS, NS

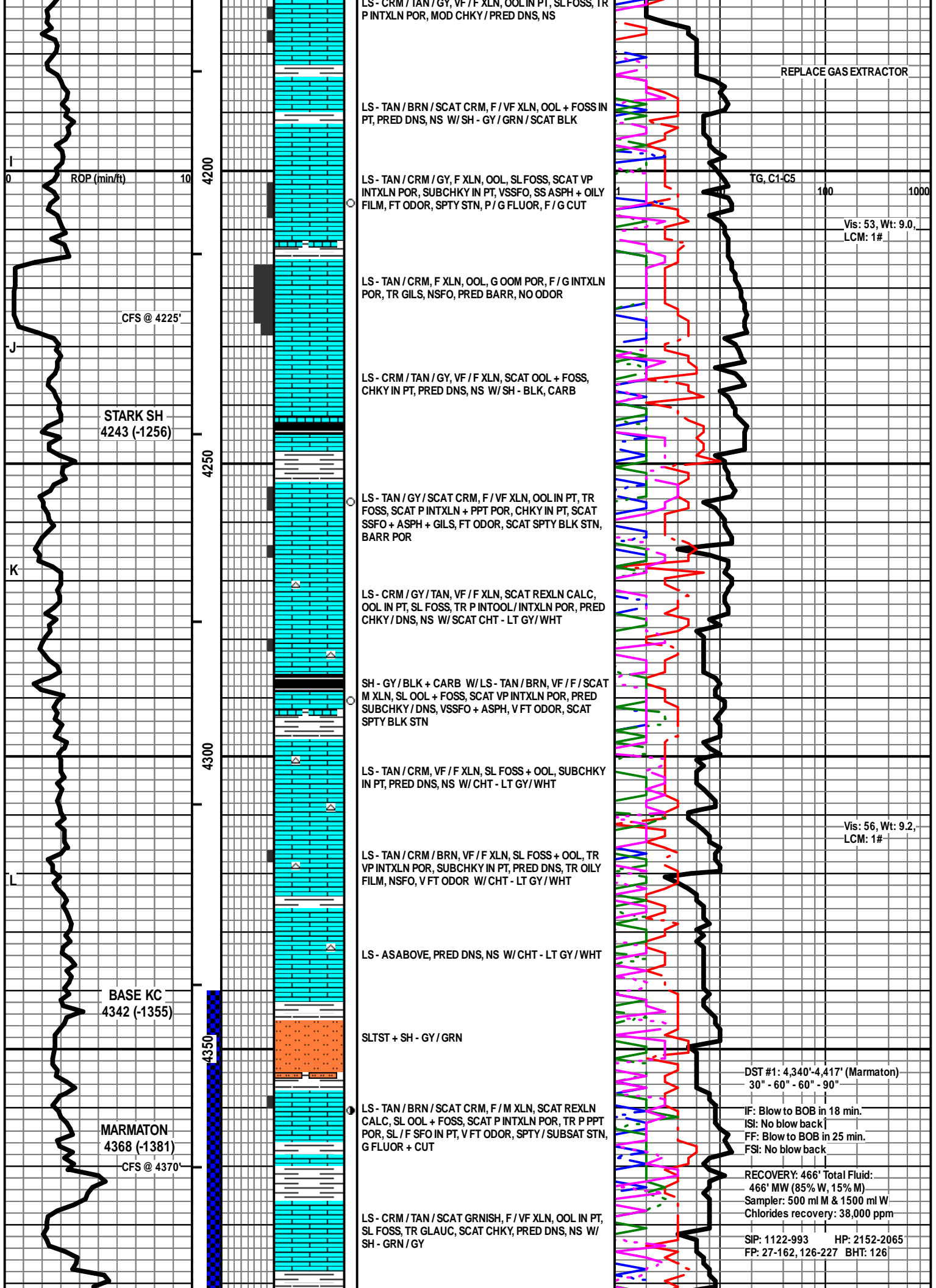
LS - CRM / TAN / GY, F / VF XLN, SL FOSS + OOL, SCAT  
P INTXLN POR, TR P FOSSMOLD POR, CHKY IN PT, NS  
W/ SCAT CHT - GY / TAN

LS - TAN / BRN, VF / F XLN, FOSS IN PT, DNS, NS W/  
CHT - GY / TAN W/ SH - GY / SCAT BLK

LS - CRM / TAN, F / VF XLN, OOL, P INTOOL POR IN PT,  
SCAT CHKY / DNS, NS W/ CHT - LT GY / WHT

LS - CRM / TAN / GY, VF / F XLN, OOL IN PT, P / F INTOOL POR IN PT, NS





ROP (min/ft) 10

4200

CFS @ 4225'

STARK SH  
4243 (-1256)

4250

4300

4350

BASE KC  
4342 (-1355)

MARMATON  
4368 (-1381)

CFS @ 4370'

LS - CRM / TAN / GY, VF / F XLN, OOL IN PT, SL FOSS, TR PINTXLN POR, MOD CHKY / PRED DNS, NS

LS - TAN / BRN / SCAT CRM, F / VF XLN, OOL + FOSS IN PT, PRED DNS, NS W/ SH - GY / GRN / SCAT BLK

LS - TAN / CRM / GY, F XLN, OOL, SL FOSS, SCAT VP INTXLN POR, SUBCHKY IN PT, VSSFO, SS ASPH + OILY FILM, FT ODOR, SPTY STN, P / G FLUOR, F / G CUT

LS - TAN / CRM, F XLN, OOL, G OOM POR, F / G INTXLN POR, TR GILS, NSFO, PRED BARR, NO ODOR

LS - CRM / TAN / GY, VF / F XLN, SCAT OOL + FOSS, CHKY IN PT, PRED DNS, NS W/ SH - BLK, CARB

LS - TAN / GY / SCAT CRM, F / VF XLN, OOL IN PT, TR FOSS, SCAT PINTXLN + PPT POR, CHKY IN PT, SCAT SSFO + ASPH + GILS, FT ODOR, SCAT SPTY BLK STN, BARR POR

LS - CRM / GY / TAN, VF / F XLN, SCAT REXLN CALC, OOL IN PT, SL FOSS, TR P INTOOL / INTXLN POR, PRED CHKY / DNS, NS W/ SCAT CHT - LT GY / WHT

SH - GY / BLK + CARB W/ LS - TAN / BRN, VF / F / SCAT M XLN, SL OOL + FOSS, SCAT VP INTXLN POR, PRED SUBCHKY / DNS, VSSFO + ASPH, V FT ODOR, SCAT SPTY BLK STN

LS - TAN / CRM, VF / F XLN, SL FOSS + OOL, SUBCHKY IN PT, PRED DNS, NS W/ CHT - LT GY / WHT

LS - TAN / CRM / BRN, VF / F XLN, SL FOSS + OOL, TR VP INTXLN POR, SUBCHKY IN PT, PRED DNS, TR OILY FILM, NSFO, V FT ODOR W/ CHT - LT GY / WHT

LS - ASABOVE, PRED DNS, NS W/ CHT - LT GY / WHT

SLTST + SH - GY / GRN

LS - TAN / BRN / SCAT CRM, F / M XLN, SCAT REXLN CALC, SL OOL + FOSS, SCAT PINTXLN POR, TR P PPT POR, SL / F SFO IN PT, V FT ODOR, SPTY / SUBSAT STN, G FLUOR + CUT

LS - CRM / TAN / SCAT GRNISH, F / VF XLN, OOL IN PT, SL FOSS, TR GLAUC, SCAT CHKY, PRED DNS, NS W/ SH - GRN / GY

REPLACE GAS EXTRACTOR

TG, C1-C5 100 1000

Vis: 53, Wt: 9.0, LCM: 1#

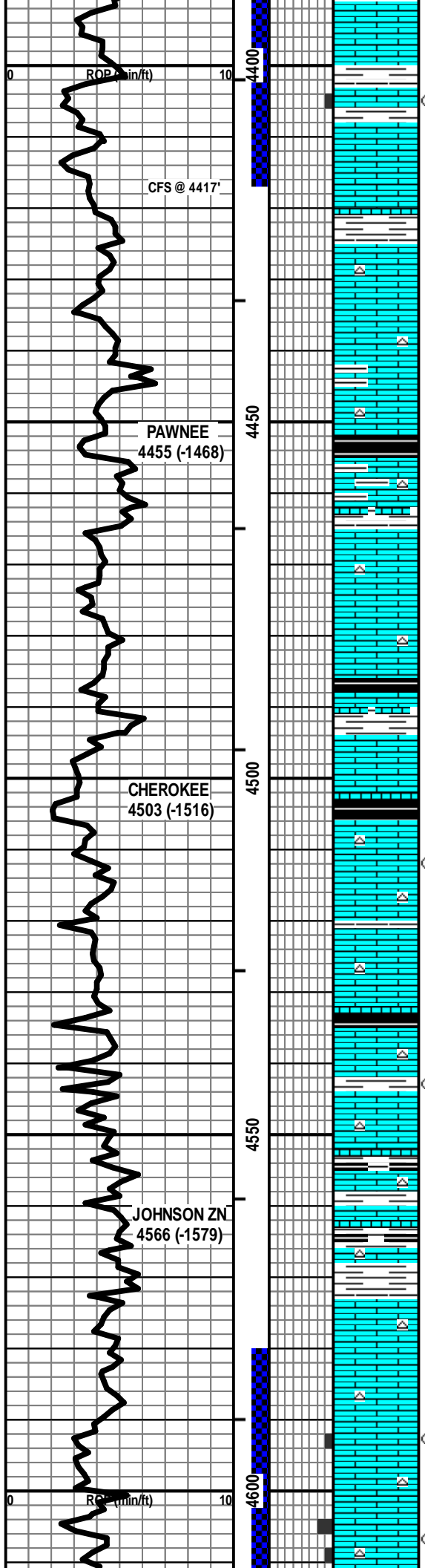
Vis: 56, Wt: 9.2, LCM: 1#

DST #1: 4,340'-4,417' (Marmaton)  
30" - 60" - 60" - 90"

IF: Blow to BOB in 18 min.  
ISI: No blow back  
FF: Blow to BOB in 25 min.  
FSI: No blow back

RECOVERY: 466' Total Fluid:  
466' MW (85% W, 15% M)  
Sampler: 500 ml M & 1500 ml W  
Chlorides recovery: 38,000 ppm

SIP: 1122-993 HP: 2152-2065  
FP: 27-162, 126-227 BHT: 126



LS - CRM / TAN / GY, VF / F XLN, SL OOL, TR FOSS, SCAT CHKY, PRED DNS, NS

LS - CRM / TAN, F / SCAT M XLN, SCAT REXLN CALC, OOL + FOSS IN PT, P / F INTXLN POR, TR P VUG POR, SCAT CHKY, SL / F SFO IN PT, SSGB, V FT ODOR, SCAT SPTY STN, G FLUOR, PRED G CUT W/LS - CRM / TAN, F / VF XLN, SCAT REXLN CALC, PRED SUBCHKY / DNS, NS

LS - TAN / BRN, F / VF / CRYPTO XLN, FOSS IN PT, PRED DNS, NS W/ SCAT CHT - GY

LS - TAN / GY / CRM, F / VF XLN, FOSS IN PT, SUBCHKY IN PT, PRED DNS, NS W/ CHT - GY / CRM / TAN

LS - CRM / TAN / SCAT BRN, F / VF / CRYPTO XLN, SL FOSS IN PT, SCAT CHKY, PRED DNS, NS W/ CHT - GY W/ SH - GY / SCAT GRN

LS - CRM / TAN, F / VF XLN, SL FOSS IN PT, SCAT CHKY, PRED DNS, NS W/ CHT - GY

LS - TAN / BRN / SCAT CRM, VF / F XLN, FOSS IN PT, SCAT OOL, SUBCHKY IN PT, PRED DNS, NS W/ SCAT SH - GY / BLK

LS - TAN / BRN / SCAT CRM, F / VF XLN, OOL IN PT, SL FOSS, TR VP INTOOL POR, PRED DNS, TR FO, NO ODOR, TR SPTY STN W/ CHT - GY / WHT / CRM

LS - TAN / BRN / SCAT CRM, F / VF XLN, OOL IN PT, SL FOSS, SUBCHKY IN PT, PRED DNS, NS W/ CHT - GY / WHT

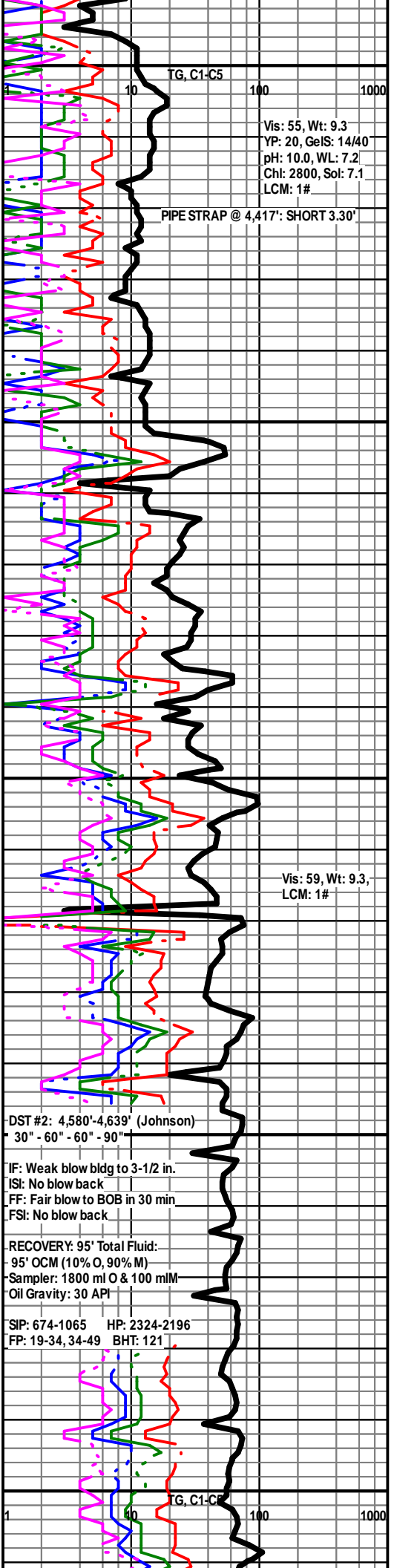
LS - CRM / TAN, VF / F XLN, SCAT OOL + FOSS, SUBCHKY IN PT, TR VP INTXLN POR, PRED DNS, TR FO, NO ODOR, TR SPTY STN W/ CHT - GY

LS - CRM / TAN / BRN, MOT IN PT, VF / F XLN, OOL IN PT, SL FOSS, SUBCHKY IN PT, PRED DNS, NS W/ CHT - GY W/ SH - GY / BLK

LS - TAN / BRN / SCAT CRM, VF / F XLN, FOSS IN PT, SCAT OOL, PRED DNS, NS W/ SCAT CHT - GY / WHT / CRM

LS - TAN / BRN / CRM, F / VF XLN, SCAT REXLN CALC, FOSS + OOL IN PT, SCAT P / TR F INTXLN POR, PRED DNS, SL / F SFO + GB, FT ODOR, SCAT SPTY STN, G FLUOR + CUT W/ CHT - GY / TAN / SCAT WHT

LS - TAN / CRM / BRN / SCAT GY, F / VF XLN, OOL IN PT, SL FOSS, SCAT P / F INTXLN + PPT POR, SL / F SFO + GB, G ODOR, SCAT SPTY / TR SAT STN, G FLUOR + CUT W/ CHT - AA



DST #2: 4,580'-4,639' (Johnson)  
30" - 60" - 60" - 90"

IF: Weak blow bldg to 3-1/2 in.  
IS: No blow back  
FF: Fair blow to BOB in 30 min  
FS: No blow back

RECOVERY: 95' Total Fluid:  
95' OCM (10% O, 90% M)  
Sampler: 1800 ml O & 100 ml M  
Oil Gravity: 30 API

SIP: 674-1065 HP: 2324-2196  
FP: 19-34, 34-49 BHT: 121

CST W/CHT-AA

LS - CRM / TAN / BRN, F / VF XLN, SCAT REXLN CALC, SL OOL + FOSS, SUBCHKY IN PT, SCAT P / F INTXLN + PPT POR, TR P VUG POR, SL / F SFO + GB, G ODOR, SCAT SPTY / TR SAT STN, G FLUOR + CUT W/CHT-AA

LS - CRM / TAN / BRN, SIM TO ABOVE, PRED DNS, NS W/SCAT CHT - GY/TAN W/SCAT SH - GY/BLK

PRED SH - GY / GRN / SCAT BLK

PRED SH - GY / GRN / SCAT BLK, SLTYIN PT W/TR SS - GY/BLK, VF GR, P / NO INTGR POR, NS

SS - LT GY, VF / F GR, W SRTD, SA / SR, SIL CEM, SCAT CHL, P / G INTGR POR, NS W/SCAT SS - LT GY, F / M GR, F SRTD, SA / R, SIL CEM, F / G INTGR POR, NS

ABNT SS - AS ABOVE W/ ABNT SH - GRN / GY W/ SCAT LS - WHT / CRM / SCAT TAN, VF XLN, V AREN, SL OOL IN PT, CHKY / DNS, NS W/SCAT CHT - GY / TAN

LS - WHT / CRM, VF XLN, OOL, V AREN, CHKY / DNS, NS W/ ABNT SS & SH - AS ABOVE W/ TR CHT - GY

LS - TAN / CRM, VF / F XLN, OOL IN PT, SCAT P INTOOL POR, CHKY IN PT, PRED DNS, NS

LS - TAN / CRM, VF / F XLN, OOL IN PT, CHKY IN PT, PRED DNS, NS

LS - TAN / CRM, VF / F XLN, OOL IN PT, CHKY IN PT, PRED DNS, NS

TOTAL DEPTH 4756 (-1769)

Vis: 54  
Wt: 9.4  
YP: 18  
GelS: 12/36  
pH: 9.5  
WL: 8.0  
Chl: 3400  
Sol: 7.4  
LCM: 1#

Vis: 50, Wt: 9.3,  
LCM: 1#

MORROW SH  
4637 (-1650)

CFS @ 4672'  
MISS ST GEN  
4675 (-1688)

ST LOUIS  
4715 (-1728)

4650

4700

4750