



DRILL STEM TEST REPORT

Prepared For: **Stelbar Oil Corp**

1625 N Waterfront PKWY
Wichita, KS 67206-6602

ATTN: Dave Goldak

Burgess #1-7

7-17s-32w Scott,KS

Start Date: 2015.02.07 @ 19:11:11

End Date: 2015.02.08 @ 02:50:11

Job Ticket #: 61466 DST #: 1

Trilobite Testing, Inc
1515 Commerce Parkway Hays, KS 67601
ph: 785-625-4778 fax: 785-625-5620

Printed: 2015.02.16 @ 09:41:12



**TRILOBITE
TESTING, INC**

DRILL STEM TEST REPORT

Stelbar Oil Corp
1625 N Waterfront PKWY
Wichita, KS 67206-6602
ATTN: Dave Goldak

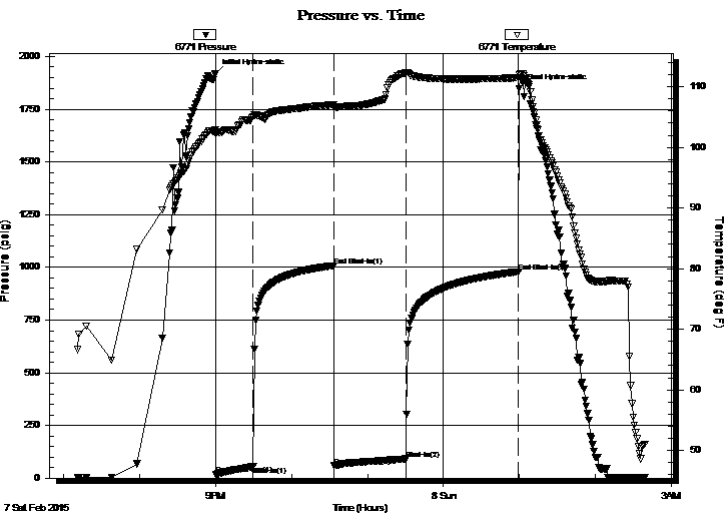
7-17s-32w Scott,KS
Burgess #1-7
Job Ticket: 61466 **DST#: 1**
Test Start: 2015.02.07 @ 19:11:11

GENERAL INFORMATION:

Formation: **LKC B**
Deviated: No Whipstock: ft (KB)
Time Tool Opened: 21:00:11
Time Test Ended: 02:50:11
Interval: **3998.00 ft (KB) To 4026.00 ft (KB) (TVD)**
Total Depth: 4026.00 ft (KB) (TVD)
Hole Diameter: 7.88 inches Hole Condition: Fair
Test Type: Conventional Bottom Hole (Initial)
Tester: Shane McBride
Unit No: 85
Reference Elevations: 2986.00 ft (KB)
2981.00 ft (CF)
KB to GR/CF: 5.00 ft

Serial #: 6771 Outside
Press@RunDepth: 91.29 psig @ 3999.00 ft (KB) Capacity: 8000.00 psig
Start Date: 2015.02.07 End Date: 2015.02.08 Last Calib.: 2015.02.08
Start Time: 19:11:11 End Time: 02:39:11 Time On Btm: 2015.02.07 @ 20:59:56
Time Off Btm: 2015.02.08 @ 00:59:41

TEST COMMENT: 3 1/4" blow
No return
4" in blow
No return



PRESSURE SUMMARY

Time (Min.)	Pressure (psig)	Temp (deg F)	Annotation
0	1920.36	102.89	Initial Hydro-static
1	18.00	102.22	Open To Flow (1)
30	56.19	105.12	Shut-In(1)
94	1007.93	107.04	End Shut-In(1)
94	58.24	106.55	Open To Flow (2)
151	91.29	112.29	Shut-In(2)
240	979.01	111.49	End Shut-In(2)
240	1849.49	111.91	Final Hydro-static

Recovery

Length (ft)	Description	Volume (bbl)
120.00	s m c w 15% m 85% w	0.59
30.00	m c w 35% m 65% w	0.40
0.00	show of free oil on top 2" in	0.00

Gas Rates

	Choke (inches)	Pressure (psig)	Gas Rate (Mcf/d)



**TRILOBITE
TESTING, INC**

DRILL STEM TEST REPORT

TOOL DIAGRAM

Stelbar Oil Corp

7-17s-32w Scott,KS

1625 N Waterfront PKWY
Wichita, KS 67206-6602

Burgess #1-7

Job Ticket: 61466

DST#: 1

ATTN: Dave Goldak

Test Start: 2015.02.07 @ 19:11:11

Tool Information

Drill Pipe:	Length: 3873.00 ft	Diameter: 3.80 inches	Volume: 54.33 bbl	Tool Weight: 1500.00 lb
Heavy Wt. Pipe:	Length: 0.00 ft	Diameter: 0.00 inches	Volume: 0.00 bbl	Weight set on Packer: 25000.00 lb
Drill Collar:	Length: 122.00 ft	Diameter: 2.25 inches	Volume: 0.60 bbl	Weight to Pull Loose: 90000.00 lb
			<u>Total Volume: 54.93 bbl</u>	Tool Chased 0.00 ft
Drill Pipe Above KB:	28.00 ft			String Weight: Initial 69000.00 lb
Depth to Top Packer:	3998.00 ft			Final 70000.00 lb
Depth to Bottom Packer:	ft			
Interval between Packers:	28.00 ft			
Tool Length:	59.00 ft			
Number of Packers:	2	Diameter: 6.75 inches		

Tool Comments:

Tool Description

Length (ft) Serial No. Position Depth (ft) Accum. Lengths

Tool Description	Length (ft)	Serial No.	Position	Depth (ft)	Accum. Lengths
Change Over Sub	1.00			3968.00	
Shut In Tool	5.00			3973.00	
Sampler	3.00			3976.00	
Hydraulic tool	5.00			3981.00	
Jars	5.00			3986.00	
Safety Joint	3.00			3989.00	
Packer	5.00			3994.00	31.00 Bottom Of Top Packer
Packer	4.00			3998.00	
Stubb	1.00			3999.00	
Recorder	0.00	6771	Outside	3999.00	
Recorder	0.00	8844	Inside	3999.00	
Perforations	22.00			4021.00	
Bullnose	5.00			4026.00	28.00 Bottom Packers & Anchor

Total Tool Length: 59.00



**TRILOBITE
TESTING, INC**

DRILL STEM TEST REPORT

FLUID SUMMARY

Stelbar Oil Corp

7-17s-32w Scott,KS

1625 N Waterfront PKWY
Wichita, KS 67206-6602

Burgess #1-7

Job Ticket: 61466

DST#: 1

ATTN: Dave Goldak

Test Start: 2015.02.07 @ 19:11:11

Mud and Cushion Information

Mud Type: Gel Chem

Cushion Type:

Oil API:

0 deg API

Mud Weight: 9.00 lb/gal

Cushion Length:

ft

Water Salinity:

24000 ppm

Viscosity: 56.00 sec/qt

Cushion Volume:

bbbl

Water Loss: 5.60 in³

Gas Cushion Type:

Resistivity: 0.00 ohm.m

Gas Cushion Pressure:

psig

Salinity: 2000.00 ppm

Filter Cake: 1.00 inches

Recovery Information

Recovery Table

Length ft	Description	Volume bbbl
120.00	s m c w 15%m 85%w	0.590
30.00	m c w 35%m 65%w	0.403
0.00	show of free oil on top 2" in	0.000

Total Length: 150.00 ft Total Volume: 0.993 bbl

Num Fluid Samples: 0

Num Gas Bombs: 0

Serial #:

Laboratory Name:

Laboratory Location:

Recovery Comments: rw .348 @ 57°F= 24,000

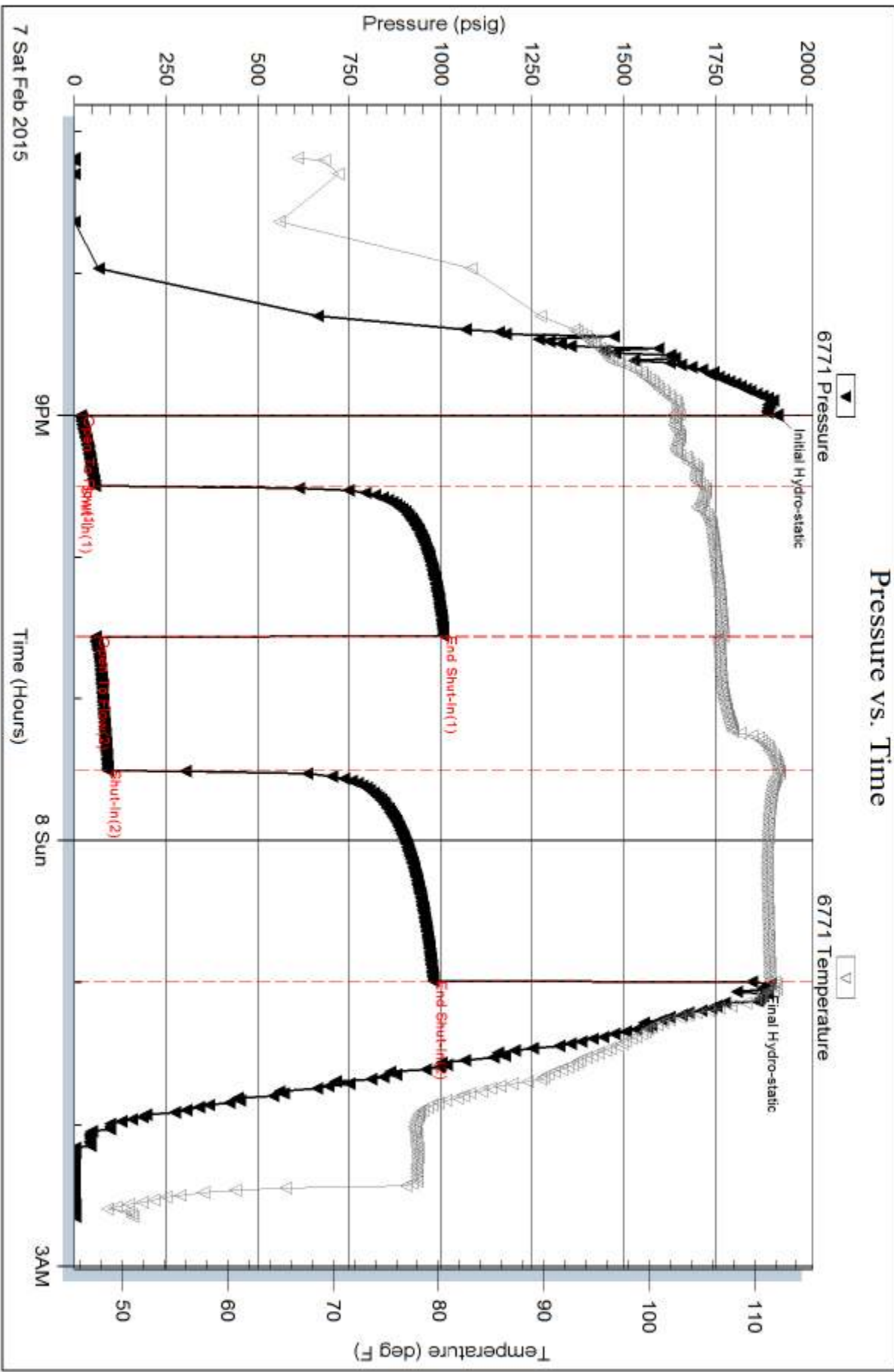
sampler 2000 ml water trace of mud 180 psi

Serial #: 6771

Outside Stellar Oil Corp

Burgess #1-7

DST Test Number: 1



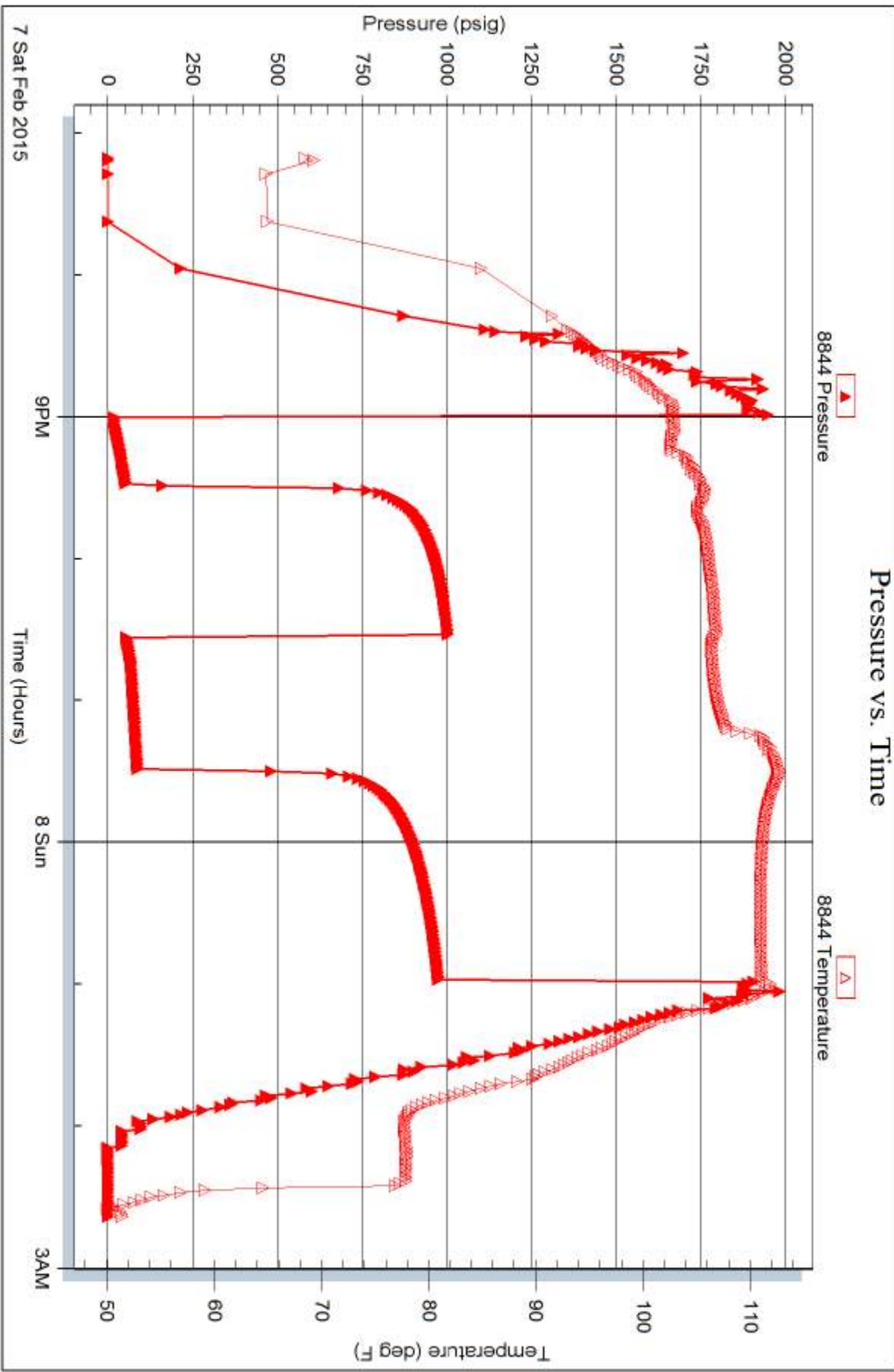
Serial #: 8844

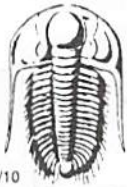
Inside

Stelbar Oil Corp

Burgess #1-7

DST Test Number: 1





TRILOBITE TESTING INC.

1515 Commerce Parkway • Hays, Kansas 67601

Test Ticket

NO. 61466

Well Name & No. Burgess #1-7 Test No. #1 Date 2/18/15
 Company Helbar Oil Corp Elevation 2986 KB 2981 GL
 Address 1625 N. Waterfront Pkwy, Wichita, KS 67206-6602
 Co. Rep / Geo. Dave Goldak Rig WW#8
 Location: Sec. 7 Twp. 17S Rge. 32W Co. Scott State Ks

Interval Tested 3998 4026 Zone Tested B
 Anchor Length 28 Drill Pipe Run 3873' Mud Wt. 8.8
 Top Packer Depth 3993 Drill Collars Run 122' Vis 54
 Bottom Packer Depth 3998 Wt. Pipe Run — WL 8.6
 Total Depth 4026 Chlorides 2000 ppm System LCM #2

Blow Description 3/4" in blow
No return
4" in blow
No return

Rec	Feet of	%gas	%oil	%water	%mud
<u>120</u>	<u>Smcw</u>		<u>85</u>	<u>15</u>	
<u>30</u>	<u>mcw</u>		<u>45</u>	<u>35</u>	
	<u>Show of free oil on top</u>				
	<u>2" in</u>				

Rec Total 150' BHT 112° Gravity — API RW .348 @ 57° F Chlorides 24000 ppm

(A) Initial Hydrostatic <u>1920</u>	<input checked="" type="checkbox"/> Test <u>1150</u>	T-On Location <u>18:20</u>
(B) First Initial Flow <u>18</u>	<input checked="" type="checkbox"/> Jars <u>250</u>	T-Started <u>19:05</u>
(C) First Final Flow <u>54</u>	<input checked="" type="checkbox"/> Safety Joint <u>75</u>	T-Open <u>20:58</u>
(D) Initial Shut-In <u>1007</u>	<input checked="" type="checkbox"/> Circ Sub <u>n/c</u>	T-Pulled <u>00:58</u>
(E) Second Initial Flow <u>58</u>	<input type="checkbox"/> Hourly Standby	T-Out <u>02:50</u>
(F) Second Final Flow <u>91</u>	<input checked="" type="checkbox"/> Mileage <u>18 RS 18</u>	Comments <u>Released 3/10/15</u>
(G) Final Shut-In <u>979</u>	<input checked="" type="checkbox"/> Sampler <u>250</u>	<u>tool 2/11/15 @ 04:30</u>
(H) Final Hydrostatic <u>1849</u>	<input type="checkbox"/> Straddle	

Initial Open 30
 Initial Shut-In 60
 Final Flow 60
 Final Shut-In 90

Ruined Shale Packer
 Ruined Packer
 Extra Copies
 Sub Total 800
 Total 2543
 MP/DST Disc't YES
 Sub Total 1743

Approved By [Signature] Our Representative [Signature]
 Trilobite Testing Inc. shall not be liable for damaged of any kind of the property or personnel of the one for whom a test is made, or for any loss suffered or sustained, directly or indirectly, through the use of its equipment, or its statements or opinion concerning the results of any test, tools lost or damaged in the hole shall be paid for at cost by the party for whom the test is made.

