

GEOLOGIC REPORT

DAVID J. GOLDAK

WICHITA, KANSAS
Scale 1:240 (5"=100') Imperial
Measured Depth Log

Well Name: Burgess #1-7
Location: Section 7 - T17S - R32W
License Number: API: 15-171-21126
Spud Date: 02 / 03 / 2015
Surface Coordinates: 457' FSL and 1044' FWL
NE - SE - SW - SW
Region: Scott Co., KS
Drilling Completed: 02 / 11 / 2015
Bottom Hole Coordinates:
Ground Elevation (ft): 2981' K.B. Elevation (ft): 2986'
Logged Interval (ft): 3700' To: 4830' Total Depth (ft): 4830'
Formation: Mississippian - St Louis
Type of Drilling Fluid: Chemical - Mud-Co

Printed by MUD.LOG from WellSight Systems 1-800-447-1534 www.WellSight.com

OPERATOR

Company: Stelbar Oil Corporation
Address: 1625 N. Waterfront Pkwy., Suite 200
Wichita, Kansas 67206-6602

GEOLOGIST

Name: David J. Goldak
Company: D. J. GOLDAK, INC.
Address: 155 N. Market, Suite 710
Wichita, Kansas 67202

General Info

CONTRACTOR: WW Drilling, Rig #8

BIT RECORD:

No.	Size	Make	Jets	Out	Feet	Hours
1	12-1/4	Smith-?	15-14-14	306	306	2.75
2	7-7/8	Smith-F27	15-14-14	4830	4524	115.00

SURVEYS: 306'-0.75, 4026'-1.00, 4830'-1.25

GENERAL DRILLING & PUMP INFORMATION:

Drilling with 8 stands of collars (6.25"x2.25"): 476.46'
Drilling with 38,000 lbs on bit and 80-85 RPM.
Pumping 57 S/M; 7.35 B/M; 800-900 psi at the standpipe.

Daily Status

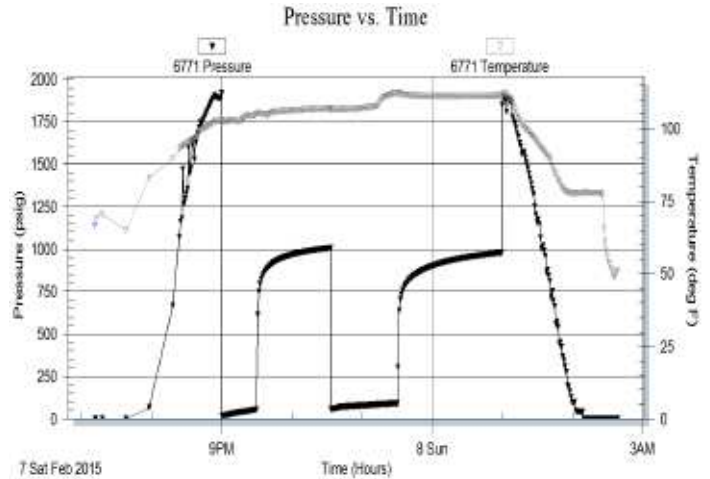
02/03/15 - Spud at 3:15 PM; Set 8-5/8" csg at 305'
 02/04/15 - 457' Drilling
 02/05/15 - 2,555' Drilling
 02/06/15 - 3,361' Drilling; Displace mud @ 3,528'
 02/07/15 - 3,945' Drilling; DST #1 @ 4,026'
 02/08/15 - 4,065' Drilling
 02/09/15 - 4,479' Drilling
 02/10/15 - 4,815' Drilling; RTD 4,830' @ 7:55 AM
 02/11/15 - 4,830' Preparing to plug

DST #1: 3,998' - 4,026' (LKC "B")
 30" - 60" - 60" - 60"

IF: Surface blow building to 3-1/4 inches
ISI: No blow back
FF: Surface blow building to 4 inches
FSI: No blow back

RECOVERY: 150' Total Fluid, consisting of:
 30' MCW (65% W, 35% M)
 120' SMCW (85% W, 15% M)
 (show of free oil on top)
Sampler: Tr Mud & 2000 ml Water @ 180 psi
Chlorides recovery: 24,000 ppm

SIP: 1008-979; **FP:** 18-56, 58-91; **HP:** 1920-1849; **BHT:** 112



ROCK TYPES

<ul style="list-style-type: none"> Anhy Bent Brec Cht Clyst Coal Congl Dol 	<ul style="list-style-type: none"> Gyp Igne Lmst Meta Mrlst Salt Shale Shcol 	<ul style="list-style-type: none"> Shgy Sltst Ss Till Carb sh Dol Dtd Gry sh 	<ul style="list-style-type: none"> Sandylms Shale Sltstn Shlyslts SltysH Lms
--	--	--	--

ACCESSORIES

MINERAL

- Anhy
- Arggrn
- Arg
- Bent
- Bit
- Brecfrag
- Calc
- Carb
- Chtdk
- Chtlt
- Dol
- Feldspar
- Ferrpel
- Ferr
- Glau
- Gyp
- Hvymin
- Kaol
- Marl
- Minxl
- Nodule
- Phos
- Pyr



- Salt
- Sandy
- Silt
- Sil
- Sulphur
- Tuff
- Chlorite
- Dol
- Sand
- Silty

FOSSIL

- Algae
- Amph
- Belm
- Bioclst
- Brach
- Bryozoa
- Cephal
- Coral
- Crin
- Echin
- Fish
- Foram



- Fossil
- Gastro
- Oolite
- Ostra
- Pelec
- Pellet
- Pisolite
- Plant
- Strom
- Fuss
- Oomold

STRINGER

- Anhy
- Arg
- Bent
- Coal
- Dol
- Gyp
- Ls
- Mrst
- Sltstrg
- Ssstrg
- Carbsh



- Clystn
- Dol
- Grysh
- Gryslt
- Lms
- Sandylms
- Sh
- Sltstn

TEXTURE

- Boundst
- Chalky
- Cryxln
- Earthy
- Finexln
- Grainst
- Lithogr
- Microxln
- Mudst
- Packst
- Wackest

OTHER SYMBOLS

POROSITY TYPE

- Earthy
- Fenest
- Fracture
- Inter
- Moldic
- Organic
- Pinpoint
- Vuggy

SORTING

- Well
- Moderate
- Poor

ROUNDING

- Rounded
- Subrnd
- Subang
- Angular

OIL SHOWS

- Even
- Spotted
- Ques
- Dead
- Gas show

INTERVALS

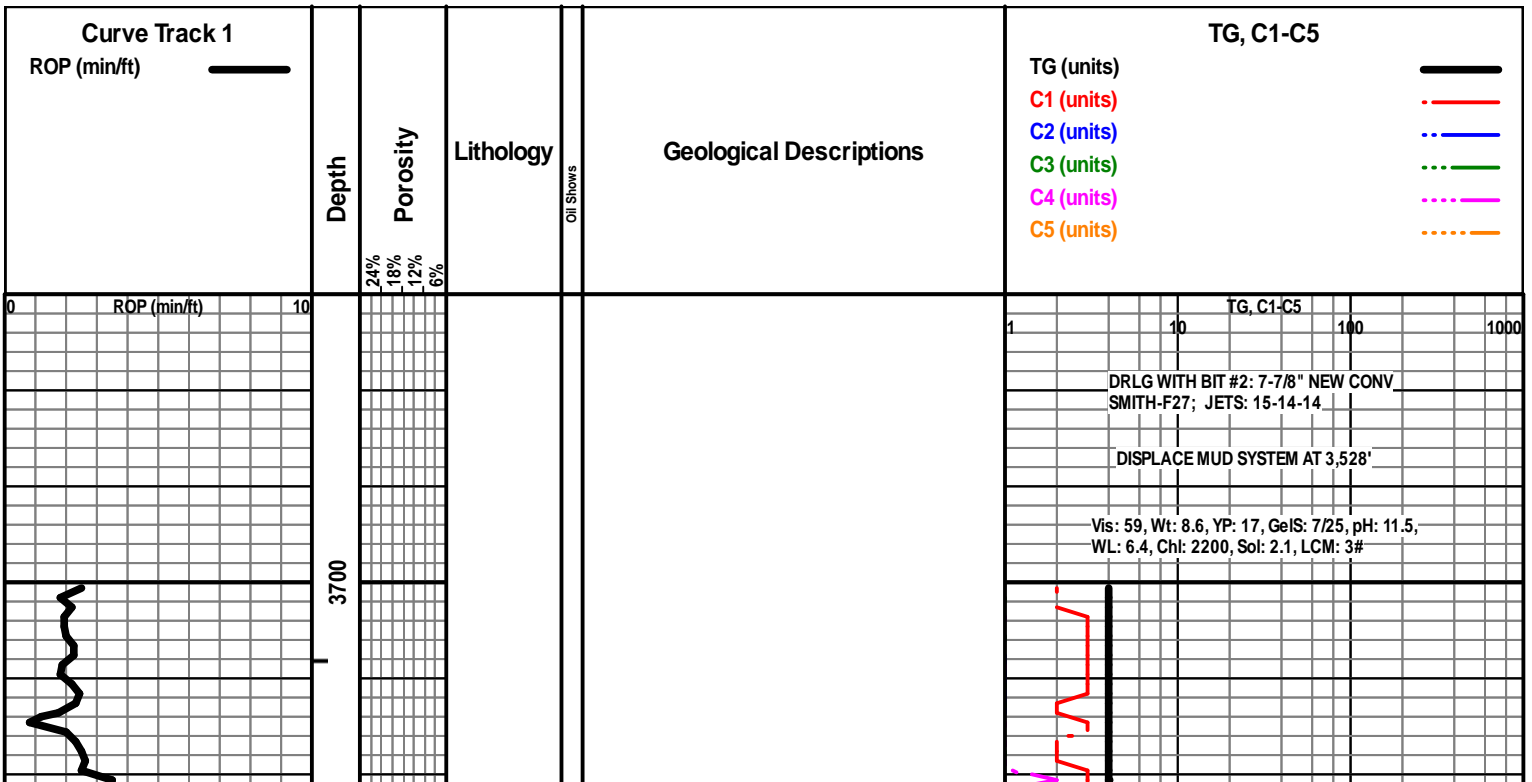
- Core
- Dst

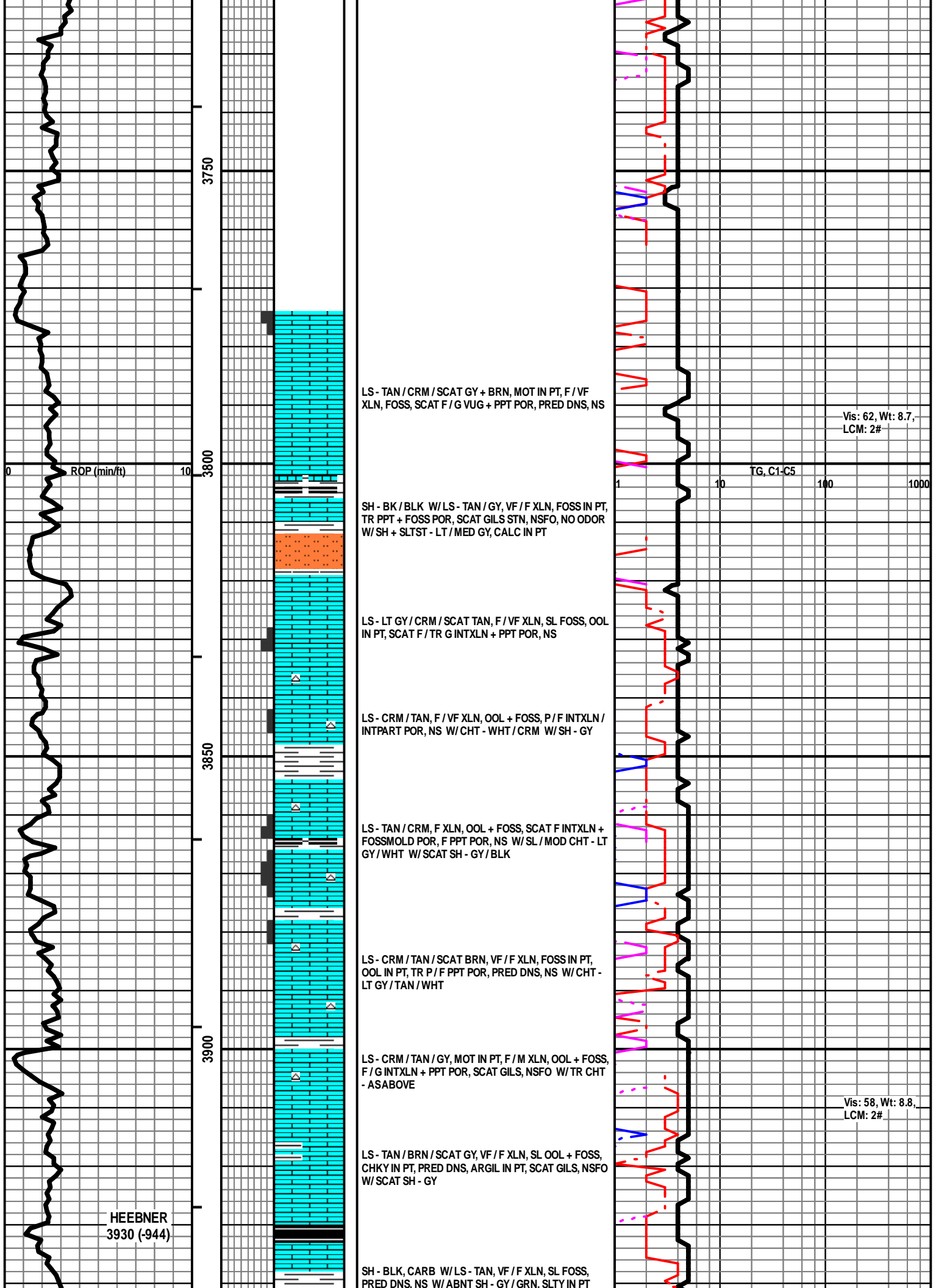


- Dst_1_t
- Dst_1_b
- Dst

EVENTS

- Rft
- Sidewall
- Conn





3750

3800

3850

3900

LS - TAN / CRM / SCAT GY + BRN, MOT IN PT, F / VF XLN, FOSS, SCAT F / G VUG + PPT POR, PRED DNS, NS

Vis: 62, Wt: 8.7, LCM: 2#

SH - BK / BLK W/LS - TAN / GY, VF / F XLN, FOSS IN PT, TR PPT + FOSS POR, SCAT GILS STN, NSFO, NO ODOR W/SH + SLTST - LT / MED GY, CALC IN PT

TG, C1-C5

LS - LT GY / CRM / SCAT TAN, F / VF XLN, SL FOSS, OOL IN PT, SCAT F / TR G INTXLN + PPT POR, NS

LS - CRM / TAN, F / VF XLN, OOL + FOSS, P / F INTXLN / INTPART POR, NS W/CHT - WHT / CRM W/SH - GY

LS - TAN / CRM, F XLN, OOL + FOSS, SCAT F INTXLN + FOSSMOLD POR, F PPT POR, NS W/SL / MOD CHT - LT GY / WHT W/SCAT SH - GY / BLK

LS - CRM / TAN / SCAT BRN, VF / F XLN, FOSS IN PT, OOL IN PT, TR P / F PPT POR, PRED DNS, NS W/CHT - LT GY / TAN / WHT

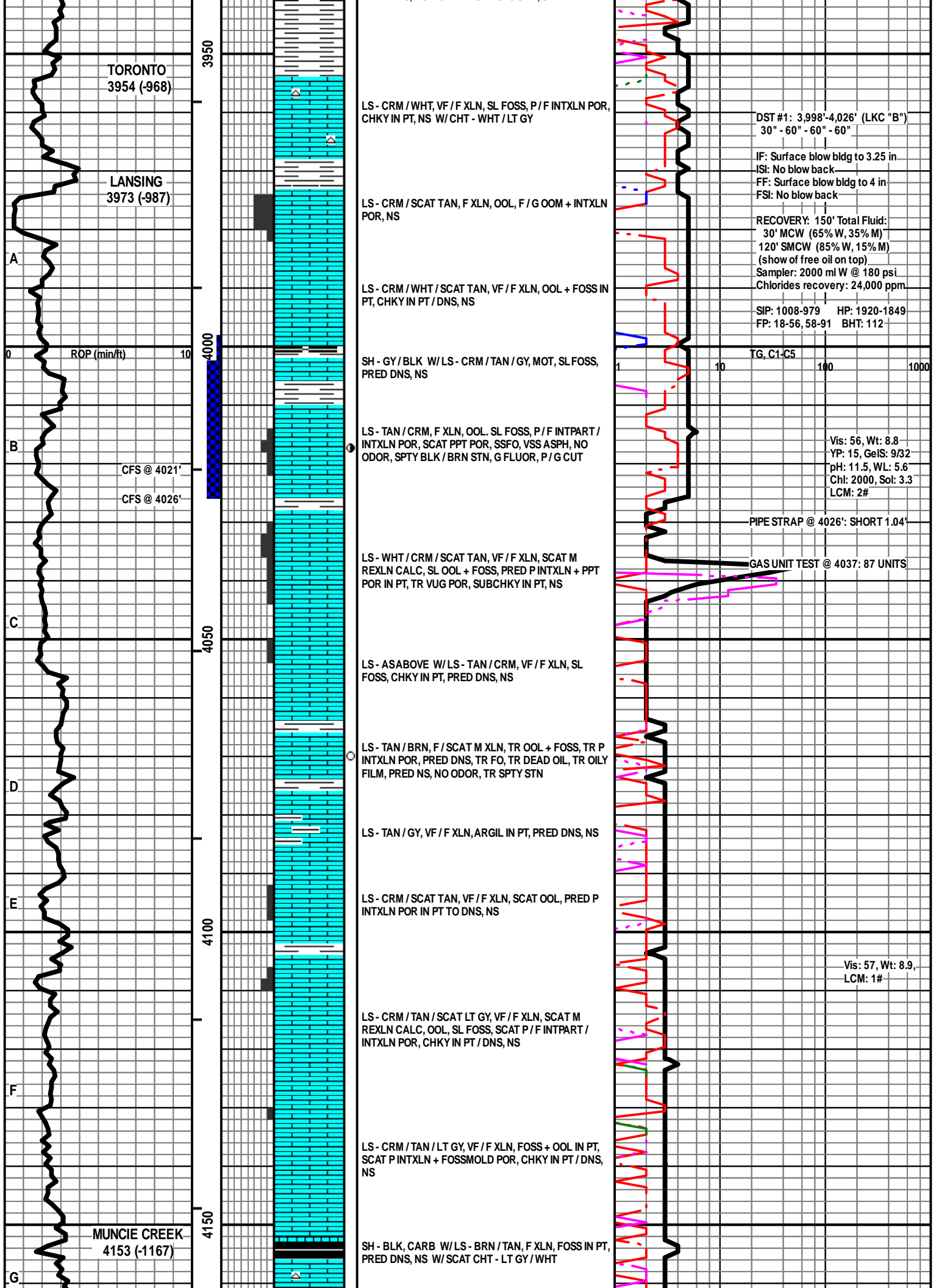
LS - CRM / TAN / GY, MOT IN PT, F / M XLN, OOL + FOSS, F / G INTXLN + PPT POR, SCAT GILS, NSFO W/TR CHT - ASABOVE

Vis: 58, Wt: 8.8, LCM: 2#

LS - TAN / BRN / SCAT GY, VF / F XLN, SL OOL + FOSS, CHKY IN PT, PRED DNS, ARGIL IN PT, SCAT GILS, NSFO W/SCAT SH - GY

HEEBNER
3930 (-944)

SH - BLK, CARB W/LS - TAN, VF / F XLN, SL FOSS, PRED DNS, NS W/ABNT SH - GY / GRN, SLTY IN PT



TORONTO
3954 (-968)

LANSING
3973 (-987)

A

B

C

D

E

F

G

LS - CRM / WHT, VF / F XLN, SL FOSS, P / F INTXN POR, CHKY IN PT, NS W / CHT - WHT / LT GY

LS - CRM / SCAT TAN, F XLN, OOL, F / G OOM + INTXN POR, NS

LS - CRM / WHT / SCAT TAN, VF / F XLN, OOL + FOSS IN PT, CHKY IN PT / DNS, NS

SH - GY / BLK W / LS - CRM / TAN / GY, MOT, SL FOSS, PRED DNS, NS

LS - TAN / CRM, F XLN, OOL, SL FOSS, P / F INTPART / INTXN POR, SCAT PPT POR, SSFO, VSS ASPH, NO ODOR, SPTY BLK / BRN STN, G FLUOR, P / G CUT

LS - WHT / CRM / SCAT TAN, VF / F XLN, SCAT M REXLN CALC, SL OOL + FOSS, PRED P INTXN + PPT POR IN PT, TR VUG POR, SUBCHKY IN PT, NS

LS - ASABOVE W / LS - TAN / CRM, VF / F XLN, SL FOSS, CHKY IN PT, PRED DNS, NS

LS - TAN / BRN, F / SCAT M XLN, TR OOL + FOSS, TR P INTXN POR, PRED DNS, TR FO, TR DEAD OIL, TR OILY FILM, PRED NS, NO ODOR, TR SPTY STN

LS - TAN / GY, VF / F XLN, ARGIL IN PT, PRED DNS, NS

LS - CRM / SCAT TAN, VF / F XLN, SCAT OOL, PRED P INTXN POR IN PT TO DNS, NS

LS - CRM / TAN / SCAT LT GY, VF / F XLN, SCAT M REXLN CALC, OOL, SL FOSS, SCAT P / F INTPART / INTXN POR, CHKY IN PT / DNS, NS

LS - CRM / TAN / LT GY, VF / F XLN, FOSS + OOL IN PT, SCAT P INTXN + FOSSMOLD POR, CHKY IN PT / DNS, NS

SH - BLK, CARB W / LS - BRN / TAN, F XLN, FOSS IN PT, PRED DNS, NS W / SCAT CHT - LT GY / WHT

DST #1: 3,998'-4,026' (LKC "B")
30" - 60" - 60" - 60"

IF: Surface blow bldg to 3.25 in
ISI: No blow back
FF: Surface blow bldg to 4 in
FSI: No blow back

RECOVERY: 150' Total Fluid:
30' MCW (65% W, 35% M)
120' SMCW (85% W, 15% M)
(show of free oil on top)
Sampler: 2000 ml W @ 180 psi
Chlorides recovery: 24,000 ppm

SIP: 1008-979 HP: 1920-1849
FP: 18-56, 58-91 BHT: 112'

TG, C1-C5

Vis: 56, Wt: 8.8
YP: 15, GelS: 9/32
pH: 11.5, WL: 5.6
Chl: 2000, Sol: 3.3
LCM: 2#

PIPE STRAP @ 4026': SHORT 1.04'

GAS UNIT TEST @ 4037: 87 UNITS

Vis: 57, Wt: 8.9,
LCM: 1#

ROP (min/ft)

CFS @ 4021'

CFS @ 4026'

4000

4050

4100

4150

0

10

100

1000

1

10

100

1000

1

10

100

1000

1

10

100

1000

1

10

100

1000

1

10

100

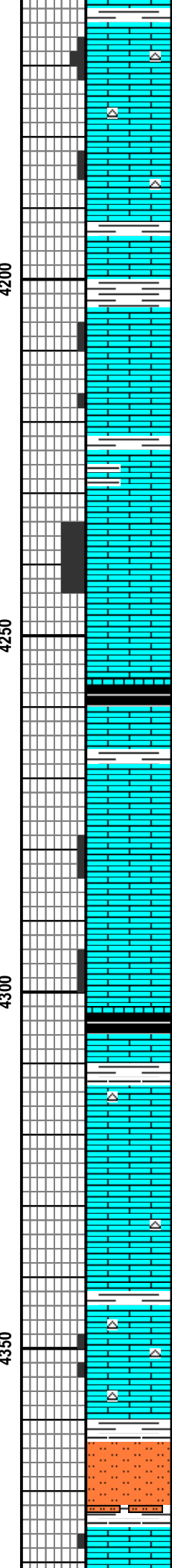
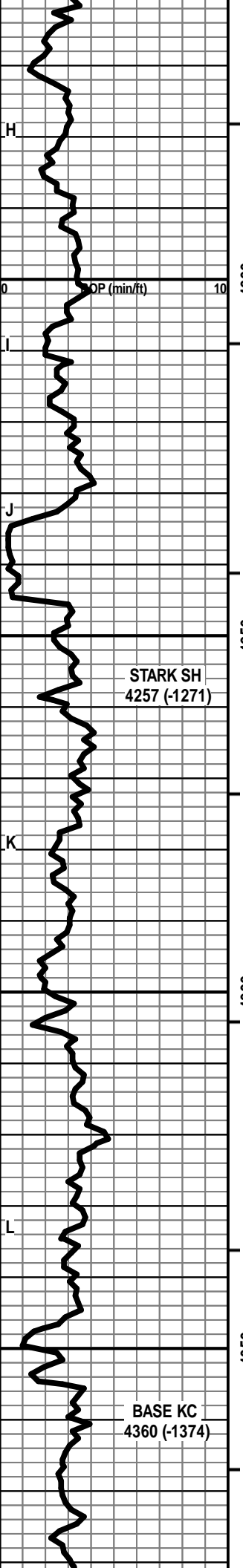
1000

1

10

100

1000



CRM / TAN, F / VF XLN, OOL, SL FOSS, P / F INTOOL + PPT POR IN PT, V CHKY IN PT / DNS, NS W/ CHT - LT GY / WHT

LS - CRM / LT GY, MOT IN PT, VF / F XLN, OOL IN PT, SL FOSS, TR P INTXLN POR, CHKY IN PT / DNS, NS W/ CHT - LT GY / WHT

LS - TAN / BRN, F XLN, SCAT FOSS, PRED DNS, NS W/ SH - GY

LS - TAN / GY / CRM, MOT IN PT, F / VF XLN, OOL, SCAT P / TR F INTXLN + PPT POR, SUBCHKY IN PT / DNS, NS

LS - TAN / BRN, VF / F XLN, OOL + FOSS IN PT, PRED DNS, NS W/ SCAT SH - GY / GRN W/ LS - TAN / CRM, F XLN, OOL, G OOM POR, F / G INTXLN POR, NS

LS - ASABOVE W/ LS - TAN / GY / BRN, VF / F XLN, SL FOSS + OOL, PRED DNS, NS W/ SCAT SH - BLK, CARB

LS - TAN / BRN, MOT IN PT, F / VF XLN, SL FOSS, SUBCHKY IN PT, PRED DNS, NS

LS - TAN / GY / CRM, F XLN, OOL IN PT, SCAT PRED P INTOOL POR, CHKY IN PT / DNS, NS

LS - V SIM TO ABOVE, P / TR F INTOOL / INTPART POR, NS W/ SH - BLK, CARB

LS - TAN / GY / SCAT CRM, VF / F / SCAT M XLN, OOL IN PT, AL FOSS, SUBCHKY IN PT, PRED DNS, NS W/ TR CHT - WHT / LT GY

LS - CRM / TAN, VF / F XLN, SCAT OOL, SUBCHKY / CHKY IN PT, PRED DNS, NS W/ SCAT CHT - LT GY / WHT

LS - TAN / CRM, F / VF XLN, OOL IN PT, SCAT P INTXLN POR, SUBCHKY IN PT, PRED DNS, NS W/ ABNT CHT - GY / WHT / TAN

PRED SLTST - GY / GRN

LS - TAN / GY / BRN, F / SCAT M XLN, FOSS + OOL IN PT, SCAT P INTXLN POR, PRED DNS, TR SPTY DEAD STN,

Vis: 57, Wt: 9.0
 YP: 16, GelS: 8/30
 pH: 11.0, WL: 7.2
 Chl: 3000, Sol: 4.6
 LCM: 2#

TG, C1-C5

WORK ON GAS UNIT

Vis: 48, Wt: 9.0,
 LCM: 1#

MARMATON
4386 (-1400)

CFS @ 4390'

ROP (min/ft) 0 10

CFS @ 4412'

CFS @ 4430'

PAWNEE
4474 (-1488)

CHEROKEE
4523 (-1537)

JOHNSON ZN
4586 (-1600)

NSFO, NO ODOR W/ SCAT LS - CRM / TAN, VF / F XLN,
SL FOSS, PRED DNS, NS

LS - CRM / WHT / TAN, F / VF XLN, OOL, SL FOSS, CHKY
IN PT, TR GLAUC, PRED DNS, NS

LS - CRM / TAN, F / VF XLN, OOL, SL FOSS, TR P PPT
POR, SUBCHKY IN PT, PRED DNS, NS

LS - CRM / TAN / SCAT GY, F / VF XLN, SL OOL + FOSS,
AREN IN PT, PRED DNS, NS

LS - CRM / TAN / GY, F / VF XLN, OOL IN PT, SL FOSS,
SUBCHKY IN PT, PRED DNS, NS

LS - CRM / TAN / SCAT BRN, F / VF / SCAT CRYPTO
XLN, SL FOSS, TR OOL, PRED DNS, TR DEAD STN ?,
NSFO, NO ODOR W/ CHT - GY / CRM / TAN

LS - TAN / BRN / CRM, VF / F XLN, SL FOSS, SUBCHKY
IN PT, PRED DNS, NS W/ CHT - AA

SH - BLK, CARB W/ SH - GY / GRN W/ LS - CRM / TAN,
MOT, VF / F XLN, PRED DNS, NS

LS - CRM / TAN, VF / F XLN, SL FOSS, CHKY IN PT, PRED
DNS, NS W/ CHT - GY

LS - CRM / TAN / BRN, MOT IN PT, VF / F XLN, OOL +
FOSS IN PT, SUBCHKY IN PT, PRED DNS, NS W/ SH - GY
+ BLK, CARB

LS - TAN / BRN / CRM, VF / F XLN, OOL IN PT, SL FOSS,
SUBCHKY IN PT, PRED DNS, NS W/ SCAT CHT - GY /
BRN

LS - TAN / CRM / SCAT BRN, VF / F XLN, SL FOSS +
OOL, PRED DNS, NS W/ SCAT CHT - GY

LS - TAN / BRN / SCAT CRM, VF / F XLN, SCAT OOL +
FOSS, SUBCHKY / CHKY IN PT, PRED DNS, NS

LS - CRM / TAN / BRN, VF / F XLN, SCAT REXLN CALC,
SL FOSS, OOL IN PT, PRED DNS, NS W/ SCAT CHT - GY
W/ SH - GY / BLK

LS - TAN / BRN / SCAT CRM, VF / F XLN, SL FOSS, OOL
IN PT, PRED DNS, NS W/ SCAT CHT - GY / TAN

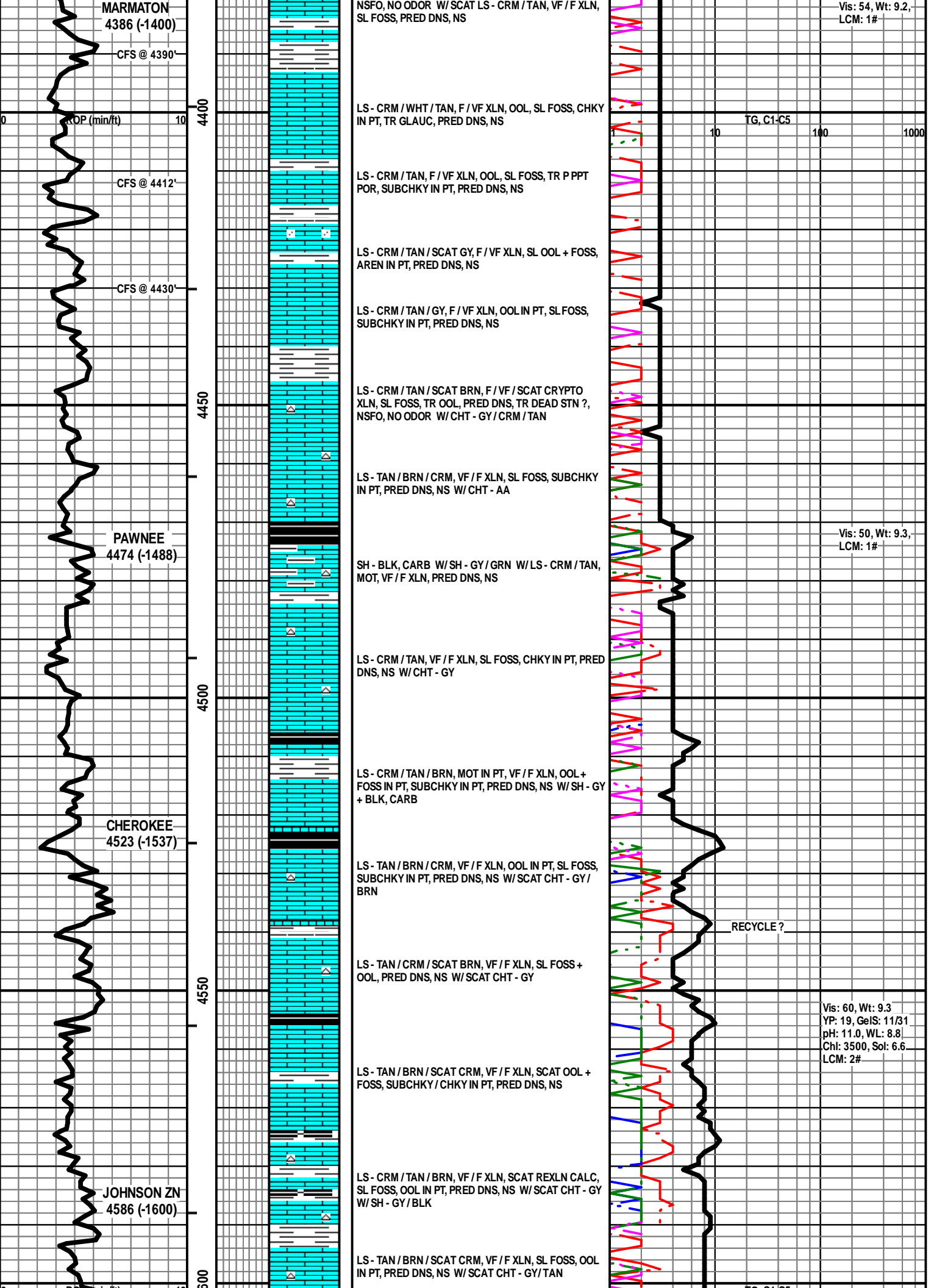
Vis: 54, Wt: 9.2,
LCM: 1#

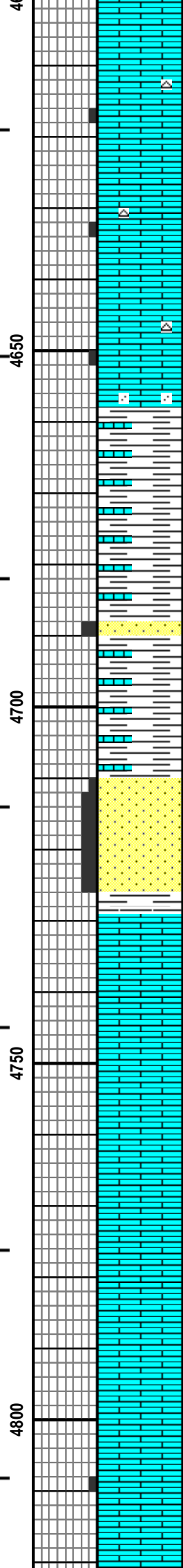
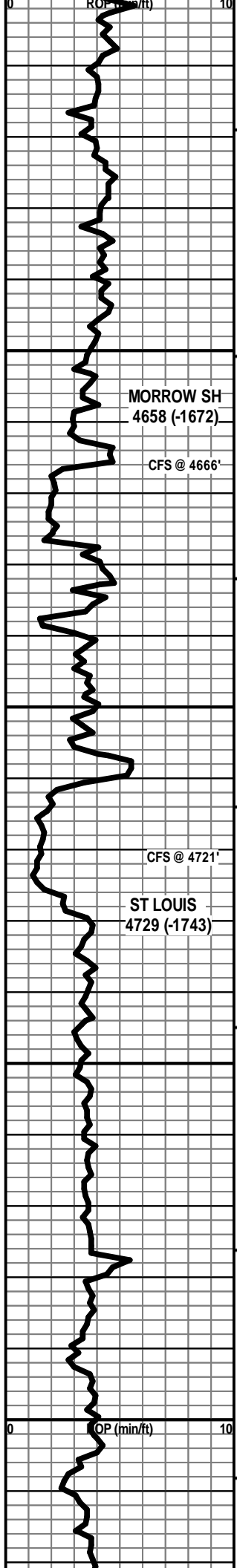
TG, C1-C5

Vis: 50, Wt: 9.3,
LCM: 1#

RECYCLE ?

Vis: 60, Wt: 9.3
YP: 19, GeIS: 11/31
pH: 11.0, WL: 8.8
Chl: 3500, Sol: 6.6
LCM: 2#





LS - TAN / CRM / SCAT BRN, VF / F XLN, SL FOSS, SCAT OOL, PRED DNS, NS W/ SCAT CHT - AS ABOVE

LS - CRM / TAN, VF / F XLN, SL FOSS, FEW PCES P INTXLN POR, VSSFO + GB (BLEEDING IN PT), V FT ODOR, TR SPTY STN

LS - CRM / TAN / SCAT GY, MOT IN PT, VF / F XLN, OOL IN PT, OOL IN PT, SL FOSS, SCAT P INTXLN POR, TR PPT POR, SSFO, FT ODOR, SCAT SPTY STN, F / G FLUOR + CUT

LS - CRM / TAN / GY, VF / F XLN, OOL IN PT, SL FOSS, SCAT P INTXLN POR, SSFO, V FT ODOR, SCAT SPTY STN, F / G FLUOR + CUT

LS - V SIM TO ABOVE, PRED DNS, AREN IN PT, NS W/ SCAT SH - GY / GRN / BLK

ABNT LS - AS ABOVE (CAVING?) W/ SCAT SH - GY / GRN / BLK W/ TR SS - GY, VF / F GR, W SRTD, SA / SR, V CALC, LS FRAG. DNS, NS

ABNT SH - GY / GRN / BLK, SLTY IN PT W/ ABNT LS - AA + SCAT TAN / GY, M / C XLN, FOSS, GLAUC, DNS, NS (CAVINGS?) W/ TR SS - GY, VF / F GR, W SRTD, SA / SR, SIL CEM, TR CHL, F INTGR POR, NS

MOD AMT SH - GY / GRN / SCAT BLK W/ ABNT LS - TAN / BRN / SCAT CRM, VF / F / SCAT M XLN, SL FOSS, DNS, NS (CAVINGS?) W/ SCAT GLAUC LS - AS ABOVE (CAVINGS?) W/ SCAT CHT

SS - LT GY, VF / F GR, W SRTD, SA / SR, CALC CEM, SCAT GLAUC, F INTGR POR, NS W/ ABNT LS + SH CAVINGS - AS ABOVE W/ SCAT CHT CAVINGS

LS - CRM / TAN, F / VF XLN, OOL IN PT, PRED DNS, NS W/ ABNT LS + SH + CHT CAVINGS AS ABOVE

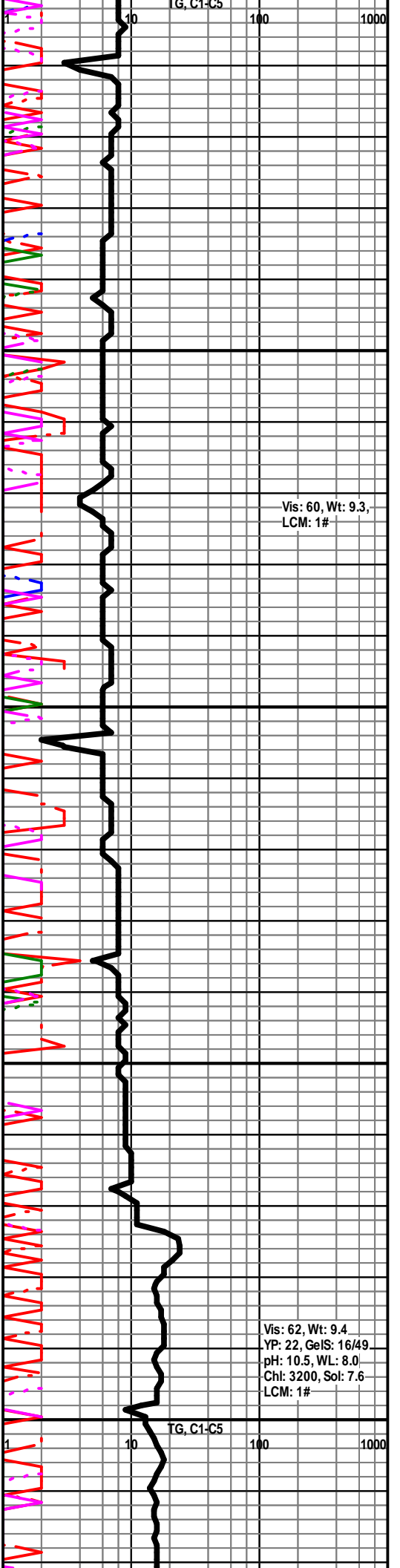
LS - CRM / TAN, F / VF XLN, OOL IN PT, SCAT AREN, SUBCHKY IN PT, PRED DNS, NS

LS - CRM / TAN, F / VF XLN, OOL IN PT, SCAT AREN, SUBCHKY IN PT, PRED DNS, NS

LS - CRM / TAN, F / VF XLN, SCAT OOL, CHKY IN PT, PRED DNS, NS W/ SCAT BLK SH

LS - CRM / TAN, F / VF / SCAT CRYPTO XLN, OOL IN PT, CHKY IN PT, PRED DNS, NS

LS - CRM / TAN, F / VF / SCAT CRYPTO XLN, OOL IN PT, SCAT P INTOOL POR, CHKY IN PT, PRED DNS, NS



LS - TAN / CRM, F / VF / SCAT CRYPTO XLN, SCAT OOL,
CHKY IN PT, PRED DNS, NS

TOTAL DEPTH 4830 (-1844)

4850

