

ADVANTAGE ELEVATIONS

OIL FIELD SURVEYORS

BOX 8604 - PRATT, KS 67124
(620) 672-6491

57151

INVOICE NO.

VINCENT OIL CORPORATION
OPERATOR

4-34
NO.

KEOUGH
FARM

FORD
COUNTY

34 28s 23w
S T R

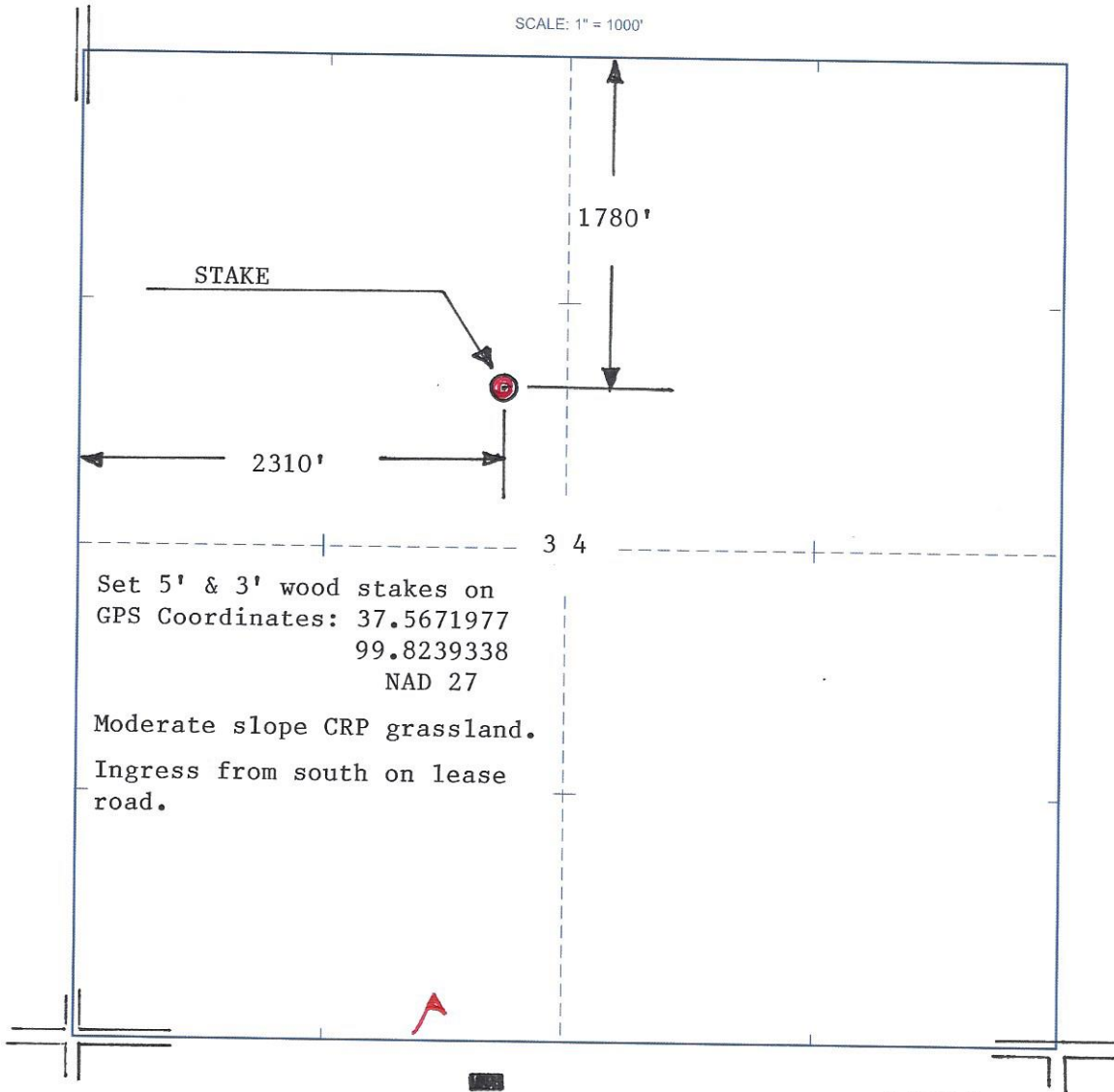
1780' FNL & 2310' FWL of Sec.
LOCATION

ELEVATION: 2522' GR



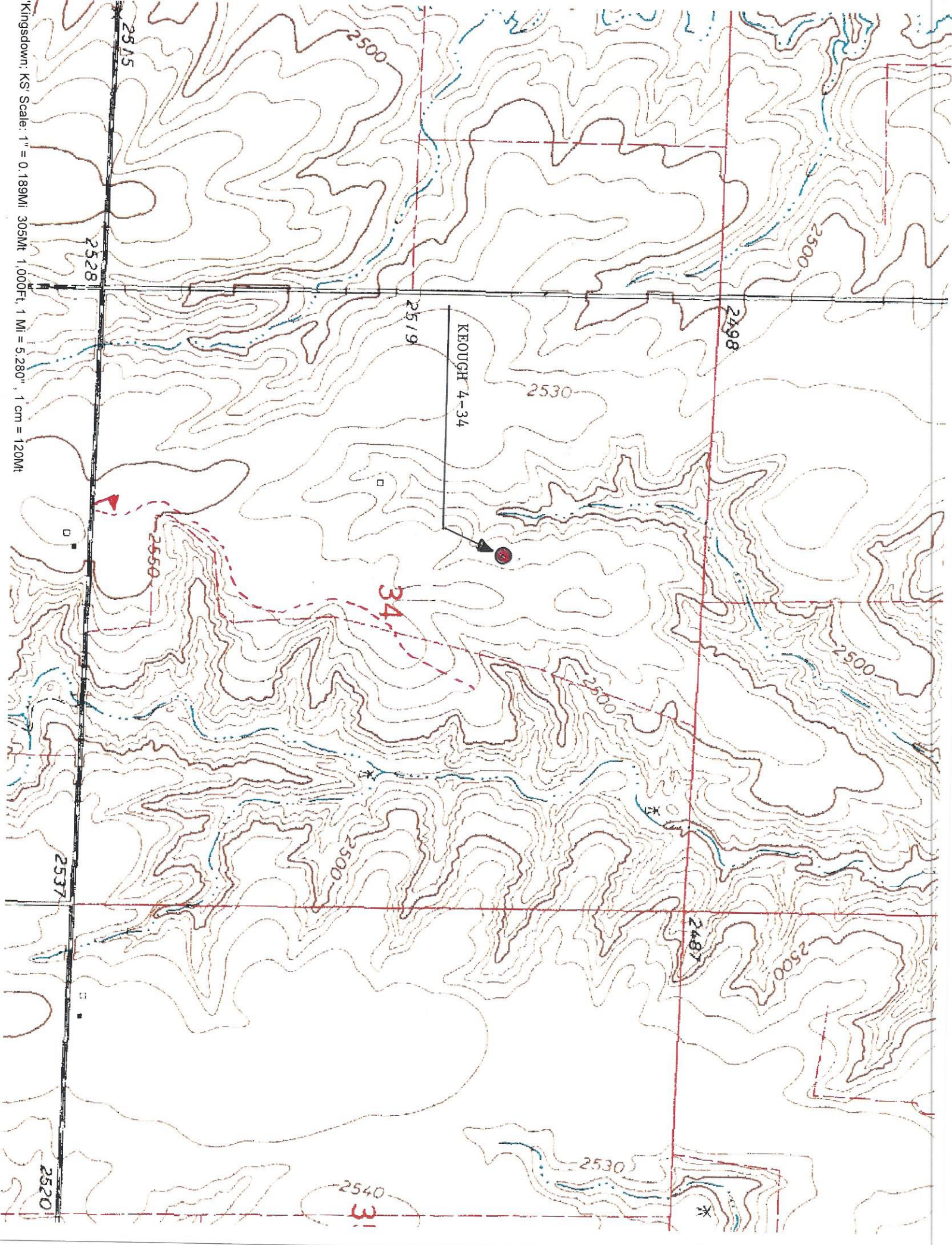
VINCENT OIL CORP.
155 N Market St.
Ste 700
Wichita, KS 67202

AUTHORIZED BY: M.L. Korphage



DATE STAKED: 5/7/15

Kingsdown, KS' Scale: 1" = 0.189MI, 305Mt, 1,000Ft, 1 Mi = 5,280', 1 cm = 120Mt



KEOUGH 4-34

34