



SANDLIN OIL CORPORATION

Scale 1:240 Imperial

Well Name: CHESNEY #1
 Surface Location: SE NE SW NW S24 T8S R17W
 Bottom Location:
 API: 15-163-24290-00-00
 License Number: 6677
 Spud Date: 4/21/2015 Time: 5:02 PM
 Region: ROOKS COUNTY
 Drilling Completed: 4/26/2015 Time: 5:58 PM
 Surface Coordinates: 1860 FNL & 1025 FWL
 Bottom Hole Coordinates:
 Ground Elevation: 1942.00ft
 K.B. Elevation: 1948.00ft
 Logged Interval: 2700.00ft To: 3500.00ft
 Total Depth: 3500.00ft
 Formation: LANSING KANSAS CITY
 Drilling Fluid Type: CHEMICAL/FRESH WATER GEL

OPERATOR

Company: SANDLIN OIL CORPORATION
 Address: 621 17TH ST STE 2055
 DENVER, CO 80293-2001
 Contact Geologist: GARY SANDLIN
 Contact Phone Nbr: 303-292-3313
 Well Name: CHESNEY #1
 Location: SE NE SW NW S24 T8S R17W
 API: 15-163-24290-00-00
 Pool:
 State: KANSAS Field: WILDCAT
 Country: USA

SURFACE CO-ORDINATES

Well Type: Vertical
 Longitude: -99.1719186
 Latitude: 39.3454281
 N/S Co-ord: 1860 FNL
 E/W Co-ord: 1025 FWL

LOGGED BY



Company: SOLUTIONS CONSULTING, INC.
 Address: 108 WEST 35TH
 HAYS, KANSAS 67601
 Phone Nbr: 785-650-4540 / 785-639-1337
 Logged By: GEOLOGIST Name: STEVE REED

CONTRACTOR

Contractor: ROYAL DRILLING
 Rig #: 1
 Rig Type: MUD ROTARY
 Spud Date: 4/21/2015 Time: 5:02 PM
 TD Date: 4/26/2015 Time: 5:58 PM
 Rig Release: 4/28/2015 Time: 12:00 AM

ELEVATIONS

K.B. Elevation: 1948.00ft Ground Elevation: 1942.00ft
 K.B. to Ground: 6.00ft

NOTES

BASED ON FAVORABLE STRUCTURE, POSITIVE LOG ANALYSIS WITH NUMEROUS THIN ZONES THAT CALCULATE, AND OIL RECOVERY WITH GOOD PRESSURES FROM DST #1. THE DECISION WAS MADE TO SET 4 1/2" PRODUCTION CASING TO FURTHER TEST THE POTENTIAL OF THE CHESNEY #1.

OPEN HOLE LOGGING BY NABORS COMPLETION & PRODUCTION: DUAL INDUCTION LOG, COMPENSATED DENSITY/NEUTRON POROSITY LOG, MICRO LOG

DRILL STEM TESTING BY EAGLES TESTERS: ONE CONVENTIONAL TEST AND ONE STRADDLE TEST

RESPECTFULLY SUBMITTED BY:

STEVE REED

	WELL NAME		COMPARISON WELL	COMPARISON WELL
	CHESNEY #1		HARRISON #1	CHESNEY #1
	API: 15-163-24290		API: 15-163-20859	API: 15-163-22707
	SE NE SW NW S24 T8S R17W		SW NE SE S23 T8S R17W	SE SW NE S23 T8S R17W
FORMATION	SAMPLE TOPS	LOG TOPS	LOG TOPS (DATUM)	LOG TOPS (DATUM)
ANHYDRITE	1232' (+716)	1228' (+720')	+718'	+717'
TOPEKA	2927' (-879')	2824' (-876')	-880'	-881'
HEEBNER	3041' (-1093')	3040' (-1092')	-1095'	-1094'
TORONTO	3066' (-1118')	3059' (-1111')	-1116'	-1122'
LKC	3088' (-1140')	3080' (-1132')	-1139'	-1140'
CONGLOMERATE	3401' (-1453')	3400' (-1452')	NA	-1455'
BKC	3327' (-1379')	3322' (-1374')	-1382'	-1382'
ARBUCKLE	NO CALL	3454' (-1506')	NA	NA
RTD	3500' (-1552')	3496' (-1548')	-1442'	-1507'

SUMMARY OF DAILY ACTIVITY

- 4-21-15** R.U., spud @ 1:00PM
- 4-22-15** 215', 8 5/8" surface casing set at 215' w/150 sxs common, 2% gel, 3% cc, plug down 4:45am WOC, drill plug 12:45pm
- 4-23-15** 1440', drilling
- 4-24-15** 2450', drilling
- 4-25-15** 3134', drilling, CFS @ 3160, CFS @ 3200, CFS @ 3255, CFS @ 3275, Short Trip (22 stands), CTCH, TOWB, strap 1.34 long to board , survey 1/2°, DST #1 3226 to 3275
- 4-26-15** 3290', drilling, CFS@ 3422, TD reached @ 5:58pm, CFS @ 3500 TOWB for logs, logging, DST #2 3266 to 3500
- 4-27-14** 3500', TOWT, prepare to set 4 ½" production casing
- 4-28-14** release rig



DRILL STEM TEST REPORT

Sandin Oil Corporation
 621 17th Street Suite 2005
 Denver, Colorado 80293-2001
 ATTN: Steve Reed

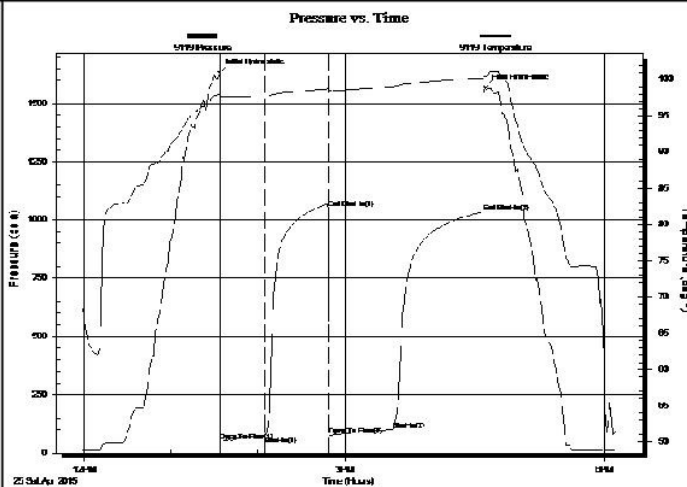
24-8s-17w Rooks
Cheney #1
 Job Ticket: 01028 **DST#: 1**
 Test Start: 2015.04.26 @ 00:00:00

GENERAL INFORMATION:

Formation: **Kansaa City**
 Deviated: No Whipstock: ft (KB)
 Time Tool Opened: 00:00:00
 Time Test Ended: 00:00:00
 Test Type: Conventional Bottom Hole (Initial)
 Tester: Gene Budig
 Unit No: #1
 Interval: **3226.00 ft (KB) To 3275.00 ft (KB) (TVD)**
 Reference Elevations: 1948.00 ft (KB)
 Total Depth: 3275.00 ft (KB) (TVD) 1942.00 ft (CF)
 Hole Diameter: 7.88 inches Hole Condition: Fair KB to GR/CF: 6.00 ft

Serial #: 9119 Outside
 Press@RunDepth: 1034.17 psia @ 3270.37 ft (KB) Capacity: 5000.00 psia
 Start Date: 2015.04.25 End Date: 2015.04.25 Last Calib.: 2015.04.26
 Start Time: 11:58:00 End Time: 18:07:30 Time On Btm: 2015.04.25 @ 13:33:30
 Time Off Btm: 2015.04.25 @ 16:37:00

TEST COMMENT: 1st Opening 30 Minutes-Weak building blow built to 9 inches into the water
 1st Shut-In 45 Minutes- No blow back
 2nd Opening 45 Minutes-Weak building blow built to 11 inches into the water
 2nd Shut-In 60 Minutes- No blow back



PRESSURE SUMMARY

Time (Min.)	Pressure (psia)	Temp (deg F)	Annotation
0	1634.12	97.95	Initial Hydro-static
1	50.08	97.20	Open To Flow (1)
32	73.35	97.73	Shut-In(1)
75	1049.24	98.69	End Shut-In(1)
76	77.55	98.44	Open To Flow (2)
120	100.56	99.05	Shut-In(2)
182	1034.17	100.25	End Shut-In(2)
184	1569.66	100.49	Final Hydro-static

Recovery

Length (ft)	Description	Volume (bbl)
60.00	Thick heavy oil cut muddy w ater	0.84
0.00	50%Mud 30%Water 20%Oil	0.00
40.00	Thick heavy oil cut mud 80% Mud 20% Oil	0.56
20.00	Clear oil	0.28

Gas Rates

	Choke (inches)	Pressure (psia)	Gas Rate (Mcf/d)

20.00	Clean oil	0.26
0.00	Chlorides 14,000	0.00

Eagle Testers

Ref. No: 01028

Printed: 2015.04.26 @ 05:02:34

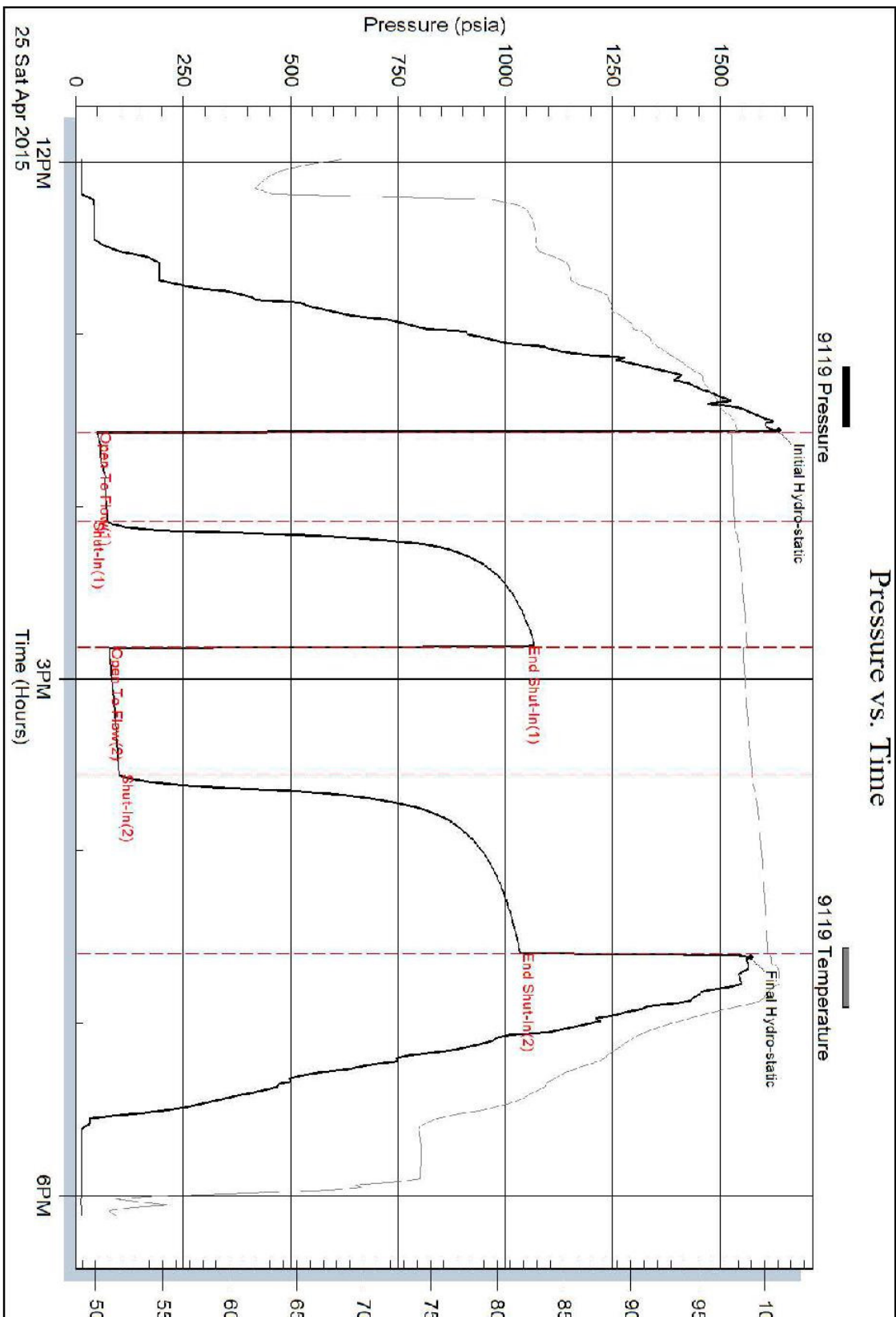
Serial #: 9119

Outside Sandin Oil Corporation

Cheney #1

DST Test Number: 1

Pressure vs. Time



Eagle Testers

Ref. No: 01028

Printed: 2015.04.26 @ 05:02:35



DRILL STEM TEST REPORT

Sandin Oil Corporation
 621 17th Street Suite 2005
 Denver, Colorado 80293-2001
 ATTN: Steve Reed

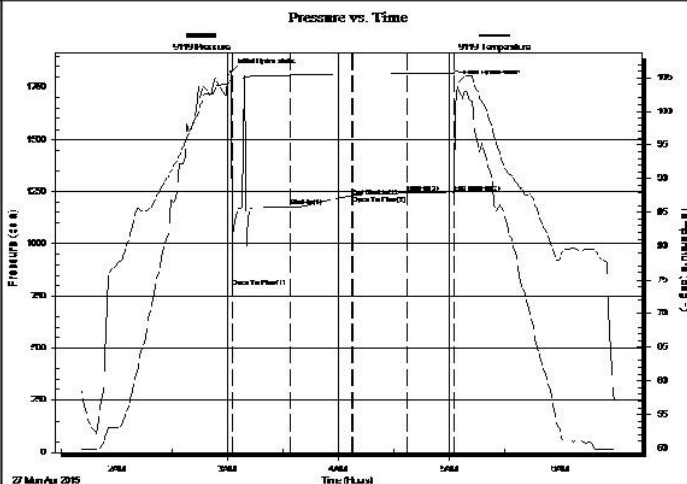
24-8s-17w Rooks
Cheney #1
 Job Ticket: 01029 **DST#: 2**
 Test Start: 2015.04.27 @ 00:00:00

GENERAL INFORMATION:

Formation: **Kansas City "J" -Arb**
 Deviated: No Whipstock: ft (KB)
 Time Tool Opened: 00:00:00
 Time Test Ended: 00:00:00
 Test Type: Conventional Bottom Hole (Initial)
 Tester: Gene Bujdig
 Unit No: 1
 Interval: **3266.00 ft (KB) To 3296.00 ft (KB) (TVD)**
 Total Depth: 3296.00 ft (KB) (TVD)
 Hole Diameter: 7.88 inches Hole Condition: Fair
 Reference Elevations: 1948.00 ft (KB)
 1942.00 ft (CF)
 KB to GR/CF: 6.00 ft

Serial #: 9119 Inside
 Press@RunDepth: 1247.90 psia @ 3571.98 ft (KB) Capacity: 5000.00 psia
 Start Date: 2015.04.27 End Date: 2015.04.27 Last Calib.: 2015.04.27
 Start Time: 01:40:00 End Time: 06:29:30 Time On Btm: 2015.04.27 @ 03:02:00
 Time Off Btm: 2015.04.27 @ 05:04:00

TEST COMMENT: 1st Opening 30 Minutes-Weak blow fofr 19 Minutes and died
 1st Shuty-In 30 Minutes-No blow back
 2nd Opening 30 Minutes-No blow
 2nd Shut-In 30 Minutes- No blow back



PRESSURE SUMMARY

Time (Min.)	Pressure (psia)	Temp (deg F)	Annotation
0	1825.21	104.64	Initial Hydro-static
1	796.29	104.55	Open To Flow (1)
32	1177.14	105.33	Shut-In(1)
65	1229.09	105.51	End Shut-In(1)
66	1230.09	105.52	Open To Flow (2)
95	1245.42	105.65	Shut-In(2)
121	1247.90	105.75	End Shut-In(2)
122	1770.65	105.98	Final Hydro-static

Recovery

Length (ft)	Description	Volume (bbl)
40.00	Drilling	0.56

Gas Rates

Chole (inches)	Pressure (psia)	Gas Rate (Mcf/d)

Serial #: 9119

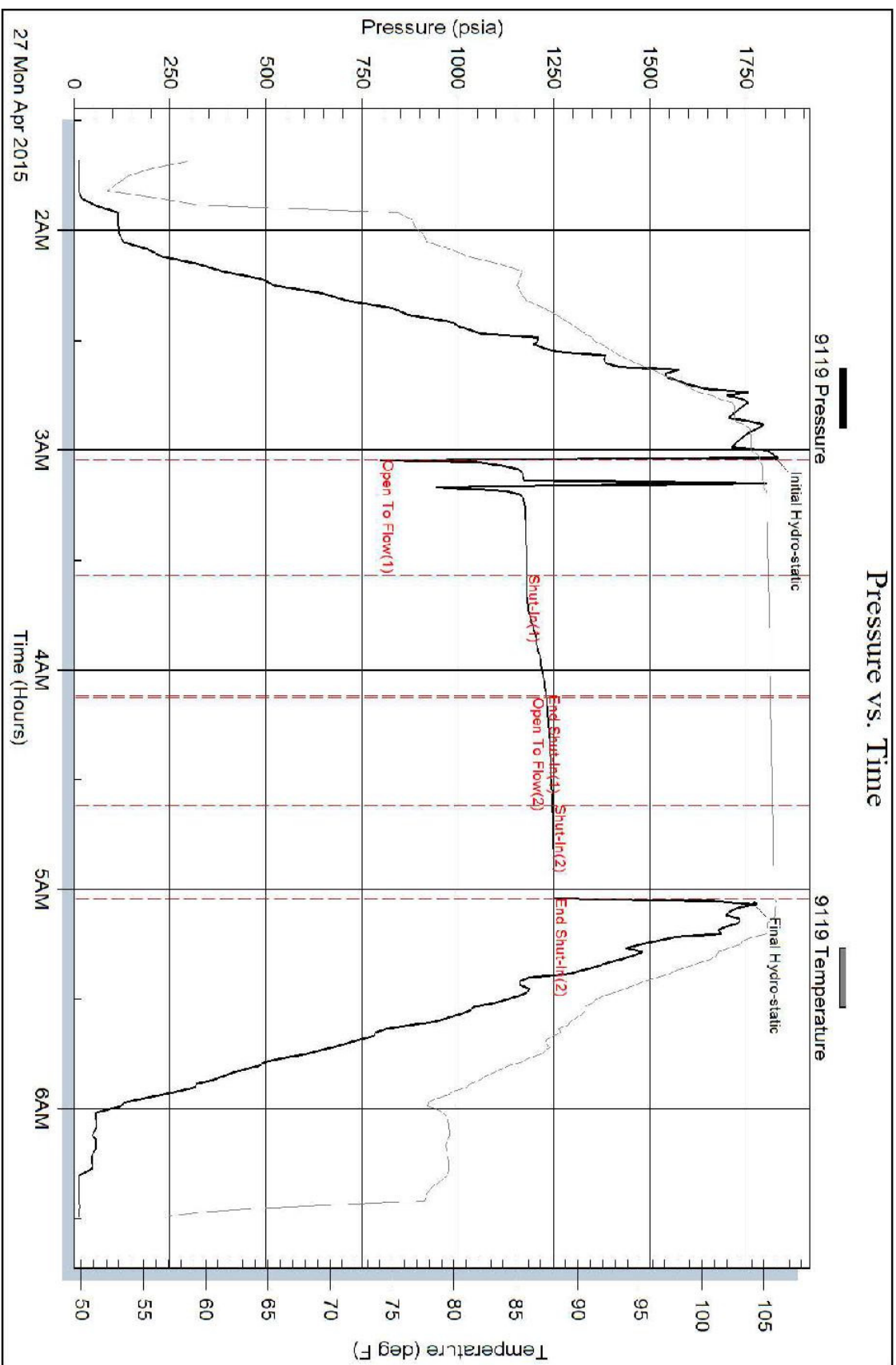
Inside

Sandin Oil Corporation

Cheney #1

DST Test Number: 2

Pressure vs. Time

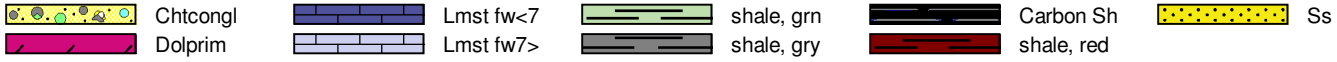


Eagle Testers

Ref. No: 01029

Printed: 2015.04.27 @ 07:20:18

ROCK TYPES



ACCESSORIES

MINERAL

- ▲ Chert, dark
- P Pyrite
- △ Chert White
- Mc Mica
- ∕ Euhed rhombs of dol or

FOSSIL

- F Fossils < 20%
- φ Oolite
- ⊗ Fossilinid

STRINGER

- ~~~~ Chert
- ▨ Dolomite

TEXTURE

- C Chalky

OTHER SYMBOLS

EVENTS

- ⌋ Casing Shoe
- ▽ RTF
- ▶ Sidewall
- ▲ Left Casing Shoe
- ▼ Right Casing Shoe

INTERVALS

- Core
- DST

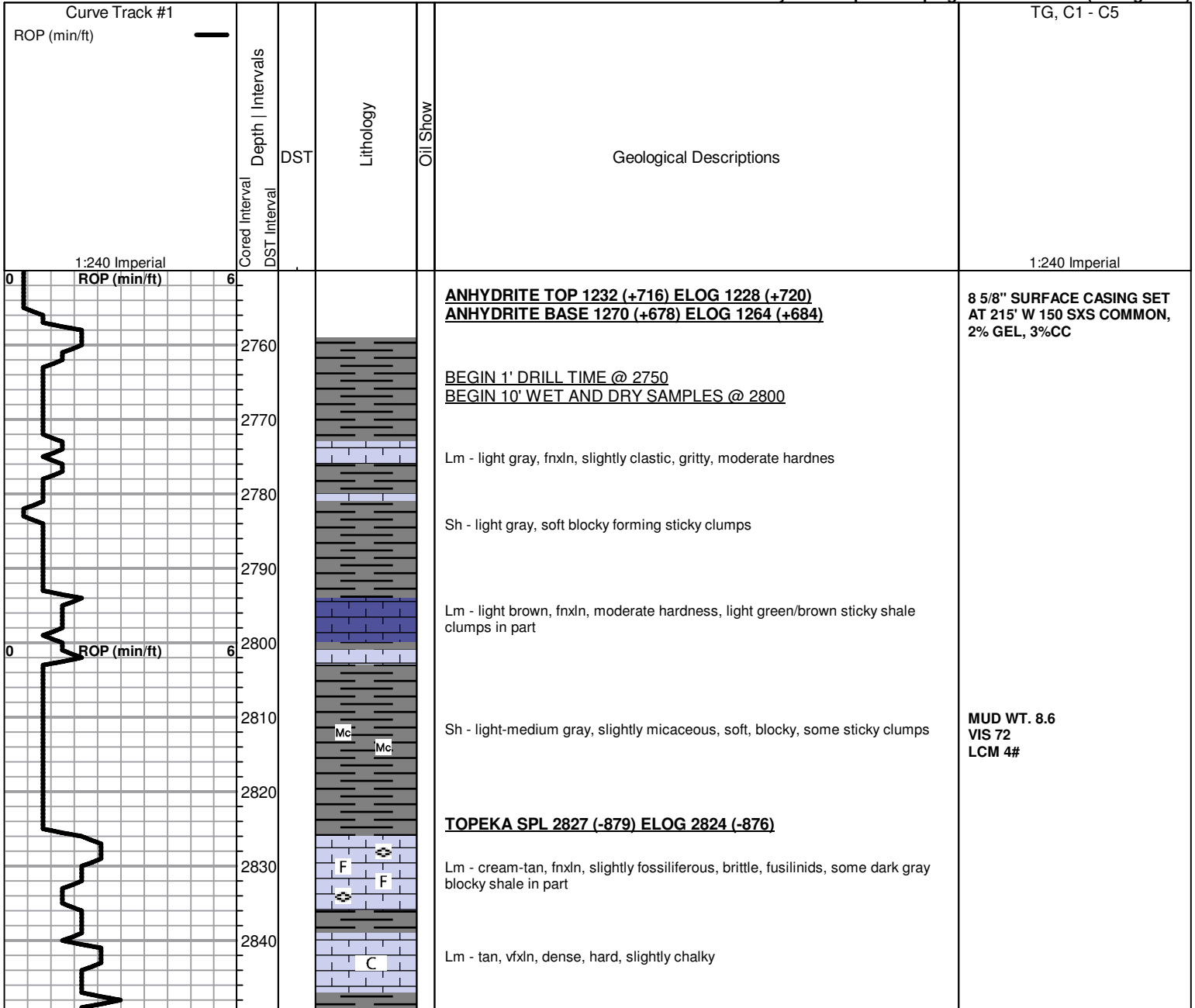
Oil Show

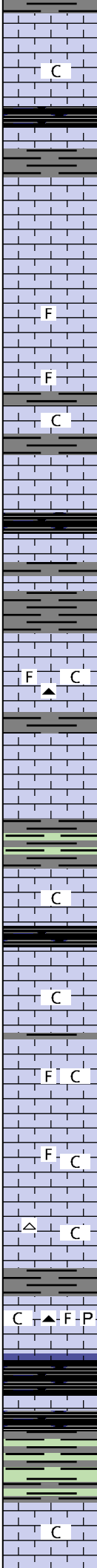
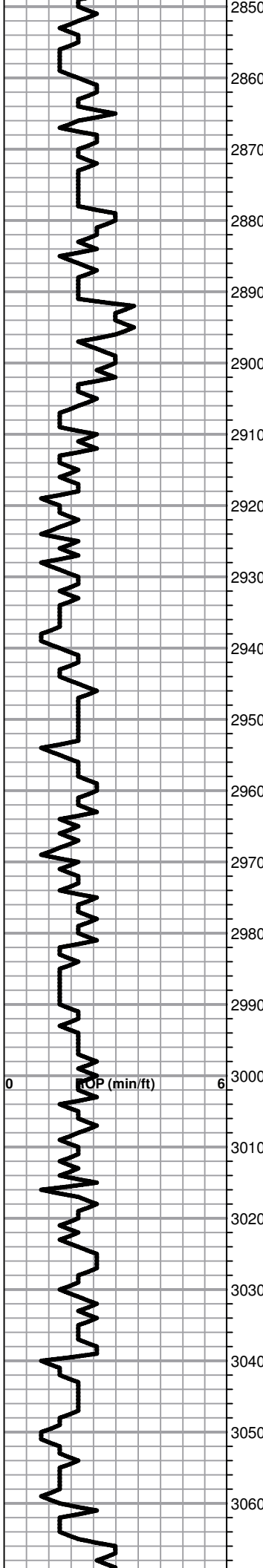
- Good Show
- Fair Show
- Poor Show
- Spotted or Trace
- Questionable Stn
- D Dead Oil Stn
- Fluorescence
- * Gas

DST

- DST Int
- DST alt
- Core
- tail pipe
- DST
- DST
- DST

Printed by GEOstrip VC Striplog version 4.0.8.15 (www.grsi.ca)





Lm - tan-light brown, vfxln, hard, sharp

Lm - cream-tan, fnxln, moderate hardness, slightly chalky, slightly fossiliferous

Sh - black carbonaceous, fissile

Lm - tan-light gray, mottled, vfxln, dense, brittle, sharp

Lm - tan, fnxln moderate hardness, clean, sharp

Lm - tan, fnxln, moderate hardness, brittle, slightly fossiliferous

Lm - light gray-light brown, vf-fnxln, hard on crush, dark fossil clasts in part

Lm - tan-light gray, fnxln, brittle, chalky

Lm - cream-tan, fn-medxln, bedded chalk in part

Sh - black carbonaceous, soft, waxy, fissile, bronze specks

Sh - light gray, soft blocky, forming sticky clumps

Lm - cream-tan, fnxln, moderate hardness, slightly chalky, slightly fossiliferous, medium gray fossiliferous chert

Lm - buff, fnxln, hard, sharp, pyrite clusters

Sh - light greenish gray, soft, blocky

Lm - cream, fnxln, hard, brittle, bedded chalk

Sh - black, carbonaceous, soft, waxy

Lm - cream-buff, fnxln, slight bedded chalk, 1 chip with slight staining, NSFO, no odor

Lm - cream-tan, fnxln, dark fossil clasts in some, bedded chalk in part, light brown fossiliferous chert

Lm - cream-light brown, fnxln, slightly fossiliferous, brittle, bedded chalk

Lm - cream-tan, fnxln, brittle, bedded chalk, gray chert

Lm - tan-light brown, fnxln, slightly fossiliferous, bedded chalk, black chert, pyrite

HEEBNER SPL 3041 (-1093) ELOG 3040 (-1092)

Sh - black, carbonaceous, waxy

Lm - tan, fnxln, slightly clastic, hard

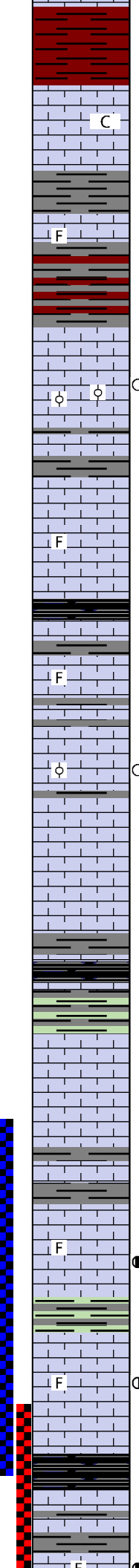
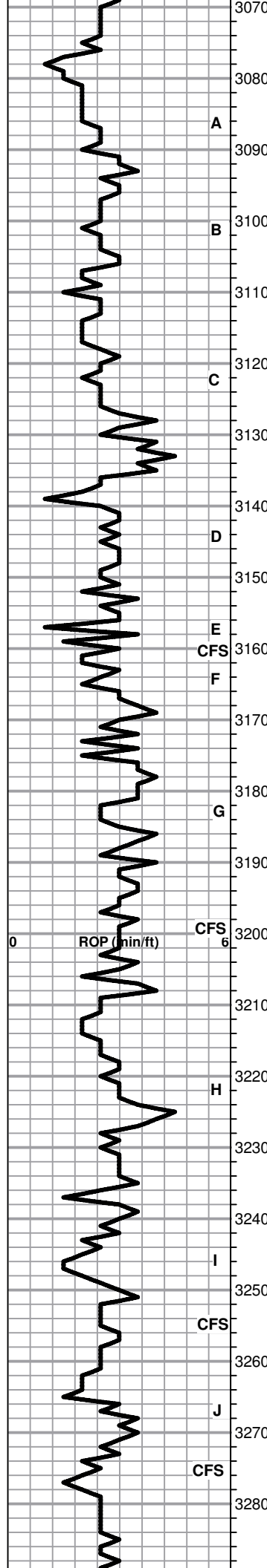
Sh - light greenish gray, soft blocky, forming sticky clumps

TORONTO SPL 3066 (-1118) ELOG 3059 (-1111)

Lm - offwhite, fn-medxln, some with fine pinpoint porosity, no shows, white sticky chalk in part

MUD WT 8.6
VIS 61
LCM 3#

MUD WT 8.7
VIS 58
LCM 2#



Sh - maroon, soft very sticky, forming red wash

LKC SPL 3088 (-1140) ELOG 3080 (-1132)

A

C

Lm - cream-tan, fnxn, dense, brittle, slightly chalky, no shows

B

F

Lm - cream, fnxn, slightly fossiliferous, dense, brittle, cherty

C

O

Lm - cream, oolitic, fine interxn porosity, scattered golden brown stain, slight odor, few specks of free oil, overall very tight

D

F

Lm - cream-light brown, fossiliferous, fine interxn porosity, dense, hard, slight bedded chalk in part, no shows

E

CFS

Sh - black, carbonaceous, waxy, soft
Lm - light gray, vfxn, very hard

F

F

Lm - tan, granular, well cemented, fossiliferous, hard, no shows

G

O

Lm - cream, slightly oolitic, fine interxn porosity with vugs, scattered stain, slight odor, NSFO

H

CFS

Lm - cream, fnxn, dense, very hard, no shows

Lm - cream, clean, fnxn, hard, brittle, no shows

I

CFS

Sh - black, carbonaceous, waxy

Sh - medium gray-green, soft, blocky

Lm - cream, fossiliferous, fnxn, dense, hard, pyrite

J

CFS

Lm - cream-tan, slightly chalky, brittle on crush, no shows

Lm - cream, fnxn, hard, brittle

F

Lm - cream-tan, fossiliferous, fine pinpoint porosity, saturated golden brown stain, SFO upon crush, floating on water, good odor, light gassy sheen, good streaming wet cut under UV light

Sh - greenish gray, soft, sticky

K

CFS

F

Lm - tan, fossiliferous, fine pinpoint porosity, saturated stain in some, slight odor, good streaming wet cut, slight show of free oil

Sh - black, carbonaceous, soft, waxy

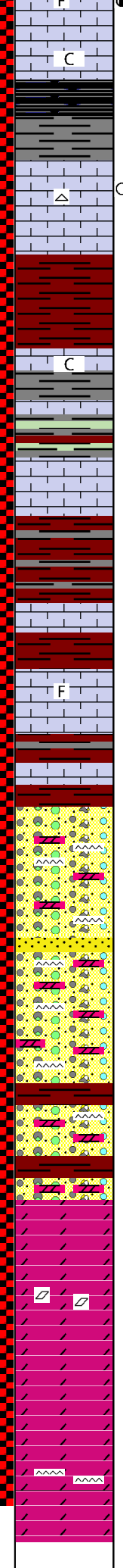
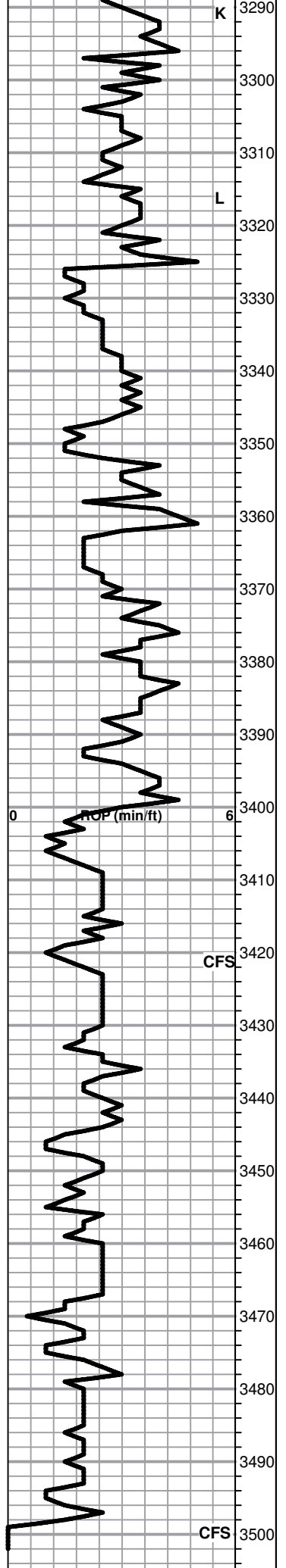
MUD WT 8.7
VIS 57

MUD WT 8.9
VIS 54
LCM 2#

DST #1 3226 TO 3275
SEE HEADER FOR RESULTS

MUD WT 9.0
VIS 53
LCM 3#

DST #2 3266 TO 3496
MISRUN
SEE HEADER FOR SUMMARY



Lm - cream, fossiliferous, fine interxn porosity, saturated stain, slight odor, NSFO, good streaming wet cut, tight.

Lm - cream-light gray, fnxn, dense, hard, slight bedded chalk
Sh - black, carbonaceous, fissile

Lm - cream-offwhite, fine pinpoint porosity, 2 chips with slight scattered stain, NSFO, no odor, cherty

BKC SPL 3327 (-1379) ELOG 3322 (-1374)

Sh - maroon, soft, blocky

Lm - offwhite, granular, sucrosic, some friable, others very hard, chalky

Sh - greenish gray-maroon, soft, blocky

Lm - offwhite, medxn, brittle, pyrite

Sh - maroon-medium gray, soft, blocky, some forming sticky clumps

Lm - bright white, medxn, chalky in part, brittle

Lm - cream-bright white, fossiliferous, brittle, hard

Sh - maroon-light gray, soft, blocky

CONGLOMERATE SPL 3401 (-1453) ELOG 3400 (-1452)

Cong - mixture of various Lm's, Dolomites, colored cherts, and shales

Cong - A/A

Ss - very fine grained, well sorted, well rounded, sucrosic, friable, clean and barren

Cong - A/A

Sh - maroon, soft, sticky, increasing red wash

Cong - A/A

ARBUCKLE ELOG 3454 (-1452)

Dolo - cream-tan, medxn, hard, clean and barren

Dolo - tan, fn-medxn, well developed rhombic xtals, clean and barren

Dolo - cream, fn-medxn, hard, no shows, no odor

Dolo - cream-salmon pink, fn-medxn, clean and barren

Dolo - tan, fnxn, no shows, cherty

RTD 3500 (-1552) ELOG 3496 (-1548)

MUD WT 9.0
VIS 50
LCM 1#

MUD WT 9.1
VIS 51
LCM 2#