



DRILL STEM TEST REPORT

Prepared For: **CMX Inc**

1706 N Waterfront Pkwy Bldg 300 Witchat KS
67206

ATTN: Ken Leblanc

Clafin #1-34

34-16-11 Barton

Start Date: 2015.03.30 @ 04:25:00

End Date: 2015.03.30 @ 11:53:00

Job Ticket #: 62914 DST #: 1

Trilobite Testing, Inc
1515 Commerce Parkway Hays, KS 67601
ph: 785-625-4778 fax: 785-625-5620

Printed: 2015.04.03 @ 09:14:01

CMX Inc
34-16-11 Barton
Clafin #1-34
DST # 1
Toronto
2015.03.30



TRILOBITE TESTING, INC.

DRILL STEM TEST REPORT

CMX Inc

34-16-11 Barton

1706 N Waterfront Pkw y Bldg 300 Witchat KS
67206

Claflin #1-34

Job Ticket: 62914

DST#: 1

ATTN: Ken Leblanc

Test Start: 2015.03.30 @ 04:25:00

GENERAL INFORMATION:

Formation: **Toronto**

Deviated: No Whipstock: ft (KB)

Time Tool Opened: 06:05:00

Time Test Ended: 11:53:00

Test Type: Conventional Bottom Hole (Initial)

Tester: Jared Scheck

Unit No: 55

Interval: 2984.00 ft (KB) To 3020.00 ft (KB) (TVD)

Reference Elevations: 1946.00 ft (KB)

Total Depth: 3020.00 ft (KB) (TVD)

1933.00 ft (CF)

Hole Diameter: 7.88 inches Hole Condition: Fair

KB to GR/CF: 13.00 ft

Serial #: 6666

Inside

Press@RunDepth: 75.67 psig @ 2985.00 ft (KB)

Capacity: 5000.00 psig

Start Date: 2015.03.30

End Date:

2015.03.30

Last Calib.:

2015.03.30

Start Time: 04:26:00

End Time:

11:53:00

Time On Btm:

2015.03.30 @ 06:04:00

Time Off Btm:

2015.03.30 @ 10:10:30

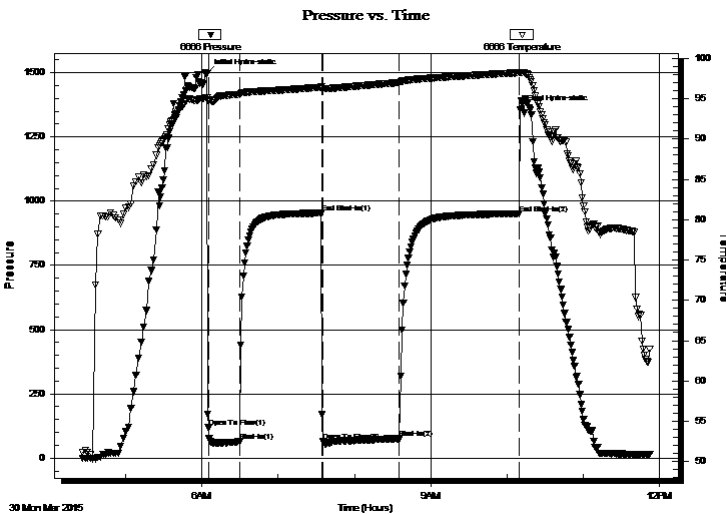
TEST COMMENT: IFP 30 Minutes-BOB in 1 minutes GTS 6 minutes

ISIP- 60 Minutes -No blow back

FFP- 60 Minutes BOB in 1 minutes

FSIP-90 Minutes-No blow back

PRESSURE SUMMARY



Time (Min.)	Pressure (psig)	Temp (deg F)	Annotation
0	1495.82	95.08	Initial Hydro-static
1	118.34	94.82	Open To Flow (1)
26	63.69	95.56	Shut-In(1)
90	953.80	96.45	End Shut-In(1)
92	65.23	96.28	Open To Flow (2)
152	75.67	97.03	Shut-In(2)
246	951.60	98.25	End Shut-In(2)
247	1357.50	98.26	Final Hydro-static

Recovery

Length (ft)	Description	Volume (bbl)
200.00	GMW 10%G 60%W 30%M	1.17
0.00	GTS	0.00

Gas Rates

	Choke (inches)	Pressure (psig)	Gas Rate (Mcf/d)
First Gas Rate	0.50	1.60	107.93
Last Gas Rate	0.50	0.60	101.18
Max. Gas Rate	0.50	5.10	131.54



TRILOBITE TESTING, INC.

DRILL STEM TEST REPORT

CMX Inc
 1706 N Waterfront Pkw y Bldg 300 Witchat KS
 67206
 ATTN: Ken Leblanc

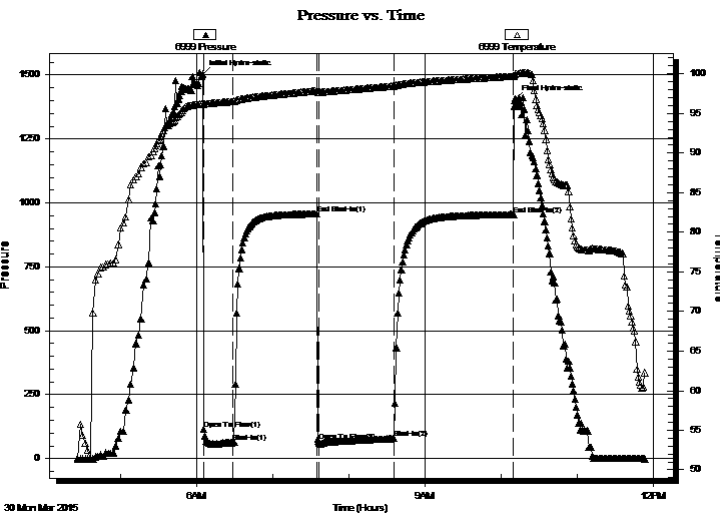
34-16-11 Barton
Clafin #1-34
 Job Ticket: 62914 **DST#: 1**
 Test Start: 2015.03.30 @ 04:25:00

GENERAL INFORMATION:

Formation: **Toronto**
 Deviated: No Whipstock: ft (KB)
 Time Tool Opened: 06:05:00
 Time Test Ended: 11:53:00
 Interval: **2984.00 ft (KB) To 3020.00 ft (KB) (TVD)**
 Total Depth: 3020.00 ft (KB) (TVD)
 Hole Diameter: 7.88 inches Hole Condition: Fair
 Test Type: Conventional Bottom Hole (Initial)
 Tester: Jared Scheck
 Unit No: 55
 Reference Elevations: 1946.00 ft (KB)
 1933.00 ft (CF)
 KB to GR/CF: 13.00 ft

Serial #: 6999 Outside
 Press@RunDepth: 954.88 psig @ 2986.00 ft (KB) Capacity: 5000.00 psig
 Start Date: 2015.03.30 End Date: 2015.03.30 Last Calib.: 2015.03.30
 Start Time: 04:26:00 End Time: 11:54:00 Time On Btm: 2015.03.30 @ 06:04:30
 Time Off Btm: 2015.03.30 @ 10:11:00

TEST COMMENT: IFP 30 Minutes-BOB in 1 minutes GTS 6 minutes
 ISIP- 60 Minutes -No blow back
 FFP- 60 Minutes BOB in 1 minutes
 FSIP-90 Minutes-No blow back



PRESSURE SUMMARY

Time (Min.)	Pressure (psig)	Temp (deg F)	Annotation
0	1503.12	96.35	Initial Hydro-static
1	116.40	96.17	Open To Flow (1)
24	63.47	96.53	Shut-In(1)
90	957.12	97.86	End Shut-In(1)
92	67.40	97.71	Open To Flow (2)
151	78.66	98.46	Shut-In(2)
246	954.88	99.71	End Shut-In(2)
247	1402.69	99.87	Final Hydro-static

Recovery

Length (ft)	Description	Volume (bbl)
200.00	GMW 10%G 60%W 30%M	1.17
0.00	GTS	0.00

Gas Rates

	Choke (inches)	Pressure (psig)	Gas Rate (Mcf/d)
First Gas Rate	0.50	1.60	107.93
Last Gas Rate	0.50	0.60	101.18
Max. Gas Rate	0.50	5.10	131.54



**TRILOBITE
TESTING, INC**

DRILL STEM TEST REPORT

TOOL DIAGRAM

CMX Inc

34-16-11 Barton

1706 N Waterfront Pkw y Bldg 300 Witchat KS
67206

Claflin #1-34

Job Ticket: 62914

DST#: 1

ATTN: Ken Leblanc

Test Start: 2015.03.30 @ 04:25:00

Tool Information

Drill Pipe:	Length: 2790.00 ft	Diameter: 3.80 inches	Volume: 39.14 bbl	Tool Weight: 1000.00 lb
Heavy Wt. Pipe:	Length: 0.00 ft	Diameter: 0.00 inches	Volume: 0.00 bbl	Weight set on Packer: 20000.00 lb
Drill Collar:	Length: 180.00 ft	Diameter: 2.25 inches	Volume: 0.89 bbl	Weight to Pull Loose: 68000.00 lb
			<u>Total Volume: 40.03 bbl</u>	Tool Chased 0.00 ft
Drill Pipe Above KB:	8.00 ft			String Weight: Initial 60000.00 lb
Depth to Top Packer:	2984.00 ft			Final 61000.00 lb
Depth to Bottom Packer:	ft			
Interval between Packers:	36.00 ft			
Tool Length:	58.00 ft			
Number of Packers:	2	Diameter: 6.75 inches		

Tool Comments:

Tool Description

Tool Description	Length (ft)	Serial No.	Position	Depth (ft)	Accum. Lengths
Shut In Tool	5.00			2967.00	
Hydraulic tool	5.00			2972.00	
Safety Joint	2.00			2974.00	
Packer	5.00			2979.00	22.00 Bottom Of Top Packer
Packer	5.00			2984.00	
Recorder	1.00	6666	Inside	2985.00	
Recorder	1.00	6999	Outside	2986.00	
Anchor	31.00			3017.00	
Bullnose	3.00			3020.00	36.00 Bottom Packers & Anchor
Total Tool Length:	58.00				



**TRILOBITE
TESTING, INC**

DRILL STEM TEST REPORT

FLUID SUMMARY

CMX Inc

34-16-11 Barton

1706 N Waterfront Pkw y Bldg 300 Witchat KS
67206

Claflin #1-34

Job Ticket: 62914

DST#: 1

ATTN: Ken Leblanc

Test Start: 2015.03.30 @ 04:25:00

Mud and Cushion Information

Mud Type: Gel Chem

Cushion Type:

Oil API:

deg API

Mud Weight: 9.00 lb/gal

Cushion Length:

ft

Water Salinity:

34000 ppm

Viscosity: 6.00 sec/qt

Cushion Volume:

bbbl

Water Loss: 10.58 in³

Gas Cushion Type:

Resistivity: ohm.m

Gas Cushion Pressure:

psig

Salinity: 3200.00 ppm

Filter Cake: 1.00 inches

Recovery Information

Recovery Table

Length ft	Description	Volume bbbl
200.00	GMW 10%G 60%W 30%M	1.166
0.00	GTS	0.000

Total Length: 200.00 ft Total Volume: 1.166 bbl

Num Fluid Samples: 0

Num Gas Bombs: 0

Serial #:

Laboratory Name:

Laboratory Location:

Recovery Comments: Resistivity.15@67



**TRILOBITE
TESTING, INC.**

DRILL STEM TEST REPORT

GAS RATES

CMX Inc

34-16-11 Barton

1706 N Waterfront Pkw y Bldg 300 Witchat KS
67206

Claflin #1-34

Job Ticket: 62914

DST#: 1

ATTN: Ken Leblanc

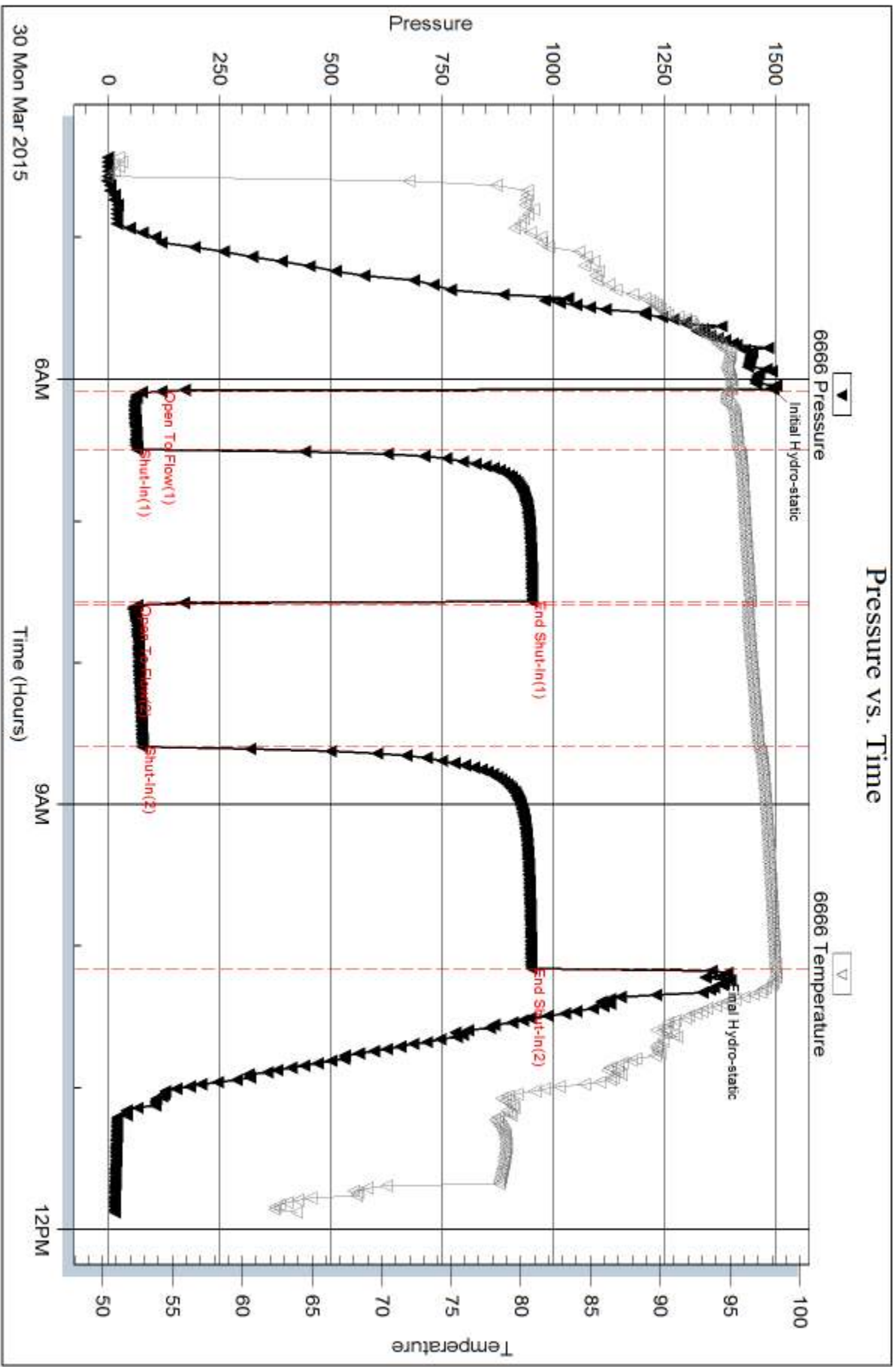
Test Start: 2015.03.30 @ 04:25:00

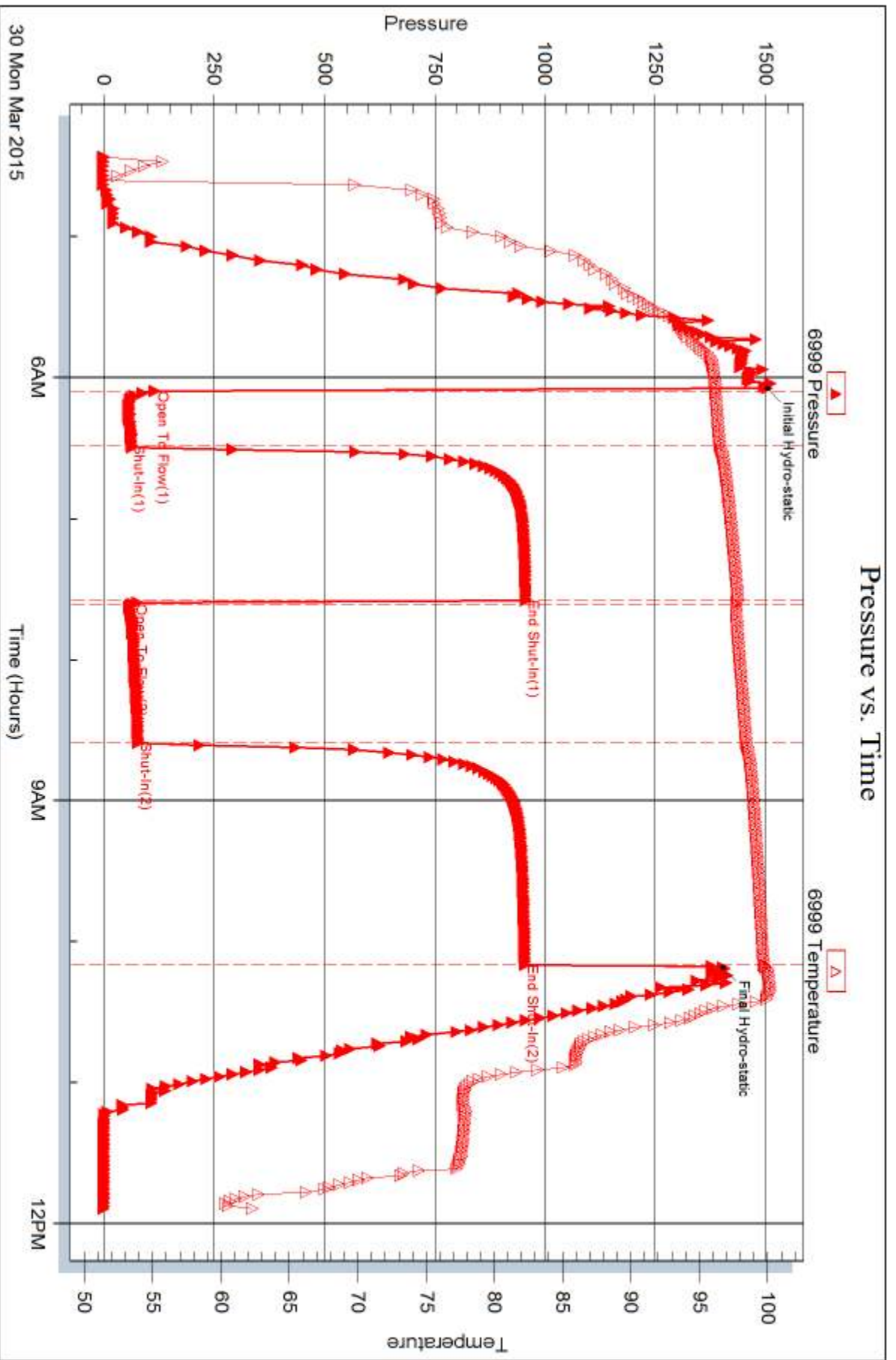
Gas Rates Information

Temperature: 59 (deg F)
Relative Density: 0.65
Z Factor: 0.8

Gas Rates Table

Flow Period	Elapsed Time	Choke (inches)	Pressure (psig)	Gas Rate (Mcf/d)
1	20	0.50	1.60	107.93
1	30	0.50	2.80	116.03
2	10	0.50	5.10	131.54
2	20	0.50	3.60	121.42
2	30	0.50	2.90	116.70
2	40	0.50	2.30	112.65
2	50	0.50	1.20	105.23
2	60	0.50	0.60	101.18







DRILL STEM TEST REPORT

Prepared For: **CMX Inc**

1706 N Waterfront Pkwy Bldg 300 Witchat KS
67206

ATTN: Ken Leblanc

Clafin #1-34

34-16-11 Barton,KS

Start Date: 2015.03.30 @ 23:10:00

End Date: 2015.03.31 @ 06:18:30

Job Ticket #: 62915 DST #: 2

Trilobite Testing, Inc
1515 Commerce Parkway Hays, KS 67601
ph: 785-625-4778 fax: 785-625-5620

Printed: 2015.04.03 @ 10:03:18

CMX Inc
34-16-11 Barton,KS
Clafin #1-34
DST # 2
LKC A-B
2015.03.30



TRILOBITE TESTING, INC

DRILL STEM TEST REPORT

CMX Inc
 1706 N Waterfront Pkwy Bldg 300 Witchat KS
 67206
 ATTN: Ken Leblanc

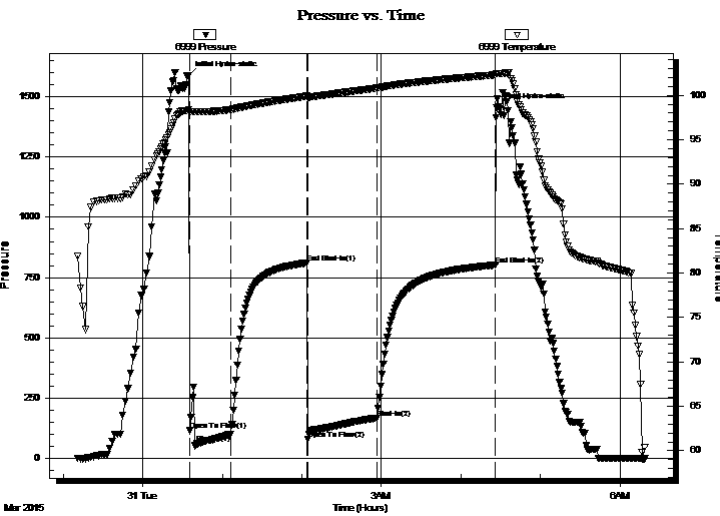
34-16-11 Barton,KS
Clafin #1-34
 Job Ticket: 62915 **DST#: 2**
 Test Start: 2015.03.30 @ 23:10:00

GENERAL INFORMATION:

Formation: **LKC A-B**
 Deviated: No Whipstock: ft (KB)
 Time Tool Opened: 00:35:30
 Time Test Ended: 06:18:30
 Interval: **3103.00 ft (KB) To 3130.00 ft (KB) (TVD)**
 Total Depth: 3130.00 ft (KB) (TVD)
 Hole Diameter: 7.88 inches Hole Condition: Good
 Test Type: Conventional Bottom Hole (Initial)
 Tester: Jared Scheck
 Unit No: 55-Great Bend-65
 Reference Elevations: 1946.00 ft (KB)
 1933.00 ft (CF)
 KB to GR/CF: 13.00 ft

Serial #: 6999 Outside
 Press@RunDepth: 169.21 psig @ 3105.00 ft (KB) Capacity: 5000.00 psig
 Start Date: 2015.03.30 End Date: 2015.03.31 Last Calib.: 2015.03.31
 Start Time: 23:11:00 End Time: 06:18:30 Time On Btm: 2015.03.31 @ 00:34:30
 Time Off Btm: 2015.03.31 @ 04:27:00

TEST COMMENT: IFP-30 Minutes-BOB in 5 minutes
 ISIP-60-Minutes-No blow back
 FFP-45-Minutes-BOB in 1 minutes GTS in 5 minutes see gas report
 FSIP-90 Minutes No blow back



PRESSURE SUMMARY

Time (Min.)	Pressure (psig)	Temp (deg F)	Annotation
0	1587.92	98.37	Initial Hydro-static
1	115.94	98.16	Open To Flow (1)
32	102.25	98.40	Shut-In(1)
89	810.69	99.91	End Shut-In(1)
90	81.96	99.80	Open To Flow (2)
142	169.21	100.81	Shut-In(2)
232	802.20	102.30	End Shut-In(2)
233	1452.23	102.44	Final Hydro-static

Recovery

Length (ft)	Description	Volume (bbl)
180.00	water 80%w 20%m	0.89
120.00	GOWM 10%g 10%o 60%w 20%m	1.68
180.00	OGMW 20%g 10%o 50%w 20%mud	2.52

Gas Rates

	Choke (inches)	Pressure (psig)	Gas Rate (Mcf/d)
First Gas Rate	0.13	7.90	8.35
Last Gas Rate	0.13	49.60	23.95
Max. Gas Rate	0.13	49.60	23.95



TRILOBITE TESTING, INC.

DRILL STEM TEST REPORT

CMX Inc

34-16-11 Barton,KS

1706 N Waterfront Pkw y Bldg 300 Witchat KS
67206

Claflin #1-34

Job Ticket: 62915

DST#: 2

ATTN: Ken Leblanc

Test Start: 2015.03.30 @ 23:10:00

GENERAL INFORMATION:

Formation: **LKC A-B**

Deviated: No Whipstock: ft (KB)

Time Tool Opened: 00:35:30

Time Test Ended: 06:18:30

Test Type: Conventional Bottom Hole (Initial)

Tester: Jared Scheck

Unit No: 55-Great Bend-65

Interval: 3103.00 ft (KB) To 3130.00 ft (KB) (TVD)

Reference Elevations: 1946.00 ft (KB)

Total Depth: 3130.00 ft (KB) (TVD)

1933.00 ft (CF)

Hole Diameter: 7.88 inches Hole Condition: Good

KB to GR/CF: 13.00 ft

Serial #: 6666 Inside

Press@RunDepth: 798.96 psig @ 3104.00 ft (KB)

Capacity: 5000.00 psig

Start Date: 2015.03.30

End Date:

2015.03.31

Last Calib.:

2015.03.31

Start Time:

23:11:00

End Time:

06:18:30

Time On Btm:

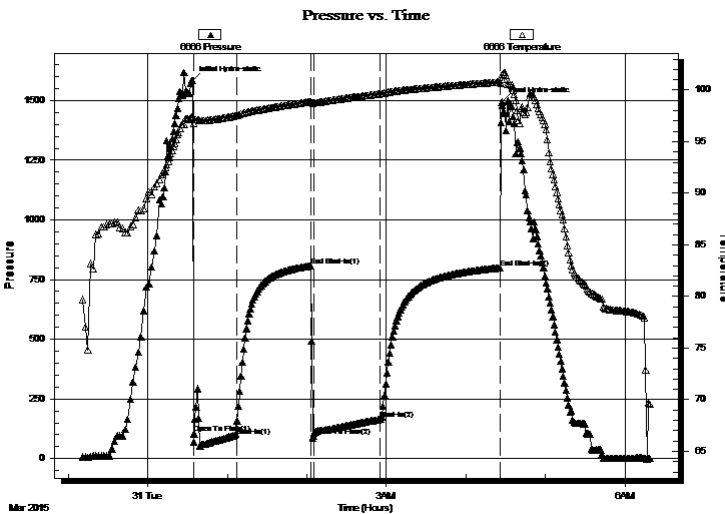
2015.03.31 @ 00:34:00

Time Off Btm:

2015.03.31 @ 04:27:00

TEST COMMENT: IFP-30 Minutes-BOB in 5 minutes
ISIP-60-Minutes-No blow back
FFP-45-Minutes-BOB in 1 minutes GTS in 5 minutes see gas report
FSIP-90 Minutes No blow back

PRESSURE SUMMARY



Time (Min.)	Pressure (psig)	Temp (deg F)	Annotation
0	1582.87	97.37	Initial Hydro-static
1	104.01	97.14	Open To Flow (1)
33	130.85	97.53	Shut-In(1)
89	807.22	98.88	End Shut-In(1)
91	93.78	98.75	Open To Flow (2)
142	164.23	99.62	Shut-In(2)
232	798.96	100.77	End Shut-In(2)
233	1493.59	101.06	Final Hydro-static

Recovery

Length (ft)	Description	Volume (bbl)
180.00	water 80%w 20%m	0.89
120.00	GOWM 10%g 10%o 60%w 20%m	1.68
180.00	OGMW 20%g 10%o 50%w 20%mud	2.52

Gas Rates

	Choke (inches)	Pressure (psig)	Gas Rate (Mcf/d)
First Gas Rate	0.13	7.90	8.35
Last Gas Rate	0.13	49.60	23.95
Max. Gas Rate	0.13	49.60	23.95



**TRILOBITE
TESTING, INC**

DRILL STEM TEST REPORT

TOOL DIAGRAM

CMX Inc

34-16-11 Barton,KS

1706 N Waterfront Pkw y Bldg 300 Witchat KS
67206

Claflin #1-34

Job Ticket: 62915

DST#: 2

ATTN: Ken Leblanc

Test Start: 2015.03.30 @ 23:10:00

Tool Information

Drill Pipe:	Length: 2922.00 ft	Diameter: 3.80 inches	Volume: 40.99 bbl	Tool Weight: 1000.00 lb
Heavy Wt. Pipe:	Length: 0.00 ft	Diameter: 0.00 inches	Volume: 0.00 bbl	Weight set on Packer: 20000.00 lb
Drill Collar:	Length: 180.00 ft	Diameter: 2.25 inches	Volume: 0.89 bbl	Weight to Pull Loose: 75000.00 lb
			<u>Total Volume: 41.88 bbl</u>	Tool Chased 0.00 ft
Drill Pipe Above KB:	21.00 ft			String Weight: Initial 60000.00 lb
Depth to Top Packer:	3103.00 ft			Final 62000.00 lb
Depth to Bottom Packer:	ft			
Interval between Packers:	26.00 ft			
Tool Length:	48.00 ft			
Number of Packers:	2	Diameter: 6.75 inches		

Tool Comments:

Tool Description

Tool Description	Length (ft)	Serial No.	Position	Depth (ft)	Accum. Lengths
Shut In Tool	5.00			3086.00	
Hydraulic tool	5.00			3091.00	
Safety Joint	2.00			3093.00	
Packer	5.00			3098.00	22.00 Bottom Of Top Packer
Packer	5.00			3103.00	
Recorder	1.00	6666	Inside	3104.00	
Recorder	1.00	6999	Outside	3105.00	
Anchor	21.00			3126.00	
Bullnose	3.00			3129.00	26.00 Bottom Packers & Anchor
Total Tool Length:	48.00				



**TRILOBITE
TESTING, INC**

DRILL STEM TEST REPORT

FLUID SUMMARY

CMX Inc

34-16-11 Barton,KS

1706 N Waterfront Pkw y Bldg 300 Witchat KS
67206

Claflin #1-34

Job Ticket: 62915

DST#: 2

ATTN: Ken Leblanc

Test Start: 2015.03.30 @ 23:10:00

Mud and Cushion Information

Mud Type: Gel Chem

Cushion Type:

Oil API:

deg API

Mud Weight: 9.00 lb/gal

Cushion Length:

ft

Water Salinity:

85000 ppm

Viscosity: 7.10 sec/qt

Cushion Volume:

bbbl

Water Loss: 10.17 in³

Gas Cushion Type:

Resistivity: ohm.m

Gas Cushion Pressure:

psig

Salinity: 2800.00 ppm

Filter Cake: 1.00 inches

Recovery Information

Recovery Table

Length ft	Description	Volume bbl
180.00	water 80%w 20%m	0.885
120.00	GOWM 10%g 10%o 60%w 20%m	1.683
180.00	OGMW 20%g 10%o 50%w 20%mud	2.525

Total Length: 480.00 ft Total Volume: 5.093 bbl

Num Fluid Samples: 0

Num Gas Bombs: 0

Serial #:

Laboratory Name:

Laboratory Location:

Recovery Comments: 85,000 resistivity



**TRILOBITE
TESTING, INC.**

DRILL STEM TEST REPORT

GAS RATES

CMX Inc

34-16-11 Barton,KS

1706 N Waterfront Pkw y Bldg 300 Witchat KS
67206

Claflin #1-34

Job Ticket: 62915

DST#: 2

ATTN: Ken Leblanc

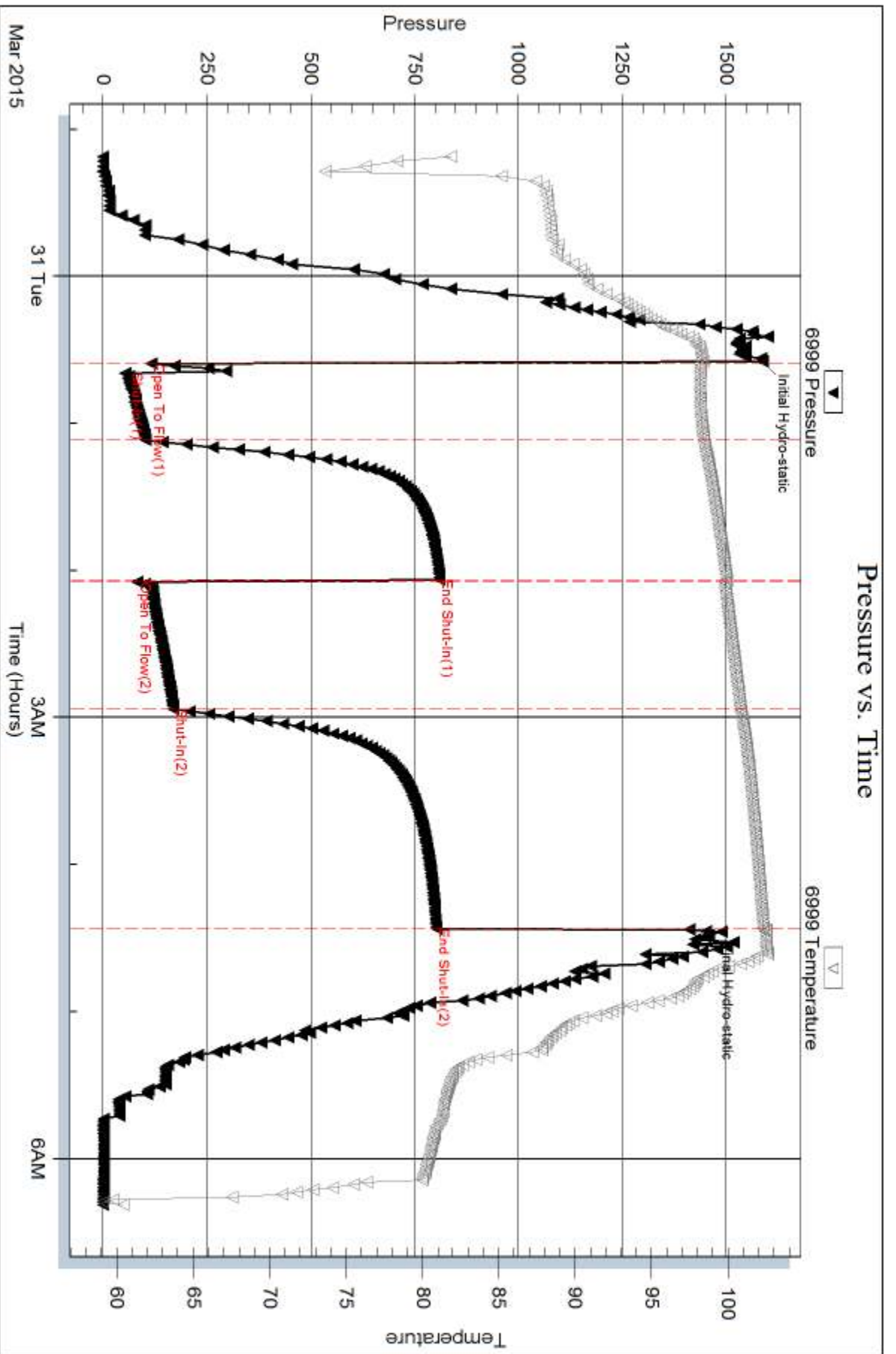
Test Start: 2015.03.30 @ 23:10:00

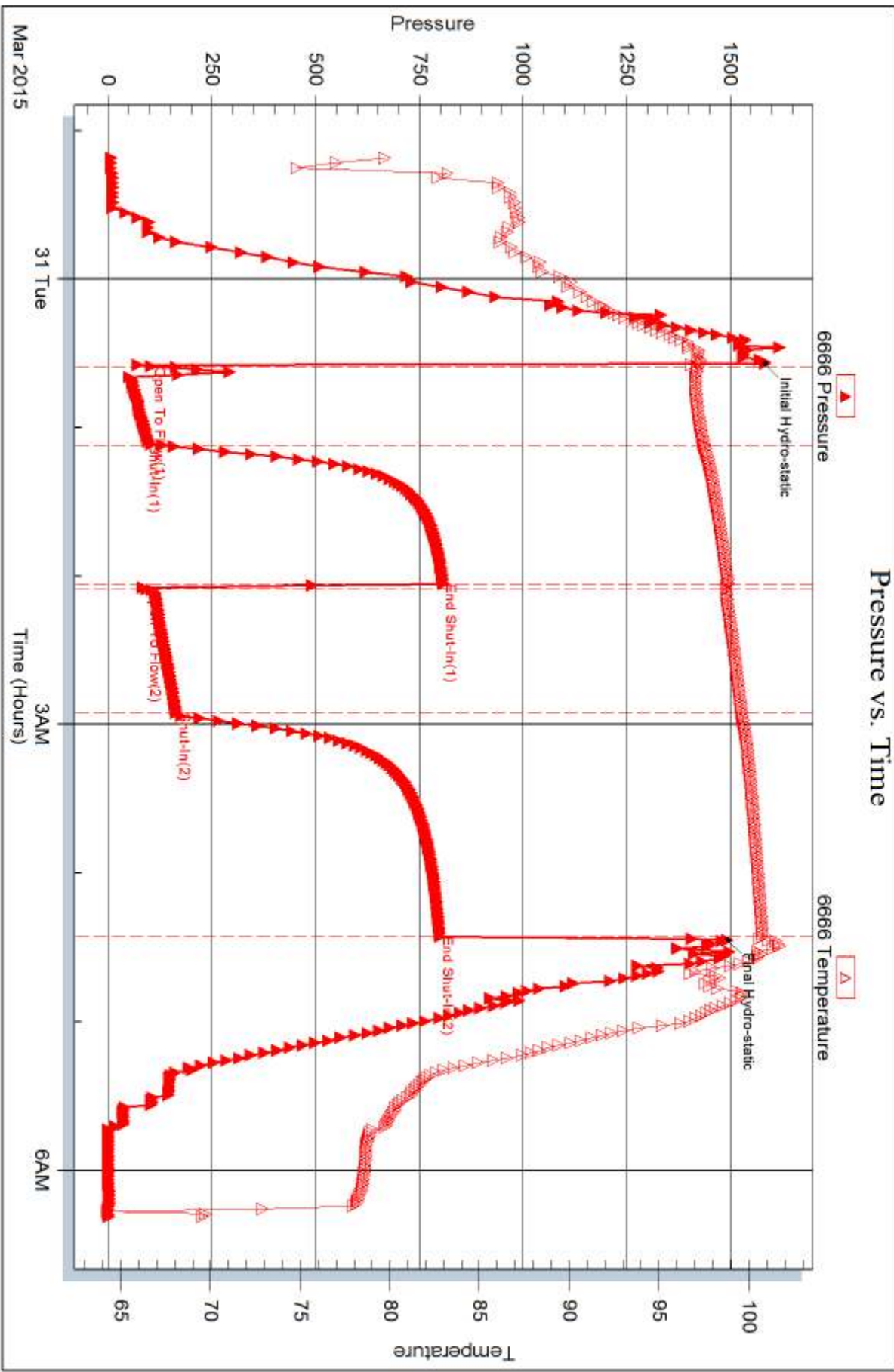
Gas Rates Information

Temperature: 59 (deg F)
Relative Density: 0.65
Z Factor: 0.8

Gas Rates Table

Flow Period	Elapsed Time	Choke (inches)	Pressure (psig)	Gas Rate (Mcf/d)
2	10	0.13	7.90	8.35
2	20	0.13	13.00	10.26
2	30	0.13	29.70	16.51
2	40	0.13	49.60	23.95







DRILL STEM TEST REPORT

Prepared For: **CMX Inc**

1706 N Waterfront Pkwy Bldg 300 Witchat KS
67206

ATTN: Ken Leblanc

Clafin #1-34

34-16-11 Barton,KS

Start Date: 2015.04.01 @ 14:31:00

End Date: 2015.04.01 @ 22:10:00

Job Ticket #: 62916 DST #: 3

Trilobite Testing, Inc
1515 Commerce Parkway Hays, KS 67601
ph: 785-625-4778 fax: 785-625-5620

Printed: 2015.04.03 @ 09:52:07



TRILOBITE TESTING, INC.

DRILL STEM TEST REPORT

CMX Inc

34-16-11 Barton,KS

1706 N Waterfront Pkw y Bldg 300 Witchat KS
67206

Claflin #1-34

Job Ticket: 62916

DST#: 3

ATTN: Ken Leblanc

Test Start: 2015.04.01 @ 14:31:00

GENERAL INFORMATION:

Formation: **Arbuckle Dolomite**

Deviated: No Whipstock: ft (KB)

Time Tool Opened: 16:13:30

Time Test Ended: 22:10:00

Test Type: Conventional Bottom Hole (Reset)

Tester: Jared Scheck

Unit No: 55

Interval: 3364.00 ft (KB) To 3388.00 ft (KB) (TVD)

Reference Elevations: 1946.00 ft (KB)

Total Depth: 3388.00 ft (KB) (TVD)

1933.00 ft (CF)

Hole Diameter: 7.88 inches Hole Condition: Fair

KB to GR/CF: 13.00 ft

Serial #: 9999 Inside

Press@RunDepth: 96.21 psig @ 3365.00 ft (KB)

Capacity: 5000.00 psig

Start Date: 2015.04.01

End Date:

2015.04.01

Last Calib.: 2015.04.01

Start Time: 14:31:00

End Time:

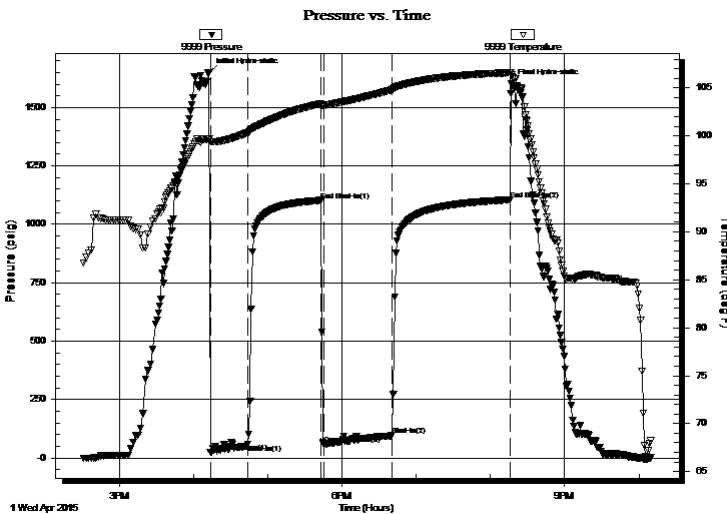
22:10:00

Time On Btm: 2015.04.01 @ 16:12:30

Time Off Btm: 2015.04.01 @ 20:17:00

TEST COMMENT: IFP-30 Minutes-Weak blow built 1"
ISIP-60 Minutes-No blow back
FFP-60 Minutes-Very weak blow built 2 1/8"
FSIP-90 Minutes-No blow back

PRESSURE SUMMARY



Time (Min.)	Pressure (psig)	Temp (deg F)	Annotation
0	1650.50	99.72	Initial Hydro-static
1	23.39	99.40	Open To Flow (1)
31	59.47	100.34	Shut-In(1)
91	1102.51	103.37	End Shut-In(1)
93	59.52	103.19	Open To Flow (2)
148	96.21	104.80	Shut-In(2)
243	1104.79	106.59	End Shut-In(2)
245	1603.06	106.43	Final Hydro-static

Recovery

Length (ft)	Description	Volume (bbl)
60.00	GO M 30% Gas 50% Oil 20% Mud	0.30
120.00	GO M 10% G 60% Oil 30% Mud	0.59
60.00	Clean Oil	0.84

Gas Rates

	Choke (inches)	Pressure (psig)	Gas Rate (Mcf/d)

* Recovery from multiple tests



**TRILOBITE
TESTING, INC**

DRILL STEM TEST REPORT

TOOL DIAGRAM

CMX Inc

34-16-11 Barton,KS

1706 N Waterfront Pkw y Bldg 300 Witchat KS
67206

Claflin #1-34

Job Ticket: 62916

DST#: 3

ATTN: Ken Leblanc

Test Start: 2015.04.01 @ 14:31:00

Tool Information

Drill Pipe:	Length: 3175.00 ft	Diameter: 3.80 inches	Volume: 44.54 bbl	Tool Weight:	1000.00 lb
Heavy Wt. Pipe:	Length: 0.00 ft	Diameter: 0.00 inches	Volume: 0.00 bbl	Weight set on Packer:	20000.00 lb
Drill Collar:	Length: 180.00 ft	Diameter: 2.25 inches	Volume: 0.89 bbl	Weight to Pull Loose:	80000.00 lb
			<u>Total Volume: 45.43 bbl</u>	Tool Chased	0.00 ft
Drill Pipe Above KB:	13.00 ft			String Weight: Initial	65000.00 lb
Depth to Top Packer:	3364.00 ft			Final	65000.00 lb
Depth to Bottom Packer:	ft				
Interval between Packers:	24.00 ft				
Tool Length:	46.00 ft				
Number of Packers:	2	Diameter: 6.75 inches			

Tool Comments:

Tool Description

Tool Description	Length (ft)	Serial No.	Position	Depth (ft)	Accum. Lengths
Shut In Tool	5.00			3347.00	
Hydraulic tool	5.00			3352.00	
Safety Joint	2.00			3354.00	
Packer	5.00			3359.00	22.00 Bottom Of Top Packer
Packer	5.00			3364.00	
Recorder	1.00	9999	Inside	3365.00	
Recorder	1.00	6999	Outside	3366.00	
Anchor	19.00			3385.00	
Bullnose	3.00			3388.00	24.00 Bottom Packers & Anchor
Total Tool Length:	46.00				



**TRILOBITE
TESTING, INC**

DRILL STEM TEST REPORT

FLUID SUMMARY

CMX Inc

34-16-11 Barton,KS

1706 N Waterfront Pkw y Bldg 300 Witchat KS
67206

Claflin #1-34

Job Ticket: 62916

DST#: 3

ATTN: Ken Leblanc

Test Start: 2015.04.01 @ 14:31:00

Mud and Cushion Information

Mud Type: Gel Chem
Mud Weight: 9.00 lb/gal
Viscosity: 76.00 sec/qt
Water Loss: 11.38 in³
Resistivity: ohm.m
Salinity: 3400.00 ppm
Filter Cake: 1.00 inches

Cushion Type:
Cushion Length: ft
Cushion Volume: bbl
Gas Cushion Type:
Gas Cushion Pressure: psig

Oil API: 45 deg API
Water Salinity: ppm

Recovery Information

Recovery Table

Length ft	Description	Volume bbl
60.00	GO M 30%Gas 50% Oil 20% Mud	0.295
120.00	GO M 10%G 60%Oil 30%Mud	0.590
60.00	Clean Oil	0.842

Total Length: 240.00 ft Total Volume: 1.727 bbl

Num Fluid Samples: 0

Num Gas Bombs: 0

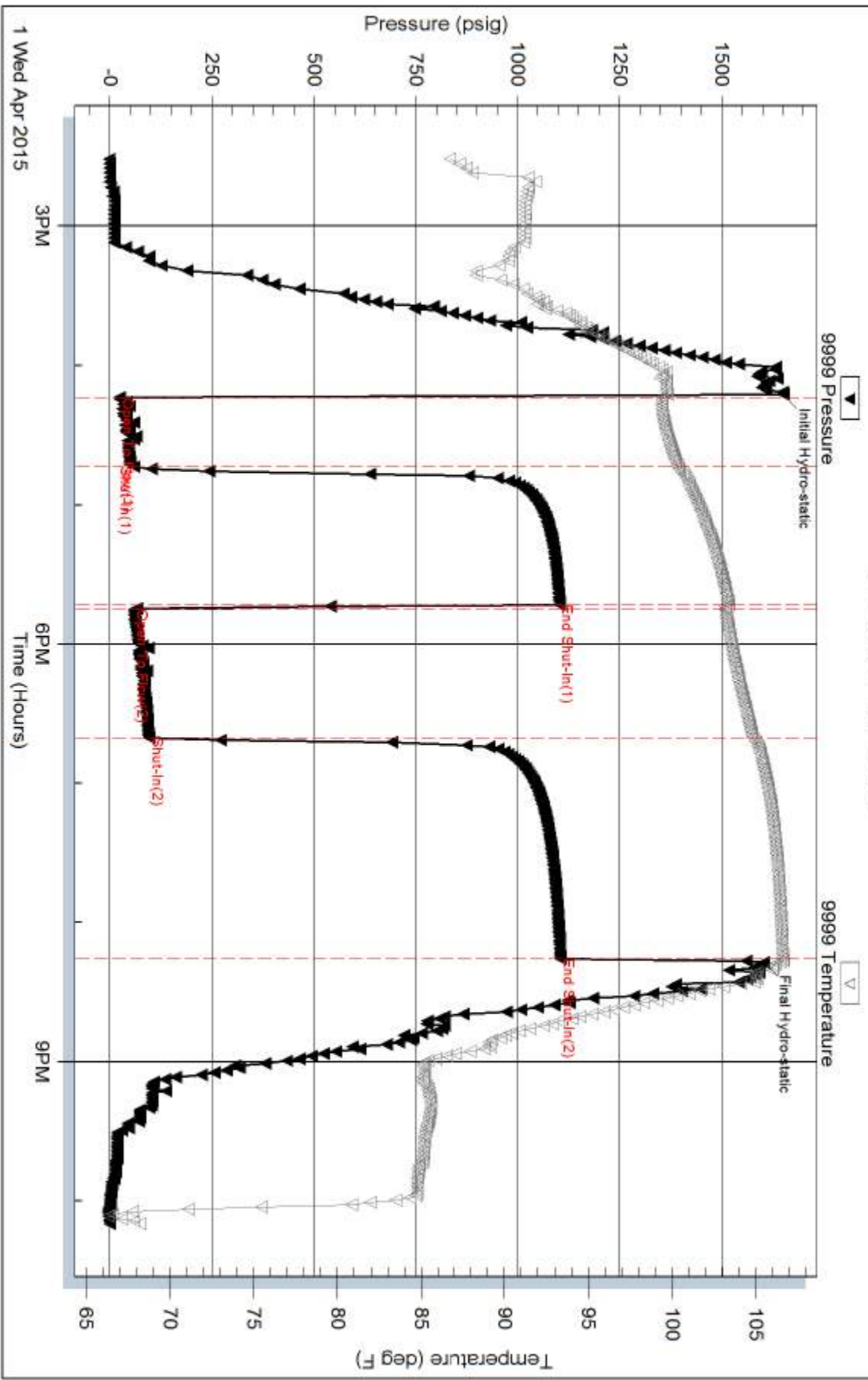
Serial #:

Laboratory Name:

Laboratory Location:

Recovery Comments: 45 Gravity

Pressure vs. Time





TRILOBITE TESTING INC.

1515 Commerce Parkway • Hays, Kansas 67601

Test Ticket

NO. 62914

Well Name & No. Claflin # A-34 Test No. 1 Date 3-30-
 Company CMX Inc Elevation 1946 KB 1933 GL
 Address 1706 N Waterfront Pkwy Bldg 300B Wichita KS 67206
 Co. Rep / Geo. Ken Leblanc Rig Duke Drilling Rig #7
 Location: Sec. 34 Twp. 1C Rge. 11 Co. Barton State KS

Interval Tested 2984 - 3020 Zone Tested Toronto
 Anchor Length 36 Drill Pipe Run _____ Mud Wt. 4
 Top Packer Depth 2979 Drill Collars Run _____ Vis 6
 Bottom Packer Depth 2984 Wt. Pipe Run _____ WL 10.6
 Total Depth 3020 Chlorides 3.200 ppm System LCM _____

Blow Description FFP - Strong Blow Built Bottom of Bucket in 1 minute Gas Report
FFP - Strong Blow Built Bottom of Bucket in 1 minute Gas Report
FFP - Strong Blow Built Bottom of Bucket in 1 minute Gas Report
FFP - Strong Blow Built Bottom of Bucket in 1 minute Gas Report

Rec	Feet of	%gas	%oil	%water	%mud
<u>200</u>	<u>GM W</u>	<u>10</u>		<u>60</u>	<u>30</u>
<u>2965</u>	<u>Gas in pipe</u>				
____	____	%gas	%oil	%water	%mud
____	____	%gas	%oil	%water	%mud
____	____	%gas	%oil	%water	%mud

Rec Total _____ BHT _____ Gravity _____ API RW 15 @ 67 °F Chlorides 34,000 ppm

(A) Initial Hydrostatic 14.95 Test 1050 T-On Location 4:25 AM
 (B) First Initial Flow 118 Jars _____ T-Started 5:00 AM
 (C) First Final Flow 63 Safety Joint 75 T-Open 6:35 AM
 (D) Initial Shut-In 953 Circ Sub _____ T-Pulled 10:35 AM
 (E) Second Initial Flow 65 Hourly Standby _____ T-Out 13 1/2 max Gas Gauge
 (F) Second Final Flow 75 Mileage 65 RT Great Bend Comments 2 Gas Samples
 (G) Final Shut-In 951 Sampler 65 was taken
 (H) Final Hydrostatic 1357 Straddle _____ Ruined Shale Packer _____
 Shale Packer _____ Ruined Packer _____
 Extra Packer _____ Extra Copies _____
 Initial Open 30 Extra Recorder _____ Sub Total 0
 Initial Shut-In 60 Day Standby _____ Total 1190
 Final Flow 60 Accessibility _____ MP/DST Disc't _____
 Final Shut-In 90 Sub Total 1190

Approved By _____ Our Representative [Signature]
 Trilobite Testing Inc. shall not be liable for damaged of any kind of the property or personnel of the one for whom a test is made, or for any loss suffered or sustained, directly or indirectly, through the use of its equipment, or its statements or opinion concerning the results of any test, tools lost or damaged in the hole shall be paid for at cost by the party for whom the test is made.



TRILOBITE TESTING INC.

1515 Commerce Parkway • Hays, Kansas 67601

Test Ticket

NO. 62915

Well Name & No. Clafin # 1-34 Test No. 2 Date 3/31/15
 Company CMX Inc Elevation 1946 KB 1933 GL
 Address 1706 N Waterfront Pkwy Bldg 300B Wichita KS
 Co. Rep / Geo. Ken Leblanc Rig Duke Drilling R. # 7
 Location: Sec. 34 Twp. 16 Rge. 11 Co. Barber State KS

Interval Tested 3103 - 3130 Zone Tested Lansing AC A-B
 Anchor Length 27 Drill Pipe Run 244 Mud Wt. 9
 Top Packer Depth 3098 Drill Collars Run _____ Vis 7.10
 Bottom Packer Depth 3103 Wt. Pipe Run _____ WL 10-2
 Total Depth 3130 Chlorides 2800 ppm System LCM _____

Blow Description IFP - Strong Blow Built Bottom of Bucket in 5 minutes
ISTP - NO Blow Back
FIP - Strong Blow Built Bottom of Bucket in 1 minute
FSTP - NO Blow Back

Rec	Feet of	%gas	%oil	%water	%mud
<u>180</u>	<u>06 c m v</u>	<u>20</u>	<u>10</u>	<u>50</u>	<u>20</u>
<u>120</u>	<u>60 W M</u>	<u>10</u>	<u>10</u>	<u>50</u>	<u>20</u>
<u>180</u>	<u>water</u>			<u>80</u>	<u>10</u>
<u>2442</u>	<u>Gas in pipe</u>				

Rec Total _____ BHT _____ Gravity _____ API RW -8 @ 68 °F Chlorides 85,000 ppm

- (A) Initial Hydrostatic 1587
- (B) First Initial Flow 115
- (C) First Final Flow 102
- (D) Initial Shut-In 810
- (E) Second Initial Flow 81
- (F) Second Final Flow 169
- (G) Final Shut-In 802
- (H) Final Hydrostatic 1452

- Test 1050
- Jars _____
- Safety Joint 75
- Circ Sub _____
- Hourly Standby _____
- Mileage 65 RT Great Bend
- Sampler 65
- Straddle _____
- Shale Packer _____
- Extra Packer _____
- Extra Recorder _____
- Day Standby _____
- Accessibility _____
- Sub Total 1190

T-On Location 11:40 10:50
 T-Started 11:55 11:10
 T-Open 12:35
 T-Pulled 4:20
 T-Out 6:18

Comments _____
 Ruined Shale Packer _____
 Ruined Packer _____
 Extra Copies _____
 Sub Total 0
 Total 1190
 MP/DST Disc't _____

Initial Open 30
 Initial Shut-In 60
 Final Flow 45
 Final Shut-In 90

Approved By _____ Our Representative [Signature]

Trilobite Testing Inc. shall not be liable for damaged of any kind of the property or personnel of the one for whom a test is made, or for any loss suffered or sustained, directly or indirectly, through the use of its equipment, or its statements or opinion concerning the results of any test, tools lost or damaged in the hole shall be paid for at cost by the party for whom the test is made.



TRILOBITE TESTING INC.

1515 Commerce Parkway • Hays, Kansas 67601

Test Ticket

NO. 62916

Well Name & No. Clafflin # 1-34 Test No. 3 Date 7-1-2015
 Company CMX Inc Elevation 1946 KB 1933 GL
 Address 1706 N Waterfront PKWY Bldg 300B Wichita KS 67206
 Co. Rep / Geo. Ken Heblanc Rig Duke Drilling Rig # 7
 Location: Sec. 34 Twp. 16 Rge. 11 Co. Barton State KS

Interval Tested 3364-3388 Zone Tested Articulate Dolomite
 Anchor Length 24 Drill Pipe Run _____ Mud Wt. 9
 Top Packer Depth 3324 Drill Collars Run _____ Vis 6.1
 Bottom Packer Depth 3364 Wt. Pipe Run _____ WL 11.4
 Total Depth 3388 Chlorides 3400 ppm System LCM

Blow Description IFP - Weak Blow Built' line into water in 30 minutes
ISIP - NO Blow Back
FFP - Very Weak Blow Built to 2 1/8" in bucket
FSIP - NO Blow Back

Rec	Feet of	%gas	%oil	%water	%mud
<u>60</u>	<u>60 cm</u>	<u>30</u>	<u>50</u>	<u>20</u>	<u>0</u>
<u>60</u>	<u>60 cm</u>	<u>10</u>	<u>60</u>	<u>30</u>	<u>0</u>
<u>60</u>	<u>60 cm</u>	<u>10</u>	<u>60</u>	<u>30</u>	<u>0</u>
<u>5</u>	<u>clean oil</u>				

Rec Total 185 BHT 106 Gravity 45 API RW corrected @ _____ °F Chlorides _____ ppm

(A) Initial Hydrostatic 11650 Test 1050 T-On Location 2:00pm
 (B) First Initial Flow 23 Jars _____ T-Started 2:30pm
 (C) First Final Flow 59 Safety Joint 75 T-Open 4:10pm
 (D) Initial Shut-In 1102 Circ Sub _____ T-Pulled 8:10
 (E) Second Initial Flow 59 Hourly Standby _____ T-Out _____
 (F) Second Final Flow 96 Mileage 65 RT Grabber Comments _____
 (G) Final Shut-In 1104 Sampler 65 _____
 (H) Final Hydrostatic 11603 Straddle _____ Ruined Shale Packer _____
 Shale Packer _____ Ruined Packer _____
 Extra Packer _____ Extra Copies _____
 Extra Recorder _____ Sub Total 1190
 Day Standby _____ Total _____
 Accessibility _____ MP/DST Disc't _____

Initial Open 30
 Initial Shut-In 60
 Final Flow 60
 Final Shut-In 90
 Sub Total 1190

Approved By Ken Heblanc Our Representative [Signature]

Trilobite Testing Inc. shall not be liable for damaged or any kind of the property or personnel of the one for whom a test is made, or for any loss suffered or sustained, directly or indirectly, through the use of its equipment, or its statements or opinion concerning the results of any test, tools lost or damaged in the hole shall be paid for at cost by the party for whom the test is made.