



TEMPORARY ABANDONMENT WELL APPLICATION

OPERATOR: License# _____
 Name: _____
 Address 1: _____
 Address 2: _____
 City: _____ State: _____ Zip: _____ + _____
 Contact Person: _____
 Phone: (_____) _____
 Contact Person Email: _____
 Field Contact Person: _____
 Field Contact Person Phone: (_____) _____

API No. 15- _____
 Spot Description: _____
 _____ - _____ - _____ - _____ Sec. _____ Twp. _____ S. R. _____ E W
 _____ feet from N / S Line of Section
 _____ feet from E / W Line of Section
 GPS Location: Lat: _____, Long: _____
(e.g. xx.xxxxx) (e.g. -xxx.xxxxx)
 Datum: NAD27 NAD83 WGS84
 County: _____ Elevation: _____ GL KB
 Lease Name: _____ Well #: _____
 Well Type: (check one) Oil Gas OG WSW Other: _____
 SWD Permit #: _____ ENHR Permit #: _____
 Gas Storage Permit #: _____
 Spud Date: _____ Date Shut-In: _____

	Conductor	Surface	Production	Intermediate	Liner	Tubing
Size						
Setting Depth						
Amount of Cement						
Top of Cement						
Bottom of Cement						

Casing Fluid Level from Surface: _____ How Determined? _____ Date: _____
 Casing Squeeze(s): _____ to _____ w / _____ sacks of cement, _____ to _____ w / _____ sacks of cement. Date: _____
(top) (bottom) (top) (bottom)
 Do you have a valid Oil & Gas Lease? Yes No
 Depth and Type: Junk in Hole at _____ Tools in Hole at _____ Casing Leaks: Yes No Depth of casing leak(s): _____
(depth) (depth)
 Type Completion: ALT. I ALT. II Depth of: DV Tool: _____ w / _____ sacks of cement Port Collar: _____ w / _____ sack of cement
(depth) (depth)
 Packer Type: _____ Size: _____ Inch Set at: _____ Feet
 Total Depth: _____ Plug Back Depth: _____ Plug Back Method: _____

Geological Data:

Formation Name	Formation Top	Formation Base	Completion Information
1. _____	At: _____	to _____ Feet	Perforation Interval _____ to _____ Feet or Open Hole Interval _____ to _____ Feet
2. _____	At: _____	to _____ Feet	Perforation Interval _____ to _____ Feet or Open Hole Interval _____ to _____ Feet

UNDER PENALTY OF PERJURY I HEREBY ATTEST THAT THE INFORMATION CONTAINED HEREIN IS TRUE AND CORRECT TO THE BEST OF MY KNOWLEDGE

Submitted Electronically

Do NOT Write in This Space - KCC USE ONLY	Date Tested: _____	Results: _____	Date Plugged: _____	Date Repaired: _____	Date Put Back in Service: _____
	Review Completed by: _____ Comments: _____				
TA Approved: <input type="checkbox"/> Yes <input type="checkbox"/> Denied Date: _____					

Mail to the Appropriate KCC Conservation Office:

	KCC District Office #1 - 210 E. Frontview, Suite A, Dodge City, KS 67801	Phone 620.225.8888
	KCC District Office #2 / UPGS - 3450 N. Rock Road, Building 600, Suite 601, Wichita, KS 67226	Phone 316.630.4000
	KCC District Office #3 - 1500 SW Seventh Steet, Chanute, KS 66720	Phone 620.432.2300
	KCC District Office #4 - 2301 E. 13th Street, Hays, KS 67601-2651	Phone 785.625.0550



PIONEER

Pioneer Energy Services

**Sonic Cement
Bond Log**

Company **McElvain Energy**
Well **Faulkner No. 5-3H**
Field **McCall**
County **Trego** State **Kansas**

Location **NE-NW** Other Services

Sec: **5** Twp: **11** Rge: **22**

Permanent Datum **Ground Level** Elevation **2281**
Log Measured From **Kelly Bushing** 13 Ft. Above Perm. Datum
Drilling Measured From **Kelly Bushing** K.B. 2294
D.F. 2294
G.L. 2281

Run Number	One	
Date Survey	03-25-2015	
Date Cementing	07-22-2013	
Type Cementing Operation	Primary	
Depth Driller	3500	
Depth Logger	3495	
Logged Interval	3493 to 0	
Casing Driller	5.5 @ TD	@
Float Collar -- D.V. Tool	////	////
Squeeze Depth	////	
Amount & Type Cement	////	
Amount & Type Admix	////	
Type Fluid In Hole	Water	
Fluid Level	Full	
Salinity PPM CL	////	
Weight lb/gal -- Vis.	////	////
Approx. Logged Cement Top	////	
Calculated Cement Top	////	
Max. Hole Temperature	116	
Tool No.	RBT 12	
Spacing Recorded	3' 5"	
Equipment -- Location	71 Hays	
Recorded By	Scott Clemont	
Witnessed By	Cole Thomas	

<<< Fold Here >>>

All interpretations are opinions based on inferences from electrical or other measurements and we cannot and do not guarantee the accuracy or correctness of any interpretation, and we shall not, except in the case of gross or willful negligence on our part, be liable or responsible for any loss, costs, damages, or expenses incurred or sustained by anyone resulting from any interpretation made by any of our officers, agents or employees. These interpretations are also subject to our general terms and conditions set out in our current Price Schedule.

Comments

Thank you for using Pioneer Energy Services
785.625.3858
Ogallah Kansas,
North to A Rd, 3.5 West
South Into



Main Pass

Database File: mcelvain_faulkner_#5 h3.db
 Dataset Pathname: sgrcbl/pass4.1
 Presentation Format: scbl02
 Dataset Creation: Wed Mar 25 10:16:14 2015 by Calc SCH 111116
 Charted by: Depth in Feet scaled 1:240

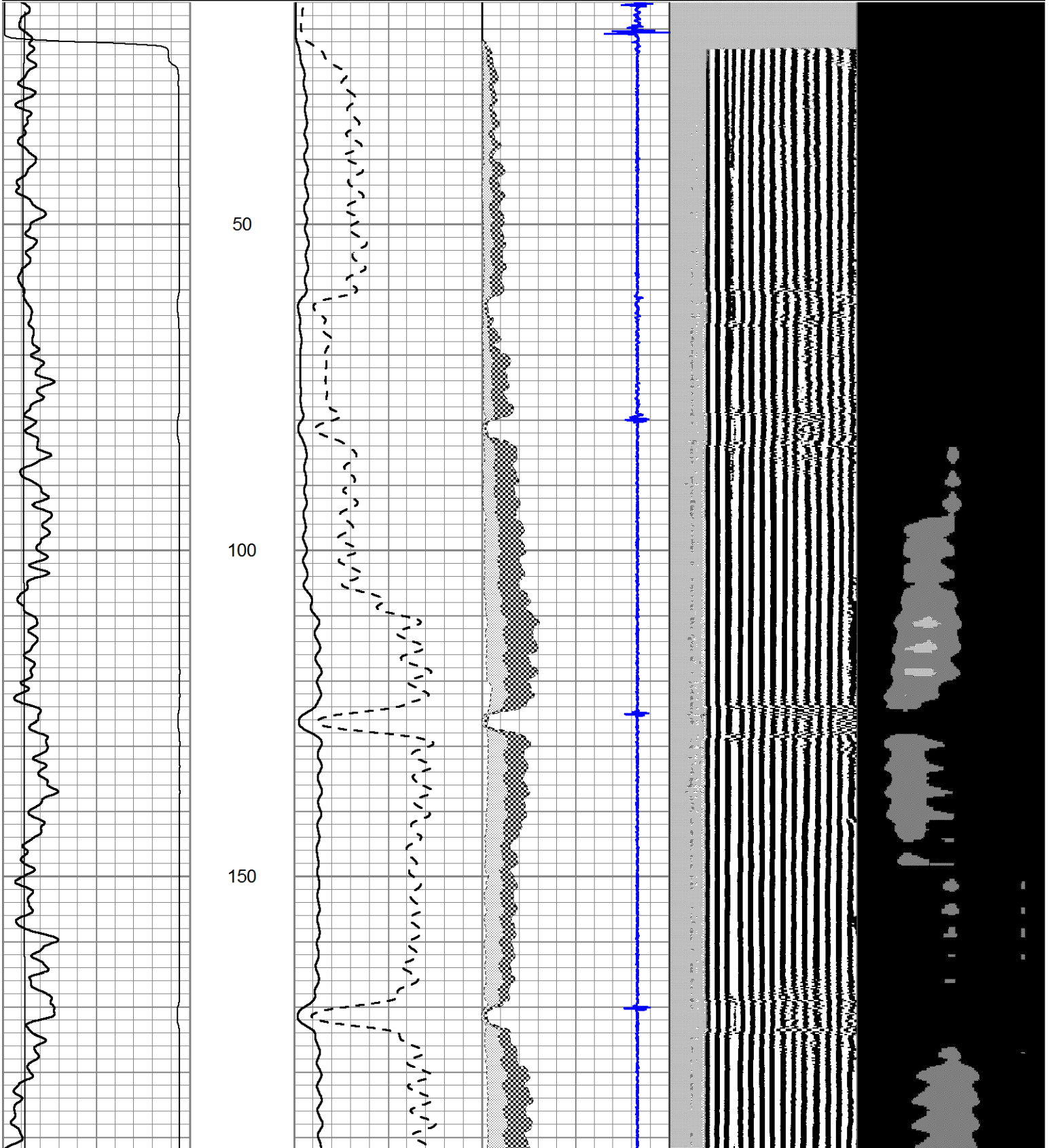
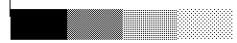
0	GR	150
0	LTEN (lb)	3000
TT3FT		
1200	(usec)	254

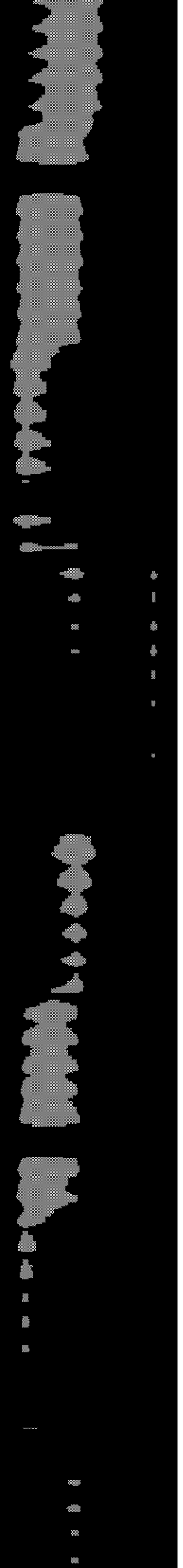
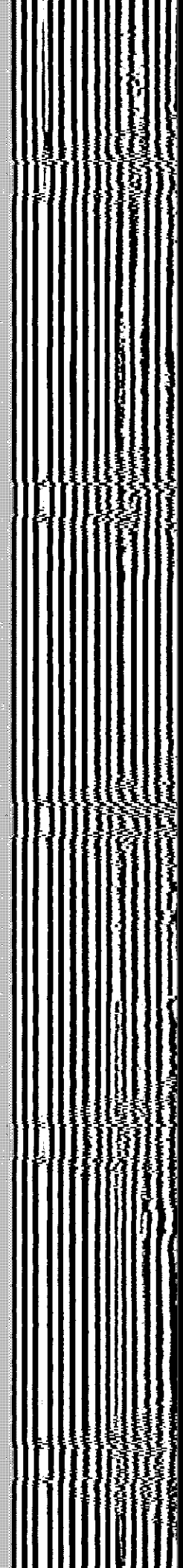
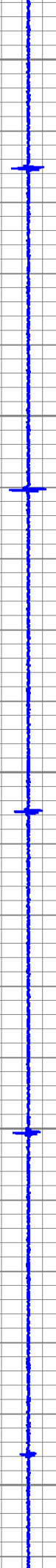
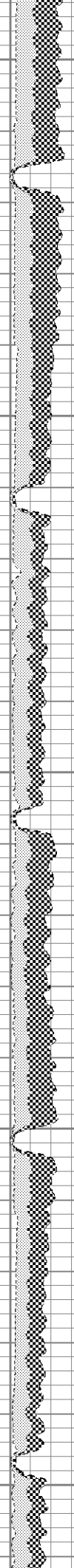
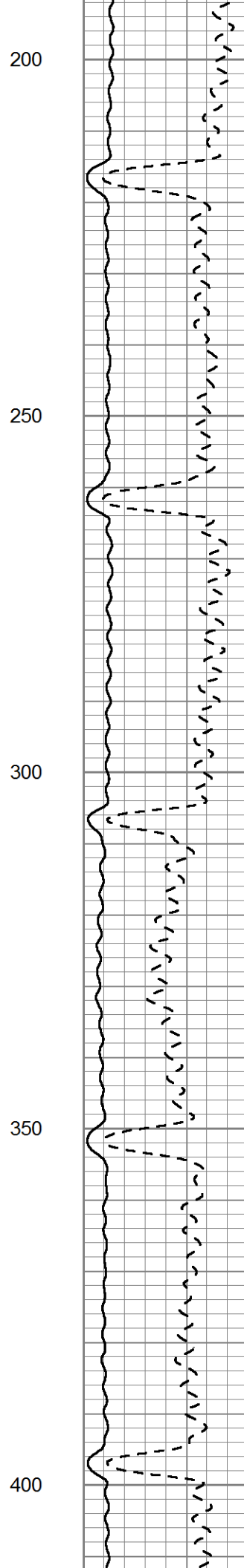
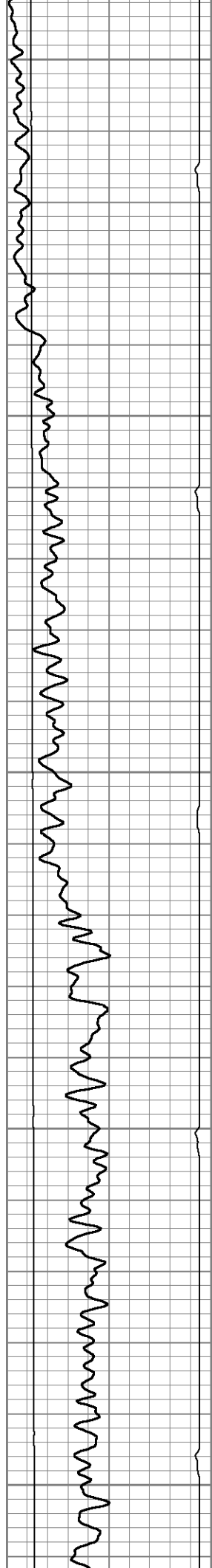
0	AMP (mV)	100	0	AMPAVG	150
0	AMPx5 (mV)	20	0	AMPMAX	150

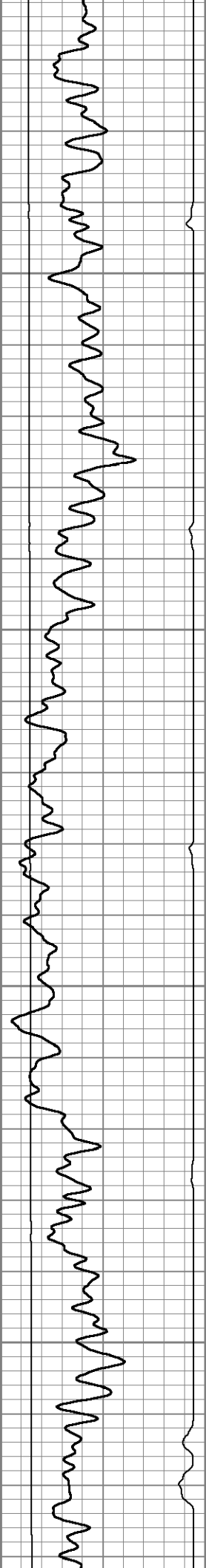
0	AMPMIN	150			

4	CCL	-0.8			

200	VDL	1200	1	Cement Map	8
				25	75





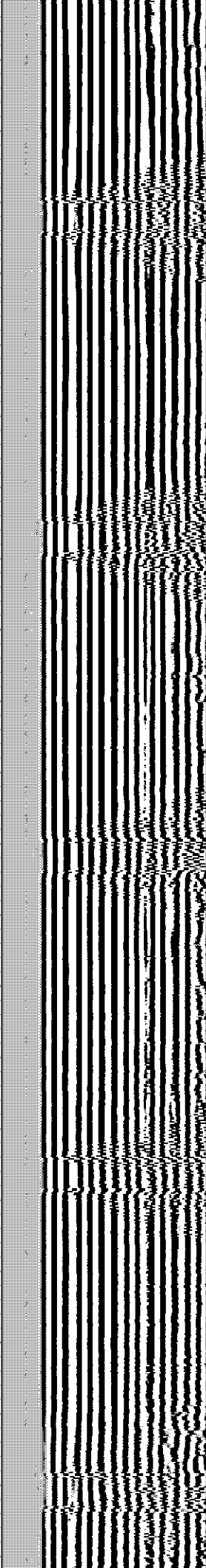
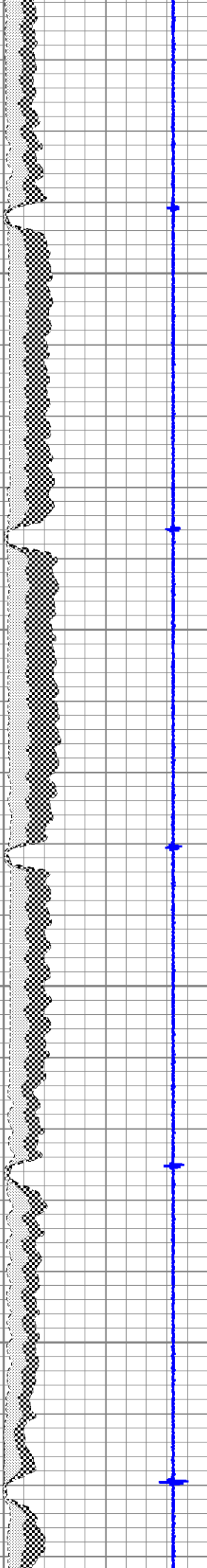
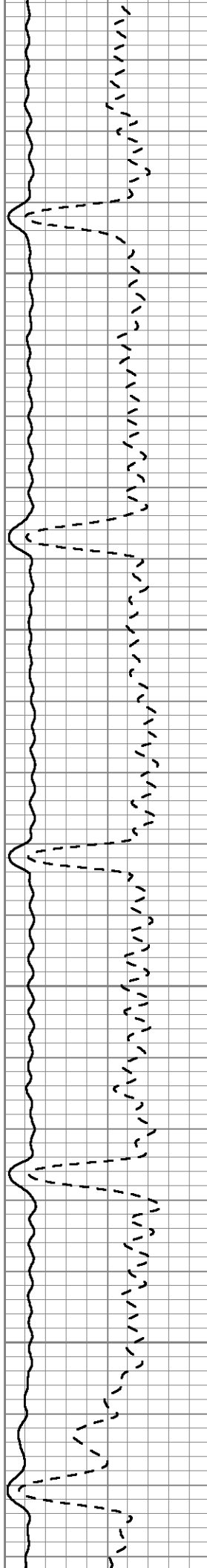


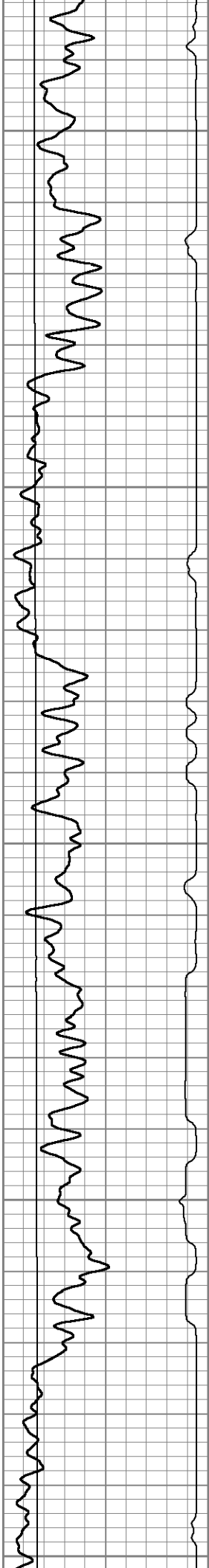
450

500

550

600





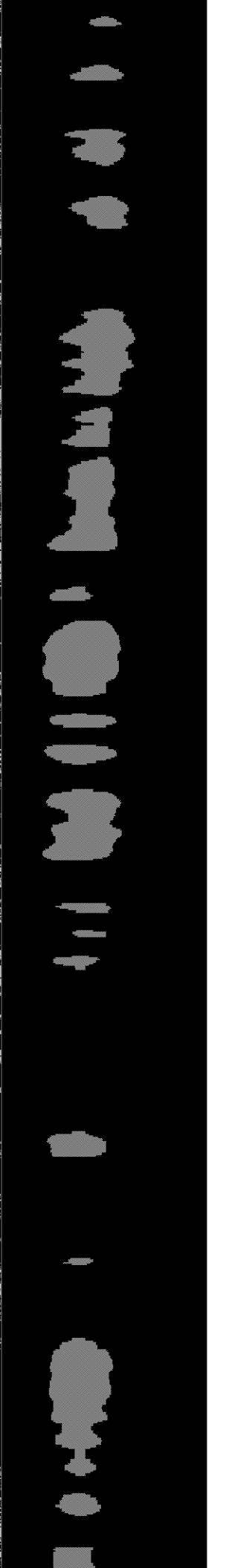
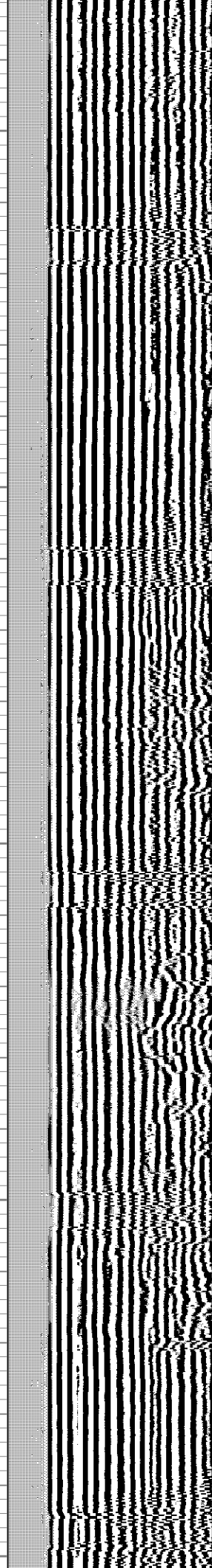
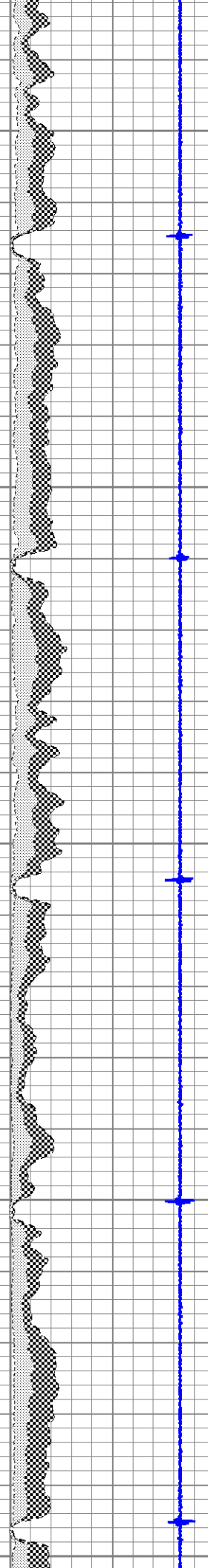
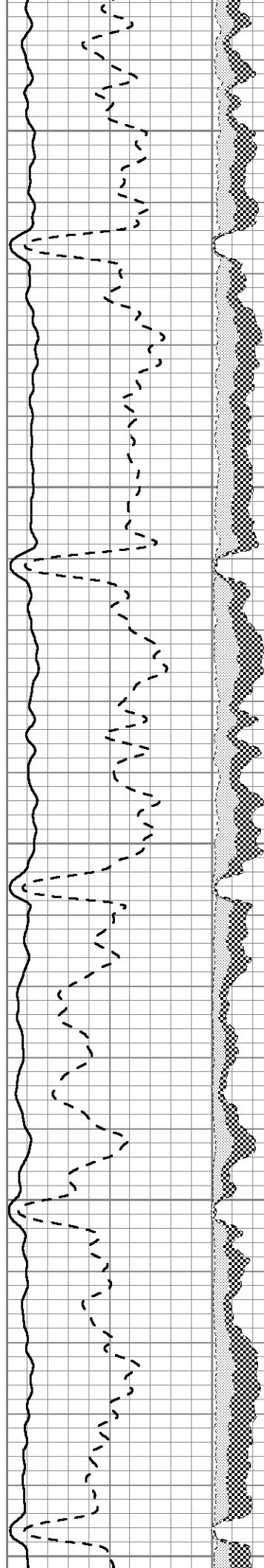
650

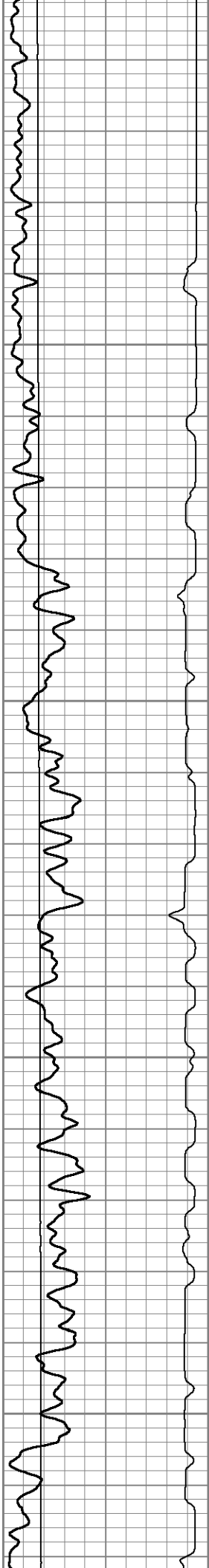
700

750

800

850



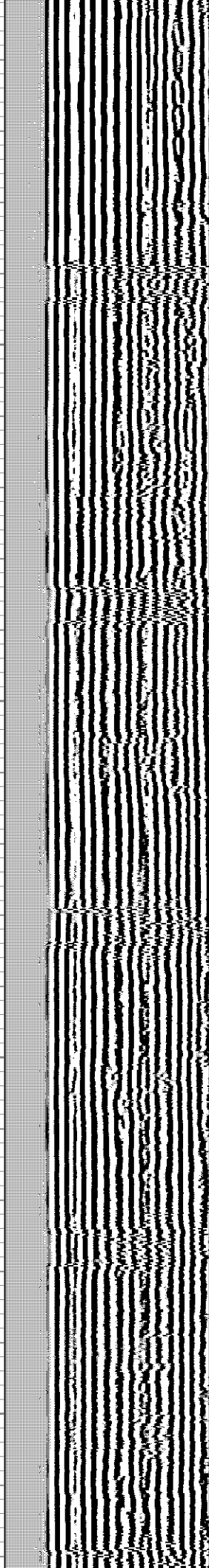
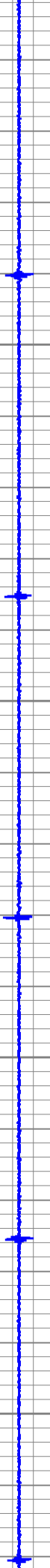
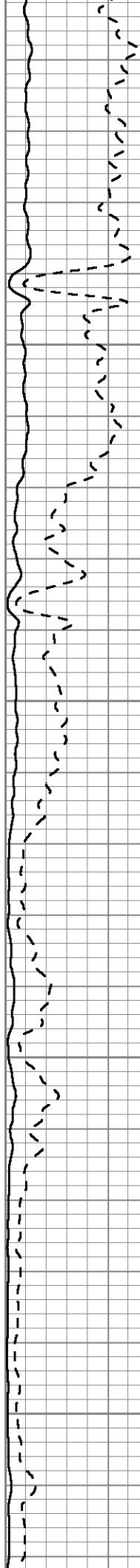


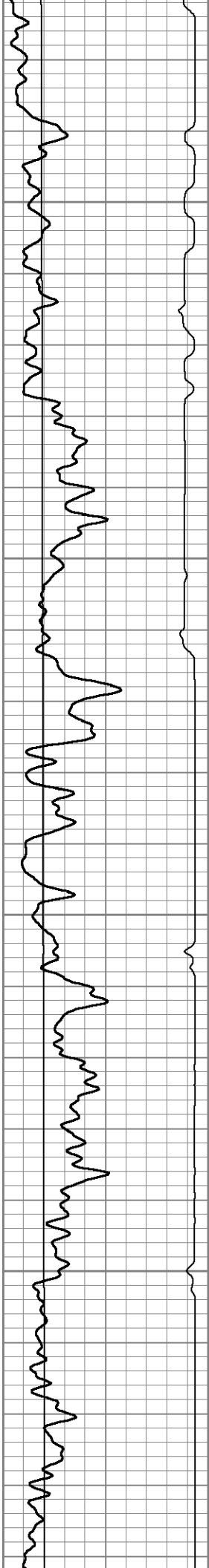
900

950

1000

1050



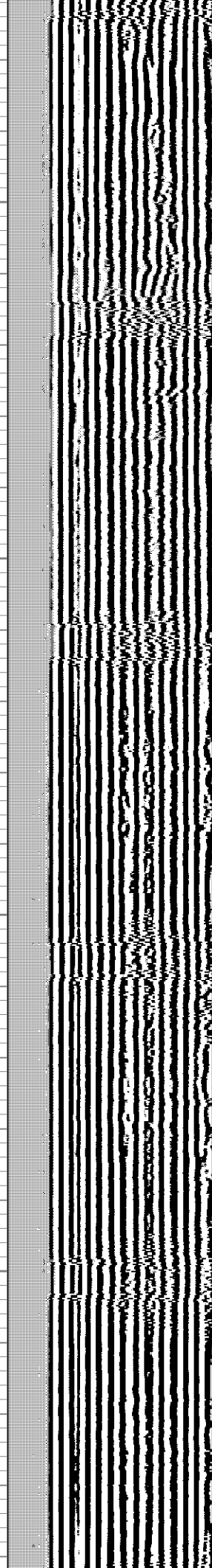
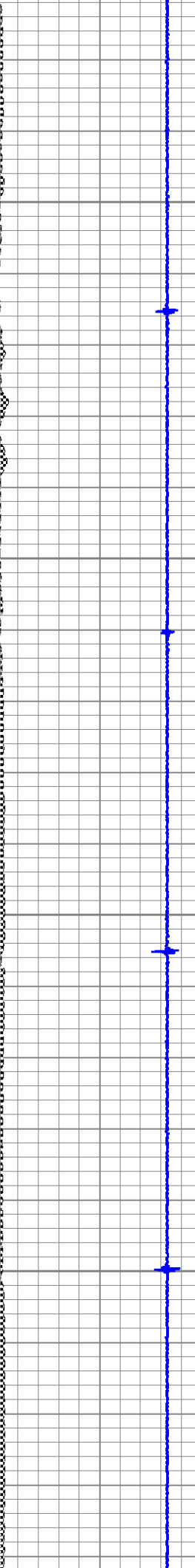
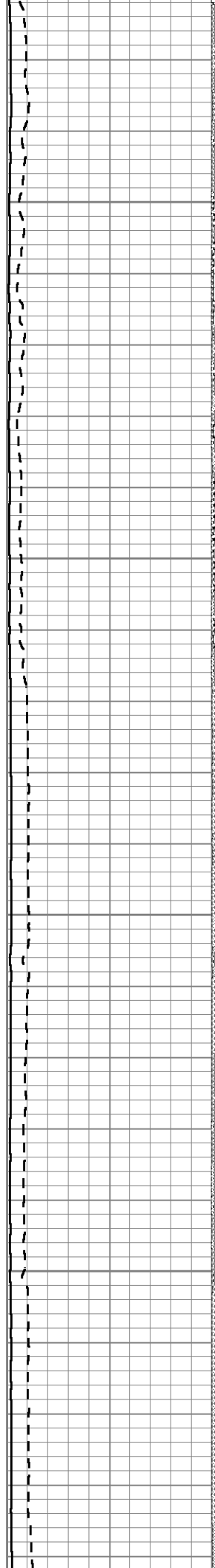


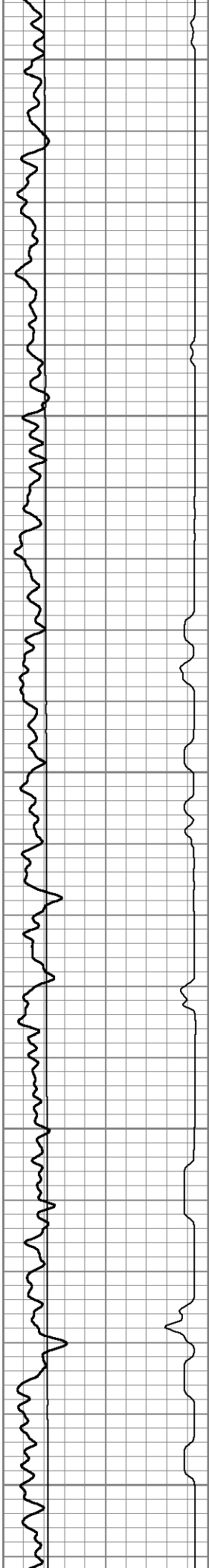
1100

1150

1200

1250





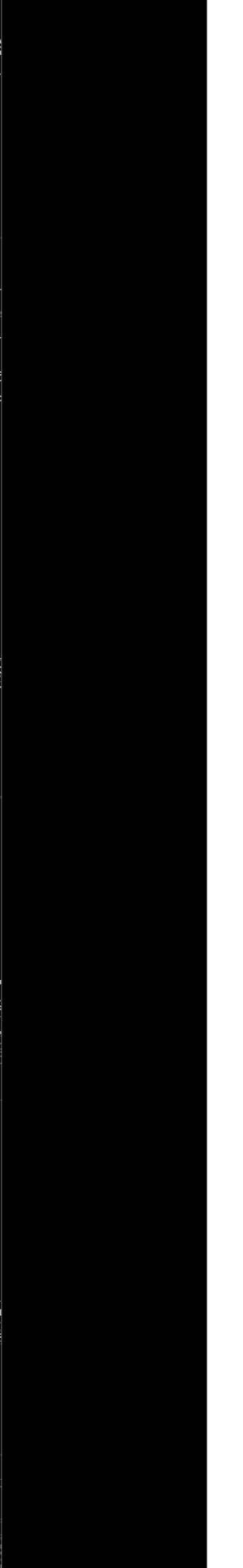
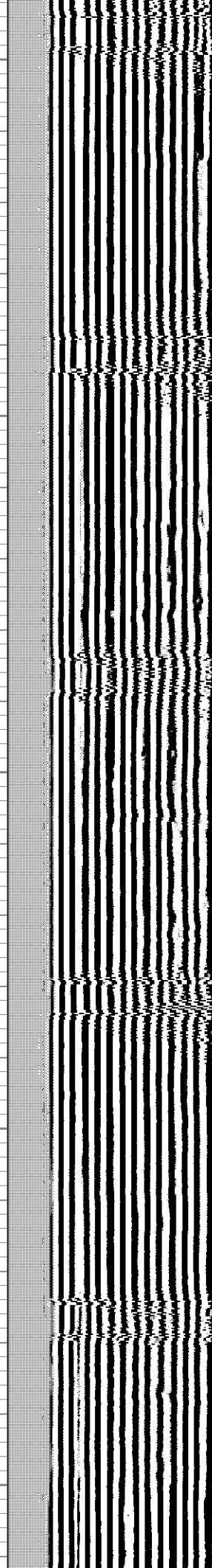
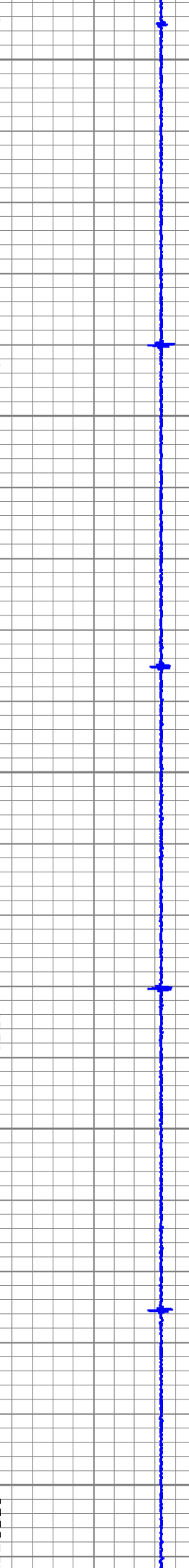
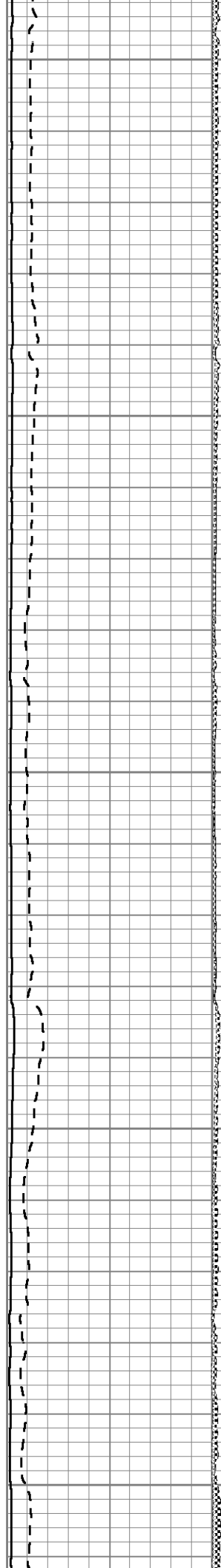
1300

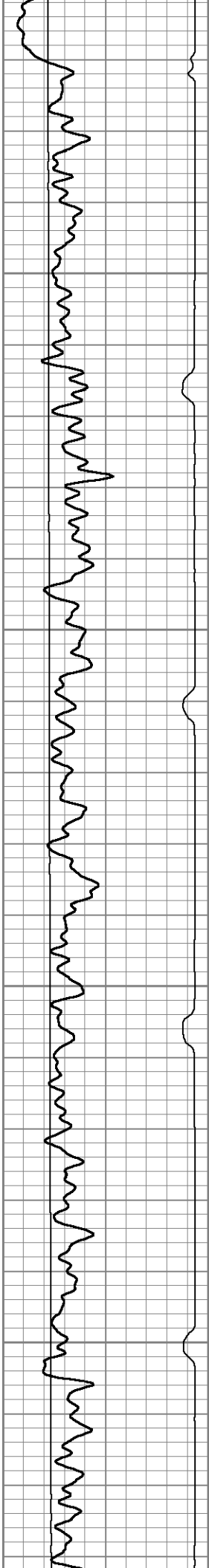
1350

1400

1450

1500



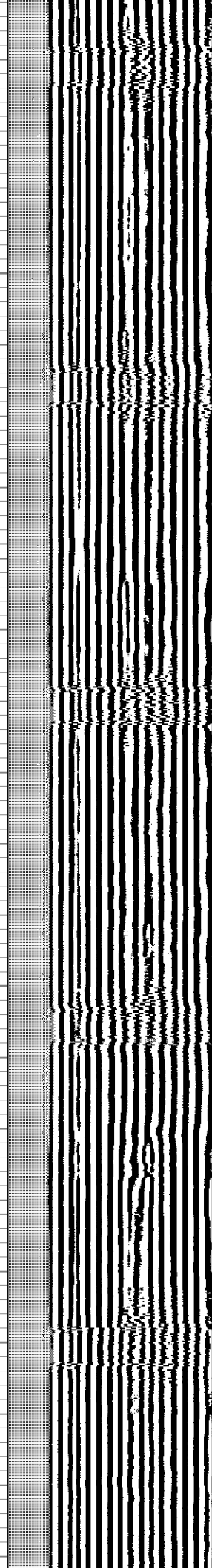
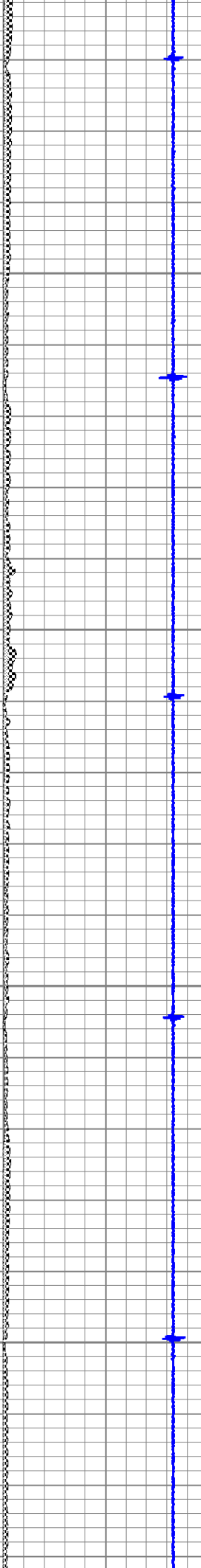
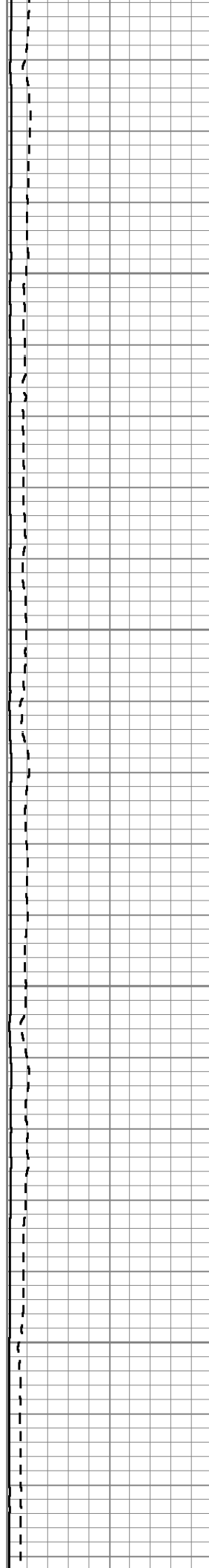


1550

1600

1650

1700





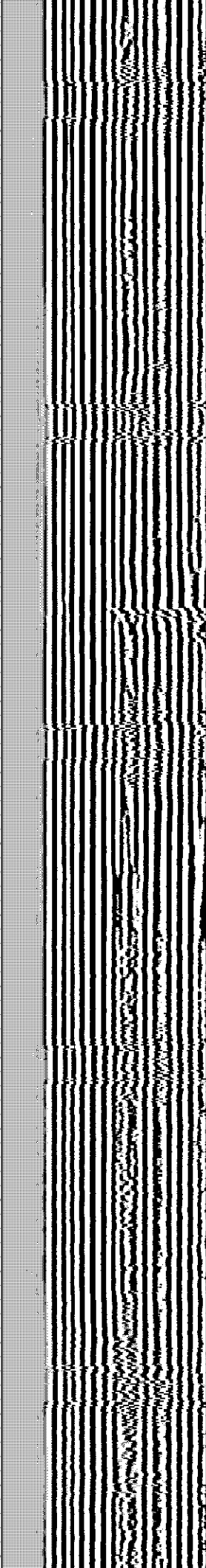
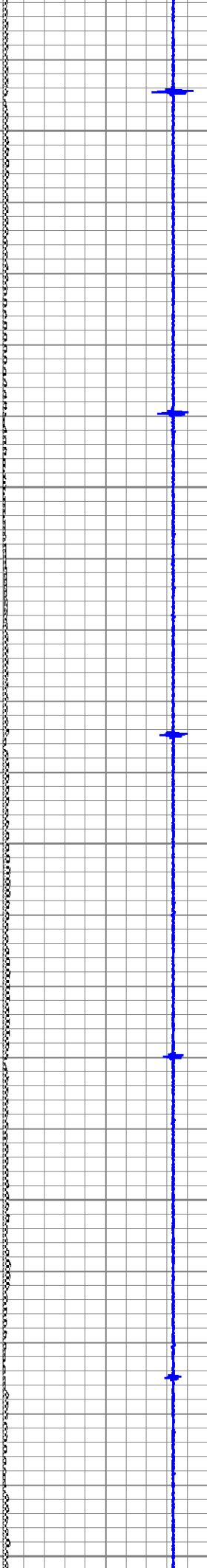
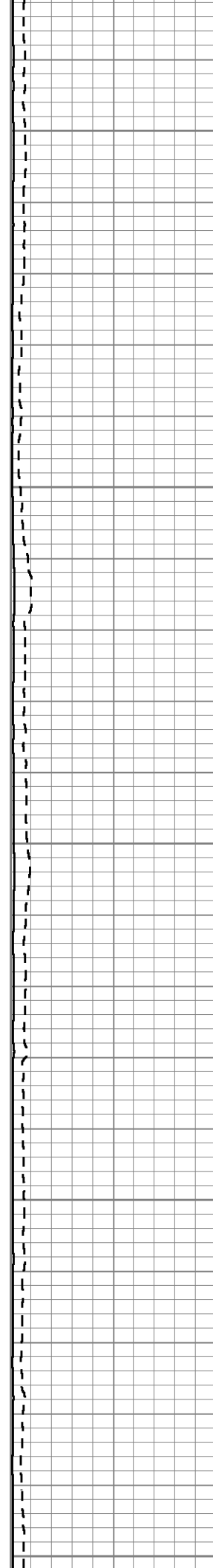
1750

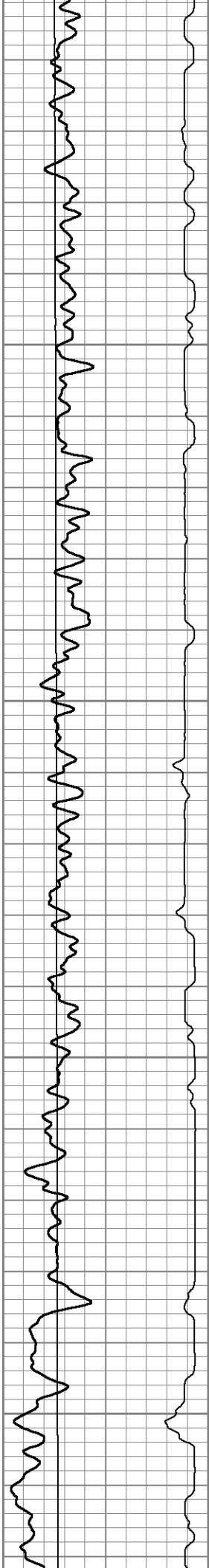
1800

1850

1900

1950



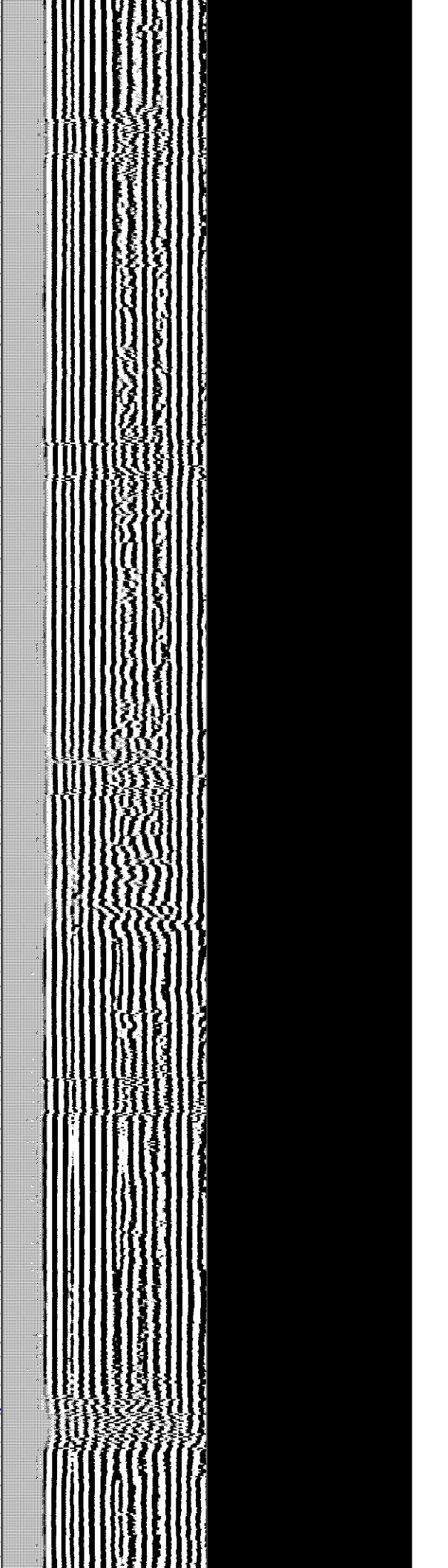
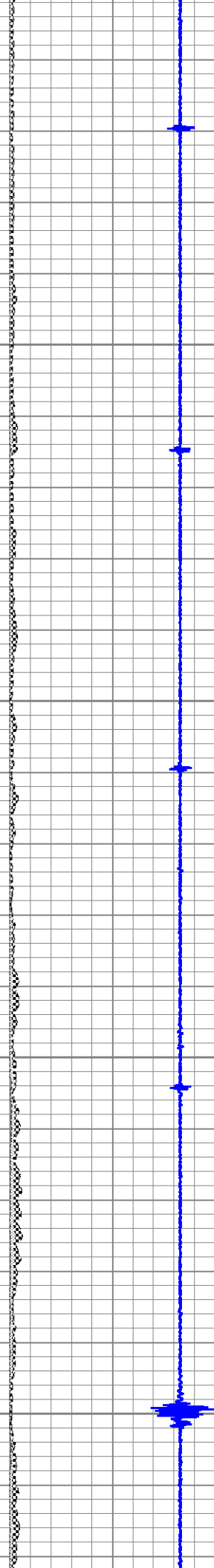
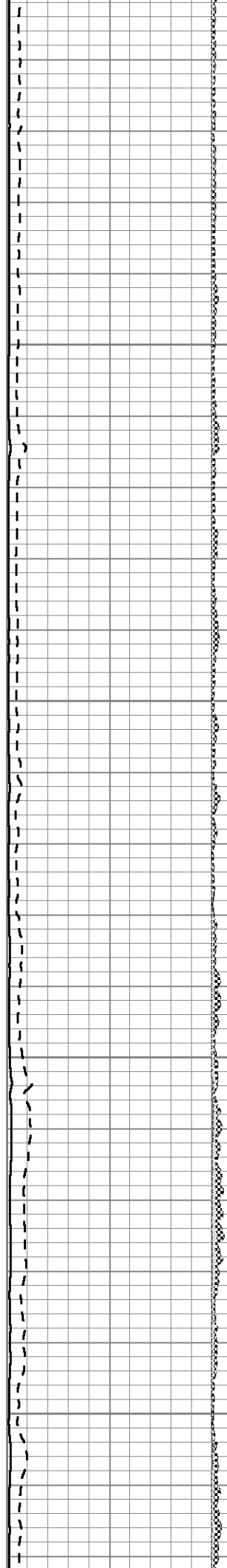


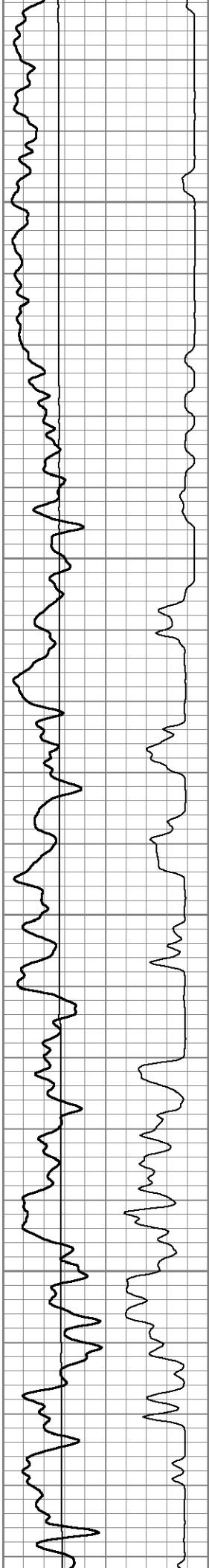
2000

2050

2100

2150



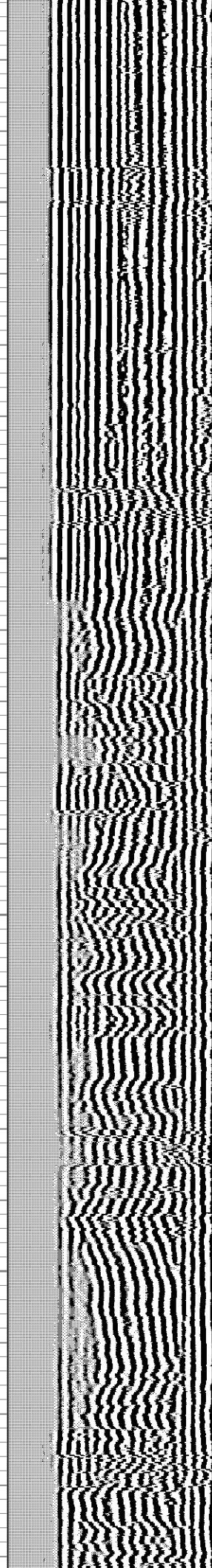
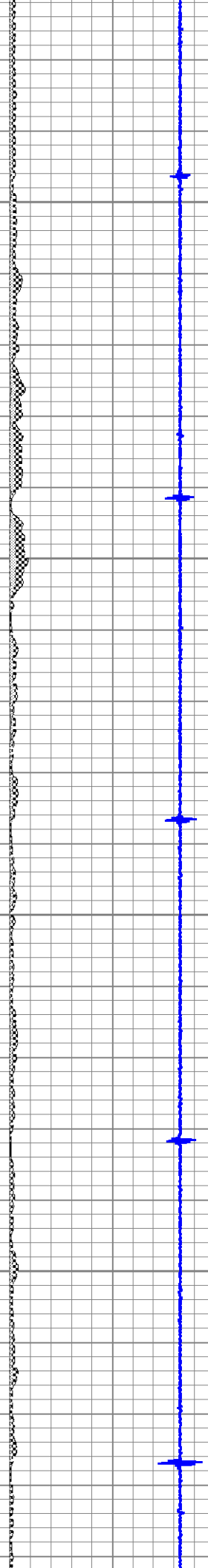
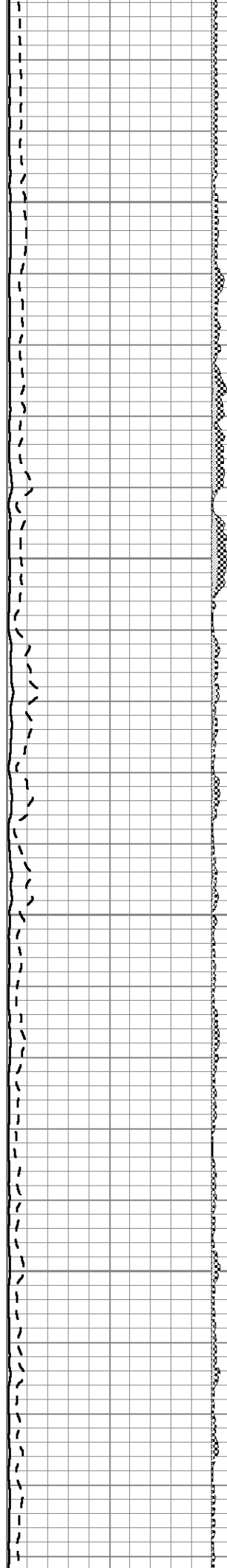


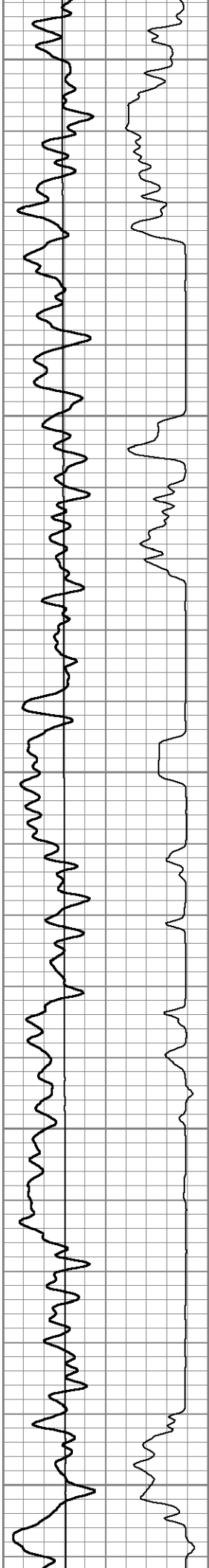
2200

2250

2300

2350





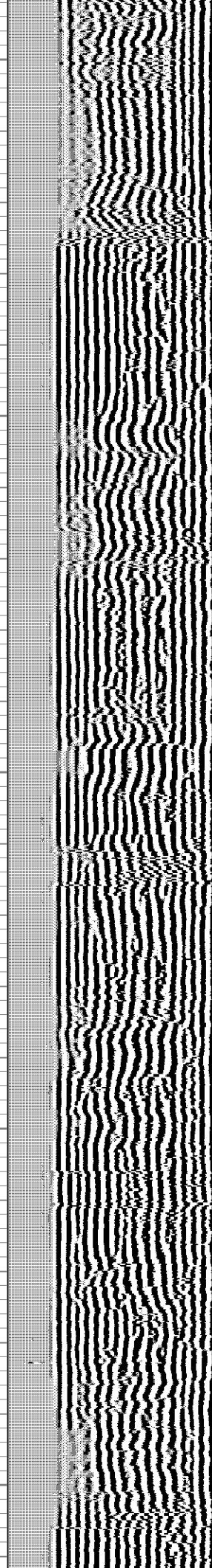
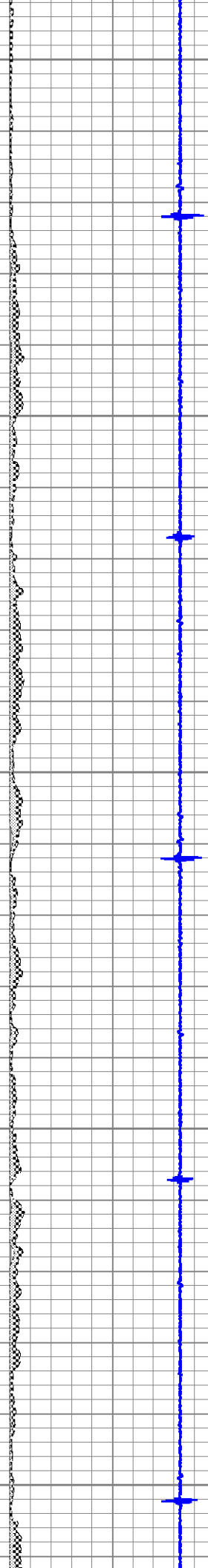
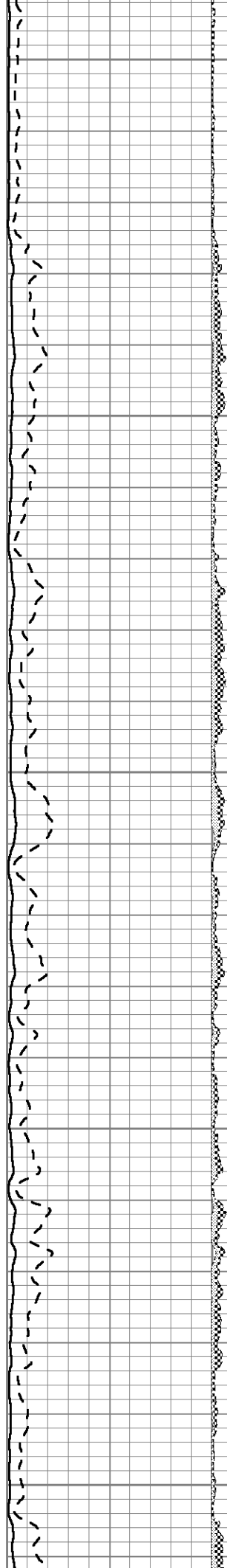
2400

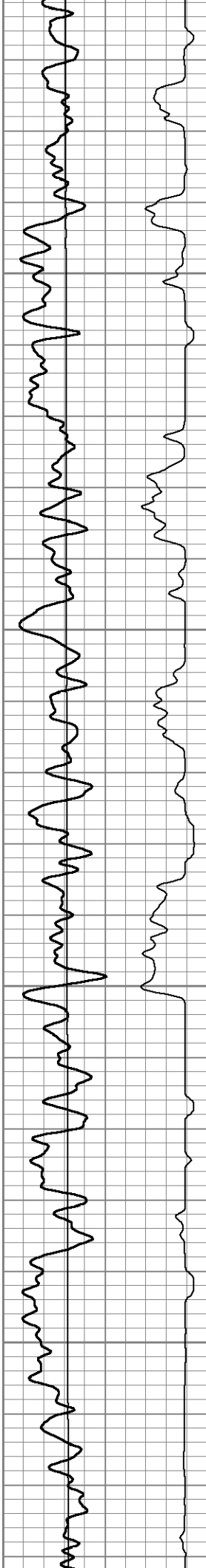
2450

2500

2550

2600



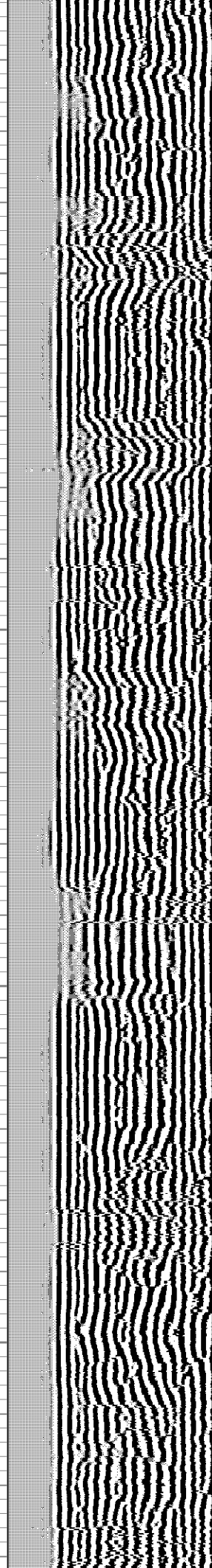
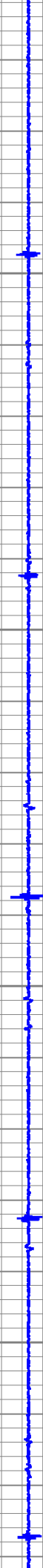
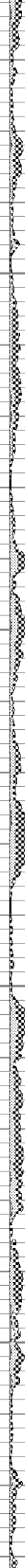
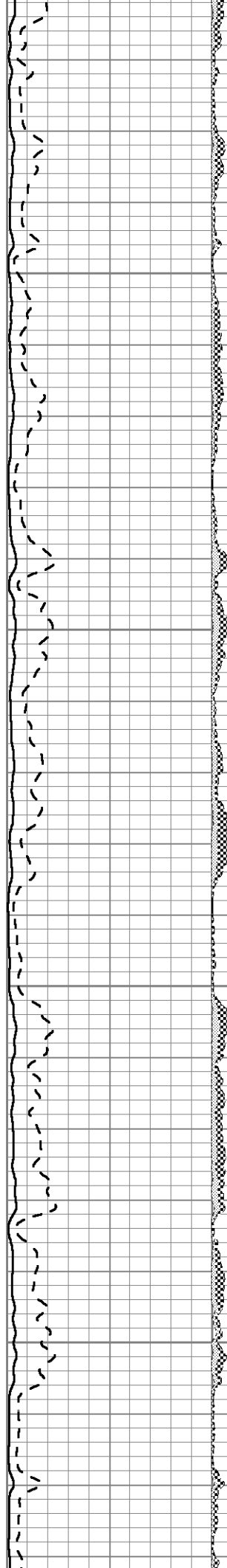


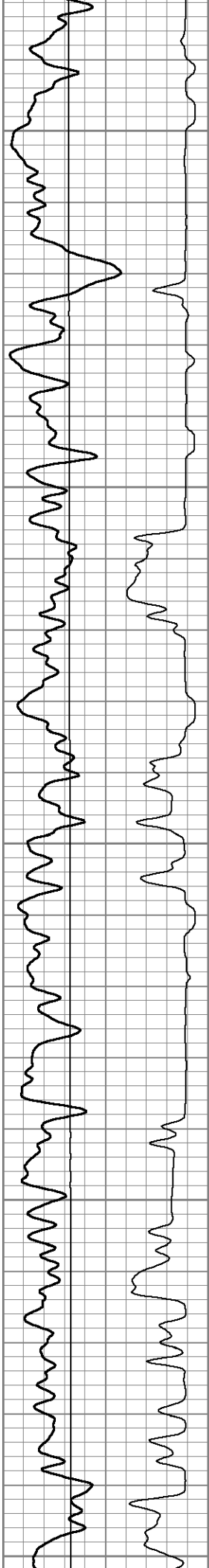
2650

2700

2750

2800





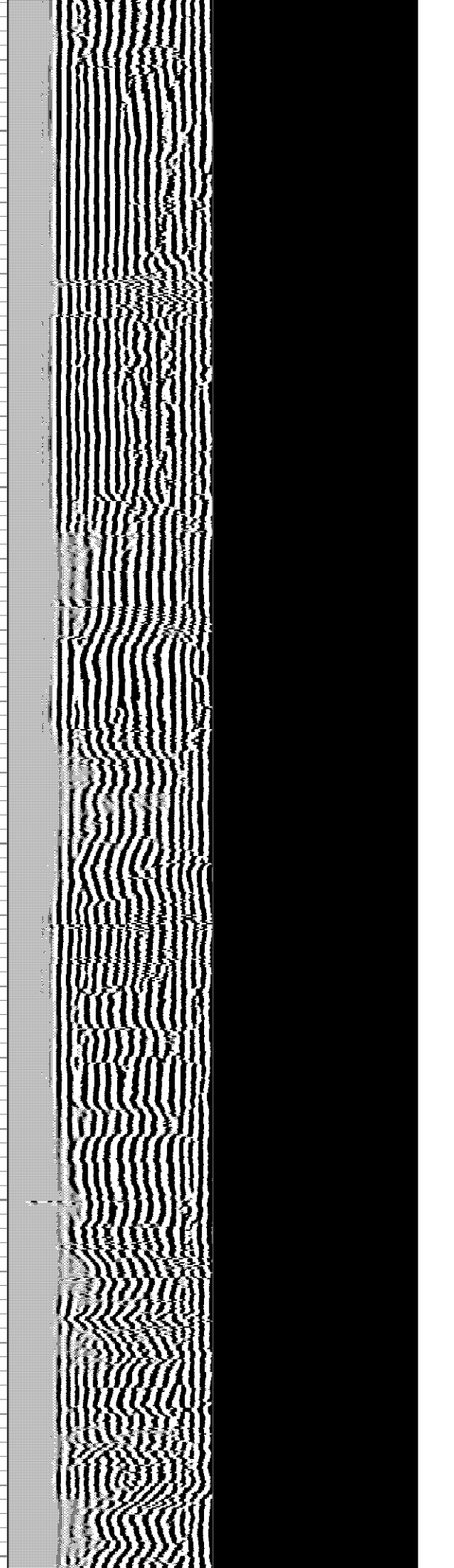
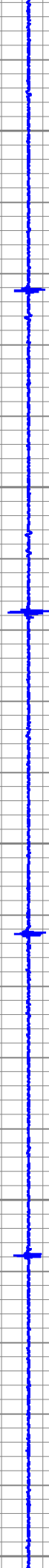
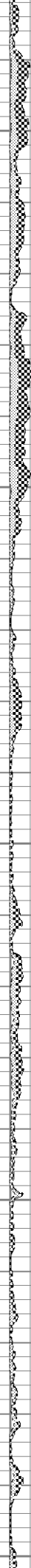
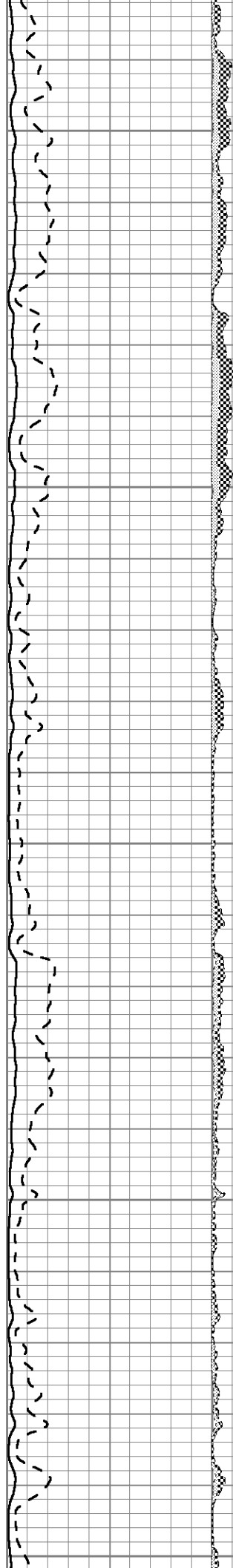
2850

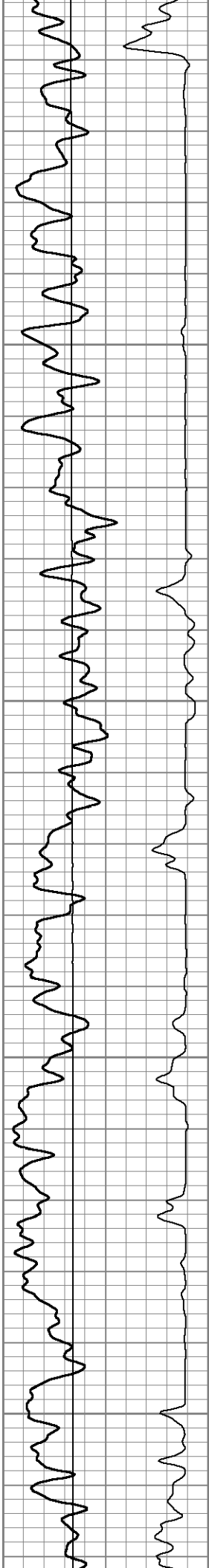
2900

2950

3000

3050



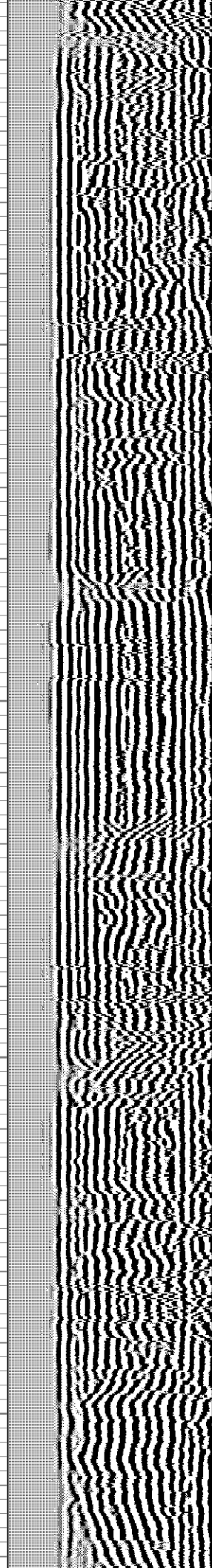
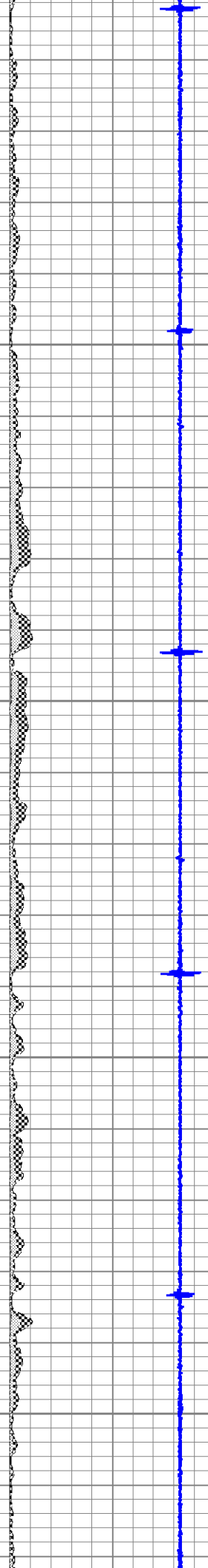
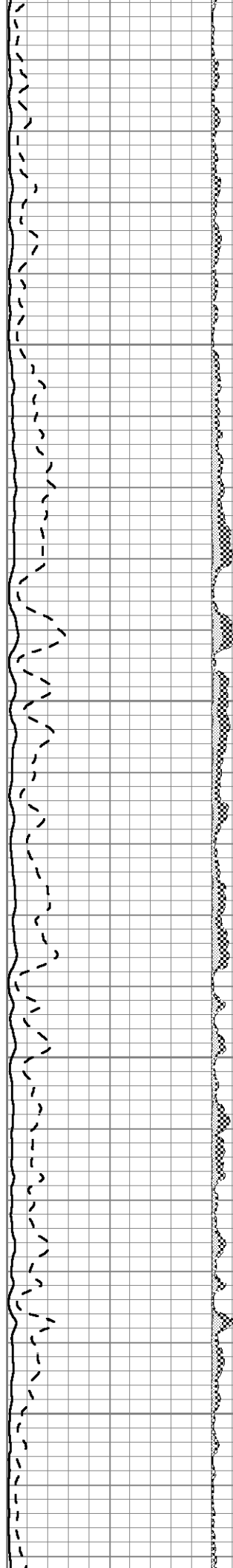


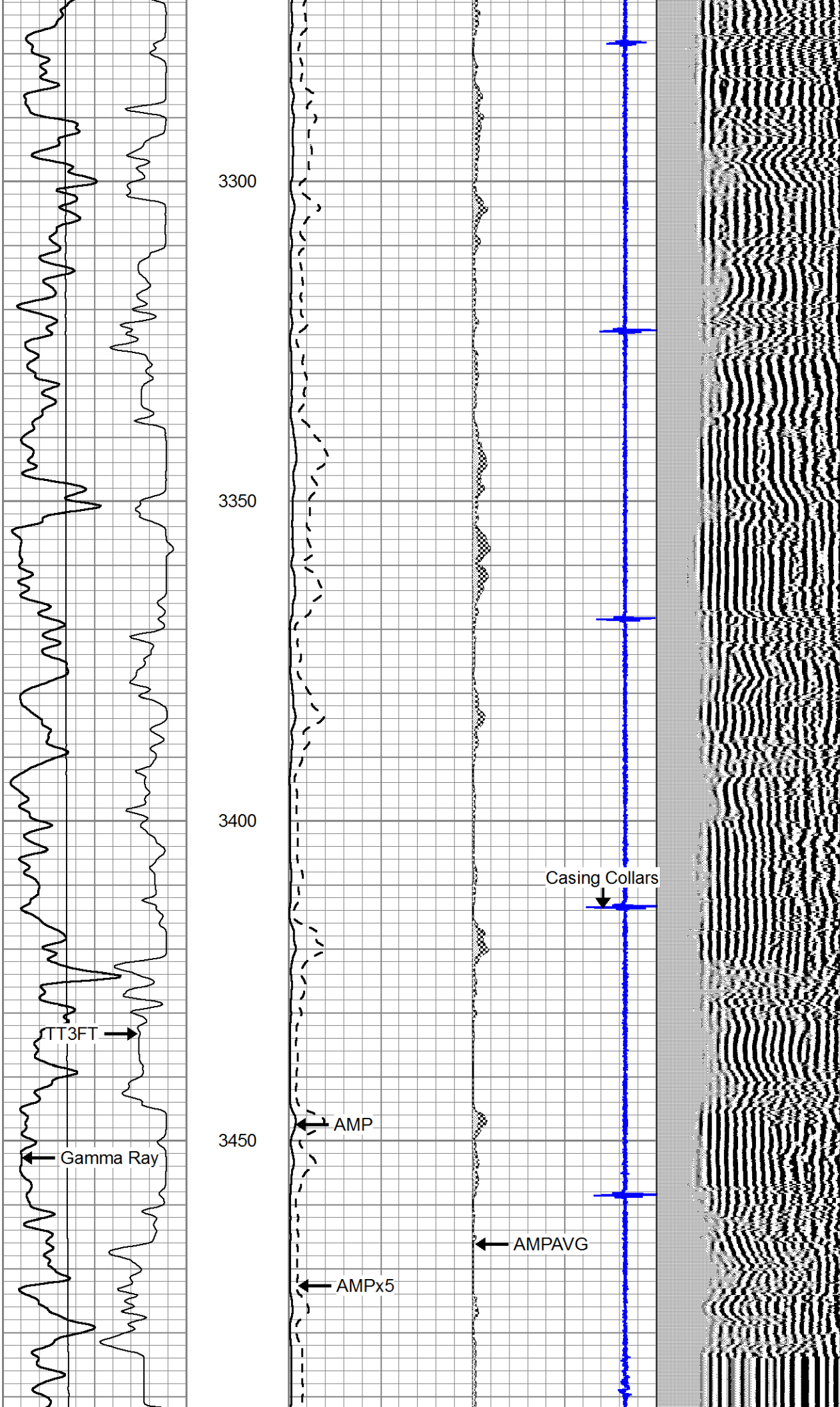
3100

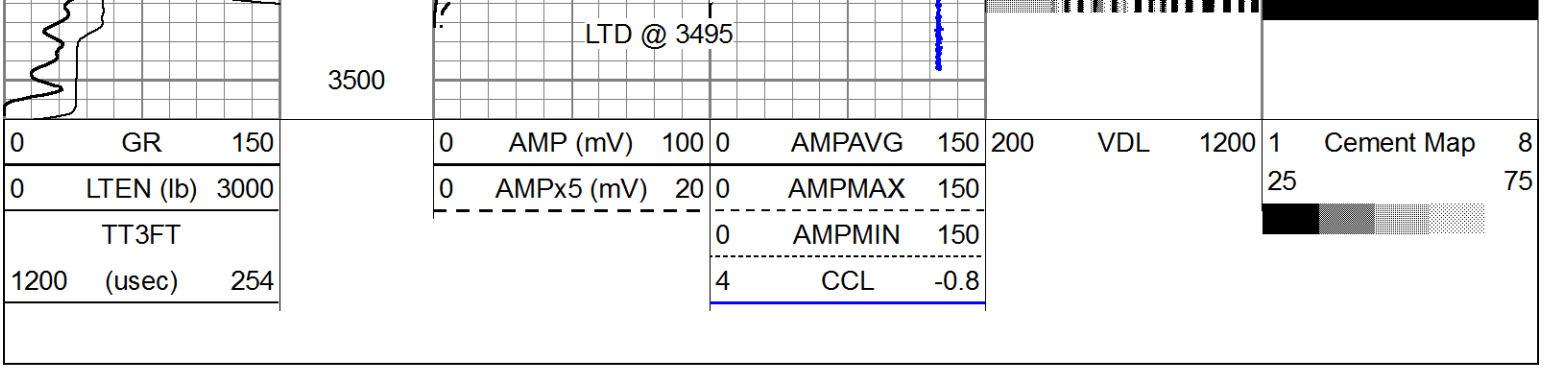
3150

3200

3250

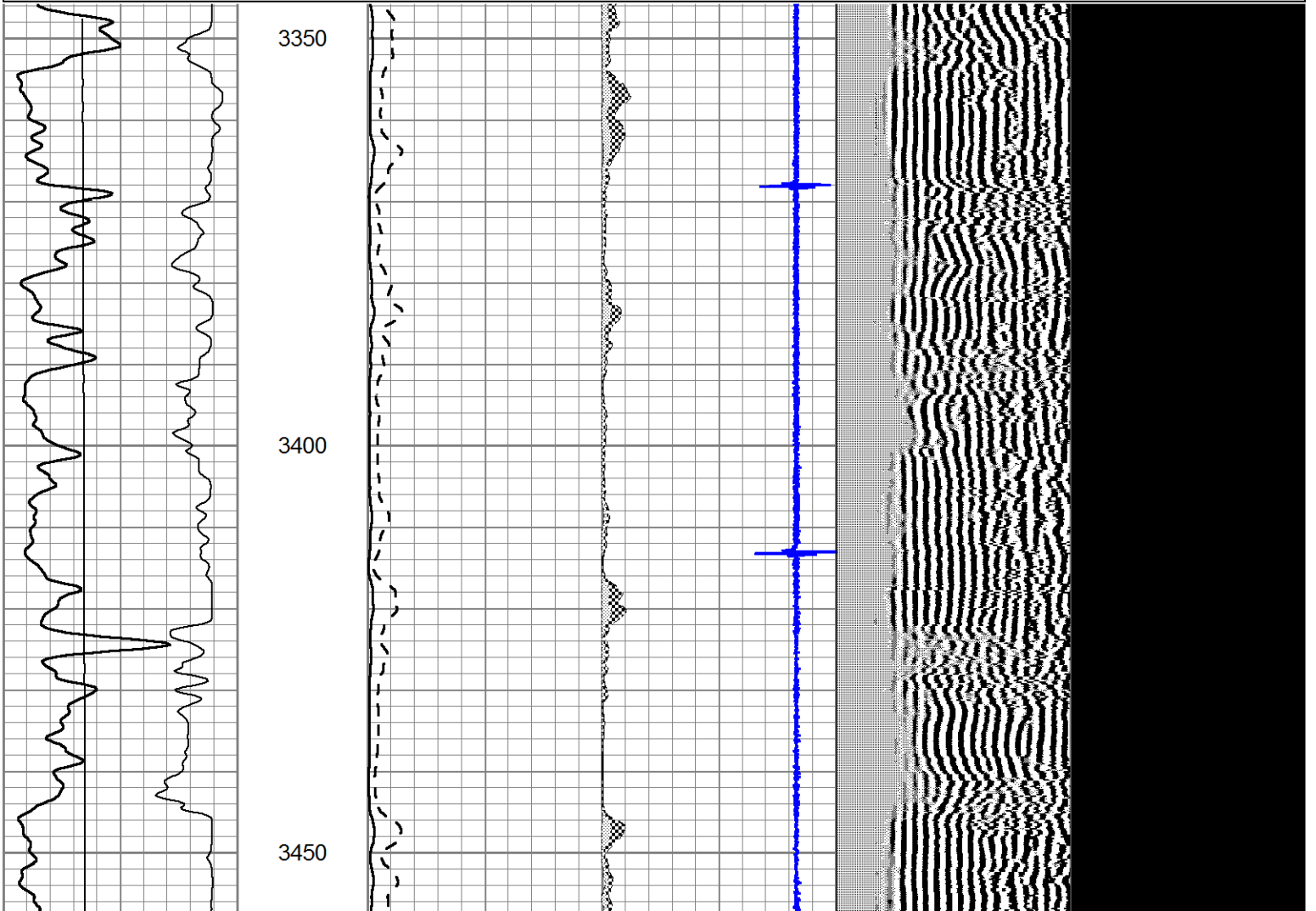
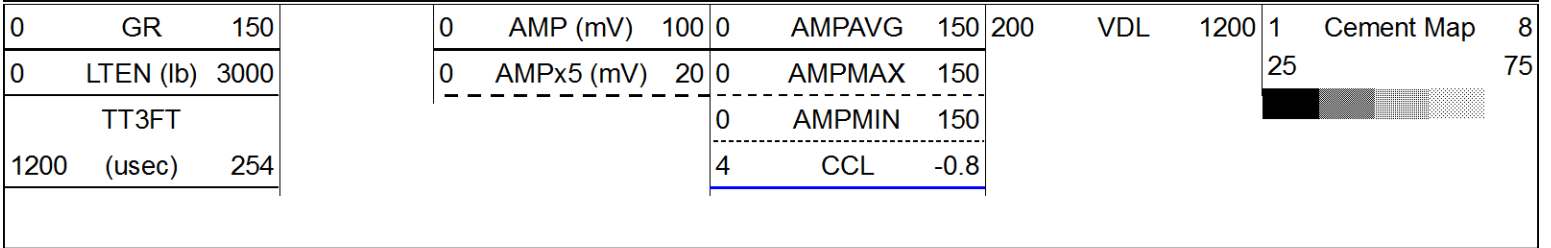


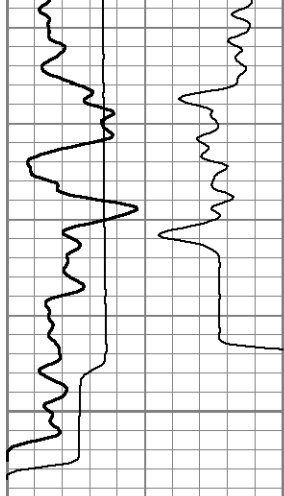




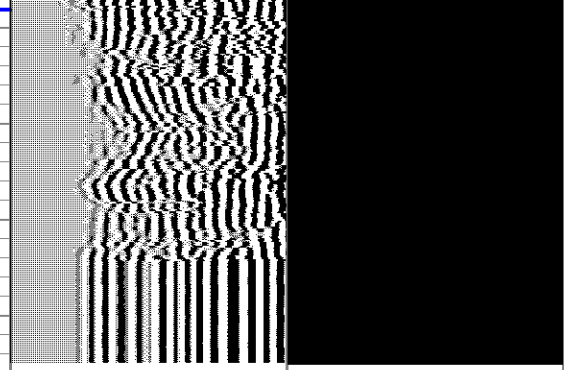
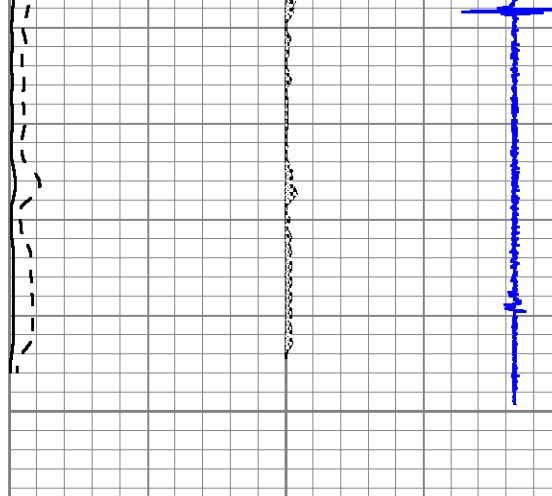
Repeat Section

Database File: mcelvain_faulkner_#5 h3.db
 Dataset Pathname: sgrcbl/pass3
 Presentation Format: scbl02
 Dataset Creation: Wed Mar 25 08:49:08 2015 by Log SCH 111116
 Charted by: Depth in Feet scaled 1:240





3500



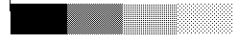
0	GR	150
0	LTEN (lb)	3000
TT3FT		
1200	(usec)	254

0	AMP (mV)	100
0	AMPx5 (mV)	20

0	AMPAVG	150
0	AMPMAX	150
0	AMPMIN	150
4	CCL	-0.8

200	VDL	1200
-----	-----	------

1	Cement Map	8
25		75



Conservation Division
District Office No. 4
2301 E. 13th Street
Hays, KS 67601-2651



Phone: 785-625-0550
Fax: 785-625-0564
<http://kcc.ks.gov/>

Shari Feist Albrecht, Chair
Jay Scott Emler, Commissioner
Pat Apple, Commissioner

Sam Brownback, Governor

May 22, 2015

Jim McKinney
McElvain Energy, Inc.
1050 17TH ST STE 2500
DENVER, CO 80265-2080

Re: Temporary Abandonment
API 15-195-22869-01-00
Faulkner 5 #3H
NW/4 Sec.05-11S-22W
Trego County, Kansas

Dear Jim McKinney:

"Your temporary abandonment (TA) application for the well listed above has been approved. In accordance with K.A.R. 82-3-111 the TA status of this well will expire 05/22/2016.

- * If you return this well to service or plug it, please notify the District Office.
- * If you sell this well you are required to file a Transfer of Operator form, T-1.
- * If the well will remain temporarily abandoned, you must submit a new TA application, CP-111, before 05/22/2016.

You may contact me at the number above if you have questions.

Very truly yours,

RICHARD WILLIAMS"