



**TRILOBITE
TESTING, INC**

DRILL STEM TEST REPORT

Berexco LLC
2020 N. Bramblewood
Wichita, KS, 67206
ATTN: Bryan Bynog

23-1S-36W / Rawlins KS

SDMS # 1-23

Job Ticket: 60808

DST#: 2

Test Start: 2015.02.04 @ 22:10:00

GENERAL INFORMATION:

Formation: **LKC "B"**
 Deviated: No Whipstock: ft (KB)
 Time Tool Opened: 01:08:00
 Time Test Ended: 09:02:00
 Interval: **4260.00 ft (KB) To 4340.00 ft (KB) (TVD)**
 Total Depth: 4340.00 ft (KB) (TVD)
 Hole Diameter: 7.88 inches Hole Condition: Fair
 Test Type: Conventional Bottom Hole (Initial)
 Tester: Robert Zodrow
 Unit No: 66
 Reference Elevations: 3313.00 ft (KB)
 3302.00 ft (CF)
 KB to GR/CF: 11.00 ft

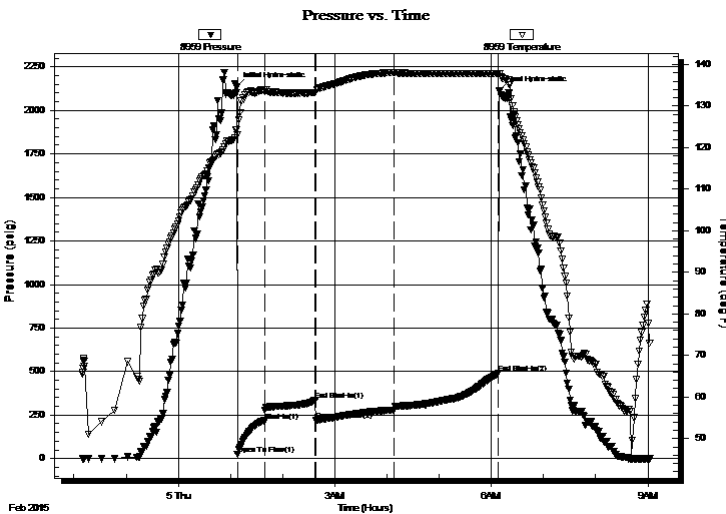
Serial #: 8959

Inside

Press@RunDepth: 279.30 psig @ 4261.00 ft (KB) Capacity: 8000.00 psig
 Start Date: 2015.02.04 End Date: 2015.02.05 Last Calib.: 2015.02.05
 Start Time: 22:10:05 End Time: 09:02:00 Time On Btm: 2015.02.05 @ 01:07:30
 Time Off Btm: 2015.02.05 @ 06:09:30

TEST COMMENT: 30-IF- Bob in 15 mins
 60-ISI- No return
 90-FF- Bob in 45 mins
 120-FSI- No return

PRESSURE SUMMARY



Time (Min.)	Pressure (psig)	Temp (deg F)	Annotation
0	2134.25	124.37	Initial Hydro-static
1	25.72	123.05	Open To Flow (1)
32	216.62	133.94	Shut-In(1)
90	336.84	133.22	End Shut-In(1)
91	218.40	133.19	Open To Flow (2)
181	279.30	138.10	Shut-In(2)
301	490.67	137.85	End Shut-In(2)
302	2112.47	137.84	Final Hydro-static

Recovery

Length (ft)	Description	Volume (bbl)
120.00	OCMW 2%O 12%M 86%W	0.59
240.00	OCWM 3%O 17%W 80%M	1.18
180.00	OCM 10%O 90%M	2.21
30.00	MCO 40%M 60%O	0.44

Gas Rates

	Choke (inches)	Pressure (psig)	Gas Rate (Mcf/d)



**TRILOBITE
TESTING, INC**

DRILL STEM TEST REPORT

FLUID SUMMARY

Berexco LLC

23-1S-36W / Rawlins KS

2020 N. Bramblewood
Wichita, KS, 67206

SDMS # 1-23

Job Ticket: 60808

DST#: 2

ATTN: Bryan Bynog

Test Start: 2015.02.04 @ 22:10:00

Mud and Cushion Information

Mud Type: Gel Chem

Cushion Type:

Oil API:

deg API

Mud Weight: 9.00 lb/gal

Cushion Length:

ft

Water Salinity:

38000 ppm

Viscosity: 60.00 sec/qt

Cushion Volume:

bbbl

Water Loss: 6.00 in³

Gas Cushion Type:

Resistivity: ohm.m

Gas Cushion Pressure:

psig

Salinity: 700.00 ppm

Filter Cake: 2.00 inches

Recovery Information

Recovery Table

Length ft	Description	Volume bbbl
120.00	OCMW 2%O 12%M 86%W	0.590
240.00	OCWM 3%O 17%W 80%M	1.180
180.00	OCM 10%O 90%M	2.205
30.00	MCO 40%M 60%O	0.439

Total Length: 570.00 ft Total Volume: 4.414 bbl

Num Fluid Samples: 0

Num Gas Bombs: 0

Serial #:

Laboratory Name:

Laboratory Location:

Recovery Comments: RW .286 @ 49 Deg F = 38000

Pressure vs. Time

