



**TRILOBITE TESTING, INC.**

# DRILL STEM TEST REPORT

Culbreath Oil & Gas

**11-5S-35W - Rawlins**

1532 S. Peoria Ave.  
Tulsa Ok, 74120

**Dewey #1-11C**

Job Ticket: 62357

**DST#: 1**

ATTN: Anthony Luna

Test Start: 2015.03.25 @ 19:46:00

## GENERAL INFORMATION:

Formation: **LKC - 'B'**

Deviated: No Whipstock: ft (KB)

Time Tool Opened: 22:05:45

Time Test Ended: 02:19:45

Test Type: Conventional Bottom Hole (Initial)

Tester: Royal Fisher

Unit No: 54

**Interval: 4172.00 ft (KB) To 4190.00 ft (KB) (TVD)**

Reference Elevations: 3257.00 ft (KB)

Total Depth: 4190.00 ft (KB) (TVD)

3252.00 ft (CF)

Hole Diameter: 7.88 inches Hole Condition: Good

KB to GR/CF: 5.00 ft

**Serial #: 6753**

**Inside**

Press@RunDepth: 17.44 psig @ 4173.00 ft (KB)

Capacity: 8000.00 psig

Start Date: 2015.03.25

End Date:

2015.03.26

Last Calib.:

2015.03.26

Start Time: 19:46:05

End Time:

02:19:44

Time On Btm:

2015.03.25 @ 22:05:30

Time Off Btm:

2015.03.26 @ 00:06:30

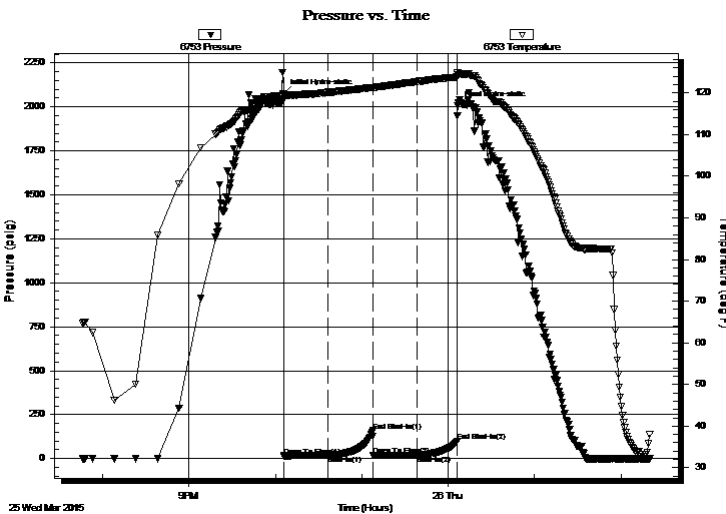
TEST COMMENT: 30 - IF - Surface blow built up to 1/2"

30 - ISI - No Return

30 - FF - No Surface blow

30 - FSI - No Return

## PRESSURE SUMMARY



Time (Min.)	Pressure (psig)	Temp (deg F)	Annotation
0	2073.20	119.65	Initial Hydro-static
1	13.36	118.31	Open To Flow (1)
31	16.89	120.15	Shut-In(1)
62	158.30	121.33	End Shut-In(1)
63	16.60	121.28	Open To Flow (2)
93	17.44	122.74	Shut-In(2)
121	97.24	123.79	End Shut-In(2)
121	2006.09	124.45	Final Hydro-static

## Recovery

Length (ft)	Description	Volume (bbl)
5.00	Mud - 100M	0.02

## Gas Rates

	Choke (inches)	Pressure (psig)	Gas Rate (Mcf/d)



**TRILOBITE  
TESTING, INC**

# DRILL STEM TEST REPORT

## FLUID SUMMARY

Culbreath Oil & Gas

**11-5S-35W - Rawlins**

1532 S. Peoria Ave.  
Tulsa Ok, 74120

**Dewey #1-11C**

Job Ticket: 62357

**DST#: 1**

ATTN: Anthony Luna

Test Start: 2015.03.25 @ 19:46:00

### Mud and Cushion Information

Mud Type: Gel Chem

Cushion Type:

Oil API:

deg API

Mud Weight: 9.00 lb/gal

Cushion Length:

ft

Water Salinity:

ppm

Viscosity: 68.00 sec/qt

Cushion Volume:

bbf

Water Loss: 6.40 in<sup>3</sup>

Gas Cushion Type:

Resistivity: 0.00 ohm.m

Gas Cushion Pressure:

psig

Salinity: 1200.00 ppm

Filter Cake: 3.50 inches

### Recovery Information

Recovery Table

Length ft	Description	Volume bbf
5.00	Mud - 100M	0.025

Total Length: 5.00 ft      Total Volume: 0.025 bbf

Num Fluid Samples: 0

Num Gas Bombs: 0

Serial #:

Laboratory Name:

Laboratory Location:

Recovery Comments:

