



# Geologic Report

Drilling Time and Sample Log

Operator <b>American Warrior, Inc.</b>		Elevation KB 2270'	
Lease <b>Shank</b>		No. <b>5-11</b>	DF GL 2262'
API # <b>15-135-25835-0000</b>			
Field <b>Highpoint</b>			
Location <b>950' FNL &amp; 1830' FWL</b>		Casing Record Surface 8 5/8" @ 220' Production 5 1/2" @ 4429'	
Electrical Surveys None			
Sec. <b>11</b>	Twp. <b>20s</b>	Rge. <b>21w</b>	
County <b>Ness</b>		State <b>Kansas</b>	

Formation	Log Tops	Sample Tops	Struct Comp
Anhydrite		1475' +795	+1
Base		1505' +765	
Heebner		3786' -1516	FL
Lansing		3831' -1561	+2
BKc		4169' -1899	
Pawnee		4296' -2026	FL
Fort Scott		4328' -2058	-4
Cherokee		4346' -2076	-3
Mississippian		4414' -2144	-10
Total Depth		4430' -2160	

Reference Well For Structural Comparison **American Warrior, Inc. Shank #1-11**  
1250' FNL & 1500' FWL Sec. 11 T20s R21w Ness Co. Kansas

Drilling Contractor	Discovery Drilling Co. Inc.	Rig #3
Commenced	1-26-2015	Completed 2-1-2015
Samples Saved From	4000'	To RTD
Drilling Time Kept From	3700'	To RTD
Samples Examined From	4000'	To RTD
Geological Supervision From	4000'	To RTD

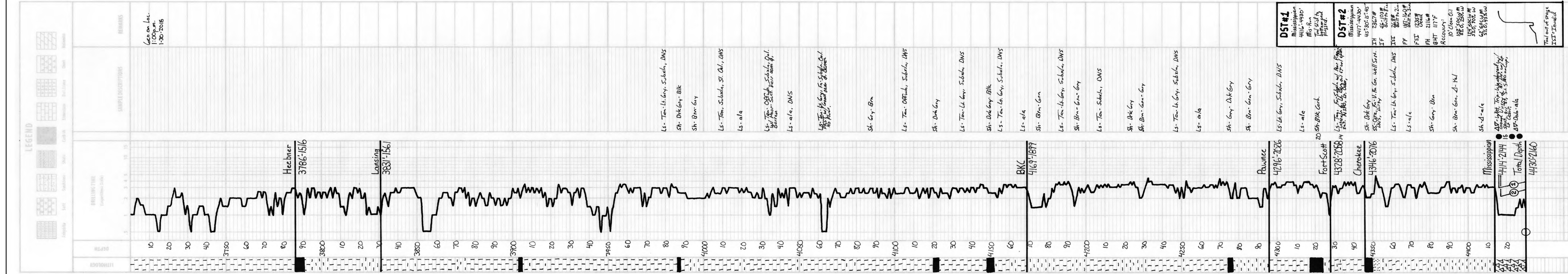
Displacement 3600' Mud Type Chemical

## Summary and Recommendations

The location for the Shank #5-11 was found via 3-D seismic survey. The new well ran structurally as expected via the survey. Two Drill Stem Tests were conducted one of which recovered commercial amounts of oil from the Mississippian Osage Formation. After all gathered data had been examined the decision was made to run 5 1/2 inch production casing to further evaluate the Shank #5-11 well.

Respectfully Submitted,

Jason T Alm  
Hard Rock Consulting, Inc.



<b>DST #1</b> Mississippian 4416'-4430' Mis. Run Top. stud by piggyback	<b>DST #2</b> Mississippian 4417'-4430' 445'-40'-15'-45" IH 2367# IF 26-03# IS 26-03# FF 187-16.0# FST 1238# FH 2116# BHT 117-F Recovery: 10' Clean Oil 18% Oil, 25% W 124,500 W M 32.0, 70% W 62,500 W M 5% Oil, 15% W
--	--

Total out of range  
ISST-Invalid  
Respectfully,  
Jason T Alm  
2-3-2015