

OPERATOR

Company: Younger Energy Company
 Address: 9415 E. Harry
 Suite 403, Bldg. 400
 Wichita, KS 67207

Contact Geologist:
 Contact Phone Nbr: 316-681-2542
 Well Name: Bauer "Y" #2-27
 Location: SEC.27 - T21S - R15W
 API: 15-145-21797-00-00
 Pool:
 State: Kansas

Field: Hurray North
 Country: USA



Scale 1:240 Imperial

Well Name: Bauer "Y" #2-27
 Surface Location: SEC.27 - T21S - R15W
 Bottom Location:
 API: 15-145-21797-00-00
 License Number: 30705
 Spud Date: 1/19/2015 Time: 6:00 PM
 Region: Pawnee
 Drilling Completed: 1/27/2015 Time: 8:00 AM
 Surface Coordinates: 330' FSL & 1063' FEL
 Bottom Hole Coordinates:
 Ground Elevation: 1957.00ft
 K.B. Elevation: 1965.00ft
 Logged Interval: 3200.00ft To: 4110.00ft
 Total Depth: 4110.00ft
 Formation: Viola, Simpson, Arbuckle
 Drilling Fluid Type: Chemical/Fresh Water Gel

SURFACE CO-ORDINATES

Well Type: Vertical
 Longitude:
 Latitude:
 N/S Co-ord: 330' FSL
 E/W Co-ord: 1063' FEL

LOGGED BY

Keith Reavis
Consulting Geologist

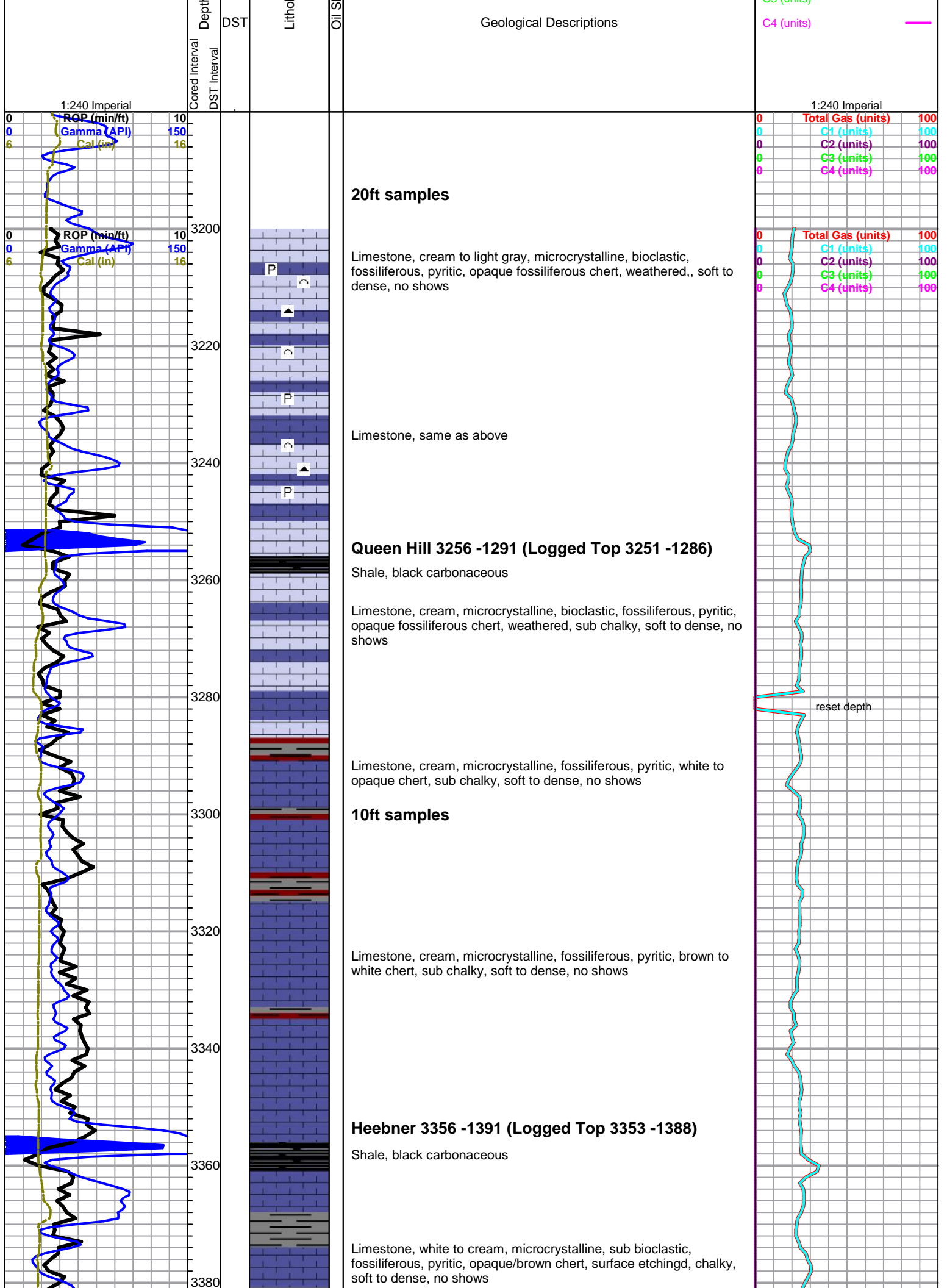
Company: Keith Reavis, Inc.
 Address: 3420 22nd Street
 Great Bend, KS 67530

Phone Nbr: 620-617-4091
 Logged By: Logan Walker

Name: Logan Walker

CONTRACTOR

Contractor: Duke Drilling Company
 Rig #: 2
 Rig Type: mud rotary
 Spud Date: 1/19/2015 Time: 6:00 PM
 TD Date: 1/27/2015 Time: 8:00 AM
 Rig Release: Time:



Douglas 3988 -1423 (Logged Top 3386-1421)

Shale, gray to pale green to red, silty, gray wash

Shale, gray wash, silty, gummy

Brown Lime 3463 -1498 (Logged Top 3461 -1496)

Limestone, tan to brown, cryptocrystalline, dense fossiliferous, no shows

Lansing 3476 -1511 (Logged Top 3470 -1505)

Limestone, white to cream, microcrystalline, fossiliferous, pyritic, white chert, soft to dense, surface etching, poor visible porosity spotty free oil in tray, spotty bleeding free oil, free oil on break, gassy, poor cut, poor fluorescence, tight, no odor

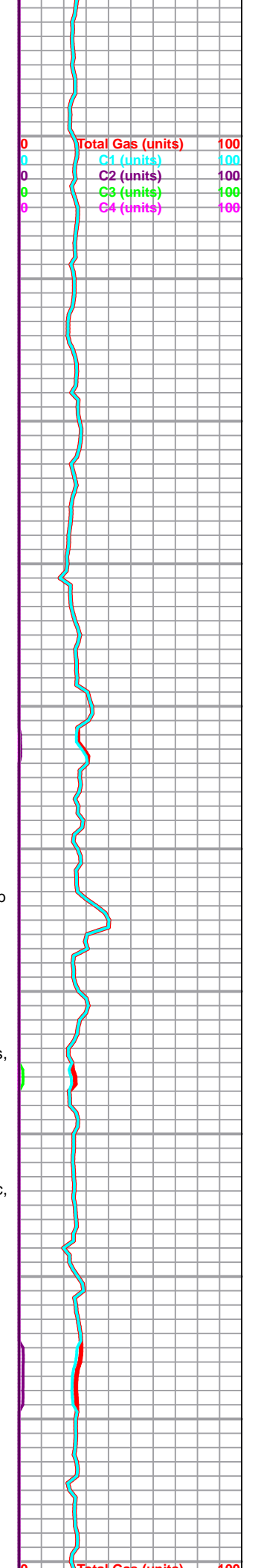
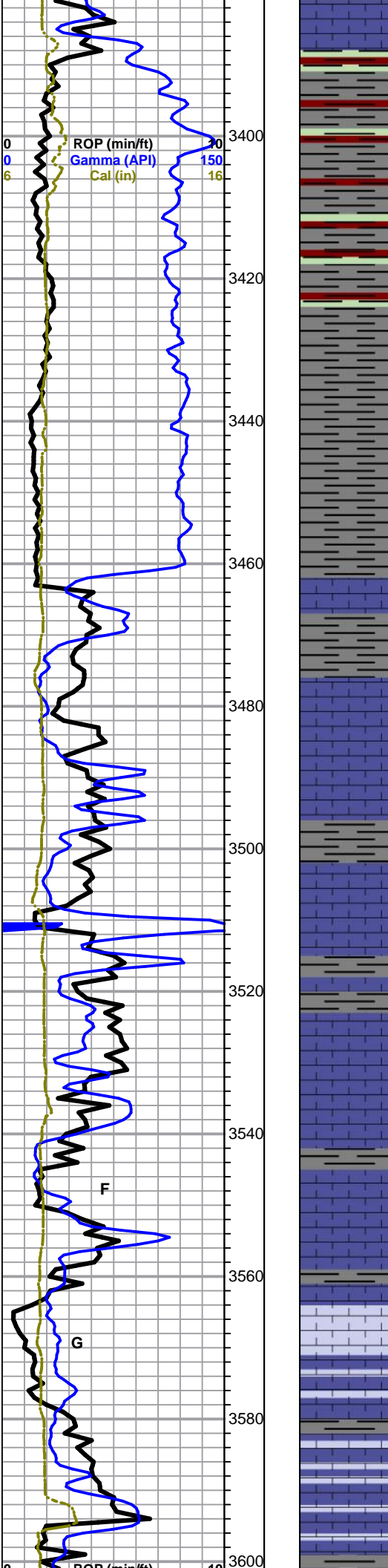
Limestone, cream, cryptocrystalline, fossiliferous, soft to dense, sub chalky, no shows

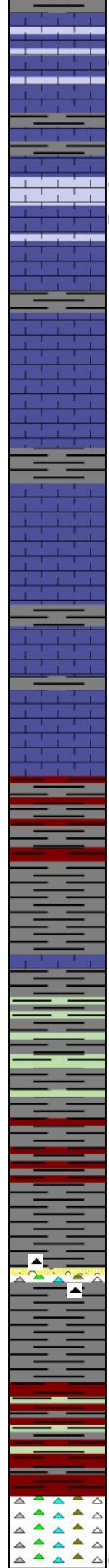
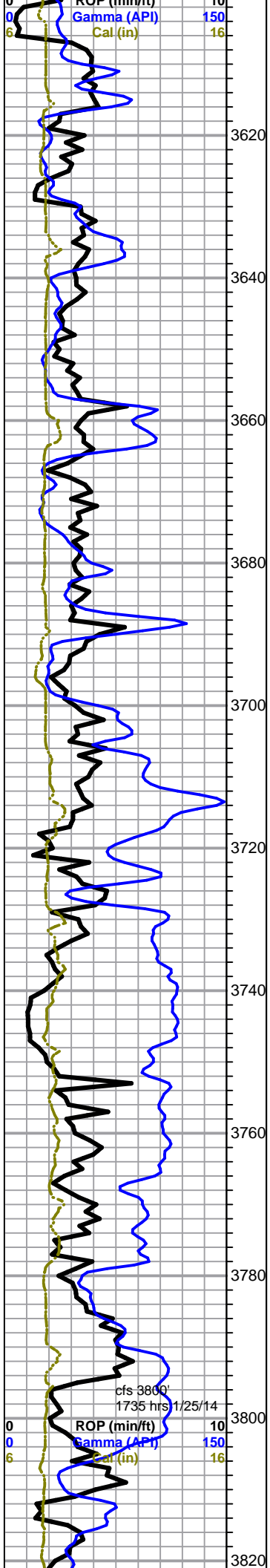
Limestone, cream, cryptocrystalline to microcrystalline, fossiliferous, brown to opaque chert, sharp, soft to dense, sub chalky, no shows

Limestone, cream, microcrystalline, fossiliferous, white chert, pyritic, weathered, soft to dense, sub chalky, poor visible porosity, spotty free oil in tray, bleeding free oil, heavy oil, great cut, great, fluorescence, fleeting odor

Limestone, cream, microcrystalline, bioclastic, fossiliferous, opaque/gray chert, pyritic, weathered, soft to dense, sub chalky, poor visible porosity, spotty free oil in tray, slow bleeding free oil, heavy oil, great cut, great, fluorescence, fleeting odor

Limestone, cream, microcrystalline, sub bioclastic, fossiliferous, brown to chert, pyritic, oomoldic, sub chalky, soft to dense, shows from above





Limestone, cream to light gray, microcrystalline, sub bioclastic, fossiliferous, oolitic, poor visible porosity, surface etching, sub chalky, staining, heavy thick oil, faint odor, poor cut, poor fluorescence

3620

Limestone, cream to light gray, microcrystalline, sub bioclastic, fossiliferous, oolitic, oomoldic, poor visible porosity, surface etching, sub chalky, staining, heavy thick oil, faint odor, after break fair to good cut, poor fluorescence

3640

Limestone, cream to tan, microcrystalline, fossiliferous, orange fossiliferous chert, sub oolitic, white chert, pyritic, soft to dense, sub chalky, shows carried from above

3660

Stark Shale 3665 -1700 (Logged Top 3658 -1693)

Limestone, white to cream, microcrystalline to cryptocrystalline, fossiliferous, gray chert, sub oolitic, soft to dense, sub chalky, no shows

3680

Limestone, cream, microcrystalline, sub bioclastic, fossiliferous, soft to dense, sub chalky, no shows

3700

Base KC 3711 -1746 (Logged Top 3707 -1742)

Shale, gray to red, silty

3720

Shale, gray to pale green to red to lavender, silty gray wash

3760

Conglomerate 3780 -1815 (Logged Top 3778 -1813)

Limestone, olive, dense, trace of oragne/yellow fossiliferous chert, sub chalky, abundant shale

3780

Shale, gray wash, silty

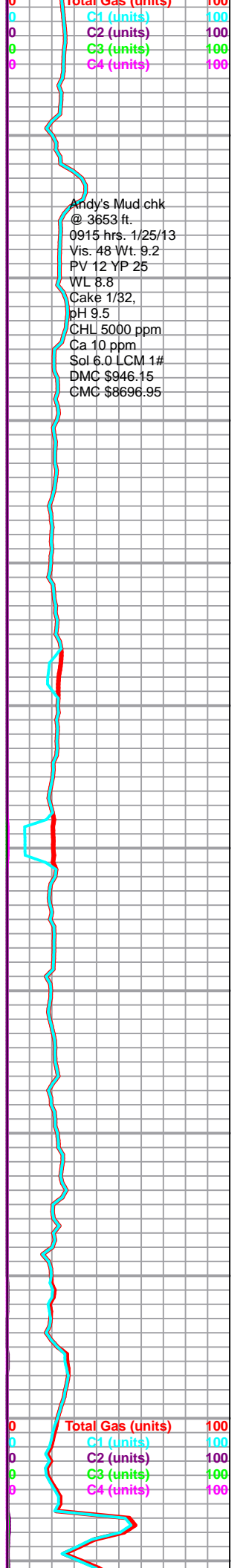
3800

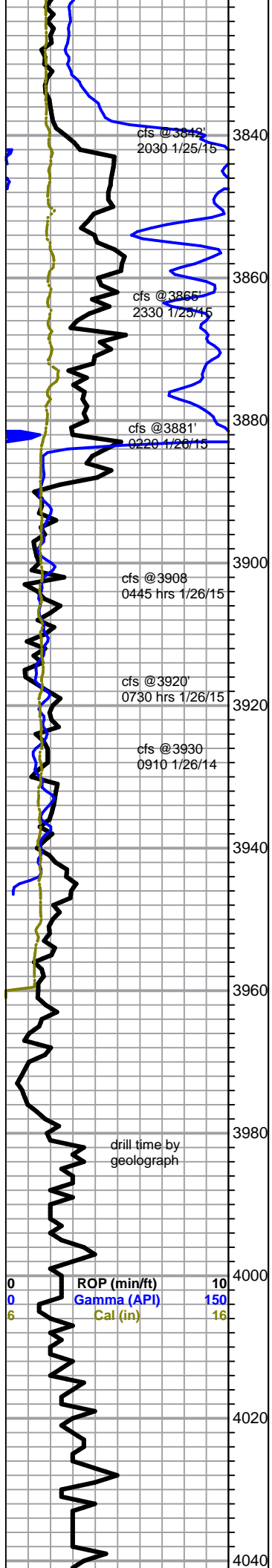
Shale, red wash to gray to pale green, silty

Viola 3810 -1845 (Logged Top 3806 -1841)

mixed multi colored chert, etching on fresh chert, triple oolitic, fresh

3820





mixed multi colored chert, etching on fresh chert, tripolitic, fresh chert, poor visible porosity, spotty free oil in tray, spotty slow bleeding oil, fair to good cut on break, fair fluorescence, fleeting odor, dead stain, gas

Simpson 3842 -1877 (Logged Top 3839 -1874)

Chert, same as above, shows same as above, more free oil

Sand, cloudy, sub angular, sub rounds, poor sorting, fair cemented, dead stain

Shale, pale green, waxy, pyritic

Simpson Sand 3888 -1923 (Logged Top 3884 -1919)

Sand, clear to cloudy, fine to med. grain, sub angular, poor to faint sorting, fair cemented, pyritic, friable, inter-granular porosity, stained, spotty free oil on break, spotty free oil in tray, great odor, great fluorescence, fair to good cut

Arbuckle 3903 -1938 (Logged Top 3894 -1929)

Dolomite, light gray to cream, microcrystalline, sucrosic, poor visible porosity, oolitic, intercrystalline, pin hole vugs, free oil in tray, great odor, slow tight bleed, great fluorescence, poor to fair cut

Dolomite, same as above, no oolites, oil show weakens/ falls out

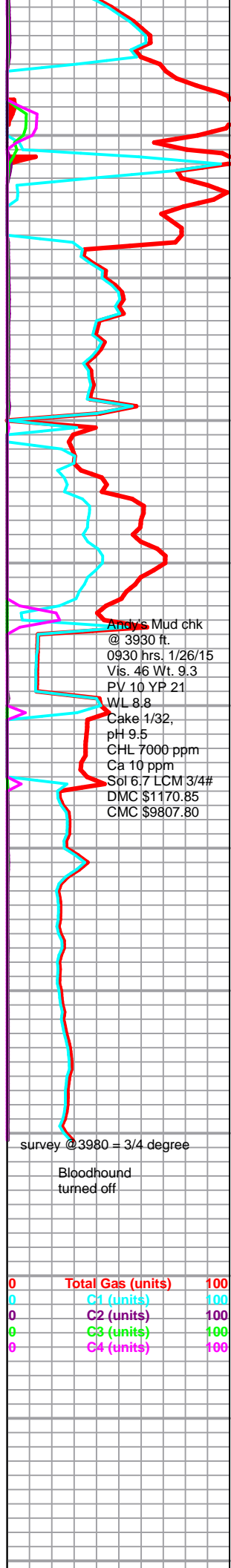
Dolomite, white to cream, microcrystalline, sucrosic, scattered poor visible porosity, pin hole vugs, recrystallized oolitic, sub oomoldic, intercrystalline, caliche-chalk, trace spotty free oil in tray, slight staining, fleeting odor

Dolomite, white to cream, microcrystalline, sucrosic, poor visible porosity, pin hole vugs, oolitic, oolmodic, intercrystalline, abundant caliche-chalk, faint odor from above

TD @3980' 1200hrs 1/26/15
Logged TD @3987'

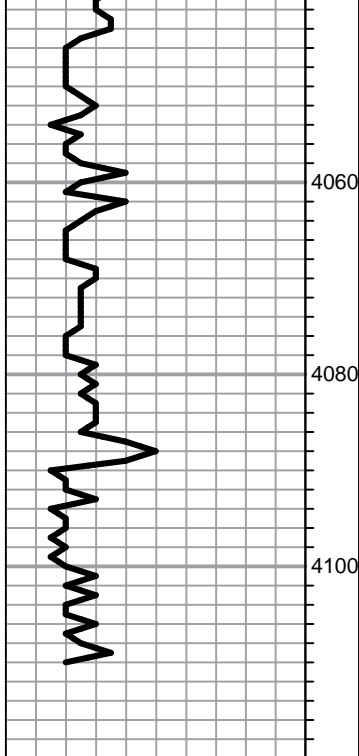
Dolomite, white to cream, microcrystalline to cryptocrystalline, pyritic, recrystallized oolites, sucrosic, poor visible porosity, pin hole vugs, intercrystalline, sub caliche-chalk, soft o dense, no shows

Dolomite, cream, microcrystalline, sucrosic, poor visible porosity, pin hole vugs, oolmodic, intercrystalline, sub caliche-chalk, soft to dense, no shows



drill time by geolograph

Bloodhound turned off



Dolomite, same as above, no shows

Dolomite, cream to tan, microcrystalline to cryptocrystalline, sucrosic, poor visible porosity, surface etching, recrystallized oolites, intercrystalline, abundant caliche-chalk, soft to dense, no shows

TD @4100' 0800 hrs 1/27/14

Andys Mud chk
@ 4110 ft.
0800 hrs. 1/27/15
Vis. 48 Wt. 9.3
PV 11 YP 20
WL 8.8
Cake 1/32,
pH 9.5
CHL 6000 ppm
Ca 10 ppm
Sol 6.8 LCM 2#
DMC \$447.00
GMC \$10254.80