

OPERATOR

Company: CARRIE EXPLORATION AND DEVELOPMENT, LLC
 Address: 210 W 22nd STREET
 HAYS, KANSAS 67601

Contact Geologist: RON HEROLD
 Contact Phone Nbr: 785-625-9318
 Well Name: MAX WELLS C # 2
 Location: SE SW NE NE SEC. 34-T20S-R10W
 API: 15-159-22,823-00-00
 Pool:
 State: KANSAS

Field: GROVES
 Country: USA

Scale 1:240 Imperial

Well Name: MAX WELLS C # 2
 Surface Location: SE SW NE NE SEC. 34-T20S-R10W
 Bottom Location:
 API: 15-159-22,823-00-00
 License Number: 6768
 Spud Date: 5/4/2015 Time: 3:00 PM
 Region: RICE COUNTY
 Drilling Completed: 5/8/2015 Time: 6:00 AM
 Surface Coordinates: 1015' FNL & 881' FEL
 Bottom Hole Coordinates:
 Ground Elevation: 1723.00ft
 K.B. Elevation: 1733.00ft
 Logged Interval: 0.00ft To: 0.00ft
 Total Depth: 3380.00ft
 Formation: LANSING-KANSAS CITY
 Drilling Fluid Type: CHEMICAL/FRESH WATER GEL

SURFACE CO-ORDINATES

Well Type: Vertical
 Longitude: -98.4094885
 Latitude: 38.2719158
 N/S Co-ord: 1015' FNL
 E/W Co-ord: 881' FEL

LOGGED BY

Company: SOLUTIONS CONSULTING, INC.
 Address: 108 W 35TH
 HAYS, KS 67601

Phone Nbr: (785) 639-1337
 Logged By: GEOLOGIST

Name: HERB DEINES

CONTRACTOR

Contractor: SOUTHWIND DRILLING, INC.
 Rig #: 1
 Rig Type: MUD ROTARY
 Spud Date: 5/4/2015 Time: 3:00 PM
 TD Date: 5/8/2015 Time: 6:00 AM
 Rig Release: 5/8/2015 Time: 4:00 PM

ELEVATIONS

K.B. Elevation: 1733.00ft Ground Elevation: 1723.00ft
 K.B. to Ground: 10.00ft

NOTES

WELL DRILLED TO 3380' WITH 5 1/2" PRODUCTION RAN AND SET 1' OFF BOTTOM.

| | | |
|------------------------|-----------------------|----------------------|
| MAX WELLS #C-2 | MAX WELLS #C-1 | BURNS # 1 |
| SE SW NE NE | N2 N2 NW | SW NW NE |
| SEC.34-20S-10W | SEC.35-20-10W | SEC.34-20-10W |
| 1723'GL 1733'KB | KB 1733' | KB 1731' |

| <u>FORMATION</u> | <u>SAMPLE TOPS</u> | <u>LOG TOPS</u> | <u>LOG TOPS</u> |
|------------------|--------------------|-----------------|-----------------|
| Topeka | 2535- 802 | - 805 | - 804 |
| Heebner Sh. | 2823-1090 | -1091 | -1099 |
| Toronto | 2846-1113 | -1112 | -1121 |
| Douglas Sh. | 2854-1121 | -1121 | -1129 |
| Brown Lime | 2955-1222 | -1219 | -1232 |
| LKC | 2978-1245 | -1248 | -1257 |
| BKC | 3241-1508 | -1510 | -1522 |
| Arbuckle | 3349-1616 | -1620 | -1628 |
| RTD | 3380-1647 | -1667 | -1644 |

SUMMARY OF DAILY ACTIVITY

5-4-15 RU, spud 3:00 PM, set 8 5/8" surface casing to 307' w/200 sxs
Common 2%Gel 3%CC, slope 1/2 degree

5-5-15 335', drill plug at 6:00AM

5-6-15 2015', drilling

5-7-15 2960', drilling, CFS 3000', short trip

5-8-15 3380', short trip, CCH, LDDP, run 5 1/2" production casing and cement

| |
|--|
| |
| |
| |
| |
| |
| |

ROCK TYPES

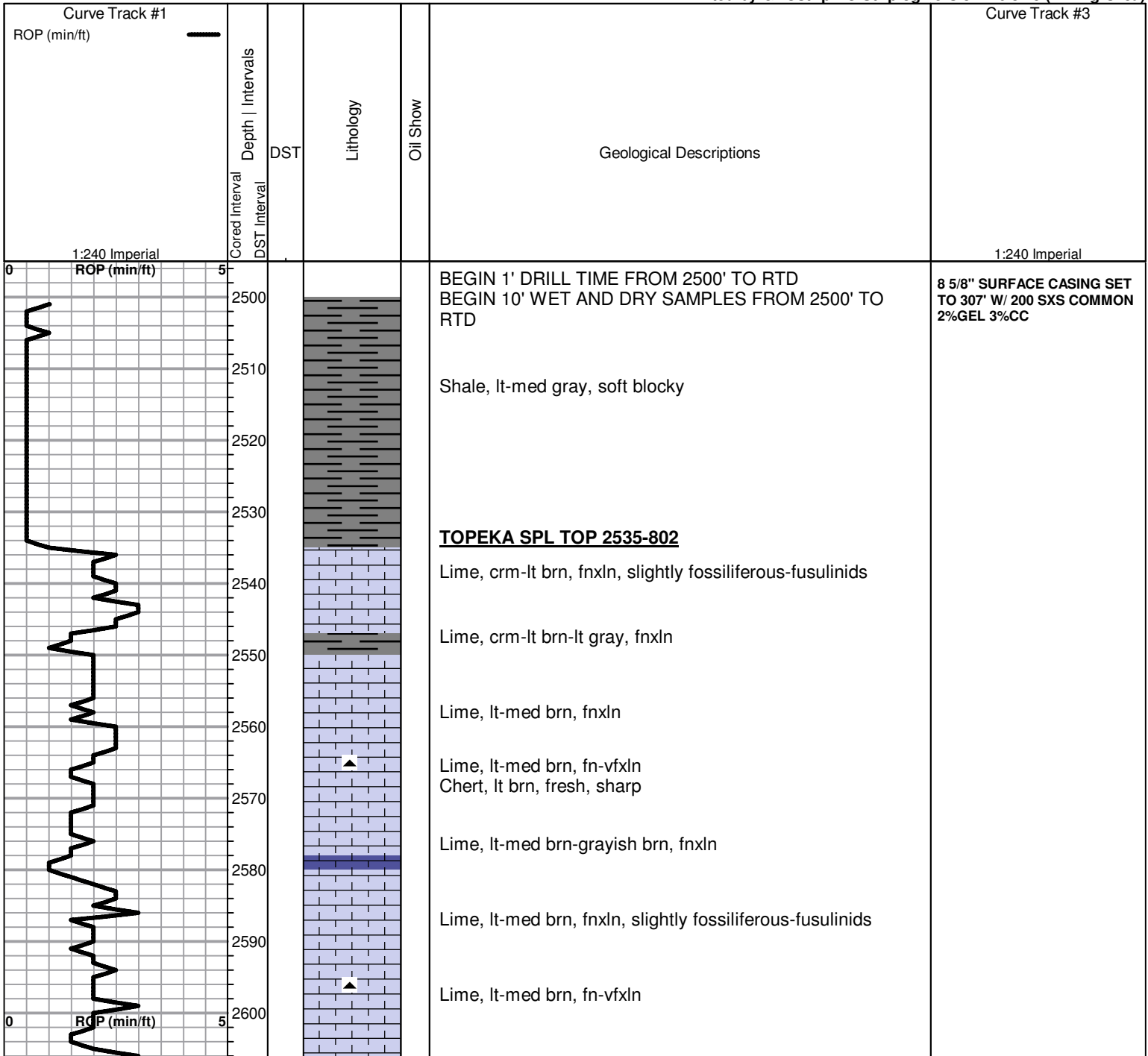
| | | | | |
|----------|-----------|------------|------------|----------|
| Cht vari | Dolprim | Lscongl | Carbon Sh | CglSandy |
| Clystgy | Lmst fw<7 | shale, grn | shale, red | |
| Clystcol | Lmst fw>7 | shale, gry | Ss | |

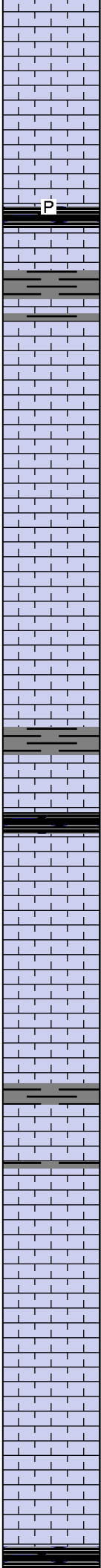
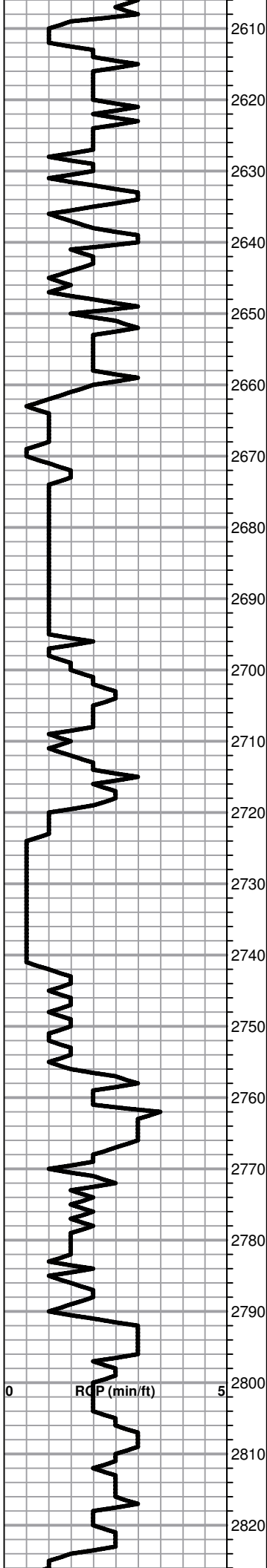
ACCESSORIES

MINERAL
▲ Chert, dark
P Pyrite

FOSSIL
○ Oolite
⊕ Oomoldic

Printed by GEOstrip VC Striplog version 4.0.8.15 (www.grsi.ca)





Lime, lt brn-lt gray, fnxln, slightly fossiliferous

Lime, lt brn, fnxln

Lime,lt brn, fnxln with pyritic inclusions

Shale, gray-black carbonaceous

Lime, lt brn, vfxln, slightly fossiliferous

Shale, med gray, firm, waxy

Lime, lt brn, fn-vfxln, hard on crush

Lime, crm-lt brn, fnxln-slightly granular with increasing bedded chalk in lt chalky matrix

Lime, lt brn, granular, slightly chalky

Lime, tan-lt brn, granular, slight chalk and scattered fossil fragments

Lime, tan-lt brn, granular-fnxln

Lime, tan-lt brn, fn-vfxln

Lime, lt brn, fn-vfxln, increasing bedded chalk

Shale, gray-black carbonaceous, blocky

Lime, crm-lt brn, granular, chalky with white wash

Lime, crm-tan, bedded chalk in chalk matrix

Lime, crm-tan, fnxln-granular

Shale, med-dark gray, calcareous

Lime, lt-med brn-med grayish brn, fn-vfxln, slightly fossiliferous

Lime, lt-med brn, fn-vfxln, slight bedded chalk

Lime, lt-med brn, fnxln grading into micro xln

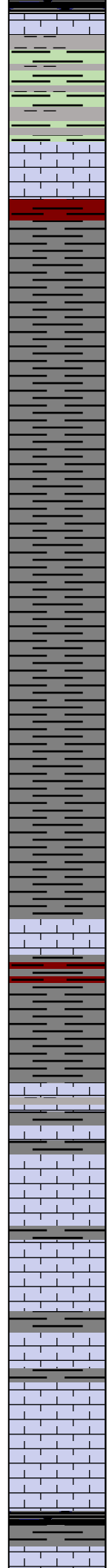
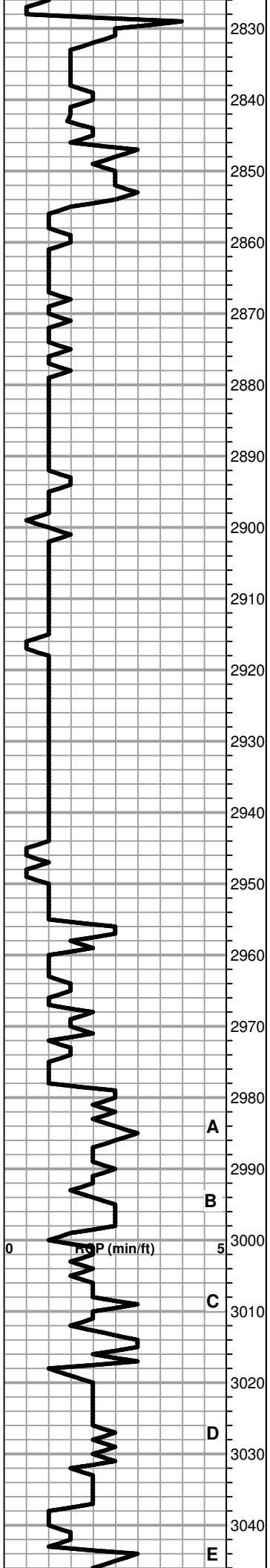
Lime, lt-med brn, fn-vfxln

Lime, lt-med brn, fnxln

Lime, lt-med brn, fnxln

HEEBNER SHALE SPL TOP 2823-1090

Shale, black carbonaceous, fissile, blocky



Shale, black carbonaceous, fissile, blocky
Lime, lt gray, vfxln-micro xln

Shale, dove gray to lime green, soft mud to firm blocky

TORONTO SPL TOP 2846-1113
Lime, tan-crm, fnxln-slightly granular, NS

DOUGLAS SHALE SPL TOP 2854-1121
Shale, red soft mud-firm blocky grading into reddish brn, firm blocky

Shale, lt-med gray, soft-firm blocky

Shale, lt-med gray, soft gritty, poorly sorted material in part, NS

Shale, lt-med gray, soft blocky

Shale, lt-med gray, most soft blocky with few sticky clumps, slightly micaceous in part, NS

Shale, lt-med gray, blocky with thin bedding planes in part, micaceous, gritty, NS

Shale, lt-med gray, med-firm blocky

Shale, lt-med gray, med-firm blocky

Shale, lt-med gray, med-firm blocky

BROWN LIME SPL TOP 2955-1222
Lime, med brn-med grayish brn, fn-vfxln, slightly fossiliferous

Shale, reddish brn-med gray, soft-firm blocky, thin beds of gritty, sandy material, micaceous, NS

LKC SPL TOP 2978-1245
Lime, crm-lt gray, fnxln

Lime, crm-lt gray, fnxln, scattered fine gray mottling

Lime, lt-med brn, fn-vfxln

Lime, crm-lt brn, fnxln, no visible porosity

Lime, crm-lt brn, fnxln-slightly granular with slight bedded chalk, NS

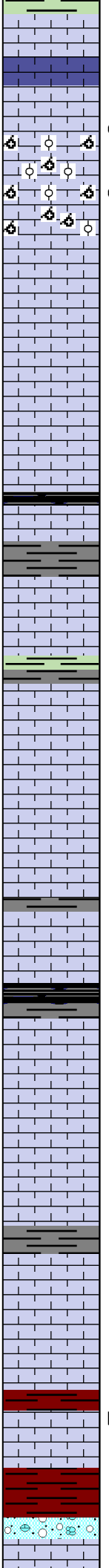
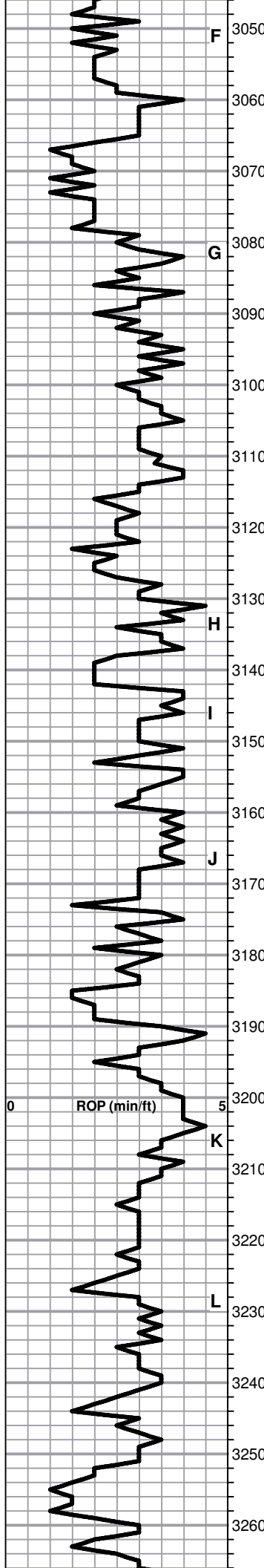
Lime, lt brn, fnxln, slight micro fossil content in part, NS

Lime, lt-med brn-grayish brn, fnxln with gray mottling near shale boundary

Shale, med-dark gray, soft blocky

Lime, med brn-med grayish brn, fnxln, thin fossil beds in

CFS 3000' AND SHORT TRIP



part

Lime, lt brn, fnxln, micro fossil content but not well developed, NS

Lime, crm-lt brn-grayish brn, fnxln

● **TOP OF "G" ZONE POROSITY 3065-1332**

Lime, crm, oolitic/oomoldic, lt scattered to saturated stain, lt odor and scattered SFO on crush

● **BASE OF "G" ZONE POROSITY 3078-1345**

Lime, crm-tan, fnxln, soft crush, bedded chalk

Lime, crm-tan, fnxln

Lime, crm-lt brn, fnxln

Lime, lt-med brn-grayish brn, fnxln, fine mottling near shale boundary

Shale, black carbonaceous
Lime, med brn, fnxln

Shale, med gray, firm, blocky

Lime, crm-lt brn, fnxln, few scattered casts, NS

Shale, lime green, soft mud to soft blocky
Lime, crm-lt brn, fn-vfxln, NS

Lime, crm, fn-vfxln

Lime, crm-offwhite, fn-vfxln

Lime, crm-lt brn, fn-vfxln

Shale, gray-black, blocky

Lime, crm, fn-micro xln

Lime, crm-lt brn, fn-micro xln

Lime, crm, fn-vfxln

Lime, lt brn, fnxln

Shale, med gray-black, blocky

Lime, crm-lt brn, fn-micro xln

Lime, crm-lt brn, fn-micro xln

BKC SPL TOP 3241-1508

Shale, reddish brn, firm blocky

D
Lime, white-crm, fnxln, scattered vugs and molds with heavy dark oil staining, no odor

Shale, reddish brn with lt red wash
Chert, fine rubble and nodules

Lime, crm, fnxln, red shale staining in pores and cracks, NS

