



**TRILOBITE  
TESTING, INC.**

# DRILL STEM TEST REPORT

Berexco LLC.

**9-1S-36W Rawlins, KS**

2020 N Bramblewood  
Wichita, KS 67206

**Kevin #1-9**

Job Ticket: 60893

**DST#: 1**

ATTN: Bryan Bynog

Test Start: 2015.03.04 @ 16:21:00

## GENERAL INFORMATION:

Formation: **Oread**

Deviated: No Whipstock: ft (KB)

Time Tool Opened: 18:53:00

Time Test Ended: 02:59:00

Test Type: Conventional Bottom Hole (Initial)

Tester: Kevin Mack

Unit No: 82

**Interval: 39996.0 ft (KB) To 4050.0 ft (KB) (TVD)**

Reference Elevations: 3182.00 ft (KB)

Total Depth: 4050.00 ft (KB) (TVD)

3171.00 ft (CF)

Hole Diameter: 7.88 inches Hole Condition: Good

KB to GR/CF: 11.00 ft

**Serial #: 8874**

**Inside**

Press @ Run Depth: 163.36 psig @ 3997.00 ft (KB)

Capacity: 8000.00 psig

Start Date: 2015.03.04

End Date:

2015.03.05

Last Calib.:

2015.03.05

Start Time: 16:22:00

End Time:

02:59:00

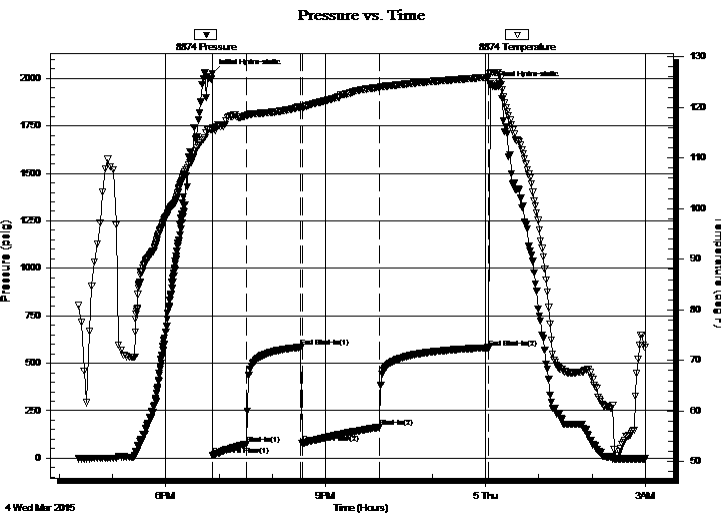
Time On Btm:

2015.03.04 @ 18:52:30

Time Off Btm:

2015.03.05 @ 00:06:00

**TEST COMMENT:** 40 - IF- 1/4" Blow buit to 4 3/4"  
60 - IS- No Return  
90 - FF- Blow started at 8 min. Built to 5"  
120 - FS- No Return



## PRESSURE SUMMARY

Time (Min.)	Pressure (psig)	Temp (deg F)	Annotation
0	2026.08	116.04	Initial Hydro-static
1	16.98	115.40	Open To Flow (1)
39	74.95	118.34	Shut-In(1)
100	584.51	120.11	End Shut-In(1)
101	78.87	120.02	Open To Flow (2)
188	163.36	123.97	Shut-In(2)
311	582.04	125.98	End Shut-In(2)
314	1961.97	126.89	Final Hydro-static

## Recovery

Length (ft)	Description	Volume (bbl)
120.00	MW 30M 70W	0.59
120.00	WM 20W 80M	0.59
70.00	Mud 100M	0.34

## Gas Rates

	Choke (inches)	Pressure (psig)	Gas Rate (Mcf/d)



**TRILOBITE  
TESTING, INC.**

# DRILL STEM TEST REPORT

**FLUID SUMMARY**

Berexco LLC.

**9-1S-36W Rawlins, KS**

2020 N Bramblewood  
Wichita, KS 67206

**Kevin #1-9**

Job Ticket: 60893

**DST#: 1**

ATTN: Bryan Bynog

Test Start: 2015.03.04 @ 16:21:00

## Mud and Cushion Information

Mud Type: Gel Chem

Cushion Type:

Oil API:

deg API

Mud Weight: 9.00 lb/gal

Cushion Length:

ft

Water Salinity:

27000 ppm

Viscosity: 64.00 sec/qt

Cushion Volume:

bbbl

Water Loss: 6.80 in<sup>3</sup>

Gas Cushion Type:

Resistivity: 0.00 ohm.m

Gas Cushion Pressure:

psig

Salinity: 1100.00 ppm

Filter Cake: 2.00 inches

## Recovery Information

Recovery Table

Length ft	Description	Volume bbbl
120.00	MW 30M 70W	0.590
120.00	WM 20W 80M	0.590
70.00	Mud 100M	0.344

Total Length: 310.00 ft      Total Volume: 1.524 bbl

Num Fluid Samples: 0

Num Gas Bombs: 0

Serial #:

Laboratory Name:

Laboratory Location:

Recovery Comments: RW .3 @ 59 deg = 27000 ppm

Serial #: 8874

Inside

Berexco LLC.

Kevin #1-9

DST Test Number: 1

