



**TRILOBITE
TESTING, INC.**

DRILL STEM TEST REPORT

Berexco LLC.

9-1S-36W Rawlins, KS

2020 N Bramblewood
Wichita, KS 67206

Kevin #1-9

Job Ticket: 60894

DST#: 2

ATTN: Bryan Bynog

Test Start: 2015.03.05 @ 15:57:00

GENERAL INFORMATION:

Formation: **LKC "A"**

Deviated: No Whipstock: ft (KB)

Time Tool Opened: 18:18:30

Time Test Ended: 00:20:00

Test Type: Conventional Bottom Hole (Initial)

Tester: Kevin Mack

Unit No: 82

Interval: 4065.00 ft (KB) To 4165.00 ft (KB) (TVD)

Total Depth: 4165.00 ft (KB) (TVD)

Hole Diameter: 7.88 inches Hole Condition: Good

Reference Elevations: 3182.00 ft (KB)

3171.00 ft (CF)

KB to GR/CF: 11.00 ft

Serial #: 8653 Outside

Press @ Run Depth: 28.19 psig @ 4066.00 ft (KB)

Start Date: 2015.03.05

End Date:

2015.03.06

Start Time: 15:58:00

End Time:

00:20:00

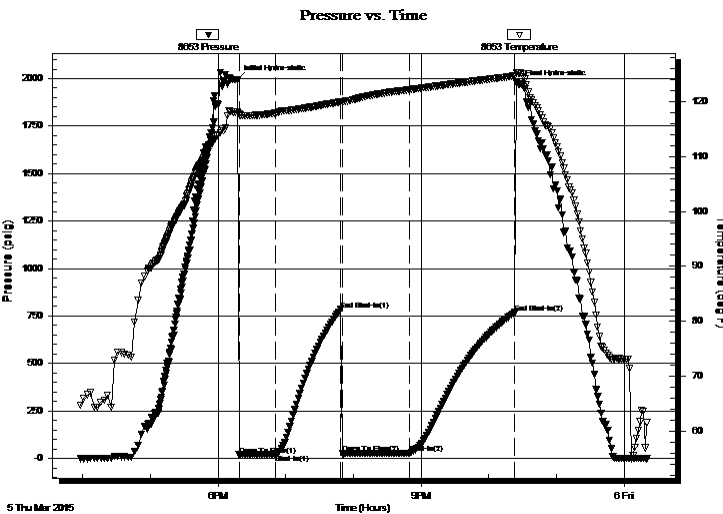
Capacity: 8000.00 psig

Last Calib.: 2015.03.06

Time On Btm: 2015.03.05 @ 18:17:00

Time Off Btm: 2015.03.05 @ 22:26:30

TEST COMMENT: 30 - IF- 1/4" Blow died to a Weak Surface Blow
60 - IS- No Return
60 - FF- No Blow
90 - FS- No Return



PRESSURE SUMMARY

Time (Min.)	Pressure (psig)	Temp (deg F)	Annotation
0	1993.20	118.07	Initial Hydro-static
2	19.17	117.70	Open To Flow (1)
34	22.57	117.91	Shut-In(1)
92	783.50	119.95	End Shut-In(1)
93	24.86	119.94	Open To Flow (2)
153	28.19	122.17	Shut-In(2)
246	768.07	124.66	End Shut-In(2)
250	1971.35	125.21	Final Hydro-static

Recovery

Length (ft)	Description	Volume (bbl)
15.00	Mud 100M	0.07

Gas Rates

Choke (inches)	Pressure (psig)	Gas Rate (Mcf/d)



**TRILOBITE
TESTING, INC.**

DRILL STEM TEST REPORT

FLUID SUMMARY

Berexco LLC.

9-1S-36W Rawlins, KS

2020 N Bramblewood
Wichita, KS 67206

Kevin #1-9

Job Ticket: 60894

DST#: 2

ATTN: Bryan Bynog

Test Start: 2015.03.05 @ 15:57:00

Mud and Cushion Information

Mud Type: Gel Chem

Cushion Type:

Oil API:

deg API

Mud Weight: 9.00 lb/gal

Cushion Length:

ft

Water Salinity:

ppm

Viscosity: 63.00 sec/qt

Cushion Volume:

bbbl

Water Loss: 6.00 in³

Gas Cushion Type:

Resistivity: 0.00 ohm.m

Gas Cushion Pressure:

psig

Salinity: 1100.00 ppm

Filter Cake: 2.00 inches

Recovery Information

Recovery Table

Length ft	Description	Volume bbl
15.00	Mud 100M	0.074

Total Length: 15.00 ft Total Volume: 0.074 bbl

Num Fluid Samples: 0

Num Gas Bombs: 0

Serial #:

Laboratory Name:

Laboratory Location:

Recovery Comments:

