



TRILOBITE TESTING, INC.

DRILL STEM TEST REPORT

Berexco LLC.

9-1S-36W Rawlins, KS

2020 N Bramblewood
Wichita, KS 67206

Kevin #1-9

Job Ticket: 60895

DST#: 3

ATTN: Bryan Bynog

Test Start: 2015.03.06 @ 09:08:00

GENERAL INFORMATION:

Formation: **LKC "B"**
 Deviated: No Whipstock: ft (KB)
 Time Tool Opened: 11:50:30
 Time Test Ended: 17:45:30
 Interval: **4150.00 ft (KB) To 4220.00 ft (KB) (TVD)**
 Total Depth: 4220.00 ft (KB) (TVD)
 Hole Diameter: 7.88 inches Hole Condition: Good
 Test Type: Conventional Bottom Hole (Initial)
 Tester: Kevin Mack
 Unit No: 82
 Reference Elevations: 3182.00 ft (KB)
 3171.00 ft (CF)
 KB to GR/CF: 11.00 ft

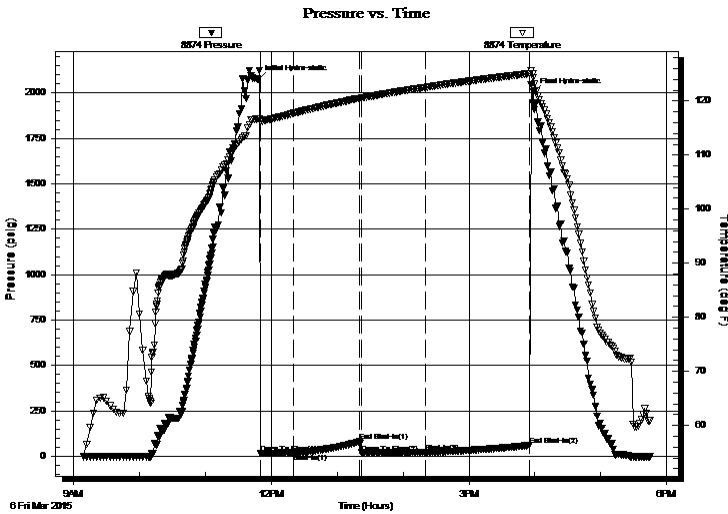
Serial #: 8874

Inside

Press @ Run Depth: 19.62 psig @ 4151.00 ft (KB) Capacity: 8000.00 psig
 Start Date: 2015.03.06 End Date: 2015.03.06 Last Calib.: 2015.03.06
 Start Time: 09:09:00 End Time: 17:45:30 Time On Btm: 2015.03.06 @ 11:48:00
 Time Off Btm: 2015.03.06 @ 15:58:30

TEST COMMENT: 30 - IF- 1/4" Blow died back to weak Surface Blow
 60 - IS- No Return
 60 - FF- No Blow
 90 - FS- No Return

PRESSURE SUMMARY



Time (Min.)	Pressure (psig)	Temp (deg F)	Annotation
0	2075.81	116.69	Initial Hydro-static
3	17.31	116.16	Open To Flow (1)
33	18.14	117.73	Shut-In(1)
92	79.87	120.48	End Shut-In(1)
94	19.03	120.53	Open To Flow (2)
153	19.62	122.53	Shut-In(2)
247	60.08	125.05	End Shut-In(2)
251	2004.18	124.33	Final Hydro-static

Recovery

Length (ft)	Description	Volume (bbl)
5.00	OSM 100M (oil spots)	0.02

Gas Rates

Choke (inches)	Pressure (psig)	Gas Rate (Mcf/d)



**TRILOBITE
TESTING, INC.**

DRILL STEM TEST REPORT

FLUID SUMMARY

Berexco LLC.

9-1S-36W Rawlins, KS

2020 N Bramblewood
Wichita, KS 67206

Kevin #1-9

Job Ticket: 60895

DST#: 3

ATTN: Bryan Bynog

Test Start: 2015.03.06 @ 09:08:00

Mud and Cushion Information

Mud Type: Gel Chem

Cushion Type:

Oil API:

deg API

Mud Weight: 9.00 lb/gal

Cushion Length:

ft

Water Salinity:

ppm

Viscosity: 63.00 sec/qt

Cushion Volume:

bbbl

Water Loss: 6.00 in³

Gas Cushion Type:

Resistivity: 0.00 ohm.m

Gas Cushion Pressure:

psig

Salinity: 1100.00 ppm

Filter Cake: 2.00 inches

Recovery Information

Recovery Table

Length ft	Description	Volume bbl
5.00	OSM 100M (oil spots)	0.025

Total Length: 5.00 ft Total Volume: 0.025 bbl

Num Fluid Samples: 0

Num Gas Bombs: 0

Serial #:

Laboratory Name:

Laboratory Location:

Recovery Comments:

