



TRILOBITE TESTING, INC

DRILL STEM TEST REPORT

Berexco LLC.

9-1S-36W Rawlins, KS

2020 N Bramblewood
Wichita, KS 67206

Kevin #1-9

Job Ticket: 62311

DST#: 5

ATTN: Bryan Bynog

Test Start: 2015.03.10 @ 16:34:00

GENERAL INFORMATION:

Formation: **Pawnee**

Deviated: No Whipstock: ft (KB)

Time Tool Opened: 20:00:40

Time Test Ended: 02:15:00

Test Type: Conventional Bottom Hole (Reset)

Tester: Ryan Nichols

Unit No: 78

Interval: 4495.00 ft (KB) To 4600.00 ft (KB) (TVD)

Reference Elevations: 3182.00 ft (KB)

Total Depth: 4600.00 ft (KB) (TVD)

3171.00 ft (CF)

Hole Diameter: 7.88 inches Hole Condition: Good

KB to GR/CF: 11.00 ft

Serial #: 8322 Outside

Press@RunDepth: 108.42 psig @ 4496.00 ft (KB)

Capacity: 8000.00 psig

Start Date: 2015.03.10

End Date:

2015.03.11

Last Calib.: 2015.03.11

Start Time: 16:34:01

End Time:

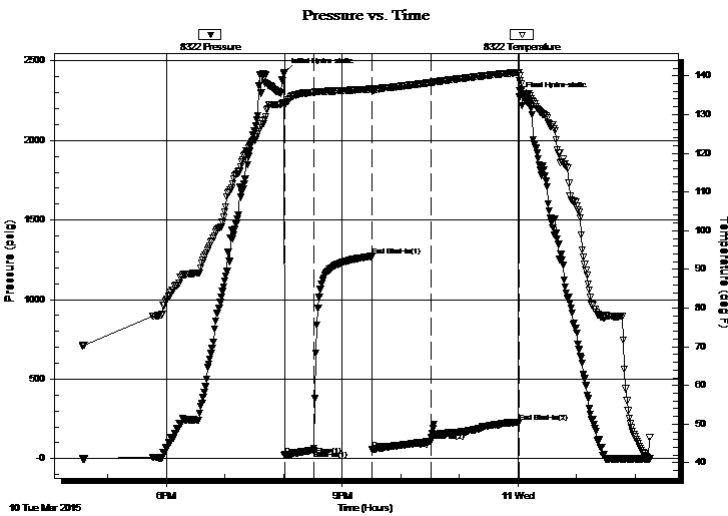
02:15:00

Time On Btm: 2015.03.10 @ 20:00:30

Time Off Btm: 2015.03.11 @ 00:01:30

TEST COMMENT: 30 IF - Surface blow built to 2"
60 ISI - No return
60 FF - No blow
90 FSI - No return

PRESSURE SUMMARY



Time (Min.)	Pressure (psig)	Temp (deg F)	Annotation
0	2428.02	133.05	Initial Hydro-static
1	21.25	132.43	Open To Flow (1)
30	53.29	135.71	Shut-In(1)
90	1271.59	136.58	End Shut-In(1)
90	58.65	136.26	Open To Flow (2)
150	108.42	138.28	Shut-In(2)
241	229.45	140.90	End Shut-In(2)
241	2273.01	140.00	Final Hydro-static

Recovery

Length (ft)	Description	Volume (bbl)
58.00	MCW - 30%M - 70%W	0.29
174.00	MCW - 15%M - 85%W	0.86
58.00	WCM - 50%M - 50%W	0.29

Gas Rates

	Choke (inches)	Pressure (psig)	Gas Rate (Mcf/d)

* Recovery from multiple tests



**TRILOBITE
TESTING, INC**

DRILL STEM TEST REPORT

FLUID SUMMARY

Berexco LLC.

9-1S-36W Rawlins, KS

2020 N Bramblewood
Wichita, KS 67206

Kevin #1-9

Job Ticket: 62311

DST#: 5

ATTN: Bryan Bynog

Test Start: 2015.03.10 @ 16:34:00

Mud and Cushion Information

Mud Type: Gel Chem

Cushion Type:

Oil API:

deg API

Mud Weight: 9.00 lb/gal

Cushion Length:

ft

Water Salinity:

27000 ppm

Viscosity: 78.00 sec/qt

Cushion Volume:

bbbl

Water Loss: 7.60 in³

Gas Cushion Type:

Resistivity: 0.00 ohm.m

Gas Cushion Pressure:

psig

Salinity: 1000.00 ppm

Filter Cake: 3.00 inches

Recovery Information

Recovery Table

Length ft	Description	Volume bbbl
58.00	MCW - 30%M - 70%W	0.285
174.00	MCW - 15%M - 85%W	0.856
58.00	WCM - 50%M - 50%W	0.285

Total Length: 290.00 ft Total Volume: 1.426 bbl

Num Fluid Samples: 0

Num Gas Bombs: 0

Serial #:

Laboratory Name:

Laboratory Location:

Recovery Comments: RW = .445 @ 44 DEG

