

Field Ticket

Original

Field Ticket Number: 0902124030 Field Ticket Date: Wednesday, February 11, 2015 Planning Order #: NA

**Bill To:**  
 TAPSTONE ENERGY LLC  
 210 PARK AVE STE 1350  
 OKLAHOMA CITY, OK, 73102

**Ship To:**  
 JONES 6-35-8 1H, HARPER,  
 WALDRON, KS, 67150

**Job Name:** 9-5/8" Surface Casing  
**Order Type:** ZOH  
**Well Name:** JONES 6-35-8 1H  
**Company Code:** 1100  
**Customer PO No.:** NA  
**Shipping Point:** Blackwell, OK, US Shipping Pt  
**Sales Office:** MID-CONTINENT BD  
**Well Type:** HORIZONTAL OIL  
**Well Category:** Development  
**Rig Name#:** NOMAC 07

Material	Description	QTY	UOM	Unit Amount	Gross Amount	Discount	Net Amount
101214575	PLUG,CMTG, TOP, 9 5/8, HWE, 8.16 MIN/9.06 MA	1	EA	454.00	454.00	\$ 113.50	340.50
<b>Totals USD</b>					\$ 50,771.07	\$ 34,735.55	\$ 16,035.52

The Road to Excellence Starts with Safety

Sold To #: 372073 Ship To #: 3645749 Quote #: 002200021 Sales Order #: 0902124030

Customer: TAPSTONE ENERGY LLC Customer Rep:

Well Name: JONES 6-35-8 Well #: 1H API/UWI #: 15-077-22128-01

Field: UNDESIGNATED City (SAP): WALDRON County/Parish: HARPER State: KANSAS

Legal Description: NW NE NE 7-35S-8W-200FNL-480FEL

Contractor: NOMAC Rig/Platform Name/Num: NOMAC 07

Job BOM: 7521

Well Type: HORIZONTAL OIL

Sales Person: HALAMERICA\HX25353

Job Supervisor: Brian Penn

Job

Formation Name

Formation Depth (MD) Top Bottom

Form Type BHST

Job depth MD 809ft

Water Depth WK Ht Above Floor 4

Perforation Depth (MD) From To

Well Data

Description New / Used Size in ID in Weight lbm/ft

Open Hole Section 3 9.625 8.921 36 LTC J-55 0 800

Casing 3 9.625 8.921 36

Tools and Accessories

Type Size in Qty Make Depth ft

Guide Shoe 9.625 1 800 Top Plug 9.625 1

Float Shoe 9.625 1 Bottom Plug 9.625 1

Float Collar 9.625 1 SSR plug set 9.625 1

Insert Float 9.625 1 Plug Container 9.625 1

Stage Tool 9.625 1 Centralizers 9.625 1

Miscellaneous Materials

Gelling Agt Conc Surfactant Inhibitor Conc

Treatment Fid Conc Acid Type Sand Type Size Qty Conc

Fluid Data

Stage/Plug #: 1

Fluid # Stage Type Fluid Name Qty Qty Uom Mixing Density lbm/gal

1 Water Spacer Water Spacer 10 bbl 8.33

Fluid # Stage Type Fluid Name Qty Qty Uom Mixing Density lbm/gal

2 Tail Cement SWIFTCM (TM) SYSTEM 490 sack 15

Yield ft/sack 1.316

Mix Fluid Gal Rate bbbl/mi 5

Total Mix Fluid Gal 6.2

Fluid # Stage Type Fluid Name Qty Qty Uom Mixing Density lbm/gal

1 Water Spacer Water Spacer 10 bbl 8.33

Fluid # Stage Type Fluid Name Qty Qty Uom Mixing Density lbm/gal

2 Tail Cement SWIFTCM (TM) SYSTEM 490 sack 15

Yield ft/sack 1.316

Mix Fluid Gal Rate bbbl/mi 5

Total Mix Fluid Gal 6.2

Fluid # Stage Type Fluid Name Qty Qty Uom Mixing Density lbm/gal

1 Water Spacer Water Spacer 10 bbl 8.33

Fluid # Stage Type Fluid Name Qty Qty Uom Mixing Density lbm/gal

2 Tail Cement SWIFTCM (TM) SYSTEM 490 sack 15

Yield ft/sack 1.316

Mix Fluid Gal Rate bbbl/mi 5

Total Mix Fluid Gal 6.2

Fluid # Stage Type Fluid Name Qty Qty Uom Mixing Density lbm/gal

1 Water Spacer Water Spacer 10 bbl 8.33

CALCIUM CHLORIDE, PELLETT, 50 LB (101509387)

# HALLIBURTON

## Cementing Job Summary

0.1250 lbm		POLY-E-FLAKE (101216940)																		
Fluid #	Stage Type	Fluid Name	Qty	Qty UoM	Mixing Density lbm/gal	Yield ft3/sack	Mix Fluid Gal	Rate bbl/mi	Total Mix Fluid Gal	3	Displacement	Displacement	58.6	bbl	8.33					
Cement Left in Pipe		Amount	45.48 ft		Reason		Shoe Joint													
Comment																				



# Summary Report

Sales Order #: 0902124030  
WO #: 0902124030  
PO/AFE #: NA

Crew: \_\_\_\_\_  
Job Start Date: 2/11/2015

Customer:	TAPSTONE ENERGY LLC	Field:	UNDESIGNATED	Job Type:	CMT SURFACE
UWI / API Number:	15-077-22128-01	County/Parish:	HARPER	Service Supervisor:	CASING BOM Brian Penn
Well Name:	JONES 6-35-8	State:	KANSAS	Cust Rep Name:	
Well No:	1H	Latitude:	37.020863	Cust Rep Phone #:	
		Longitude:	-98.220276		
		Sect / Twn / Rng:	7/35/8		

Remarks:		The information stated herein is correct	
		Customer Representative Signature	Customer Representative Printed Name
		Date	

[Type text]

1.5 Job Event Log

Type	Seq. No.	Activity	Graph Label	Date	Time	Source	Comb Pump Rate (bbl/min)	DH Density (ppg)	DS Pump Press (psi)	Comments
Event	1	Call Out	Call Out	2/11/15	00:02:00	USER				Brian penn, RICHARD MAHLOCK
Event	2	Depart Yard Safety Meeting	Depart Yard Safety Meeting	2/11/15	04:00:00	USER				BRIAN PENN, RICHARD MAHLOCK
Event	3	Depart from Service Center or Other Site	Depart from Service Center or Other Site	2/11/15	04:30:00	USER				DEPARTED FROM WOODWARD, OK CREW ARRIVED ON LOCATION SAFELY, MET WITH CUSTOMER DISCUSSED JOB PROCEDURES, PUMPING PROCEDURES, CALCULATIONS, AND SAFETY. CREW REQUESTED ON LOCATION AT 0730
Event	4	Arrive at Location from Other Job or Site	Arrive at Location from Other Job or Site	2/11/15	07:00:00	USER				IDENTIFIED POTENTIAL SAFETY HAZARDS, OVERHEAD HAZARDS, TRIP HAZARDS, PINCH POINTS, BUFFER ZONES, RED ZONES, MUSTER AREAS, DESIGNATED SMOKING AREAS, EVACUATION PLAN, AND SAFE AREAS TO SPOT AND RIG UP EQUIPMENT.
Event	5	Assessment Of Location Safety Meeting	Assessment Of Location Safety Meeting	2/11/15	05:15:00	USER				DISCUSSED POTENTIAL SAFETY HAZARDS, OVERHEAD HAZARDS, TRIP HAZARDS, SLICK SURFACES, COLD WEATHER STRESS, PINCH POINTS, BUFFER ZONES, RED ZONES, MUSTER AREAS, DESIGNATED SMOKING
Event	6	Pre-Rig Up Safety Meeting	Pre-Rig Up Safety Meeting	2/11/15	05:30:00	USER				

[Type text]

[Type text]

Type	Seq. No.	Activity	Graph Label	Date	Time	Source	Comb Pump Rate (bbl/min)	DH Density (ppg)	DS Pump Press (psi)	Comments
Event	8	Rig-Up Equipment	Rig-Up Equipment	2/11/2015	07:30:00	USER				AREAS, EVACUATION PLAN, SAFE AREAS TO SPOT AND RIG UP EQUIPMENT, AND PROPER PPE
Event	10	Pre-Job Safety Meeting	Pre-Job Safety Meeting	2/11/2015	8:20:00	USER				RIGGED UP GROUNG AND FLOOR EQUIPMENT DISCUSSED JOB PROCEDURES, DANGERS OF PRESSURIZED EQUIPMENT, DESIGNATED PUMPING AREAS, EVACUATION PLAN, DESIGNATED MUSTER AREAS, AND PROPER PPE
Event	11	Pressure Test	Pressure Test	2/11/2015	0840	USER	0.10	8.33	3292.00	TESTED LINES TO 3000PSI, RIG FLOOR AND PUMPING AREAS CLEAR, TEST SUCCESSFUL
Event	12	Pump Spacer	Pump Spacer	2/11/2015	0842	USER	3.00	8.38	56.00	PUMPED 10BBL OF FRESHWATER SPACER
Event	13	Pump Lead Cement	Pump Lead Cement	2/11/2015	0846	USER	6.00	15.06	120.00	PUMPED 114BBL OF 1.5PPG SWIFTCEM (490 SKS)
Event	16	Drop Plug	Drop Plug	2/11/2015	0903	USER	2.80	15.12	-5.00	PLUG LEFT CEMENT HEAD
Event	17	Pump Displacement	Pump Displacement	2/11/2015	904	USER	7.50	8.86	-14.00	PUMPED 59 BBL DISPLACEMENT
Event	20	Bump Plug	Bump Plug	2/11/2015	0915	USER	0.00	8.36	702.00	BUMPED PLUG 500PSI OVER PUMPING
Event	21	Check Floats	Check Floats	2/11/2015	0906	USER	0.00	8.28	1.00	FLOATS HELD, .5BBL BLED BACK, 508BBL OF CEMENT RETURNS, FULL RETURNS THROUGH JOB
Event	22	Pre-Rig Down Safety Meeting	Pre-Rig Down Safety Meeting	2/11/2015	0915	USER				DISCUSSED POTENTIAL SAFETY HAZARDS, OVERHEAD HAZARDS,

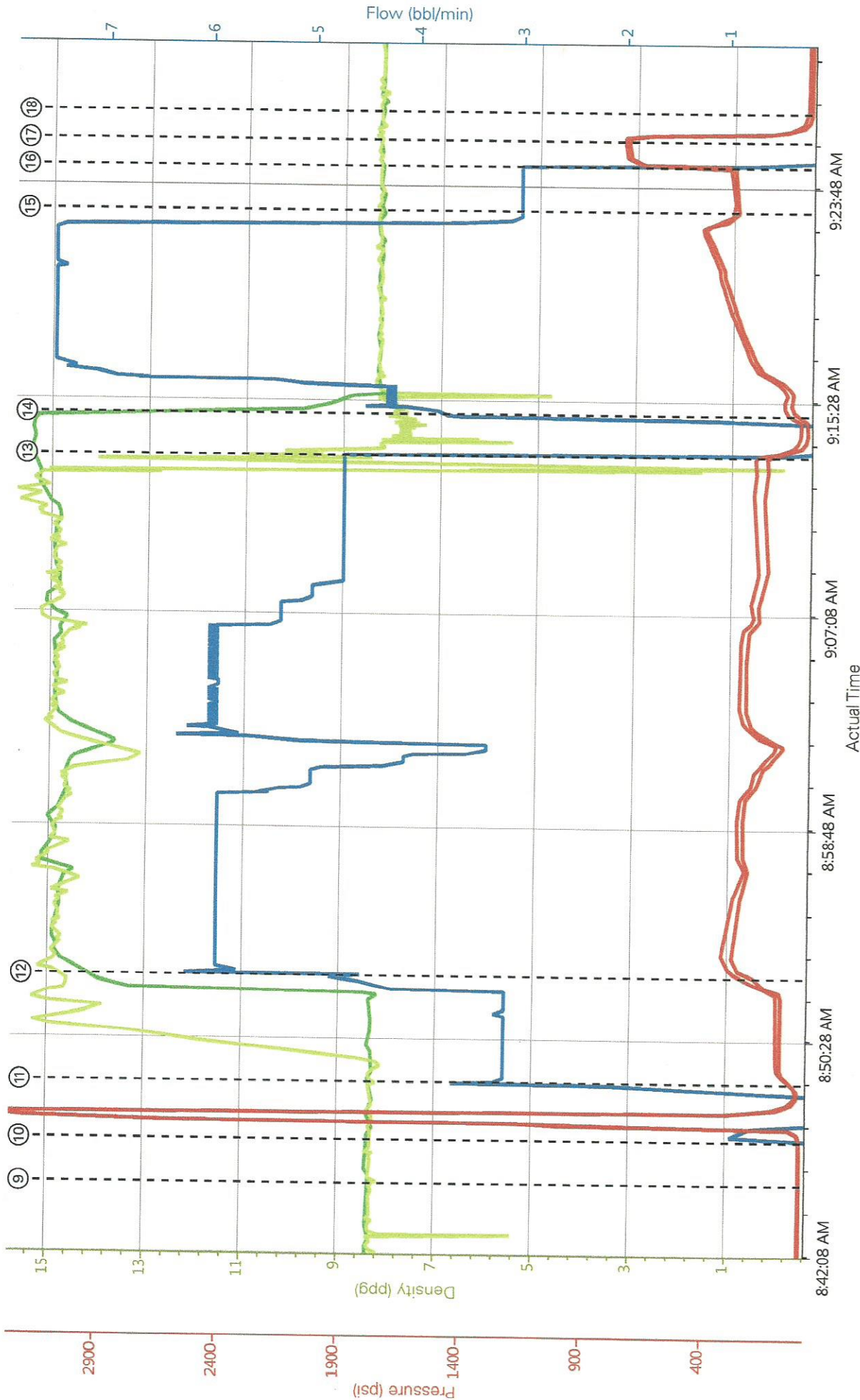
[Type text]

[Type text]

Type	Seq. No.	Activity	Graph Label	Date	Time	Source	Comb Pump Rate (bbbl/min)	DH Density (ppg)	DS Pump Press (psi)	Comments
Event	23	Rig-Down Equipment	Rig-Down Equipment	2/11/2015	0930	USER				TRIP HAZARDS, SLICK SURFACES, COLD WEATHER STRESS, PINCH POINTS, BUFFER ZONES, RED ZONES, MUSTER AREAS, DESIGNATED SMOKING AREAS, EVACUATION PLAN, AND PROPER PPE
Event	25	Depart Location Safety Meeting	Depart Location Safety Meeting	2/11/2015	1000	USER				RIGGED DOWN ALL EQUIPMENT
Event	26	Depart Location	Depart Location	2/11/2015	1030	USER				

[Type text]

Custom Results



DH Density (ppg) Recirc Density (ppg) Comb Pump Rate (bbl/min) PS Pump Press (psi) DS Pump Press (psi)

- ① Call Out n/a; n/a; n/a; n/a; n/a
- ② Pre-Convoy Safety Meeting n/a; n/a; n/a; n/a; n/a
- ③ Depart from Service Center or Other Site n/a; n/a; n/a; n/a; n/a
- ④ Arrive At Loc n/a; n/a; n/a; n/a; n/a
- ⑤ Other n/a; n/a; n/a; n/a; n/a
- ⑥ Pre-Rig Up Safety Meeting n/a; n/a; n/a; n/a; n/a
- ⑦ Rig-Up Equipment 2.64; 2.99 0; 157; 15
- ⑧ Pre-Job Safety Meeting 8.4; 8.34 0; 3