

WELL FILE

# GEOLOGIST'S REPORT

DRILLING TIME & SAMPLE LOG

COMPANY Berexco LLC  
 LEASE Troy NO. 1-7  
 LOCATION 2296' FSL + 1090' FWL  
 SEC. 7 TWP. 29S RNG. 40W  
 COUNTY Stanton STATE Kansas  
 FIELD Arroyo Northeast

ELEVATIONS  
 KB 3328  
 DF 3326  
 GL 3316  
 MEASUREMENTS ARE ALL FROM KB

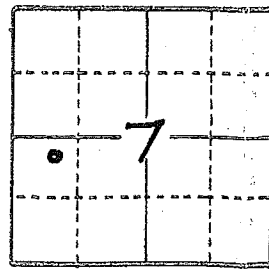
CONTRACTOR Beredco Dalg. Rig #1  
 COMM. 3-12-2015 COMP. 3-29-2015  
 RTD 5848 LTD 5884  
 No. of DST'S Three No. of CORES None

CASING RECORD  
8 7/8" at 1705 W/      SX.  
 of      W/      SX.  
 of      W/      SX.  
 of      W/      SX.  
 EL. LOG Res. SP-GR  
Den. Neut GR Caliper  
ML. Sonic

SAMPLES SAVED FROM 3500 TO TD  
 DRILLING TIME KEPT FROM 3500 TO TD  
 SAMPLES EXAMINED FROM 3500 TO TD  
 GEOLOGICAL SUPERVISION FROM 3500 TO TD  
 GEOLOGIST ON WELL Edwin H. GRIEVES

### FORMATION TOPS

FORMATION	SAMPLE	LOG	SUBSEA
<u>Base Heebner</u>	<u>3710</u>	<u>3738</u>	<u>- 410</u>
<u>Toronto</u>	<u>3723</u>	<u>3754</u>	<u>- 426</u>
<u>Lansing Fm.</u>	<u>3768</u>	<u>3798</u>	<u>- 470</u>
<u>Kansas City Fm.</u>	<u>4191</u>	<u>4222</u>	<u>- 894</u>
<u>BKC</u>	<u>4334</u>	<u>4372</u>	<u>- 1044</u>
<u>Marmaton</u>	<u>4360</u>	<u>4400</u>	<u>- 1072</u>
<u>Ft. Scott</u>	<u>4534</u>	<u>4566</u>	<u>- 1238</u>
<u>Morrow Fm</u>	<u>5021</u>	<u>5058</u>	<u>- 1730</u>
<u>Chester Fm</u>	<u>5499</u>	<u>5518</u>	<u>- 2200</u>
<u>St. Genevieve</u>	<u>5571</u>	<u>5600</u>	<u>- 2272</u>
<u>St. Louis</u>	<u>5627</u>	<u>5670</u>	<u>- 2342</u>
<u>TD</u>	<u>5848</u>	<u>5884</u>	<u>    </u>



API# 15-187-21319

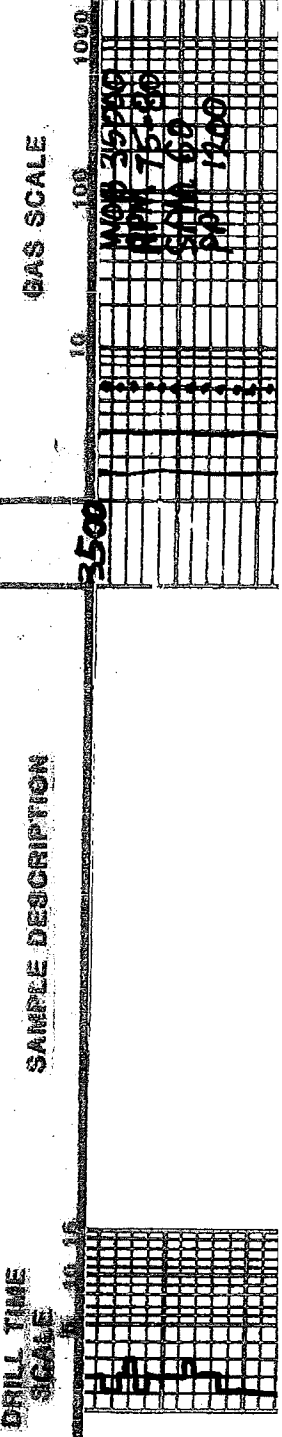
REMARKS Earth-Tech had an unmanned gas detection trailer on this well from 3500 feet to total depth.

*Edwin H. Grievs  
 Geologist  
 1515  
 1315  
 1115*

C1 = METHANE  
 C2 = ETHANE  
 C3 = PROPANE  
 C4 = ISOBUTANE  
 C5 = BUTANE  
 C6 = ISOPENTANE  
 C7 = PENTANE

CHROMATOGRAPH  
 HOT WIRE BY  
 TOTAL GAS VOLUME

LITHOLOGY  
 SANDSTONE  
 LIMESTONE  
 SHALE  
 OTHER  
 SUSTONE  
 DOLOMITE  
 GRANITE WASH  
 SAND & GYP



DATE

DRILL TIME

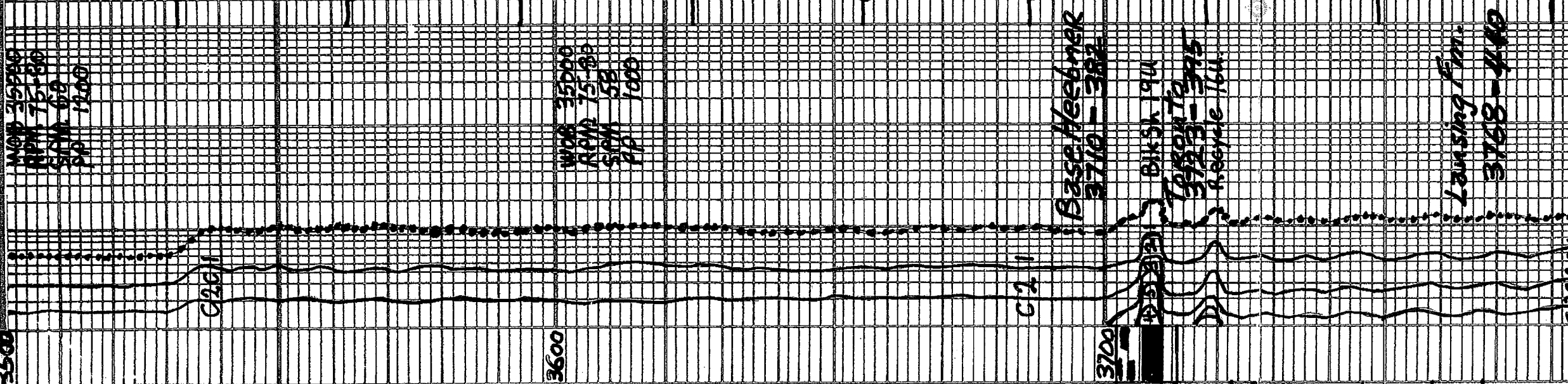
DRILLER

SCALE

SAMPLE DESCRIPTION

GAS SCALE

3500 3600 3700



Interbedded Limestones w/ scattered trs. Chert

① Slower Dalg. lms. H. gray, grading to tan crypto to v. fn. xlm.; trs. sub-chalk, sub-sucro + packstn.; trs. to abn. w/phantom bolites to oolitic; dull. Yel. to dull. yel. fluor.; No Cut; No Vis Por.

② Faster Dalg. lms. trs. to abn. wht. to cream-chalk, + grayish-tan to tan crypto. to v. fn. xlm.; sub-chalk, sub-sucro to sucro; dull. yel. to dull. H. yel. fluor.; No Cut; abn. pr. to fr. + frag. to excel. micro-pp. to interxn. por.

③ scattered trs. Chert crm. to tan; opaque

Sh. v. drk. gray. to black carb.

lms. grayish-tan; crypto xlm packstn. to sub-lithogr.; dull. yel. fluor.; No Vis Por

Sh. H. gray to lt. green; mushy + soft when wet; silty 1p's

lms. hyp. trs. wht. to cream-chalk + crm. to tan crypto. to v. fn. xlm.; sub-chalk, sub-sucro to trs. sucro; dull. yel. fluor.; No Cut; v. scattered trs. v. pr. micro ppae.

lms. grayish-tan to tan; crypto. to v. fn. xlm.; trs. sub-chalk, sub-sucro packstn. + sub-lithogr.; dull. yel. fluor. No Cut; No Vis Por

Sh. H., med + trs. drk. gray-sh. to v. calc.

Base Heebner  
3710-382

BKS 194

Lansing Fm.  
3768-410

recycle 164



Sh. H., med. & trs. drk. gray-sh. to v. calc.

Interbedded Limestones

① Faster Delg. Lms. trs to hvy. trs. wht. to c.c.m. - chlk & grayish. tan to tan crypto. to v. v. fn. v. ln.; sub-chlk sub-sucro to sucro.; scattered trs. foss.; scattered trs. phantom oolitic to oolitic; dul. vel. to dul. H. vel. fluor.; No cut; scattered trs to hvy trs PR. to fr. micro pp por. & poss. inter xln. por.

② Slower. Delg. Lms. H. gray to tan; crypto. to v. v. fn. xln.; trs. sub-fine, sub-sucro.; packets & TRS sub-lithogr.; scattered trs. to trs. w/phantom oolitic to oolitic; dul. H. vel. to trs H. vel. fluor.; No cut; No Vis POR

Lms. trs. to abn. wht. to cream chlk & tan; crypto. to v. v. fn. xln. v. to ext.aly. oolitic; drk. sh. to v. oolitic; matrix trs. sub-chlk, sub-sucro to sucro. & trs. packets; mottled vel. to glau. vel. fluor.; No cut; abn. PR. fr. ad. to excel.; oolitic por. w/ trs PR. to gl. trs. fr. micro - pp. por.; Quest. Perm

Lms. similar 3954 - 4000 w/ less oolitic & more poritic w/ corresponding reduction in porosity

Lms. tan to lt. gray, mottled IP's, crypto to v. v. fn. xln.; oolitic IP's (tan to lt. gray) sub-chlk sub-sucro & packets; dul. vel. fluor. IP's; No cut; No Vis POR

Lms. similar 3954 - 4000 Lms. lt. gray to tan; crypto. to v. v. fn. xln. trs sub-fine; trs sub-sucro & packets; dul. vel. fluor. IP's; No cut; No Vis POR

Lms. similar 4039 - 4051 w/ abn

Lansing Fm.  
3768-440

3979

3800

3900

392

BIT Trip 3932

EF5

401

4000

W28 95000  
RPM 65-70  
58M 54  
RPM 1000

Lms. similar to 3954 - 4000  
Lms. H. gray, tan, crypt. to v. fine. No Vis for  
Tras sub-chalk, tras sub-succo & pack est. i  
dul. yel. fluor. IP's; No cut; No Vis for

Lms. similar to 4039-4051 w/abn  
sh med to dark gray - calc

Interbedded Lmsts.

① Slower Dalg. Lms. H. gray, tanish IP's  
crypto. to v. fine. tras sub-chalk,  
tras sub-succo & pack est. i scattered,  
dul. yel. fluor. IP's to oolitic (gray);  
No cut; No Vis for

② Faster Dalg. Lms. tras. to hvy. tras  
whit. crm to gray-chalk & grayish-tan  
to tan; crypto. to v. fine. xlm. i  
sub-chalk, sub-succo, tras. foss.  
dul. H. yel. to owl. yel. fluor.  
No cut; No Vis for

Lms. abn. whit. to cream-chalk & tan;  
crypto. to v. fine. xlm. i to extremely oolitic  
matrix sub-chalk, sub-succo & pack est. i  
dul. yel. fluor. IP's; No cut; No Vis for

Lms. H. gray to grayish-tan; crypto. to v. fine.  
xlm. i tras. sub-succo, pack est. i & sub-  
lith ool. i; v. fine. dul. yel. fluor. IP's  
No cut; No Vis for

Lms. tras. whit. to cream-chalk & tan; v. fine. xlm. i  
to tras. crypto. xlm. i; v. to extremely oolitic

for sli. to felty oolitic matrix  
sub-succo. to v. succo & tras. pack est. i  
faint hydrocarbon odor, yel. to light  
yel. fluor. IP's; No cut; abn. fine. i; qd. to  
excl. oolitic por. w/ hvy. tras. poor  
to fair & tras. qd. to sli. tras. excel.  
IP's; micro-p. to inter. ipor. i; prob. to  
Quest. Perm.

Interbedded Limestones

③ Lms. tan, grayish, IP's, crypto to  
v. fine. xlm. i; sub-chalk, sub-succo &  
pack est. i; dul. H. yel. fluor. IP's; No cut  
No Vis for

④ Lms. H. to med. gray, tanish IP's;  
sli. to very shly. crypto xlm. i;  
sub-chalk to or shly. & pack est. i  
No fluor. IP's; No cut; No Vis for

WDB 95000  
RAM 65-70  
SUM 54  
AP 1000

TRAP CHECK

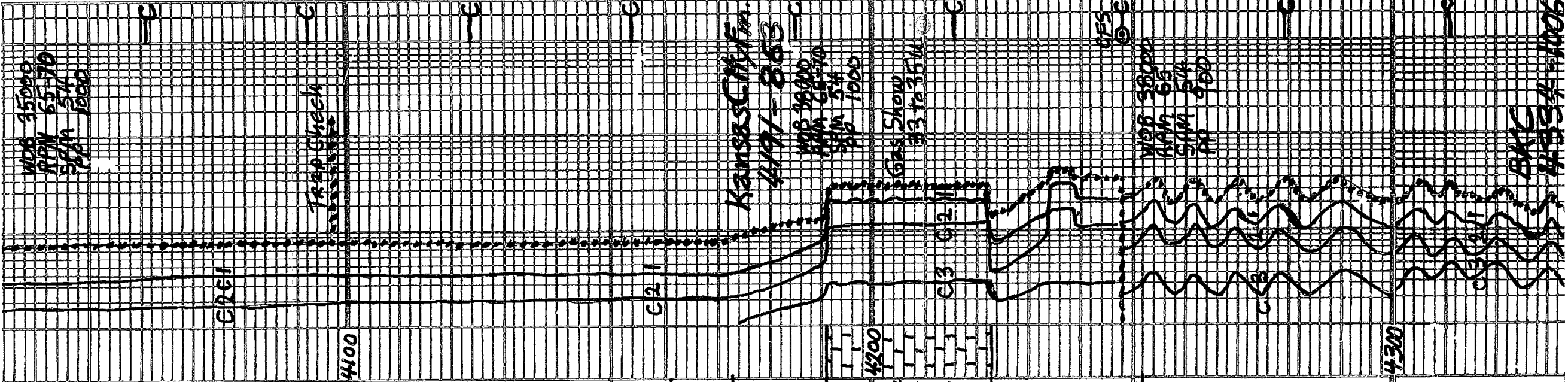
Kansas C. M. F. M.  
4197-888

WDB 96000  
RAM 65-80  
SUM 54  
AP 1000

Gas Show  
33 to 35 W

WDB 98000  
RAM 65  
SUM 54  
AP 1000

WDB 98500  
RAM 65  
SUM 54  
AP 1000



Lms. H. to med. gray - sl. to estly shly. gady. to estly calc. Shs. crypto. xln. sub-shly. No cut. No Vis. Por.

Lms. lt. gray. to tan. crypto xln. P&Ckstr. + sub-lithogr. dul. yel-fluor. No cut. No Vis. Por.

Lms. similar 4360-4368

Pass Sh. v. drk. gray to black. Lms. similar 4370-4368. Lms. to tan. to whit. to cam. chlk. v. g. to tan. xln. sub-shly. sub-succo. P&Ckstr. No cut. No Vis. Por.

Interbedded Lmsts w/ trs Chert thin Shales

① Lms. trs. to hvy. trs. whit. to cam. chlk. & grayish. Tan. to tan. crypto. to v. xln. sub-shly. sub-succo. P&Ckstr. trs. sub-lithogr. scattered trs. Phantom oolitic. to oolitic. dul. yel. fluor. IP's. No cut. No Vis. Por.

② Lms. H. to med. gray - sl. to v. Shly. crypto. to trs. v. v. xln. sub-chlk. for shly. trs. succo. P&Ckstr. to sub-lithogr. scattered trs. dul. yel. fluor. No cut. No Vis. Por.

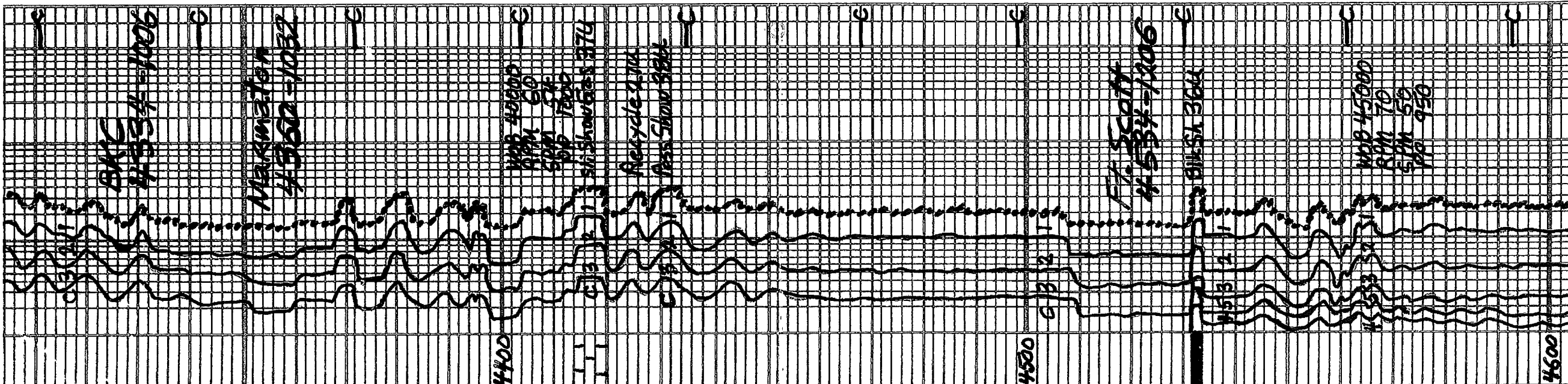
③ Trs. to hvy. trs. Chert H. to drk. gray. + trs. Tan. opaque

Sh. v. drk. gray. to black-carb.

4534-4974

Interbedded Limestones and Shales

Lms. to sub-tan. cream - white



4534-4924

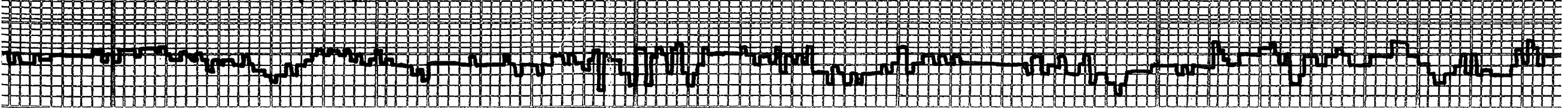
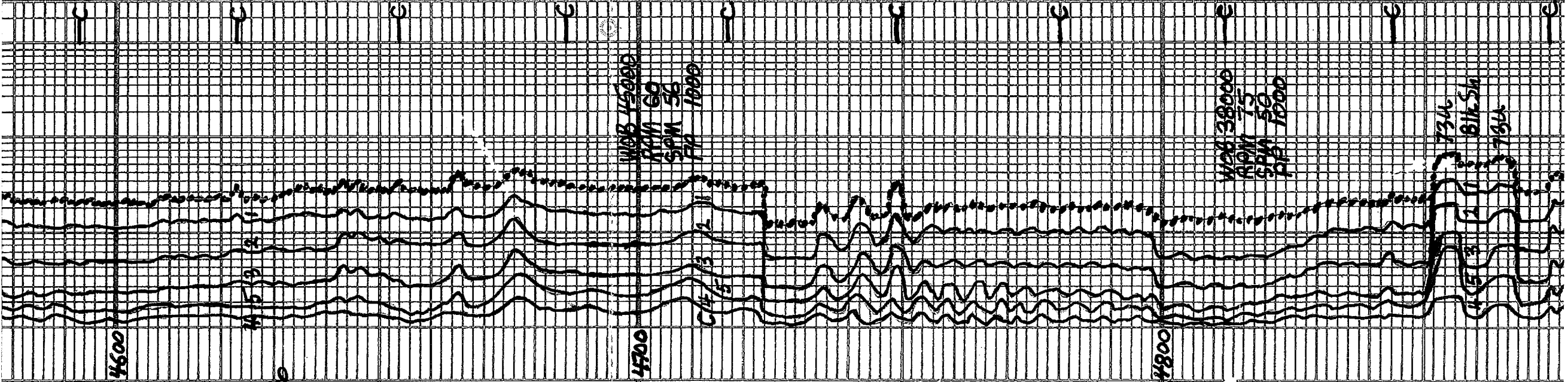
Interbedded Limestones and Shales

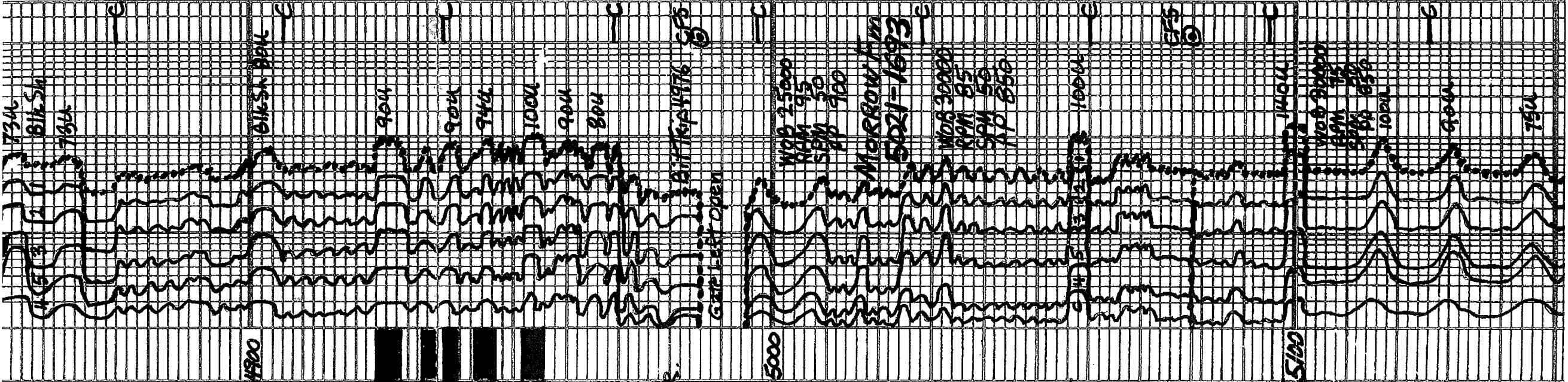
① Lms. fms. wht. to crem. chlk. & tan, graysh. IP's; crypto. to v. v. fine. xln; sub-chlk. 5% to 50% sucero. packstn. and fms. sub-1. thog. red. yel. to tessel. fluor.; No cont. No Vis. Por.

② Lmst. H. med to tes. dk. gray - sh. to extr. sh. to sh. crypto. to v. with xln.; sub-chlk. & / or sh. l.; tes. sub-succ. & packstn. to sub-lithog. & id. yel. fluor. IP's; No cont. No Vis. Por.

③ Sh. med. dk. to v. dk. gray - sh. to extr. sh. scale. IP's, grading to shly. lmst's

④ Scattered Shs v. dk. gray to black carb., increasing with depth





1900

Interbedded Lmsts + Shs similar  
4534 - 4924 predominantly  
black - carb. shales

Lmsts w/ thin interbeds Shales

① Lm. H. to med. gray - sl. to extly  
shly. grading to ool. m. bedded with  
tan. crypto. to v. v. fine. l. in  
sub-succ. cracks to sub-lithogr.  
TRs. v. dwl. H. floors. No cont. No v. for.

② scattered thin interbeds Sh  
med. to v. dek. gray - sl. to extly.  
calc.

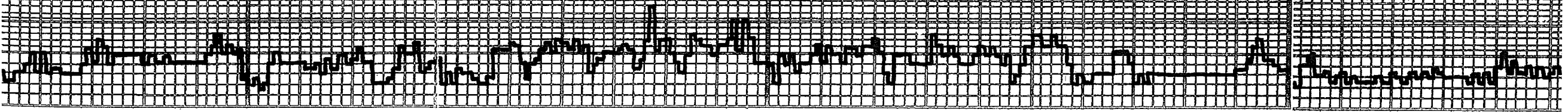
③ scattered thin interbeds Shs  
v. dek. gray to black - carb.

Sh. med. dek. to v. dek. gray and  
black w/ interbeds Lmsts  
similar 4956 - 5021

Sh. med. gray - soft w/ silky luster  
IP's and dek. to v. dek. gray to  
TRs. black w/ v. sl. tes. olive green.

Poss. Qtz Sbst found a few grs of

SA med. to coarse grs - ang  
w/ poss brn. oil str. on one or two



5102-5337 Sh. Tns. med. gray w/silky luster, predominately dark to v. dark gray - splintery lps Tns. Pyrite w/scattered Tns Lms H. to med. gray, tanish lps crypto to v. u. tan. xln; Tns oolitic (gray); Tns. foss. i sub-bas. 0.7 p2c65tn. fo sub. lithogr. dark H. yel. fluor. lps; No Cut No vis. por.

5200

C4H 512 2

750

C

C

Dev. Survey 1077

WGS 22000  
RFM 1000  
SPM 50  
AP 900

5800

H 5 3 2 1

C

Lms SdSt H. gray, tanish lps to med. gas (gas. crypto to v. u. xln); composed Lm. gas + Tns. oolites gray to tan scattered Tns glauc. + v. chlorite; scattered Tns sil. silty v. or sil. Qtz Sdy - v. tan. ang. i. dul. H. yel. fluor.; No vis. por.

5362-5403 Sh med. gray, w/silky luster lps to dark gray - splintery lps, Tns pyrite w/Tns lms. Similar 5337-5362 interbeds or stringing in samples from above

A. 5403-5417 Qtz SdSt H. gray to tan tanish lps, Tns Lm. gas. lps v. v. tan. to v. fm. gr. w/Tns. to med. gas. ang. Tns. sub-rept. (p. 1) 5417 sil. calc. or dolomite, v. tan. gray. v. tan. chlorite; sil. Tns finely disseminated. A Pyrite, a bn. w/silky to dul. yel. fluor. w/Tns. to med. gray. stringing to king cuts No vis. por. Tns to hor. to large Qtz gas. w. f. ang. red. to med. gr. B. 5417-5418 Sh. med. to dark gray. Tns. pyr. + sil. Tns sh. dark red to brn. C. 5425-5444 Qtz. gas clear, with hurtles. H. vel. fm. to coarse ang.

5100

H 5 3 2 1

SHOW 504

C

C

C

C

C

C

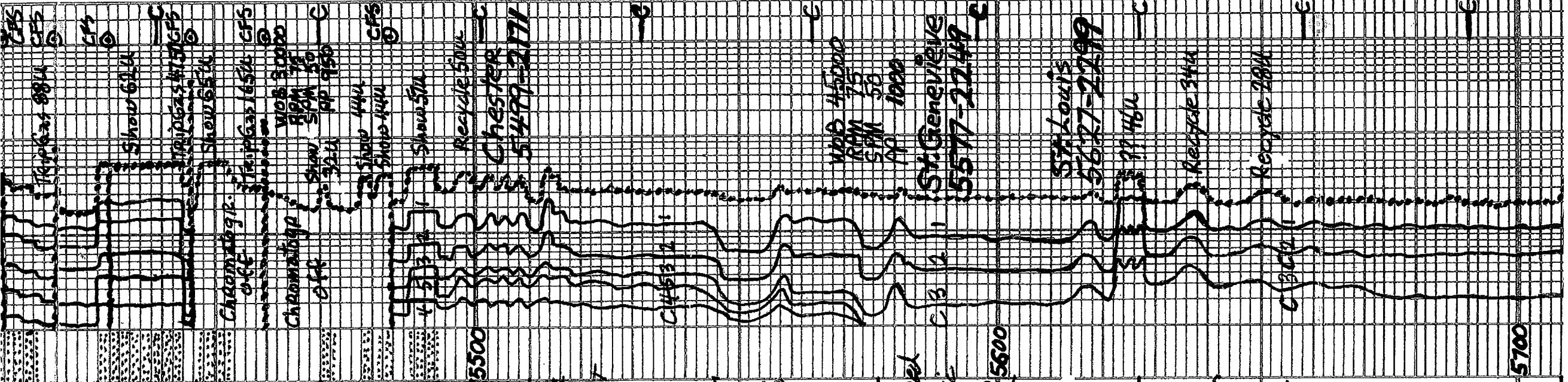


w/lt. sh. to dk. sh. gray to pinkish  
 No. 13 For. to sh. gray to med. gr.  
 5417-5428 sh. med. to dk. gray  
 + r.s. pyr. & sil. sh. dk. red to brn.  
 c. 5428-5444 Qtz. gas clear, w/lt. &  
 hvy. tan. H. yel. to gray. s. ang.  
 sub-ang., sub. angled to well rounded  
 Vol. Sd. 2 boxes & smalls in 6070  
 min. C. samples  
 A. 5444-5447 pos. Sh. similar  
 5417-5428 w/ky. r.s. pyr.  
 E. 5447-5454 + oops. Qtz. gas similar  
 5428-5444 w/ky. r.s. Qtz. Sd.  
 F. tanish. gr. v. to tan. gr. ang. pyr.  
 E. Sp. silt filled IP's. Gas. Red. sh.  
 brn. g. s. sub. gold. to gl. yel. fluor.  
 flush. to red. staining. c. w/ky. r.s.  
 Intergr. pyr. tan. v. pyr. w/bovis. r.  
 F. Prob. Sh. med. to dk. gr. similar  
 5417-5428 w/abn. Qtz. gas. Sd.  
 G. Similar. 5447-5449  
 5470-5493 Qtz. Sd. H. gray to tan  
 silt. w/ky. to v. brn. ang. pyr. to sort  
 fine oil. flush. to yel. to brn. tan. yel.  
 fluor. flush. to excel. staining. c. w/ky.  
 v. abn. w/ky. to 90% + r.s. excel. micropp  
 to intergr. pyr.  
 Prob. Sh. med. to dk. gray

Sh. Reds + Pinks - extremely soft & mushy  
 when wet  
 Interbedded w/ Gradational Shales  
 Sandstones. Siltstones & Limestones  
 ① Sh. reds, brns. & maroon soft & mushy wet  
 ② Siltsh. H. gray to pinks & reds  
 shale filled. Even to soft & mushy wet  
 ③ Qtz Sd. H. gray to tan pink. v. f. fu.  
 gas. silty & red sh. filled IP's  
 No fluor. No cut. No vis. for  
 No show  
 ④ Lms. H. gray to tan. w/ky. r.s. to med. to  
 pinks & reds IP's. No pyr. to v. tan. sh.  
 v. to ext. micro. politis. to  
 fely. to very Qtz. sdy. v. to v. ang.  
 matrix chalk. Sub. chalk & sub. succo.  
 No fluor. No cut. No vis. for  
 Note: v. abn. Morrow Sh and  
 Qtz. Sd. similar 5470-5493  
 in samples

Lms. tanish gray to grayish. tan weathered  
 pinkish to pink IP's. c. pyr. to  
 v. v. fu. s. du. v. to ext. micro. politis  
 and silt. to sh. Qtz. sdy. v. v. fu. -  
 ang. matrix sub. chalk to sub. succo  
 dual. yel. fluor. IP's; No cut. No vis. for

Lms. tan. wht to cream chalk & tan. crm  
 to grayish. tan & tan. crm. pyr. to  
 v. v. fu. s. du. v. to ext. micro. politis  
 (sm. med. & tan. (g.) matrix  
 tan. chalk, sub. chalk, sub. succo  
 p. chert. dual. yel. to tan. yel.  
 fluor. No cut. No vis. for.  
 w/ky. r.s. to hvy. tan. chert; gray,  
 tan & orange opaque  
 sli. trans.



Lms. tan. wht to cream chalk & tan. crm  
 to grayish. tan & tan. crm. pyr. to  
 v. v. fu. s. du. v. to ext. micro. politis  
 (sm. med. & tan. (g.) matrix  
 tan. chalk, sub. chalk, sub. succo  
 p. chert. dual. yel. to tan. yel.  
 fluor. No cut. No vis. for.  
 w/ky. r.s. to hvy. tan. chert; gray,  
 tan & orange opaque  
 sli. trans.

Lms. a bn. wht. to cream chlk w/ chlk. oolites  
 1/8" - 1/4" cm to 1/2" crypts to 1/4" x 1/2" w/ v.  
 to v. to v. oolitic (med to lg. N. T. S. S. M.)  
 matrix chlk. sub-chlk. sub-sucrose  
 Ties. patches of sub. yellow. to yellow. yellow  
 Noctis. Noctis. Noctis. Noctis. Noctis. Noctis.  
 oolites; w/ ties chert gray to tan, oolite

5728 - 5768  
 Interbedded Limestones w/ ties chert  
 ① Slower Dr. lg. Lms. similar 5627-5708  
 ② Faster Dr. lg. Lms. similar 5708-5728

5768 - 5798  
 Interbedded Limestones w/ ties chert  
 ① Slower Dr. lg. Lms. similar 5627-5708  
 ② Faster Dr. lg. Lms. similar 5708-5728  
 ③ Slower Dr. lg. Lms. H. gray to tan, crypts  
 to 1/8" x 1/4" x 1/2" sub-sucrose.  
 patches of sub. yellow. to yellow. yellow  
 dolomitic sub. yellow. to yellow. yellow  
 Noctis. Noctis. Noctis. Noctis. Noctis. Noctis.

5798 - 5848  
 Interbedded Limestones w/ ties chert  
 similar 5768-5798 w/ ties  
 becoming fr. by dolomitic and  
 Si. T. A. w/ gummy anhydrite

**TD 5848**

7/8 inch Bit Info: in out

#1 New Smith TC FH: 23	1710	3932
#2 New Smith TC F271	3932	4967
#3 New Rock bit 6725YG	4967	5848 TD

Circ Points

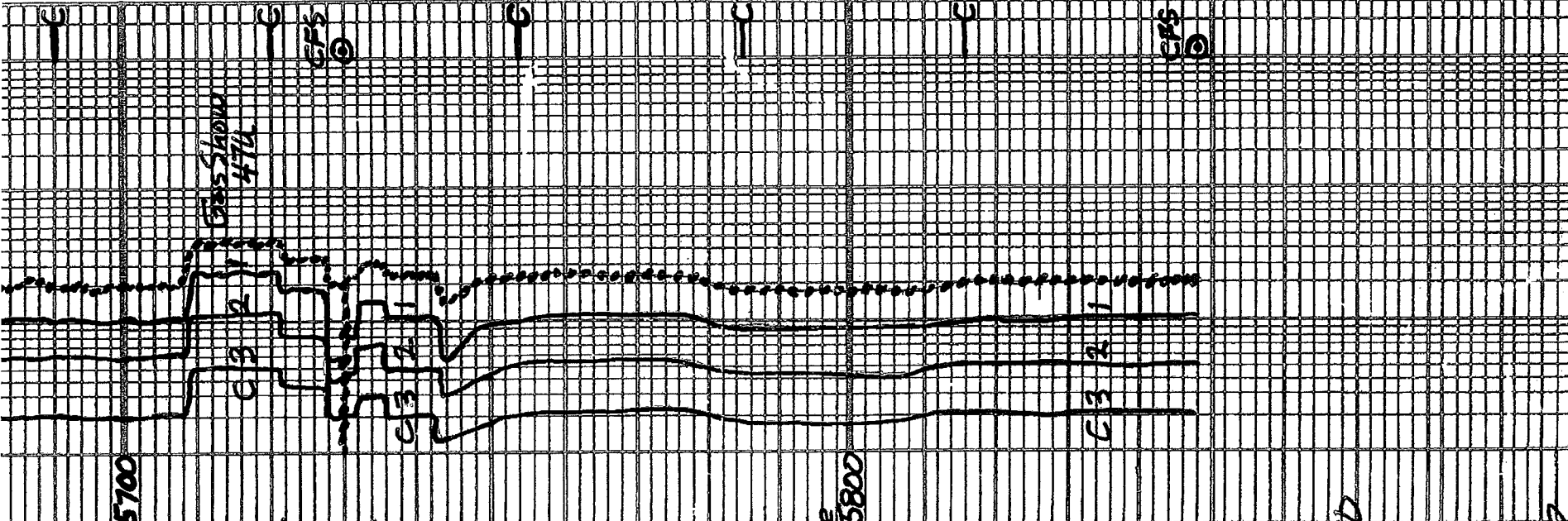
1. 3932	5. 5410	9. 5460
2. 4248	6. 5420	10. 5484
3. 4976	7. 5430	11. 5730
4. 5080	8. 5446	12. 5848 TD

Dev: SUGU. 4. 3932 3/4" 7. 5420 1/4"  
 1. 511 1/4 3/4" 5. 4976 2" 8. 5460 1 1/4"  
 2. 1002 3/4" 6. 5252 2" 9. 5848 3/4" TD

Daily Prog. Progress:

1 3662	at 7:00 AM	3 -16-15
2 3500	at 12:10 PM	3 -16-15
3 3914	at 7:00 AM	3 -17-15
4 4068	at 7:00 AM	3 -18-15
5 4395	at 7:00 AM	3 -19-15
6 4701	at 7:00 AM	3 -20-15
7 4976	at 7:00 AM	3 -21-15
8 5189	at 7:00 AM	3 -22-15
9 5410	at 7:00 AM	3 -23-15
10 5420	at 7:00 AM	3 -24-15
11 5446	at 7:00 AM	3 -25-15
12 5460	at 7:00 AM	3 -26-15
13 5632	at 7:00 AM	3 -27-15
14 5848	at 7:00 AM	3 -28-15
15 5848	at 7:00 AM	3 -29-15

DST #1 MORROW K. S. L. 5947 - 5420  
 20 weak surf. Blow Built to 9 inches  
 FID weak surf. Blow Built to 5 inches  
 Rec. 90 ft. Gassy Mud, 12.998 99% Mud



14 5848 3-28-15  
 15 5848 3-29-15

DST#1 Morrow K2 5447-5440  
 Ia. Weak surf. Blow Built to 9 inches  
 Fd. Weak surf. Blow Built to 5 inches  
 Rec 90 ft. Gassy Mud 1% gas 99% Mud  
 Tool Sample 429es 96% mud  
 Max Temp 124°F  
 IHP 2571#  
 IFF 32704 in 30 min  
 IPIP 457# in 60 min  
 FFP 52-62# in 60 min  
 FSP 445# in 120 min  
 FMP 2590#

DST#2 Morrow K2 5434-5446

Ia. Sl. surf. Blow 808 14 min  
 Fd. Sl. surf. Blow 808 4 min  
 A.C. 1250 ft. 925 in pipe  
 2. Clean oil. 100% oil  
 12.3% water in oil  
 Total Fluid 125 fsc

Grav. of oil 43.8. Max Temp 126°F  
 Tool Sample 28gas 88% oil 10% mud

IHP 2592# in 30 min.  
 IFF 16-35# in 60 min.  
 IPIP 687# in 60 min.  
 FFP 37-62# in 120 min.  
 FSP 707#  
 FMP 2542#

DST#3 Morrow Lower K2

5449 to 5460

Ia. Sl. surf. Blow 808 54 sec.  
 Fd. Weak surf. Blow 12 1/2 in 1/2 min  
 in 23 min then @ 35 min in 120 min

Rec 1730 ft Gas In Pipe Max Temp 137°F  
 Rec Total Fluid 1345 feet gassy water

2% gas 97% wtk. 1% Mud  
 chl 3500ppm pH 7.0 Rw. 22 @ 60°F

Rec 10+ ft loose Qtz gas  
 took 1500 psi to blow collars

glez in Pull 190 000# + Jar Several  
 times to get loose

Tool Sample 100% gassy wtk

IHP 2580# FFP 678-692 in 60 min.  
 IFF 214-513# in 30 min. FSP 703# in 120 min.  
 IPIP 680# in 60 min. FMP 2555#

Mud Info:

Date	3-15	3-16	3-17	3-18	3-19	3-20	3-21	3-22
Depth	1515	1520	1510	1495	1475	1455	1435	1415
Wt.	9.2	9.2	9.1	9.2	9.15	9.15	9.3	9.8
Vis	29	32	46	47	48	53	67	58
PV	-	-	14	15	15	18	20	17
YP	-	-	15	16	16	18	22	21
GS	-	-	17/32	19/32	17/32	17/45	17/45	18/45
WL	N/C	N/C	7.2	6.8	6.8	7.5	8.0	8.0
Cake	-	-	1/32	1/32	1/32	1/32	1/32	1/32
pH	7.0	7.0	10.5	9.0	10.5	9.5	9.5	9.5
Chl	600	400	700	400	200	700	700	400
Ca	hvy	hvy	20	20	20	20	120	60
LCM	1.0	2.0	4.0	5.5	5.0	6.0	8.0	8.0

Date 3-23 3-24 3-25 3-26 3-27 3-28  
 1:50 1:55 1:55 1:55 1:30A 1:30A 1:55A

Depth 5420 5420 5446 5460 5598 5848

101-4 935 104 94 93 93 93 93

Depth	15	20	25	30	35	40	45	50	55	60	65	70	75	80	85	90	95	100
WT	9.2	9.2	9.1	9.1	9.2	9.2	9.1	9.1	9.1	9.1	9.1	9.1	9.1	9.1	9.1	9.1	9.1	9.1
Vis	29	32	46	47	48	53	67	58										
PV	-	-	14	15	15	18	20	17										
YP	-	-	15	16	16	18	22	21										
GS	-	-	17/35	19/32	19/32	17/45	19/45	19/45										
NL	N/C	N/C	7.2	6.8	6.8	7.5	8.0	8.0										
cake	-	-	1/32	1/32	1/32	1/32	1/32	1/32										
pH	7.0	7.0	10.5	9.0	10.5	9.5	9.5	9.5										
chl	600	400	700	400	200	200	700	700										
ca	hvy	hvy	20	20	20	20	120	60										
LCM	1.0	2.0	4.0	5.5	5.0	6.0	8.0	8.0										

Date	3-23	3-24	3-25	3-26	3-27	3-28
Depth	5120	5120	5146	5160	5590	5818
WT	9.35	9.4	9.4	9.3	9.2	9.2
Vis	68	57	60	65	62	67
PV	21	17	18	18	18	19
YP	24	21	22	22	22	22
GS	17/49	14/49	15/45	16/47	16/46	17/49
NL	7.6	8.0	8.0	7.2	7.2	8.0
cake	1/32	1/32	1/32	1/32	1/32	1/32
pH	9.5	9.5	9.5	10.2	10.0	10.0
chl	700	700	700	1100	900	700
ca	40	40	40	20	40	40
LCM	9.0	9.0	9.0	8.8	9.0	8.0

OPERATOR Berexco LLC LOCATION 2296' FSL + 1090' FWL  
 LEASE TROY NO. 1-7 SEC 7 TWP. 29 S ANG. 40 W  
 ELEVATION 3328 KB RTD 5848 COUNTY Stanton STATE Kansas