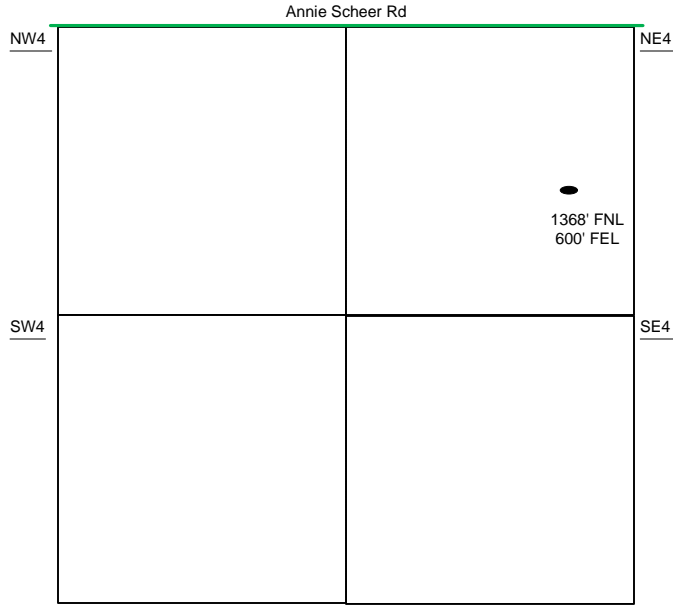
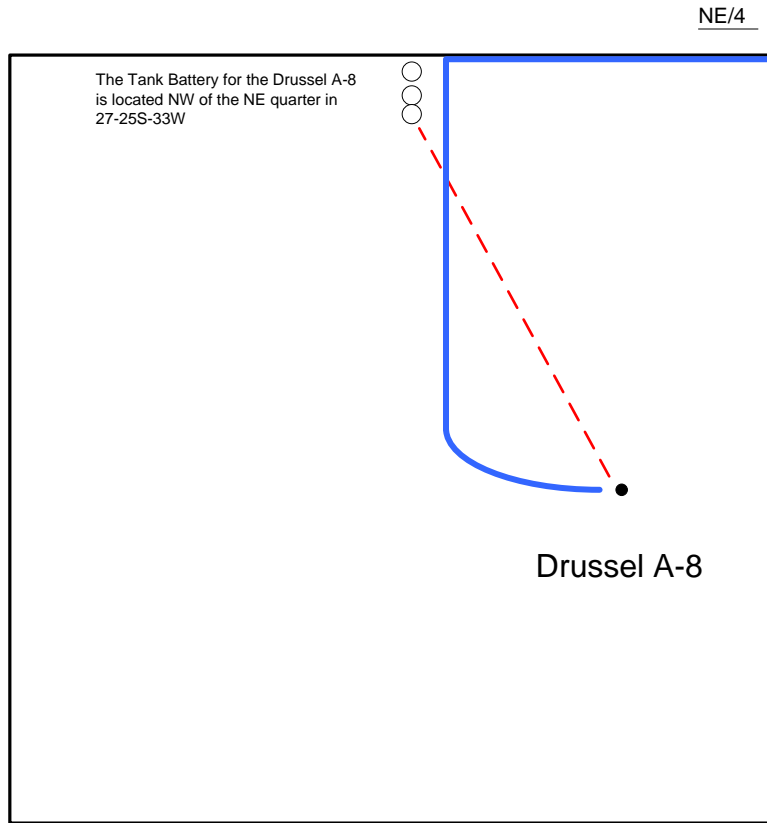


**Proposed Plan of Construction**  
 Drussell A-8  
 Sec 27 T25S-R33W  
 Finney County, KS



SEC 27 – T25S – R33W



Proposed Details of  
 NE/4 Sec 27 – T25S – R33W

Proposed Site Diagram  
 Drussell A-8  
 May 21<sup>st</sup>, 2015

Note-Drawing **Not** to Scale