



DRILL STEM TEST REPORT

Prepared For: **Landmark Resources**

1616 S. Voss Rd Ste 600
Houston , TX 77057-2641

ATTN: Terry McClead

Decker #5-9

9-17s-34w Scott,KS

Start Date: 2015.05.05 @ 05:26:12

End Date: 2015.05.05 @ 13:55:57

Job Ticket #: 61484 DST #: 1

Trilobite Testing, Inc
1515 Commerce Parkway Hays, KS 67601
ph: 785-625-4778 fax: 785-625-5620

Printed: 2015.05.08 @ 15:06:48



**TRILOBITE
TESTING, INC**

DRILL STEM TEST REPORT

Landmark Resources
1616 S. Voss Rd Ste 600
Houston, TX 77057-2641
ATTN: Terry McClead

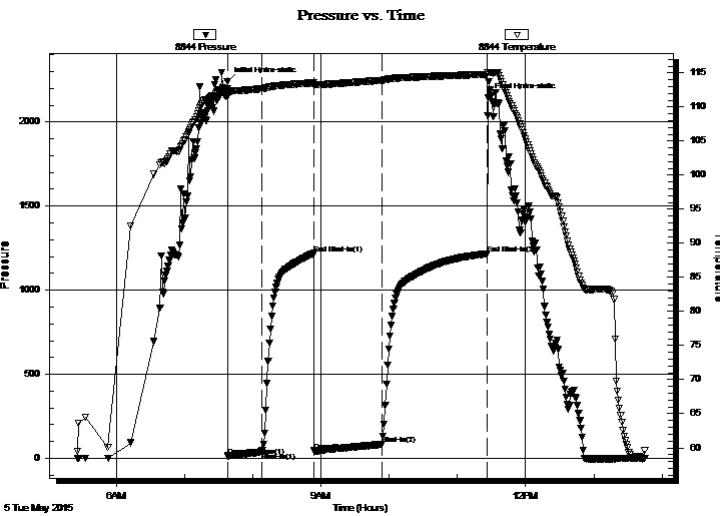
9-17s-34w Scott,KS
Decker #5-9
Job Ticket: 61484 **DST#: 1**
Test Start: 2015.05.05 @ 05:26:12

GENERAL INFORMATION:

Formation: **Altamont - Marmaton**
Deviated: No Whipstock: 0.00 ft (KB)
Time Tool Opened: 07:37:57
Time Test Ended: 13:55:57
Interval: **4474.00 ft (KB) To 4576.00 ft (KB) (TVD)**
Total Depth: 4576.00 ft (KB) (TVD)
Hole Diameter: 7.88 inches Hole Condition: Fair
Test Type: Conventional Bottom Hole (Initial)
Tester: Shane McBride
Unit No: 84
Reference Elevations: 3137.00 ft (KB)
3126.00 ft (CF)
KB to GR/CF: 11.00 ft

Serial #: 8844 Inside
Press@RunDepth: 84.83 psig @ 4475.00 ft (KB) Capacity: 8000.00 psig
Start Date: 2015.05.05 End Date: 2015.05.05 Last Calib.: 2015.05.05
Start Time: 05:26:12 End Time: 13:44:57 Time On Btm: 2015.05.05 @ 07:37:42
Time Off Btm: 2015.05.05 @ 11:27:27

TEST COMMENT: 3 1/4" in blow
No return
Weak surface blow in 8 min built to 4" in
No return



PRESSURE SUMMARY

Time (Min.)	Pressure (psig)	Temp (deg F)	Annotation
0	2239.76	112.68	Initial Hydro-static
1	13.58	111.59	Open To Flow (1)
31	38.50	112.68	Shut-In(1)
76	1217.79	113.55	End Shut-In(1)
77	44.93	113.23	Open To Flow (2)
136	84.83	113.90	Shut-In(2)
229	1217.24	114.78	End Shut-In(2)
230	2146.10	115.03	Final Hydro-static

Recovery

Length (ft)	Description	Volume (bbl)
30.00	c o 100%o	0.15
150.00	m c o 30% m 70%o	0.74

Gas Rates

	Choke (inches)	Pressure (psig)	Gas Rate (Mcf/d)



**TRILOBITE
TESTING, INC**

DRILL STEM TEST REPORT

TOOL DIAGRAM

Landmark Resources

9-17s-34w Scott,KS

1616 S. Voss Rd Ste 600
Houston, TX 77057-2641

Decker #5-9

Job Ticket: 61484

DST#: 1

ATTN: Terry McClead

Test Start: 2015.05.05 @ 05:26:12

Tool Information

Drill Pipe:	Length: 4201.00 ft	Diameter: 3.80 inches	Volume: 58.93 bbl	Tool Weight: 2500.00 lb
Heavy Wt. Pipe:	Length: 0.00 ft	Diameter: 0.00 inches	Volume: 0.00 bbl	Weight set on Packer: 25000.00 lb
Drill Collar:	Length: 280.00 ft	Diameter: 2.25 inches	Volume: 1.38 bbl	Weight to Pull Loose: 90000.00 lb
			<u>Total Volume: 60.31 bbl</u>	Tool Chased 0.00 ft
Drill Pipe Above KB:	30.00 ft			String Weight: Initial 74000.00 lb
Depth to Top Packer:	4474.00 ft			Final 75000.00 lb
Depth to Bottom Packer:	ft			
Interval between Packers:	102.00 ft			
Tool Length:	125.00 ft			
Number of Packers:	2	Diameter: 6.75 inches		

Tool Comments:

Tool Description

Tool Description	Length (ft)	Serial No.	Position	Depth (ft)	Accum. Lengths
Change Over Sub	1.00			4452.00	
Shut In Tool	5.00			4457.00	
Hydraulic tool	5.00			4462.00	
Safety Joint	3.00			4465.00	
Packer	5.00			4470.00	23.00 Bottom Of Top Packer
Packer	4.00			4474.00	
Stubb	1.00			4475.00	
Recorder	0.00	6771	Outside	4475.00	
Recorder	0.00	8844	Inside	4475.00	
Perforations	30.00			4505.00	
Change Over Sub	1.00			4506.00	
Drill Pipe	64.00			4570.00	
Change Over Sub	1.00			4571.00	
Bullnose	5.00			4576.00	102.00 Bottom Packers & Anchor

Total Tool Length: 125.00



**TRILOBITE
TESTING, INC**

DRILL STEM TEST REPORT

FLUID SUMMARY

Landmark Resources

9-17s-34w Scott,KS

1616 S. Voss Rd Ste 600
Houston, TX 77057-2641

Decker #5-9

Job Ticket: 61484

DST#: 1

ATTN: Terry McClead

Test Start: 2015.05.05 @ 05:26:12

Mud and Cushion Information

Mud Type: Gel Chem

Cushion Type:

Oil API:

26 deg API

Mud Weight: 9.00 lb/gal

Cushion Length:

ft

Water Salinity:

0 ppm

Viscosity: 61.00 sec/qt

Cushion Volume:

bbbl

Water Loss: 7.18 in³

Gas Cushion Type:

Resistivity: 0.00 ohm.m

Gas Cushion Pressure:

psig

Salinity: 4500.00 ppm

Filter Cake: 1.00 inches

Recovery Information

Recovery Table

Length ft	Description	Volume bbbl
30.00	c o 100%o	0.148
150.00	m c o 30% m 70%o	0.738

Total Length: 180.00 ft

Total Volume: 0.886 bbl

Num Fluid Samples: 0

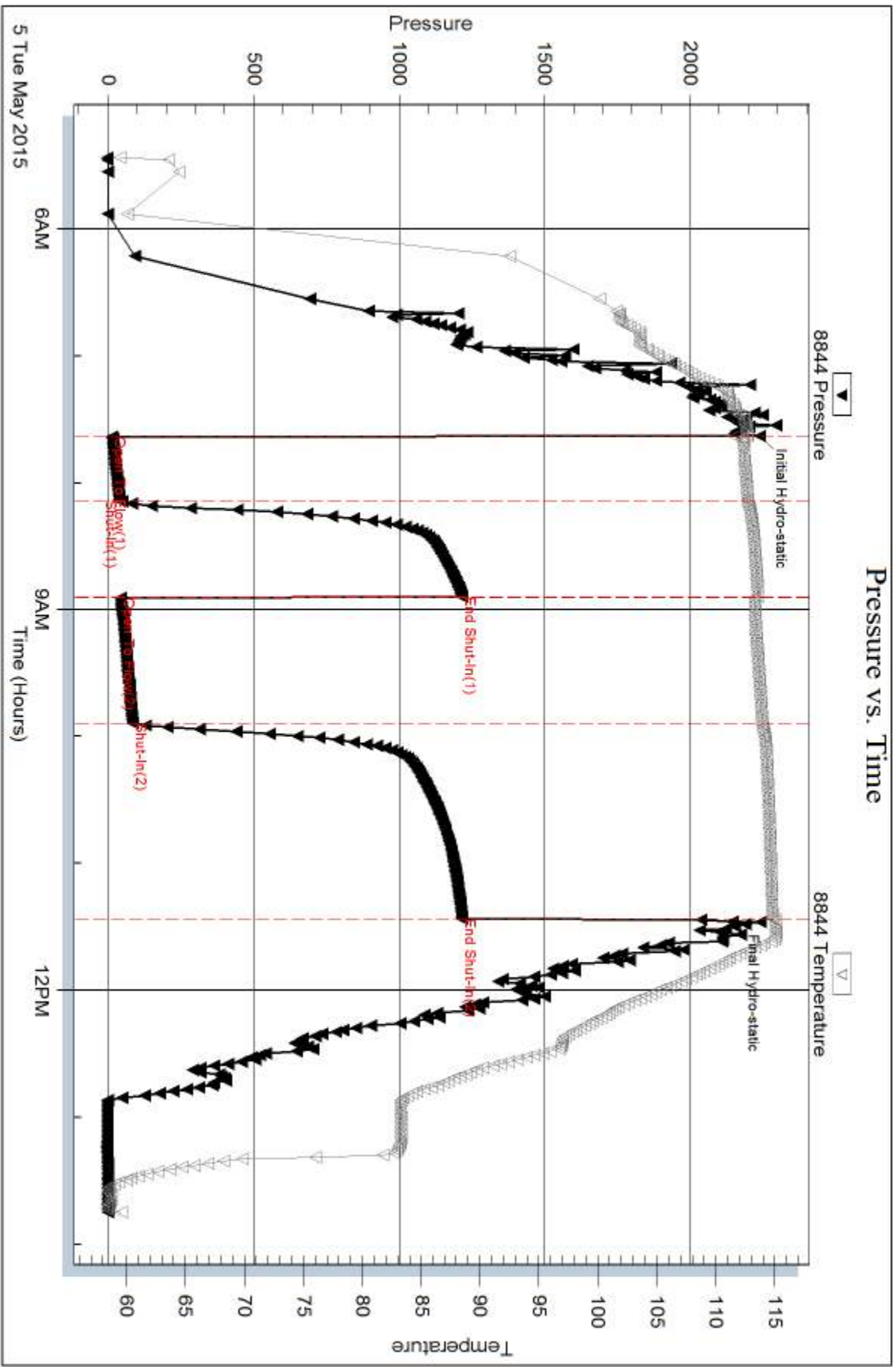
Num Gas Bombs: 0

Serial #:

Laboratory Name:

Laboratory Location:

Recovery Comments:

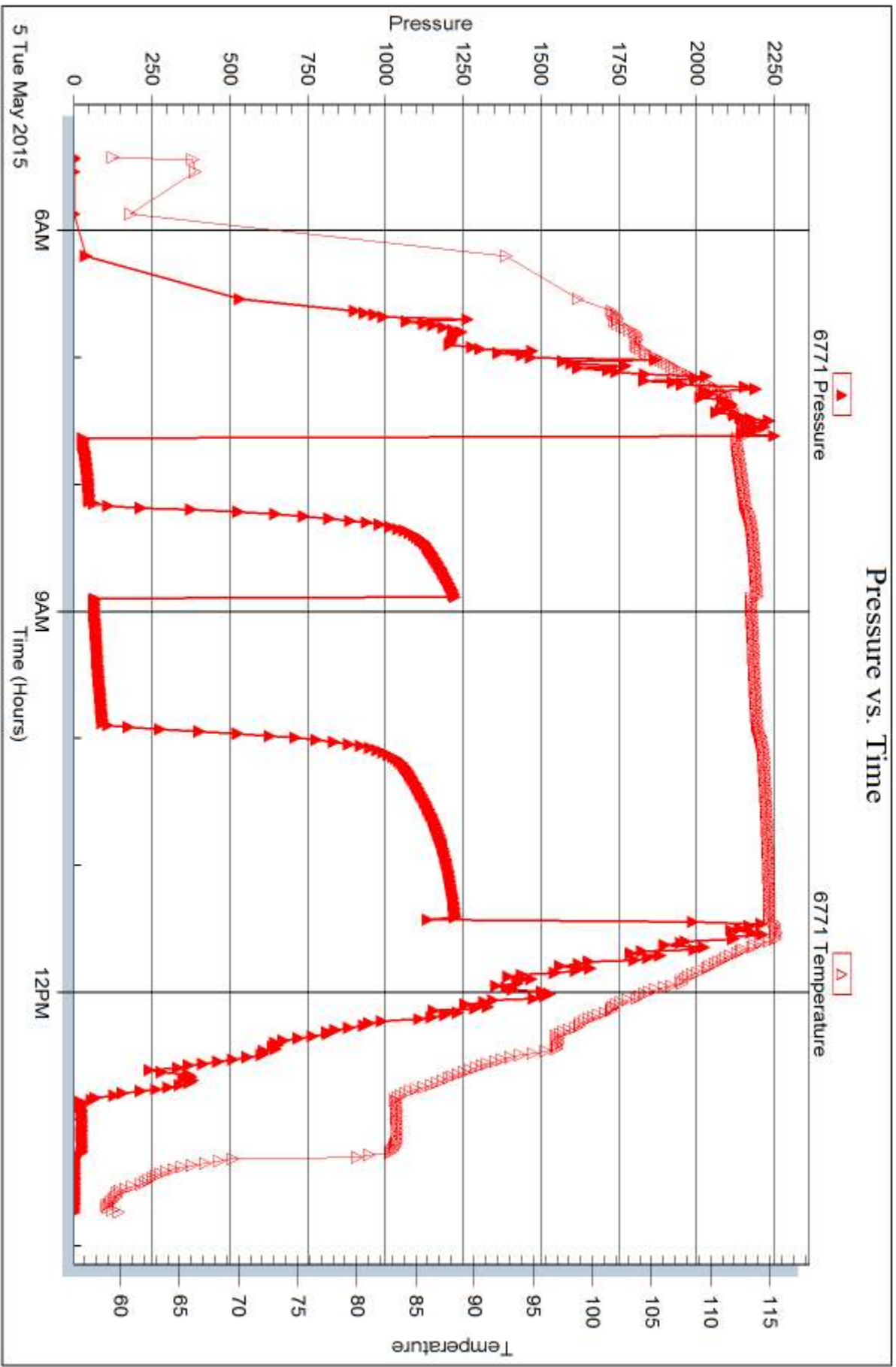


Serial #: 6771

Outside Landmark Resources

Decker #5-9

DST Test Number: 1



Trilobite Testing, Inc

Ref. No: 61484

Printed: 2015.05.08 @ 15:06:50



DRILL STEM TEST REPORT

Prepared For: **Landmark Resources**

1616 S. Voss Rd Ste 600
Houston , TX 77057-2641

ATTN: Terry McClead

Decker #5-9

9-17s-34w Scott,KS

Start Date: 2015.05.06 @ 14:40:30

End Date: 2015.05.06 @ 23:55:00

Job Ticket #: 61485 DST #: 2

Trilobite Testing, Inc
1515 Commerce Parkway Hays, KS 67601
ph: 785-625-4778 fax: 785-625-5620

Printed: 2015.05.08 @ 15:04:55



TRILOBITE TESTING, INC

DRILL STEM TEST REPORT

Landmark Resources
 1616 S. Voss Rd Ste 600
 Houston, TX 77057-2641
 ATTN: Terry McClead

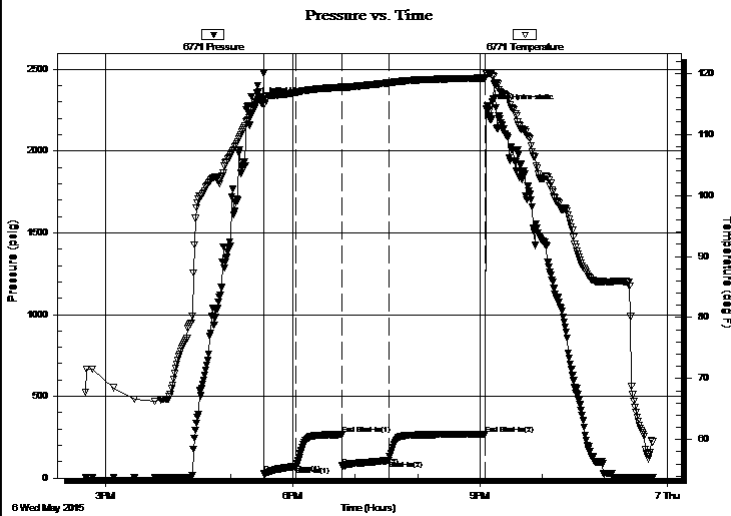
9-17s-34w Scott,KS
Decker #5-9
 Job Ticket: 61485 **DST#: 2**
 Test Start: 2015.05.06 @ 14:40:30

GENERAL INFORMATION:

Formation: **Johnson**
 Deviated: No Whipstock: 0.00 ft (KB)
 Time Tool Opened: 17:32:15
 Time Test Ended: 23:55:00
 Interval: **4729.00 ft (KB) To 4795.00 ft (KB) (TVD)**
 Total Depth: 4795.00 ft (KB) (TVD)
 Hole Diameter: 7.88 inches Hole Condition: Fair
 Test Type: Conventional Bottom Hole (Reset)
 Tester: Shane McBride
 Unit No: 84
 Reference Elevations: 3137.00 ft (KB)
 3126.00 ft (CF)
 KB to GR/CF: 11.00 ft

Serial #: 6771 Outside
 Press@RunDepth: 109.56 psig @ 4730.00 ft (KB) Capacity: 8000.00 psig
 Start Date: 2015.05.06 End Date: 2015.05.06 Last Calib.: 2015.05.06
 Start Time: 14:40:30 End Time: 23:46:00 Time On Btm: 2015.05.06 @ 17:31:00
 Time Off Btm: 2015.05.06 @ 21:06:00

TEST COMMENT: B.O.B. in 7 1/2 min.
 No return
 B.O.B. in 21 min.
 No return



PRESSURE SUMMARY

Time (Min.)	Pressure (psig)	Temp (deg F)	Annotation
0	2304.15	115.79	Initial Hydro-static
2	31.12	114.81	Open To Flow (1)
32	73.53	116.86	Shut-In(1)
76	266.12	117.73	End Shut-In(1)
77	73.79	117.67	Open To Flow (2)
121	109.56	118.41	Shut-In(2)
214	268.03	119.23	End Shut-In(2)
215	2259.38	119.88	Final Hydro-static

Recovery

Length (ft)	Description	Volume (bbl)
1.00	free oil 100%o	0.00
180.00	mud w/oil spots 100%m	0.89
0.00	480' gas in pipe	0.00

* Recovery from multiple tests

Gas Rates

	Choke (inches)	Pressure (psig)	Gas Rate (Mcf/d)



**TRILOBITE
TESTING, INC**

DRILL STEM TEST REPORT

TOOL DIAGRAM

Landmark Resources

9-17s-34w Scott,KS

1616 S. Voss Rd Ste 600
Houston, TX 77057-2641

Decker #5-9

Job Ticket: 61485

DST#: 2

ATTN: Terry McClead

Test Start: 2015.05.06 @ 14:40:30

Tool Information

Drill Pipe:	Length: 4452.00 ft	Diameter: 3.80 inches	Volume: 62.45 bbl	Tool Weight: 2500.00 lb
Heavy Wt. Pipe:	Length: 0.00 ft	Diameter: 0.00 inches	Volume: 0.00 bbl	Weight set on Packer: 25000.00 lb
Drill Collar:	Length: 280.00 ft	Diameter: 2.25 inches	Volume: 1.38 bbl	Weight to Pull Loose: 105000.0 lb
			<u>Total Volume: 63.83 bbl</u>	Tool Chased 0.00 ft
Drill Pipe Above KB:	26.00 ft			String Weight: Initial 76000.00 lb
Depth to Top Packer:	4729.00 ft			Final 76000.00 lb
Depth to Bottom Packer:	ft			
Interval between Packers:	66.00 ft			
Tool Length:	89.00 ft			
Number of Packers:	2	Diameter: 6.75 inches		

Tool Comments:

Tool Description

Tool Description	Length (ft)	Serial No.	Position	Depth (ft)	Accum. Lengths
Change Over Sub	1.00			4707.00	
Shut In Tool	5.00			4712.00	
Hydraulic tool	5.00			4717.00	
Safety Joint	3.00			4720.00	
Packer	5.00			4725.00	23.00 Bottom Of Top Packer
Packer	4.00			4729.00	
Stubb	1.00			4730.00	
Recorder	0.00	6771	Outside	4730.00	
Recorder	0.00	8844	Inside	4730.00	
Perforations	26.00			4756.00	
Change Over Sub	1.00			4757.00	
Drill Pipe	32.00			4789.00	
Change Over Sub	1.00			4790.00	
Bullnose	5.00			4795.00	66.00 Bottom Packers & Anchor

Total Tool Length: 89.00



**TRILOBITE
TESTING, INC**

DRILL STEM TEST REPORT

FLUID SUMMARY

Landmark Resources

9-17s-34w Scott,KS

1616 S. Voss Rd Ste 600
Houston , TX 77057-2641

Decker #5-9

Job Ticket: 61485

DST#: 2

ATTN: Terry McClead

Test Start: 2015.05.06 @ 14:40:30

Mud and Cushion Information

Mud Type: Gel Chem

Cushion Type:

Oil API:

0 deg API

Mud Weight: 9.00 lb/gal

Cushion Length:

ft

Water Salinity:

0 ppm

Viscosity: 51.00 sec/qt

Cushion Volume:

bbbl

Water Loss: 7.97 in³

Gas Cushion Type:

Resistivity: 0.00 ohm.m

Gas Cushion Pressure:

psig

Salinity: 5000.00 ppm

Filter Cake: 1.00 inches

Recovery Information

Recovery Table

Length ft	Description	Volume bbl
1.00	free oil 100%o	0.005
180.00	mud w /oil spots 100%m	0.885
0.00	480' gas in pipe	0.000

Total Length: 181.00 ft

Total Volume: 0.890 bbl

Num Fluid Samples: 0

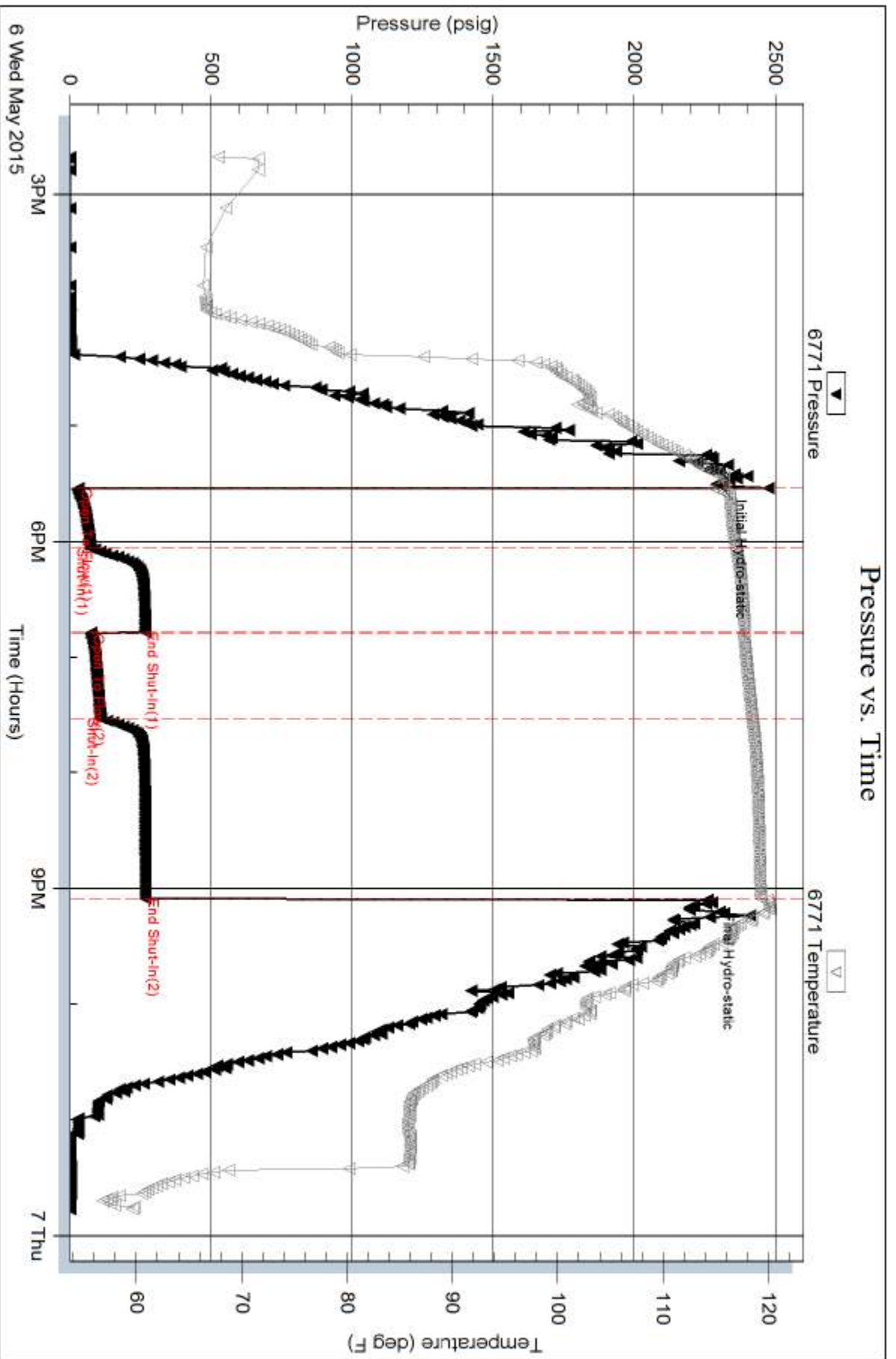
Num Gas Bombs: 0

Serial #:

Laboratory Name:

Laboratory Location:

Recovery Comments:



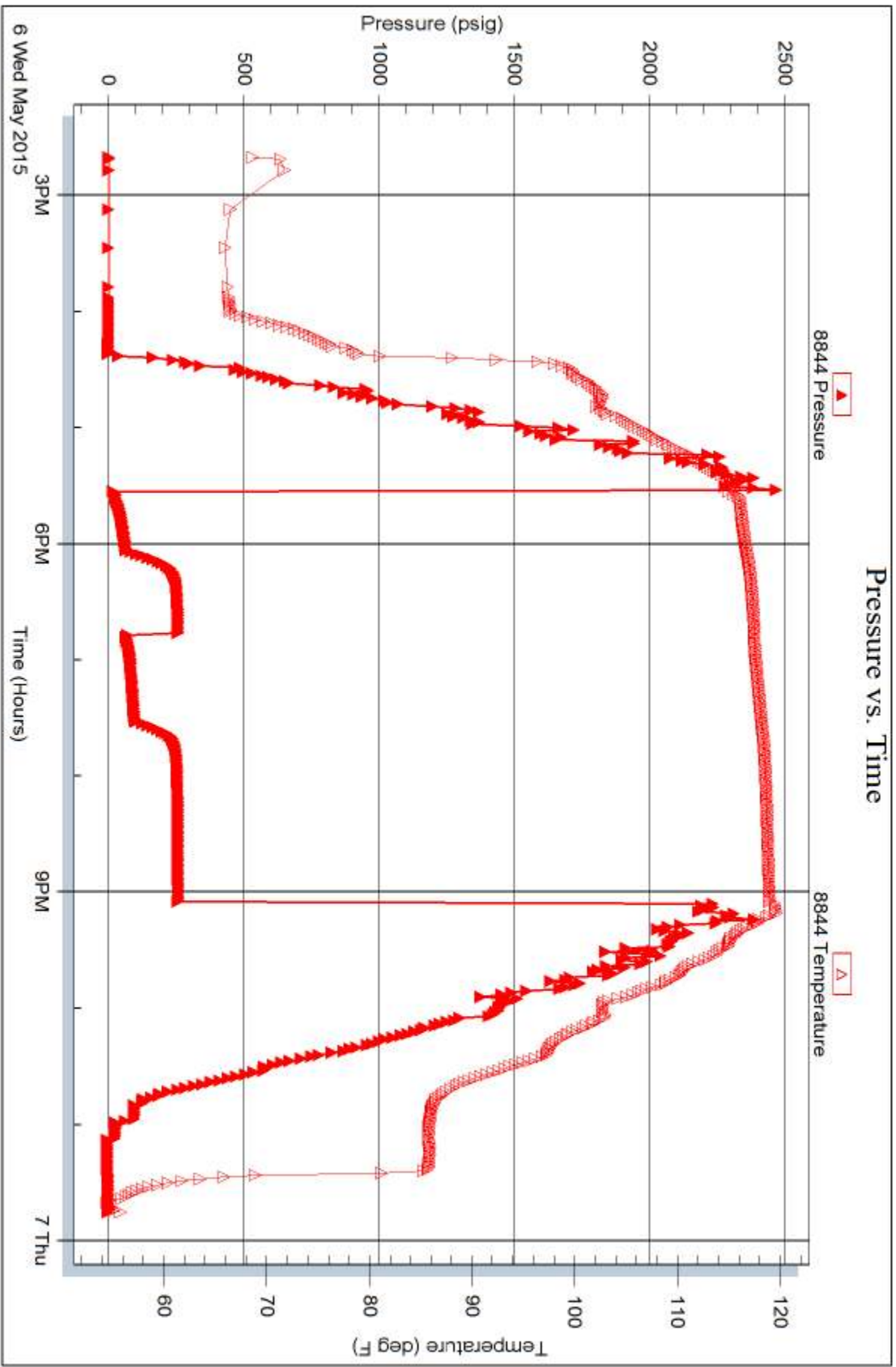
Serial #: 8844

Inside

Landmark Resources

Decker #5-9

DST Test Number: 2





TRILOBITE TESTING INC.

1515 Commerce Parkway • Hays, Kansas 67601

Test Ticket

NO. 61484

Well Name & No. Deckers # 5-9 Test No. #1 Date 5/6/15
 Company Landmark Resources Inc. Elevation 3137 KB 3126 GL
 Address 16615 Voss Rd Ste 1000 Houston, TX
 Co. Rep / Geo. Terry M. Wood Rig Murkin # 21
 Location: Sec. 9 Twp. 17S Rge. 34W Co. Scott State Ks

Interval Tested 4474 4576 Zone Tested Attainment - Maraton
 Anchor Length 102 Drill Pipe Run 4201 Mud Wt. 8.9
 Top Packer Depth 4409 Drill Collars Run 280' Vis 61
 Bottom Packer Depth 4474 Wt. Pipe Run — WL 7.2
 Total Depth 4576 Chlorides 4500 ppm System LCM #2

Blow Description 3 1/4" in blow
No. return
4 1/2" in blow
No. return.

Rec	Feet of	%gas	%oil	%water	%mud
<u>30'</u>	<u>CO</u>		<u>100</u>		
<u>150'</u>	<u>MCO</u>		<u>70</u>		<u>30</u>
Rec	Feet of	%gas	%oil	%water	%mud
Rec	Feet of	%gas	%oil	%water	%mud

Rec Total 180' BHT 115° Gravity 26 API RW — @ —° F Chlorides — ppm

- (A) Initial Hydrostatic 2239
- (B) First Initial Flow 13
- (C) First Final Flow 38
- (D) Initial Shut-In 1217
- (E) Second Initial Flow 44
- (F) Second Final Flow 84
- (G) Final Shut-In 1217
- (H) Final Hydrostatic 2146

- Test 1150
- Jars
- Safety Joint 75
- Circ Sub N/C
- Hourly Standby
- Mileage 40 RT 40
- Sampler
- Straddle
- Shale Packer 250
- Extra Packer
- Extra Recorder
- Day Standby
- Accessibility
- Sub Total 1515

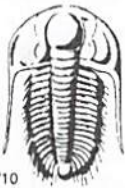
- T-On Location 03:00
- T-Started 05:25
- T-Open 07:37
- T-Pulled 11:22
- T-Out 13:55

- Comments
- Ruined Shale Packer
- Ruined Packer
- Extra Copies
- Sub Total 0
- Total 1515

Initial Open 30
 Initial Shut-In 43
 Final Flow 60
 Final Shut-In 90

Approved By Terry M. Wood Our Representative [Signature]

Trilobite Testing Inc. shall not be liable for damaged of any kind of the property or personnel of the one for whom a test is made, or for any loss suffered or sustained, directly or indirectly, through the use of its equipment, or its statements or opinion concerning the results of any test, tools lost or damaged in the hole shall be paid for at cost by the party for whom the test is made.



TRILOBITE TESTING INC.

1515 Commerce Parkway • Hays, Kansas 67601

Test Ticket

NO. 61485

Well Name & No. Deckers #5-9 Test No. #2 Date 3/6/15
 Company Landmark Resources Inc. Elevation 3137 KB 3120 GL
 Address 1616 S. Voss Rd #600 Houston, TX
 Co. Rep / Geo. Terry McLeod Rig Markin #21
 Location: Sec. 9 Twp. 17S Rge. 34W Co. Scott State TX

Interval Tested 4729 4795 Zone Tested Johnson
 Anchor Length 66 Drill Pipe Run 4452 Mud Wt. 9.4
 Top Packer Depth 4729 Drill Collars Run 280 Vis 51
 Bottom Packer Depth 4729 Wt. Pipe Run --- WL 8.0
 Total Depth 4795 Chlorides 3000 ppm System LCM #2

Blow Description B.O.B. in 7 1/2 min.
No return
B.O.B. in 21 min.
No return

Rec	Feet of	%gas	%oil	%water	%mud
<u>1'</u>	<u>Free Oil</u>	<u>100</u>	<u>---</u>	<u>---</u>	<u>---</u>
<u>180'</u>	<u>Mud w/oil spots</u>	<u>Spots</u>	<u>---</u>	<u>100</u>	<u>---</u>
Rec	Feet of	%gas	%oil	%water	%mud
Rec	Feet of	%gas	%oil	%water	%mud
Rec	Feet of	%gas	%oil	%water	%mud

Rec Total 181 BHT 120° Gravity --- API RW --- @ --- F Chlorides --- ppm

(A) Initial Hydrostatic 2304 Test 1150 T-On Location 13:45
 (B) First Initial Flow 31 Jars --- T-Started 14:40
 (C) First Final Flow 73 Safety Joint 75 T-Open 17:31
 (D) Initial Shut-In 266 Circ Sub N/C T-Pulled 21:01
 (E) Second Initial Flow 73 Hourly Standby --- T-Out 23:55
 (F) Second Final Flow 109 Mileage 40 RT 40 40 Comments Released & handed
 (G) Final Shut-In 268 Sampler --- Tool @ 10:00 am.
 (H) Final Hydrostatic 2259 Straddle --- 5/7/15
 Shale Packer 250 Ruined Shale Packer ---
 Extra Packer --- Ruined Packer ---

Initial Open 30 Extra Recorder --- Sub Total 0
 Initial Shut-In 45 Day Standby --- Total 1555
 Final Flow 45 Accessibility --- MP/DST Disc't ---
 Final Shut-In 90 Sub Total 1555

Approved By Terry McLeod Our Representative [Signature]

Trilobite Testing Inc. shall not be liable for damaged of any kind of the property or personnel of the one for whom a test is made, or for any loss suffered or sustained, directly or indirectly, through the use of its equipment, or its statements or opinion concerning the results of any test, tools lost or damaged in the hole shall be paid for at cost by the party for whom the test is made.