



DRILL STEM TEST REPORT

Prepared For: **Koron Investments Inc.**

P.O. Box 981
Hays, KS 67601

ATTN: Mark Downing

Baughner A #4-29

23-12s-21w-Trego,KS

Start Date: 2014.12.17 @ 08:04:00

End Date: 2014.12.17 @ 16:35:30

Job Ticket #: 60423 DST #: 3

Trilobite Testing, Inc

1515 Commerce Parkway Hays, KS 67601

ph: 785-625-4778 fax: 785-625-5620

Printed: 2014.12.19 @ 10:34:16

Koron Investments Inc. 23-12s-21w-Trego,KS Baughner A #4-29 DST # 3 Arbuckle 2014.12.17



TRILOBITE TESTING, INC

DRILL STEM TEST REPORT

Koron Investments Inc.

23-12s-21w-Trego,KS

P.O. Box 981
Hays, KS 67601

Baughner A #4-29

Job Ticket: 60423

DST#: 3

ATTN: Mark Downing

Test Start: 2014.12.17 @ 08:04:00

GENERAL INFORMATION:

Formation: **Arbuckle**

Deviated: No Whipstock: ft (KB)

Time Tool Opened: 10:43:30

Time Test Ended: 16:35:30

Test Type: Conventional Bottom Hole (Initial)

Tester: Shane Konzem

Unit No: 56

Interval: **3928.00 ft (KB) To 4020.00 ft (KB) (TVD)**

Total Depth: 4092.00 ft (KB) (TVD)

Hole Diameter: 7.88 inches Hole Condition: Poor

Reference Elevations: 2313.00 ft (KB)

2307.00 ft (CF)

KB to GR/CF: 6.00 ft

Serial #: 8159 Inside

Press@RunDepth: 127.86 psig @ 4013.08 ft (KB)

Start Date: 2014.12.17 End Date: 2014.12.17

Start Time: 08:04:00 End Time: 16:35:30

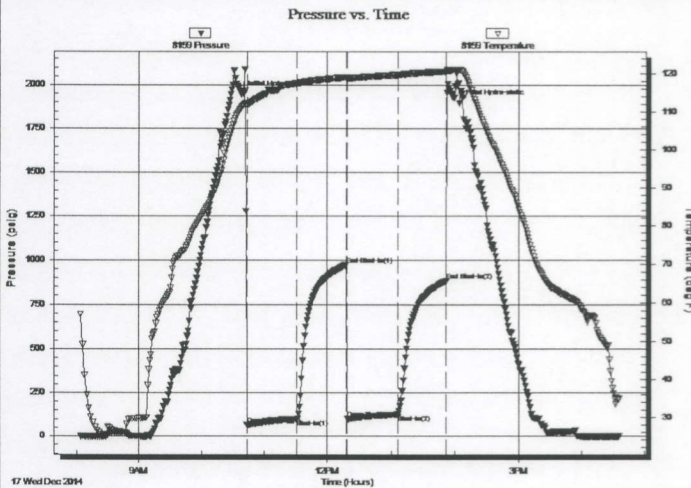
Capacity: 8000.00 psig

Last Calib.: 2014.12.17

Time On Btm: 2014.12.17 @ 10:38:30

Time Off Btm: 2014.12.17 @ 14:04:30

TEST COMMENT: IFP 45 Minutes. Fair blow built to 6" in diesel
ISI 45 Minutes. No blow back.
FFP 45 Minutes. Fair blow built to 4"
FSI 45 Minutes. No blow back.



PRESSURE SUMMARY

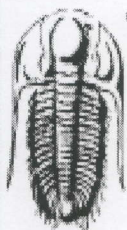
Time (Min.)	Pressure (psig)	Temp (deg F)	Annotation
0	1946.33	111.05	Initial Hydro-static
5	64.03	111.71	Open To Flow (1)
53	99.67	117.33	Shut-In(1)
99	970.47	118.95	End Shut-In(1)
100	102.99	118.72	Open To Flow (2)
148	127.86	119.59	Shut-In(2)
194	883.99	120.46	End Shut-In(2)
206	1897.37	120.91	Final Hydro-static

Recovery

Length (ft)	Description	Volume (bbl)
63.00	95% mud, 5% oil	0.31
63.00	90% Mud, 10% oil	0.31
30.00	40% Oil, 60% Mud	0.15
3.00	100% Clean Oil	0.01

Gas Rates

Choke (inches)	Pressure (psig)	Gas Rate (Mcf/d)



**TRILOBITE
TESTING, INC**

DRILL STEM TEST REPORT

Koron Investments Inc.

23-12s-21w-Trego,KS

P.O. Box 981
Hays, KS 67601

Baughner A #4-29

Job Ticket: 60423

DST#: 3

ATTN: Mark Downing

Test Start: 2014.12.17 @ 08:04:00

GENERAL INFORMATION:

Formation: **Arbuckle**

Deviated: No Whipstock: ft (KB)

Time Tool Opened: 10:43:30

Time Test Ended: 16:35:30

Test Type: Conventional Bottom Hole (Initial)

Tester: Shane Konzern

Unit No: 56

Interval: **3928.00 ft (KB) To 4020.00 ft (KB) (TVD)**

Total Depth: 4092.00 ft (KB) (TVD)

Hole Diameter: 7.88 inches Hole Condition: Poor

Reference Elevations: 2313.00 ft (KB)

2307.00 ft (CF)

KB to GR/CF: 6.00 ft

Serial #: 8524

Outside

Press@RunDepth: 885.50 psig @ 4014.08 ft (KB)

Capacity: 8000.00 psig

Start Date: 2014.12.17 End Date: 2014.12.17

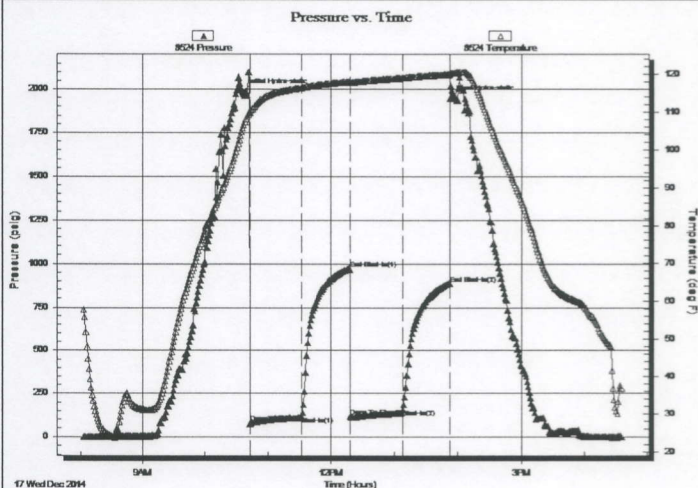
Last Calib.: 2014.12.17

Start Time: 08:03:01 End Time: 16:36:17

Time On Btm: 2014.12.17 @ 10:35:57

Time Off Btm: 2014.12.17 @ 13:52:34

TEST COMMENT: IFP 45 Minutes. Fair blow built to 6" in diesel
ISI 45 Minutes. No blow back.
FFP 45 Minutes. Fair blow built to 4"
FSI 45 Minutes. No blow back.



PRESSURE SUMMARY

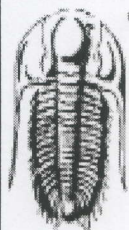
Time (Min.)	Pressure (psig)	Temp (deg F)	Annotation
0	1985.23	105.65	Initial Hydro-static
7	75.56	109.67	Open To Flow (1)
56	116.29	116.38	Shut-In(1)
102	968.76	118.05	End Shut-In(1)
103	117.51	117.68	Open To Flow (2)
152	156.52	119.00	Shut-In(2)
197	885.50	119.93	End Shut-In(2)
197	1946.46	120.31	Final Hydro-static

Recovery

Length (ft)	Description	Volume (bbl)
63.00	95% mud, 5% oil	0.31
63.00	90% Mud, 10% oil	0.31
30.00	40% Oil, 60% Mud	0.15
3.00	100% Clean Oil	0.01

Gas Rates

Choke (inches)	Pressure (psig)	Gas Rate (Mcf/d)



**TRILOBITE
TESTING, INC**

DRILL STEM TEST REPORT

TOOL DIAGRAM

Koron Investments Inc.

23-12s-21w-Trego, KS

P.O. Box 981
Hays, KS 67601

Baughner A #4-29

Job Ticket: 60423

DST#: 3

ATTN: Mark Downing

Test Start: 2014.12.17 @ 08:04:00

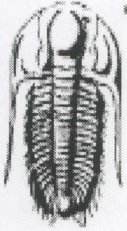
Tool Information

Drill Pipe:	Length: 3629.00 ft	Diameter: 3.80 inches	Volume: 50.91 bbl	Tool Weight: 2000.00 lb
Heavy Wt. Pipe:	Length: 310.11 ft	Diameter: 2.25 inches	Volume: 1.53 bbl	Weight set on Packer: 20000.00 lb
Drill Collar:	Length: 0.00 ft	Diameter: 0.00 inches	Volume: 0.00 bbl	Weight to Pull Loose: 72000.00 lb
			<u>Total Volume: 52.44 bbl</u>	Tool Chased 1.00 ft
Drill Pipe Above KB:	31.11 ft			String Weight: Initial 60000.00 lb
Depth to Top Packer:	3928.00 ft			Final 60000.00 lb
Depth to Bottom Packer:	ft			
Interval between Packers:	161.59 ft			
Tool Length:	181.59 ft			
Number of Packers:	2	Diameter: 6.75 inches		
Tool Comments:				

Tool Description

Tool Description	Length (ft)	Serial No.	Position	Depth (ft)	Accum. Lengths
Shut-In Tool	5.00			3913.00	
Hydraulic tool	5.00			3918.00	
Top Packer	5.00			3923.00	
Packer	5.00			3928.00	20.00 Bottom Of Top Packer
Perforations	5.00			3933.00	
Change Over Sub	0.75			3933.75	
Drill Pipe	62.58			3996.33	
Change Over Sub	0.75			3997.08	
Perforations	15.00			4012.08	
Recorder	1.00	8159	Inside	4013.08	
Recorder	1.00	8524	Outside	4014.08	
Blank Off Sub	0.75			4014.83	161.59 Tool Interval
Packer	5.00			4019.83	
Change Over Sub	0.75			4020.58	
Drill Pipe	31.26			4051.84	
Change Over Sub	0.75			4052.59	
Perforations	33.00			4085.59	
Recorder	1.00	6806	Below	4086.59	
Bull Plug	3.00			4089.59	1000180.59 Bottom Packers & Anchor

Total Tool Length: 181.59



**TRILOBITE
TESTING, INC**

DRILL STEM TEST REPORT

FLUID SUMMARY

Koron Investments Inc.

23-12s-21w-Trego, KS

P.O. Box 981
Hays, KS 67601

Baughner A #4-29

Job Ticket: 60423

DST#: 3

ATTN: Mark Downing

Test Start: 2014.12.17 @ 08:04:00

Mud and Cushion Information

Mud Type: Gel Chem
Mud Weight: 9.00 lb/gal
Viscosity: 53.00 sec/qt
Water Loss: 8.77 in³
Resistivity: ohm.m
Salinity: 3500.00 ppm
Filter Cake: 0.00 inches

Cushion Type:
Cushion Length: ft
Cushion Volume: bbl
Gas Cushion Type:
Gas Cushion Pressure: psig

Oil API: deg API
Water Salinity: ppm

Recovery Information

Recovery Table

Length ft	Description	Volume bbl
63.00	95% mud, 5% oil	0.310
63.00	90% Mud, 10% oil	0.310
30.00	40% Oil, 60% Mud	0.148
3.00	100% Clean Oil	0.015

Total Length: 159.00 ft Total Volume: 0.783 bbl

Num Fluid Samples: 0

Num Gas Bombs: 0

Serial #:

Laboratory Name:

Laboratory Location:

Recovery Comments:

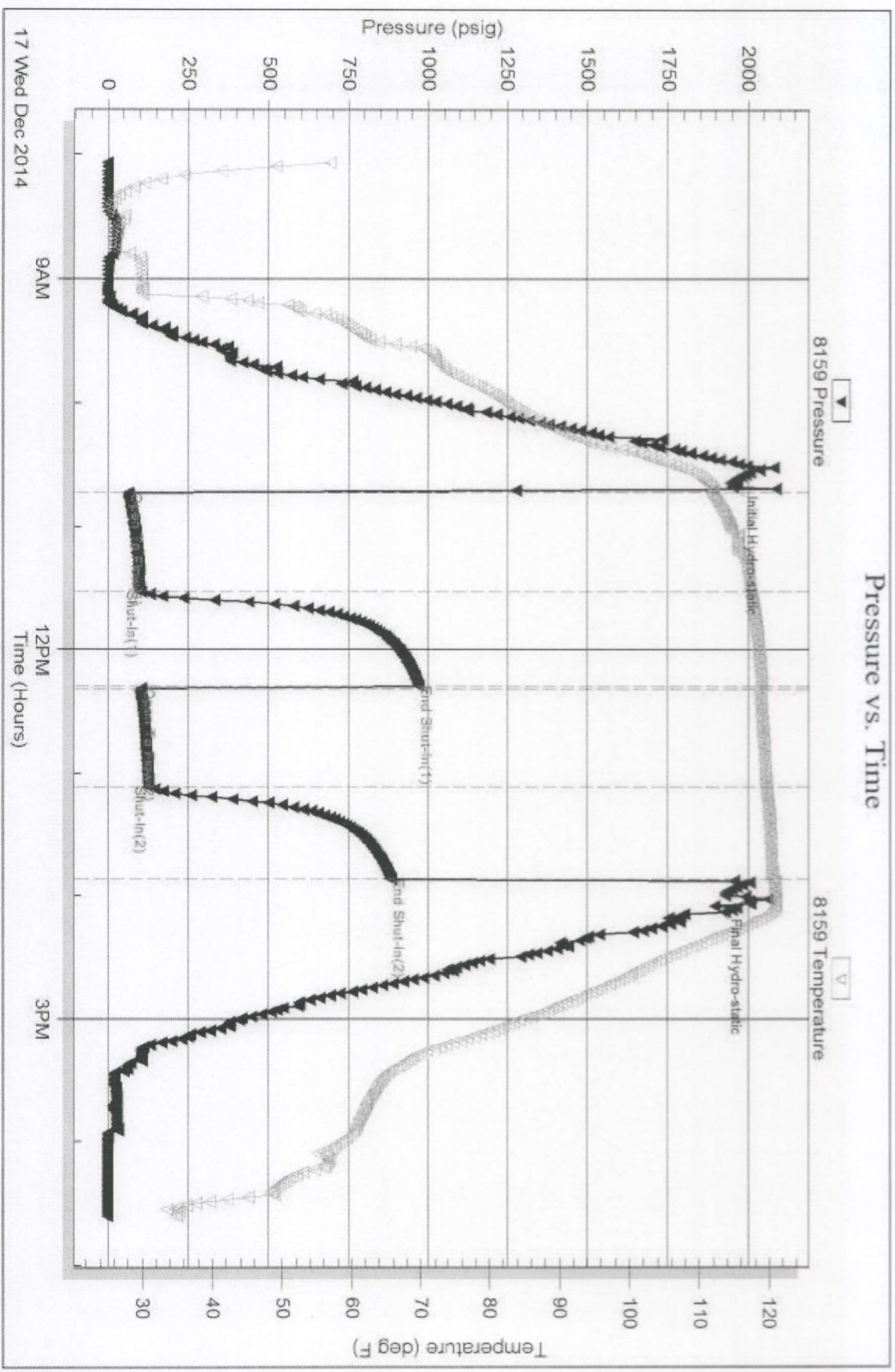
Serial #: 8159

Inside

Karon Investments Inc.

Baughner A #4-29

DST Test Number: 3



Trouble Testing, Inc

Ref. No: 60423

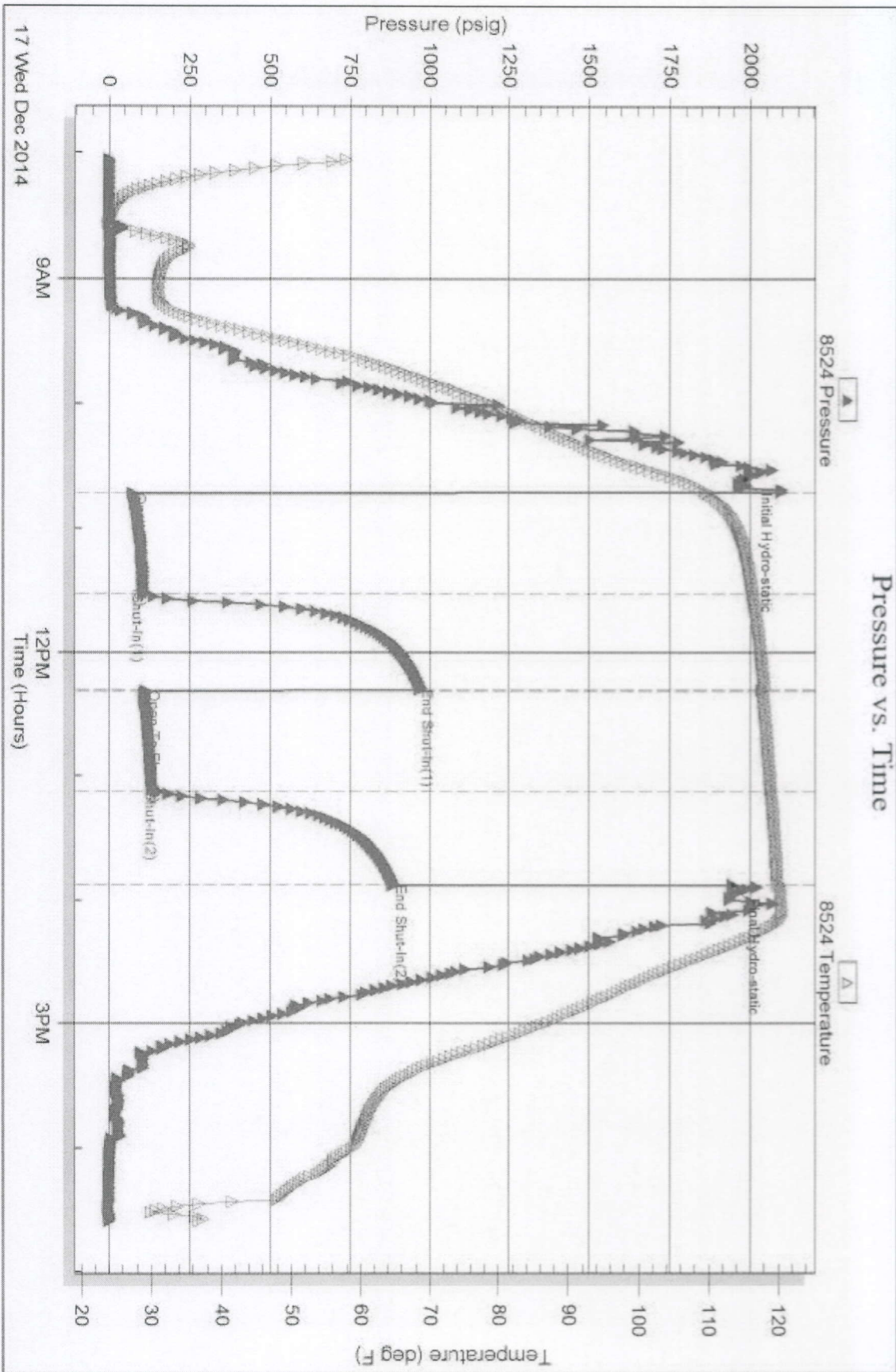
Printed: 2014.12.19 @ 10:34:17

Serial #: 8524

Outside Koron Investments Inc.

Baugher A. #4-29

DST Test Number: 3

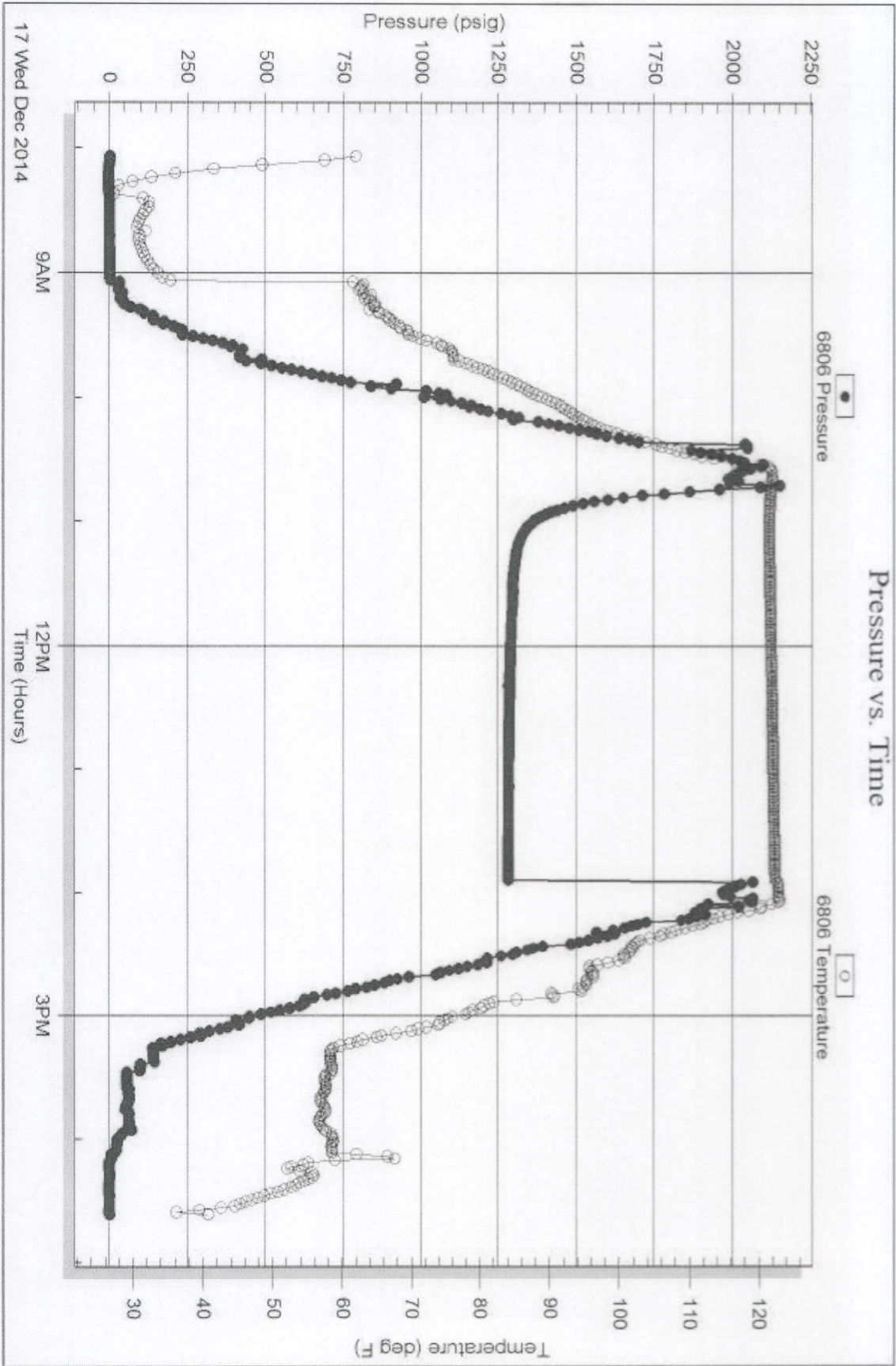


Serial #: 6806

Below (Stratkin) Investments Inc.

Baughner A #4-29

DST Test Number: 3



Tribble Testing, Inc

Ref. No: 60423

Printed: 2014.12.19 @ 10:34:17



4/10

TRILOBITE TESTING INC.

1515 Commerce Parkway • Hays, Kansas 67601

Test Ticket

NO. 60421

Well Name & No. Baughen A # 4-29 Test No. 1 Date 12-15-14
 Company Koron Investments Inc Elevation 2313 KB 2307 GL
 Address P.O. Box 981 Hays KS 67601
 Co. Rep / Geo. Mark Rig Discovery Rig # 2
 Location: Sec. 23 Twp. 12 S Rge. 21 W Co. Trego State KS

Interval Tested 3730 - 3821 Zone Tested Lansing H-K
 Anchor Length 91' Drill Pipe Run 3411 Mud Wt. 9.1
 Top Packer Depth 3725 Drill Collars Run 0 Vis 59
 Bottom Packer Depth 3730 Wt. Pipe Run 310.11 WL 8.4
 Total Depth 3821 Chlorides 3500 ppm System LCM 2#
 Blow Description 1st open - weak blow built to 1 1/2 inches. 1st shut in - No blow back. 2nd open - weak blow built to 2 inches. 2nd shut in - No blow back.

Rec	Feet of	%gas	%oil	%water	%mud
<u>40</u>	<u>oil cut watery mud</u>	<u>2.5</u>	<u>2.5</u>	<u>95</u>	<u>95</u>
Rec	Feet of	%gas	%oil	%water	%mud
Rec	Feet of	%gas	%oil	%water	%mud
Rec	Feet of	%gas	%oil	%water	%mud
Rec	Feet of	%gas	%oil	%water	%mud

Rec Total 40 BHT 104 Gravity \ API RW \ @ \ °F Chlorides \ ppm
 (A) Initial Hydrostatic 1848 Test 1150 T-On Location 1300
 (B) First Initial Flow 61 Jars \ T-Started 1430
 (C) First Final Flow 67 Safety Joint \ T-Open 1700
 (D) Initial Shut-In 366 Circ Sub \ T-Pulled 1915
 (E) Second Initial Flow 70 Hourly Standby \ T-Out 2045
 (F) Second Final Flow 76 Mileage 50 77.50 Comments \
 (G) Final Shut-In 251 Sampler \
 (H) Final Hydrostatic 1798 Straddle \ Ruined Shale Packer \
 Shale Packer \ Ruined Packer \
 Extra Packer \ Extra Copies \
 Initial Open 30 Extra Recorder \ Sub Total 0
 Initial Shut-In 30 Day Standby \ Total 1227.50
 Final Flow 30 Accessibility \ MP/DST Disc't \
 Final Shut-In 30 Sub Total 1227.50

Approved By _____ Our Representative Shoe Kifer
 Trilobite Testing Inc. shall not be liable for damaged of any kind of the property or personnel of the one for whom a test is made, or for any loss suffered or sustained, directly or indirectly, through the use of its equipment, or its statements or opinion concerning the results of any test, tools lost or damaged in the hole shall be paid for at cost by the party for whom the test is made.



TRILOBITE TESTING INC.

1515 Commerce Parkway • Hays, Kansas 67601

Test Ticket

NO. 60422

Well Name & No. Baughner A #4-29 Test No. 2 Date 12-16-14
 Company Koron Investments Inc Elevation 2313 KB 2307 GL
 Address P.O. Box 981 Hays KS 67601
 Co. Rep / Geo. Mark Rig Discovery Rig #2
 Location: Sec. 23 Twp. 12S Rge. 21W Co. Trego State KS

Interval Tested 3929 - 4029 Zone Tested Arbuckle
 Anchor Length 600' Drill Pipe Run 3629 Mud Wt. 9.4
 Top Packer Depth 3924 Drill Collars Run 0 Vis 53
 Bottom Packer Depth 3929 Wt. Pipe Run 310.11 WL 8.8
 Total Depth 4092 Chlorides 3500 ppm System LCM 1#

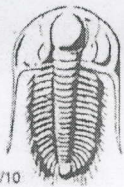
Blow Description 1st Open - Good blow built to Bottom of 5 gallon bucket in 6 minutes 30 seconds. 1st Shut In - No blow back. 2nd Open - Bottom of Bucket in 9 minutes. 2nd Shut In - No blow back.

Rec	Feet of	%gas	%oil	%water	%mud
<u>2</u>	<u>clean oil</u>	<u>100</u>	<u>0</u>	<u>0</u>	<u>0</u>
<u>63</u>	<u>oil cut mud</u>	<u>40</u>	<u>0</u>	<u>60</u>	<u>0</u>
<u>189</u>	<u>oil cut mud</u>	<u>5</u>	<u>0</u>	<u>95</u>	<u>0</u>
<u>567</u>	<u>oil cut muddy water</u>	<u>0</u>	<u>0</u>	<u>0</u>	<u>0</u>
<u>189</u>	<u>muddy water</u>	<u>0</u>	<u>60</u>	<u>40</u>	<u>0</u>

Rec Total 1008 BHT 125 Gravity 1250 API RW .22@ 40 F Chlorides 34000 ppm

(A) Initial Hydrostatic 1953 Test 1250 T-On Location 2130
 (B) First Initial Flow 85 Jars _____ T-Started 0000
 (C) First Final Flow 297 Safety Joint _____ T-Open 0130
 (D) Initial Shut-In 1237 Circ Sub _____ T-Pulled 0400
 (E) Second Initial Flow 304 Hourly Standby _____ T-Out 0700
 (F) Second Final Flow 432 Mileage 50 77.50 Comments _____
 (G) Final Shut-In 1240 Sampler _____
 (H) Final Hydrostatic 1918 Straddle 600 Ruined Shale Packer _____
 Shale Packer _____ Ruined Packer _____
 Extra Packer _____ Extra Copies _____
 Extra Recorder _____ Sub Total 0
 Day Standby _____ Total 1927.50
 Accessibility _____ MP/DST Disc't _____
 Sub Total 1927.50

Initial Open 30
 Initial Shut-In 45
 Final Flow 30
 Final Shut-In 45
 Approved By _____ Our Representative Shane Key
Trilobite Testing Inc. shall not be liable for damaged of any kind of the property or personnel of the one for whom a test is made, or for any loss suffered or sustained, directly or indirectly, through the use of its equipment, or its statements or opinion concerning the results of any test, tools lost or damaged in the hole shall be paid for at cost by the party for whom the test is made.



4/10

TRILOBITE TESTING INC.

1515 Commerce Parkway • Hays, Kansas 67601

Test Ticket

NO. 60423

Well Name & No. Bangher A #4-29 Test No. 3 Date 12-17-14
 Company Koron Investments, Inc. Elevation 2313 KB 2307 GL
 Address P.O. Box 981 Hays KS 67601
 Co. Rep / Geo. Mark Rig Discovery Rig #2
 Location: Sec. 23 Twp. 12s Rge. 21w Co. Trego State KS

Interval Tested 3928-4020 Zone Tested Arbuckle
 Anchor Length 92 Drill Pipe Run 3629 Mud Wt. 9.4
 Top Packer Depth 3923 Drill Collars Run 0 Vis 53
 Bottom Packer Depth 3928 Wt. Pipe Run 310.11 WL 8.8
 Total Depth 4092 Chlorides 3500 ppm System LCM 1#

Blow Description 1st Open - fair blow built to 6 inches into diesel. 1st Shut In - No blow back. 2nd open - blow built to 4 inches into diesel. 2nd Shut In - No blow back.

Rec	Feet of	%gas	%oil	%water	%mud
<u>3</u>	<u>clean oil</u>				
<u>30</u>	<u>oil cut mud</u>		<u>40%</u>		<u>60%</u>
<u>63</u>	<u>oil cut mud</u>		<u>10%</u>		<u>90%</u>
<u>63</u>	<u>oil cut mud</u>		<u>5%</u>		<u>95%</u>
<u> </u>	<u> </u>				

Rec Total 159 BHT 120 Gravity 1 API RW 1 @ 1 °F Chlorides 1 ppm

(A) Initial Hydrostatic 1946 Test 1250 T-On Location 2130 - 12-16-14
 (B) First Initial Flow 64 Jars _____ T-Started 0900
 (C) First Final Flow 99 Safety Joint _____ T-Open 10.45
 (D) Initial Shut-In 970 Circ Sub _____ T-Pulled 13:50
 (E) Second Initial Flow 102 Hourly Standby _____ T-Out 1600
 (F) Second Final Flow 127 Mileage 50 77.50 Comments _____
 (G) Final Shut-In 883 Sampler _____
 (H) Final Hydrostatic 1897 Straddle 600 Ruined Shale Packer _____
 Shale Packer _____ Ruined Packer _____
 Extra Packer _____ Extra Copies _____
 Initial Open 45 Extra Recorder _____ Sub Total 0
 Initial Shut-In 45 Day Standby _____ Total 1927.50
 Final Flow 45 Accessibility _____ MP/DST Disc't _____
 Final Shut-In 45 _____
 Sub Total 1927.50

Approved By _____

Our Representative Mark [Signature]

Trilobite Testing Inc. shall not be liable for damaged of any kind of the property or personnel of the one for whom a test is made, or for any loss suffered or sustained, directly or indirectly, through the use of its equipment, or its statements or opinion concerning the results of any test, tools lost or damaged in the hole shall be paid for at cost by the party for whom the test is made.