



Pioneer Energy Services

Dual Compensated Porosity Log

15-051-26773-00-00

Company **Pioneer Resources**
 Well **Schmeidler-Amrein Unit #1**
 Field **Crathorne East**
 County **Ellis** State **Kansas**

Location **SE SE SW SW
 90' FSL & 1065' FWL**
 Sec: **21** Twp: **12S** Rge: **19W**

Other Services
 DIL
 MEL

Permanent Datum **Ground Level** Elevation **2159**
 Log Measured From **Kelly Bushing** 5 Ft. Above Perm. Datum
 Drilling Measured From **Kelly Bushing**

K.B. **2164**
 D.F. **2159**
 G.L. **2159**

Date **4/28/2015**

Run Number **One**

Type Log **CNL / CDL**

Depth Driller **3882**

Depth Logger **3881**

Bottom Logged Interval **3860**

Top Logged Interval **3150**

Type Fluid In Hole **Chemical**

Salinity, PPM CL **5000**

Density **9.5**

Level **Full**

Max. Rec. Temp. F **115**

Operating Rig Time **3 Hours**

Equipment -- Location **91 Hays**

Recorded By **D. Schmidt**

Witnessed By **Janel Staab**

Borehole Record

Casing Record

Run No	Bit	From	To	Size	Wgt. 24#	From	To
1	12.25	00	217	8.625	24#	00	217
2	7.875	217	3882				

<<< Fold Here >>>

All interpretations are opinions based on inferences from electrical or other measurements and we cannot and do not guarantee the accuracy or correctness of any interpretation, and we shall not, except in the case of gross or willful negligence on our part, be liable or responsible for any loss, costs, damages, or expenses incurred or sustained by anyone resulting from any interpretation made by any of our officers, agents or employees. These interpretations are also subject to our general terms and conditions set out in our current Price Schedule.

Comments

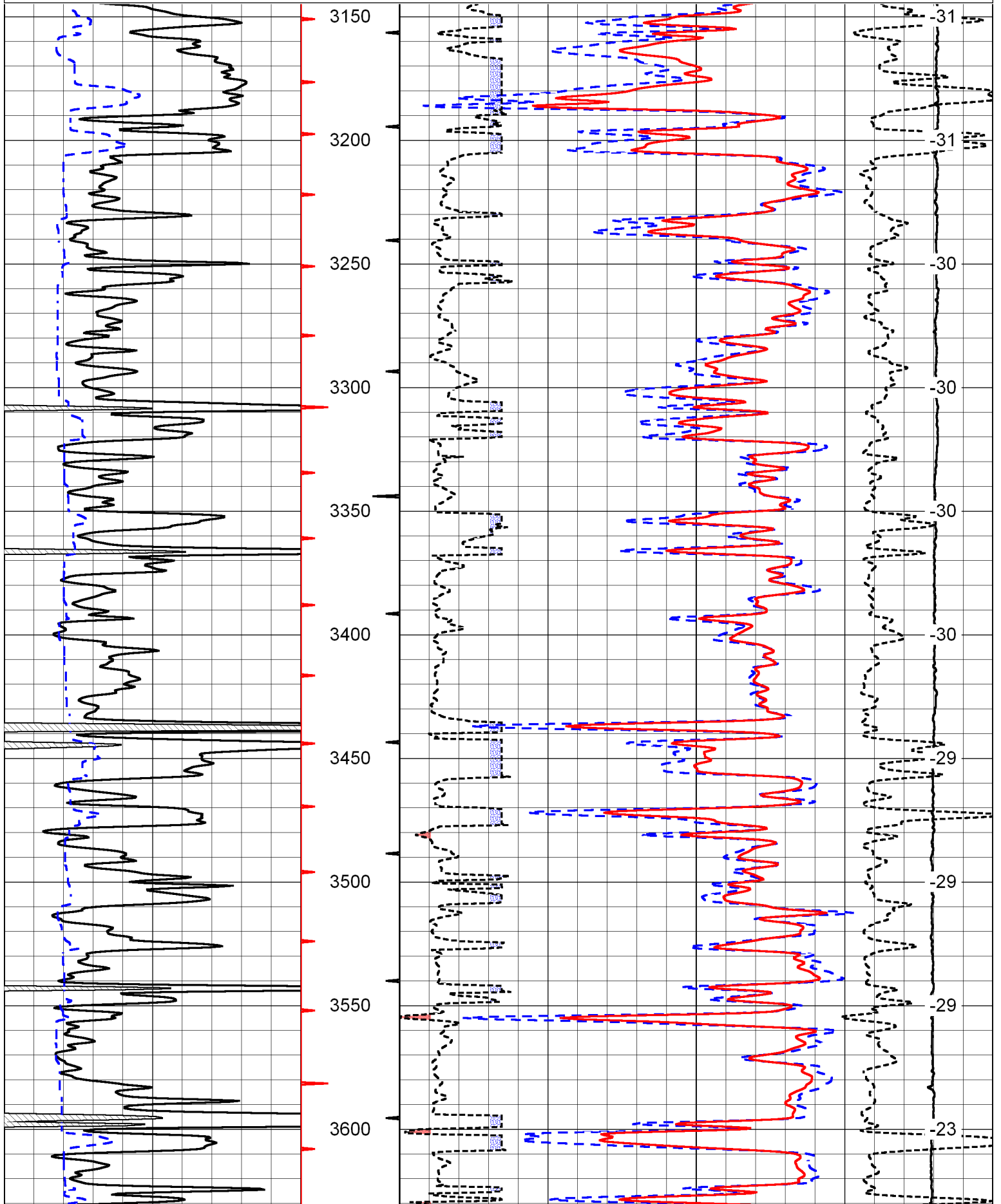
Thank you for using Pioneer Energy Services
 www.pioneerres.com
 785 625 3858
 Hays,
 West on I-70 to Yocemento Rd,
 4 1/2 North to Locust Grove, 3/4 West,
 North into

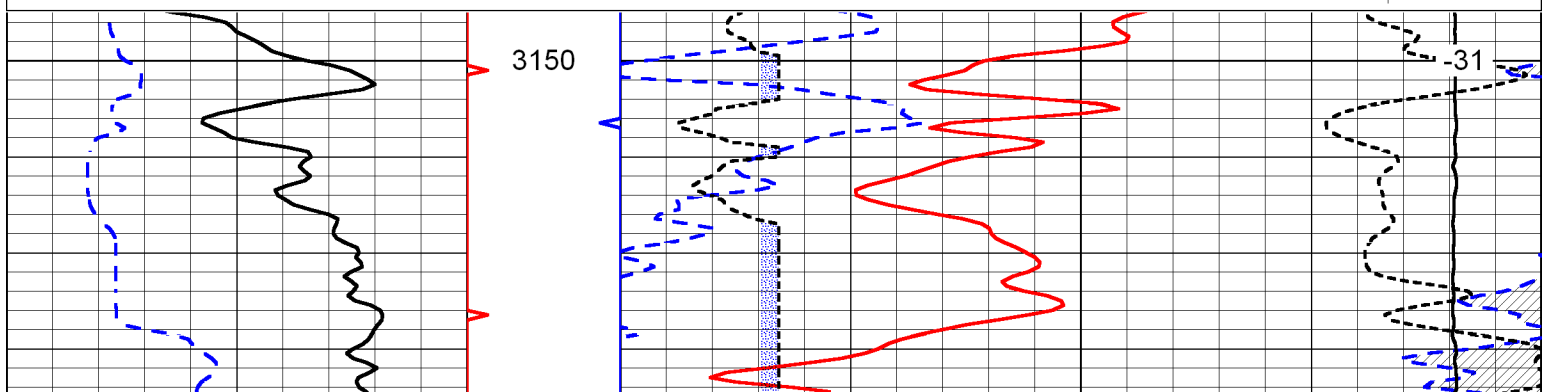
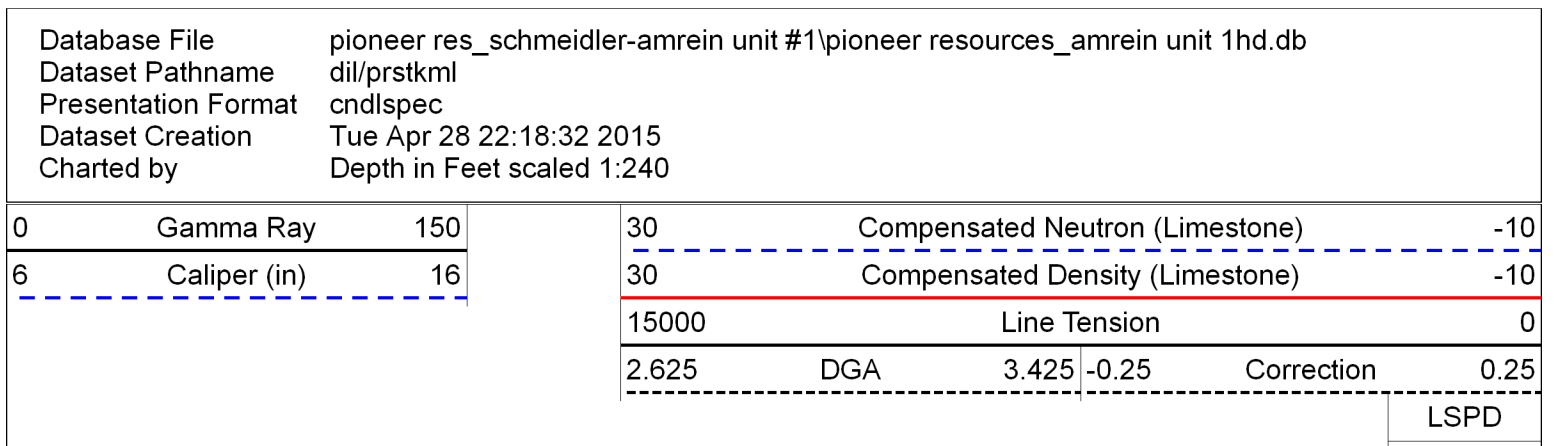
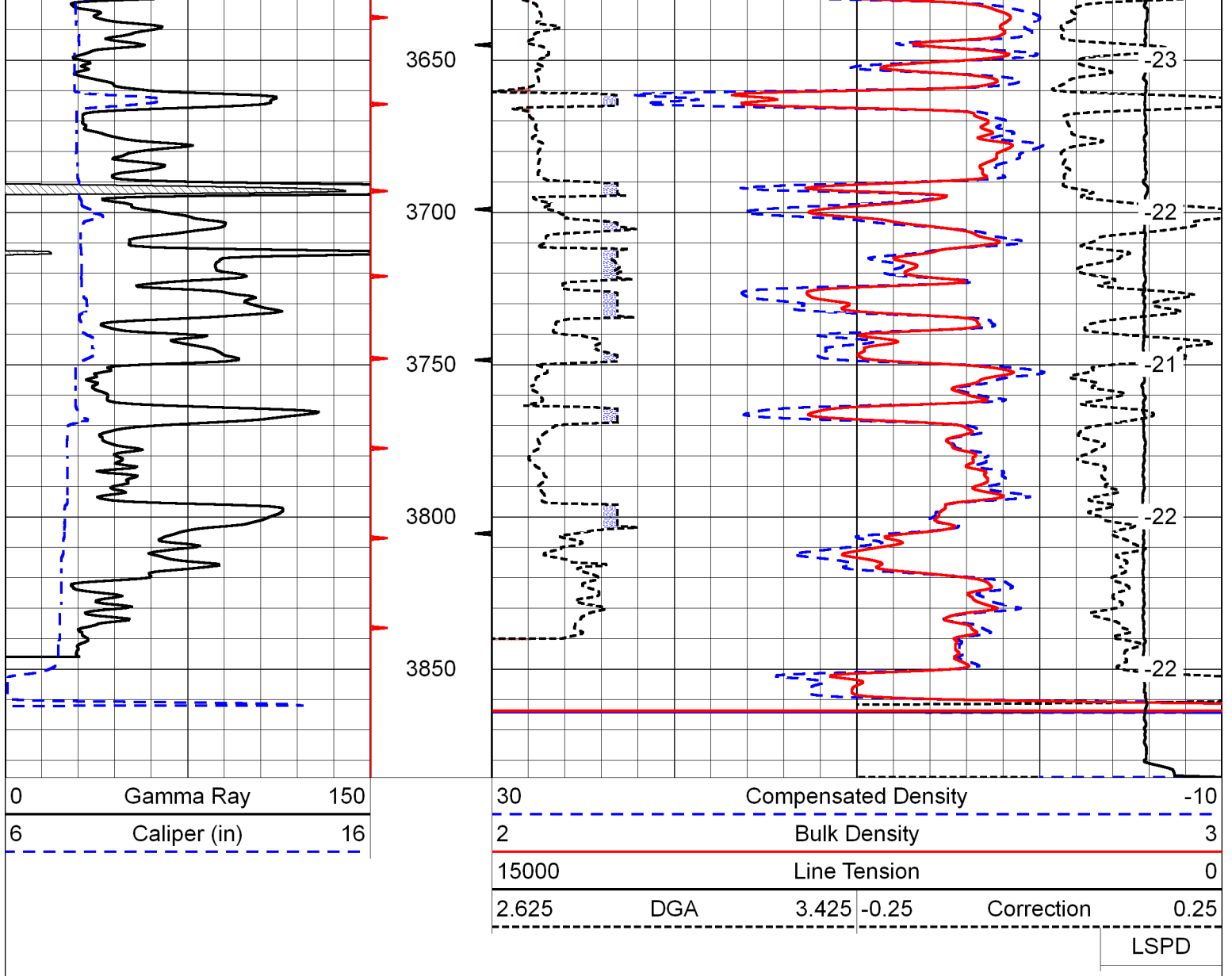
Database File **pioneer res_schmeidler-amrein unit #1\pioneer resources_amrein unit 1hd.db**
 Dataset Pathname **dil/prstkml**
 Presentation Format **cdl**
 Dataset Creation **Tue Apr 28 22:18:32 2015**
 Charted by **Depth in Feet scaled 1:600**

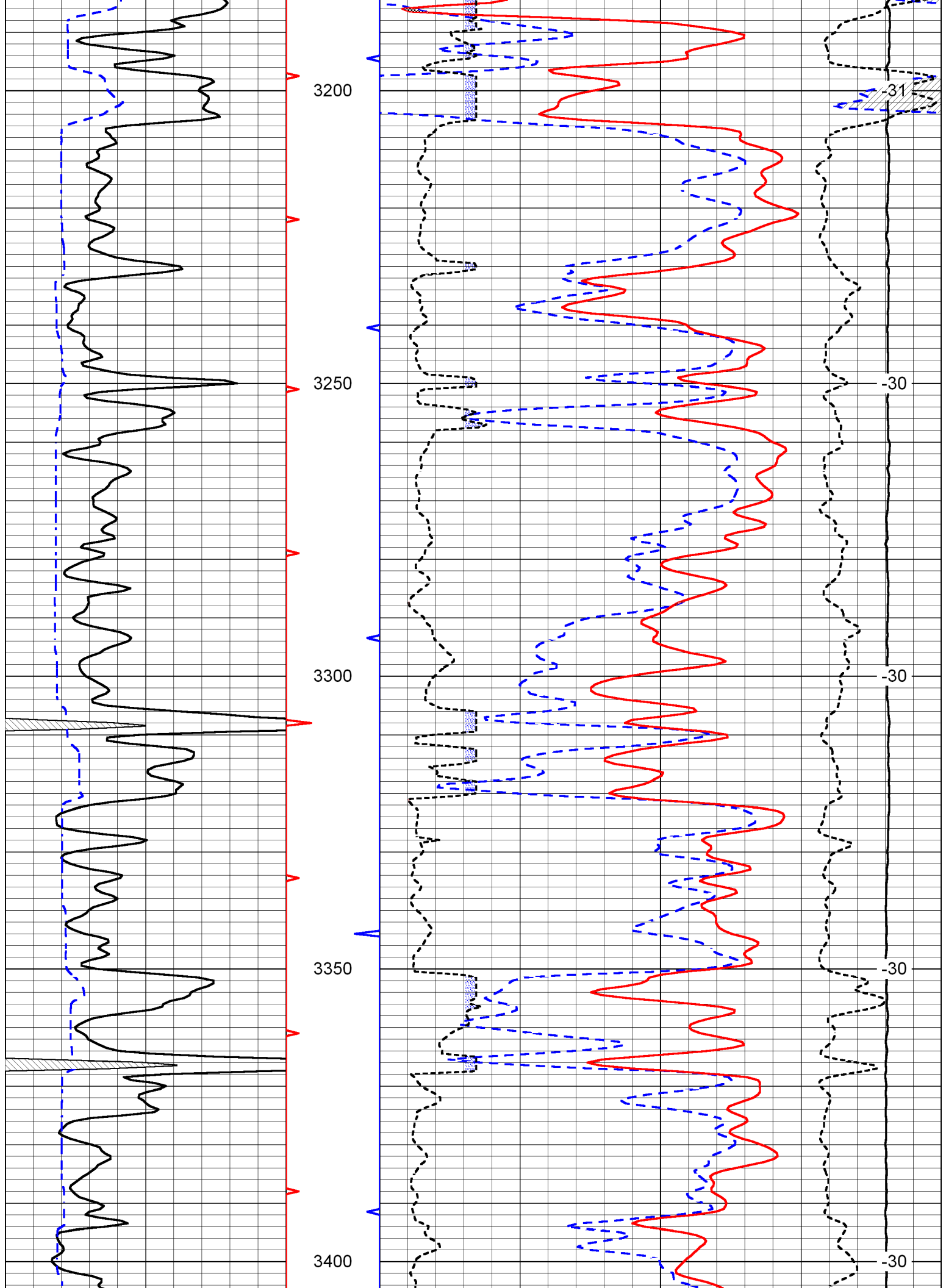
0	Gamma Ray	150
6	Caliper (in)	16

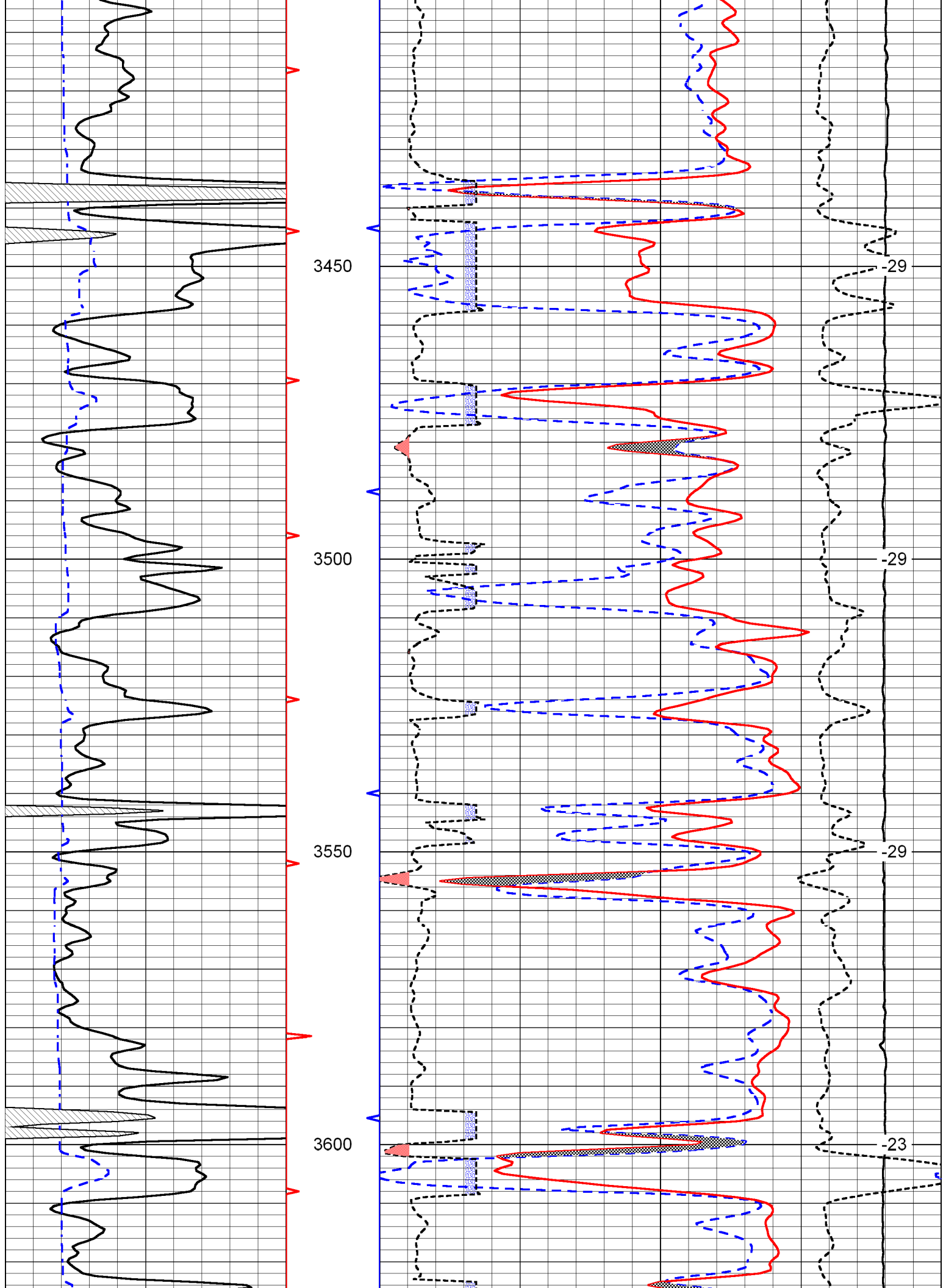
30	Compensated Density		-10
2	Bulk Density		3
15000	Line Tension		0
2.625	DGA	3.425 -0.25	Correction 0.25

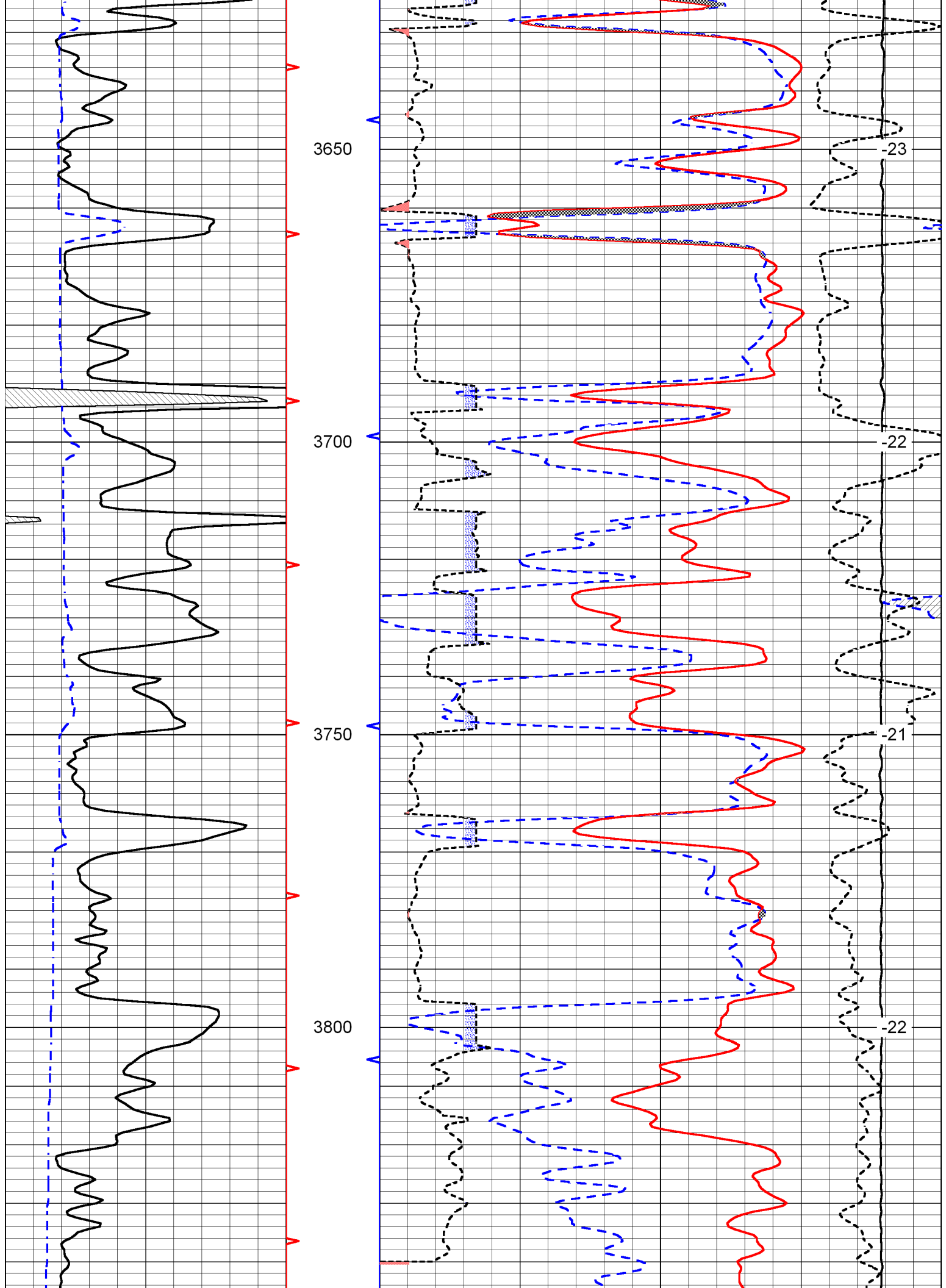
LSPD

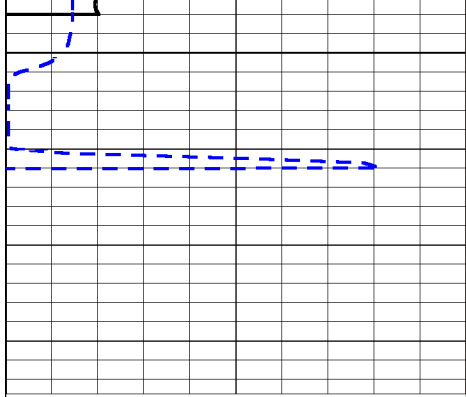




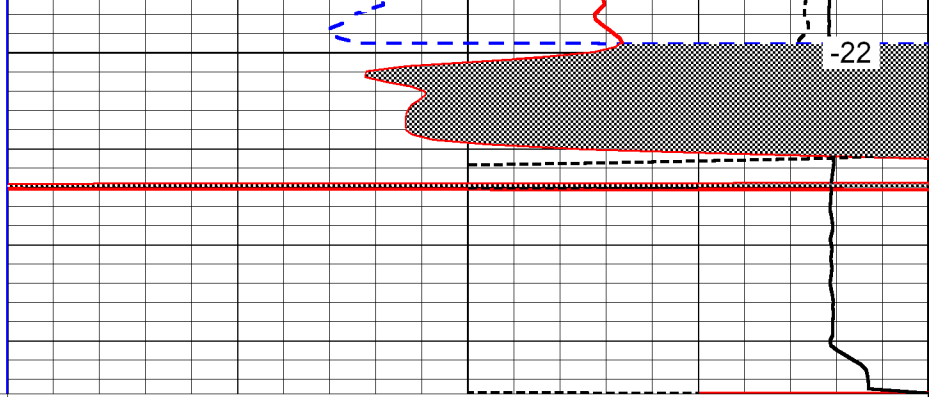








3850



0	Gamma Ray	150
6	Caliper (in)	16

30	Compensated Neutron (Limestone)	-10
30	Compensated Density (Limestone)	-10

15000	Line Tension	0
-------	--------------	---

2.625	DGA	3.425	-0.25	Correction	0.25
-------	-----	-------	-------	------------	------

LSPD