

ADVANTAGE ELEVATIONS

OIL FIELD SURVEYORS

BOX 8604 - PRATT, KS 67124
(620) 672-6491

57152
INVOICE NO.

VINCENT OIL CORPORATION
OPERATOR

1-28
~~2-28~~
NO.

FRINK - Brown
FARM

FORD
COUNTY

28 28s 23w
S T R

760' FSL & 2610' FWL of Sec.
LOCATION

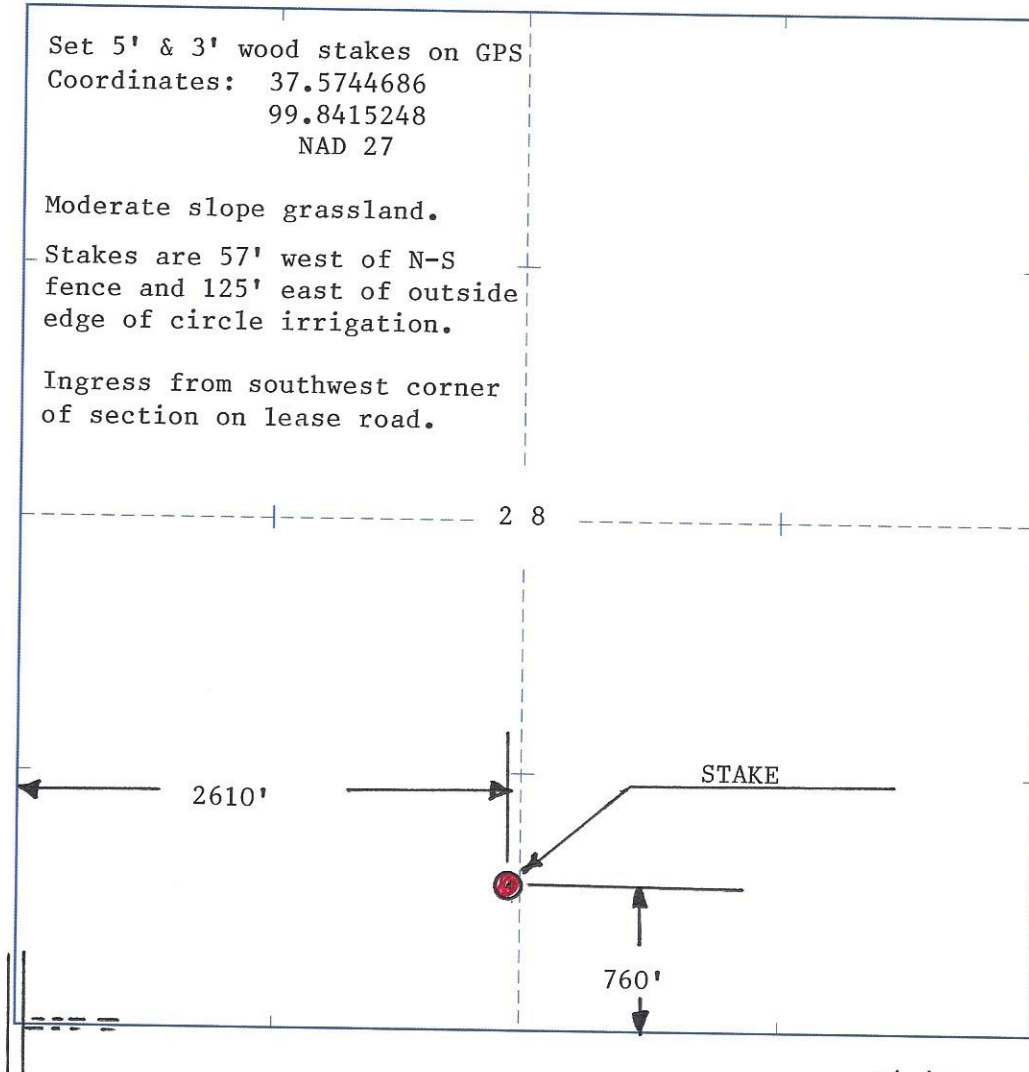
ELEVATION: 2465' GR



VINCENT OIL CORP.
155 N Market St.
Ste 700
Wichita, KS 67202

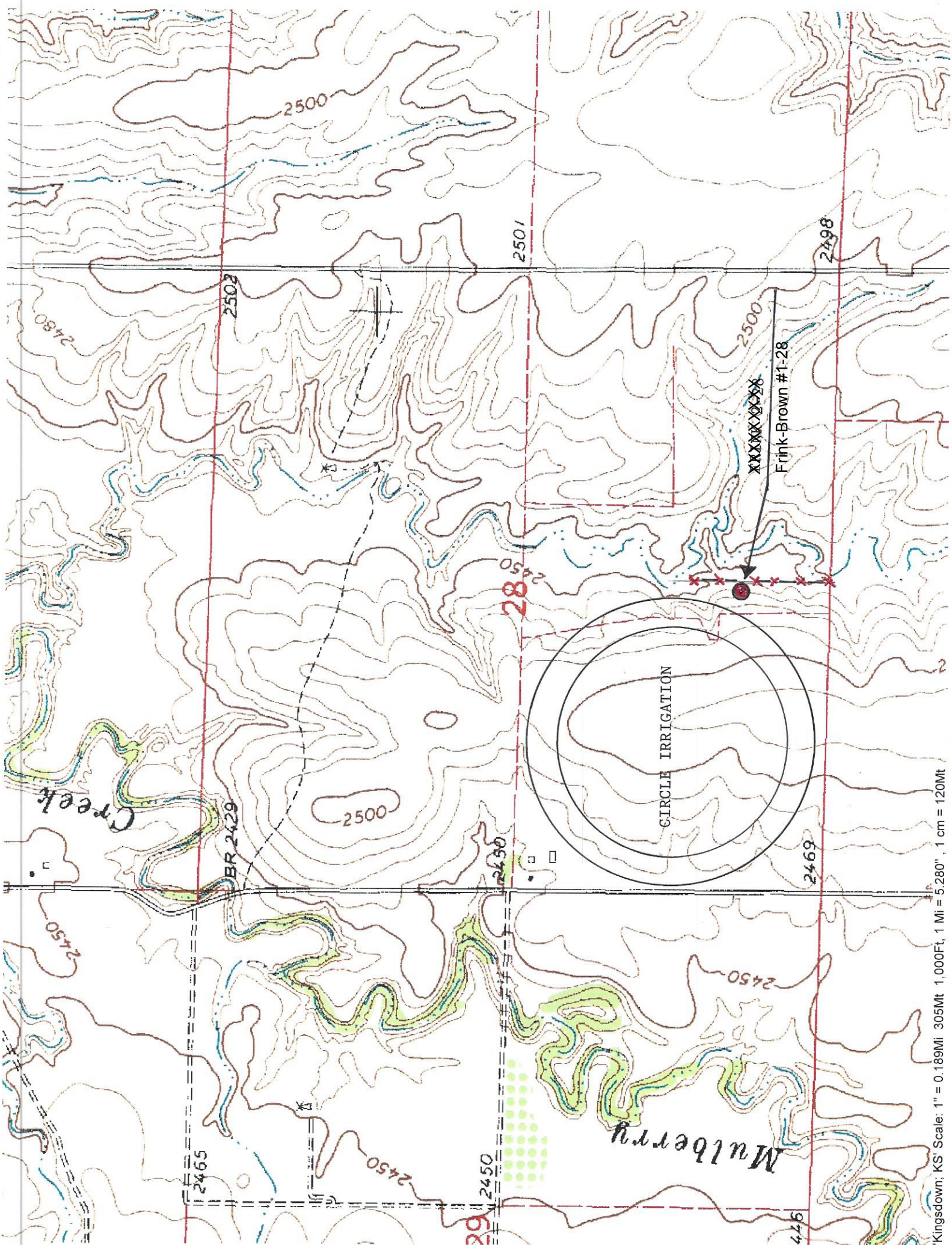
AUTHORIZED BY: M. L. Korphage

SCALE: 1" = 1000'



5/7/15

DATE STAKED: _____



Kingsdown; KS' Scale: 1" = 0.189Mi 305Mt 1,000Ft, 1 Mi = 5,280', 1 cm = 120Mt