

HALLIBURTON

Customer: TAPSTONE ENERGY LLC

Job: ANDY 35-34-9 1H

Case : Case 1

1.4 Job Event Log

Type	Seq. No.	Activity	Graph Label	Date	Time	Source	Comb Pump Rate (bbl/min)	DS Pump Press (psi)	DH Density (ppg)	Recirc Density (ppg)	Comments
Event	1	Call Out	Call Out	3/27/2015	12:00:00	USER					Called out by ARS OKC,OK
Event	2	Pre-Convoy Safety Meeting	Pre-Convoy Safety Meeting	3/27/2015	13:00:00	USER					Discussed route to location and safe driving
Event	3	Depart Home for Location	Depart Home for Location	3/27/2015	14:00:00	USER					Departed El Reno for location
Event	4	Arrive At Loc	Arrive At Loc	3/27/2015	17:00:00	USER					Arrived on location 1700 O/L time 1800
Event	5	Pre-Rig Up Safety Meeting	Pre-Rig Up Safety Meeting	3/27/2015	19:12:26	USER	0.00	7.00	-0.33	0.00	Discussed rig up procedures and safety
Event	6	Rig-Up Equipment	Rig-Up Equipment	3/27/2015	19:12:27	USER	0.00	7.00	-0.32	0.00	Rig up equipment
Event	7	Pre-Job Safety Meeting	Pre-Job Safety Meeting	3/27/2015	19:12:28	USER	0.00	7.00	-0.32	0.00	Discussed safety, nearest Hospital and job details.
Event	8	Test Lines	Test Lines	3/27/2015	19:56:11	COM4	0.00	27.00	8.26	8.38	Tested lines to 3000 PSI
Event	9	Pump Spacer 1	Pump Spacer 1	3/27/2015	19:57:55	COM4	2.00	15.00	8.22	8.34	Pumped 10 BBLS mud Spacer @ 3 BBLS
Event	10	Drop Bottom Plug	Drop Bottom Plug	3/27/2015	19:59:53	USER	2.00	220.00	8.27	8.33	Dropped bottom plug with Mud Flush
Event	11	Pump Lead Cement	Pump Lead Cement	3/27/2015	20:03:43	COM4	2.00	223.00	8.33	13.34	Pumped 38 BBLS of Lead Cement @ 5 BBLS
Event	12	Pump Tail Cement	Pump Tail Cement	3/27/2015	20:11:24	COM4	4.00	218.00	14.24	15.50	Pumped 19 BBLS Tail Cement @ 5 BBLS
Event	13	Shutdown	Shutdown	3/27/2015	20:11:25	USER	4.00	215.00	14.25	15.54	Shutdown
Event	14	Drop Top Plug	Drop Top Plug	3/27/2015	20:11:26	USER	4.00	216.00	14.26	15.58	Drop top plug
Event	15	Pump Displacement	Pump Displacement	3/27/2015	20:20:33	COM4	0.80	-18.00	7.95	2.11	Pumped 200 BBLS of

iCem Service

(v. 4.1.107)

Created: Friday, March 27, 2015

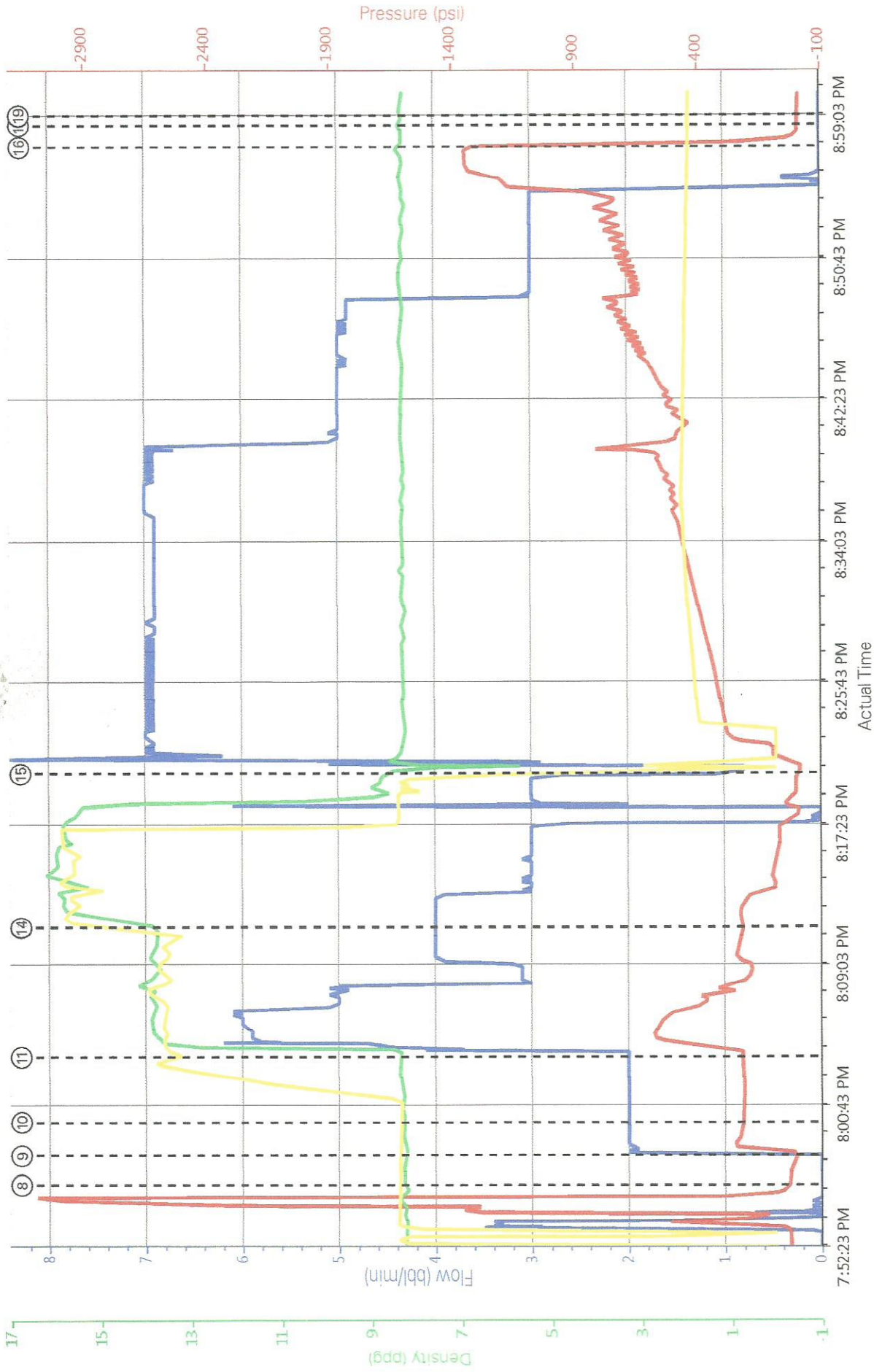
HALLIBURTON

Customer: TAPSTONE ENERGY LLC
 Job: ANDY 35-349 1H
 Case: Case 1

Displacement Bumped plug
 @ 1300 PSI

Event 16	Bump Plug	Bump Plug	3/27/2015	20:57:25	COM4	0.00	358.00	8.30	1.91	Bumped plug @ 1300 PSI
Event 17	Check Floats	Check Floats	3/27/2015	20:58:40	USER	0.00	-14.00	8.29	1.91	Floats held 1 BBLS back
Event 18	End Job	End Job	3/27/2015	20:59:14	COM4	0.00	-14.00	8.35	1.90	Job activities complete
Event 19	Pre-Rig Down Safety Meeting	Pre-Rig Down Safety Meeting	3/27/2015	20:59:15	USER	0.00	-14.00	8.33	1.90	Discussed rig down procedures and safety
Event 20	Rig-Down Equipment	Rig-Down Equipment	3/27/2015	21:30:00	USER					Rig down equipment
Event 21	Depart Location for Service Center or Other Site	Depart Location for Service Center or Other Site	3/27/2015	22:00:00	USER					Departed location for EI Reno
Event 22	Arrive at Home	Arrive at Home	3/28/2015	02:00:00	USER					Arrive EI Reno

TAPSTO NE ANDY 35-34-9 1H



Comb Pump Rate (bb/min) DS Pump Press (psi) DH Density (ppg) Recirc Density (ppg)

- ⑧ Pump Spacer 12; 15; 8:22; 8:34
- ⑨ Pump Lead Cement 2; 2:23; 8:33; 13:34
- ⑩ Shutdown 4; 2:15; 14:25; 5:24
- ⑪ Pump Displacement 0.8; 18; 7:95; 2:11
- ⑫ Check Floats 0; 14; 8:29; 9:17
- ⑬ Pump Tail Cement 4; 2:18; 14:24; 15:5
- ⑭ Drop Top Plug 4; 2:16; 14:26; 15:58
- ⑮ Bump Plug 0; 3:58; 8:3; 1:91
- ⑯ End Job 0; 14; 8:35; 1:9
- ⑰ Pre-Rig
- ⑱ 20 Rig-Do

The Road to Excellence Starts with Safety

Sold To #: 372073 Ship To #: 3652105 Quote #: 0022013635 Sales Order #: 0902255447

Customer: TAPSTONE ENERGY LLC Customer Rep:

Well Name: ANDY 35-34-9 Well #: 1H AP/UWI #: 15-077-22135-01

Field: UNDESIGNATED City (SAP): WALDRON County/Parish: HARPER State: KANSAS

Legal Description: NE NE NW NE-35-34S-9W-250FNL-1600FEL

Contractor: NOMAC Rig/Platform Name/Num: NOMAC 07

Job BOM: 7522

Well Type: HORIZONTAL OIL

Sales Person: HALAMERICA\HX25353

Svc Supervisor: Robert Husted

Job

Formation Name

Formation Depth (MD) Top Bottom

Form Type BHT

Job depth MD 5161ft

Water Depth WK Ht Above Floor

Perforation Depth (MD) From To

Well Data

Description New / Used Size in ID in Weight lbm/ft Thread Grade Top MD Bottom MD Top TVD Bottom TVD

Casing 3 9.625 8.921 36 LTC J-55 0 800

Casing 3 7 6.276 26 LTC P-110 0 5161 0 4694

Open Hole Section

Tools and Accessories

Type Size in Qty Make Depth ft

Guide Shoe 7 7 5161 Top Plug

Float Shoe 7 7 Bottom Plug

Float Collar 7 7 SSR plug set

Insert Float 7 7 Plug Container

Stage Tool 7 7 Centralizers

Miscellaneous Materials

Gelling Agt Conc Surfactant Conc Acid Type Sand Type

Treatment Fid Conc Inhibitor Conc

Fluid Data

Stage/Plug #: 1

Fluid # Stage Type Fluid Name Qty Qty Uom

Mixing Density lbm/gal Yield ft3/sack Mix Fluid Gal Rate bbl/mi Total Mix Gal

1 Mud Flush III Mud Flush III 10 bbl 8.4 5

FRESH WATER 41 gal/bbl

Page 1 of 3

last updated on 3/27/2015 10:10:52 PM

Cementing Job Summary

HALLIBURTON

Fluid #	Stage Type	Fluid Name	Qty	Qty Uom	Mixing Density lbm/gal	Yield ft ³ /sack	Mix Fluid Gal	Rate bbl/mi	Total Mix Fluid Gal
2	Lead Cement	ECONOCEM (TM) SYSTEM	140	sack	13.6	1.506		5	7.3
0.40% HALAD(R)-9, 50 LB (100001617) BENTONITE, BULK (100003682) <i>38 BBLs</i>									
3	Tail Cement	HALCEM (TM) SYSTEM	90	sack	15.6	1.184		5	5.26
0.40% HALAD(R)-9, 50 LB (100001617) GNT PREMIUM GRADE HRCR OR TYPE V, BULK (400000007)									
5.26 Gal FRESH WATER <i>15 BBLs</i>									
Fluid #	Stage Type	Fluid Name	Qty	Qty Uom	Mixing Density lbm/gal	Yield ft ³ /sack	Mix Fluid Gal	Rate bbl/mi	Total Mix Fluid Gal
4	Displacement	Displacement	200	bbl	8.33			5	
Cement Left In Pipe Amount 85.96 ft Reason Shoe Joint									
		Mix Water: pH ##	Mix Water: ## ppm					Mix Water Temperature: ## °C	
		Cement Temperature: ## °C	Plug Displaced by: ## lb/gal ka/m ³ XXXX					Disp. Temperature: ## °C	
		Plug Bumped? Yes	Bump Pressure: 1300 psi					Floats Height: ##	
		Cement Returns: ## bbl m ³	Returns Density: ## lb/gal kg/m ³					Returns Temperature: ## °C	

Comment 1 bbls RETURN



Summary Report

Sales Order #: 0902255447
WO #: 0902255447
PO/AFE #: NA

Crew: _____
Job Start Date: 3/27/2015

Customer:	TAPSTONE ENERGY LLC	Field:	UNDESIGNATED	Job Type:	CMT INTERMEDIATE
UWI / API Number:	15-077-22135-01	County/Parish:	HARPER	Service Supervisor:	CASING BOM Robert Husted
Well Name:	ANDY 35-34-9	State:	KANSAS	Cust Rep Name:	
Well No:	1H	Latitude:	37.049946	Cust Rep Phone #:	
		Longitude:	-98.260918		
		Sect / Twn / Rng:	35/34/9		

Remarks:

The information stated herein is correct

Customer Representative Printed Name

Customer Representative Signature

Date