



DRILL STEM TEST REPORT

Prepared For: **Murfin Drilling Co., Inc.**

250 N. Water, Ste 300
Wichita KS 67202

ATTN: Rocky Milford

Vrbas 'A' #1-25

25-4s-31w Rawlins,KS

Start Date: 2015.04.16 @ 08:42:00

End Date: 2015.04.16 @ 16:50:45

Job Ticket #: 62362 DST #: 1

Trilobite Testing, Inc
1515 Commerce Parkway Hays, KS 67601
ph: 785-625-4778 fax: 785-625-5620

Printed: 2015.04.20 @ 15:55:07



TRILOBITE TESTING, INC.

DRILL STEM TEST REPORT

Murfin Drilling Co., Inc.
 250 N. Water, Ste 300
 Wichita KS 67202
 ATTN: Rocky Milford

25-4s-31w Rawlins,KS

Vrbas 'A' #1-25

Job Ticket: 62362

DST#: 1

Test Start: 2015.04.16 @ 08:42:00

GENERAL INFORMATION:

Formation: **Toronto -LKC 'B'**
 Deviated: No Whipstock: ft (KB)
 Time Tool Opened: 10:46:30
 Time Test Ended: 16:50:45
 Interval: **3876.00 ft (KB) To 3960.00 ft (KB) (TVD)**
 Total Depth: 3960.00 ft (KB) (TVD)
 Hole Diameter: 7.88 inches Hole Condition: Good
 Test Type: Conventional Bottom Hole (Initial)
 Tester: Royal Fisher
 Unit No: 54
 Reference Elevations: 2881.00 ft (KB)
 2876.00 ft (CF)
 KB to GR/CF: 5.00 ft

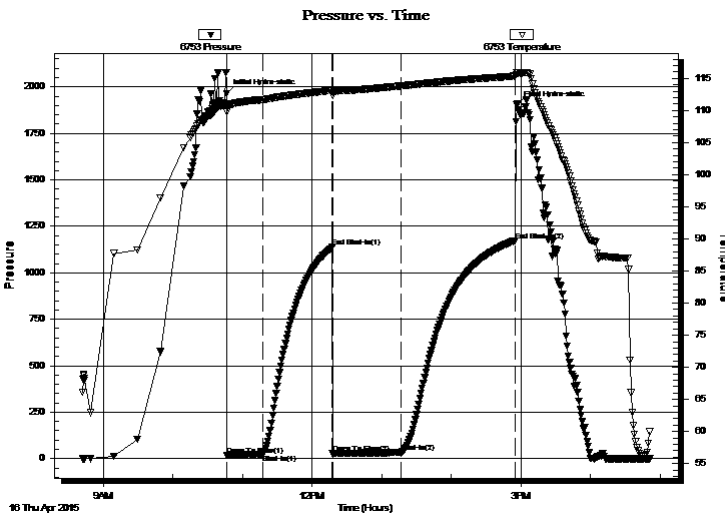
Serial #: 6753

Outside

Press@RunDepth: 32.96 psig @ 3877.00 ft (KB) Capacity: 8000.00 psig
 Start Date: 2015.04.16 End Date: 2015.04.16 Last Calib.: 2015.04.16
 Start Time: 08:42:05 End Time: 16:50:44 Time On Btm: 2015.04.16 @ 10:46:15
 Time Off Btm: 2015.04.16 @ 14:56:15

TEST COMMENT: 30 - IF - Surface blow built to 1/4"
 60 - ISI - No Return
 60 - FF - No Surface blow
 90 - FSI - No Return

PRESSURE SUMMARY



Time (Min.)	Pressure (psig)	Temp (deg F)	Annotation
0	1963.61	110.93	Initial Hydro-static
1	16.94	109.71	Open To Flow (1)
31	25.08	111.66	Shut-In(1)
91	1137.15	113.11	End Shut-In(1)
92	26.27	112.38	Open To Flow (2)
150	32.96	113.81	Shut-In(2)
249	1173.40	115.34	End Shut-In(2)
250	1901.38	115.80	Final Hydro-static

Recovery

Length (ft)	Description	Volume (bbl)
10.00	OSM - 100M - Oil Spots	0.05

Gas Rates

Choke (inches)	Pressure (psig)	Gas Rate (Mcf/d)



**TRILOBITE
TESTING, INC**

DRILL STEM TEST REPORT

TOOL DIAGRAM

Murfin Drilling Co., Inc.

25-4s-31w Rawlins,KS

250 N. Water, Ste 300
Wichita KS 67202

Vrbas 'A' #1-25

Job Ticket: 62362

DST#: 1

ATTN: Rocky Milford

Test Start: 2015.04.16 @ 08:42:00

Tool Information

Drill Pipe:	Length: 3611.83 ft	Diameter: 3.80 inches	Volume: 50.66 bbl	Tool Weight: 2500.00 lb
Heavy Wt. Pipe:	Length: 0.00 ft	Diameter: 0.00 inches	Volume: 0.00 bbl	Weight set on Packer: 25000.00 lb
Drill Collar:	Length: 248.79 ft	Diameter: 2.25 inches	Volume: 1.22 bbl	Weight to Pull Loose: 60000.00 lb
			<u>Total Volume: 51.88 bbl</u>	Tool Chased 0.00 ft
Drill Pipe Above KB:	11.62 ft			String Weight: Initial 56000.00 lb
Depth to Top Packer:	3876.00 ft			Final 56000.00 lb
Depth to Bottom Packer:	ft			
Interval between Packers:	84.00 ft			
Tool Length:	111.00 ft			
Number of Packers:	2	Diameter: 6.75 inches		

Tool Comments:

Tool Description

Tool Description	Length (ft)	Serial No.	Position	Depth (ft)	Accum. Lengths
Shut In Tool	5.00			3854.00	
Hydraulic tool	5.00			3859.00	
Jars	5.00			3864.00	
Safety Joint	3.00			3867.00	
Packer	4.00			3871.00	27.00 Bottom Of Top Packer
Packer	5.00			3876.00	
Stubb	1.00			3877.00	
Recorder	0.00	8368	Inside	3877.00	
Recorder	0.00	6753	Outside	3877.00	
Perforations	14.00			3891.00	
Change Over Sub	1.00			3892.00	
Drill Pipe	63.00			3955.00	
Change Over Sub	1.00			3956.00	
Bullnose	4.00			3960.00	84.00 Bottom Packers & Anchor

Total Tool Length: 111.00



**TRILOBITE
TESTING, INC**

DRILL STEM TEST REPORT

FLUID SUMMARY

Murfin Drilling Co., Inc.

25-4s-31w Rawlins,KS

250 N. Water, Ste 300
Wichita KS 67202

Vrbas 'A' #1-25

Job Ticket: 62362

DST#: 1

ATTN: Rocky Milford

Test Start: 2015.04.16 @ 08:42:00

Mud and Cushion Information

Mud Type: Gel Chem

Cushion Type:

Oil API:

deg API

Mud Weight: 9.00 lb/gal

Cushion Length:

ft

Water Salinity:

ppm

Viscosity: 186.00 sec/qt

Cushion Volume:

bbf

Water Loss: 5.19 in³

Gas Cushion Type:

Resistivity: 0.00 ohm.m

Gas Cushion Pressure:

psig

Salinity: 1600.00 ppm

Filter Cake: 1.00 inches

Recovery Information

Recovery Table

Length ft	Description	Volume bbf
10.00	OSM - 100M - Oil Spots	0.049

Total Length: 10.00 ft Total Volume: 0.049 bbf

Num Fluid Samples: 0

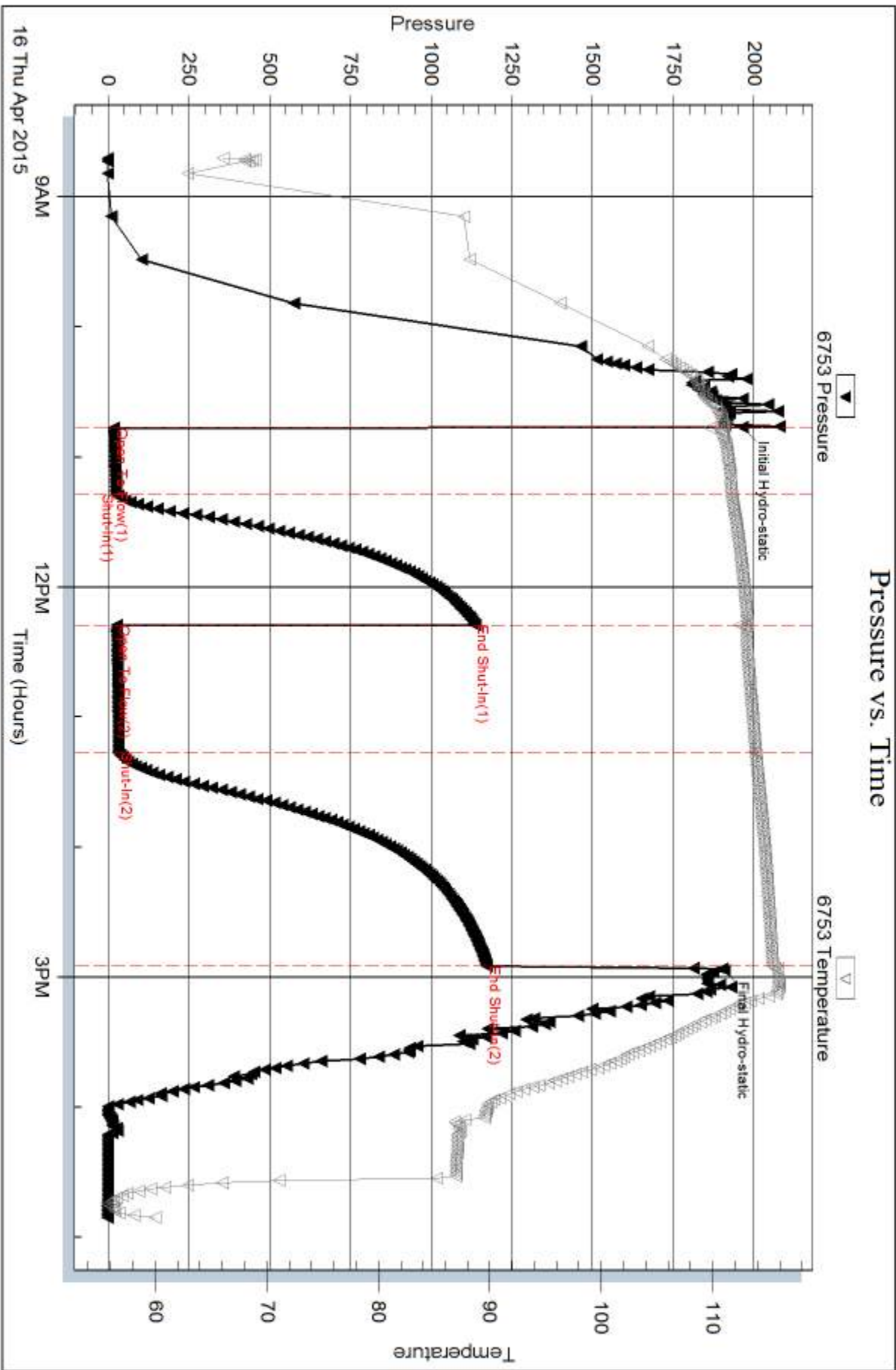
Num Gas Bombs: 0

Serial #:

Laboratory Name:

Laboratory Location:

Recovery Comments:



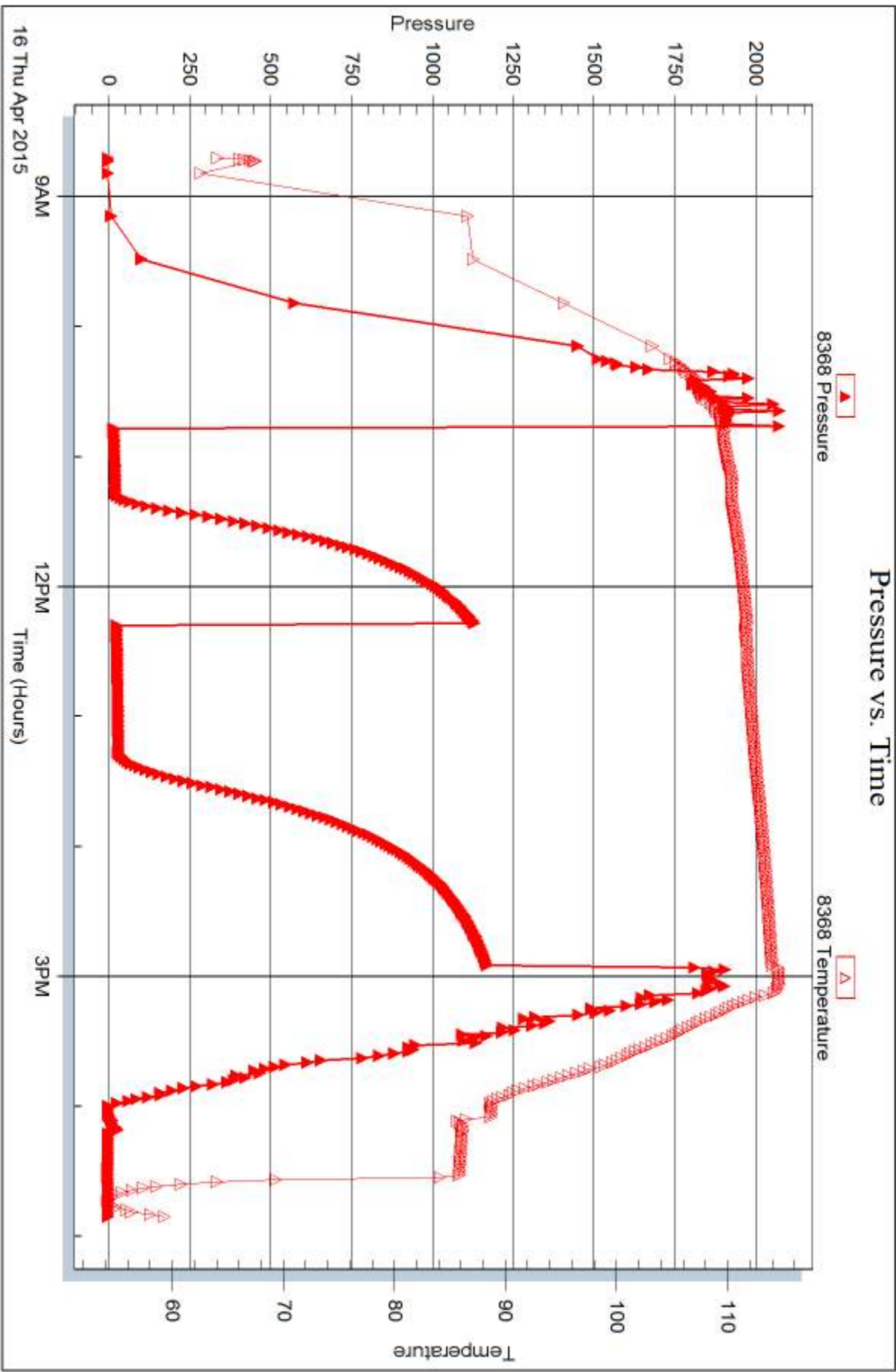
Serial #: 8368

Inside

Murfin Drilling Co., Inc.

Vrbas 'A' #1-25

DST Test Number: 1





DRILL STEM TEST REPORT

Prepared For: **Murfin Drilling Co., Inc.**

250 N. Water, Ste 300
Wichita KS 67202

ATTN: Rocky Milford

Vrbas 'A' #1-25

25-4s-31w Rawlins,KS

Start Date: 2015.04.17 @ 02:26:00

End Date: 2015.04.17 @ 11:20:45

Job Ticket #: 62363 DST #: 2

Trilobite Testing, Inc
1515 Commerce Parkway Hays, KS 67601
ph: 785-625-4778 fax: 785-625-5620

Printed: 2015.04.20 @ 15:54:33



**TRILOBITE
TESTING, INC**

DRILL STEM TEST REPORT

Murfin Drilling Co., Inc.
250 N. Water, Ste 300
Wichita KS 67202
ATTN: Rocky Milford

25-4s-31w Rawlins,KS

Vrbas 'A' #1-25

Job Ticket: 62363

DST#: 2

Test Start: 2015.04.17 @ 02:26:00

GENERAL INFORMATION:

Formation: **LKC 'E-G'**
 Deviated: No Whipstock: ft (KB)
 Time Tool Opened: 05:00:15
 Time Test Ended: 11:20:45
 Interval: **3976.00 ft (KB) To 4014.00 ft (KB) (TVD)**
 Total Depth: 4014.00 ft (KB) (TVD)
 Hole Diameter: 7.88 inches Hole Condition: Good
 Test Type: Conventional Bottom Hole (Initial)
 Tester: Royal Fisher
 Unit No: 54
 Reference Elevations: 2881.00 ft (KB)
 2876.00 ft (CF)
 KB to GR/CF: 5.00 ft

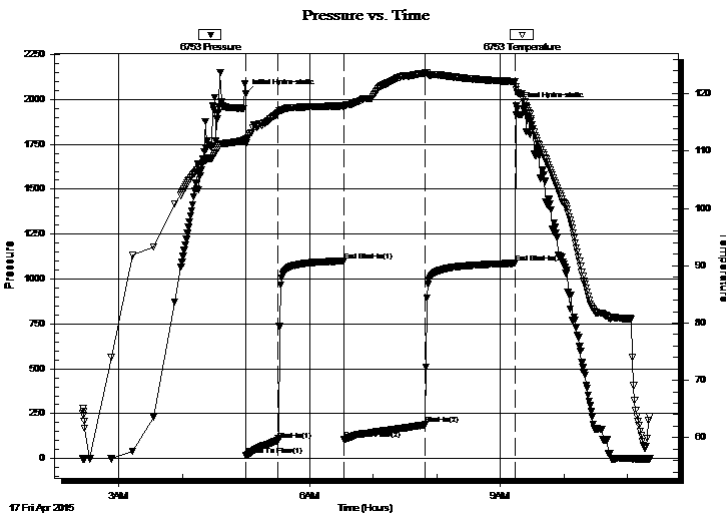
Serial #: 6753

Inside

Press@RunDepth: 189.33 psig @ 3977.00 ft (KB) Capacity: 8000.00 psig
 Start Date: 2015.04.17 End Date: 2015.04.17 Last Calib.: 2015.04.17
 Start Time: 02:26:05 End Time: 11:20:45 Time On Btm: 2015.04.17 @ 05:00:00
 Time Off Btm: 2015.04.17 @ 09:15:00

TEST COMMENT: 30 - IF - Surface blow built up to 6"
 60 - ISI - No Return
 60 - FF - Surface blow started in 5 mins. and built up to 10"
 90 - FSI - No Return

PRESSURE SUMMARY



Time (Min.)	Pressure (psig)	Temp (deg F)	Annotation
0	2033.49	112.14	Initial Hydro-static
1	18.39	111.36	Open To Flow (1)
31	101.50	116.76	Shut-In(1)
93	1100.08	117.91	End Shut-In(1)
93	106.35	117.59	Open To Flow (2)
169	189.33	123.65	Shut-In(2)
254	1087.79	122.14	End Shut-In(2)
255	1962.35	120.69	Final Hydro-static

Recovery

Length (ft)	Description	Volume (bbl)
189.00	MW- 5M - 95W	0.93
63.00	MW- 10M - 90W	0.34
63.00	WM - 50M - 50W	0.88
5.00	WM - 80M - 20W	0.07

Gas Rates

	Choke (inches)	Pressure (psig)	Gas Rate (Mcf/d)



**TRILOBITE
TESTING, INC**

DRILL STEM TEST REPORT

TOOL DIAGRAM

Murfin Drilling Co., Inc.

25-4s-31w Rawlins,KS

250 N. Water, Ste 300
Wichita KS 67202

Vrbas 'A' #1-25

Job Ticket: 62363

DST#: 2

ATTN: Rocky Milford

Test Start: 2015.04.17 @ 02:26:00

Tool Information

Drill Pipe:	Length: 3706.83 ft	Diameter: 3.80 inches	Volume: 52.00 bbl	Tool Weight:	2500.00 lb
Heavy Wt. Pipe:	Length: 0.00 ft	Diameter: 0.00 inches	Volume: 0.00 bbl	Weight set on Packer:	25000.00 lb
Drill Collar:	Length: 248.79 ft	Diameter: 2.25 inches	Volume: 1.22 bbl	Weight to Pull Loose:	62000.00 lb
			<u>Total Volume: 53.22 bbl</u>	Tool Chased	0.00 ft
Drill Pipe Above KB:	6.62 ft			String Weight: Initial	56000.00 lb
Depth to Top Packer:	3976.00 ft			Final	56000.00 lb
Depth to Bottom Packer:	ft				
Interval between Packers:	38.00 ft				
Tool Length:	65.00 ft				
Number of Packers:	2	Diameter: 6.75 inches			

Tool Comments:

Tool Description

Tool Description	Length (ft)	Serial No.	Position	Depth (ft)	Accum. Lengths
Shut In Tool	5.00			3954.00	
Hydraulic tool	5.00			3959.00	
Jars	5.00			3964.00	
Safety Joint	3.00			3967.00	
Packer	4.00			3971.00	27.00 Bottom Of Top Packer
Packer	5.00			3976.00	
Stubb	1.00			3977.00	
Recorder	0.00	6753	Inside	3977.00	
Recorder	0.00	8368	Outside	3977.00	
Perforations	33.00			4010.00	
Bullnose	4.00			4014.00	38.00 Bottom Packers & Anchor

Total Tool Length: 65.00



**TRILOBITE
TESTING, INC**

DRILL STEM TEST REPORT

FLUID SUMMARY

Murfin Drilling Co., Inc.

25-4s-31w Rawlins,KS

250 N. Water, Ste 300
Wichita KS 67202

Vrbas 'A' #1-25

Job Ticket: 62363

DST#: 2

ATTN: Rocky Milford

Test Start: 2015.04.17 @ 02:26:00

Mud and Cushion Information

Mud Type: Gel Chem

Cushion Type:

Oil API:

deg API

Mud Weight: 9.00 lb/gal

Cushion Length:

ft

Water Salinity:

62000 ppm

Viscosity: 50.00 sec/qt

Cushion Volume:

bbbl

Water Loss: 6.79 in³

Gas Cushion Type:

Resistivity: 0.00 ohm.m

Gas Cushion Pressure:

psig

Salinity: 22000.00 ppm

Filter Cake: 3.00 inches

Recovery Information

Recovery Table

Length ft	Description	Volume bbbl
189.00	MW- 5M - 95W	0.929
63.00	MW- 10M - 90W	0.339
63.00	WM- 50M - 50W	0.884
5.00	WM- 80M - 20W	0.070

Total Length: 320.00 ft

Total Volume: 2.222 bbl

Num Fluid Samples: 0

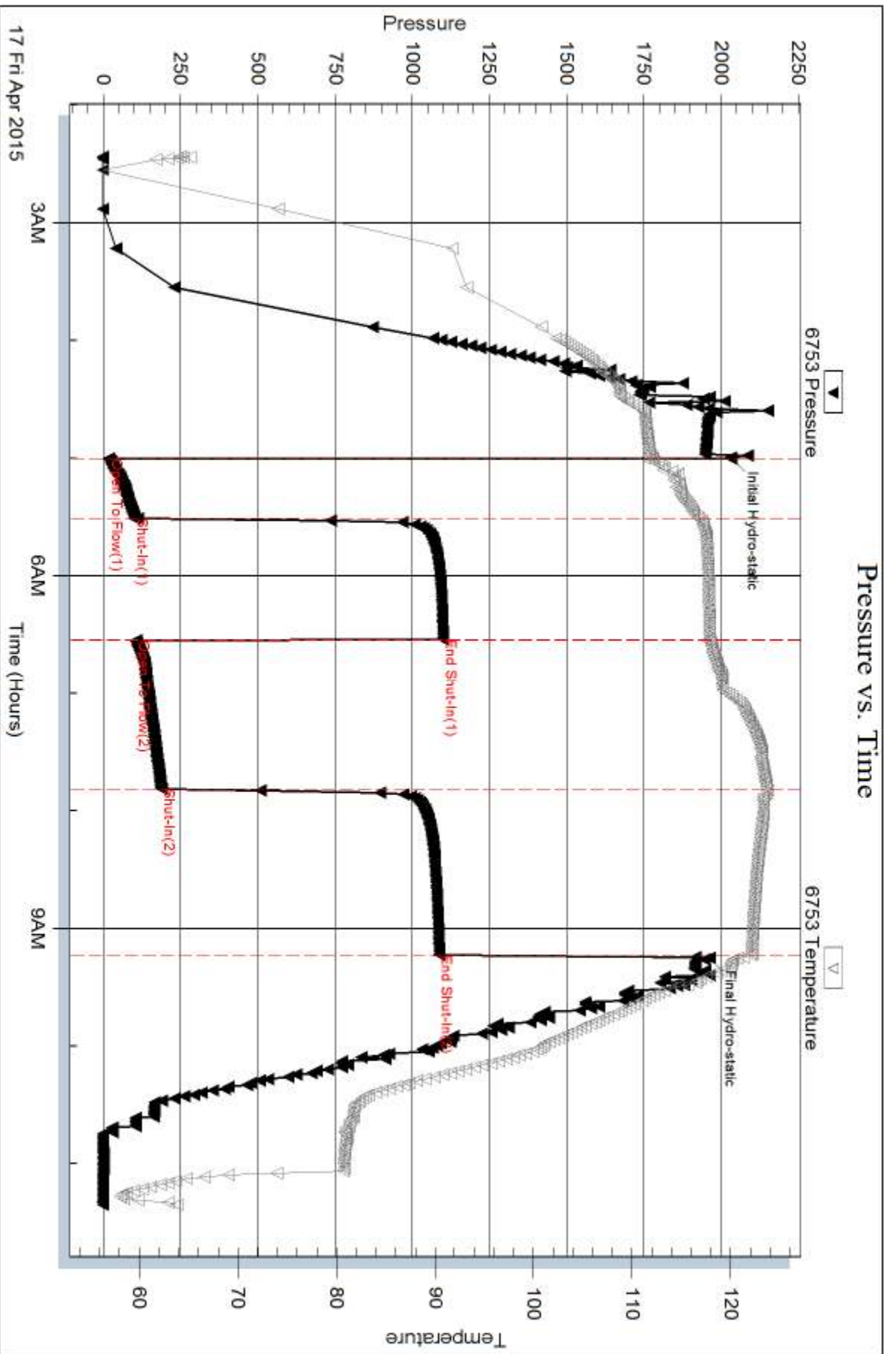
Num Gas Bombs: 0

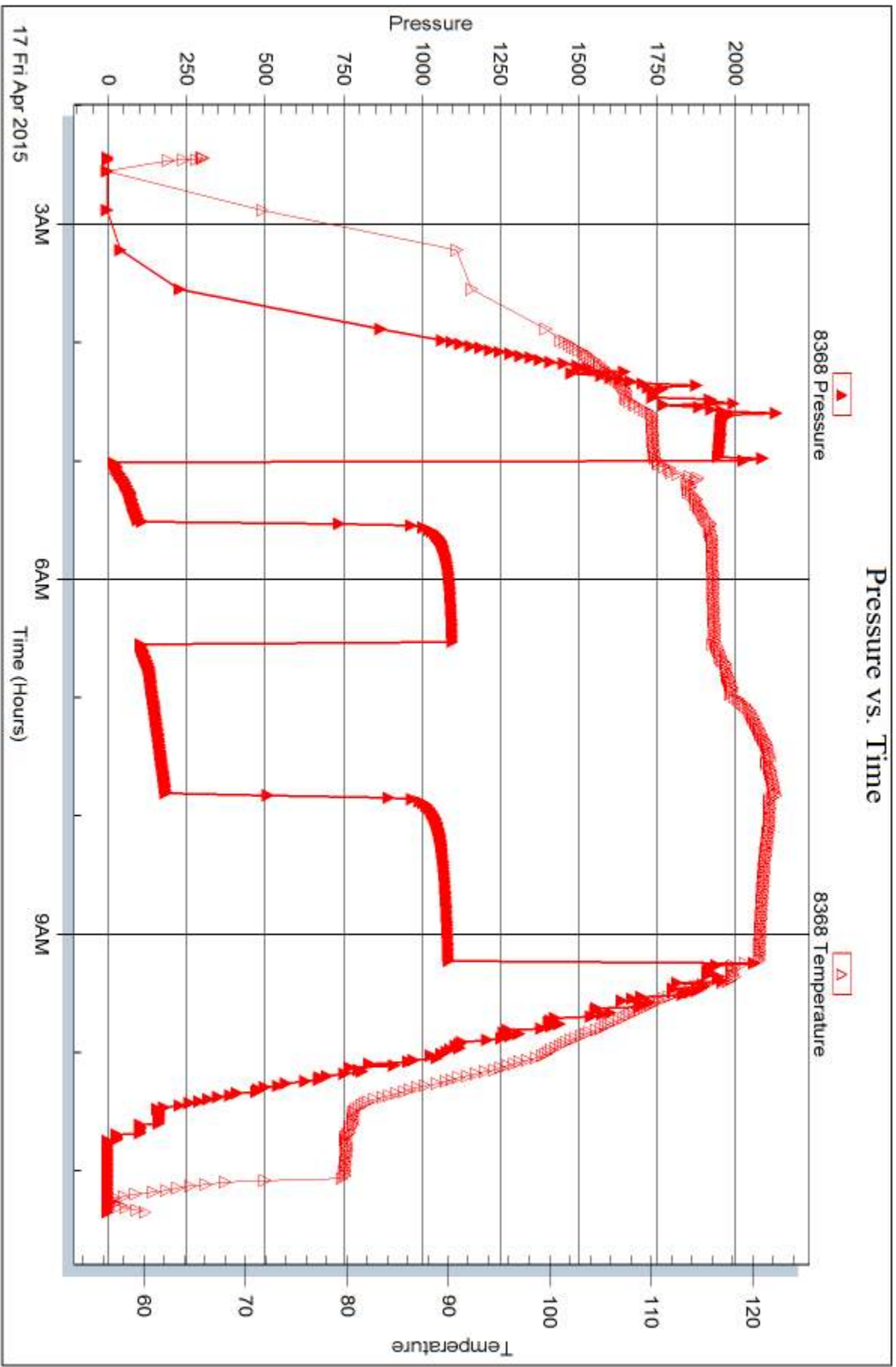
Serial #:

Laboratory Name:

Laboratory Location:

Recovery Comments:







DRILL STEM TEST REPORT

Prepared For: **Murfin Drilling Co., Inc.**

250 N. Water, Ste 300
Wichita KS 67202

ATTN: Rocky Milford

Vrbas 'A' #1-25

25-4s-31w Rawlins,KS

Start Date: 2015.04.17 @ 21:30:00

End Date: 2015.04.18 @ 06:09:45

Job Ticket #: 62364 DST #: 3

Trilobite Testing, Inc
1515 Commerce Parkway Hays, KS 67601
ph: 785-625-4778 fax: 785-625-5620

Printed: 2015.04.20 @ 15:53:12



TRILOBITE TESTING, INC

DRILL STEM TEST REPORT

Murfin Drilling Co., Inc.
 250 N. Water, Ste 300
 Wichita KS 67202
 ATTN: Rocky Milford

25-4s-31w Rawlins,KS

Vrbas 'A' #1-25

Job Ticket: 62364

DST#: 3

Test Start: 2015.04.17 @ 21:30:00

GENERAL INFORMATION:

Formation: **LKC 'H- J'**
 Deviated: No Whipstock: ft (KB)
 Time Tool Opened: 23:34:30
 Time Test Ended: 06:09:45
 Interval: **4022.00 ft (KB) To 4094.00 ft (KB) (TVD)**
 Total Depth: 4094.00 ft (KB) (TVD)
 Hole Diameter: 7.88 inches Hole Condition: Good
 Test Type: Conventional Bottom Hole (Initial)
 Tester: Royal Fisher
 Unit No: 54
 Reference Elevations: 2881.00 ft (KB)
 2876.00 ft (CF)
 KB to GR/CF: 5.00 ft

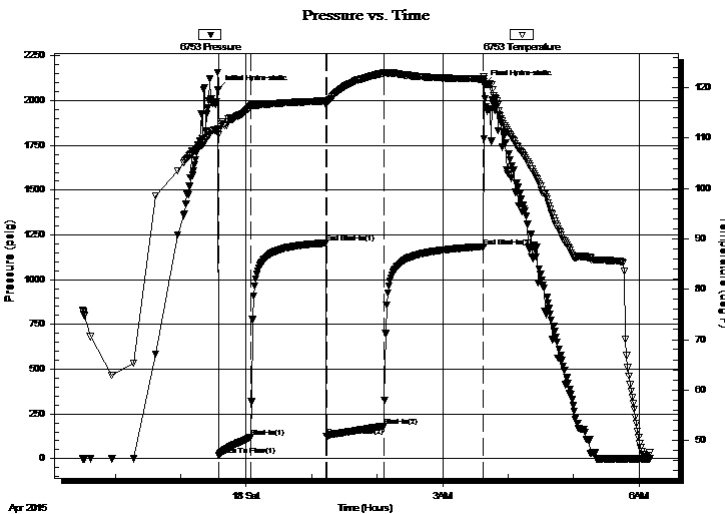
Serial #: 6753

Outside

Press@RunDepth: 182.36 psig @ 4023.00 ft (KB) Capacity: 8000.00 psig
 Start Date: 2015.04.17 End Date: 2015.04.18 Last Calib.: 2015.04.18
 Start Time: 21:30:05 End Time: 06:09:45 Time On Btm: 2015.04.17 @ 23:34:15
 Time Off Btm: 2015.04.18 @ 03:38:15

TEST COMMENT: 30 - IF - Surface blow built to 7"
 60 - ISI - No Return
 60 - FF - Surface blow built to 3 1/2"
 90 - FSI - No Return

PRESSURE SUMMARY



Time (Min.)	Pressure (psig)	Temp (deg F)	Annotation
0	2061.94	111.93	Initial Hydro-static
1	19.85	110.71	Open To Flow (1)
30	118.99	116.25	Shut-In(1)
99	1204.92	117.39	End Shut-In(1)
100	125.20	116.69	Open To Flow (2)
152	182.36	122.88	Shut-In(2)
244	1184.53	121.75	End Shut-In(2)
244	2091.29	121.26	Final Hydro-static

Recovery

Length (ft)	Description	Volume (bbl)
63.00	MW - 35M - 65W	0.31
189.00	MW - 10M - 90W	0.96
103.00	MW - 40M - 60W	1.44

Gas Rates

	Choke (inches)	Pressure (psig)	Gas Rate (Mcf/d)



TRILOBITE TESTING, INC

DRILL STEM TEST REPORT

Murfin Drilling Co., Inc.
 250 N. Water, Ste 300
 Wichita KS 67202
 ATTN: Rocky Milford

25-4s-31w Rawlins,KS

Vrbas 'A' #1-25

Job Ticket: 62364

DST#: 3

Test Start: 2015.04.17 @ 21:30:00

GENERAL INFORMATION:

Formation: **LKC 'H- J'**
 Deviated: No Whipstock: ft (KB)
 Time Tool Opened: 23:34:30
 Time Test Ended: 06:09:45
 Interval: **4022.00 ft (KB) To 4094.00 ft (KB) (TVD)**
 Total Depth: 4094.00 ft (KB) (TVD)
 Hole Diameter: 7.88 inches Hole Condition: Good
 Test Type: Conventional Bottom Hole (Initial)
 Tester: Royal Fisher
 Unit No: 54
 Reference Elevations: 2881.00 ft (KB)
 2876.00 ft (CF)
 KB to GR/CF: 5.00 ft

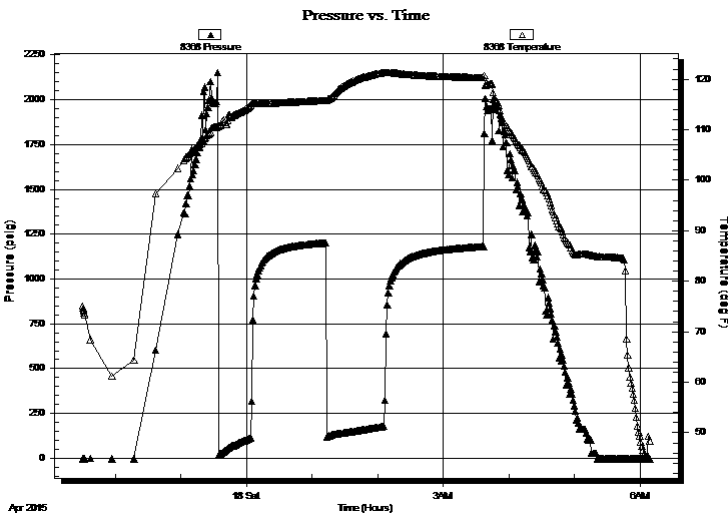
Serial #: 8368

Inside

Press@RunDepth: psig @ 4023.00 ft (KB) Capacity: 8000.00 psig
 Start Date: 2015.04.17 End Date: 2015.04.18 Last Calib.: 1899.12.30
 Start Time: 21:30:05 End Time: 06:09:30 Time On Btm:
 Time Off Btm:

TEST COMMENT: 30 - IF - Surface blow built to 7"
 60 - ISI - No Return
 60 - FF - Surface blow built to 3 1/2"
 90 - FSI - No Return

PRESSURE SUMMARY



Time (Min.)	Pressure (psig)	Temp (deg F)	Annotation

Recovery

Length (ft)	Description	Volume (bbl)
63.00	MW - 35M - 65W	0.31
189.00	MW - 10M - 90W	0.96
103.00	MW - 40M - 60W	1.44

Gas Rates

	Choke (inches)	Pressure (psig)	Gas Rate (Mcf/d)



**TRILOBITE
TESTING, INC**

DRILL STEM TEST REPORT

TOOL DIAGRAM

Murfin Drilling Co., Inc.

25-4s-31w Rawlins,KS

250 N. Water, Ste 300
Wichita KS 67202

Vrbas 'A' #1-25

Job Ticket: 62364

DST#: 3

ATTN: Rocky Milford

Test Start: 2015.04.17 @ 21:30:00

Tool Information

Drill Pipe:	Length: 3770.02 ft	Diameter: 3.80 inches	Volume: 52.88 bbl	Tool Weight: 2500.00 lb
Heavy Wt. Pipe:	Length: 0.00 ft	Diameter: 0.00 inches	Volume: 0.00 bbl	Weight set on Packer: 25000.00 lb
Drill Collar:	Length: 248.79 ft	Diameter: 2.25 inches	Volume: 1.22 bbl	Weight to Pull Loose: 60000.00 lb
			<u>Total Volume: 54.10 bbl</u>	Tool Chased 0.00 ft
Drill Pipe Above KB:	23.81 ft			String Weight: Initial 54000.00 lb
Depth to Top Packer:	4022.00 ft			Final 54000.00 lb
Depth to Bottom Packer:	ft			
Interval between Packers:	72.00 ft			
Tool Length:	99.00 ft			
Number of Packers:	2	Diameter: 6.75 inches		

Tool Comments:

Tool Description

Tool Description	Length (ft)	Serial No.	Position	Depth (ft)	Accum. Lengths
Shut In Tool	5.00			4000.00	
Hydraulic tool	5.00			4005.00	
Jars	5.00			4010.00	
Safety Joint	3.00			4013.00	
Packer	4.00			4017.00	27.00 Bottom Of Top Packer
Packer	5.00			4022.00	
Stubb	1.00			4023.00	
Recorder	0.00	8368	Inside	4023.00	
Recorder	0.00	6753	Outside	4023.00	
Perforations	34.00			4057.00	
Change Over Sub	1.00			4058.00	
Drill Pipe	31.00			4089.00	
Change Over Sub	1.00			4090.00	
Bullnose	4.00			4094.00	72.00 Bottom Packers & Anchor

Total Tool Length: 99.00



**TRILOBITE
TESTING, INC**

DRILL STEM TEST REPORT

FLUID SUMMARY

Murfin Drilling Co., Inc.

25-4s-31w Rawlins,KS

250 N. Water, Ste 300
Wichita KS 67202

Vrbas 'A' #1-25

Job Ticket: 62364

DST#: 3

ATTN: Rocky Milford

Test Start: 2015.04.17 @ 21:30:00

Mud and Cushion Information

Mud Type: Gel Chem

Cushion Type:

Oil API:

deg API

Mud Weight: 9.00 lb/gal

Cushion Length:

ft

Water Salinity:

75000 ppm

Viscosity: 47.00 sec/qt

Cushion Volume:

bbbl

Water Loss: 6.39 in³

Gas Cushion Type:

Resistivity: 0.00 ohm.m

Gas Cushion Pressure:

psig

Salinity: 2000.00 ppm

Filter Cake: 2.00 inches

Recovery Information

Recovery Table

Length ft	Description	Volume bbl
63.00	MW - 35M - 65W	0.310
189.00	MW - 10M - 90W	0.959
103.00	MW - 40M - 60W	1.445

Total Length: 355.00 ft

Total Volume: 2.714 bbl

Num Fluid Samples: 0

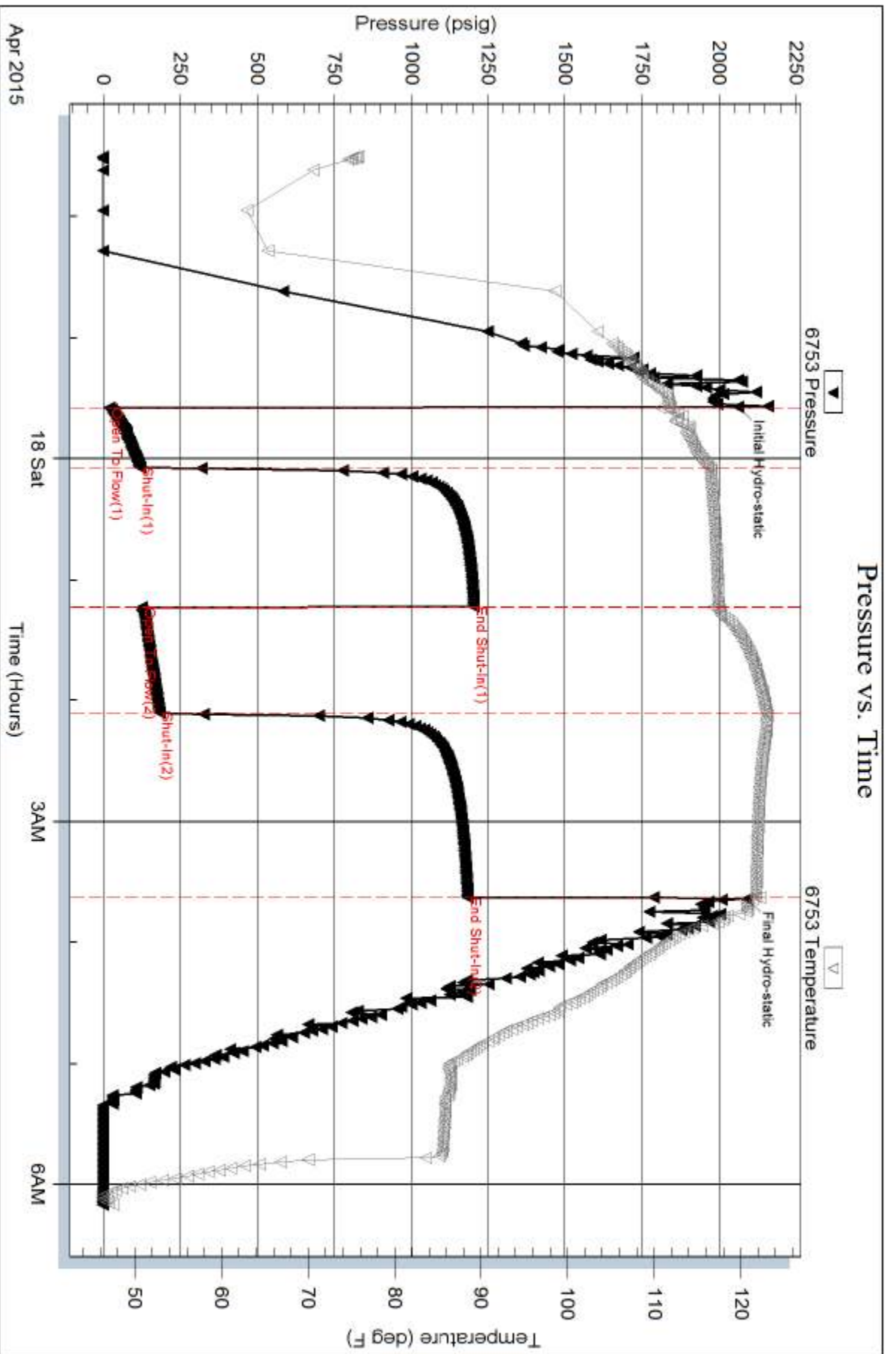
Num Gas Bombs: 0

Serial #:

Laboratory Name:

Laboratory Location:

Recovery Comments:



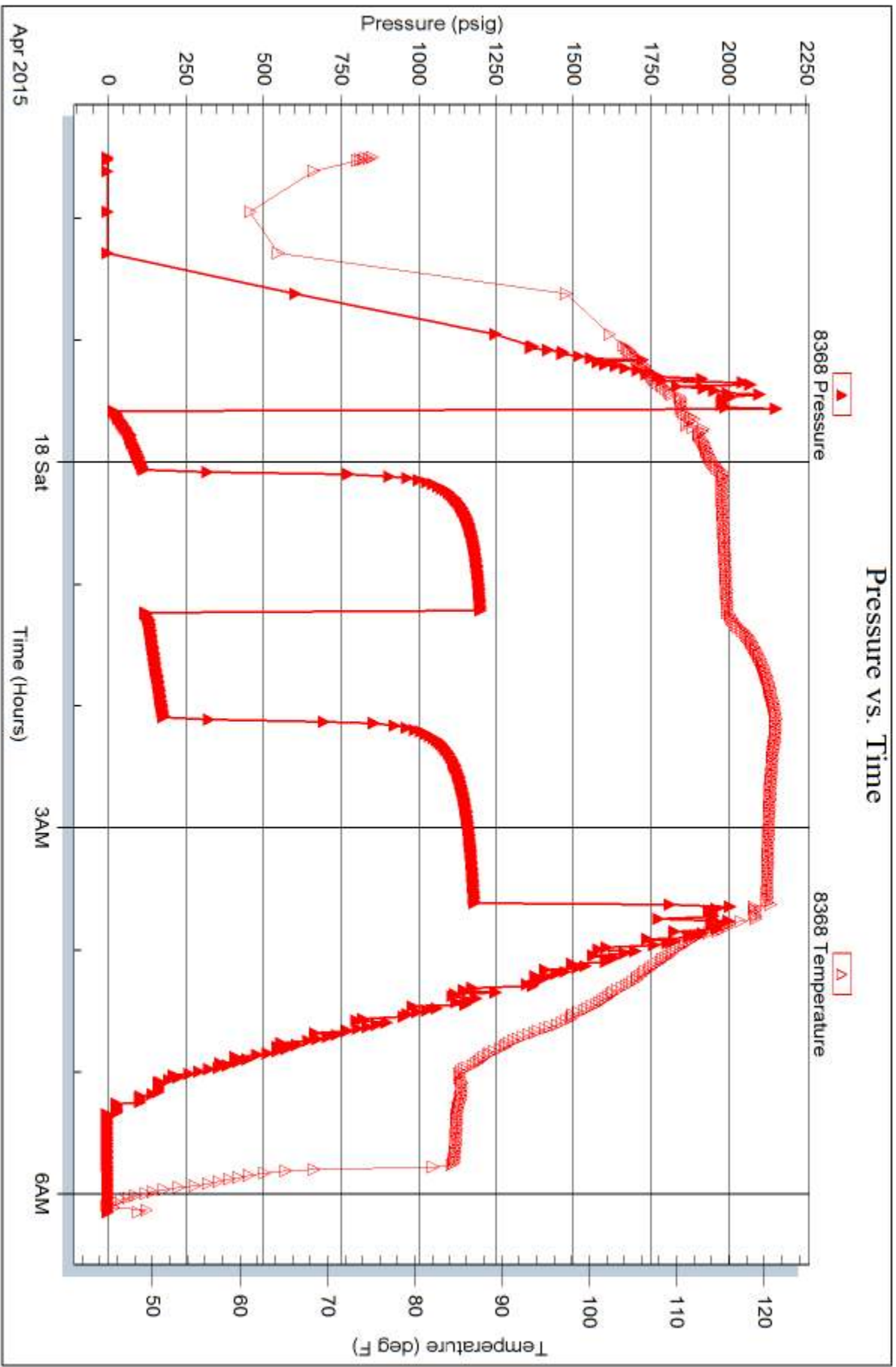
Serial #: 8368

Inside

Murfin Drilling Co., Inc.

Vrbas 'A' #1-25

DST Test Number: 3





TRILOBITE TESTING INC.

1515 Commerce Parkway • Hays, Kansas 67601

Test Ticket

NO. 62362

Well Name & No. Vrbas 'A' #1-25 Test No. 1 Date 4-16-15
 Company Murkin Drilling Co., Inc. Elevation 2881 KB 2876 GL
 Address 250 N. Water, Ste. 300 Wichita Ks 67202
 Co. Rep / Geo. Rocky Milford Rig Murkin #7
 Location: Sec. 25 Twp. 4S Rge. 3/W Co. Rawlins State Ks

Interval Tested 3876-3960 Zone Tested Toronto - Lkc 'B'
 Anchor Length 84 Drill Pipe Run 3611.83' Mud Wt. 8.6
 Top Packer Depth 3871 Drill Collars Run 248.79' Vis 1.86
 Bottom Packer Depth 3876 Wt. Pipe Run ⊕ WL 5.2
 Total Depth 3960 Chlorides 11600 ppm System LCM 3#
 Blow Description IF - surface blow built to a 1/4"
ISI - No Return
FF - No surface blow
FSI - No Return

Rec	Feet of	%gas	%oil	%water	%mud
<u>10'</u>	<u>0sm</u>	<u>spots</u>		<u>100</u>	
Rec	Feet of	%gas	%oil	%water	%mud
Rec	Feet of	%gas	%oil	%water	%mud
Rec	Feet of	%gas	%oil	%water	%mud
Rec	Feet of	%gas	%oil	%water	%mud

Rec Total 10' BHT 115°F Gravity _____ API RW _____ @ _____ °F Chlorides _____ ppm

(A) Initial Hydrostatic <u>1963</u>	<input checked="" type="checkbox"/> Test <u>1050</u>	T-On Location <u>8:10am</u>
(B) First Initial Flow <u>16</u>	<input checked="" type="checkbox"/> Jars <u>250</u>	T-Started <u>8:42am</u>
(C) First Final Flow <u>25</u>	<input checked="" type="checkbox"/> Safety Joint <u>75</u>	T-Open <u>10:46am</u>
(D) Initial Shut-In <u>1137</u>	<input checked="" type="checkbox"/> Circ Sub <u>N/C</u>	T-Pulled <u>2:46pm</u>
(E) Second Initial Flow <u>26</u>	<input type="checkbox"/> Hourly Standby _____	T-Out <u>4:51pm</u>
(F) Second Final Flow <u>32</u>	<input checked="" type="checkbox"/> Mileage <u>44 R/T</u> 44	Comments _____
(G) Final Shut-In <u>1173</u>	<input type="checkbox"/> Sampler _____	<input type="checkbox"/> Ruined Shale Packer _____
(H) Final Hydrostatic <u>1901</u>	<input type="checkbox"/> Straddle _____	<input type="checkbox"/> Ruined Packer _____
Initial Open <u>30</u>	<input type="checkbox"/> Shale Packer _____	<input type="checkbox"/> Extra Copies _____
Initial Shut-In <u>100</u>	<input type="checkbox"/> Extra Packer _____	Sub Total <u>0</u>
Final Flow <u>160</u>	<input type="checkbox"/> Extra Recorder _____	Total <u>1419</u>
Final Shut-In <u>90</u>	<input type="checkbox"/> Day Standby _____	MP/DST Disc't _____
	<input type="checkbox"/> Accessibility _____	
	Sub Total <u>1419</u>	

Approved By _____ Our Representative [Signature]
 TriLOBITE TESTING INC. shall not be liable for damaged of any kind of the property or personnel of the one for whom a test is made, or for any loss suffered or sustained, directly or indirectly, through the use of its equipment, or its statements or opinion concerning the results of any test, tools lost or damaged in the hole shall be paid for at cost by the party for whom the test is made.



TRILOBITE TESTING INC.

1515 Commerce Parkway • Hays, Kansas 67601

Test Ticket

NO. 62363

Well Name & No. Vrbas 'A' #1-25 Test No. 2 Date 4-17-15
 Company Martin Drilling Co., Inc. Elevation 2881 KB 2876 GL
 Address 250 N. Water St. 300 Wichita Ks 67202
 Co. Rep / Geo. Rocky Miford Rig Martin #7
 Location: Sec. 25 Twp. -4S Rge. 3/W Co. Rawlins State Ks

Interval Tested 3976'-4014 Zone Tested LKC - 'E-B'
 Anchor Length 38' Drill Pipe Run 3706.83' Mud Wt. 8.9
 Top Packer Depth 3971 Drill Collars Run 248.79' Vis 50
 Bottom Packer Depth 3976 Wt. Pipe Run 0 WL 6.8
 Total Depth 4014 Chlorides 2200 ppm System LCM 5#
 Blow Description IF - Surface blow built to 6"
ISI - No Return
FF - Surface blow built to 10"
FST - No Return

Rec	Feet of	WM	%gas	%oil	%water	%mud
<u>5'</u>	<u>5'</u>	<u>WM</u>		<u>20</u>	<u>80</u>	
<u>63'</u>	<u>63'</u>	<u>WM</u>		<u>50</u>	<u>50</u>	
<u>63'</u>	<u>63'</u>	<u>MW</u>		<u>90</u>	<u>10</u>	
<u>189'</u>	<u>189'</u>	<u>MW</u>		<u>95</u>	<u>5</u>	

Rec Total 320' BHT 122°F Gravity _____ API RW .167 @ 57 °F Chlorides 62,000 ppm

(A) Initial Hydrostatic 2033 Test 1150 T-On Location 2:00 am
 (B) First Initial Flow 18 Jars 250 T-Started 2:26 am
 (C) First Final Flow 101 Safety Joint 75 T-Open 5:00 am
 (D) Initial Shut-In 1100 Circ Sub N/C T-Pulled 9:10 am
 (E) Second Initial Flow 106 Hourly Standby _____ T-Out 11:21 am
 (F) Second Final Flow 189 Mileage 44 R/T 44 Comments _____
 (G) Final Shut-In 1087 Sampler _____
 (H) Final Hydrostatic 1962 Straddle _____
 Shale Packer _____
 Extra Packer _____
 Extra Recorder _____
 Day Standby _____
 Accessibility _____
 Sub Total 1519

Initial Open 30
 Initial Shut-In 60
 Final Flow 60
 Final Shut-In 90

Ruined Shale Packer _____
 Ruined Packer _____
 Extra Copies _____
 Sub Total 0
 Total 1519
 MP/DST Disc't _____

Approved By _____ Our Representative [Signature]
 Trilobite Testing Inc. shall not be liable for damaged of any kind of the property or personnel of the one for whom a test is made, or for any loss suffered or sustained, directly or indirectly, through the use of its equipment, or its statements or opinion concerning the results of any test, tools lost or damaged in the hole shall be paid for at cost by the party for whom the test is made.



TRILOBITE TESTING INC.

1515 Commerce Parkway • Hays, Kansas 67601

Test Ticket

NO. 62364

Well Name & No. Krbas 'A' # 1-25 Test No. 3 Date 4-17-15
 Company Murfin Drilling Co., Inc. Elevation 2881 KB 2876 GL
 Address 250 N. Water, Ste. 300 Wichita Ks 67202
 Co. Rep / Geo. Rocky Milford Rig Murfin #7
 Location: Sec. 25 Twp. 4S Rge. 31W Co. Rawlins State Ks

Interval Tested 4022-4094 Zone Tested LKC 'H'
 Anchor Length 72' Drill Pipe Run 3770.02 Mud Wt. 9.2
 Top Packer Depth 4017' Drill Collars Run 248.79' Vis 47
 Bottom Packer Depth 4022' Wt. Pipe Run 0 WL 6.4
 Total Depth 4094 Chlorides 2000 ppm System LCM 5#
 Blow Description IF - Surface blow built to 7"
ISI - No return
FF - Surface blow built to 3 1/2"
FBI - No return

Rec	Feet of	%gas	%oil	%water	%mud
<u>63</u>	<u>mW</u>		<u>65</u>	<u>35</u>	
<u>189</u>	<u>mW</u>		<u>90</u>	<u>10</u>	
<u>103</u>	<u>mW</u>		<u>60</u>	<u>40</u>	

Rec Total 355' BHT 721°F Gravity _____ API RW 1.164 @ 47 °F Chlorides 75,000 ppm

(A) Initial Hydrostatic 2061 Test 1150 T-On Location 9:05pm
 (B) First Initial Flow 19 Jars 250 T-Started 9:30pm
 (C) First Final Flow 118 Safety Joint 75 T-Open 11:34pm
 (D) Initial Shut-In 1204 Circ Sub N/C T-Pulled 3:34am
 (E) Second Initial Flow 125 Hourly Standby _____ T-Out 6:1am
 (F) Second Final Flow 182 Mileage 44 RIT 44 Comments picked up tool on
 (G) Final Shut-In 1184 Sampler _____ 44 4-19-15 on location @
 (H) Final Hydrostatic 2091 Straddle _____ 3:55pm left @ 4:43pm
 Shale Packer _____ Ruined Shale Packer _____
 Shale Packer _____ Ruined Packer _____
 Extra Packer _____ Extra Copies _____
 Extra Recorder _____ Sub Total 0
 Day Standby _____ Total 1563
 Accessibility _____ MP/DST Disc't _____
 Sub Total 1563

Approved By _____ Our Representative [Signature]
 Trilobite Testing Inc. shall not be liable for damaged of any kind of the property or personnel of the one for whom a test is made, or for any loss suffered or sustained, directly or indirectly, through the use of its equipment, or its statements or opinion concerning the results of any test, tools lost or damaged in the hole shall be paid for at cost by the party for whom the test is made.