



**TRILOBITE TESTING, INC.**

# DRILL STEM TEST REPORT

Berexco, LLC

**2-1S-36W Rawlins, KS**

2020 N Bramblewood  
Wichita, KS 67206

**Schwerdt #3-1**

Job Ticket: 62241

**DST#: 1**

ATTN: Pete Vollmer

Test Start: 2015.05.18 @ 15:27:00

## GENERAL INFORMATION:

Formation: **LKC "A"**

Deviated: No Whipstock: ft (KB)

Time Tool Opened: 17:16:10

Time Test Ended: 00:37:00

Test Type: Conventional Bottom Hole (Initial)

Tester: Kevin Mack

Unit No: 82

**Interval: 3990.00 ft (KB) To 4080.00 ft (KB) (TVD)**

Reference Elevations: 3102.00 ft (KB)

Total Depth: 4080.00 ft (KB) (TVD)

3089.00 ft (CF)

Hole Diameter: 7.88 inches Hole Condition: Good

KB to GR/CF: 13.00 ft

**Serial #: 8653 Outside**

Press @ Run Depth: 256.44 psig @ 3991.00 ft (KB)

Capacity: 8000.00 psig

Start Date: 2015.05.18

End Date:

2015.05.19

Last Calib.:

2015.05.19

Start Time: 15:28:00

End Time:

00:37:00

Time On Btm:

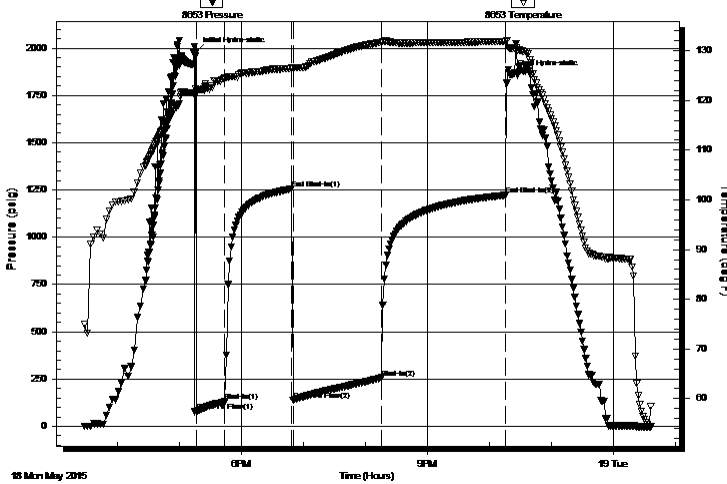
2015.05.18 @ 17:16:00

Time Off Btm:

2015.05.18 @ 22:20:30

**TEST COMMENT:** 30 - IF- 1/2" Blow built to 3 1/4"  
60 - IS- No Return  
90 - FF- Surface Blow Started at 5 min. Built to 7"  
120 - FS- No Return

Pressure vs. Time



## PRESSURE SUMMARY

| Time (Min.) | Pressure (psig) | Temp (deg F) | Annotation           |
|-------------|-----------------|--------------|----------------------|
| 0           | 1980.43         | 122.39       | Initial Hydro-static |
| 1           | 78.09           | 121.40       | Open To Flow (1)     |
| 28          | 130.53          | 124.50       | Shut-In(1)           |
| 93          | 1255.41         | 126.49       | End Shut-In(1)       |
| 94          | 138.61          | 126.43       | Open To Flow (2)     |
| 180         | 256.44          | 131.68       | Shut-In(2)           |
| 300         | 1221.89         | 131.88       | End Shut-In(2)       |
| 305         | 1860.11         | 130.49       | Final Hydro-static   |

## Recovery

| Length (ft) | Description | Volume (bbl) |
|-------------|-------------|--------------|
| 180.00      | MW 20M 80W  | 0.89         |
| 180.00      | WM 20W 80M  | 0.89         |
| 120.00      | Mud 100M    | 0.59         |
|             |             |              |
|             |             |              |

## Gas Rates

|  | Choke (inches) | Pressure (psig) | Gas Rate (Mcf/d) |
|--|----------------|-----------------|------------------|
|  |                |                 |                  |



**TRILOBITE  
TESTING, INC.**

# DRILL STEM TEST REPORT

## FLUID SUMMARY

Berexco, LLC

**2-1S-36W Rawlins, KS**

2020 N Bramblewood  
Wichita, KS 67206

**Schwerdt #3-1**

Job Ticket: 62241

**DST#: 1**

ATTN: Pete Vollmer

Test Start: 2015.05.18 @ 15:27:00

### Mud and Cushion Information

Mud Type: Gel Chem

Cushion Type:

Oil API:

deg API

Mud Weight: 9.00 lb/gal

Cushion Length:

ft

Water Salinity:

58000 ppm

Viscosity: 42.00 sec/qt

Cushion Volume:

bbbl

Water Loss: 7.20 in<sup>3</sup>

Gas Cushion Type:

Resistivity: 0.00 ohm.m

Gas Cushion Pressure:

psig

Salinity: 700.00 ppm

Filter Cake: 2.00 inches

### Recovery Information

Recovery Table

| Length<br>ft | Description | Volume<br>bbbl |
|--------------|-------------|----------------|
| 180.00       | MW 20M 80W  | 0.885          |
| 180.00       | WM 20W 80M  | 0.885          |
| 120.00       | Mud 100M    | 0.590          |

Total Length: 480.00 ft      Total Volume: 2.360 bbl

Num Fluid Samples: 0

Num Gas Bombs: 0

Serial #:

Laboratory Name:

Laboratory Location:

Recovery Comments: RW .16 @ 57 = 58000ppm

