



GEOLOGISTS' REPORT

OPERATOR MURFIN DRILLING COMPANY, INC.

LEASE SCHMIDT-VAP # 4-26

LOCATION 2310 FSL & 2310 FWL

SEC. 26 **TWSP** 4S **RGE** 31W

COUNTY RAWLINS **STATE** KANSAS

FIELD DAISY

CONTRACTOR Murfin Drilling Company

COMMENCED 1 April 2015 **COMPLETED** 8 April 2015

MUD DISPLACED 3200' **MUD TYPE** Chemical

DILLING TIME KEPT FROM 3600 **TO** 4500

SAMPLES SAVED FROM 3630 **TO** 4500

SAMPLES EXAMINED FROM 3630 **TO** 4500

GEOLOGICAL SUPERVISION FROM 3578

GEOLOGIST ON WELL Paul Gunzelman

FORMATION NAME	TOP	DATUM	SAMPLE	ELEVATION
Stone Corral	2672	+253	2675	+250
Base/Anhydrite	2704	+221	2704	+221
Topeka	3738	-813	3738	-813
Heebner Shale	3904	-977	3904	-979
Lansing	3956	-1031	3954	-1029
Stark Shale	4119	-1194	4120	-1195
Base/Kansas City	4170	-1245	4170	-1245
Cherokee	4367	-1443	4367	-1442
Mississippian	4484	-1559	4484	-1559
Total Depth	4502	-1577	4500	-1575

FORMATIONS
Dual Induction
Micro-resistivity
Comp. Sonic

ELECTRICAL SURVEYS:
Pioneer Energy Services
Comp. Neutron Density

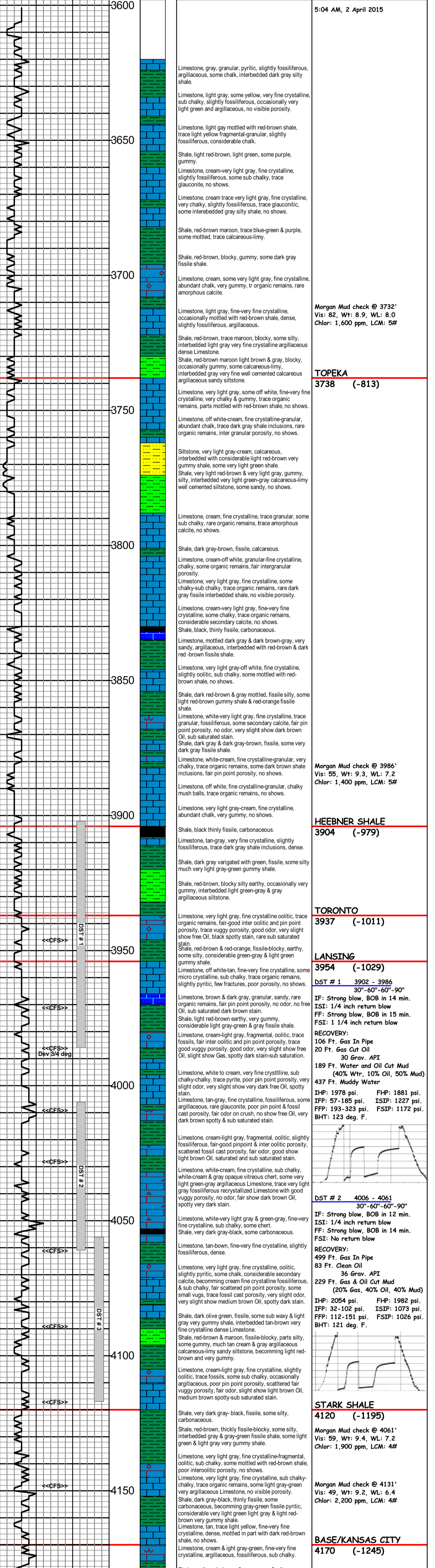
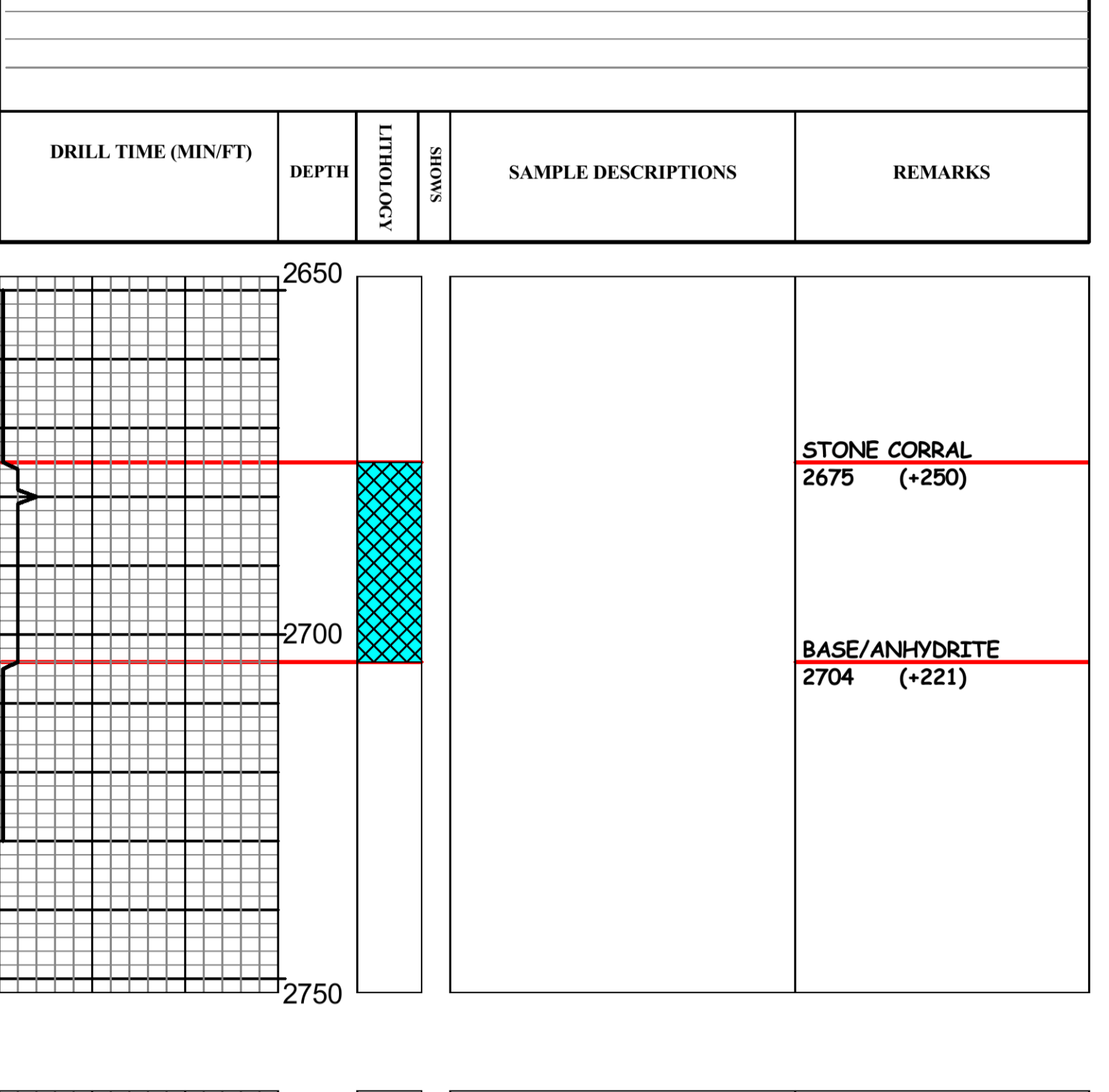
CASING RECORD
Conductor Name
Surface 8 5/8" @ 218
Production 5 1/2" @ 4485'

ELEVATIONS
KB 2925 Ft.
GL 2920 Ft.



REMARKS
API 15-193-21122-00-00
Drilling Fluids: Morgan Mud, Inc. (David Lines, engineer)
Drill Stem Testing: Trilobite Testing, Inc. (Brandon Quintana, tester)
Gas Trailer: No Gas Trailer
Reserve Pit Chlorides: 2,800 PPM

DRILL TIME (MIN/FT)	DEPTH	LITHOLOGY	SHOWS	SAMPLE DESCRIPTIONS	REMARKS
---------------------	-------	-----------	-------	---------------------	---------



Operator: **MURFIN DRILLING COMPANY, INC.**

Lease: **SCHMIDT-VAP # 4-26**

Location: **2310 FSL & 2310 FWL SEC. 26 TWSP 4S RGE 31W**

County: **RAWLINS** State: **KANSAS**