



DRILL STEM TEST REPORT

Prepared For: **F.G.Holl Company L.L.C.**

9431 East Central Suite 100
Wichita ,Kansas 67206-2563

ATTN: Rene Husted

G.B.F #1-12

12-19s-14w Barton

Start Date: 2015.05.06 @ 08:35:00

End Date: 2015.05.06 @ 00:00:00

Job Ticket #: 01031 DST #: 2

Eagle Testers
1309 Patton Road Great Bend, Kansas 67530
620-791-7394

Printed: 2015.05.06 @ 05:12:14



DRILL STEM TEST REPORT

F.G.Holl Company L.L.C.

12-19s-14w Barton

9431 East Central Suite 100
Wichita ,Kansas 67206-2563

G.B.F #1-12

Job Ticket: 01031

DST#: 2

ATTN: Rene Husted

Test Start: 2015.05.06 @ 08:35:00

GENERAL INFORMATION:

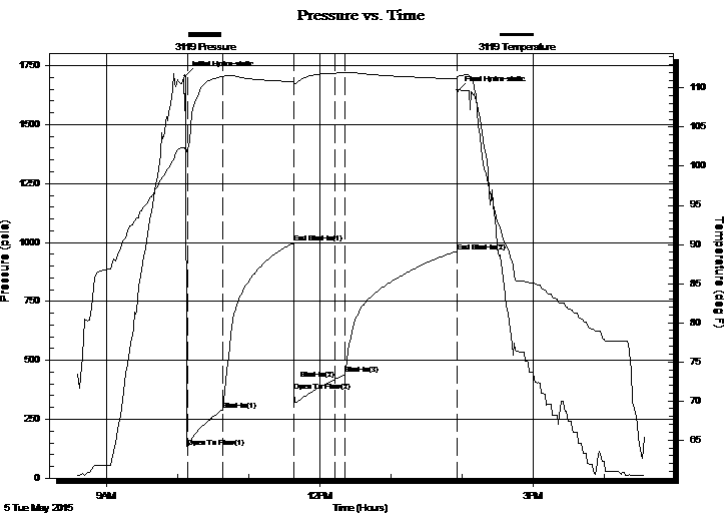
Formation: **Kansas "I-J & K"**
 Deviated: No Whipstock: ft (KB)
 Time Tool Opened: 00:00:00
 Time Test Ended: 00:00:00
 Interval: **3378.00 ft (KB) To 3446.00 ft (KB) (TVD)**
 Total Depth: 3446.00 ft (KB) (TVD)
 Hole Diameter: 788.00 inches Hole Condition: Fair
 Test Type: Conventional Bottom Hole (Initial)
 Tester: Gene Budig
 Unit No: 1
 Reference Elevations: 1886.00 ft (KB)
 1878.00 ft (CF)
 KB to GR/CF: 8.00 ft

Serial #: 3119

Inside

Press@RunDepth: 961.80 psia @ 3440.60 ft (KB) Capacity: 5000.00 psia
 Start Date: 2015.05.05 End Date: 2015.05.05 Last Calib.: 2015.05.06
 Start Time: 08:35:00 End Time: 16:34:00 Time On Btm: 2015.05.05 @ 10:07:00
 Time Off Btm: 2015.05.05 @ 13:56:30

TEST COMMENT: 1st Opening 30 Minutes Good blow built to the bottom of a 5 gallon bucket in 4 minutes
 1st Shut-In 60 Minutes-Good blow back bottom of the bucket
 2nd Opening 45 Minutes-Good blow built to the bottom of a 5 gallon bucket in 4 minutes
 2nd Shut-In 90 Minutes-Good blow back bottom of the bucket



PRESSURE SUMMARY

Time (Min.)	Pressure (psia)	Temp (deg F)	Annotation
0	1706.80	102.57	Initial Hydro-static
2	132.39	102.19	Open To Flow (1)
32	290.46	111.45	Shut-In(1)
91	997.58	110.81	End Shut-In(1)
92	369.97	110.56	Open To Flow (2)
126	418.94	111.90	Shut-In(2)
135	439.82	111.94	Shut-In(3)
229	961.80	111.17	End Shut-In(2)
230	1645.26	111.44	Final Hydro-static

Recovery

Length (ft)	Description	Volume (bbl)
0.00	1600 feet of gas in the pipe	0.00
425.00	slightly mud cut gassy oil	5.96
0.00	20%Gas 70%Oil 5%mud	0.00
180.00	Clean gassy oil 20% Gas 80%Oil	2.52
445.00	Slightly mud cut gassy oil	6.24
0.00	15%Gas 75%Oil 10%Mud	0.00

Gas Rates

	Choke (inches)	Pressure (psia)	Gas Rate (Mcf/d)



DRILL STEM TEST REPORT

F.G.Holl Company L.L.C.

12-19s-14w Barton

9431 East Central Suite 100
Wichita ,Kansas 67206-2563

G.B.F #1-12

Job Ticket: 01031

DST#: 2

ATTN: Rene Husted

Test Start: 2015.05.06 @ 08:35:00

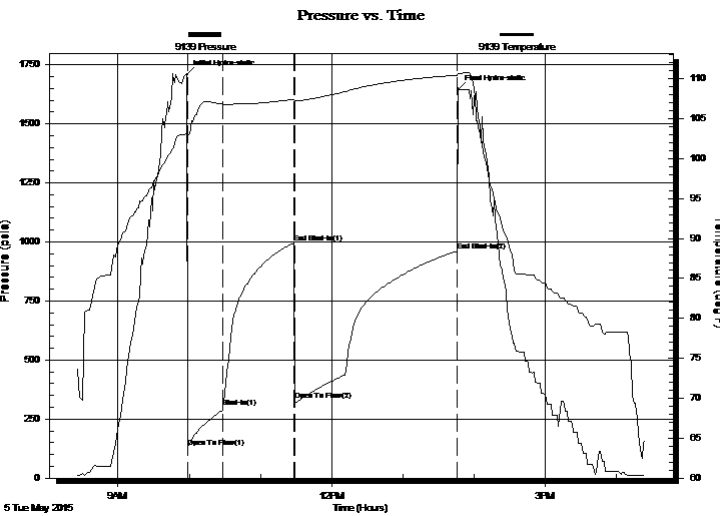
GENERAL INFORMATION:

Formation: **Kansas "I-J & K"**
 Deviated: No Whipstock: ft (KB)
 Time Tool Opened: 00:00:00
 Time Test Ended: 00:00:00
 Interval: **3378.00 ft (KB) To 3446.00 ft (KB) (TVD)**
 Total Depth: 3446.00 ft (KB) (TVD)
 Hole Diameter: 788.00 inches Hole Condition: Fair
 Test Type: Conventional Bottom Hole (Initial)
 Tester: Gene Budig
 Unit No: 1
 Reference Elevations: 1886.00 ft (KB)
 1878.00 ft (CF)
 KB to GR/CF: 8.00 ft

Serial #: 9139 Outside

Press@RunDepth: 960.54 psia @ 3440.60 ft (KB) Capacity: 5000.00 psia
 Start Date: 2015.05.05 End Date: 2015.05.05 Last Calib.: 2015.05.06
 Start Time: 08:25:00 End Time: 16:24:30 Time On Btm: 2015.05.05 @ 09:58:00
 Time Off Btm: 2015.05.05 @ 13:47:00

TEST COMMENT: 1st Opening 30 Minutes Good blow built to the bottom of a 5 gallon bucket in 4 minutes
 1st Shut-In 60 Minutes-Good blow back bottom of the bucket
 2nd Opening 45 Minutes-Good blow built to the bottom of a 5 gallon bucket in 4 minutes
 2nd Shut-In 90 Minutes-Good blow back bottom of the bucket



PRESSURE SUMMARY

Time (Min.)	Pressure (psia)	Temp (deg F)	Annotation
0	1707.73	103.19	Initial Hydro-static
1	130.99	102.75	Open To Flow (1)
31	301.35	106.85	Shut-In(1)
90	996.03	107.44	End Shut-In(1)
91	329.05	107.26	Open To Flow (2)
228	960.54	110.44	End Shut-In(2)
229	1646.50	110.67	Final Hydro-static

Recovery

Length (ft)	Description	Volume (bbl)
0.00	1600 fett of gas in the pipe	0.00
425.00	slightly mud cut gassy oil	5.96
0.00	20%Gas 70%Ouil 5%mud	0.00
180.00	Clean gassy oil 20% Gas 80%Oil	2.52
445.00	Slightly mud cut gassy oil	6.24
0.00	15%Gas 75%Oil 10%Mud	0.00

Gas Rates

	Choke (inches)	Pressure (psia)	Gas Rate (Mcf/d)



DRILL STEM TEST REPORT

TOOL DIAGRAM

F.G.Holl Company L.L.C.

12-19s-14w Barton

9431 East Central Suite 100
Wichita ,Kamsas 67206-2563

G.B.F #1-12

Job Ticket: 01031

DST#: 2

ATTN: Rene Husted

Test Start: 2015.05.06 @ 08:35:00

Tool Information

Drill Pipe:	Length: 3373.00 ft	Diameter: 3.80 inches	Volume: 47.31 bbl	Tool Weight: 2000.00 lb
Heavy Wt. Pipe:	Length: 0.00 ft	Diameter: 0.00 inches	Volume: 0.00 bbl	Weight set on Packer: 20000.00 lb
Drill Collar:	Length: 0.00 ft	Diameter: 2.25 inches	Volume: 0.00 bbl	Weight to Pull Loose: 720000.0 lb
			Total Volume: 47.31 bbl	Tool Chased 0.00 ft
Drill Pipe Above KB:	24.00 ft			String Weight: Initial 62000.00 lb
Depth to Top Packer:	3378.00 ft			Final 62000.00 lb
Depth to Bottom Packer:	ft			
Interval between Packers:	67.60 ft			
Tool Length:	96.60 ft			
Number of Packers:	2	Diameter: 6.75 inches		

Tool Comments:

Tool Description

Tool Description	Length (ft)	Serial No.	Position	Depth (ft)	Accum. Lengths
Shut In Tool	5.00			3354.00	
Hydraulic tool	5.00			3359.00	
Jars	7.00			3366.00	
Safety Joint	2.00		Fluid	3368.00	
Top Packer	5.00			3373.00	
Packer	5.00			3378.00	29.00 Bottom Of Top Packer
Anchor	5.00			3383.00	
Change Over Sub	0.75		Inside	3383.75	
Drill Pipe	31.10			3414.85	
Change Over Sub	0.75			3415.60	
Anchor	25.00			3440.60	
Recorder	0.00	3119	Inside	3440.60	
Recorder	0.00	9139	Outside	3440.60	
Bullnose	5.00			3445.60	67.60 Anchor Tool

Total Tool Length: 96.60



DRILL STEM TEST REPORT

FLUID SUMMARY

F.G.Holl Company L.L.C.

12-19s-14w Barton

9431 East Central Suite 100
Wichita ,Kamsas 67206-2563

G.B.F #1-12

Job Ticket: 01031

DST#: 2

ATTN: Rene Husted

Test Start: 2015.05.06 @ 08:35:00

Mud and Cushion Information

Mud Type: Gel Chem
Mud Weight: 9.00 lb/gal
Viscosity: 71.00 sec/qt
Water Loss: 7.20 in³
Resistivity: ohm.m
Salinity: 3500.00 ppm
Filter Cake: 1.00 inches

Cushion Type:
Cushion Length: ft
Cushion Volume: bbl
Gas Cushion Type:
Gas Cushion Pressure: psia

Oil API: 39 deg API
Water Salinity: ppm

Recovery Information

Recovery Table

Length ft	Description	Volume bbl
0.00	1600 fett of gas in the pipe	0.000
425.00	slightly mud cut gassy oil	5.962
0.00	20%Gas 70%Ouill 5%mud	0.000
180.00	Clean gassy oil 20% Gas 80%Oil	2.525
445.00	Slightly mud cut gassy oil	6.242
0.00	15%Gas 75%Oil 10%Mud	0.000
0.00	Oil Gravity 39 Corrected	0.000

Total Length: 1050.00 ft Total Volume: 14.729 bbl

Num Fluid Samples: 0

Num Gas Bombs: 0

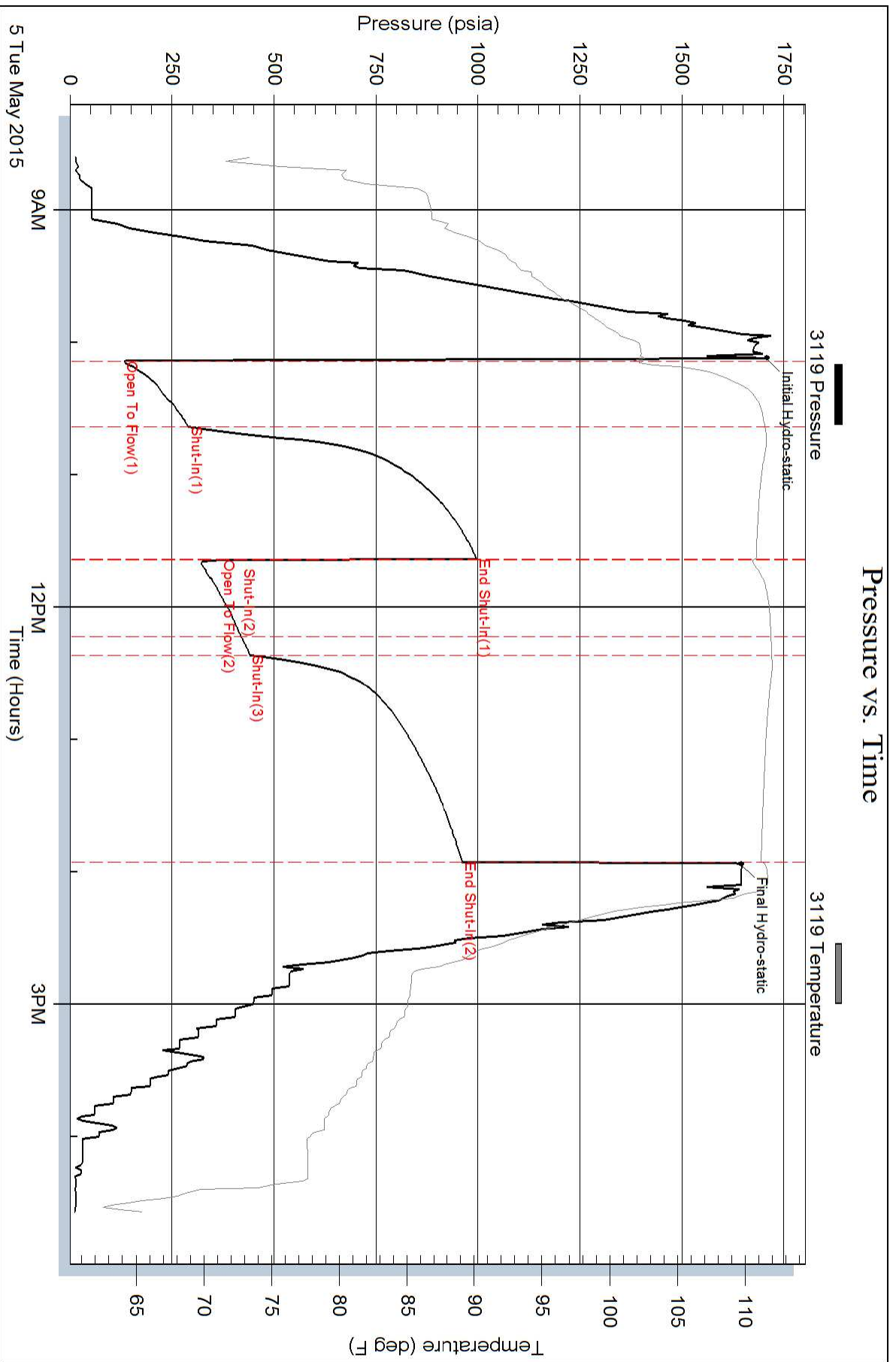
Serial #:

Laboratory Name:

Laboratory Location:

Recovery Comments:

Pressure vs. Time



Pressure vs. Time

