



## DRILL STEM TEST REPORT

Prepared For: **F.G.Holl Company L.L.C.**

9431 East Central Suite 100  
Wichita ,Kansas 67206-2563

ATTN: Rene Husted

**G.B.F #1-12**

**12-19s-14w Barton**

Start Date: 2015.05.07 @ 20:50:00

End Date: 2015.05.08 @ 01:11:30

Job Ticket #: 01035                      DST #: 5

Eagle Testers  
1309 Patton Road    Great Bend, Kansas 67530  
620-791-7394

Printed: 2015.05.08 @ 01:32:46



# DRILL STEM TEST REPORT

F.G.Holl Company L.L.C.

12-19s-14w Barton

9431 East Central Suite 100  
Wichita ,Kansas 67206-2563

G.B.F #1-12

Job Ticket: 01035

DST#: 5

ATTN: Rene Husted

Test Start: 2015.05.07 @ 20:50:00

## GENERAL INFORMATION:

Formation: **Arbuckle**

Deviated: No Whipstock: ft (KB)

Time Tool Opened: 22:28:30

Time Test Ended: 01:11:30

Test Type: Conventional Bottom Hole (Initial)

Tester: Gene Budig

Unit No: 1

Interval: **3510.00 ft (KB) To 3517.00 ft (KB) (TVD)**

Reference Elevations: 1886.00 ft (KB)

Total Depth: 3517.00 ft (KB) (TVD)

1878.00 ft (CF)

Hole Diameter: 788.00 inches Hole Condition: Fair

KB to GR/CF: 8.00 ft

Serial #: **3139** Outside

Press@RunDepth: 1193.34 psia @ 3512.00 ft (KB)

Capacity: 5000.00 psia

Start Date: 2015.05.07

End Date: 2015.05.08

Last Calib.: 2015.05.08

Start Time: 20:50:00

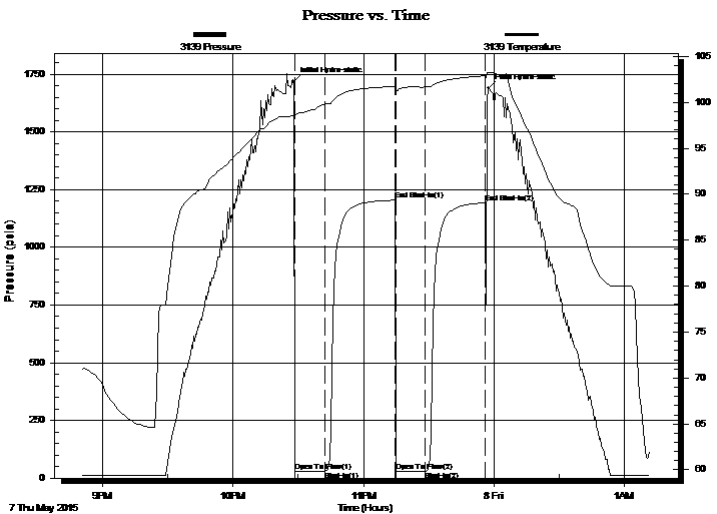
End Time: 01:11:30

Time On Btm: 2015.05.07 @ 22:28:00

Time Off Btm: 2015.05.07 @ 23:57:30

TEST COMMENT: 1st Opening 15 Minutes Weak blow for 9 minutes and died  
1st Shut-In 30 minutes  
2nd Opening 15 Minutes-No blow  
2nd Shut-In 30 Minutes

## PRESSURE SUMMARY



Time (Min.)	Pressure (psia)	Temp (deg F)	Annotation
0	1717.64	98.67	Initial Hydro-static
1	27.68	98.40	Open To Flow (1)
15	29.02	99.82	Shut-In(1)
47	1204.40	101.74	End Shut-In(1)
47	29.46	101.16	Open To Flow (2)
61	30.20	101.67	Shut-In(2)
88	1193.34	102.90	End Shut-In(2)
90	1687.48	103.23	Final Hydro-static

## Recovery

Length (ft)	Description	Volume (bbl)
5.00	slighlty oil cut muf	0.07

## Gas Rates

Choke (inches)	Pressure (psia)	Gas Rate (Mcf/d)



# DRILL STEM TEST REPORT

F.G.Holl Company L.L.C.

12-19s-14w Barton

9431 East Central Suite 100  
Wichita ,Kansas 67206-2563

G.B.F #1-12

Job Ticket: 01035

DST#: 5

ATTN: Rene Husted

Test Start: 2015.05.07 @ 20:50:00

## GENERAL INFORMATION:

Formation: **Arbuckle**

Deviated: No Whipstock: ft (KB)

Time Tool Opened: 22:28:30

Time Test Ended: 01:11:30

Test Type: Conventional Bottom Hole (Initial)

Tester: Gene Budig

Unit No: 1

Interval: **3510.00 ft (KB) To 3517.00 ft (KB) (TVD)**

Reference Elevations: 1886.00 ft (KB)

Total Depth: 3517.00 ft (KB) (TVD)

1878.00 ft (CF)

Hole Diameter: 788.00 inches Hole Condition: Fair

KB to GR/CF: 8.00 ft

Serial #: **9139** Outside

Press@RunDepth: 1194.40 psia @ 3512.00 ft (KB)

Capacity: 5000.00 psia

Start Date: 2015.05.07 End Date: 2015.05.08

Last Calib.: 2015.05.08

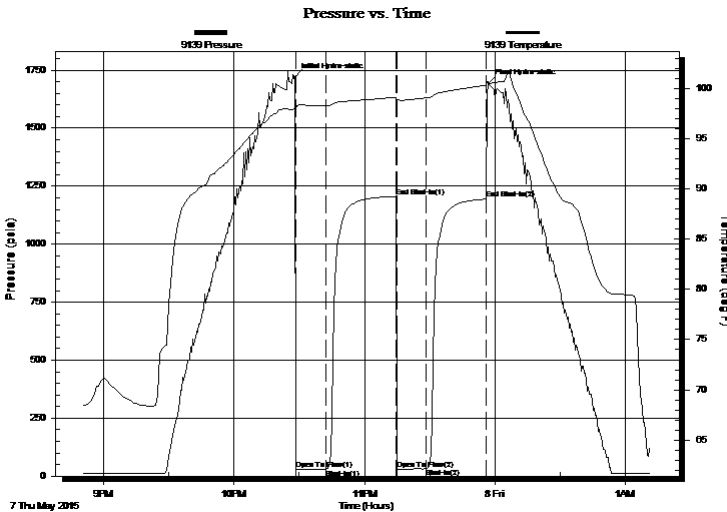
Start Time: 20:50:00 End Time: 01:11:30

Time On Btm: 2015.05.07 @ 22:28:00

Time Off Btm: 2015.05.07 @ 23:57:00

TEST COMMENT: 1st Opening 15 Minutes Weak blow for 9 minutes and died  
1st Shut-In 30 minutes  
2nd Opening 15 Minutes-No blow  
2nd Shut-In 30 Minutes

## PRESSURE SUMMARY



Time (Min.)	Pressure (psia)	Temp (deg F)	Annotation
0	1719.97	98.05	Initial Hydro-static
1	28.62	98.06	Open To Flow (1)
15	30.17	98.33	Shut-In(1)
47	1205.59	99.16	End Shut-In(1)
47	30.50	98.78	Open To Flow (2)
61	31.34	99.09	Shut-In(2)
88	1194.40	100.37	End Shut-In(2)
89	1692.71	100.52	Final Hydro-static

## Recovery

Length (ft)	Description	Volume (bbl)
5.00	slighlty oil cut muf	0.07

## Gas Rates

Choke (inches)	Pressure (psia)	Gas Rate (Mcf/d)



# DRILL STEM TEST REPORT

TOOL DIAGRAM

F.G.Holl Company L.L.C.

12-19s-14w Barton

9431 East Central Suite 100  
Wichita ,Kamsas 67206-2563

G.B.F #1-12

Job Ticket: 01035

DST#: 5

ATTN: Rene Husted

Test Start: 2015.05.07 @ 20:50:00

## Tool Information

Drill Pipe:	Length: 3497.00 ft	Diameter: 3.80 inches	Volume: 49.05 bbl	Tool Weight:	2000.00 lb
Heavy Wt. Pipe:	Length: 0.00 ft	Diameter: 0.00 inches	Volume: 0.00 bbl	Weight set on Packer:	20000.00 lb
Drill Collar:	Length: 0.00 ft	Diameter: 2.25 inches	Volume: 0.00 bbl	Weight to Pull Loose:	72000.00 lb
			<u>Total Volume: 49.05 bbl</u>	Tool Chased	0.00 ft
Drill Pipe Above KB:	16.00 ft			String Weight: Initial	60000.00 lb
Depth to Top Packer:	3510.00 ft			Final	60000.00 lb
Depth to Bottom Packer:	ft				
Interval between Packers:	7.00 ft				
Tool Length:	36.00 ft				
Number of Packers:	2	Diameter: 6.75 inches			

Tool Comments:

## Tool Description

Tool Description	Length (ft)	Serial No.	Position	Depth (ft)	Accum. Lengths
Shut In Tool	5.00			3486.00	
Hydraulic tool	5.00			3491.00	
Jars	7.00			3498.00	
Safety Joint	2.00		Fluid	3500.00	
Top Packer	5.00			3505.00	
Packer	5.00			3510.00	29.00 Bottom Of Top Packer
Anchor	2.00			3512.00	
Recorder	0.00	9119	Inside	3512.00	
Recorder	0.00	3139	Outside	3512.00	
Bullnose	5.00			3517.00	7.00 Anchor Tool
<b>Total Tool Length:</b>	<b>36.00</b>				



# DRILL STEM TEST REPORT

## FLUID SUMMARY

F.G.Holl Company L.L.C.

**12-19s-14w Barton**

9431 East Central Suite 100  
Wichita ,Kansas 67206-2563

**G.B.F #1-12**

Job Ticket: 01035

**DST#: 5**

ATTN: Rene Husted

Test Start: 2015.05.07 @ 20:50:00

### Mud and Cushion Information

Mud Type: Gel Chem  
Mud Weight: 9.00 lb/gal  
Viscosity: 42.00 sec/qt  
Water Loss: 7.60 in<sup>3</sup>  
Resistivity: ohm.m  
Salinity: 4600.00 ppm  
Filter Cake: 1.00 inches

Cushion Type:  
Cushion Length: ft  
Cushion Volume: bbl  
Gas Cushion Type:  
Gas Cushion Pressure: psia

Oil API: deg API  
Water Salinity: ppm

### Recovery Information

Recovery Table

Length ft	Description	Volume bbl
5.00	slighlgy oil cut muf	0.070

Total Length: 5.00 ft      Total Volume: 0.070 bbl

Num Fluid Samples: 0

Num Gas Bombs: 0

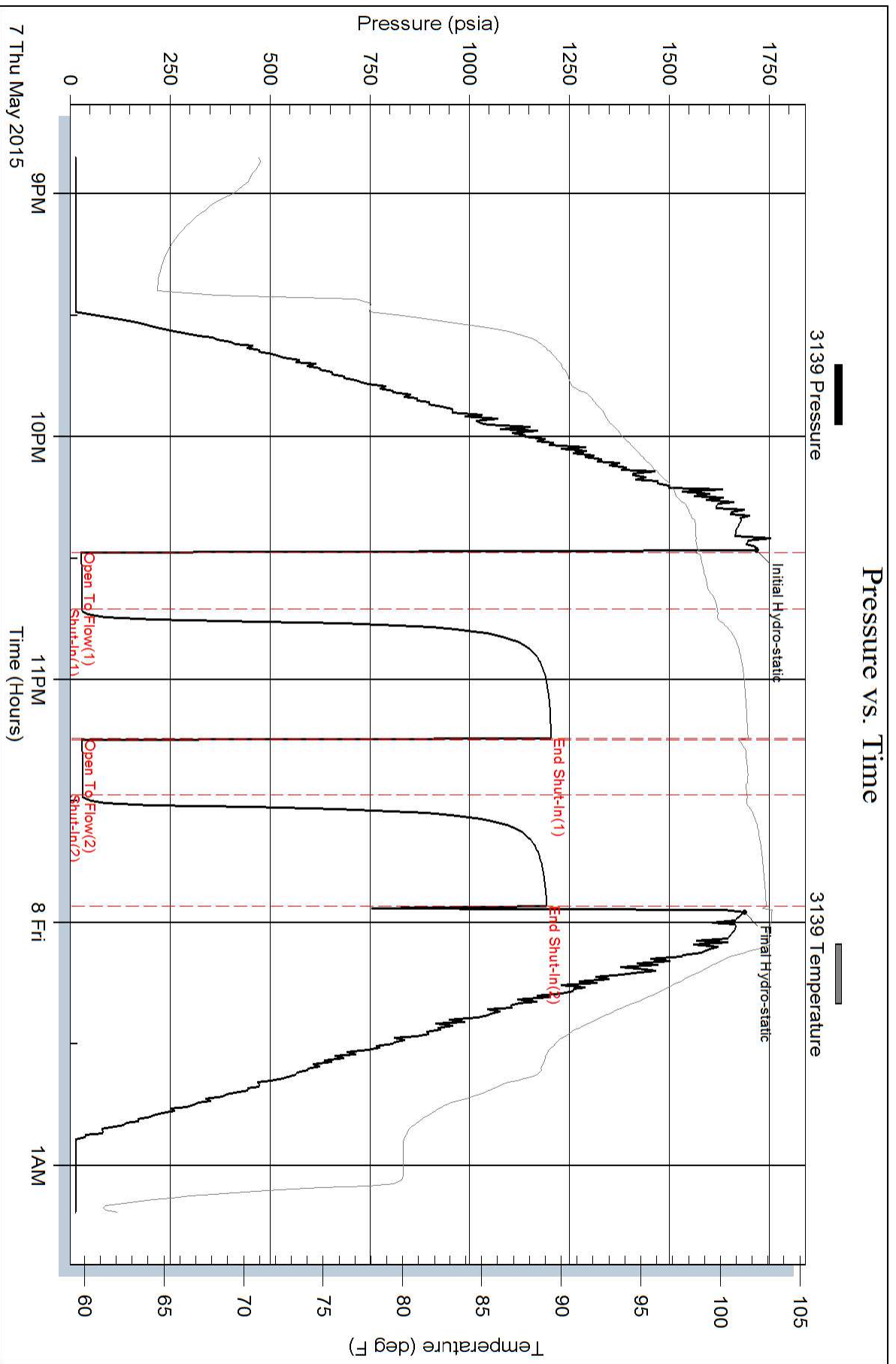
Serial #:

Laboratory Name:

Laboratory Location:

Recovery Comments:

### Pressure vs. Time



### Pressure vs. Time

