



# TEMPORARY ABANDONMENT WELL APPLICATION

OPERATOR: License# \_\_\_\_\_  
 Name: \_\_\_\_\_  
 Address 1: \_\_\_\_\_  
 Address 2: \_\_\_\_\_  
 City: \_\_\_\_\_ State: \_\_\_\_\_ Zip: \_\_\_\_\_ + \_\_\_\_\_  
 Contact Person: \_\_\_\_\_  
 Phone: ( \_\_\_\_\_ ) \_\_\_\_\_  
 Contact Person Email: \_\_\_\_\_  
 Field Contact Person: \_\_\_\_\_  
 Field Contact Person Phone: ( \_\_\_\_\_ ) \_\_\_\_\_

API No. 15- \_\_\_\_\_  
 Spot Description: \_\_\_\_\_  
 \_\_\_\_\_ - \_\_\_\_\_ - \_\_\_\_\_ - \_\_\_\_\_ Sec. \_\_\_\_\_ Twp. \_\_\_\_\_ S. R. \_\_\_\_\_  E  W  
 \_\_\_\_\_ feet from  N /  S Line of Section  
 \_\_\_\_\_ feet from  E /  W Line of Section  
 GPS Location: Lat: \_\_\_\_\_, Long: \_\_\_\_\_  
(e.g. xx.xxxxx) (e.g. -xxx.xxxxx)  
 Datum:  NAD27  NAD83  WGS84  
 County: \_\_\_\_\_ Elevation: \_\_\_\_\_  GL  KB  
 Lease Name: \_\_\_\_\_ Well #: \_\_\_\_\_  
 Well Type: (check one)  Oil  Gas  OG  WSW  Other: \_\_\_\_\_  
 SWD Permit #: \_\_\_\_\_  ENHR Permit #: \_\_\_\_\_  
 Gas Storage Permit #: \_\_\_\_\_  
 Spud Date: \_\_\_\_\_ Date Shut-In: \_\_\_\_\_

	Conductor	Surface	Production	Intermediate	Liner	Tubing
Size						
Setting Depth						
Amount of Cement						
Top of Cement						
Bottom of Cement						

Casing Fluid Level from Surface: \_\_\_\_\_ How Determined? \_\_\_\_\_ Date: \_\_\_\_\_

Casing Squeeze(s): \_\_\_\_\_ to \_\_\_\_\_ w / \_\_\_\_\_ sacks of cement, \_\_\_\_\_ to \_\_\_\_\_ w / \_\_\_\_\_ sacks of cement. Date: \_\_\_\_\_  
(top) (bottom) (top) (bottom)

Do you have a valid Oil & Gas Lease?  Yes  No

Depth and Type:  Junk in Hole at \_\_\_\_\_  Tools in Hole at \_\_\_\_\_ Casing Leaks:  Yes  No Depth of casing leak(s): \_\_\_\_\_  
(depth) (depth)

Type Completion:  ALT. I  ALT. II Depth of:  DV Tool: \_\_\_\_\_ w / \_\_\_\_\_ sacks of cement  Port Collar: \_\_\_\_\_ w / \_\_\_\_\_ sack of cement  
(depth) (depth)

Packer Type: \_\_\_\_\_ Size: \_\_\_\_\_ Inch Set at: \_\_\_\_\_ Feet

Total Depth: \_\_\_\_\_ Plug Back Depth: \_\_\_\_\_ Plug Back Method: \_\_\_\_\_

**Geological Data:**

Formation Name	Formation Top	Formation Base	Completion Information
1. _____	At: _____	to _____ Feet	Perforation Interval _____ to _____ Feet or Open Hole Interval _____ to _____ Feet
2. _____	At: _____	to _____ Feet	Perforation Interval _____ to _____ Feet or Open Hole Interval _____ to _____ Feet

~~UNDER PENALTY OF PERJURY I HEREBY ATTEST THAT THE INFORMATION CONTAINED HEREIN IS TRUE AND CORRECT TO THE BEST OF MY KNOWLEDGE~~

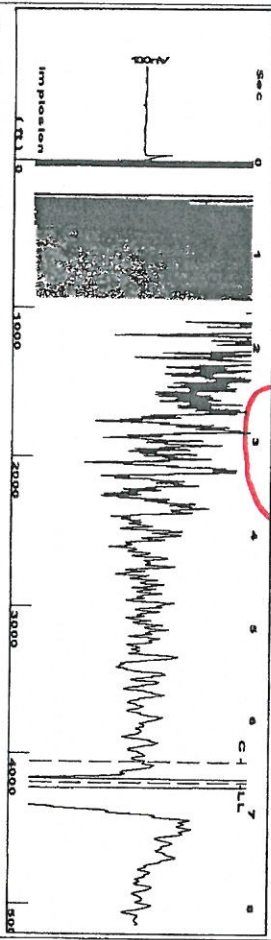
Submitted Electronically

<b>Do NOT Write in This Space - KCC USE ONLY</b>	Date Tested: _____	Results: _____	Date Plugged: _____	Date Repaired: _____	Date Put Back in Service: _____
	Review Completed by: _____ Comments: _____				
TA Approved: <input type="checkbox"/> Yes <input type="checkbox"/> Denied Date: _____					

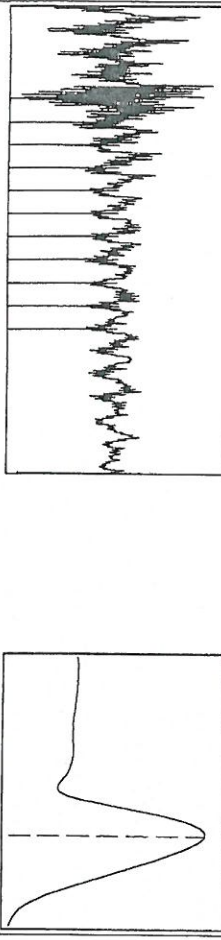
**Mail to the Appropriate KCC Conservation Office:**

	KCC District Office #1 - 210 E. Frontview, Suite A, Dodge City, KS 67801	Phone 620.225.8888
	KCC District Office #2 / UPGS - 3450 N. Rock Road, Building 600, Suite 601, Wichita, KS 67226	Phone 316.630.4000
	KCC District Office #3 - 1500 SW Seventh Steet, Chanute, KS 66720	Phone 620.432.2300
	KCC District Office #4 - 2301 E. 13th Street, Hays, KS 67601-2651	Phone 785.625.0550

Group: Pickrell Drilling Well: Shea-Nicholas (acquired on: 06/25/15 14:25:24)



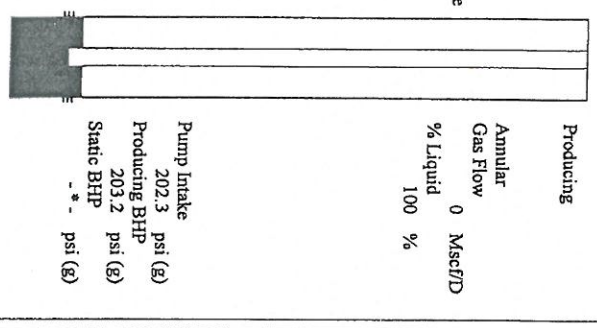
Filter Type High Pass  
 Manual Acoustic Velo 1232.32 ft/s  
 Automatic Collar Count Yes  
 Manual JTS/sec 20.202  
 Time 6.683 sec  
 Joints 137.515 Jts  
 Depth 4194.20 ft



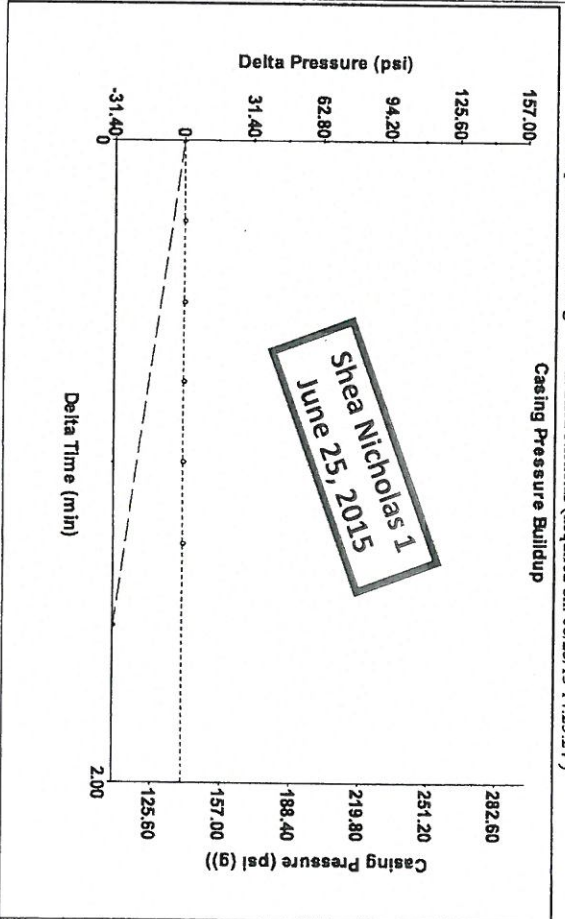
Analysis Method: Automatic

Group: Pickrell Drilling Well: Shea-Nicholas (acquired on: 06/25/15 14:25:24)

Production Current	Potential	Casing Pressure	Producing
Oil -*- BBL/D	-*- BBL/D	139.8 psi (g)	0 Misc/D
Water -*- BBL/D	-*- BBL/D	Casing Pressure Buildup	Gas Flow
Gas -*- Misc/D	-*- Misc/D	-31.271 psi	% Liquid
IPR Method	Vogel	1.50 min	100 %
PBH/BHP	-*-	Gas/Liquid Interface Pressure	
Production Efficiency	0.0	136.8 psi (g)	
Oil 40 deg API		Liquid Level Depth	
Water 1.05 Sp.Gr.:H2O		4194.20 ft	
Gas 0.73 Sp.Gr.:AIR		Pump Intake Depth	
Acoustic Velocity	1255.18 ft/s	4330.00 ft	
		Formation Depth	
		4332.00 ft	
Formation Submergence			
Total Gaseous Liquid Column HT (TVD)			
Equivalent Gas Free Liquid HT (TVD)			
Acoustic Test			

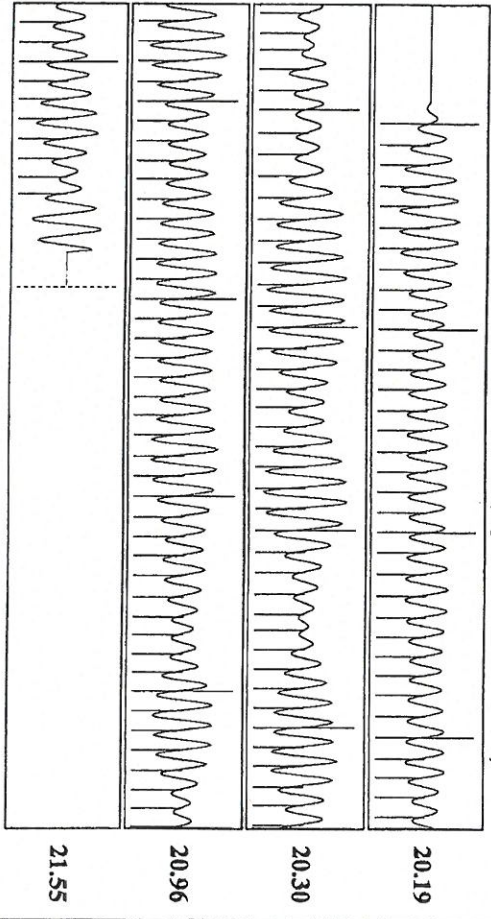


Group: Pickrell Drilling Well: Shea-Nicholas (acquired on: 06/25/15 14:25:24)



Change in Pressure -31.27 psi  
 Change in Time 1.50 min  
 PT4212  
 Range 0 - ? psi

Group: Pickrell Drilling Well: Shea-Nicholas (acquired on: 06/25/15 14:25:24)



Acoustic Velocity	1255.18 ft/s	Joints counted	127
Joints Per Second	20.5768 ft/sec	Joints to liquid level	137.515
Depth to liquid level	4194.2 ft	Filter Width	18.202
Automatic Collar Count	Yes	Time to 1st Collar	0.288

June 25, 2015

**Temporary Abandonments**

API 15-095-01211-00-00

Shea Nicholas #1

SW/4 Sec. 30-30S-08W

API 15-095-21590-00-00

Young JJ Unit #2

NW/4 Sec. 24-29S-08W

Both in Kingman County, Kansas

Kansas Corporation Commission  
District #2  
3450 N. Rock Road, Suite 601  
Wichita, Kansas 67226

Gentlemen:

This is a resubmittal of earlier Applications which were denied due to lack of fluid level tests which have now been ran and are being submitted with these new applications.

Yours very truly,

PICKRELL DRILLING COMPANY, INC.

---

Jack Gurley

Conservation Division  
District Office No. 2  
3450 N. Rock Road  
Building 600, Suite 601  
Wichita, KS 67226



Phone: 316-630-4000  
Fax: 316-630-4005  
<http://kcc.ks.gov/>

Shari Feist Albrecht, Chair  
Jay Scott Emler, Commissioner  
Pat Apple, Commissioner

Sam Brownback, Governor

August 12, 2015

Jack Gurley  
Pickrell Drilling Company, Inc.  
100 S MAIN STE 505  
WICHITA, KS 67202-3738

Re: Temporary Abandonment  
API 15-095-01211-00-00  
Shea-Nicholas 1  
SW/4 Sec.30-30S-08W  
Kingman County, Kansas

Dear Jack Gurley:

"Your temporary abandonment (TA) application for the well listed above has been approved. In accordance with K.A.R. 82-3-111 the TA status of this well will expire 08/12/2016.

- \* If you return this well to service or plug it, please notify the District Office.
- \* If you sell this well you are required to file a Transfer of Operator form, T-1.
- \* If the well will remain temporarily abandoned, you must submit a new TA application, CP-111, before 08/12/2016.

You may contact me at the number above if you have questions.

Very truly yours,

BJ Hope"