



REMIT TO  
 Consolidated Oil Well Services, LLC  
 Dept:970  
 P.O.Box 4346  
 Houston, TX 77210-4346

RECEIVED  
 FEB 17 2015

MAIN OFFICE

P.O.Box884  
 Chanute,KS 66720  
 620/431-9210,1-800/467-8676  
 Fax 620/431-0012

Invoice

Invoice# 803378

Invoice Date: 02/12/15

Terms: Net 30

Page 1

PALOMINO PETROLEUM, INC.

4924 SE 84TH STREET  
 NEWTON KS 67114-8827  
 USA

BROCE #1

Part No	Description	Quantity	Unit Price	Discount(%)	Total
5401S	Cement Pump Truck - Surface	1.000	1,150.0000	10.000	1,035.00
5406	Mileage Charge	35.000	5.2500	10.000	165.38
5407A	Ton Mileage Delivery Charge	273.000	1.7500	10.000	429.98
1104S	Class A Cement	165.000	18.5500	10.000	2,754.68
1102	Calcium Chloride (50#)	500.000	0.9400	10.000	423.00
1118B	Premium Gel / Bentonite	350.000	0.2700	10.000	85.05
1107	Flo-Seal	100.000	2.9700	10.000	267.30
Subtotal					5,733.75
Discounted Amount					573.38
SubTotal After Discount					5,160.37
Amount Due 5,974.97 If paid after 03/14/15					
Tax:					217.10
Total:					5,377.49



**CONSOLIDATED**  
Oil Well Services, LLC

PO Box 884, Chanute, KS 66720  
620-431-9210 or 800-467-8676

12126  
HT 2067

TICKET NUMBER 48334  
LOCATION El Dorado  
FOREMAN Fuzzy

INVOICE #803370

**FIELD TICKET & TREATMENT REPORT**  
**CEMENT**

KS

DATE	CUSTOMER #	WELL NAME & NUMBER	SECTION	TOWNSHIP	RANGE	COUNTY
2-11-15	6285	Brace #1	14	16S	25W	WESS
CUSTOMER PA Lawrence Petroleum			Arnold			
MAILING ADDRESS 4924 SE 84th			2W-112W			
CITY Newton			5.11			
STATE KS		ZIP CODE 67114				
TRUCK #		DRIVER		TRUCK #		DRIVER
603		Tracy				
611		Austin				

JOB TYPE surface HOLE SIZE 12 1/4 HOLE DEPTH 218' CASING SIZE & WEIGHT 8 9/8  
 CASING DEPTH 218' DRILL PIPE \_\_\_\_\_ TUBING \_\_\_\_\_ OTHER \_\_\_\_\_  
 SLURRY WEIGHT 14.7 SLURRY VOL 1.36 WATER gal/sk 6.5 CEMENT LEFT in CASING 20'  
 DISPLACEMENT 12.6 DISPLACEMENT PSI \_\_\_\_\_ MIX PSI \_\_\_\_\_ RATE \_\_\_\_\_

REMARKS: Safety meeting on W-W #10. Rig up and circulate,  
Mix 165 SFS CLASS A' 390cc 129cc w/ 1/2" poly flake,  
Displace 12 1/2 BBL and gelatin.

Cement did circulate approx 3 BBLs to pit

Thanks Fuzzy  
+ crew

ACCOUNT CODE	QUANTITY or UNITS	DESCRIPTION of SERVICES or PRODUCT	UNIT PRICE	TOTAL
54015	1	PUMP CHARGE	1150.00	1150.00
5406	35	MILEAGE	5.25	183.75
5407A	7.8 ton	Team Mileage, Delivery	1.25	477.75
11044/3164	165 SFS	CLASS A'	18.55	3060.75
1102	500 #	Calcium Chloride	.94	470.00
1118B	350 #	Gel	.27	94.50
1107	100 #	Poly flake	2.97	297.00
		Subtotal		5733.75
		10% disc		573.37
		Subtotal		5160.39
		6.15% SALES TAX		217.10
		ESTIMATED TOTAL		5377.49

Ravin 3737

AUTHORIZATION

TITLE TP

DATE 2-11-15

I acknowledge that the payment terms, unless specifically amended in writing on the front of the form or in the customer's account records, at our office, and conditions of service on the back of this form are in effect for services identified on this form

## TERMS

In consideration of the prices to be charged for Consolidated Oil Well Services, LLC (COWS) services, equipment and products and for the performance of services and supplying of materials, Customer agrees to the following terms and conditions.

Terms. Cash in advance unless satisfactory credit is established. On credit sales, invoices are payable within 30 days of the invoice date. On all invoices not paid within 30 days, Customer agrees to pay COWS interest at the rate of 18% per annum or the maximum rate allowed by law, whichever is higher. In the event COWS retains an attorney to pursue collection of any account, Customer agrees to pay all collection costs and attorney's fees incurred by COWS.

Any applicable federal, state or local sales, use occupation, consumer's or emergency taxes shall be added to the quoted price. All process license fees required to be paid to others will be added to the scheduled prices.

All COWS' prices are subject to change without notice.

## SERVICE CONDITIONS

Customer warrants that the well is in proper condition to receive the services, equipment, products and materials to be supplied by COWS. The Customer shall at all time have complete care, custody, and control of the well, the drilling and production equipment at the well, and the premises about the well. A responsible representative of the Customer shall be present to specify depths, pressures, or materials used for any service which is to be performed.

(a) COWS shall not be responsible for any claim, cause of action or demand (hereinafter referred to as a 'claim') for damage to property, or injury to or death of employees and representatives, of Customer or the well owner (if different from Customer), unless such damage, injury or death is caused by the willful misconduct or gross negligence of COWS, including but not limited to sub-surface damage and surface damage arising from sub-surface damage.

(b) Unless a claim is the result of the sole willful misconduct or gross negligence of COWS, Customer shall be responsible for and indemnify and hold COWS harmless from any claim for: (1) reservoir loss or damage, or property damage resulting from sub-surface pressure, losing control of the well and/or a well blowout; (2) damages as a result of a subsurface trespass, or an action in the nature thereof, arising from a service operation performed by COWS; (3) injury to or death of persons, other than employees of COWS, or damage to property (including, but not limited to, injury to the well), or any damages whatsoever, irrespective of cause, growing out of or in any way connected with the use of radioactive material in the well hole; and (4) well damage or reservoir damage caused by (i) loss of circulation, cement invasion, cement misplacement, pumping cement or cement plugs on wells with loss of circulation, including the failure to displace plug to proper depth, (ii) sub-surface pressure and resulting failure to complete pumping of cement or cement plug, including dehydration of cement slurry or flashing, plugged float shoe, annulus bridging or plugging, or (iii) down hole tools being lost or left in the well, or becoming stuck in the well for any reason and by any cause. COWS may furnish down hole tools and may supply supervision for the running and placement of such tools but will not be liable for any damage, loss or result caused by the use of such tools.

Furthermore, Customer will be responsible for the cost to replace such tools if they are lost or left in the well.

(c) COWS makes no guarantee of the effectiveness of any COWS' products, supplies or materials, or the results of any COWS' treatment or services.

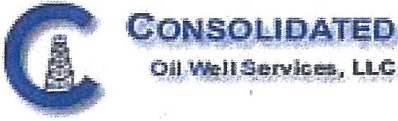
(d) Because of the uncertainty of variable well conditions and the necessity of relying on facts and supporting services furnished by others, COWS is unable to guarantee the accuracy of any chart interpretation, research analysis, job recommendation or other data furnished by COWS. COWS' personnel will use their best efforts in gathering such information and their best judgement in interpreting it, but Customer agrees that COWS shall not be responsible for any damage arising from the use of such information except where due to COWS' gross negligence or willful misconduct in the preparation or furnishing of it.

(e) COWS may buy and re-sell to Customer down hole equipment, including but not limited to float equipment, DV tools, port collars, type A & B packers, and Customer agrees that COWS is not an agent or dealer for the companies who manufacture such items, and further agrees that Customer shall be solely responsible for and indemnify COWS against any claim with regard to the effectiveness, malfunction of, or functionality of such items.

## WARRANTIES - LIMITATION OF LIABILITY

COWS warrants title to the products, supplies and materials, and that the same are free from defects in workmanship and materials. THERE ARE NO OTHER WARRANTIES, EXPRESS OR IMPLIED, NOR ANY WARRANTY OF MERCHANTABILITY OR FITNESS FOR PURPOSE, WHICH EXTEND BEYOND THOSE STATED IN THE IMMEDIATELY PRECEDING SENTENCE. COWS's liability and Customer's exclusive remedy in any claim (whether in contract, tort, breach of warranty or otherwise,) arising out of the sale or use of any COWS' products, supplies, materials or services is expressly limited to the replacement of such products, supplies, materials or services or their return to COWS or, at COWS' option, an allowance to Customer of credit for the cost of such items.

Customer waives and releases all claims against COWS for any special, incidental, indirect, consequential or punitive damages.



REMIT TO  
 Consolidated Oil Well Services, LLC  
 Dept:970  
 P.O.Box 4346  
 Houston, TX 77210-4346

MAIN OFFICE

P.O.Box884  
 Chanute, KS 66720  
 620/431-9210, 1-800/467-8676  
 Fax 620/431-0012

Invoice

Invoice#

803462

Invoice Date: 02/20/15

Terms: Net 30

Page 1

PALOMINO PETROLEUM, INC.  
 4924 SE 84TH STREET  
 NEWTON KS 67114-8827  
 USA

**RECEIVED**  
**FEB 23 2015**

BROCE #1

Part No	Description	Quantity	Unit Price	Discount(%)	Total
5405A	P & A Old Wells	1.000	1,395.0000	15.000	1,185.75
5406	Mileage Charge	30.000	5.2500	15.000	133.88
5407A	Ton Mileage Delivery Charge	1.000	632.1000	15.000	537.29
1131	60/40 Poz Mix	280.000	15.8600	15.000	3,774.68
1118B	Premium Gel / Bentonite	1,123.000	0.2700	15.000	257.73
1107	Flo-Seal	70.000	2.9700	15.000	176.72
1111	Sodium Chloride (Granulated Salt)	100.000	0.0000	0.000	0.00

Subtotal 7,136.51  
 Discounted Amount 1,070.48  
 SubTotal After Discount 6,066.03  
 Amount Due 7,441.05 If paid after 03/22/15

Tax: 258.86  
 Total: 6,324.91



PO Box 884, Chanute, KS 66720  
620-431-9210 or 800-467-8676

**FIELD TICKET & TREATMENT REPORT  
CEMENT**

2209

3304

TICKET NUMBER

46770

LOCATION

Oakley

2150

Invoice # 803462

FOREMAN

Kelly Gabel

KS

DATE	CUSTOMER #	WELL NAME & NUMBER	SECTION	TOWNSHIP	RANGE	COUNTY	
2-20-15	6285	Broce #1	14	16 <sup>3</sup>	25 <sup>W</sup>	Ness	
CUSTOMER Palomino		aprod 2 N 3/4 W Sinto		TRUCK #	DRIVER	TRUCK #	DRIVER
MAILING ADDRESS				445	Jordan		
CITY		STATE		693	Larry		
ZIP CODE							

JOB TYPE PTA HOLE SIZE 7 7/8 HOLE DEPTH 4617 CASING SIZE & WEIGHT \_\_\_\_\_  
 CASING DEPTH \_\_\_\_\_ DRILL PIPE \_\_\_\_\_ TUBING \_\_\_\_\_ OTHER \_\_\_\_\_  
 SLURRY WEIGHT \_\_\_\_\_ SLURRY VOL \_\_\_\_\_ WATER gal/sk \_\_\_\_\_ CEMENT LEFT in CASING \_\_\_\_\_  
 DISPLACEMENT \_\_\_\_\_ DISPLACEMENT PSI \_\_\_\_\_ MIX PSI \_\_\_\_\_ RATE \_\_\_\_\_

REMARKS: safety meeting, rigged up on wtw #10, mixed cement plugs + displaced as ordered  
50 @ 2380  
80 @ 1430  
50 @ 700  
50 @ 270  
20 @ 60  
30 RH 280 SKS 60/40 Poz 4oz gel 1/4" flo seal

*Thank you  
Kelly + crew*

ACCOUNT CODE	QUANTITY or UNITS	DESCRIPTION of SERVICES or PRODUCT	UNIT PRICE	TOTAL
5405A	1	PUMP CHARGE	1395.00	1395.00
5406	30 mi	MILEAGE	5.25	157.50
5407A	12.04	Ton mileage delivery	1.75	632.10
1131	280 SKS	60/40 Poz	15.86	4448.80
1183	1123 #	Gel	.27	303.21
1107	70 #	Flo-seal	2.97	207.90
1111	100 #	salt	NC	NC
			sub	7136.51
			Less 1570	1070.48
			TOTAL	6066.03
			SALES TAX	258.86
			ESTIMATED TOTAL	6324.91

Ravin 3737

AUTHORIZATION

TITLE

TR

DATE

2-20-15

I acknowledge that the payment terms, unless specifically amended in writing on the front of the form or in the customer's account records, at our office, and conditions of service on the back of this form are in effect for services identified on this form.

## TERMS

In consideration of the prices to be charged for Consolidated Oil Well Services, LLC (COWS) services, equipment and products and for the performance of services and supplying of materials, Customer agrees to the following terms and conditions.

**Terms.** Cash in advance unless satisfactory credit is established. On credit sales, invoices are payable within 30 days of the invoice date. On all invoices not paid within 30 days, Customer agrees to pay COWS interest at the rate of 18% per annum or the maximum rate allowed by law, whichever is higher. In the event COWS retains an attorney to pursue collection of any account, Customer agrees to pay all collection costs and attorney's fees incurred by COWS.

Any applicable federal, state or local sales, use occupation, consumer's or emergency taxes shall be added to the quoted price. All process license fees required to be paid to others will be added to the scheduled prices.

All COWS' prices are subject to change without notice.

## SERVICE CONDITIONS

Customer warrants that the well is in proper condition to receive the services, equipment, products and materials to be supplied by COWS. The Customer shall at all time have complete care, custody, and control of the well, the drilling and production equipment at the well, and the premises about the well. A responsible representative of the Customer shall be present to specify depths, pressures, or materials used for any service which is to be performed.

(a) COWS shall not be responsible for any claim, cause of action or demand (hereinafter referred to as a 'claim') for damage to property, or injury to or death of employees and representatives, of Customer or the well owner (if different from Customer), unless such damage, injury or death is caused by the willful misconduct or gross negligence of COWS, including but not limited to sub-surface damage and surface damage arising from sub-surface damage.

(b) Unless a claim is the result of the sole willful misconduct or gross negligence of COWS, Customer shall be responsible for and indemnify and hold COWS harmless from any claim for: (1) reservoir loss or damage, or property damage resulting from sub-surface pressure, losing control of the well and/or a well blowout; (2) damages as a result of a subsurface trespass, or an action in the nature thereof, arising from a service operation performed by COWS; (3) injury to or death of persons, other than employees of COWS, or damage to property (including, but not limited to, injury to the well), or any damages whatsoever, irrespective of cause, growing out of or in any way connected with the use of radioactive material in the well hole; and (4) well damage or reservoir damage caused by (i) loss of circulation, cement invasion, cement misplacement, pumping cement or cement plugs on wells with loss of circulation, including the failure to displace plug to proper depth, (ii) sub-surface pressure and resulting failure to complete pumping of cement or cement plug, including dehydration of cement slurry or flashing, plugged float shoe, annulus bridging or plugging, or (iii) down hole tools being lost or left in the well, or becoming stuck in the well for any reason and by any cause. COWS may furnish down hole tools and may supply supervision for the running and placement of such tools but will not be liable for any damage, loss or result caused by the use of such tools.

Furthermore, Customer will be responsible for the cost to replace such tools if they are lost or left in the well.

(c) COWS makes no guarantee of the effectiveness of any COWS' products, supplies or materials, or the results of any COWS' treatment or services.

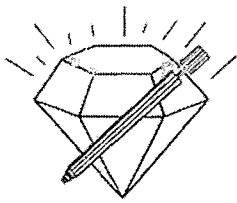
(d) Because of the uncertainty of variable well conditions and the necessity of relying on facts and supporting services furnished by others, COWS is unable to guarantee the accuracy of any chart interpretation, research analysis, job recommendation or other data furnished by COWS. COWS' personnel will use their best efforts in gathering such information and their best judgement in interpreting it, but Customer agrees that COWS shall not be responsible for any damage arising from the use of such information except where due to COWS' gross negligence or willful misconduct in the preparation or furnishing of it.

(e) COWS may buy and re-sell to Customer down hole equipment, including but not limited to float equipment, DV tools, port collars, type A & B packers, and Customer agrees that COWS is not an agent or dealer for the companies who manufacture such items, and further agrees that Customer shall be solely responsible for and indemnify COWS against any claim with regard to the effectiveness, malfunction of, or functionality of such items.

## WARRANTIES - LIMITATION OF LIABILITY

COWS warrants title to the products, supplies and materials, and that the same are free from defects in workmanship and materials. THERE ARE NO OTHER WARRANTIES, EXPRESS OR IMPLIED, NOR ANY WARRANTY OF MERCHANTABILITY OR FITNESS FOR PURPOSE, WHICH EXTEND BEYOND THOSE STATED IN THE IMMEDIATELY PRECEDING SENTENCE. COWS's liability and Customer's exclusive remedy in any claim (whether in contract, tort, breach of warranty or otherwise,) arising out of the sale or use of any COWS' products, supplies, materials or services is expressly limited to the replacement of such products, supplies, materials or services or their return to COWS or, at COWS' option, an allowance to Customer of credit for the cost of such items.

Customer waives and releases all claims against COWS for any special, incidental, indirect, consequential or punitive damages.



**DIAMOND TESTING, LLC**  
P.O. Box 157  
**HOISINGTON, KANSAS 67544**  
(620) 653-7550 • (800) 542-7313  
BROCE1DST1

Company Palomino Petroleum, Inc. Lease & Well No. Broce No. 1  
Elevation 2552 KB Formation Mississippi Effective Pay \_\_\_\_\_ Ft. Ticket No. T442  
Date 2-19-15 Sec. 14 Twp. 16S Range 25W County Ness State Kansas  
Test Approved By Ryan Seib Diamond Representative Tim Venters

Formation Test No. 1 Interval Tested from 4,455 ft. to 4,529 ft. Total Depth 4,529 ft.  
Packer Depth 4,450 ft. Size 6 3/4 in. Packer Depth \_\_\_\_\_ ft. Size \_\_\_\_\_ in.  
Packer Depth 4,455 ft. Size 6 3/4 in. Packer Depth \_\_\_\_\_ ft. Size \_\_\_\_\_ in.  
Depth of Selective Zone Set \_\_\_\_\_ ft.

Top Recorder Depth (Inside) 4,436 ft. Recorder Number 5504 Cap. 5,000 psi.  
Bottom Recorder Depth (Outside) 4,526 ft. Recorder Number 11029 Cap. 5,025 psi.  
Below Straddle Recorder Depth \_\_\_\_\_ ft. Recorder Number \_\_\_\_\_ Cap. \_\_\_\_\_ psi.

Drilling Contractor WW Drilling, LLC - Rig 10 Drill Collar Length 123 ft I.D. 2 1/4 in.  
Mud Type Chemical Viscosity 57 Weight Pipe Length \_\_\_\_\_ ft I.D. \_\_\_\_\_ in.  
Weight 9.2 Water Loss 6.8 cc. Drill Pipe Length 4,299 ft I.D. 3 1/2 in.  
Chlorides 2,100 P.P.M. Test Tool Length 33 ft Tool Size 3 1/2-IF in.  
Jars: Make Sterling Serial Number 2 Anchor Length 42' perf. w/32' drill pipe Size 4 1/2-FH in.  
Did Well Flow? No Reversed Out No Surface Choke Size 1 in. Bottom Choke Size 5/8 in.  
Main Hole Size 7 7/8 in. Tool Joint Size 4 1/2-XH in.

Blow: 1st Open: Weak, 1/4 in. blow increasing to 3 ins. No blow back during shut-in.  
2nd Open: Very weak, surface blow increasing to 1 in. No blow back during shut-in.

Recovered 1 ft. of clean oil = .014230 bbls.  
Recovered 124 ft. of slightly oil cut mud = .619390 bbls. (Grind out: 4%-oil; 96%-mud)  
Recovered 125 ft. of TOTAL FLUID = .633620 bbls.  
Recovered \_\_\_\_\_ ft. of \_\_\_\_\_  
Recovered \_\_\_\_\_ ft. of \_\_\_\_\_  
Recovered \_\_\_\_\_ ft. of \_\_\_\_\_

Remarks Tool Sample Grind Out: 11%-oil; 89%-mud

Time Set Packer(s) 12:39 A.M. Time Started off Bottom 3:39 A.M. Maximum Temperature 116°  
Initial Hydrostatic Pressure.....(A) 2213 P.S.I.  
Initial Flow Period.....Minutes 30 (B) 29 P.S.I. to (C) 58 P.S.I.  
Initial Closed In Period.....Minutes 30 (D) 766 P.S.I.  
Final Flow Period.....Minutes 60 (E) 61 P.S.I. to (F) 82 P.S.I.  
Final Closed In Period.....Minutes 60 (G) 716 P.S.I.  
Final Hydrostatic Pressure.....(H) 2191 P.S.I.

# DIAMOND TESTING

## General Information Report

### General Information

Company Name PALOMINO PETROLEUM, INC.  
 Contact KLEE WATCHOUS  
 Well Name BROCE #1  
 Unique Well ID DST #1, MISSISSIPPIAN, 4455-4529  
 Surface Location SEC 14-16S-25W, NESS CO. KS.  
 Field SARGENT  
 Well Type Vertical  
 Test Type CONVENTIONAL  
 Formation DST #1, MISSISSIPPIAN, 4455-4529  
 Well Fluid Type 01 Oil

Representative TIM VENTERS  
 Well Operator PALOMINO PETROLEUM, INC.  
 Report Date 2015/02/19  
 Prepared By TIM VENTERS  
 Qualified By RYAN SEIB

Start Test Date 2015/02/18  
 Final Test Date 2015/02/19

Start Test Time 22:10:00  
 Final Test Time 05:59:00

### Test Recovery:

RECOVERED: 1' CLEAN OIL  
 124' SOCM, 4% OIL, 96% MUD  
 125' TOTAL FLUID

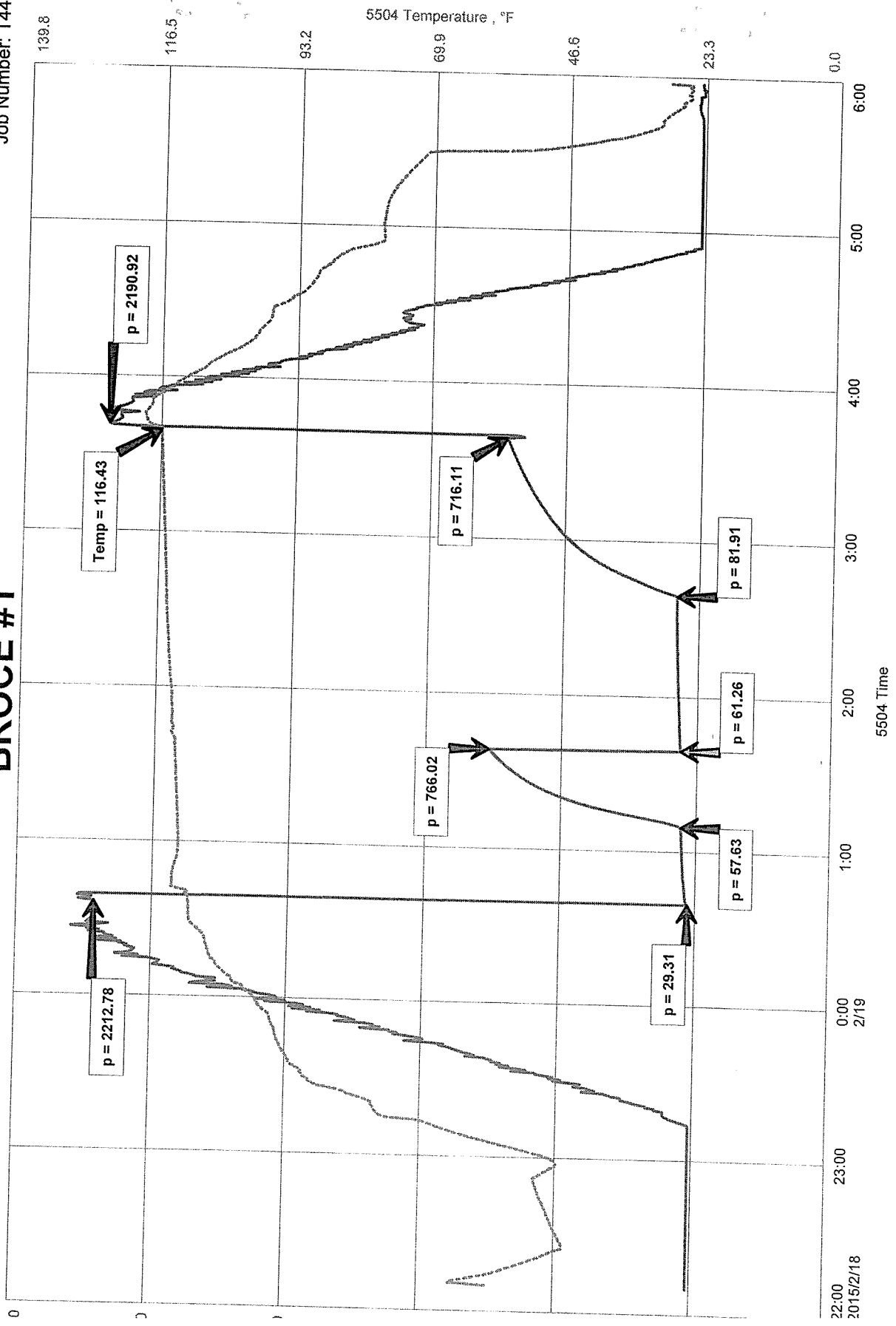
TOOL SAMPLE: 11% OIL, 89% MUD

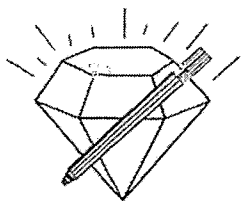


MINO PETROLEUM, INC.  
#1, MISSISSIPPIAN, 4455-4529  
Test Date: 2015/02/18  
Test Date: 2015/02/19

BROCE #1  
Formation: DST #1, MISSISSIPPIAN, 4455-4529  
Pool: SARGENT  
Job Number: T442

# BROCE #1





**DIAMOND TESTING, LLC**  
P.O. Box 157  
**HOISINGTON, KANSAS 67544**  
(620) 653-7550 • (800) 542-7313  
BROCE1DST2

Company Palomino Petroleum, Inc. Lease & Well No. Broce No. 1  
Elevation 2552 KB Formation Mississippi Effective Pay          Ft. Ticket No. T443  
Date 2-19-15 Sec. 14 Twp. 16S Range 25W County Ness State Kansas  
Test Approved By Ryan Seib Diamond Representative Tim Venters

Formation Test No. 2 Interval Tested from 4,527 ft. to 4,537 ft. Total Depth 4,537 ft.  
Packer Depth 4,522 ft. Size 6 3/4 in. Packer Depth          ft. Size          in.  
Packer Depth 4,527 ft. Size 6 3/4 in. Packer Depth          ft. Size          in.  
Depth of Selective Zone Set          ft.

Top Recorder Depth (Inside) 4,508 ft. Recorder Number 5504 Cap. 5,000 psi.  
Bottom Recorder Depth (Outside) 4,534 ft. Recorder Number 11029 Cap. 5,025 psi.  
Below Straddle Recorder Depth          ft. Recorder Number          Cap.          psi.

Drilling Contractor WW Drilling, LLC - Rig 10 Drill Collar Length 123 ft I.D. 2 1/4 in.  
Mud Type Chemical Viscosity 55 Weight Pipe Length          ft I.D.          in.  
Weight 9.3 Water Loss 7.2 cc. Drill Pipe Length 4,371 ft I.D. 3 1/2 in.  
Chlorides 2,900 P.P.M. Test Tool Length 33 ft Tool Size 3 1/2-IF in.  
Jars: Make Sterling Serial Number 2 Anchor Length 10 ft. Size 4 1/2-FH in.  
Did Well Flow? No Reversed Out No Surface Choke Size 1 in. Bottom Choke Size 5/8 in.  
Main Hole Size 7 7/8 in. Tool Joint Size 4 1/2-XH in.

Blow: 1st Open: Weak, 1 in. blow increasing to 3 ins. No blow back during shut-in.  
2nd Open: Weak, surface blow increasing to 2 ins. No blow back during shut-in.

Recovered 70 ft. of heavy mud cut water w/trace oil = .409570 bbls. (Grind out: Trace-oil; 60%-water; 40%-mud)  
Recovered 60 ft. of water cut mud w/trace oil = .295200 bbls. (Grind out: Trace-oil; 37%-water; 63%-mud)  
Recovered 130 ft. of TOTAL FLUID = .704770 bbls.  
Recovered          ft. of           
Recovered          ft. of           
Recovered          ft. of         

Remarks Tool Sample Grind Out: 2%-oil; 61%-water; 37%-mud (Chlorides: 13,000 Ppm PH: 7.0 RW: .70 @ 66°)

Time Set Packer(s) 1:22 P.M. Time Started off Bottom 4:22 P.M. Maximum Temperature 115°  
Initial Hydrostatic Pressure.....(A) 2219 P.S.I.  
Initial Flow Period.....Minutes 30 (B) 35 P.S.I. to (C) 59 P.S.I.  
Initial Closed In Period.....Minutes 30 (D) 527 P.S.I.  
Final Flow Period.....Minutes 60 (E) 63 P.S.I. to (F) 80 P.S.I.  
Final Closed In Period.....Minutes 60 (G) 664 P.S.I.  
Final Hydrostatic Pressure.....(H) 2213 P.S.I.

# DIAMOND TESTING

## General Information Report

### General Information

Company Name PALOMINO PETROLEUM, INC.  
 Contact KLEE WATCHOUS  
 Well Name BROCE #1  
 Unique Well ID DST #2, MISSISSIPPIAN, 4527-4537  
 Surface Location SEC 14-16S-25W, NESS CO. KS.  
 Field SARGENT  
 Well Type Vertical  
 Test Type CONVENTIONAL  
 Formation DST #2, MISSISSIPPIAN, 4527-4537  
 Well Fluid Type 01 Oil

Representative TIM VENTERS  
 Well Operator PALOMINO PETROLEUM, INC.  
 Report Date 2015/02/19  
 Prepared By TIM VENTERS  
 Qualified By RYAN SEIB

Start Test Date 2015/02/19  
 Final Test Date 2015/02/19

Start Test Time 11:17:00  
 Final Test Time 18:19:00

### Test Recovery:

RECOVERED: 70' HMCW W/TR. O, TRACE OIL, 60% WATER, 40% MUD  
 60' WCM W/TR. O, TRACE OIL, 37% WATER, 63% MUD  
 130' TOTAL FLUID

TOOL SAMPLE: 2% OIL, 61% WATER, 37% MUD

CHLORIDES: 13,000 ppm  
 PH: 7.0  
 RW: .70 @ 66 deg.