

Fluid #	Stage Type	Fluid Name	Qty	Qty UoM	Mixing Density lbm/gal	Yield ft ³ /sack	Mix Fluid Gal	Rate bbl/mi n	Total Mix Fluid Gal
2	Lead Cement	ECONOCEM (TM) SYSTEM	140	sack	13.6	1.513		5	7.33
	2 %	BENTONITE, BULK (100003682)							
	0.40 %	HALAD(R)-9, 50 LB (100001617)							
	47 lbm	CMT - STANDARD - CLASS A REG OR TYPE I, BULK (100003684)							
	42 lbm	POZMIX A FLYASH (100003690)							
	2 %	BENTONITE, BULK (100003682)							

Fluid #	Stage Type	Fluid Name	Qty	Qty UoM	Mixing Density lbm/gal	Yield ft ³ /sack	Mix Fluid Gal	Rate bbl/mi n	Total Mix Fluid Gal
3	Tail Cement	HALCEM (TM) SYSTEM	90	sack	15.6	1.191		5	5.36
	0.40 %	HALAD(R)-9, 50 LB (100001617)							
	94 lbm	CMT - PREMIUM - CLASS H REG OR TYPE V, BULK (100003687)							
	5.36 Gal	FRESH WATER							

Fluid #	Stage Type	Fluid Name	Qty	Qty UoM	Mixing Density lbm/gal	Yield ft ³ /sack	Mix Fluid Gal	Rate bbl/mi n	Total Mix Fluid Gal
4	Displacement	Displacement	188	bbl	8.33				

Cement Left In Pipe	Amount	Reason
	42 ft	Shoe Joint

Comment

The Road to Excellence Starts with Safety

Sold To #: 372073	Ship To #: 3660220	Quote #: 0022034805	Sales Order #: 0902359436
Customer: TAPSTONE ENERGY LLC		Customer Rep: BILL	
Well Name: DIEL FARMS 3133-8	Well #: 1H	API/UWI #: 15-077-22139-01	
Field: HIBBORD	City (SAP): WALDRON	County/Parish: HARPER	State: KANSAS
Legal Description: S2 S2 SW SE-30-33S-8W-200FSL-1980FEL			
Contractor: NOMAC		Rig/Platform Name/Num: NOMAC 07	
Job BOM: 7522			
Well Type: HORIZONTAL OIL			
Sales Person: HALAMERICA\HX25353		Srcv Supervisor: Diego Torres	
Job			

Formation Name	
Formation Depth (MD)	Top Bottom
Form Type	BHST
Job depth MD	4994ft Job Depth TVD
Water Depth	Wk Ht Above Floor
Perforation Depth (MD)	From To

Well Data										
Description	New / Used	Size in	ID in	Weight lbm/ft	Thread	Grade	Top MD ft	Bottom MD ft	Top TVD ft	Bottom TVD ft
Casing	3	9.625	8.921	36	LTC	J-55	0	760		
Casing	3	7	6.276	26	LTC	P-110	0	4994	0	4495
Open Hole Section			8.75				760	4994	760	4495

Tools and Accessories									
Type	Size in	Qty	Make	Depth ft	Type	Size in	Qty	Make	
Guide Shoe	7			4994	Top Plug	7	1	HES	
Float Shoe	7				Bottom Plug	7	1	HES	
Float Collar	7				SSR plug set	7		HES	
Insert Float	7				Plug Container	7	1	HES	
Stage Tool	7				Centralizers	7		HES	

Miscellaneous Materials									
Gelling Agt	Conc	Surfactant	Conc	Acid Type	Qty	Conc			
Treatment Fld	Conc	Inhibitor	Conc	Sand Type	Size	Conc			

Fluid Data										
Stage/Plug #: 1										
Fluid #	Stage Type	Fluid Name	Qty	Qty UoM	Mixing Density lbm/gal	Yield ft ³ /sack	Mix Fluid Gal	Rate bbl/min	Total Mix Fluid Gal	
1	Mud Flush III (Liquid)	Mud Flush III	10	bbl	8.4					
41 gal/bbl		FRESH WATER								

1.0 Real-Time Job Summary

1.1 Job Event Log

Type	Seq. No.	Activity	Graph Label	Date	Time	Source	DH Density (ppg)	Comb Pump Rate (bbl/min)	DS Pump Press (psi)	Comments
Event	1	Call Out	Call Out	4/30/2015	13:00:00	USER				
Event	2	Depart Yard Safety Meeting	Depart Yard Safety Meeting	4/30/2015	14:50:00	USER				
Event	3	Depart from Service Center or Other Site	Depart from Service Center or Other Site	4/30/2015	15:00:00	USER				ALL HES HADNS PRESENT
Event	4	Arrive At Loc	Arrive At Loc	4/30/2015	18:00:00	USER				
Event	5	Pre-Rig Up Safety Meeting	Pre-Rig Up Safety Meeting	4/30/2015	18:10:00	USER				ALL HES HANDS PRESENT
Event	6	Rig-Up Equipment	Rig-Up Equipment	4/30/2015	18:20:00	USER				
Event	7	Rig-Up Completed	Rig-Up Completed	4/30/2015	19:00:00	USER				
Event	8	Standby Rig	Standby Rig	4/30/2015	19:05:00	USER				RIG CIRCULATE FOR 45 MIN
Event	9	Pre-Job Safety Meeting	Pre-Job Safety Meeting	4/30/2015	19:45:00	USER				
Event	10	Pressure Test	Pressure Test	4/30/2015	20:00:00	USER				
Event	11	Drop Bottom Plug	Drop Bottom Plug	4/30/2015	20:10:00	USER				BOTTOM PLUG LEFT HEAD
Event	12	Pump Spacer	Pump Spacer	4/30/2015	20:12:00	USER				10 BLS MUD FLUSH PUMP AT 4 BPM @ 200 PSI
Event	13	Pump Lead Cement	Pump Lead Cement	4/30/2015	20:18:00	USER				140 SACKS STANDARD CEMENT 37 BLS PUMP AT 13.6 PPG @ 4 BPM @ 400 PSI
Event	14	Pump Tail Cement	Pump Tail Cement	4/30/2015	20:26:00	USER				90 SACKS OF PREMIUM CEMENT PUMP AT 15.6 PPG @ 4 BPM @ 400 PSI
Event	15	Drop Top Plug	Drop Top Plug	4/30/2015	20:30:00	USER				TOP PLUG LEFT HEAD

HALLIBURTON

Customer: TAPS SCHOOLHOUSE INC

Job: 902359436

Case: Case 1

Event 16	Pump Displacement	Pump Displacement	4/30/2015	20:31:00	USER	170 BBL FRESH WATER AT 8 BPM @ 1000 PSI
Event 17	Slow Rate	Slow Rate	4/30/2015	20:53:00	USER	18 BBL AT 3 BPM @ 800 PSI
Event 18	Bump Plug	Bump Plug	4/30/2015	20:55:00	USER	TOP PLUG LANDED AT 900 TO 1600 PSI
Event 19	Check Floats	Check Floats	4/30/2015	20:57:00	USER	FLOATS HELD 1 BBL BACK OF FRESH WATER
Event 20	Post-Job Safety Meeting (Pre Rig-Down)	Post-Job Safety Meeting (Pre Rig-Down)	4/30/2015	21:10:00	USER	ALL HES HANDS PRESENT
Event 21	Rig-Down Equipment	Rig-Down Equipment	4/30/2015	21:20:00	USER	
Event 22	Rig-Down Completed	Rig-Down Completed	4/30/2015	22:00:00	USER	
Event 23	Depart Location Safety Meeting	Depart Location Safety Meeting	4/30/2015	22:10:00	USER	ALL HES HANDS PRESENT
Event 24	Depart Location	Depart Location	4/30/2015	22:15:00	USER	

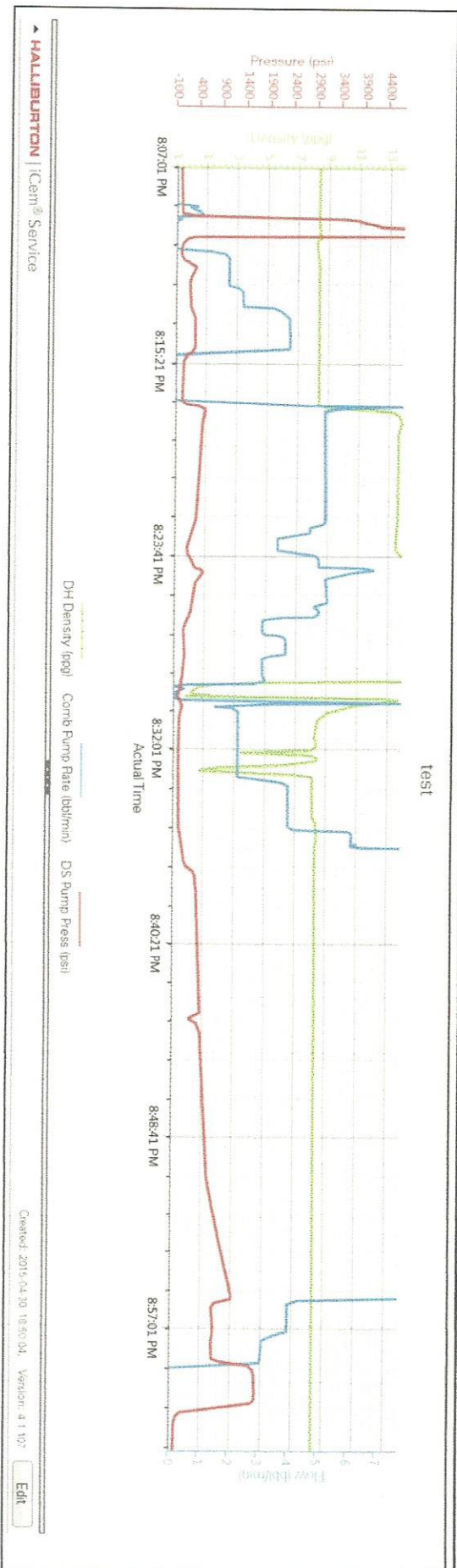
iCem[®] Service

(v. 4.1.107)

Created: Thursday, April 30, 2015

2.0 Attachments

2.1 Case 1-Custom Results.png



3.0 Custom Graphs

3.1 Custom Graph

